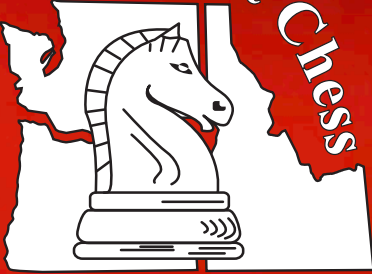


Northwest Chess



\$4.95

May 2025



VIRGINIA
STATE
CHESS
CHAMPIONSHIP

1990 OLAF OLIVESTAD
1997 ROBERT EDVBERG
1998 VIKTORIS PUPOLS
1993 ELMARE ZEMPELLE
1996 JAMES WICKERINK
1999 VIKTORIS PUPOLS

1994 NEIL SALMON
1998 GEORGI ORLOV
1999 SLAVA MIKHAILUK
2000 WILLIAM SCHILL

2001 WILLIAM SCHILL
2002 HARRY GREININGER
2003 NEIL SALMON
2004 SLAVA MIKHAILUK

1985 KEITH KELLEN
1986 DEBRAI SIKMAN
1987 JOHN HALL
1988 WYLLI EDWARDS
1989 RICHARD FERGUSON
1990 WYLLI EDWARDS

1989 VIKTORIS PUPOLS
1990 NEIL SALMON
1991 NEIL SALMON
1992 GEORGI ORLOV
1993 GEORGI ORLOV

1994 NEIL SALMON
1995 MIKE TSHIRIO
1996 GEORGI ORLOV
1997 ELENA DONALDSON
1998 GEORGI ORLOV

1997 GEORGI ORLOV
1998 SLAVA MIKHAILUK
1999 GEORGI ORLOV
2000 WILLIAM SCHILL

2001 WILLIAM SCHILL
2002 HARRY GREININGER
2003 NEIL SALMON
2004 SLAVA MIKHAILUK

Northwest Chess

May 2025, Volume 79-05 Issue 928

ISSN Publication 0146-6941

USPS publication 422390

Published monthly by the *Northwest Chess* Board.
To see the games from this issue online click:

[Issue Games Viewer](#)

To see photos from this issue click:

[Issue Photo Album](#)

POSTMASTER:

Send address changes to the Office of Record:

Northwest Chess c/o Orlov Chess Academy
4174 148th Ave NE, Building I, Suite M
Redmond, WA 98052-5164

Periodicals postage paid at Seattle, Washington
USPS periodicals postage permit number (0422-390)

NWC Staff

Editor: Jeffrey Roland, jeffreyyroland9@gmail.com
Games Editor: Ralph Dubisch, chesscoaching@gmail.com
Publisher: Duane Polich, publisher@gmail.com
Business Manager: businessmanager@nwchess.com

Board Representatives

Aniruddha Barua, Alex Machin, Duane Polich,
Ralph Dubisch, Jeffrey Roland, Josh Sinanan,
Wilson Gibbins, Eric Holcomb.

Entire contents ©2025 by *Northwest Chess*. All rights reserved.
Published opinions are those of the contributors and do not necessarily reflect the views of the editor or the *Northwest Chess* Board. *Northwest Chess* is the official publication of the chess governing bodies of the states of Washington, Oregon, and Idaho.

Advertising & Copy Deadline

Ads and submissions must be received by the fifth of the month for the items to appear in the next issue:

May 5 for the June issue;
June 5 for July.

Submit all ads, donations, payments, changes of address and subscriptions to:

Business Manager

Northwest Chess c/o Orlov Chess Academy
4174 148th Ave NE, Building I, Suite M
Redmond, WA 98052-5164

businessmanager@nwchess.com
<https://www.nwchess.com>



Judged Best Magazine/Newsletter for 2009 and 2014-2024 by Chess Journalists of America!

Front Cover

FM Ryan Porter, the 2025 Washington State Champion, shortly after winning the tournament.
Photo Credit: Meiling Cheng.

Back Cover

The Washington State Chess Championship trophy, which dates back to Olaf Ulvestad's victory in 1956, was on full display at the 2025 Washington State Championship.
Photo Credit: Meiling Cheng.

Submissions

Submissions of games (PGN format is preferable for games), stories, photos, art, and other **original** chess-related content are encouraged! Multiple submissions are acceptable; please indicate if material is non-exclusive. All submissions are subject to editing or revision. Send via U.S. Mail to:

Jeffrey Roland, NWC Editor
1514 S. Longmont Ave.
Boise, Idaho 83706-3732
or via e-mail to:
jeffreyyroland9@gmail.com

Subscriptions / Premium Memberships

Individual residents of WA/OR only.

Washington residents please add sales tax.

Idaho residents see

<https://www.idahochessassociation.com/>

		Rate
Adult	1 year	\$ 30.00
	3 years	\$ 80.00
Junior	1 year	\$ 24.00
	<i>Age U/21 at expiration</i>	2 years \$ 43.00
Scholastic	6 months	\$ 14.00
Senior	1 year	\$ 25.00
	<i>Age 65 or over</i>	3 years \$ 65.00
Additional Family Members	1 year	\$ 10.00
	<i>Residing at same address</i>	2 years \$ 18.00
		3 years \$ 25.00
Tournament/Trial	1 month	\$ 12.00

Online Subscriptions / Basic Memberships

Individual residents of Oregon only.

		Rate
Adult	1 year	\$ 17.50
	Junior (U/21 at expiration)	1 year \$ 10.00
Senior	1 year	\$ 17.50
Additional Family Members	1 year	\$ 5.00

Non-Member Subscriptions

		Rate
U.S. addresses	1 year	\$ 30.00
	3 years	\$ 80.00
Canada	1 year	\$ 40.00
Foreign	1 year	\$ 60.00

Table Of Contents

Ryan Porter Meiling Cheng.....	Front Cover	Washington Senior Championship (Ad) Redmond, Washington May 16-18.....	14
Chess Passing (a poem) David Zaklan	3	Washington Girls Championship (Ad) Seattle, Washington May 17-18.....	15
150 Issues (Editor’s Landmark) Jeffrey Roland.....	4	Washington Open (2-Page Ad) Redmond, Washington May 24-26.....	16
A Conversation With Coach Sloan Setiadikurnia Ken Lee.....	6	2025 Washington State Championship Josh Sinanan	18
Northwest Chess Hall Of Fame Inductee Daniel E. Wade Ralph Dubisch	8	Seattle Chess Club (Ad) Seattle, Washington.....	30
Seattle University Chess Club Chess Classic (Ad) Seattle, Washington May 3-4.....	11	Washington Father’s Day Open (Ad) Bellevue, Washington June 14-15.....	31
Washington State High School Individual Josh Sinanan	12	Washington State Championship Trophy Meiling Cheng.....	Back Cover

Chess Passing

By David Zaklan

Check, and check, and check’
This petty race from game to game;
To the last move of ever played.
All our games have illuminated,

A way to a dusty death.
To play or not to play:
That is the question:

Whether ‘tis nobler in the mind to suffer
The skewers and forks of outrageous fortune,
Or take up positions against a sea of troubles.

Life’s but a walking shadow, a poor player,
That struts and frets his hours across the board,
And then is heard of no more. It is a tale
Told by an idiot, full of sound and fury,
Signifying nothing

May all our games be remembered.



David Zaklan. Photo credit: Jeffrey Roland.



150 Issues

(Editor's Landmark)

Jeffrey Roland

Each image below, left to right, row by row, top to bottom, represents the front covers of all the issues in which I have been editor, from December 2012 through May 2025, in chronological order. Exactly 150 issues—a landmark achievement no matter how you look at it—and I'm still going!

Each image represents, to me, a full month of hard work, a snapshot of 'what is' right now (at the time), and the best I could do with what I had. As editor, I have learned much over time, so I think the issues get better and better.

I thought putting all these images together in one two-page spread would show a visual chronicle of my 12.5 years as editor (and it kind of does), but actually, it more shows the incredible community of fantastic individuals and chess players who make up *Northwest Chess*—the players, organizers, and various individuals and talents who share the mutual life and times we've all experienced together as part of *Northwest Chess*.

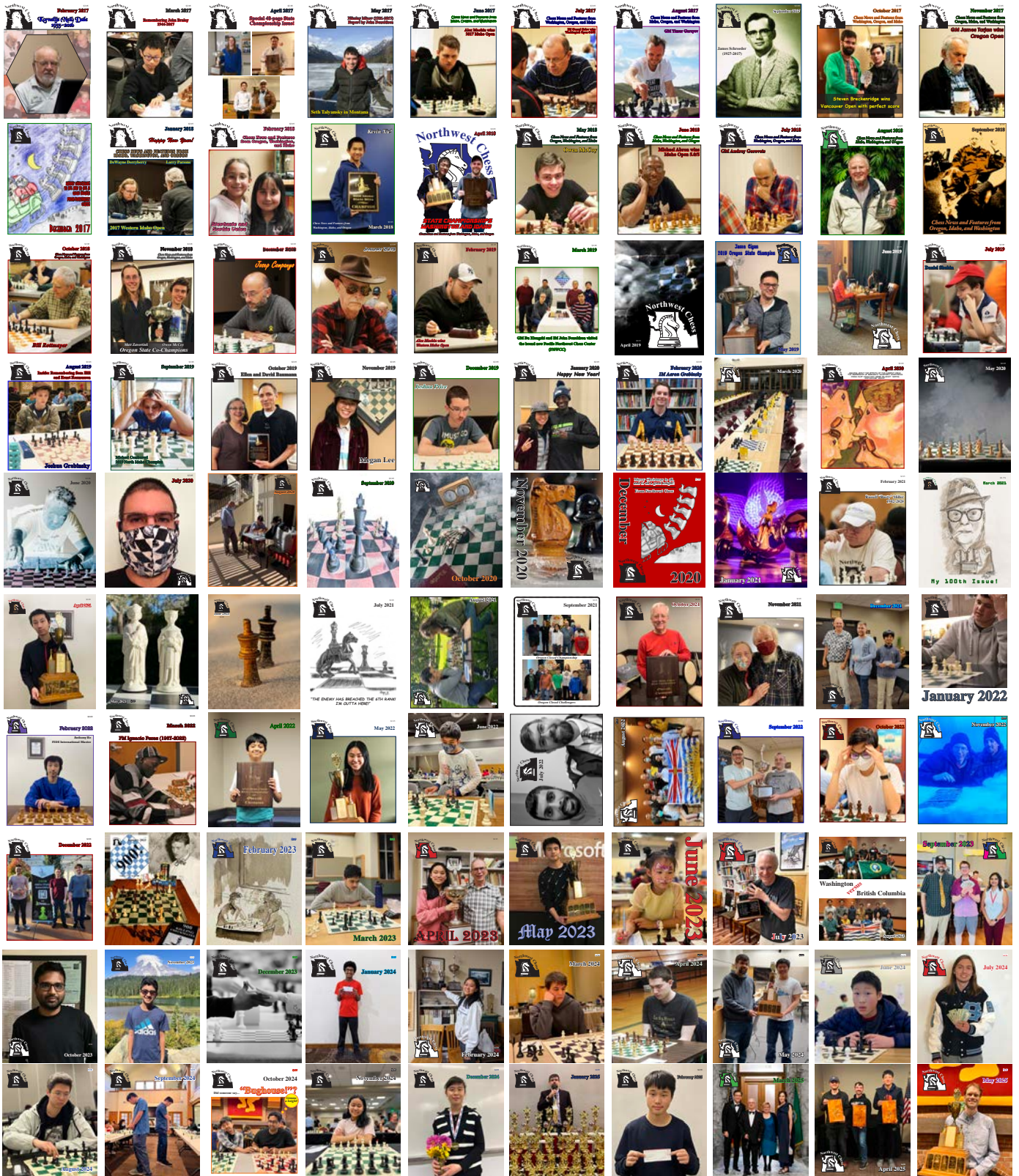
Of these 150 issues, 131 issues had 32 pages, one had 24 pages, three had 40 pages, and 15 had 48 pages. That is a total of 5,056 pages!

I encourage everyone to click on the images below which have links to the full issue as posted on the *NWC* website.

At first, the last few issues will say something like the file is not found. But this is only temporarily so. We make the full issues available to our online subscribers exclusively for a few months (giving benefit to our paid subscribers).

After a few months, we post the full issue to our website. (Initially, on the website *nwchess.com* we post only a teaser which shows only about half the pages) before offering the full issue about three to four months later.





A Conversation With Coach Sloan Setiadikurnia

Ken Lee

Coach Sloan Setiadikurnia (pronounced Se-Ti-a-di-kur-ni-a) has been part of the Pacific Northwest chess community for several years.

Starting out as a high school tournament player at Issaquah High and then becoming a coach starting in 2014, Sloan recently opened a new location for the Grand Knights Chess Academy in Bellevue. <https://grandknightschess.com/>

I recently sat down with Coach Sloan to discuss chess, what motivates kids to play chess at various ages, and his vision for the future of chess.

Ken: When did you first start playing chess?

Sloan: By today's standards, I started rather late. While I had played a bit when I was a kid, my first real exposure to chess was playing in the tenth grade in high school.

Ken: Who was your first coach?

Sloan: My first chess mentor was Mr. Jay Radmer from Issaquah High. He was my chemistry teacher and also ran the chess club.

Ken: I understand that you eventually became captain of your high school team?

Sloan: Yes, while I was in high school, I managed to improve my NWSRS from 700 to about 1250 by my senior year. But becoming the chess team

captain required a great deal of additional determination on my part.

Because our team was so small, it was difficult for our school to really get a consistent team of five people to show up to matches every week.

However, even though our team was relatively inexperienced, it was really important to me that our team do our best.

We attempted to get our team to advance to the state tournament, and while unfortunately it didn't happen, it was something that kept me motivated.

Ken: Was it different back in 2009, to recruit high school students to the chess community?

Sloan: Yes, the chess community was different back then.

To be completely honest, the reason why I didn't start chess earlier in middle school was that chess was seen as an extremely geeky and nerdy thing to do.

I do I feel like I was affected by peer pressure.

But in high school, I started to care less about what other people thought. While I did participate in football and lacrosse, I found myself drawn more toward chess, and I began to love it.

Ken: Do you think high school students find chess difficult to learn vs younger kids?

Sloan: I think the reason why many older kids don't start playing chess is that while learning the basics is easy, competition often intimidates older kids.

A younger kid can play, eat some pizza, and have a great time.

But as kids reach adolescence they become more preoccupied with status, and sometimes they take losses very hard.

Ken: What do you think is the best way to encourage people to study and develop a sense of grit?

Sloan: The biggest growth and joy in chess occurs when a student has a balance of performance, experience, skill set, and a calm yet competitive mental state.

When you have those elements, a student can perform with confidence and sustain the inevitable ups and downs of the game.

Ken: Could you please explain how that influences your approach as a coach?

Sloan: I like to focus on the things that my students can control. When reviewing games, I avoid being too critical. It doesn't help to focus on mistakes on things that they don't know or concepts that they haven't learned.

So obviously my feedback for a beginner student is going to be vastly different than the feedback provided to an experienced chess tournament player.

Ken: What are your thoughts about the timing of game reviews?

Sloan: It depends on the student. Sometimes those discussions are best handled immediately after each round.

But sometimes, I find that the student's emotional state is extremely raw after a tournament, and that they benefit from having a discussion after they've had time for an emotional reset.

Ken: Did you continue to play chess during your university years?

“The biggest growth and joy in chess occurs when a student has a balance of performance, experience, skill set, and a calm yet competitive mental state.”

Sloan: Yes, I majored in chemical engineering at University of Southern California (USC).

I have to say that some of my biggest growth in chess occurred during my time at USC.

I was fortunate enough to work with IM Jack Peters, and he taught me what it was to be a chess professional.

By that I mean, Jack really inspired me about the value of storytelling in chess and how to convey the love of the game to my students.

Ken: How did chess continue to influence your other studies or other personal interests?

Sloan: I believe the biggest thing chess taught me was how to set goals and then create an action plan to achieve it.

Chess is a difficult game that cannot be mastered quickly.

Ken: Do you think that makes chess unique?

Sloan: For a lot of kids, especially in this era, they're used to instant gratification from online games.

To be successful in chess requires a variety of different skills and a particular type of mind set that is forged over a period of time.

Ken: What advice would you have given yourself as a 15-year-old kid playing chess for the first time?

Sloan: The biggest thing I wish I did differently was that I would have paid less attention to my ELO. Focusing on my ELO turned out to be a poor use of my time and energy.

I'll even take it even a step further. Sometimes, I wish the ELO rating didn't even exist at all. An over emphasis on ELO and tournament wins can be counterproductive to the type of growth mindset that I want for myself and my students.

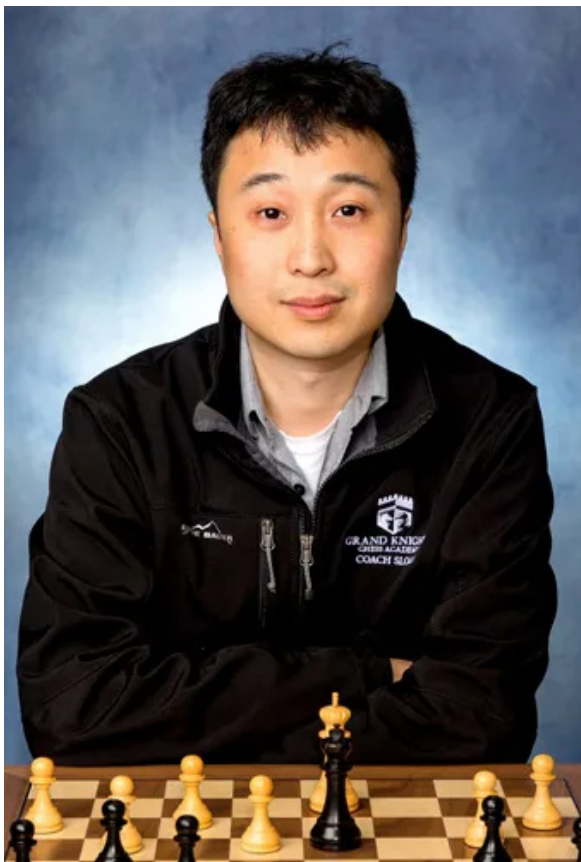
I started enjoying chess a lot more when I didn't care as much about those things. But I completely understand that for coaches, students, and even some parents, that the ELO is often the only way of defining performance and growth.

But chess is such a deep and complex game, that a person's progress cannot be measured by a single number alone.

Ken: What motivated you to play chess when you were a kid?

Sloan: When I first started playing chess, I did it so that I could win a trophy and maybe earn some money.

But later on, I realized why I really loved chess was for entirely different reasons. I enjoyed socializing with the people who love the game as much as I do.



*Sloan Setiadikurnia.
Courtesy of Sloan Setiadikurnia.*

Ken: When did you decide to become a chess coach?

Sloan: In 2014, I was doing full time lab work, but I kept my hand in chess, by doing part-time coaching at Chess4Life.

I coached at Chess4Life from 2014 to the end of 2020.

Trust me, I had no aspirations of becoming a full-time chess coach, but Chess4Life offered me a full-time position in 2015.

Ken: What motivated you to start Grand Knights Chess Academy?

Sloan: There were two things that made me want to open my own chess academy.

First, I wanted to run more tournaments that were US Chess rated to normalize the rating system here in the Pacific Northwest.

Because the competition is so intense, I wanted to modify the system to allow beginners access to US Chess rated tournaments.

Second, I wanted to reach a larger number of students.

I had a good number of private chess students at the time, but the Grand Knights Academy gives me an opportunity to serve an even larger community.

I think students learn best when they're not only motivated by their parents or their coach, but by their peers as well.

Ken: When did the Grand Knights Chess Academy officially open?

Sloan: Technically we started in 2023, but we were only working with a few schools.

Then in 2024, we opened our first location in Bellevue.

We grew out of that space quickly, so in January 2025 we moved to our new larger space.

Ken: What is your vision or hope for the future of chess at your academy and the Pacific Northwest?

Sloan: My hope is that more people will start playing chess.

While today, the Pacific Northwest has the biggest elementary state championship in the entire county, I still think we can get even more schools involved.

Ken: And what are some great ways to motivate kids, particularly high school kids, to start playing chess?

Sloan: I think the best solution is to have other chess playing kids act as role models.

The kids, who are already playing chess, need to encourage their friends to participate and to always remember to have fun!

NORTHWEST CHESS HALL OF FAME INDUCTEE

DANIEL E. WADE

RALPH DUBISCH

For a very long time, Dan Wade was the single most prolific editor of the publication that has become *Northwest Chess*, now surpassed only by our current editor, Jeffrey Roland. In several stints ranging from a few months to over three years between August 1952 and April 1965, Wade produced a total of 108 monthly issues. Near the end of his tenure, the *Washington Chess Letter* was renamed *Northwest Chess Letter*; the mimeographed newsletter at least hinting at the magazine it would become.

Wade began playing competitive chess at Franklin High School in Seattle as a sophomore in 1934. His first “real” event was the Seattle Championship in 1936, where he scored a respectable 4.5/9, including a victory against the strong master Olaf Ulvestad (1912-2000), about which Wade said, “In short, this game represents a top expert versus a fish.”

**Olaf Ulvestad –
Daniel Wade [C26]**
Seattle City Championship
Seattle, 1936
[Ralph Dubisch]

1.e4 e5 2.Nc3 Nf6 3.g3 d5 4.exd5 Nxd5 5.Qe2?!

More “book” lines go 5.Bg2 Nxc3 6.bxc3; or 5.Nge2, not yet committing the queen.

5...Nc6 6.Bg2?!

6.a3

6...Nde7

Page 8

Wade was not looking for opportunities this early in a fairly standard, roughly equal, opening position. However, here he could have more or less forced the exchange of the fianchetto bishop for a knight with 6...Ndb4! 7.Bxc6+ (7.d3? Nd4! 8.Qxe5+ Be6 and Black breaks in on c2.) 7...Nxc6 with a very comfortable positional edge for Black.

7.Nf3 Bg4 8.Qb5

“Ulvestad always seemed to be moving his queen to b5 against me,” Wade commented, comparing this game to another in 1960, 24 years later.

8...Bxf3 9.Bxf3 Qc8 10.d3 a6



Position after 10...a6

11.Qc5?!

11.Qa4 b5 12.Qe4 f5 13.Qe3

11...f6?!

11...Nd4! 12.Bd1 Nec6 13.Qd5 Qh3 solves all of Black’s problems, while setting some for White.

12.Be3 Qd7 13.Qc4 0-0-0 14.Ne4 Kb8?

14...Nf5!?∞

15.Nc5 Qd6 16.Qb3

16.b4±

16...Na5



Position after 16...Na5

17.Qb4?!

17.Qa3 Nd5 18.b4±

17...Nd5 18.Qxa5 Nxe3 19.Nxa6+ Qxa6 20.Qxa6 Nxc2+ 21.Kd2 bxa6 22.Kxc2 Bc5 23.Rhf1 Bd4

Black is certainly not worse after the flurry of desperado tactics.

24.Rab1 Rd6 25.b4 Rb6 26.a4 Ka7 27.b5 Rhb8 28.Bc6 a5 29.f4 h6 30.fxe5 Bxe5 31.Rfe1 Rd8 32.Re4 h5

32...Rbb8

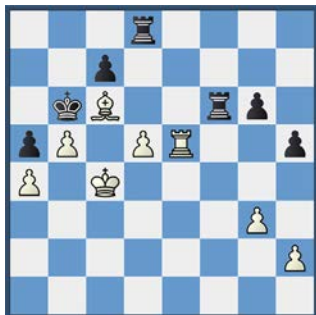
33.Rbe1 Rbb8 34.Rxe5?

Perhaps a sign of frustration, playing against a lower-ranked opponent? Or did White actually believe this offered winning chances?

34...fxe5 35.Rxe5 g6?!

35...Rd4!? 36.Rxh5 Rbd8 (Not 36...Rxa4?? 37.b6+!) 37.Be4 Rxa4 and Black is playing for two results.

36.Kc3 Rd6 37.d4 Rbd8 38.d5 Kb6 39. Kc4 Rf6



Position after 39...Rf6

40.Be8?!

40.Re6 Rf2 41.h4 Rc2+ 42.Kd4 Ra2 43.Bd7+ Kb7 44.Bc6+ when it is risky to try to make progress with Black. White, we have seen, however, isn't too interested in making peace.

40...Rfd6

40...h4

41.Bf7

41.h4

41...R8d7

41...Rf6 42.Be8 h4

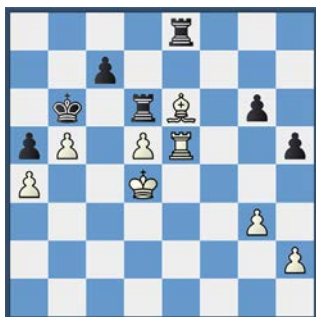
42.Be6

42.Be8

42...Re7

42...Rd8

43.Kd4 Re8



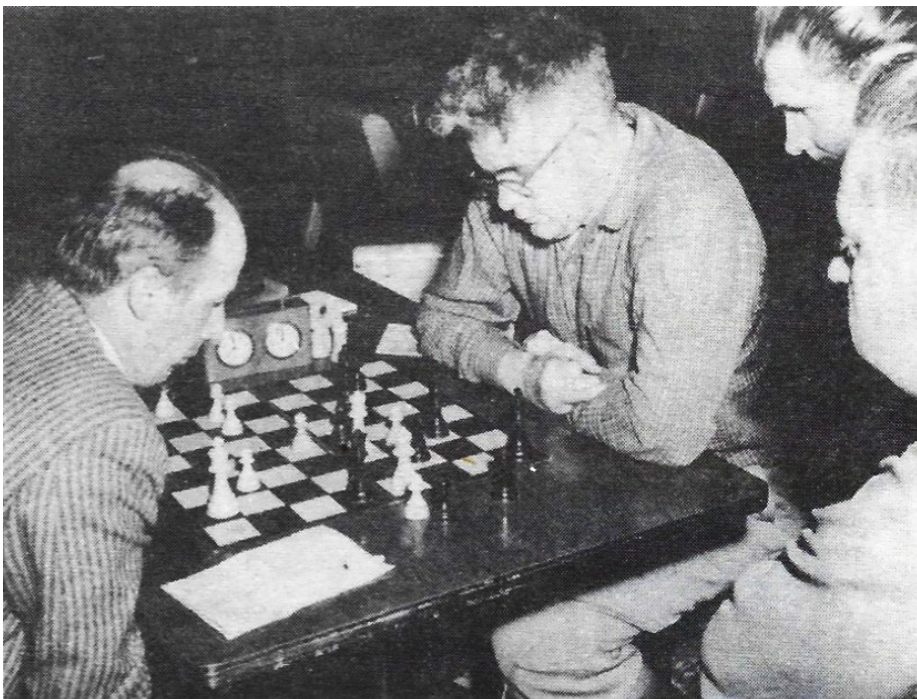
Position after 43...Re8

44.Ke4?

44.Re4

44...Rf8 45.g4

45.Rg5 Rf1 46.Rxg6 Ra1 47.Rg5 Rxa4+



Dan Wade (R) versus Olaf Ulvestad, late 1950s. In the right foreground is the late Fred Howard, and two-time state champion, Viesturs Seglins. Original photo from the Northwest Chess February 1983 article.

48.Kd3 Kxb5 49.Rxh5 Ra1

45...hxg4 46.Bxg4 Rdf6

46...Rf1

47.Rg5 Kc5 48.d6+

48.Ke5 Rf1

48...Kxd6 49.Rd5+ Ke7 50.Rd7+ Ke8

51.Ke5 R6f7 52.Rd4 Re7+ 53.Kd5 Rf6

54.Kc4 g5 55.h3

55.Bh5+ Kf8 56.Rd8+ Kg7+

55...Rf4 56.Kd3 Rxd4+ 57.Kxd4 Kd8

58.Kd5 Re8 59.Be6 Rf8 60.Ke5 Rf3

61.Bf5 Ra3 62.Bc2 Rxh3 63.Kf5 Rg3

64.Bd1 Ke7 65.Bg4 Kd6 66.Kxg5

Rxg4+



Position after 66...Rxg4+

and shortly

0-1

In 1940 he won a qualifying tournament for the Washington Championship, but did not play in the event, instead joining the army.

Serving in Hawaii, Wade came under fire during the Pearl Harbor attack, December 7, 1941. With his barracks strafed by Japanese Zeros, Wade saw his only action of the war. "I was our unit's bugler, but could hardly blow the thing," he admitted to Larry Parr in an extensive interview published in *Northwest Chess*, [February 1983](#).

On leaving the army in July, 1945, Wade got a job delivering Wonder Bread. In 1948 he married Marie Jellum.

After losing a match to James McCormick (Wade takes responsibility for first applying the appellation "Dirty Jim"), McCormick told him, "Wadie, your blood is getting mighty stale." Of course, the next time they played, Wade beat him, though Jim never stopped calling him Wadie. This is his favorite McCormick win, from 1962.

Daniel Wade –
James McCormick [B44]
Seattle Seafair Open
Seattle, 1962
[Ralph Dubisch]

For Larry Parr's 1983 annotations to this game, the reader is invited to [view the February 1983 issue](#) of *Northwest Chess*.

1.e4 c5 2.Nf3 e6 3.c3 Nc6 4.d4 cxd4 5.Nxd4

Of course 2.c3 or 3.c3 in the Sicilian is usually played to recapture with the pawn on d4, building the classic central pawn duo. 5.cxd4 d5 6.e5 could transpose into an Advance French.

5...a6 6.Be3 Nf6 7.Nd2 e5 8.Nxc6 bxc6 9.Nc4 Qc7



Position after 9...Qc7

10.f3?!

10.f4!? d5 (10...exf4 11.Bb6 Qb8 12.e5 Nd5 13.Bd4 gives White fine compensation.) 11.exd5 Nxd5

a) 11...cxd5 12.Nb6 (or just 12.Nxe5±) 12...Rb8 13.fxe5 Qxe5 (13...Ng4 14.Qa4+ Bd7 (14...Kd8 15.Nxd5 Qxe5 16.0-0-0+-) 15.Nxd7 Qxd7 16.Qxd7+ Kxd7 17.Bd4 Rxb2 18.Bxa6±) 14.Qd4 and White is doing well;

b) 11...exf4 12.d6!±;

12.Qf3 exf4 13.Bd4 looks like dynamic compensation for the pawn.

10...Rb8 11.Qc2 Be7 12.Rc1 0-0 13.Be2 d5 14.Nd2 Qb7 15.Rb1 Be6 16.b3 c5



Position after 16...c5

17.exd5?!

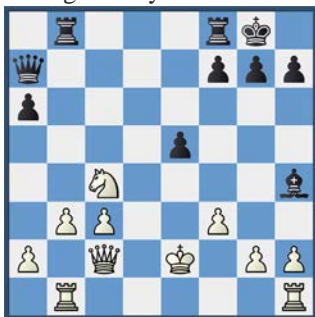
17.0-0 d4 18.Bf2

17...Nxd5 18.Nc4 Nxe3 19.Nxe3 c4 20.Bxc4 Bh4+ 21.Ke2 Bxc4+ 22.Nxc4

22.bxc4 Qc7 23.Rxb8 Rxb8 24.Rb1 dissipates the danger.

22...Qa7

22...e4! 23.g3 exf3+ 24.Kf2 Be7 and White's king is not yet secure.



Position after 22...Qa7

23.Kd1

The king goes for a walk, but safer is 23.g3 Bg5 24.Kf1, aiming to hide away on the kingside.

23...Bg5

23...a5∞

24.Qe2 a5 25.Kc2

With 25.a4, even the queenside is starting to look like a haven for the white king.

25...a4 26.Rhf1

26.Rhe1

26...axb3+

26...Rfc8

27.axb3 Qa2+ 28.Rb2 Qa6 29.Rd1 Rfe8

30.Qe4 Qh6?! 31.h4 Bf4

31...Qxh4? 32.Qxh4 Bxh4 33.b4±

32.Rh1

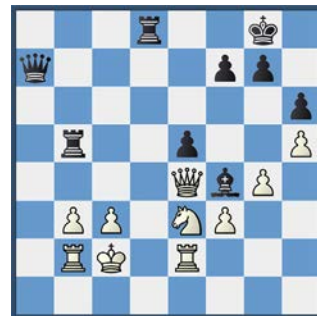
32.b4 Qxh4 33.Kb3±

32...Red8 33.g4

33.Ra2

33...Qa6 34.h5 h6 35.Re1 Qa7 36.Re2 Rb5 37.Ne3?

37.Re1 waits.



Position after 37.Ne3

37...Qa1?

Black appears satisfied to repeat the position, but 37...Ra5 is close to winning for Black, who now threatens to penetrate with the rook along the a-file. 38.Rd2 (38. Re1 Ral 39.Rxa1 Qxa1 40.Rb1 Qa2+ 41.Rb2 Qa7 42.Nc4 Qg1-+; 38.c4 Ral 39.Nd5 Rc1+ 40.Kd3 Qa5-+; 38.b4 Ra2!)

Chess4Life
CHESS CLASSES
include individual progress tracking!
START TODAY
WITH A FREE ASSESSMENT
LESSON ON CHESS4LIFE.COM
CLASSES OFFERED
Online & In-Person

Orlov Chess Academy
IM Georgi Orlov
2540 US Chess

Offers time-tested program,
challenge and quick progress!

Chess Camps, Tournaments
Chess Classes, Private Lessons

info@chessplayer.com
www.chessplayer.com
(206)-387-1253

ORLOV
CHESS
ACADEMY

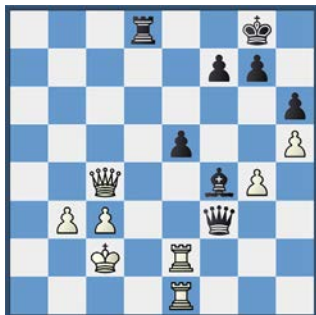
38...Rxd2+ 39.Kxd2 Ra1 and Black is winning a piece with the plan of capturing with the bishop on e3, then checking with the rook on d1/e1 to win the queen. For example: 40.Ke2 Bxe3 41.Qxe3 Re1+.

38.Rb1?

White repeats once, but this gives McCormick another opportunity. 38.Qa4! Qxa4 39.bxa4±

38...Qa2+ 39.Rb2 Qa1?

Black lives to fight on by retreating farther. 39...Qa7 is fine. **40.Qa4! Qh1 41.Qxb5 Bxe3 42.Rb1 Qxf3 43.Rbe1 Bf4 44.Qc4!**



Position after 44.Qc4

A nice tactic to maintain material advantage.

44...Qxg4 45.Rxe5 Rd2+ 46.Kb1 Qg2?

46...g5 47.hxg6 Qxg6+ 48.R5e4 certainly favors White, but not by quite the same margin as the game choice.

47.Re8+

47.Qc8+ Kh7 48.Qf5+ wins instantly.

47...Kh7 48.Qe4+

Black's chances evaporate with the exchange of queens, and the game ends in a few moves. White could have revived the tactic from the last note with a rook sacrifice: 48.Rh8+ Kxh8 49.Qc8+ Rd8 (49...Kh7 50.Qf5+-) 50.Qxd8+ Kh7 51.Qd3+ g6 52.Qd7 and wins.

1-0

Daniel Wade gets credit for making the *Washington Chess Letter* a more lively affair. He brought an interest in people, rather than theory, and liked to publish upsets. He told Parr, "I was never an opening theoretician, but I loved to play through biographical games collections searching for a key to a player's personality."

Here's a link to Dan Wade's first issue of *Washington Chess Letter*, August 1952: https://www.nwchess.com/articles/history/WCL/WCL_1952_08.pdf

Explaining his style as editor, he said, "I collect old sports journalism [...] As an editor, I tried to apply lessons learned from my sports reading." And one regret, "My weak link as an editor was that when people worked for nothing, you could never read them the riot act even when they fully deserved it." This, I suspect, has been true for every editor of the publication.

The 1983 story by Larry Parr is well worth reading, though some of the language might be seen as a bit racist, or at least politically incorrect. There are several wins against Viktor's Pupols, who is quoted as saying Dan is a "remarkably solid player who could, nonetheless, mix it up."

Let's end with a lament common to many of us. "I keep planning to return to chess, but my other interests somehow take up all my time." Daniel Edward Wade, 1918-1998.



SEATTLE UNIVERSITY CHESS CLUB

CHESS CLASSIC

SAT-SUN, MAY 3-4, 2025

SEATTLE UNIVERSITY- 901 12TH AVENUE, SEATTLE, WA 98122

Format: An Open Swiss chess tournament in five sections:

- **Championship:** A 4-round, G/90; +30 dual USCF + FIDE rated Swiss open to players rated 2000+ USCF. Rounds: Saturday @ 10am, 5pm. Sunday @ 9am, 4pm. Entry Fee: \$80. \$70 play-up fee if rated 1800-1999 USCF. Free entry for GMs, IMs, WGMs, and WIMs.
- **Premier U2000:** A 5-round, G/60; d10 USCF rated Swiss open to players rated 1300-1999 USCF. Rounds: Saturday @ 9am, 12pm, 6pm. Sunday @ 9am, 12pm. Entry Fee: \$70. \$35 play-up fee if rated 1300-1499 USCF.
- **Rising U1500:** A 5-round, G/60; d10 USCF rated Swiss open to players rated below 1500 USCF. Rounds: Saturday @ 9am, 12pm, 6pm. Sunday @ 9am, 12pm. Entry Fee: \$60.
- **Casual (18+):** A 5-round, G/30; d10 unrated Swiss open to players from unrated to 1000 USCF. Rounds: Saturday @ 9am, 10:45am, 12:30pm, 2pm, 6pm. Entry Fee: \$30.
- **Scholastic (K-12):** A 5-round, G25; d5 NWSRS rated Swiss in four sections: K-3 U700, K-3 Open, 4-12 U900, 4-12 Open. Rounds: Saturday @ 9am, 10:15am, 11:30am, 1pm, 2:15pm. Entry Fee: \$30.

Online Registration: [nwchess.com/OnlineRegistration](https://www.nwchess.com/OnlineRegistration)

Special Guest – **GM Kayden Troff!**

**Jinmo Nam (1664) –
Advaith Vijayakumar (2211) [A30]**
High School State Individual Ch
Seattle, WA (R1), January 17, 2025
[Ralph Dubisch]

1.Nf3 Nf6 2.g3 e6 3.Bg2 d5 4.c4 Be7
5.d3 c5 6.0-0 Nc6 7.Nc3 d4 8.Na4 e5
9.e3 Bg4 10.h3 Bxf3?!

10...Be6

11.Bxf3 Qd7 12.Kh2 0-0 13.a3 e4!?

Ambitious? Impatient? 13...b6 makes
a sound position for Black, with some
space and White's knight off-side.

14.dxe4 Ne5

14...Rad8

15.b3?!

15.Bg2 Nxc4 16.b3±

15...b5 16.cxb5?!

16.Nb2 Nxf3+ 17.Qxf3 Qe6 18.exd4
cxd4 19.Re1±

16...Rad8?!

16...Nxf3+ 17.Qxf3 Qxb5 forks f1 and
b3. 18.Bb2 Qxb3 19.Qd1 Qxd1 20.Rfxd1
dxe3±

17.Bg2 Qxb5 18.Qc2 d3 19.Qc3?!

19.Qd1 c4 20.b4±

19...Nfg4+ 20.Kg1 Bf6 21.Qxc5 Qxb3
22.hxg4 Qxa4 23.Ra2?!

23.Bd2±



Position after 23.Ra2

23...Nxc4±

23...Rb8± to bring the other rook to c8
may be even stronger.

24.f4??

24.Qh5 Ne5 25.Bd2 promises a difficult
defense, but perhaps not an impossible
one.

24...Rc8

24...Qb3! is an immediate refutation of
White's move 24: 25.Rd2 Nxe3! 26.e5
Nxf1 27.Bxf1 Rc8+

25.Qb4 Qa6 26.Bh3 Bc3 27.Qb3 Qg6
28.Qd1

28.Rg2 h5±

28...Nxe3! 29.Bxe3

29.Qxd3 Nxf1 30.Bxc8 Nxg3 31.Rg2
Rxc8 32.Rxg3 Qh5

29...Qxg3+ 30.Rg2 Qxe3+ 31.Kh2 Rc6
32.Rf3 Qxe4 33.Qxd3 Qxd3 34.Rxd3
Ba5 35.Rd7 Bc7 36.Kg1

36.Rf2 g5

36...Bxf4 37.Rxa7?

A helpful final blunder. To lose slower,
choose 37.Rb2 Be3+ 38.Kg2

37...Be3+

and Black went on to win.

0-1



Washington Senior Championship



MAY 16-18, 2025

ORLOV CHESS ACADEMY - REDMOND

4174 148TH AVE NE, BLDG. I, SUITE M, REDMOND, WA 98052

Info/Entries: Josh Sinanan, WCF
President, 206-769-3757,
WashingtonChessFederation@gmail.com

Registration: Online at
nwchess.com/OnlineRegistration.
For credit, debit, and PayPal
payments, a processing fee of 4%
will be added on, so consider saving
by using Zelle or SettleKing instead.
Registration **deadline Thu. 5/15 @
5pm.**

Memberships: Current US Chess
and WCF membership required,
other states accepted. Membership
must be paid at time of registration.

Format: A 5-Round, G/90; +30 Swiss in
two sections: Championship & Premier
U1700. Sections with < 6 players may be
combined.

Eligibility: Open to Seniors age 50+ (or
reaching age 50 by August 1, 2025).

Rating: US Chess Rated. May 2025 US
Chess Regular supplement will be used to
determine pairings and prizes.

Entry Fee: \$50 by 5/9, \$60 after. Players
rated >1500 may play-up if desired. Free
entry for GMs, IMs, WGMs, or 2400+ USCF.

Rounds: Fri: 6:30pm. Sat/Sun: 10am, 3pm.

Byes: Two half-point byes available. If
interested, request before end of round 2.

Prize Fund: \$750 (based on 20 pd. entries)

Championship: 1st/2nd: \$150-\$100.

1st U2000/U1800: \$80

Premier U1700: 1st/2nd: \$100-\$70.

1st U1600/1400/U1200: \$60

*Highest finishing Washington resident in
Championship receives the title of
Washington State Senior Champion, a seed
into the Invitational Section of the 2026
Washington State Championship, and a \$750
travel stipend from the WCF to attend the
2025 Irwin National Tournament of Senior
State Champions, held concurrently with the
U.S. Open in early August. If needed to break
a tie for 1st place, two G/90 playoff games
will be played later in the year.*

Washington Girls Championship



MAY 17-18, 2025

ORLOV CHESS ACADEMY - GREENLAKE
7212 WOODLAWN AVE NE, SEATTLE, WA 98115

Highest finishing Washington resident in the Championship section receives the title of Washington State Girls Champion and a \$750 travel stipend from the WCF to attend the 2025 [Haring National Girls Tournament of Champions](#), held concurrently with the US Open in early August.

Format: A 5-round Swiss in three sections:

- **Elena Donaldson Championship:** A 2-day (Saturday-Sunday), 5-round G/90; +10 Swiss tournament. Open to all girls desiring to play for the title of WA State Girls Champion. Dual US Chess and NWSRS rated; US Chess membership required. Rounds: Sat. 9am, 1:30pm, 6pm. Sun. 10am, 2:30pm. Awards ~ 6:30pm. A tie for first place in the Championship section will be resolved later in the year by two G/90 playoff games.
- **Katerina Rohonyan U1400:** A 1-day (Saturday only), 4-round, G/40; +10 Swiss tournament. Dual US Chess and NWSRS rated; US Chess membership required. Rounds: Sat. 9am, 11am, Lunch, 1:30pm, 3:30pm. Awards ~ 5:30pm.
- **Naomi Bashkansky U800:** A 1-day (Sunday only), 5-round, G/25; +5 Swiss tournament. NWSRS rated; US Chess unrated, no US Chess membership required. Rounds: Sun. 9am, 10:15am, 11:30am, Lunch, 1:30pm, 2:45pm. Awards ~ 4pm.

Eligibility: Open to all girls in grades K-12 as of the 2024-25 school year. Out-of-state players welcome! Players must be under the age of 19 as of Sept 1, 2025.

Rating: Higher of current NWSRS or US Chess May supplement rating will be used to determine section, pairings, and prizes.

Byes: Two half-point byes available. If interested, request before the end of round 2.

Entry Fees: Donaldson Championship: \$50 by May 10, \$60 after. Rohonyan U1400/Bashkansky U800: \$25 by May 10, \$30 after. Free entry for WGMs, WIMs, WFM, or US Chess 2000+. Maximum of 32 players total & maximum of 20 players in a section - please register early to secure your spot.

Registration: Online registration available at nwchess.com/OnlineRegistration Pay by Credit/Debit/PayPal/SettleKing. For credit, debit, and PayPal payments, a processing fee of 4% will be added on, so consider saving by using Zelle or SettleKing instead. **Registration + payment deadline is Friday, May 16 by 5pm.** No registrations or payments will be accepted after the deadline. Unpaid players will be removed from the roster, and spots will be offered to players on the waitlist.

Prizes: Amazon Gift Cards prizes awarded in each section (based on 30 paid entries).

Elena Donaldson Championship: 1st - 3rd: \$120, \$90, \$60, 4th - Chess book.

Katerina Rohonyan U1400: 1st - 3rd: \$60, \$45, \$30, 4th - Chess book.

Naomi Bashkansky U800: 1st - 3rd: \$60, \$45, \$30, 4th - Chess book.

Special Prizes (per section): Best Upset - Medal, Best Dressed - \$10, Kindness + Spreading Joy - \$10.

Questions? Contact Josh Sinanan, WCF President, washingtonchessfederation@gmail.com



WASHINGTON OPEN

Sat-Mon, May 24-26, 2025

Redmond Marriott

7401 164th Ave NE, Redmond, WA 98052

\$13,000 Prize Fund
(based on 200 paid entries)

Main Event:

Format: A 6-round Swiss across 4 sections: Elite (1800+), Premier (U1800), Rising (U1500), and Dynamos (U1200).

Time Controls:

- 3-day: 30/90, SD/30; +30. Late default: 60 minutes.
- 2-day: G/55; +15 (rds. 1-3), rds. 4-6 same as for 3-day.

Schedule:

- 3-day option: Sat @ 10 AM, 6 PM; Sun @ 10 AM, 6 PM; Mon @ 10 AM, 4 PM.
- 2-day option: Sun @ 9 AM, 11:45 AM, 2:45 PM, then join 3-day schedule @ 6 PM (from round 4 onward).
- WCF Annual Meeting & Elections: Mon @ 3 PM.

Note: We encourage you to play in the Main Event *and* take part in some side events too (see next page). The schedule permits doing this with minimum or no half-point byes!

Entry Fee: \$130 by Sun, 04/27; \$140 by Sun, 05/11; and \$150 after 05/11 or on-site. Less \$50 for Seniors (age 50+). Playing up one section is allowed (for \$80 extra) if the player's USCF rating is within 100 points of the section's lower limit (i.e., min 1700 for Elite, min 1400 for Premier, min 1100 for Rising). Free entry for GMs, IMs, WGMs, WIMs, and USCF 2400+. Re-entry for ½ of original entry fee. Canadians may pay CAD\$ at par.

Rating: Dual rated (USCF & NWSRS), plus Elite and Premier sections are FIDE rated (except G/55 games). Higher of May 2025 USCF and current NWSRS ratings used to determine section and prizes. Foreign ratings used for players w/o USCF rating. Elite and Premier sections are paired by USCF rating; Rising and Dynamos sections are paired by NWSRS rating.

Registration, Information & Payment:

- **Before event:** Online (by Thu, 05/22 @ 5 PM) at NWchess.com/OnlineRegistration/ (pay by credit / debit / PayPal / SettleKing) or make checks payable to Washington Chess Federation. Mail to: Josh Sinanan, 4174 148th Ave NE, Building I, Suite M, Redmond, WA 98052.

Info: WashingtonChessFederation@gmail.com, 206-769-3757

- **On-site:** Sat, 05/24 @ 8-9 AM for 3-day schedule, or 4:30-5 PM if entering with 1 half-point bye. Sun, 05/25 @ 8-8:30 AM for 2-day schedule, or 9-9:30 AM if entering 3-day schedule with 2 half-point byes. Late registrations may receive a half-point bye for round 1. 2 half-point byes available; request before the end of round 2.

Hotel Info:

Redmond Marriott, \$129-\$139/night + tax. One King / Queen / Double or two Queens, single or double occupancy. Call (425) 498-4000 to request the WA Chess Federation block, or use the [online reservation](#). Group codes: WCFWCFR or WCFWCFQ. Cut-off date for discounts: Fri, Apr 25, 2025.

Prizes:

- **Elite (1800+):** \$1000, \$800, \$600, \$500, \$400, \$300; U2100: \$225, \$175; U1900: \$225, \$175
- **Premier (U1800):** \$500, \$400, \$350, \$300, \$250; U1600: \$200, \$175
- **Rising (U1500):** \$400, \$350, \$300, \$250, \$200; U1300: \$175, \$150
- **Dynamos (U1200):** \$300, \$250, \$200, \$175, \$150; U1000: \$175, \$150; Unrated: \$175, \$150

Championship Seeds: Highest finishing Washington resident in the Elite and Premier section is seeded into the 2026 Washington State Championship, in the Championship and Challengers section, respectively. Ties for a seed will be resolved by post-event playoff games.

Mixed Doubles Prizes: Best male-female 2-player team's combined score: 1st \$200, 2nd \$150, 3rd \$100. Average team rating must be under 2000; may play in different sections. Register (no extra fee) before round 3. Players may win a Mixed Doubles prize in addition to other prizes.

Special Prizes (per section):

- **Best Female Player*:** \$50. Requires min 3 eligible players.
- **Best Senior Player* (age 50+):** \$50. Requires min 3 eligible players.
- **Highest (USCF) Rating Gain*:** 1st \$50, 2nd \$25. Requires an established (non-provisional) rating. May not be combined with Biggest Upset Win.
- **Biggest Upset Win (per round):** \$25. Max 2 per player.
- **Fair-Play, Kindness, Spreading Joy:** \$25. Please nominate.
- **Best Dressed (per day):** \$25. May not win repeatedly.
- **Best Annotated Game:** 1st \$75, 2nd \$50, 3rd \$25. Submit one annotated game that you consider to be interesting or well-played. A panel of judges will select winners.

Note: * = May not be combined with equal or higher prizes.

Miscellaneous / Procedures:

Current US Chess and WCF / OCF / ICA memberships required; other states accepted. Memberships may be paid at the time of registration. Wheelchair accessible. Please bring a digital clock, if available. Pairings and standings will be posted before each round in the hallway near the play area.

WASHINGTON OPEN, May 24-26 (cont.)

Fun Side Events!

(many run between rounds of the Main Event)

Washington Open Faustino Oro Scholastic

Sat, 05/24 @ 9 AM – 4 PM (during round 1)

Format: Classical and Rapid sections:

- **Classical sections:** A 4-round G/40; +5 Swiss in two sections: **K-3 Open** and **4-12 U900**. For intermediate to advanced players. Dual NWSRS and USCF rated. US Chess membership req'd. Clocks and notation req'd. Rounds: 9:15 AM, 10:45 AM, lunch, 12:45 PM, 2:15 PM. Awards: ~4 PM.

- **Rapid sections:** A 5-round G/25; +5 Swiss in two sections: **K-3 U800** and **4-12 U900**. For novice to low intermediate players. Dual NWSRS and USCF rated. US Chess membership req'd. Clocks req'd. Notation req'd in 4-12 U900, but optional in K-3 U800. Rounds: 9:15 AM, 10:30 AM, lunch, 12 PM, 1:15 PM, 2:30 PM. Awards: ~4 PM.

Eligibility: Open to students in grades K-12. Out-of-state players welcome!

Entry fee: \$45 if registered by Sat, 05/17; \$55 after. Room for 132 players.

Awards (per section):

- Overall prizes (in Amazon e-gift cards): 1st–5th: \$65 / \$60 / \$55 / \$50 / \$45.
- Special prizes: Medals for first-timers and for biggest upset win.

- Top performer (by TPR) in K-3 Open and 4-12 Open wins free entry into the 2-day option of 2025 Washington Open (Main Event) (see prev. page).

Rating: Higher of May 2025 USCF or current NWSRS ratings used for section & pairings.

Registration: 100% pre-registered (NWChess.com/OnlineRegistration/ - pay by credit / debit / PayPal / SettleKing); no on-site entries or payments.

Registration & payment **by Wed, 05/21 @ 5 PM**. Unpaid players withdrawn.

Washington Open Gary Dorfner Memorial Adult Novice Swiss

Sat, 05/24 @ 11 AM – 4 PM (during round 1)

A 4-Round Swiss in one section. 1 half-point bye available. For U1200 or unrated adults (18+). No memberships req'd. Unrated. TC: G/30; +5. EF: \$25. Registration: 10:30-10:50 AM. Rounds: 11 AM, 12:15, 1:30, and 2:45 PM. Prize fund: \$400/b20. 1st–3rd: \$150 / \$100 / \$60, 1st U1000 / U700 / Unr. \$30.

Washington Open Fischer Chess960 Rapid

Sat, 05/24 @ 2:15 PM – 4:30 PM (between rounds 1 & 2)

Format: A 4-Round Swiss in one section, 1 half-point bye available. Unrated. TC: G/10; +3. EF: \$20. Registration: 1:30-2 PM. Rounds: 2:15 PM; 2:50, 3:25, and 4:00 PM. No memberships req'd. Higher of May 2025 USCF and current NWSRS ratings used for pairings & prizes. A new (randomized) opening position in each round. Players have 2 minutes before clocks start to examine the opening position. Prize fund: \$300/b20. 1st \$80, 2nd \$60, 3rd \$40, 1st U2000 / U1700 / U1400 / Unrated \$30.

Washington Open Robson Puzzle Solving

Sat, 05/24 @ 4:45 PM – 5:30 PM (between rounds 1 & 2)

Solve 16 chess puzzles in 45 minutes. Write solutions on paper. Evaluation based on accuracy and completeness. EF: \$15. Registration: 4-4:30 PM. No memberships req'd. Prize fund: \$150/b20. 1st \$50, 2nd \$35, 3rd \$20, 1st U1700 / U1400 / Unrated \$15.

Washington Open Wenjun Chess Workshop for Girls & Women

Sat, 05/24 @ 6 PM – 8 PM (during round 2)

Workshop led by WFM Chouchan Airapetian (chornyaa@msn.com, 206-914-4252), experienced chess coach, organizer, and promoter, former US Women's Championship contender, WCF Girls' and Women's Chess Director. Registration: 5:45-6 PM. EF: Free! Schedule: 6-7 PM: "How to develop & cultivate girls' and women's chess." 7-8 PM: Q&A, complimentary pizza & refreshments, and ladies' bughouse.

Washington Open 3rd Annual Carol Kleist Memorial Adult Swiss

Sun-Mon, 05/25-26 @ 11 AM and 4:30 PM (during rounds 3-6)

Sponsored by *Seattle Chess Club (SCC)* with generous support from Henry Yan. Format: A 4-round Swiss in two sections: Botvinnik (1500+) and

Korchnoi (U1500); may be merged if small. 1 half-point bye available. USCF rated only. TC: G/120; +30. EF: \$50 online (by Sat, 05/24 @ 5 PM) or \$60 on-site; less \$10 for SCC members. EF waived for unrated players who purchase memberships. Registration: Sun, 05/25 @ 10-10:30 AM (unless starting with a half-point bye). US Chess and WCF/OCF/ICA memberships req'd. May 2025 USCF rating used for section, pairings, & prizes. Gtd. prize fund: \$1,000.

Botvinnik: 1st \$240, 2nd \$150, 3rd \$120, 1st U1650 \$80.

Korchnoi: 1st \$120, 2nd \$100, 3rd \$80, 1st U1300 \$60, 1st Unrated \$50.

Washington Open Carlsen Rapid

Sun, 05/25 @ 2 PM – 5 PM (between rounds 3 & 4)

Format: A 5-Round Swiss in two sections: Kasparov (1600+) and Anand (U1600); may be merged if small. 2 half-point byes available. USCF Quick rated; Kasparov section is FIDE Rapid rated too. TC: G/12; +4. EF: \$35 online (by Sat, 05/24 @ 5 PM) or \$40 on-site. Players rated 1500+ may play up into Kasparov (\$10 fee). Current US Chess and WCF/OCF/ICA memberships req'd. Registration: 1-1:45 PM. Rounds: 2 PM, 2:35, 3:10, 3:45, 4:20 PM. Highest of May 2025 USCF Quick, May 2025 FIDE Rapid, and current NWSRS ratings used for section, pairings, & prizes. Prize fund: \$950/b30. Kasparov: 1st \$150, 2nd \$110, 3rd \$80, 1st U2000 / U1800 \$60, Biggest Upset Win: \$25; Best Hairstyle / Best Footwear \$10.

Anand: 1st \$100, 2nd \$80, 3rd \$60, 1st U1400 / U1200 / U1000 / Unrated \$40, Biggest Upset Win: \$25; Best Hairstyle / Best Footwear \$10.

Washington Open Awonder Liang Bughouse

Sun, 05/25 @ 3 PM – 4:15 PM (between rounds 3 & 4)

A 7-round Single Swiss in one section. 2 half-point byes available. Max avg team rating: 1800. Unrated. TC: G/3; +0. EF: \$20/player. No memberships. Register: 2:15-2:45 PM. Rounds: 3 PM, 3:10, 3:20, 3:30, 3:40, 3:50, 4 PM. Higher of May 2025 USCF Blitz and current NWSRS ratings (if unrated, up to 1300, based on age) used for pairings & prizes. Team prizes: \$400 (based on 20 teams): 1st–3rd: \$100 / \$70 / \$50; 1st–3rd K-6: \$50 / \$40 / \$30; Biggest Upset Win: \$30; Best Sportsmanship: \$30.

Washington Open Firouzja Bullet

Sun, 05/25 @ 5 PM – 5:50 PM (between rounds 3 & 4)

Format: A 5-Round Swiss in one section. 2 half-point byes available. Unrated. TC: G/2; +1. EF: \$10. No memberships req'd. Registration: 4:30-4:50 PM. Rounds: 5 PM, 5:10, 5:20, 5:30, 5:40 PM. Higher of May 2025 USCF Blitz and current NWSRS ratings used for pairings & prizes. Prize fund: \$200/b20. 1st–3rd: \$50 / \$40 / \$30, 1st U2000 / U1600 / U1200 / Unrated \$20.

Washington Open WaldowChess Rapid

Mon, 05/26 @ 1:45 PM – 3:50 PM (between rounds 5 & 6)

With generous support from Mark Waldow. Format: A 5-round Swiss in one section. 1 half-point bye available, if requested by end of round 2. Unrated. TC: G/8; +3. EF: Free! No memberships req'd. Registration: online (by Sun, 05/25) or on-site (Mon @ 1-1:30pm). Check-in req'd by 1:30pm, including for online registrants. Rounds: 1:45 PM, 2:10, 2:35, 3, and 3:25 PM. Higher of May 2025 USCF and current NWSRS ratings used for pairings & prizes. Play begins with White to move, having already played e4 & d4. In return, Black receives draw odds and is allowed to swap their king and queen after White's next move. Prize fund: \$2,000.

1st–8th: \$500 / \$400 / \$300 / \$250 / \$200 / \$150 / \$100 / \$50; Biggest Upset Win \$50.

Washington Open Ignacio Perez Memorial Blitz

Mon, 05/26 @ 8 PM – 10:40 PM (after round 6)

Format: An 11-Round Swiss in two sections: Nakamura (1600+) and Tal (U1600); may be merged if small. 3 half-point byes available. USCF Blitz rated; Nakamura section is FIDE Blitz rated too. TC: G/3; +2. EF: \$30 online (by Sun, 05/25 @ 5 PM) or \$35 on-site. Players rated 1500+ may play up into Nakamura (\$10 fee). Current US Chess membership and WCF/OCF/ICA membership req'd. Registration: 7:30-7:50 PM. Rounds: 8 PM, 8:15, 8:30, 8:45, 9, 9:15, 9:30, 9:45, 10, 10:15, and 10:30 PM. Highest of May 2025 USCF Blitz, May 2025 FIDE Blitz, and current NWSRS ratings used for section, pairings, & prizes. Prize fund: \$800/b30.

Nakamura: 1st \$120, 2nd \$100, 3rd \$80, 1st U2000 / U1800 \$60;

Tal: 1st \$100, 2nd \$80, 3rd \$60, 1st U1400 / U1200 / U1000 \$40, 1st Unr. \$30.

TOURNAMENTS



Venue

7212 Woodlawn Avenue NE
Seattle, WA 98115

[info & events calendar](#)
www.seattlechess.club

tournament signups & inquiries
contact@seattlechess.club

– or –

SCC Tournament Director
same address as above

*Wednesdays are for
casual play. It's free!
Come anytime 7-11pm.*

May 10

3-round round-robin. 4-player sections by close rating. **Time control:** Game/85 + 10 sec. increment. **Entry fee:** \$15 (+\$10 day membership for non-SCC). **Prizes:** winner of each 4-player quad wins free entry to next Quads played within 3 months. **Registration:** 9:15-9:45am. **Rounds:** 10am, 2 & 6pm. **Byes:** 0 – must play all 3 rounds! US Chess membership req'd.

May Quads

May 25-26

See below.

Carol Kleist Memorial Adult Swiss

May 2, 9 16, *, 30

One US Chess-rated round per Friday night, 4 rounds per month, at 7:30pm. **Time control:** 40 moves in 90 minutes + 10 sec. increment, followed by sudden death 60 minutes + 10 sec. increment. Free for SCC members, \$5/night others. Drop in for any round!
[*no game on 5/23 due to WA Open]

May Flowers

Coming up in June & July:

- **June Quads** – Saturday June 7, tentative, to be confirmed.
- **Emerald City Open** – June 21-22, tentative, to be confirmed. 5-round Swiss, 50-80 player capacity.
- **Seattle Seafair Open** – weekend in mid/late July. 5-round Swiss, 2-3 sections, 80-100 player capacity.

Check our events calendar periodically for confirmed dates.

~ SCC Annual Meeting ~

- Friday, May 2, 6:30pm at the club
- come and hear about the club's past year accomplishments & future plans
- mix with other club members and friends before the 7:30pm Friday game
- members vote on the club's Board of Directors for 2025-26
- pizza and drinks provided

3rd Annual Carol Kleist Memorial Adult Swiss

@ WA Open - Redmond Marriott

- ❖ A 4-round Swiss in 2 sections: Botvinnik (1500+) and Korchnoi (U1500); may be merged if small.
- ❖ **Time control:** Game/120 + 30 second increment.
- ❖ **Rounds:** Sunday-Monday 5/25-26, 11am & 4:30pm both days.
- ❖ **Entry fee:** Online by Saturday 5/24 at 5pm – \$40 SCC members, \$50 others. Onsite add \$10. EF waived for unrated players who purchase memberships. US Chess and WCF/OCF/ICA memberships required.
- ❖ **Register** at NW Chess Online System: <https://nwchess.com/OnlineRegistration/>
- ❖ **Registration:** Sunday 5/25 @ 10-10:30 AM (unless starting with a half-point bye).
- ❖ **Guaranteed prize fund: \$1,000.**
 - **Botvinnik:** 1st \$240, 2nd \$150, 3rd \$120, 1st U1650 \$80.
 - **Korchnoi:** 1st \$120, 2nd \$100, 3rd \$80, 1st U1300 \$60, 1st Unrated \$50.
- ❖ 1 half-point bye available.

~ generously supported by Gerald Larson & Henry Yan ~



Washington Father's Day Open



June 14-15, 2025

Hotel 116 Bellevue

625 116th Ave NE, Bellevue, WA 98004

Format: A 5-round Swiss in three sections: **Skywalker Open, Kenobi U1800, and Solo U1400.**

Entry fee: \$100 by 6/7, \$120 after. \$50 play-up fee if rated 1600-1799 or 1200-1399 in both NWSRS and USCF and playing up in Skywalker Open or Kenobi U1800, respectively. Free entry for chess Jedis rated 2200+ USCF. Open to all junior + adult players. Maximum of 190 players, please register early to reserve your spot!

Schedule: Arrival: 8-8:45am. Rounds: Saturday @ 9am, 2pm, 7pm. Sunday @ 10am, 3pm.

Closing Ceremony + Blitz Tournament: ~ 7pm or asap.

Time Control: G/90; +30. Late default: 30 minutes.

Rating: Dual NWSRS + US Chess Rated. Skywalker Open + Kenobi U1800 are also FIDE rated. Higher of current NWSRS or June 2025 US Chess rating will be used to determine section, pairings, and prizes.

Memberships: US Chess and WCF/OCF/ICA memberships required; must be paid at the time of registration.

Prize Fund: \$5,000 based on 100 paid entries.

Skywalker Open: 1st-4th: \$450-\$350-\$250-\$200, 1st-2nd U2200: \$150-\$125, 1st-2nd U2000: \$150-\$125.

Kenobi U1800: 1st-4th: \$400-\$300-\$200-\$150, 1st-2nd U1700: \$125-\$100, 1st-2nd U1500: \$125-\$100.

Solo U1400: 1st-4th: \$300-\$225-\$175-\$125, 1st-2nd U1200: \$100-\$75, 1st-2nd U1000: \$100-\$75.

Special Prizes (per section):

Biggest Upset Win: \$20/rd., Best Female Player (by TPR): \$25, Best Dressed: \$20/day, Best Dad Player (by TPR): \$25, Best Parent/Child Team (by avg. TPR): \$25.

Byes: Up to 2 half-point byes available if requested before the end of round 2.

Registration: Online at nwchess.com/OnlineRegistration. Pay by Credit/Debit, PayPal/Zelle (ID: washingtonchessfederation@gmail.com), Venmo (@WACHess), SettleKing (Washington Chess Federation), or write a check to Washington Chess Federation. **Payment due upon registration; players listed as unpaid for more than 3 days after registering will be withdrawn from the tournament. Registration + payment deadline: Fri, June 13 @ 5pm.** Unpaid players will be removed from the roster after the deadline.

Father's Day Blitz: Sunday 7-9pm (after rd. 5 of main tournament). **Entry Fee:** \$25. **Format:** A 9-Round Single Swiss in one section, 2 half-point byes available. Dual US Chess Blitz + FIDE Blitz rated. **TC:** G/3; +2. **On-site registration:** 6:00-6:45pm. Rds. Sun @ 7pm, 7:15, 7:30, 7:45, 8, 8:15, 8:30, 8:45, 9pm. Closing Ceremony ~ 9:15pm or asap. Current US Chess membership required. Higher of June 2025 US Chess Blitz or Regular rating used to determine pairings and prizes. **Prize Fund: \$700** (based on 50 paid entries)

1st - 3rd: \$150-100-80, 1st U2000/U1800/U1600/U1400/U1200/U1000/Unrated: \$40. Biggest upset win: \$10/rd.

Questions - Josh Sinanan, WCF President, 206-769-3757, washingtonchessfederation@gmail.com



1989
OLAF ULVESTAD
1991
ROBERT EDBERG
1994
VIESTURS SEGINS
1995
ELMARS ZEMGALIS
1990
JAMES MCCORMICK
1991
VIKTORS PUPOLS

1992
VIKTORS PUPOLS
1993
VIKTORS PUPOLS
1994
VIKTORS PUPOLS
1995
VIKTORS PUPOLS
1996
VIKTORS PUPOLS
1997
VIKTORS PUPOLS
1998
VIKTORS PUPOLS
1999
VIKTORS PUPOLS
2000
VIKTORS PUPOLS
2001
VIKTORS PUPOLS
2002
VIKTORS PUPOLS
2003
VIKTORS PUPOLS
2004
VIKTORS PUPOLS

1986
JOHN BRADY
MATT EDWARDS
1987
BOBBY FERGUSON
1988
MATT EDWARDS

1989
VIKTORS PUPOLS
1990
NEIL SALMON
1991
NEIL SALMON
1992
GEORGI ORLOV
1993
GEORGI ORLOV

1994
MIKE OSHIRO
1995
GEORGI ORLOV
1996
ELVA DONALDSON
1997
GEORGI ORLOV

1998
SLAVA MIKHAILUK
1999
GEORGI ORLOV
2000
WILLIAM SCHILL

HARLEY GRANT
2002
NEIL SALMON
2003
SLAVA MIKHAILUK
2004
SLAVA MIKHAILUK