

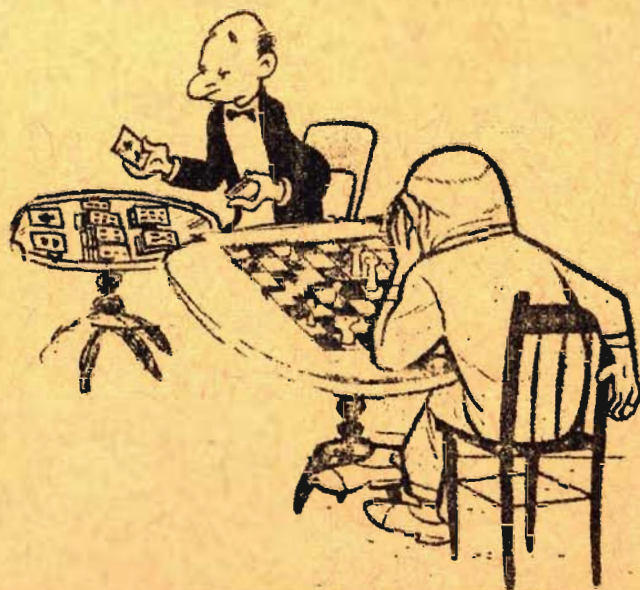
WASHINGTON

CHESS

LETTER

JUNE

1958



WASHINGTON CHESS LETTER

OFFICIAL PUBLICATION OF
Washington Chess Federation

EDITOR

D. E. WADE 11023 25th N. E. SEATTLE 55

PUBLISHER

F. H. WEAVER 501 OLYMPIC PL. SEATTLE 99

CIRCULATION

R. R. MERK 1026 E. 71st SEATTLE 15

MEMBERSHIP DUES, \$2.00 A YEAR, INCLUDES
SUBSCRIPTION (12 ISSUES). SEND MONEY TO
W.H. RALEIGH, TREASURER, 4312 WOODLAND
PARK AVENUE, SEATTLE 3, WASH.

AFFILIATED W. C. F. CHESS CLUBS

Seattle Spokane Tacoma Olympia West Seattle
Kitsap Tri-Cities Boeings McNeil

GOLDEN ROSE

NATIONALLY RATED

BY U.S.C.F.

OL

Saturday and Sunday June 14th and 15th is the GOLDEN ROSE OPEN in Portland. A 5 round Swiss with trophies for the prize winners. Help Portland celebrate the 50th Rose Festival which corresponds to the Seattle Seafair in color and gaiety.

If you are a member of the United States Chess Federation, the entry fee is only \$1. If you are not, the entry fee is \$5. You become a member of the United States Federation and receive 24 issues of 'Chess Life' during the following year.

This tourney starts at 9:30 a.m. at the Portland YMCA. If you can make it, do so. You are going to have a good time.

B.C. EXPERTS IN SEATTLE JUNE 22

Hey, here's some big news! Seattle Chess Experts and Masters have a big opportunity to show their stuff on SUNDAY, JUNE 22nd. An eight man team of British Columbia's best will invade Seattle on that day at one p. m. to match their wits with our finest players!

The location is SEATTLE CHESS CENTER at 718 Pine Street. If we can get up a team of such players as PUPOLS, ULVESTAD, MCCORMICK, SEGLINS, GRIFFITHS, PATTERSON, ZEMGALIS, and one other player almost as good, we might be able to handle this Canadian team.

Since all of the best players never seem to be always available, it would be a good idea of course if our lesser experts and class A players showed up. We will probably need your help!

REMEMBER, ONE P. M. SUNDAY JUNE 22
AT ULVESTAD'S CHESS CENTER, 718 PINE ST.

SEAFAIR AUG. 2-3

The annual SEATTLE SEAFAIR will be on Saturday and Sunday AUGUST 2nd and 3rd this year. It will start at 9 a.m. at the Seattle YMCA and will be a SIX ROUND SWISS. Solkoff Points will break ties & forfeit losses will be considered drawn games as far as tie-breaking is considered. The same will be true of forfeit wins.

Since there will be 6 rounds, the time control will limit each round to 3 hours. Each player must make 40 moves in $1\frac{1}{2}$ hours. After 3 hours total elapsed time, unfinished games will be considered draws for pairing purposes except where an appointed committee sees that one player has an obvious win in which case the game will be adjudicated. Unfinished games must be made up quickly as adjudication would be forced if this was not done.

Prizes should be very large with a 25 dollar minimum for 1st. Entry fee is \$3.

MCCORMICK IS SEATTLE CHAMP

On Saturday and Sunday May 17-18, at the Seattle Chess Club, JIM MCCORMICK won the Seattle Open with a 5-0 score. Only eight players turned out and the hoped-to be strong entry failed to materialize. It was hardly more than a woodpusher affair as far as the strength of the players was concerned. The strong players boycotted, partially because of the heat (87 degrees over the weekend) and also because of the presence of McCormick who has been butchering the experts lately in informal meetings.

So even though the turnout was lacking in strength, the new Seattle Open king is not! A worthy champion - too bad competition worthy of him was not available.

TED DAVIDSEN returned to the tournament wars after a long absence. Only surprise of the tourney was PAT HICKEY with a 4-1 score. He knocked off DAN WADE in the fourth round keeping Wade from his usual second place finish.

Three enthusiastic out-of-towners in the tourney were KEN DART of Everett, EARL KNAPP of Gig Harbor and ARCHIE FREDRICKSON of Bothell.

DWIGHT EDWARDS of West Seattle showed much improvement giving Wade a terrifically hard-fought fight before losing to him.

Wade, chided for showing lack of imagination in his play, attempted to sacrifice against Hickey and got his ears pinned back for doing so. Exit many rating points

	Score									
1. Jim McCormick	W6	W2	W3	W4	W5	5	-	0	13	$\frac{1}{2}$
2. Pat Hickey	W4	L1	W7	W3	W6	4	-	1	13	$\frac{1}{2}$
3. Daniel E. Wade	W5	W7	L1	L2	W8	3	-	2	13	
4. Earl Knapp	L2	W8	D5	L1	W7	2	$\frac{1}{2}$	-2	$\frac{1}{2}$	13
5. Archie Fredrksn	L3	W6	D4	W8	L1	2	$\frac{1}{2}$	-2	$\frac{1}{2}$	12
6. Ted Davidsen	L1	L5	W8	D7	L2	1	$\frac{1}{2}$	-3	$\frac{1}{2}$	13
7. Dwight Edwards	W8	L3	L2	D6	L4	1	$\frac{1}{2}$	-3	$\frac{1}{2}$	11
8. Ken Dart	L7	L4	L6	L5	L3	0	-	5	11	

Originally scheduled to end on Monday evening, the tourney was finished instead by only 5:30 on Sunday evening with four of the rounds played that day:

First prize was \$13, second \$8 while third received his \$3 entry fee back.

WADE WINS A TOURNEY

DAN WADE won the fourth North East Seattle Invitational with three wins, a loss and two draws for a 4-2 score. The games were played April 10th, April 24 th, and May 2nd first at Eilms's home, then at Morris's and finally at Erickson's.

Wade opened the tourney by defeating Erickson 2-0, the first time Erickson had failed to at least break even. Meanwhile, Eilms and Morris played two draws.

All other sessions were 1-1 affairs with Eilms being the drawing master of the tourney with four. Games ranged in quality from the ridiculous to the sublime.

DAVID ERICKSON has progressed steadily downhill in these tournaments scoring 5-1, 4-2, 3-3 and finally 2-4. He still leads in over-all score with 14-10. Poor OLIVER MORRIS has yet to win a tourney, but has never ended last either and his over-all score is second with 12-12. DAN WADE'S over-all score is 11 $\frac{1}{2}$ -12 $\frac{1}{2}$. EILMES has an over-all record of 10 $\frac{1}{2}$ -13 $\frac{1}{2}$.

A fifth tournament is in progress.

	W	L	D				
1. Daniel E. Wade	W4	W4	W3	L3	D2	D2	3-1-2
2. Don Eilms *	D3	D3	W4	L4	D1	D1	1-1-4
3. Oliver Morris	D2	D2	L1	W1	L4	W4	2-2-2
4. David Erickson	L1	L1	L2	W2	W3	L3	2-4-0

* Eilms and Morris tied for second place.

WADE 7 $\frac{1}{2}$ MORRIS 2 $\frac{1}{2}$

In sessions between May 5th and May 13th, DAN WADE defeated OLIVER MORRIS 7 $\frac{1}{2}$ to 2 $\frac{1}{2}$ in a ton game match at \$1 per game.

The match started out to be a close affair with the first three games drawn. The seventh and tenth games were also with out a winner but all others were won by Wade giving him 5 wins, 0 losses and five draws. Wade should have won the 2nd game and Morris should have won the seventh.

Added to the previous match, Wade is ahead 13-1 and 6 drawn in the 20 played.

NORTHWEST RATINGS

BI-MONTHLY LIST OF RATING CHANGES

Inactive players are not included in this bi-monthly list. The annual list of ALL players is published each January. The following list includes all events and matches through April as published in Chess Letter, plus the Pacific Northwest Open, Inland Empire Open, Olympia Championship, Boise City Championship and Canyon County Tournament. Agreed draws are not rated.

NORTHWEST MASTERS (2150 UP)

Dalbergs, Ivars	2162
McCormick, James H.	2180
Ulvestad, Olaf	2160
Zemgalis, Elmars	2251

NORTHWEST EXPERTS (2000 UP)

Buckendorf, Glen	2060
Joachim, Charles	2028
Jones, Kenneth R.	2052
Lapiken, Dr. Peter	2015
Patterson, G.S.G.	2071
Pupols, Viktors	2147
Seglins, Viesturs	2115
Wade, Daniel E.	2002
Walker, Robert	2005

CLASS A (1800 UP)

Aldape, Dr. Hector	1861
Almond, Dr. John	1942
Ayer, Ellis C.	1834
Bader, Max	1912
Bell, John	1825
Conner, Walt	1895
Cornelius, Gordon	1986
Doi, Bob	1831
Edberg, Robert E.	1960
Egg, Edna	1847
Eilmes, Donald	1891
Ellis, A.B.	1918
Erb, Rody	1880
Erickson, David	1896
Feuerberg, Gary	1855
Frannett, Mike	1806
Grannis, Dave	1865
Groenig, Dr. David	1983
Harrison, David	1997
Hewitt, Charles R.	1936
Holzinger, Robert	1900
Hughart, Harold	1971
Hughes, Roy	1834
Jacobs, Nolton	1909
Johnson, Donald W.	1917

Kittredge, Robert	1888
Mage, Max	1832
Makens, Thomas E.	1830
Meador, Duane	1909
Moore, Deane	1974
Morris, Oliver S.	1805
Munro, James	1855
Murray, Dr. Arthur A.	1896
Nourse, Jack	1834
Parker, Dr. Griffith	1814
Pawley, Richard	1828
Ray, Ronald	1823
Rehberg, George	1928
Schmoyer, Clyde	1820
Somsen, Dick	1935
Stanke, Jerry E.	1923
Stewart, Charles H.	1928
Tveden, Ed.	1830
Vandenburg, Dick	1954
Vellias, Russell	1958
Voget, William E.	1882
Weaver, F. Howard	1806
Zweers, Gerrit W.	1886

CLASS B (1600 UP)

Aarnas, Arnt	1647
Anderson, John	1780
Batie, Ralph	1630
Bauer, Wayne	1695
Bender, Albert	1781
Bixler (Walla Walla)	1623
Bjornsen, Dale	1678
Bochenski, Louis	1607
Brandal, Willy	1649
Brandt, Howard	1726
Breham, Earl	1759
Bricher, Joseph	1620
Brown, R. (Seattle)	1615
Butler, J.	1612
Cairncross, R.W.	1696
Carter, Rev. A.	1615
Conway, Mike T.	1605

Any city or WCF club may hold its own tournaments for

"Expert" Candidates!

open to 7 or more NW-rated-Class-A players as per last published ratings (other rating systems do not qualify)

**THE CLEAR WINNER (no ties)
IN 5 OR MORE ROUNDS
BECOMES A RECOGNIZED EXPERT
IN NORTHWEST RATINGS**
for at least six months.

Tournaments can be held for B players to advance to Class A. Mixed or unrated entries nullify events for special purpose altho the normal ratings would be made.

Corey, Don	1726
Cosho, John	1795
Coubrough, Leslie	1757
Cravens, Carl	1630
Davis, Ted	1742
Dolan, Phil	1764
Dolph, Phil	1786
Eddy, Buz	1671
Egg, Doyle	1647
Eilmes, Mary	1608
Eitel, Richard	1782
Fredrickson, A.	1788
Fricke, Ray	1715
Friedman, Cyrus	1720
Garrott, John	1618
Geary, Charles	1690
Gell, John	1652
Gillette, William	1776
Hake, Gale	1650
Hanson, Bryant	1756
Hansen, Ralph	1739
Hardin, Robert	1709
Harle, Albert L.	1780
Harmeson, Chester	1746
Harmon, Clark	1795
Harris, C.E.	1693
Hay, Edward	1628
Healy, Paul	1699
Herman, Bill	1740
Hiatt, Dick	1602
Hickey, Pat	1651
Hoge, William H.	1785
Horstman, E.H.	1758
Howard, Fred M.	1613
Hunt, Elmer E.	1664
Hunter, Neil	1648
Ida, Gerald	1790
Jaensch, Egon	1609
Jester, Jim	1602
Johnson, Alfred	1751
Kendall, Don	1781
King, Neal	1687

GRIFFITHS KEEPS JUNIOR TITLE

W. SEATTLE NEWS

On Saturday and Sunday May 3rd and 4th at the Seattle Chess Club, CHARLES GRIFFITHS of Seattle again proved to be Washington's greatest junior chess player. Fifteen entered and Charlie set down 5 opponents for a perfect score retaining the junior crown won the year before on a fluke. Remember JIM MCCORMICK demonstrating which way the pawns move?

ROBERT HOLZINGER and MIKE FRANNETT, a pair who lost early round games and didn't play the champ, each scored 4-1 and finished second and third respectively.

DAVE GRANNIS won his first three then lost to GRIFFITHS and HOLZINGER to fall to a fourth place tie with SCOTT LOCKHART of Tacoma.

ROBERT KUVARA was the only other player to finish with a plus score taking 6th place. AL BENDER and JOHN SCHROEDEL tied for 7th and 8th places each with $2\frac{1}{2}$ - $2\frac{1}{2}$. In 9th was WILLY BRANDAL also with $2\frac{1}{2}$ - $2\frac{1}{2}$.

Tenth with the highest Solkoff in the tourney was DON COREY with 2-3. Also with 2-3 in 11th place was WALTER ELLIOTT. 12th place was DALE BJORNSEN with $1\frac{1}{2}$ - $3\frac{1}{2}$. BUZ EDDY directed the tourney as well as play in it and took 13th with 1-4. KING was in 14th with a bye helping him build a score of 1-4. PAT HICKEY was last with 0-5 but lost only one game, forfeiting the others.

The West Seattle Chess Club Senior team was defeated 4 to 2 by a Junior All Star team on Friday evening, May 9th at the High Point Recreation Center.

WEST SEATTLE CLUB 2.		JUNIOR ALL STARS 4.	
Max Mage	1	Dave Grannis	0
Eugene Vukonich	$\frac{1}{2}$	Al Bender	$\frac{1}{2}$
Fred M. Howard	$\frac{1}{2}$	Dale Bjornsen	1
Killian Seckamp	0	Jim Munro	1
Robert Schrank	0	Willy Brandal	1
Norman Samish	0	Phil Moormann	1

WEST SEATTLE LADDER

Max Mage 353	Al Bender 300
Fred Howard	.. 340	Norman Samish	.. 300
E. Vukonich	.. 328	Willy Brandal	.. 300
K. Seckamp	... 319	John Schroedel	.. 300
B. Weisscher	.. 315	Buz Eddy 298
S. Woodward	.. 312	D. Bjornsen 296
Winters 311	R. Schrank 275

The West Seattle Club meets on second and fourth Fridays each month at the High Point Recreation Center.



			W	L	D	Score	Solk.	Rating
1. Charles Griffiths	Seattle	W9 W10 W8 W4 W5	5	0	0	5 - 0	13.0	2103
2. Robert Holzinger	Seattle	W7 L8 W10 W12 W4	4	1	0	4 - 1	11.0	1550
3. Mike Franett	Seattle	W12 L5 W13 W10 W7	4	1	0	4 - 1	9.5	none
4. Dave Grannis	Seattle	W15 W6 W12 L1 L2	3	2	0	3 - 2	15.5	1797
5. Scott Lockhart	Tacoma	L10 W3 W11 W6 L1	3	2	0	3 - 2	15.5	1587
6. Robert Kuvara	Seattle	W11 L4 W14 L5 W8	3	2	0	3 - 2	10.5	1566
7. Al Bender	Seattle	L2 WF15W9 D8 L3	2	2	1	$2\frac{1}{2}$ - $2\frac{1}{2}$	15.0	1674
8. John Schroedel	Seattle	W13 W2 L1 D7 L6	2	2	1	$2\frac{1}{2}$ - $2\frac{1}{2}$	15.0	1597
9. Willy Brandal	Seattle	L1 W13 L7 W11 D12	2	2	1	$2\frac{1}{2}$ - $2\frac{1}{2}$	11.0	1559
10 Don Corey	Seattle	W5 L1 L2 L3 W14	2	3	0	2 - 3	16.5	none
11 Walter Elliott	Seattle	L6 Bye L5 L9 W13	2	3	0	2 - 3	9.5	1568
12 Dale Bjornsen	Seattle	L3 W14 L4 L2 D9	1	3	1	$1\frac{1}{2}$ - $3\frac{1}{2}$	14.0	1661
13 Buz Eddy	Seattle	L8 L9 L3 W14 L11	1	4	0	1 - 4	11.0	1398
14 Joe King	Tacoma	Bye L12 L6 L13 L10	1	4	0	1 - 4	7.5	none
15 Pat Hickey	Seattle	L4 LF7 LF LF LF	0	5	0	0 - 5	5.0	1551

This was the first time in the history of the Washington Junior that a winner was able to repeat his triumph. Also this is the largest State Junior we have had.

SOLVERS' CONTEST

THIS MONTH

We present two positions again. The lower side of the diagram is White in each case. The Forsyth notation will assist you in deciphering the vagaries of our little jim-dandy printing press (\$27.95). (Boys! Make Big Money!)

As each player is individually playing for a total of 50 points it does not matter whether he misses a month, or starts late. As soon as he reaches 50 he is awarded the prize or is listed on the honor role, depending on whether he is playing for a prize or fun. See below.

LAST MONTH

Solvers were not unanimous in their replies last month. Wrong solutions were received from some who seldom miss tougher ones than these.

B. Gaspar Problem

1. Q-KR7 any
2. Mate

Yates v Buerger Game

1. B-K6 if B-K6dch
 2. R-B2dch
- or if 1. QxB
 2. R-B8ch K-N2
 3. P-K8/Q no perp.

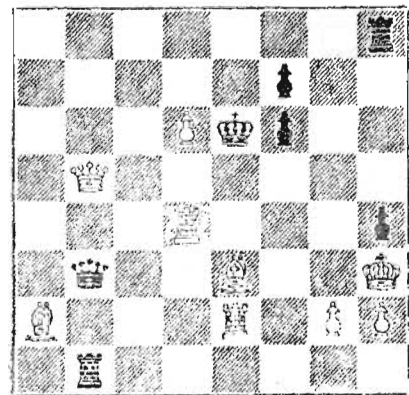
Five of our solvers sent in the move that was made in the actual game, which ended in a draw by perpetual check.

1. R-B8ch K-N2
2. P-K8/Q B-K6dch
3. K-R3 Q-R4ch etc.

Fifty points are divided each month among those who inclose a dime for a prize award. If two positions are used the total number of solutions are divided into 25 points for each. As soon as any player wins a total of 50 points his subscription to Chess Letter is extended 6-months. Those who do not want to play for a prize are awarded honorary points, and their scores will also be listed each month. These points are equal to, but do not reduce the prize points, which are indicated by (*).

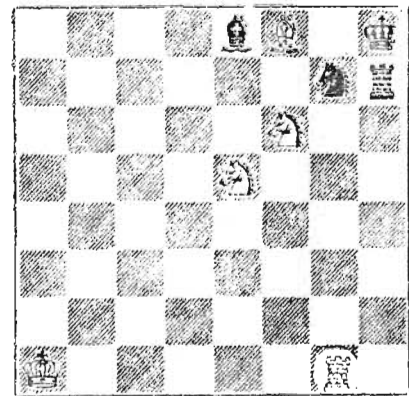
Kittredge	10.42*	Goodwin	4.17*
Thompson	10.42*	Joachim	4.17*
Bloomquist	10.42*	Tuggle	4.17
Bader	10.42*	Kendall	4.17
Ballantine	10.42		

We know there are more solvers than that because we have had as many as 40 send in solutions in previous contests. What happened? If some of our loyal readers get a dollar's worth of Chess Letter for 50¢ we don't know who we'd rather send it to, but we do hope some of the others will crank up their brains. SEND SOLUTIONS TO F.H. WEAVER, 501 OLYMPIC PLACE, SEATTLE 99, BEFORE JUNE 25th.



WHITE TO PLAY, MATE IN 2

7r
 5p2
 3Pkp2
 1Q6
 3R3p
 1q2B2K
 B3R1PP
 1r6

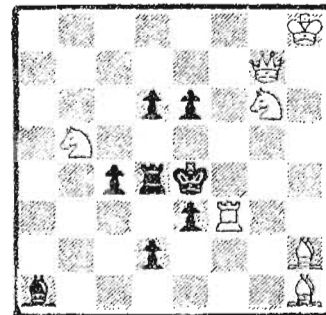


WHITE TO PLAY, MATE IN 3

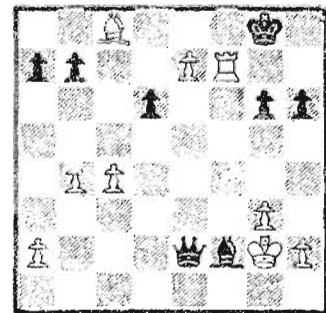
4bB1k
 6nr
 5N2
 4N3
 8
 8
 8
 K5R1

B. GASPAR

Brazil



White to play and mate in two moves.



5. Yates v Buerger
 Scarborough, 1927; White to play

Chess Around the World

NEW YORK

Bobby Fischer, fifteen-year-old U.S. Chess Champion, was given two Sabina World Airline tickets by the Garry Moore CBS-TV "I've Got a Secret" program. This will make it possible for Bobby to play a series of exhibition matches in Moscow this June and July, and to represent the U.S.A. in the Interzonal Tournament at Portoroz, Yugoslavia, August 5, to September 15.

The American Chess Federation has awarded \$250 each to Bill Lombardy and to Bobby Fischer for best service to American chess in 1957.

The competing masters have emerged from eight other Zonal Tournaments held throughout the world. The winner will become the next challenger for the world title. Reshevsky is also qualified for the Interzonal Tournament and intends to play.

CINCINNATI, OHIO

The 1958 Cincinnati Championship Tournament was won by Chas. Heising 10-0, and second in the 32 player event was Eugene Warner, 8-2. The event had not been held for about 15 years, was sponsored by the University of Cincinnati Chess Club which created a new trophy to revive the event. Rea B. Hayes was third with 7½-2½ and Ron Weidner had 7-3 to win fourth place. Warner, the runner-up, is from Seattle, Washington.



LEXINGTON, KENTUCKY

Eugene Warner of Cincinnati, scored 4½-½ to win the 1958 Kentucky State Open, which had 22 entries from four states. T.A. Kuhn of Dayton, and Charles Weldon, of Milwaukee, were second and third with 4-1.

HOMESTEAD, FLORIDA

The U.S. Junior Chess Championship will be held July 8-12, at Homestead, Florida, with tournaments also being scheduled for parents, relatives, and adults who help juniors compete. Other titles will be conferred for the U.S. Girls Championship, and the U.S. Junior State Team of Four.

MOSCOW, RUSSIA

Mikhail Botwinnik regained the world chess championship in the match with Vassily Smyslov, by drawing the 23rd game, a Reti, to give him a winning margin of 12½-10½.

Smyslov had won the 22nd game of the match in defense of his title, with a first appearance of the Dutch Defense in the match. Smyslov, with the black pieces, set up a king side attack by opening the KN file and doubling his rooks. The 21st game was a 23-move draw after an early exchange of Q's in a Sicilian Defense.

The Sicilian Defense received a good deal of exploratory trial during the match due to an opening novelty of Smyslov's which may make a new page in books on chess openings.

SICILIAN DEFENSE

V. Smyslov, White	M. Botwinnik, Black
1 P-K4	P-QB4
2 N-KB3	N-QB3
3 P-Q4	PxP
4 NxP	N-B3
5 N-QB3	P-Q3
6 B-K2	P-KN3
7 B-K3	B-N2
8 P-KR4	

The novelty. The exact sequence of moves was played to this point in games 5, 7, and 9, after which Botwinnik returned to a Caro-Kann Defense.

8	O-O
9 P-R5	P-Q4
10 PxNP	RPxP

This game was won by Smyslov, and game 7 returned to this point when Botwinnik changed to ...BPxP to gain a better game and a draw.

In game 9 Botwinnik varied at move 8 withP-KR4, and emerged with the better game after a little danger. Although Black gained ground it was insufficient to win and the draw was agreed after 40 moves.

The Caro-Kann, and the English Opening each received five trials during the match, and Indian Defenses accounted for the other games.

LAPIKEN WINS MONTANA OPEN

DR. PETER LAPIKEN, Inland Empire Open Champion now living in Missoula, Montana, won the 23rd Montana State Chess Tourney, held May 3-4 at Great Fall. Dr. Lapiken was undefeated in the 12 player, five round Swiss. ADAM SMITH was second with 4-1.

22 other players competed in a class "A" tournament run simultaneously with the Championship Tournament. JACK THOMPSON, 4-1, took the championship in this division edging out WASYL JAROSZ and DIRK DUYKERS & HELMER LUNDBERG on S-B points.

ROBERT HALLIBAUGH won the 11 - player Junior Tournament with 5-0.

1. Peter Lapiken	W6	W9	W4	W2	W3	5	-	0	13.50
2. Adam Smith	W5	W3	W7	L1	W8	4	-	1	9.00
3. James Sheirrie	W7	L2	W8	W4	L1	3	-	2	7.00
4. H. L. Maury	W11	W8	L1	L3	W6	3	-	2	5.00
5. Paul Shanley	L2	W11	L9	L6	W7	2	-	3	3.00
6. Theo Stelmach	L1	L10	W11	W5	L4	2	-	3	3.00
7. Ralph Hanson	L3	W12	L2	W9	L5	2	-	3	3.00
8. H. Bradshaw	W12	L4	L3	W11	L2	2	-	3	2.50
9. H. Wendel	D10	L1	W5	L7	L11	1 $\frac{1}{2}$	-	3 $\frac{1}{2}$	3.50
10 Buck Riley	D9	W6	LF	LF	LF	1 $\frac{1}{2}$	-	3 $\frac{1}{2}$	2.75
11 J. Felt	L4	L5	L6	L8	W9	1	-	4	1.50
12 Carl Brandvold	L8	L7	LF	LF	LF	0	-	5	0.00

MARYLAND

SFC ROBERT A. KARCH finished in a seven-way-tie for 6th place in the Maryland State Championship. Up until this tournament Karch had never beaten a rated expert in a tournament, but he broke the jinx in this tourney with wins over two experts.

Karch lost to two other experts and a third game was lost to master NORMAN T. WHITAKER.

The top twelve players.

1. Irving Kandel	6	7-8	George Hardman	4
2. Robert Simpson	5 $\frac{1}{2}$	7-8	Robert Karch	4
3. George Thomas	5 $\frac{1}{2}$	9.	George Trefzer	4
4. Michael Tillos	5	10	M. Tischtschenko	4
5. N. Whitaker	4 $\frac{1}{2}$	11	James C. Ream	4
6. Boris Garfinkel	4	12	A. G. Ashbrook	4

It was a seven round Swiss.

CHESS IN IDAHO

The April IDAHO CHESS QUARTERLY put out by DICK VANDENBURG, 913 N. 22nd. St. Boise, Idaho (\$1 per year) was the best yet! Northwest Ratings, match results, tournament notices, club tournaments, a covering of events in neighboring states plus three pages of games by EUGENE COWAN of Driggs, Idaho are the innards of a good chess magazine.

CANYON COUNTY and POCATELLO are the co-team champions of Idaho for 1958. In the finals they played a 6 to 6 tie. A barn storming Seattle junior team was defeated by the co-champs, losing to Canyon County 1-4 and losing to Pocatello by a 1 $\frac{1}{2}$ -3 $\frac{1}{2}$ tally. In other matches, the juniors tied Boise 2 $\frac{1}{2}$ -2 $\frac{1}{2}$ and defeated both Twin Falls and Rupert by 3-2 scores. JIM MUNRO, playing first board for the Seattle juniors, created a sensation by knocking over GLEN BUCKENDORF of Twin Falls and also BRYANT HANSON of Pocatello.

Details of this junior tour and other junior news will be found in the Junior Chess Letter put out by messrs. SCHROEDEL, EDDY, and HOORMANN.

DICK VANDENBURG and C. H. STEWART are tied for first in the 18 player Boise City Tournament each with 8-1. A playoff game ended in a draw and another attempt is going to be made to break the tie but wasn't made as the Idaho Quarterly went to press.

JERRY STANKE won Canyon County's 1957-1958 Tournament with 14 $\frac{1}{2}$ -1 $\frac{1}{2}$ barely edging out second place finisher A. B. ELLIS who scored 14-2 in the nine player double round robin affair.

DARRELL FREEMAN won the Class A division of the Rupert City Tourney with 5-0 in the six player round-robin. BILL SCHOFIELD won the Class B tourney with 4-0. It was a five player round-robin.

Twin Falls has been holding regular meetings and TED HARTWELL followed by L. KIMPTON head the club's eight player ladder.

WALLA WALLA UPSETS PEN.

The following news for the Washington Chess Letter almost deserves big headlines. The Walla Walla Valley Chess Club finally beat the Walla Walla Penitentiary! The big upset was accomplished on Friday evening, May 2nd. It was a very close match with the town team winning $7\frac{1}{2}$ to $6\frac{1}{2}$ after being defeated many times in the past by the inmate team - sometimes by quite big margins.

WALLA WALLA VALLEY	7 $\frac{1}{2}$	WALLA WALLA PEN.	6 $\frac{1}{2}$
Ken Hartwig	2	Rody Erb	0
Ed Nightengale	1	Nolton Jacobs	1
Neil Hunter	0	Richard Young	2
Lew Hartwig	$\frac{1}{2}$	Ronald Ray	1 $\frac{1}{2}$
Bill Krapfel	1	Ronald Raine	1
Earl Bixler	1	Martin Holohan	1
Neal King	2	S. Smith	0

CORRECTION: On page 12 of the Spokane vs. Prison match story in the May issue we are informed that there were several scores that were inaccurate. First, on top board the Spokane player was not ROBERT KITTREDGE but ROBERT "HITTREDGE". I think we can disregard this correction but on last board we have a legitimate correction - ALFRED JOHNSON and NOT Ronald Raine broke even in two games with Spokane's KARL AMDAHL.

The Eastmont Elementary School, at Montebello, Calif., has had chess instruction for some time under the guidance of Geo. Caterer, who has a favorite motto, "The brain of a boy is at its best when playing chess." Doubt was cast on this motto when Miss Penny Marceil, age 11, won a tournament in which 57 boys participated.

Russia's answer to America's 15-year-old chess champion, Bobby Fischer, is Ernest Kim, a 5-year-old prodigy who (if you can believe those Rooshians) has gained a third-category rating only six months after learning the game, and has been slaying the chess giants in his home town of Tashkent, in Central Asia.

OLYMPIA NEWS

On May 19th, a five man team from Longview visited Olympia and played 3 matches, losing to the Olympian first stringers $1\frac{1}{2}$ - $3\frac{1}{2}$ but winning $4\frac{1}{2}$ - $\frac{1}{2}$ and 2-1 against Olympian reserve teams.

LONGVIEW	1 $\frac{1}{2}$	OLYMPIAN FIRSTS	3 $\frac{1}{2}$
S. Ryan	0	C. Joachim	1
A. Krums	0	Ellis Ayer	1
Joe Gemar	0	Phil Stymans	1
Carl White	$\frac{1}{2}$	Harry Parmelee	$\frac{1}{2}$
Bud Lydic	1	Michaelis	0

LONGVIEW	4 $\frac{1}{2}$	OLYMPIAN 2NDS	$\frac{1}{2}$
S. Ryan	1	Chester Harmeson	0
A. Krums	1	M. Burnett	0
Joe Gemar	$\frac{1}{2}$	L. Bochensky	$\frac{1}{2}$
Carl White	1	B. Herman	0
Bud Lydic	1	C. Durword	0

LONGVIEW	2	OLYMPIAN 3RDS	1
A. Krums	1	Ed Goodwin	0
Joe Gemar	1	Doyle Egg	0
A. Krums	0	Edna Egg	1

Summarizing: Only BUD LYDIC, winner of the "B" trophy in the last Portland tourney, who won twice and JOE GEMAR with two draws survived the matches undefeated. The visitors proved weaker than the Olympian first team, but showed overwhelming superiority against the second and third strings.

Earlier, CHARLES JOACHIM played a simultaneous match against the Olympia players. On 12 boards he won 10 losing two (AYER and DAVIS.) Against JIM MOHS, Joachim played good old unorthodox chess looking more for brilliancy than soundness and perfection. Joachim unveiled a combination which needed for its perfection only the cooperation of his worthy opponent. He did not wish to spoil the fun and cooperated and the vultures were already circling over his agonizing and hopeless struggle. When Joachim left to make a move on the next board with mate in two all of the sudden he heard a very strange sound like the roar of a lion or the sobbing of an untamed singing saw. A look back found Mohs sound asleep! The poor guy had a back injury and took too many pills to kill the pain and fell into slumberland!

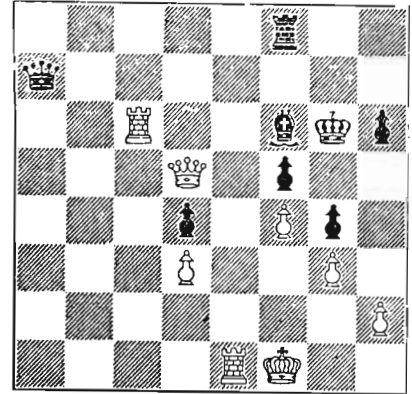
This condensed translation is from a Russian chess magazine, and is written by a Russian grandmaster of the older generation, who now restricts his activities to writing and instruction, as a member of the board of editors .

THE REALIZATION OF MATERIAL SUPERIORITY

BY P. ROMANOVSKY

We have enough evidence that masters and also chess players of the first and second grade have sufficient technique to win in a won position. It seems strange at first glance that highly qualified chess players, after having victoriously passed the most difficult stage of the game, should prove helpless when only the lighter part of the job has to be done. But in going through every competition for many years we find games in all of them in which a player gained a material advantage, and not only failed to win, but even lost. Failing to exploit a material advantage has nothing to do with technique of play, but is a result of many other factors.

After a great effort, you finally gain a material advantage against the stubborn defense of the opponent. "Now I am all right", you tell yourself. You are very satisfied and quite sure that your opponent cannot find a way out, and it irritates you only that he keeps playing in a hopeless position. You do not keep your seat during his thinking time. You watch other games, and engage in conversation. Your opponent still does not resign. He puts more problems before you which need careful consideration. You are becoming annoyed, and your spirit is lowering. It is easy in such circumstances to lose the cool and objective judgement, and suddenly on the board instead of a win there is only a draw. You do not want a draw. You cannot admit that you were not able to exploit your clear advantage. You try to win at all costs, and lose. All this happened to me in a game against Levenfish, in 1924.



AFTER 46. P-R3

My opponent, Levenfish, has just played ..P-R3, to which I give little attention as I considered it was made for lack of something better.

47 K-B2

I intended to play 48 R/1-K6 which is not possible at once because ofQ-R8ch. The sure way to victory would have been 47. R-B5, B-N2; 48 R-R5, Q-N1; 49. R-K6ch, R-B3; and 50. Q-K8ch. But now --

47

Q-R6!

48 QxQP

A thoughtless move. Considering the game won I did not bother to consider his --

48

K-R4!

An original idea which he had in mind when he played 46...P-R3. If 49.RxB then ...RxR; 50. QxR, Q-R7ch; 51. K-N1, Q-N7ch, and stalemate. Out of spite I refused to play for a draw and was soon mated instead.

49. Q-Q6 Q-N7ch

50. K-B1 Q-Q7!

51. R-R6 R-Q1

52 QxB QxPch

53 R-K2 I could have still had stalemate with

53. K-N1, Q-K6ch; 54.RxQ, R-Q8ch; 55. K-B2, R-Q7ch

53 Q-B6ch

54 K-K1 Q-R8ch

55 K-B2 QxPch etc.



"That was the crucial move. I'll run it again in slow motion, if you want me to."

GAMES

Chess master John W. Collins annotates the Robert Walker-Olaf Ulvestad game in the Northwest Open in Chess Life for May 20th. We pass it along for the benefit of the unfortunates who do not receive Chess Life.

R. WALKER O. ULVESTAD

1. N-KB3 N-KE3 2. P-B4 P-KN3
 Alternatives are 2---, P-K3, P-Q4, P-Q3, P-B4, or P-QN5.
 3. N-QB3 B-N2 4. P-KN3 P-N3
 Preferable is 4---, P-B4; 5. B-N2, N-B3; 6. O-O, P-Q3; 7. P-Q3, O-O.
 5. B-N2 B-N2 6. O-O P-B4
 7. R-K1 ----

More along familiar lines is 7. P-Q3, 8. B-Q2 and 9. R-N1 striving for P-QN4.

7. ---- Q-B1?
 Better are 7.---, P-Q3, N-B3, or O-O.

8. P-N3 ----
 This is the Nimzowitsch Attack, a relative of the Reti Opening.

8. ---- P-Q4 9. PxB NxP
 10 B-N2 O-O

Also favorable to White is 10.---, NxN; 11. BxN, BxB; 12. PxB, O-O; 13. Q-Q2.

11 NxN BxN 12 BxB KxB
 13 P-Q4: R-Q1

If 13.---, PxB?? 14. QxPch. wins. With the text move, Black threatens 14.---, ExN; 15. BxB, RxB.

14 P-K4 B-N2 15 P-Q5 ----
 And White has a dominating center.

15 ---- Q-E2
 If 15.---, P-K3; 16. P-Q6:

16 Q-B2 N-Q2 17 Q-B3ch. K-N1
 18 QR-Q1 N-B1 19 N-K5! ----

Black's castled position was weakened by the exchange of his KB. Now a further weakness is forced by the threat of 20. N-N4 & 21. N-R6 mate.

19 ---- P-KR4 20 R-Q2 P-R4
 21 P-QR4 R-K1

Black has no play, no room to maneuver, and must sit back while White prepares the decisive break on the queen-file.

The wind-up without annotation:

22 P-B4 QR-Q1 30 B-N5! BxN
 23 R/1-Q1 B-B1 31 QxB PxB
 24 B-B1 P-B3 32 PxB RxB
 25 B-B4 R-Q3 33 PxB Q-Q1
 26 N-B3 K-N2 34 Q-N7ch.! K-R3
 27 P-K5 R/5-Q1 35 BxR QxB
 28 P-Q6 PxBP 36 Q-K7 Resigns.
 29 TxB B-N5

Another interesting game from the Northwest Open played in Portland.

HAROLD HUGHART CHARLES JOACHIM

1. P-K4 P-QB3
 2. P-Q4 P-Q4
 3. B-Q3 PxB
 4. BxP N-KB3
 5. N-QB3 NxB
 6. NxN Q-Q4
 7. P-KB3 B-B4
 8. Q-Q3 N-Q2
 9. N-K2 B-N3

Waiting for P-QB4.
 10 P-QB4? N-K4!
 A "Bobby Fisher"
 11 PxB NxQch.
 12 K-Q2 BxN
 13 PxB N-B7
 14 PxB ----

Giving up the rook hoping to regain knight later. R-B1 would have lost two pawns.

14 ---- NxR
 15 PxB R-QN1
 16 K-K1 RxB
 17 K-B1 P-K4
 18 P-QN3 PxB
 19 NxP B-B4
 20 B-N2 R-Q2
 21 R-B1 BxN
 22 R-B8ch. R-Q1

After K-K2; 23 B-R3ch., K-B3; Black saves the knight but loses a rook and a pawn.

23 RxBch. KxR

24 BxB and Black won after 30 more moves by queening a pawn.

Joachim says he just gave us the interesting and decisive part of the game. He liked the opening because it included a Max Lange idea in the Caro Cann.

MATCH "GAME"

DAN WADE OLIVER MORRIS

1. P-K4 P-K4
 2. N-KB3 N-QB3
 3. B-N5 P-QR3
 4. B-R4 P-Q3
 5. P-Q4 P-QN4
 6. B-N3 B-N5
 7. B-Q5 KN-K2
 8. BxBch. K-Q2
 9. P-Q5 N-Q5
 10 NxBch. Resigns.

Morris played better games than this in the match but the editor needed a filler for the bottom of this page.

A casual game from the Tacoma Club, making use of the Marshall Attack against the Ruy Lopez:

CARLSON

SCOTT LOCKHART

- | | |
|----------|-------|
| 1. P-K4 | P-K4 |
| 2. N-KB3 | N-QB3 |
| 3. B-N5 | P-QR3 |
| 4. B-R4 | N-B3 |
| 5. O-O | B-K2 |
| 6. R-K1 | P-QN4 |
| 7. B-N3 | O-O |
| 8. P-B3 | P-Q4 |
| 9. PxB | NxP |
| 10 NxP | NxN |
| 11 RxN | N-B3 |
| 12 Q-K2 | ---- |

Ingenious, but not good.

- | | |
|-----------|------|
| 12 ---- | B-Q3 |
| 13 R-K3 | N-N5 |
| 14 BxPch. | ---- |

The point of 12 Q-K2.

- | | |
|------------|------|
| 14 ---- | KxB |
| 15 Q-B3ch. | K-N1 |
| 16 QxR | Q-R5 |
| 17 Q-Q5ch. | K-R1 |
| 18 P-KN3?? | ---- |

Spoiling the fun. Black follows with 18 ---, QxRPch. 19 K-B1, QxP mate. White should have played:

- | | |
|---------|---------|
| 18 R-B3 | QxRPch. |
| 19 K-B1 | Q-R8ch. |
| 20 K-K2 | R-K1ch. |
| 21 K-Q3 | QxB |

Black has 2 pieces for rook and pawn with more to come. The white QNP is impossible to protect. For instance, if 22 Q-N3?? B-K3; 23 Q-B2, B-B5ch. wins queen.

Given one pawn, Wade uses it to win from Johnson in Portland's N. West Open.

DON W. JOHNSON

DAN WADE

- | | |
|-----------|-------|
| 1. P-K4 | P-QB3 |
| 2. P-Q4 | P-Q4 |
| 3. N-QB3 | PxP |
| 4. NxP | N-B3 |
| 5. NxNch. | KPxN |
| 6. N-B3 | B-N5 |
| 7. B-K2 | B-Q3 |
| 8. O-O | O-O |
| 9. R-K1 | Q-B2 |
| 10 P-KR3 | BxN |
| 11 BxB | N-Q2 |
| 12 P-B4 | QR-Q1 |
| 13 B-K3 | P-KB4 |
| 14 P-B5? | NxP |
| 15 K-R1 | N-K5 |
| 16 Q-B2 | KR-K1 |

- | | |
|-------------|---------|
| 17 QR-B1 | B-B5 |
| 18 BxN | PxB |
| 19 Q-Q2 | BxB |
| 20 RxB | Q-Q3 |
| 21 R-Q1 | Q-Q4 |
| 22 P-QN4 | P-KB4 |
| 23 R-QB3 | Q-Q3 |
| 24 P-R3 | P-B5 |
| 25 Q-R2ch. | Q-Q4 |
| 26 QxQch. | RxQ |
| 27 R-B5 | R/1-Q1 |
| 28 RxR | RxR |
| 29 K-N1 | K-B2 |
| 30 K-B1 | P-KR4 |
| 31 K-K2 | K-B3 |
| 32 P-N4 | PxP |
| 33 PxB | K-N4 |
| 34 P-B3 | PxPch. |
| 35 KxP | P-R4 |
| 36 PxB | RxRP |
| 37 R-Q3 | R-Q4 |
| 38 R-Q1 | P-KN3 |
| 39 K-K4 | R-Q2 |
| 40 K-B3 | R-K2 |
| 41 P-Q5 | R-K6ch. |
| 42 K-B2 | PxP |
| 43 RxPch. | KxP |
| 44 R-N5 | RxP |
| 45 RxP | R-R7ch. |
| 46 K-B1 | P-N4 |
| 47 R-N3 | P-B6 |
| 48 R-N5 | K-B5 |
| 49 R-N4ch. | K-N6 |
| 50 R-N1 | R-KN7 |
| 51 R-N3 | P-N5 |
| 52 R-B3 | R-N7 |
| 53 K-K1 | K-N7 |
| 54 Resigns. | |

SOLUTIONS TO THE 5-MINUTE TEST
(on page 14)

1. B-R6
2. R-N8ch
3. R-R6ch and then xB
4. B-R3

Class A players should be able to solve the first two in the time allotted, whereas experts might solve all four with ease.

In the absence of legitimate "Letters To The Editor" we present some tongue-in-cheek tom-foolery from a subscriber who wants to remain anonymous, (and alive).

LETTERS TO YE ED

Dear Sir,

I congratulate you on your fine magazine, the Washington Chess Letter. It is the best chess publication I have ever read and the only one to which I subscribe. There is only one question I have not been able to solve: is there really an EDMARS ZEMGALIS?

Since coming to this state four years ago, I have repeatedly noticed the praises MR. ZEMGALIS has received in your publication. Occasionally, games played by him appear; when he announces he may come out of his retirement this gets a big play-up; and in the Northwest Ratings his name appears ahead of the only master I have had pleasure of making the acquaintance of, MR. OLAF ULVESTAD. But although I occasionally visit Seattle to drop in on one of your big tournaments and get some personal help with my game from MR. ULVESTAD, I have yet to see MR. ZEMGALIS. Whenever I ask about him MR. ULVESTAD just smiles. I could understand his seclusion if he were an elderly gentleman like myself, but I have been told that this is not so. And - funny thing - my informants have never seen MR. ZEMGALIS in the flesh either.

Now it is a matter of common knowledge that you, MR. WADE, are an inventive cuss (don't deny it - I've seen your published games) and we both have heard of publicity stunts. My question is simply this - is there a MR. ZEMGALIS, or is he a fiction, a legend, a myth, a figment of your imagination? Everyone knows there is bad blood between you and MR. ULVESTAD. When MR. ULVESTAD fails to play in this year's Washington State Championship, you got on to your highest soap box; MR. ZEMGALIS has not played for the past four years (or possibly ever) and yet you tout him as the strongest player in the state, quoting some ridiculous score of $7\frac{1}{2} : 1\frac{1}{2}$ against MR. ULVESTAD, who, as the gentleman he is, of course refuses to comment on it. I think EDMARS ZEMGALIS, together with his nationality, just is an invention of yours to belittle MR. ULVESTAD in the eyes of us who live some distance from Seattle and do not have access to first-hand facts.

Yours,

Dear Wade;

Your address was obtained from the Seattle Chamber of Commerce. We solicit your help in bringing a community project to a successful close.

We, of the city of Chelan, are very much interested in promoting our town through such attractions as the Apple Cup which you have surely heard of. Our next project is the Apple Empire Open Chess Tournament, hold July 4th and we would much enjoy having name players from the metropolis of Seattle in attendance.

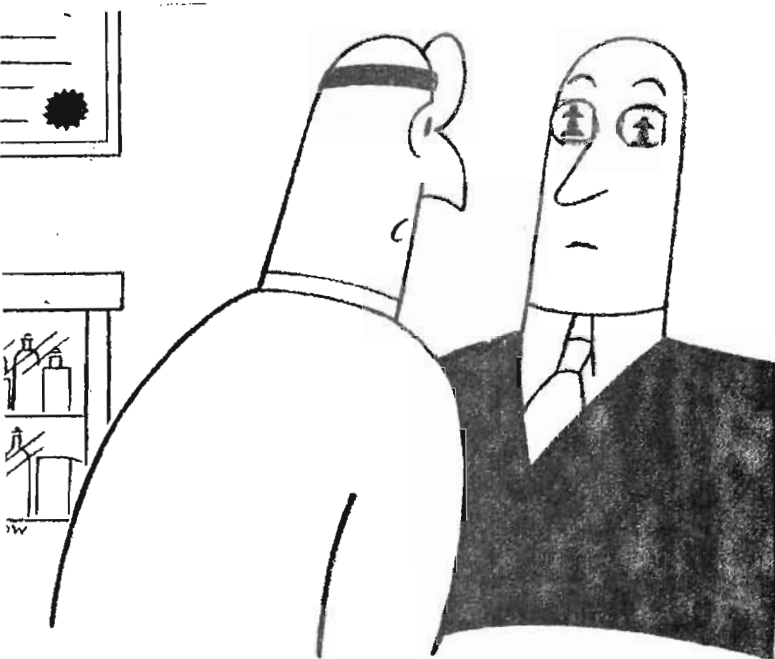
To make the chess tournament more palatable to the general population, who have a limited knowledge of the game, we have originated a novel scoring system, which, we are sure, will intrigue you.

We have been informed that the average length of a chess game is 40 moves. This span will be divided into 10 rounds of 4 moves each, as in prize fighting. Three judges - two outstanding local citizens and a third named by you - will be selected to judge and award the rounds to the player making the most progress inside the given 4 moves. At the close of the tenth round, the score cards will be tallied and the winner announced. I am sure I need not explain this procedure to you. Should the game last less than 40 moves, the winner will be credited with a K. O. (checkmate or stalemate) or a T. K. O. (resignation, or loss of substantial material force, e. g. the queen). In short order, a ladder of challengers could be set up, and all of this would be perfectly understandable to the public at large.

The local Chelan paper will give a full coverage to the events. We think we have a good idea here, and are looking forward to your bringing some of your best players down here. The winner will receive gift certificates from local merchants and a kiss from a Queen of the Knight, elected during the tournament.

Come on, all you lucky people!

Sincerely yours,



"I suggest you switch to checkers for a while."

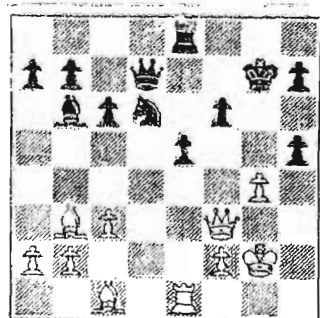


"Imagine the nerve of that guy. Just before I ran out of there he said he was going to show me a mating net."

5-MINUTE TEST

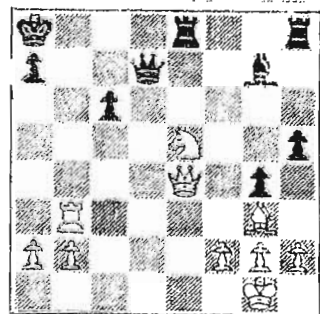
ALLOW YOURSELF 5 MINUTES TO GET AS FAR AS YOU CAN

It might not require an expert to solve the "expert" positions, but it surely will take one to get to them. Select one best move, for each, in sequence.



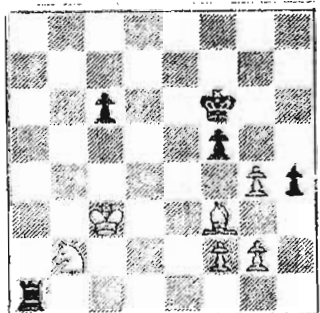
CLASS B

WHITE TO MOVE



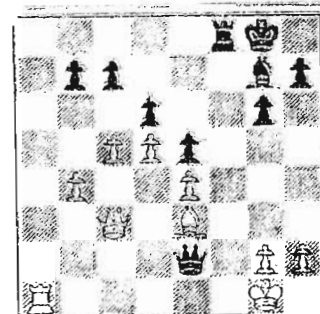
CLASS A

WHITE TO MOVE



EXPERT, JR.

BLACK TO MOVE



EXPERT, Sr.

BLACK TO MOVE

Section 57A-3A

Husby	Phillips
1. P-Q4	N-KB3
2. P-QB4	P-K3
3. N-QB3	B-N5
4. B-Q2	

Playable, but slow. More usual here is 4. P-K3 (Rubenstein) or 4. P-QR3 (Saemisch) also 4. Q-B2 (Capablanca) is strong.

4. ----	O-O
5. N-KB3	P-Q4
6. P-K3	P-QB4
7. P-QR3	BxN
8. BxB	N-K5
9. BfxP	KfxP
10. PxP	

Allowing an exchange which weakens White's Q-side pawns but White gets a powerful central position in return.

10. ----	NxB
11. PxN	Q-R4
12. Q-Q2	Q-BP/5

Best. White threatened P-B4 with advantage.

13. B-K2	N-Q2
----------	------

This move blocks his QB and the Q file. Undoubtedly a stronger move is 13.--, N-B3.

14. O-O	N-KB3
15. KR-QB1	N-K5

Black must have counted on this move for some initiative, but now White dominates the center with his next two moves.

16. Q-Q4 !	P-QN3
17. P-B4	

Rapidly opening the center files and practically forcing a favorable end game.

17. ----	B-N2
18. PxP	QxQ
19. NxQ	BxP
20. P-B3	N-B4
21. P-K4	B-N2
22. B-B4	P-QR3

Beginning a losing plan. He

should place his rooks on the open files as soon as possible.

23. N-KB5

Preventing Black from playing QR-B1 followed by P-QN4.

23. ---	P-KN3
24. N-K3	R-R2

A positional blunder. Best was still QR-B1, when White could play N-Q5 forcing the exchange of Black's QB. A possible forced variation might run as follows:

24. ----, QR-B1	25. N-Q5, BxN
26. BxB, N-Q6,	27. RxR, RxR
28. B-N7.	This end game favors the B over the N, as

there is much work to do over wide areas and the above variation denies Black useful counter-play. Eventually White will centralize his K, hold Black's Q side pawns in restraint and start a general advance of his own pawns which will not only cramp Black but open new lines to White's advantage.

25. R-Q1	P-QN4
----------	-------

Weakens his N, which is an important block guard on the QB file.

26. B-R2	K-R1
----------	------

A fatal omission. There was some fight in 26. --, KR-B1.

27. QR-B1	
-----------	--

Now Black cannot prevent the White R's from doubling on the 7th rank.

27. ----	N-K3
28. BxN	PxB
29. R-B7	resigns.

Section 57B-10B

Benoit	Bennett
1. P-K4	N-KB3
2. N-QB3	P-Q4
3. P-K5	N-N5

The N is not well placed here.

The well known variation 3.--- P-Q5. 4. PxN, PxN 5. PxNP, Pxp ch. 6. Bxp, Bxp is good for Black.

4. P-Q4	N-QB3
---------	-------

Black should play 4.--, P-KN3

5. B-K2, N-R3	
---------------	--

5. B-KB4	
----------	--

Misses an opportunity, e.g. 5. B-K2, N-R3. 6. BxN would seriously weaken Black's K-side pawn structure.

5. ----	P-K3
---------	------

An oversight, 5.--, P-KN3 was still in order.

6. QxN	NxQP
--------	------

7. B-Q3	P-QB4
---------	-------

8. KN-K2	P-B5
----------	------

When material behind, one should exchange pawns, but not pieces. 8. --, N-B3 prevents a piece exchange and threatens 9.----, P-B5, which would win a B. The move made, indirectly trades a N for a B and also yields White a P profit.

9. NxN	PxB
--------	-----

10. PxP	B-B4
---------	------

Another oversight. A player should strive to observe his own weaknesses before threatening his opponent. All points already under pressure require constant attention to avoid giving the opponent the more damaging threat or capture.

11. QxKNP	K-K2
-----------	------

A blunder, allowing the "Skewer" which is a very deadly double attack in a single direction.

12. B-N5 ch	K-Q2
-------------	------

13. BxQ	RxB
---------	-----

14. Q-KBP ch	B-K2
--------------	------

15. NxKP	R-K1
----------	------

16. NxQP	P-N3
----------	------

17. N-KB6 ch	K-B3
--------------	------

18. QxR ch	K-N2
------------	------

19. QxB/7 ch	resigns.
--------------	----------

A number of our local up and coming chess players have in recent months made great improvement in their chess ability by spending a few hours in taking chess lessons at the Seattle Chess Center from Chess Master Olaf Ulvestad. His fee for a course of lessons is modest and the results are very rewarding in improving your game. Take a few lessons and learn how to clobber that player who has been clobbering you.
 SEATTLE CHESS CENTER, 718 Pine Street, Seattle 1, Washington.

POSTAL CHESS

Director, R. R. Merk
1026 E 71 Street
Seattle 15, Wash.

Postal games completed to May 29, 1958						Points
4/7/58	58A-1A	Weaver	1	Bever	0	40
4/28/58	57A-4A	Carter	1	Husby	0	64
5/2/58	57B-9A	Benson	$\frac{1}{2}$	Fredstrom	$\frac{1}{2}$	26
5/7/58	57B-5A	Eilmes	1	Blums	0	38
	57B-5A	Scripps	1	Blums	0	32
	57B-5B	Eilmes	1	Blums	0	38
	57B-5B	Scripps	1	Blums	0	32
	57B-4A	Skoglund	1	Cooper	0	40
5/8/58	57A-4A	Spatz	1	Husby	0	28
	57A-4B	Spatz	1	Husby	0	28
	57B-10B	Merk	1	Van Natta	0	55
	57A-4A	Howard	1	Spatz	0	52
5/10/58	56B-11A	Spatz	1	Lyberger	0	22
	57B-8A	Abrahamson	1	Raleigh	0	34
5/12/58	58A-1B	Weaver	1	Bever	0	32
5/15/58	57A-5B	Cairncross	1	Carter	0	32
	57B-3B	Van Natta	$\frac{1}{2}$	Gemar	$\frac{1}{2}$	20
5/16/58	57B-6B	Mills	1	Kuvara	0	28
5/19/58	57A-6B	Coubrough	1	Bever	0	26
	57B-9B	Roberts, D.	1	Litke	0	24
	57A-4B	Spatz	1	Howard	0	56
5/20/58	57B-6A	Gemar	1	Hall	0	16
	57B-7A	Gemar	1	Hall	0	16
	57B-7B	Gemar	1	Hall	0	16
5/22/58	58A-2A	Phillips	1	Laine	0	36
	57A-4A	Husby	$\frac{1}{2}$	Howard	$\frac{1}{2}$	30
	57A-4B	Howard	$\frac{1}{2}$	Husby	$\frac{1}{2}$	30
	57B-8A	Kuvara	1	Raleigh	0	34
	57B-8B	Kuvara	1	Raleigh	0	34
5/26/58	58A-1A	Vellias	1	Bever	0	60
5/27/58	57B-3A	Van Natta	1	Rogers	0	30
	57B-3B	Van Natta	1	Rogers	0	30
5/29/58	57B-10A	Gifford	1	Miller	0	50
	57B-10B	Gifford	1	Miller	0	50
	57B-10A	Lyberger	1	Miller	0	24
	57B-10B	Lyberger	1	Miller	0	24

	57B-3A	57B-3B	Pts.	
Smith	x 1 1 1 1	x 1 1 1 0	7	Smith wins first place in this tournament with 7 points to his credit. He chose as his prize an entry in a new postal chess section and two sets of postal chess recorders.
Van Natta	0 x 1 1 1	0 x $\frac{1}{2}$ 1 1	$5\frac{1}{2}$	
Gemar	0 0 x 1 1	1 $\frac{1}{2}$ x 1 1	$5\frac{1}{2}$	
Rogers	0 0 0 x 1	0 0 0 x 1	2	
Gordon	0 0 0 0 x	0 0 0 0 x	0	

We welcome two of our former postal players, who have returned to our postal chess tournaments after an absence, W. P. Allen of Bremerton had to give up his postal games because of illness. He has now recovered so that he can again play in our postal games. He was one of the first postal players that the Washington Chess Federation had. Our record shows him as starting Feb. 6, 1949. Also coming back after an absence of several months because of moving around in the military service is Dick Parsons. He is ready to take on all comers and was started in two sections this past month. We expect that he will start a steady climb to near the top of the "A" Division but Wade says "not if he can help it". Two new players in our postal tournaments are Elsie Dart and L. E. Lydic who we hope to have started in a new section shortly.

A good way to improve your chess skill - is to PLAY BY MAIL

YOU HAVE AMPLE TIME TO REFER TO BOOKS ON THE OPENINGS, TO REFER TO SIMILAR SITUATIONS IN PUBLISHED GAMES, AND TO TRY VARIOUS MOVES ON THE BOARD. THE RESULT IS ADDED FINESSE THAT IS IMPRESSED IN YOUR MEMORY.

The entry fee is 50¢. Rules are sent, and PRIZES!

SEND ENTRY TO R.R.MERK 1026 E. 71, SEATTLE 15,

POSTAL CHESS RATINGS

"A" Division		"B" Division	
Weischer	1802	Benson	1356
Wade	1771	Spencer	1359
Coubrough	1721	Merk	1314
Woodward	1708	Kuvara	1312
Spatz	1697	Abrahamson	1306
Weaver	1695	McDonald	1252
Mage	1693	Skoglund	1201
Skarsten	1692	Youngwan	1156
Phillips	1641	Bowerman	1155
Cairnross	1614	Gifford	1150
Kaffenberger	1608	Nichols	1149
Howard	1602	Fredstrom	1142
Mills	1529	Lee	1140
Gemar	1488	Watson	1136
Scripps	1481	Benoit	1110
Knapp	1472	Litke	1096
Lutere	1472	Blums	1096
Roberts, H.H.	1460	Bennett	1093
Eilmes	1438	Guevara	1074
Laine	1434	Allen	1050
Smith	1419	Adkisson	1050
Roberts, D.	1406	Bothun	1050
Husby	1413	Chapman	1050
Parsons	1400	Dart, Ken	1050
Vollias	1376	Dart, Elsie	1050
Bever	1367	King	1050
Carter	1366	Koenkow	1050
Lyberger	1362	Kunkle	1050
Van Natta	1329	Lydic	1050
		McCord, D.R.	1050
		McCord, R.S.	1050
		Munselle	1050
		Murray	1050
		Pifley	1050
		Quass	1050
		Robertson	1050
		Sale	1050
		Sawyer	1050
		Tuggle	1050
		Warren	1050
		Hall	1046
		Raleigh	1015
		Cooper	1012
		Rogers	1006
		Devenere	876

WASHINGTON CHESS LETTER
1026 E. 71, SEATTLE 15.

Return postage guaranteed
Form 3547 requested

B. E. Strachan
5103 N.W. 15 Ave
Portland 11, Ore
4/59

WASH. (12) SEATTLE, WASH. (112) SEATTLE, WA

