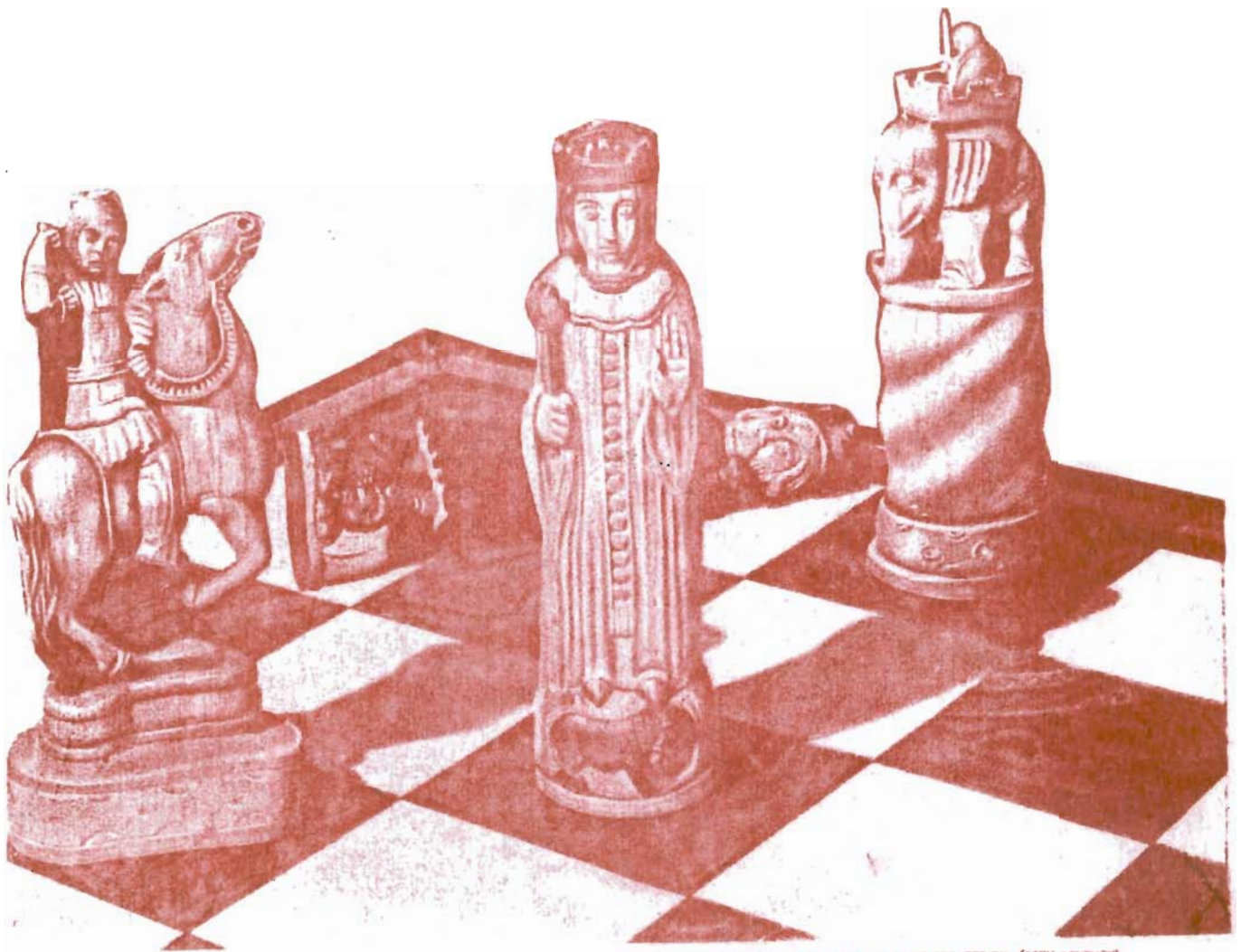


WASHINGTON

# CHESS

Sept. 1957

LETTER



FRENCH CHESSMEN FROM THE HERMAN STIMPER COLLECTION... (13TH CENTURY)

## TENTH ANNIVERSARY NEXT!

Next issue will be our tenth anniversary number marking up ten years of publication. Since May and June, 1952 issues were combined, our 119th and not 120th issue will be the anniversary one.

## THIS MONTH'S HELPERS

Besides R. R. MERK, HOWARD WEAVER, and DAN WADE, we have help this number from DICK VAIDENBURG, GEORGE BISHOP and NEAL KING. Also, we are hoping a page on junior chess is coming from JOHNATHON SCHROEDEL. Letters and games came from CHAS. JOACHIM, MAX BADER, and several others. SFC ROBERT KARCH sent us the N. W. Rating List completely up to date including the Seafair! We are too exhausted to do more this month and we want the ratings for our anniversary.

## SPOKANE CLUB LADDER, 1956-57

Cornelius	1186	G. Lulham	742
Voget	1076	Amdahl	706
Kittredge	1046	Priebe	674
Daniels	986	Hay	650
Kromer	978	Schneider	626
Dr. Parker	908	Stenerson	594
Hartman	908	Jaensch	562
Morgan	888	Rice	500
Conway	822	M. Lulham	500
Hill	776	Denvenere	416
Rose	754	Ingersoll	402

Sent in by Spokane C. C. statistician Mike Conway.

## BILLS IN ICELAND

BILL BILLS, former Wash. State & Seattle Seafair Champion, has gone to Iceland according to an item in a Houston, Texas newspaper. Bills is currently Houston's top-ranked chess player.

When asked whether he would like to be transferred to Iceland by the company he works for, Bills was only interested in the chess colony there. Iceland has 148,000 inhabitants and five times as many chess players as Houston, including one international master.

Bills is planning to return to Houston in seven weeks to finish his games in the city tournament.

( Sent in by George Bishop )

# WASHINGTON CHESS LETTER

OFFICIAL PUBLICATION OF  
**Washington Chess Federation**

**EDITOR**

D. E. WADE 11023 25th N. E. SEATTLE 55

**PUBLISHER**

F. H. WEAVER 501 OLYMPIC PL. SEATTLE 99

**CIRCULATION**

R. R. MERK 1026 E. 71st SEATTLE 15

MEMBERSHIP DUES, \$2.00 A YEAR, INCLUDES SUBSCRIPTION (12 ISSUES). SEND MONEY TO W. H. RALEIGH, TREASURER, 4312 WOODLAND PARK AVENUE, SEATTLE 3, WASH.

**AFFILIATED W. C. F. CHESS CLUBS**

Seattle Spokane Tacoma Olympia West Seattle,  
Kitsap Tri-Cities Boeings McNeil

## MATCH RESULTS

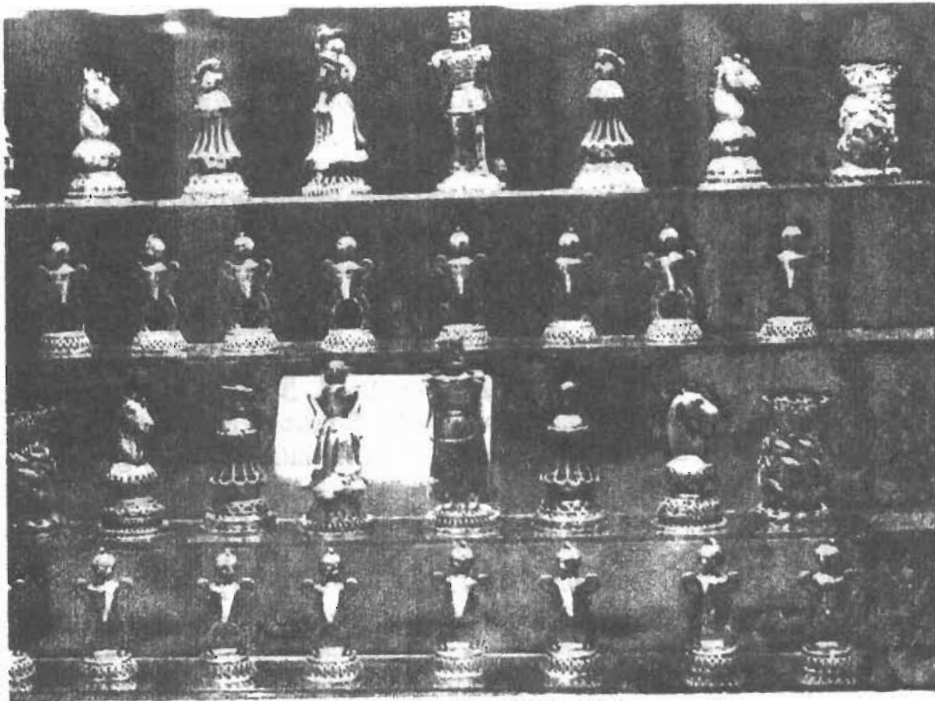
ELOD MACSKA 'SY, who eked out a win over the editor in the recently held International on second board, proved he should have played on 1st board when he downed B. C. Champion WALTER JURSEVSKIS in a five contest match. Games were played at Vancouver's City Chess Club and resulted in a final score of  $3\frac{1}{2}$  to  $1\frac{1}{2}$ .

Washington State Chess Champion ROBERT EDBERG continues to lose at chess! Ever since he won the state crown he has had a signal lack of success. His latest reverses are in his 10 game match with VIKTORS PUPOLS. The last time we heard, Viktors was leading  $3\frac{1}{2}$  to  $1\frac{1}{2}$ .

Speaking of chess matches, two middling fair woodpushers are set to go at it again. World chess champion VASILY SMYSLOV has agreed to a return match with MIKHAIL BOTVINNIK for the world title starting March 4 in Moscow.

SEND \$2 TO W. H. RALEIGH, 4312 WOODLAND PARK AVE., SEATTLE, FOR A YEAR'S SUBSCRIPTION

## A DISPLAY OF ANCIENT AND RARE CHESS PIECES



Maryhill Museum of Fine Arts is having 300 visitors each weekday and over 500 on weekend days, many of them attracted by the exhibit of world famous chess sets.

Upper left is a set of pure gold filigree obtained in 1945 by John Pogzeba, the renowned collector, from a refugee in Paris. Pogzeba was preparing to snip his luxurious Mercedes-Benz automobile home when he saw the set. He traded even, for the car.

Upper right is an Egyptian game piece believed to be from an early form of chess set. Its age is estimated to be 3,800 or more years.

The lower figure is the only piece left from a 16th century palmwood set carved by Adriaan van der Werff.

Maryhill Museum has a commanding site on the Columbia River, 100 miles East of Portland. The chess exhibit is but a small part of the many art treasures, historical documents, and legendary objects that are exhibited this season by WCF member Cliff Dolph, curator of the museum that was endowed by the great railroad builder Sam Hill.

The showing will continue to Sept. 22, and is worth an extra detour or journey.

# MCCORMICK AND SEAFAIR

VIKTORS PUPOLS and JIM MCCORMICK both won the 1957 Seafair Open! Contrary to the first hasty and erroneous calculations by the figure-filberts that sent everyone home believing McCormick had won the tourney all by his lonesome, later figures put them into a tie for first leaving them co-champions. The adjusted scores had not been figured and McCormick was credited with 9 Median tie breaking points to Pupol's  $8\frac{1}{2}$ . But STAN SAWYER, a second round victim of Pupols, forfeited his third round game to GELL, making Sawyer's adjusted score 2 instead of  $1\frac{1}{2}$ . Also FRANK CURTIS, who pulled a disappearing act after being dismantled by Vic in the opening round, forfeited 4 games. At  $\frac{1}{2}$  point per game this is an adjusted score of 2 although Curtis had a tournament score of 0. Since one low score and one top score are dropped, the three middle scores make up the Median & Pupols had Sawyer or Curtis (2), Joachim (4) and Griffiths (3) or a total of nine which was the same as McCormick. Strangely enough, only the tie for first remained unbroken. All other ties in the 28-player event were broken by the Median.

Two years ago in the Seattle Seafair hydroplane race, about a half million people left Lake Washington believing a Seattle boat had won the Gold Cup. An hour or so later they discovered they had watched a Detroit boat win the race! So not knowing who won is nothing new at Seattle's Seafair!

Also the Seafair people insisted on publicising the tourney for the weekend following the tournament's actual date! So a lot of players showed up a week end late wanting to play in the Seafair Open Chess Tournament! As it was, the total of 28 players was the second largest in Seattle chess history being topped only by the 37-player total in the 1951 Washington Open.

As predicted, Seattle players turned out well, 16 in all entering. South western Washington and the Portland area made the tourney a real success by enter-

six Portland club players in DON W. JOHNSON, ROBERT WALKER, JAMES MCNEESE, DONALD HAFFNER, WAYNE BAUER and DUANE MEADOR. Two of these, Bauer and Meador, live outside Portland but are connected with that club. From Southwestern Washington came CHARLES JOACHIM of the Olympia Club, RAIMUNDS (of Longview) BLUMS, IR. A. A. MURRAY (Raymond), totaling nine from the S.W. Washington-Portland, Oregon area. The other three players were PAUL BEZEMER of Meta-line (now living in Seattle), TERRY NELSON of Yakima and EARL KNAPP of Gig Harbor.

CHARLES JOACHIM, former Seattleite, and present Olympia kingpin, took third with 4-1, losing only to Pupols in a 3rd round crucial. VIESTURS SEGLINS, strong Latvian newcomer, drew his first two and won his last three to also post a 4-1 score and take fourth place.

Contrary to first released results, TERRY NELSON of Yakima took fifth place and not DAN WADE. Wade took sixth. Both scored  $3\frac{1}{2}-1\frac{1}{2}$ . Nelson was the fourth undefeated player in the tournament with two wins and three draws.

Prizes exceeded the guarantee of 25 dollars for first. Both winners each received 30 dollars. Third prize was \$ 10 and fourth \$6.50. As both Joachim's and Seglin's scores were the same, they each received \$8.25. GEORGE BISHOP donated a book prize, "Basic Chess Endings" for the top class B junior player. Tourney Director TOM MAKENS (who did an excellent & trying job) donated the book to DON HAFFNER who was the highest scoring junior in actual games played not counting forfeits or byes.

It was ideal weather for chess with a drizzling rain coming down. While outside the Seafair parade marched thru the rain, chess players inside watched it go by in between moves against first round opponents.

Saturday's play ended with only Pupols, McCormick and CHARLES GRIFFITHS un-



# PUPOLS WIN BIG OPEN

story by Wade

beaten and untied with 3-0 scores. However State Junior and State Speed champion Griffiths stopped right there being unable to score on Sunday while McCormick and Pupols moved on to the title.

Pupols had an easy time, winning in 13 moves against Curtis, and topping the two Charles, Joachim and Griffiths both in about 20 moves. His last game was a 14 move "Grandmaster draw" against McCormick. Pupol's only "long" game was a 35 move decision over Stan Sawyer. Only in his game against Griffiths did he get in to trouble. Vic sacked a bishop in that one soundly enough and would have won if he hadn't blundered in the "grand manner". However, a swindle worked and Pupols won anyway.

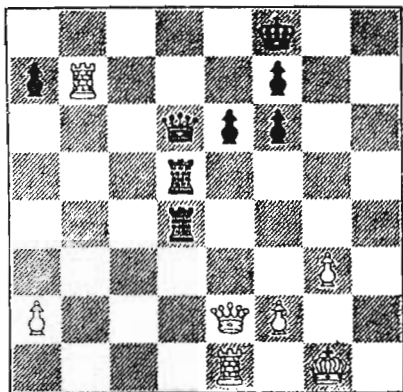
McCormick downed RAIMUNDS BLUMS, a strong Latvian from Longview, beat DON EILMES, won over DON W. JOHNSON who has played in numerous tournaments before moving to Portland, and finally defeated DR. A. A. MURRAY - a formidable quartet. In the finale, Pupols gave the tourney to McCormick because he didn't feel up to the task of a hard game. Why risk \$ 30 in hand for \$40 in the bush? Then Pupol's jinx asserted itself again and we find out that Pupols cannot even give McCormick a tournament!

NOTES: Robert Walker finished 9 th in the 33 player U. S. Junior scoring  $5\frac{1}{2}$  -  $3\frac{1}{2}$ ....Duane Meador always finished high before but only 19th this time....Some of the best games weren't turned in.

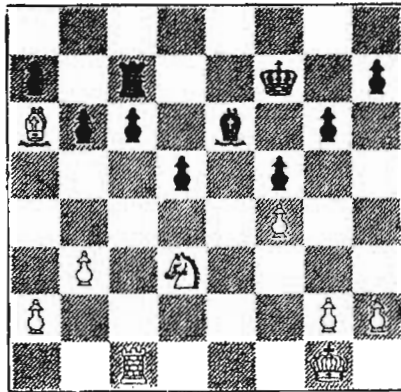
SEATTLE SEAFAIR OPEN, AUG. 3-4, 1957										
PLACE	NAME	CITY	-1-	-2-	-3-	-4-	-5-	W L D	SCORE	MEDIAN
1.	Viktors Pupols,	Seattle	W-28	W-24	W-3	W-8	D-2	4-0-1	$4\frac{1}{2}$ - $\frac{1}{2}$	9.0
2.	Jim McCormick,	Seattle	W-9	W-10	W-7	W-13	D-1	4-0-1	$4\frac{1}{2}$ - $\frac{1}{2}$	9.0
3.	Charles Joachim,	Olympia	W-27	W-20	L-1	W-9	W-8	4-1-0	4 - 1	7.5
4.	Viesturs Seglins,	Seattle	D-18	D-5	W-22	W-17	W-15	3-0-2	4 - 1	7.0
5.	Terry Nelson,	Yakima	W-22	D-4	W-19	D-10	D-7	2-0-3	$3\frac{1}{2}$ - $1\frac{1}{2}$	8.0
6.	Daniel E. Wade,	Seattle	W-14	W-19	L-8	D-7	W-16	3-1-1	$3\frac{1}{2}$ - $1\frac{1}{2}$	7.5
7.	Don W. Johnson,	Portland	W-17	W-13	L2	D-6	D-5	2-1-2	3 - 2	9.5
8.	Charles Griffiths,	Seattle	W-23	W-27	W-6	L-1	L-3	3-2-0	3 - 2	9.0
9.	Raimunds Blums,	Longview	L-2	W-12	W-25	L-3	W-18	3-2-0	3 - 2	8.5
10	Donald Eilmes,	Seattle	W-26	L-2	W-18	D-5	D-13	2-1-2	3 - 2	8.0
11	Howard Weaver,	Seattle	D-15	D-18	L-14	W-24	W-22	2-1-2	3 - 2	6.0
12	James McNeese,	Portland	L-19	L-9	WF27	W-25	W-20	3-2-0	3 - 2	5.0
13	Dr. A.A. Murray,	Raymond	W-16	L-7	W-23	L-2	D-10	2-2-1	$2\frac{1}{2}$ - $2\frac{1}{2}$	8.5
14	Wayne Bauer,	Gladstone,Ore.	L-6	D-17	W-11	L-16	WF26	2-2-1	$2\frac{1}{2}$ - $2\frac{1}{2}$	8.0
15	Robert Walker,	Portland	D-11	D-22	D-16	W-19	L-4	1-1-3	$2\frac{1}{2}$ - $2\frac{1}{2}$	7.5
16	Earl Knapp,	Gig Harbor	L-13	W-21	D-15	W-14	L-6	2-2-1	$2\frac{1}{2}$ - $2\frac{1}{2}$	7.0
17	Fred M. Howard,	Seattle	L-7	D-14	W-26	L-4	W-25	2-2-1	$2\frac{1}{2}$ - $2\frac{1}{2}$	6.0
18	Donald Haffner,	Portland	D-4	D-11	L-10	W-23	L-9	1-2-2	2 - 3	9.0
19	Duane Meador,	Vancouver,Wn.	W-12	L-6	L-5	L-15	W-21	2-3-0	2 - 3	8.5
20	John Gell,	Seattle	W-25	L-3	WF24	L-22	L-12	2-3-0	2 - 3	6.0
21	Lewis Stansby,	Seattle	L-24	L-16	Bye	WF27	L-19	2-3-0	2 - 3	5.5
22	Martin Fass,	Seattle	L-5	D-15	L-4	W-20	L-11	1-3-1	$1\frac{1}{2}$ - $3\frac{1}{2}$	9.0
23	Oliver S. Morris,	Seattle	L-8	WF28	L-13	L-18	D-24	1-3-1	$1\frac{1}{2}$ - $3\frac{1}{2}$	6.5
24	Stan Sawyer,	Seattle	W-21	L-1	LF20	L-11	D-23	1-3-1	$1\frac{1}{2}$ - $3\frac{1}{2}$	5.5
25	Thomas Makens,	Seattle	L-20	W-26	L-9	L-12	L-17	1-4-0	1 - 4	6.5
26	Paul Bezemer,	Metaline	L-10	L-25	L-17	Bye	LF14	1-4-0	1 - 4	5.5
27	Dale Bjornsen,	Seattle	L-3	L-8	LF12	LF21	----	0-5-0	0 - 5	6.5
28	Frank Curtis,	Seattle	L-1	LF23	----	----	----	0-5-0	0 - 5	0.0

MORE NOTES: Some of the boys cut expenses while on the "tournament trail". Cans of beans and bread and peanut butter making a meal for some on Saturday evening. D.W.

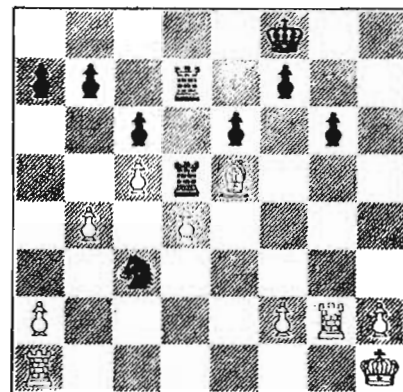
# SEATTLE HAS WON 2, AMSTERDAM 1



WHITE G. FIKKE  
BLACK DAN WADE  
After.....R/KR5 X QP



WHITE BEN WEISSCHER  
BLACK K. VOGEL  
After N/N2-Q3



van KALKEN — WEAVER  
after .....K-B1

Continuing from the positions pictured, the following moves have been made in a 10-game postal match between 5-man teams of Amsterdam and Seattle which started in July, 1956.

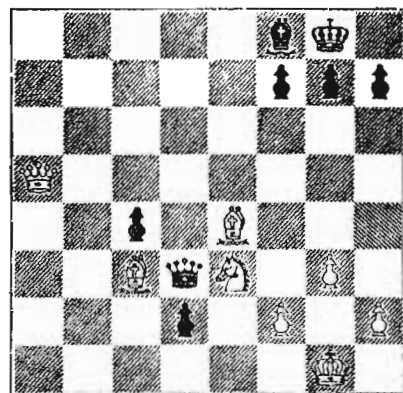
BOARD ONE -- G. Fikke resigned in a game not pictured, offered a draw in the above position, and Dan Wade accepted.

BOARD TWO -- Seattle's Max Bader won both .

BOARD THREE - Weisscher unhappily translated a Dutch "B" for pawn, as B for Bishop, and lost one. The above game continued 27. ...K-K2; 28. N-K5.

BOARD FOUR - Continued with 32. P-B4, N-N4.

BOARD FIVE - Continued with 31. ..QxB; 32. BxP.



BEVER — ROOS  
after 31.BxN

THE SCORE NOW STANDS -- SEATTLE 3½ -- AMSTERDAM 1½

Ch. H.C. van Kalken, the Amsterdam team captain, has forwarded the July issue of Tarrasch Nieuws, which has a bilingual report in side-by-side columns.

## PRAATSTOEL:

Aan de strijd tegen onze Amerikaanse tegenstanders is in diverse partijen te zien, dat er tenening in komt. Hoewel het er in het begin naar uitzag, dat wij een flinke overwinning tegemoet konden zien, is uit het verdere verloop gebleken dat onze vrienden aan de andere kant van de haringvliet, het er niet bij lieten zitten. Zij herstelden zich uit verschillende swakke openingen. De opening schijnt wel de zwakke kant te zijn, welke door onze spelers niet, of onvoldoende is uitgebuit. Slechts twee partyen van de tien zijn tot een eind gekomen en wel een tussen J. Muller (Tarrasch) en Max Bader (Seattle) gewonnen door Bader en een tussen B.A. Weisscher en ons lid K.W.H. Vogel, welke Vogel won.

\*\*\*\*\*

## VOORZITTER AAN HET WOORD

In several games of the chess with our American opponents the situation is clearing up a bit. Though in the beginning it looked like as if we might expect a nice victory, it soon became clear that our friends on the other side of the world would not give in so easily.

They recovered gradually from various rather weak openings. The opening seems to be a rather weak spot in our opponents' armour and this fact has obviously not been exploited enough by our players. Only 2 games out of 10 have come to an end, viz. 1 game between J. Muller (Tarrasch) and Max Bader (Seattle) which Mr. Bader won and 1 game between B.A. Weisscher and our K.W.H. Vogel, won by Mr. Vogel.

\*\*\*\*\*

(Chess Letter can now claim to be the only bilingual chess monthly in the N.W.)

# CHESS AROUND THE WORLD

## CLEVELAND, OHIO

Bobby (Robert James) Fischer, 14-year-old high school student from Brooklyn, won the U.S. Open Chess Championship, with a score of 10-2, tie-breaking points placing him over Arthur Bisguier, the U.S. Champion.

Fischer, twice winner of the U.S. Junior, had been tied with Don Byrne of Ann Arbor, Mich. just before starting the final round. Each had a score of 9½-1½, but Fischer had already beaten Byrne, who was therefore matched with Bisguier, 9-2, in a crucial last game. Bisguier won, which dropped Byrne to third, while young Fischer drew with Walter Shipman, who finished with 9-3 in a quadruple tie with Robert Byrne, Don's brother, Ed Mednis and Anthony Santasiere. Tied at 8½-3½ were Paul Brandts, Anthony Saidy and J. Theodorovitch (Toronto). Scores of 8-4 were compiled by W. G. Addison of San Francisco, Atillio Di Camillo, Hans Berliner, Orest Popovych, M. Siegel, and Gerald Fielding. Following this group were Jack Collins, Victor Guala and Dr. Marchand.

## SOFIA, BULGARIA

The Zonal Tournament for Eastern Europe was won by Dr. Filip, Czechoslovakian master, with a score of 9½-4½. Tied with 8½-5½ were Matanovic of Yugoslavia, Sliva of Poland and Neikirch of Bulgaria. Since only three players can qualify from any one section for the Interzonal Tournament to be held next year, the players who are tied will have to play an elimination event.

## CALIFORNIA

The 1957 California Open Chess Championship will be played over the Labor Day week end at Monterey. Sgt Robert Karch is in charge of reservations and registration.

The 1957 U.S. Women's Championship Tournament will be held Nov. 3-16 at Los Angeles. Invitations are being sent to the 12 leading women players, in accordance with the rating list of the U.S. Chess Federation.

## NEW YORK

Samuel Reshevsky, victorious in match play against U.S. Champion Bisguier, has started a 10-game match with Donald Byrne. The first game resulted in a draw after a time scramble in which both flags fell. Referee Hans Kmoch awarded the game to Byrne but Reshevsky appealed to the tournament committee, which ruled that in view of the unusual circumstances the game should be considered drawn. The second game also became inaccurate through time pressure. Reshevsky had steadily gained material to reach an end game advantage of Queen against Rook but lacked time to insure the win, and accepted a draw.

## DALLAS, TEXAS

A group in Dallas, Texas, is making plans to stage an international chess tournament in November with 12 of the leading players of the world meeting in a double round robin event. Invitations have been sent to World Champion Vassily Smyslov of Russia, former champion Dr. Max Euwe of Holland, Samuel Reshevsky of the United States, and the national champions of other European and American countries. The prize fund goal is \$15,000, according to C.F. Tears, director of Dallas International Chess Tournaments Inc., the sponsor.

## PLAINVIEW, TEXAS

George Bishop of Seattle scored 4-1, and tie-breaking points placed him third in the Panhandle Open, held August 24 and 25. Missouri Champion J.V. Ragan, of St. Louis was first. The tournament was directed by Geo. Koltanowski.

## REYKJAVIK, ICELAND

The final team standing of the international students tournament:

Russia	43½	Iceland	27
Bulgaria	36	England	23½
Czechoslovakia	36	Denmark	18
Hungary	34½	Sweden	16
United States	31	Ecuador	12½
Rumania	28	Mongolia	14½
E. Germany	28	Finland	9½

-continued next page

The Canadian chess championship for 1957 will be determined by a 10-man round robin tournament at the Hotel Vancouver, beginning Aug. 23, and continuing until Aug. 31.

Frank R. Anderson, defending champion, and rated as an international master, has arrived from Toronto to compete with experts from all across Canada, including Lionel B. Joyner, Montreal champion, Geza Fuster, of Toronto, Paul Vaitonis, of Hamilton, and Walter Jursevskis, of Burnaby.

British Columbia chess enthusiasts have raised a fund of over \$1,200 for the event.

Anderson started playing chess when he was 10, but didn't study seriously until he was stricken with arthritis seven years later. Since then he has thoroughly studied and mastered 130 chess books and almost all the chess magazine games. He has played over on his study boards an estimated 30,000 games.

Elod Macskasy, brilliant newcomer to Vancouver, B.C., chess, although not eligible to play in the tournament, is scheduled to play a two-game match with Frank Anderson. The match will take place at the City Chess Club, 833 Hornby, at 7 p.m., Sept. 1, and at the Vancouver Chess Club, 1173 West Broadway, at 2 p.m. Sept. 2.

#### WORLD JUNIOR CHAMPIONSHIP

William Lombardy, of New York, scored a perfect 11-0 to win the 1957 World Junior Championship, held at Toronto, Canada. M. Gerusel, of West Germany, was second with 9-2; A.K. Jongsma, of Holland, was third, and V. Selimanov, USSR, placed fourth with 8-3. Other high scores were: R. Cardoso, Philippines; R. Hallerod, Sweden; and Francois Jobin, Canada.



PLAY CHESS BY MAIL  
IMPROVE YOUR SKILL!  
**competition makes it better!**

*John Campbell*



# LETTERS TO YE ED

ROBERT A. KARCH, 987 Franklin St., Monterey, California writes - "Dear Dan, I just received the August issue. You are doing a wonderful job to get out a full issue, month by month, all year round!

As you correctly predicted, ULVESTAD has been restored to Master (2202) and PUPOLS dropped slightly to High Expert (2159). In the future, Masters and Experts are to hold their place (with a tentative rating, keyed by double zero) for a full quarter past a slump - to allow time to recover form. However, the actual rating and not the temporary one will be used to compute match and tournament performance with other players.

I goofed! Obviously, the state champ is an expert. See forthcoming list.

Weaver asked me not to count the performance of MAKENS in the Seafair. Will do, though it is not the blessing it may appear to be. After the Inland Empire (1856), Tom has dropped to 1734 due to a 1-4 score in the Seattle Club Championship tourney. He seems to be in a bad slump....like me down here!

The next quarterly rating list is due in the October issue. I expect to be able to meet the schedule. However, if you can send me an advance copy of the Seafair results we can announce current Masters and Experts and, if desirable and time permits, the entire list in the September issue."

CHARLES JOACHIM, Hotel Olympian, Olympia, writes - "Olympia won against Tacoma  $5\frac{1}{2}-\frac{1}{2}$ . Luckily for us, Pupols, Holmes, Hewitt etc. did not play. WALT CONNER was very disappointed when he was not accepted in the U. S. Junior. The committee had lowered the age limit and poor Walt, prematurely aged by his beard, had to return home without a chance to play. This was really a shame.

Conner and I played two matches. The first one I won  $3\frac{1}{2}-1\frac{1}{2}$ . In the second one, Conner is ahead 5-3 so that I can only tie the second match if I win the remaining 2 games."

OLYMPIA C. C.	5 $\frac{1}{2}$	TACOMA C. C.	$\frac{1}{2}$
Conner	1	Carlson	0
Joachim	1	Carlson	0
Tveden	$\frac{1}{2}$	Frank	$\frac{1}{2}$
Parmelee	1	Gunn	0
Stymans	1	Gunn	0
Dr. McInnis	1	Frank	0

Only 3 competed for Tacoma.

The ladder of the Olympia C. C. has had a few changes: C. Harmeson 1720, W. Conner 1718, C. Joachim 1716, E. Tveden 1710, H. Parmelee 1699, E. Ayer 1698, P. Stymans 1694, R. Pawley 1694, J. MacKenzie 1694, Col. Gurfein 1694, Dr. McInnis 1680 and Albert Gurfein 1638 are leading in mid-August. Another newcomer is Lt. Edelstein with a ladder rating of 1504.

DENNIS HAMILTON, National Park Inn Longmire, Wash. writes - "Well, it was surprising to hear about the Seafair from Loughheed. Old Jumpin' Jim is back for a while in shape I see. Maybe he'll do it again at the Tacoma O'. Loughheed is in charge of that little fiasco and I hope it goes over well.

The promotional angle of the TO is well underway. All that needs to be done now is send directions to all of the different chess clubs. I'm working up a map to show the way to the fieldhouse." (This was written in mid-August - Editor)

R. G. SPENCER, Box 51, Benton City, Wash. writes - "Dear Mr. Wade, our Tri-City C.C. suffered a blow this past week (Aug. 11) when we learned that our President, TED WARNER, was transferred to Cincinnati, O. over two months ago.

We hadn't seen Ted for some time, so I called to tell him BILL HESS had overtaken him on our ladder, hoping for a match between them - then the blow fell. We will miss Ted and wish him luck in his new position.

We have now held an election of officers and elected FRANK J. COOPER, President, reelected BERYL ARBOGAST as Treasurer, and RODGER G. SPENCER as Secretary.

Wish we had someone to start a Chess Center here like you have in Seattle. We wish them luck. However, at 25¢ per hour it looks like they might get caught under the minimum wage law."

# KEN HARTWIG WINS 1957 WALLA WALLA TITLE

*By Neal King*

KEN HARTWIG won the second Walla Walla Valley Chess Championship in a tourney held August 9, 10 and 16th at the Walla Walla Y. Ken succeeds RAY KRONQUIST who won the title last year. Hartwig won five straight defeating in order CHET BOWERMAN, ED NIGHTENGALE, NEAL KING, RAY KRONQUIST and BRUCE BAYLEY. In the final round, Ken Hartwig clinched the title by drawing with BELDON PEARSON.

RAY KRONQUIST placed second with 5-1, losing only to the new champ in the fourth round.

Third was BELDON PEARSON who drew two games and lost his third round encounter with ED NIGHTENGALE (6th).

LEW HARTWIG, father of Ken, took fourth place. Like Pearson, Lew Hartwig also scored 4-2 but had fewer tie-breaking points. Lew lost to TOM TURNER who finished 5th and to 7th place NEAL KING.

The first three places get prizes with first getting chess magazines or equipment plus a renewal of his subscription to the Chess Letter. Kron-

quist gets either chess equipment or magazines while Pearson gets a renewal of a subscription to the Wash. Chess Letter.

TOM TURNER is a high school junior, so his fifth place showing was very good.

BILL KRAPPFEL appeared for the first round wearing gloves so he wouldn't move too fast. He had to remove a glove before making a move. However his new method didn't work too well in his second contest, a loss to Kronquist, so he gave it up.

Pearson had a bad game with Bowerman and offered a draw three times and then kidding attempted to claim a draw by repetition since he'd offered the draw three times. Pearson gained his draw anyway as Bowerman later threw away his advantage.

The tournament brought four newcomers to the club and one, EARL BIXLER, ended in the top half of the tourney.

## WALLA WALLA PEN WINS MATCH $9\frac{1}{2}-6\frac{1}{2}$

The Walla Walla Chess Club played a match with the Walla Walla Pen team, lost  $9\frac{1}{2}-6\frac{1}{2}$  and won't talk so we have no story!

PLACE	NAME	-1-	-2-	-3-	-4-	-5-	-6-	W L D	SCORE	COONS
1.	Ken Hartwig	W10	W6	W7	W2	W8	D3	5-0-1	$5\frac{1}{2}-\frac{1}{2}$	40.00
2.	Ray Kronquist	W11	W12	W5	L1	W7	W9	5-1-0	5 -1	33.60
3.	Beldon Pearson	W15	D10	L6	W13	W5	D1	3-1-2	4 -2	33.20
4.	Lew Hartwig	L5	W14	W13	L7	W11	W8	4-2-0	4 -2	25.80
5.	Tom Turner	W4	W8	L2	D6	L3	W11	3-2-1	$3\frac{1}{2}-2\frac{1}{2}$	34.05
6.	Ed Nightengale	W18	L1	W3	D5	L9	W7	3-2-1	$3\frac{1}{2}-2\frac{1}{2}$	33.45
7.	Neal King	W14	W16	L1	W4	L2	L6	3-3-0	3 -3	34.80
8.	Bruce Bayley	W17	L5	W12	W9	L1	L4	3-3-0	3 -3	29.60
9.	Earl Bixler	L12	W11	W10	L8	W6	L2	3-3-0	3 -3	28.00
10.	Chet Bowerman	L1	D3	L9	L14	W12	W13	2-3-1	$2\frac{1}{2}-3\frac{1}{2}$	26.60
11.	Neil Hunter	L2	L9	W14	W12	L4	L5	2-4-0	2 -4	26.60
12.	Bill Krapfel	W9	L2	L8	L11	L10	Bye	2-4-0	2 -4	25.00
13.	John Anderson	L16	W18	L4	L3	Bye	L10	2-4-0	2 -4	24.20
14.	Stan Weigel	L7	L4	L11	W10	---	---	1-5-0	1 -5	15.80
15.	Johnny Nash	L3	W17	---	---	---	---	1-5-0	1 -5	8.80
16.	Hugh J. Mellon	W13	L7	---	---	---	---	1-5-0	1 -5	7.60
17.	Ray Lanier	L8	L15	---	---	---	---	0-6-0	0 -6	7.20
18.	Charles Staschoreau	L6	L13	---	---	---	---	0-6-0	0 -6	6.60

# SOLVERS' CONTEST

Again we launch a solvers' contest in the hope of finding just the right combination of puzzlers to attract a large response from our readers, thereby making friends and influencing people to become more astute in their chess knowledge. One of our contests, back in the winter of '55 drew a splendid response from over a third of our total subscription list. That is the sort of results that makes us amateur publishers doggone near knock ourselves out, all them kind words now and then.

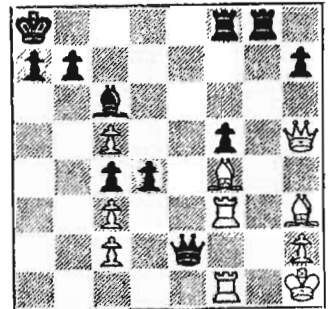
The four positions pictured are ready for one startling move by the player indicated. You are to find the move that will make your opponent roll over dead. All the spectators at the imaginary world champeen-snip will cheer and gasp with the sheer beauty of your concept while you begin to frame a clever but modest speech of acceptance for the trophy. Maybe you'd better send 3 or 4 following moves for #4 so that we'll be sure you've got it. It aint easy.

The contest will run for six months and subscription extension prizes will be awarded, the amount depending on how many like the feature well enough to send some solutions. We will list names of solvers who find the correct solutions and keep score of total points to determine the prize winners.

We have found a new process for printing the diagrams, from a stencil cut by electronics. The clarity is slightly less than by direct impression from our little jim-dandy printing press, but now instead of a hand-fed job requiring hours the pages whiz out of an electric driven machine at the rate of 50 a minute, to our astonishment and delight as we affirm that "things have gone about as far as they can go." You can be sure we wring out the full value by filling the page with cartoons, pictures and other stuff that can be used on other pages of the issue by masking one part of the stencil or another.

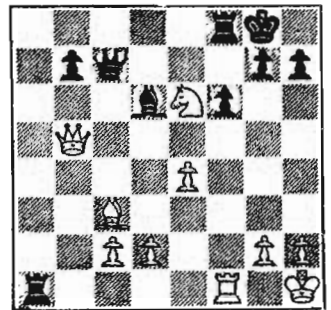
SEND SOLUTIONS TO F.H. WEAVER, 501 OLYMPIC PL. CE, SEATTLE 99, WASH. BEFORE SEPT. 20th

1



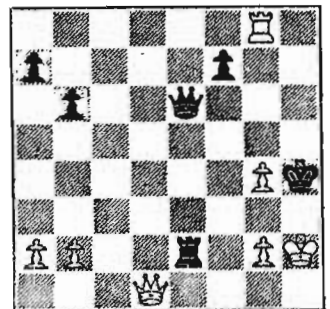
BLACK TO MOVE

2



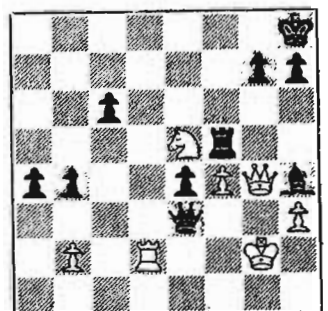
BLACK

3



WHITE

4



WHITE TO MOVE

# Chess In Idaho by Vandenburg

## FUND RAISING DRIVE

Shades of the early days of the Washington Chess Letter! In order to get out the IDAHO CHESS QUARTERLY, funds are badly needed by the Idaho Chess Association. If you would like to help out, merely send a dollar bill in an envelope with your return address on it to R. S. VANDENBURG, 913 N. 22nd Street, Boise, Idaho. In return, you will get the Idaho quarterly. The July issue has eight pages of news including a pair of games pages.

## UTAH EDGES PAST IDAHO 18 - 16

Idaho hosted Utah in a two day match at Pocatello on June 8-9. The games were played at the Idaho State College Student Union Building. The box lunches, drinks, and playing quarters were excellent. Idaho Chess Association President BOB CAMPBELL did a very good job of running the show & everyone had an excellent time and we are looking forward to revenge next year. Salt Lake is the site of next year's match.

Idaho played the black pieces on Saturday evening and fell behind  $9\frac{1}{2}$ - $7\frac{1}{2}$ . Sunday, Idaho players had the white pieces & played Utah even  $8\frac{1}{2}$ - $8\frac{1}{2}$ . Leading the Idaho team's scoring were DR. DAVE GROENIG (2-0) HAROLD HUGHART ( $1\frac{1}{2}$ - $\frac{1}{2}$ ), DICK VANDENBURG ( $1\frac{1}{2}$ - $\frac{1}{2}$ ), DARRELL FREEMAN (2-0) and JOHN ANDERSON (2-0). However, FARRELL CLARK, IRVIN TAYLOR, DONALD BENGE, RAY KOOYMAN, JAMES GATEHOUSE and KEITH LARSEN all won double victories for the Utah team.

## JOHN COSHO BOISE CHAMPION

The 1957 Boise City Class A Tourney ended in a tie among C. H. STEWART, JOHN COSHO and DICK VANDENBURG. It took TWO playoffs to decide a champion. Stewart placed second and Vandenburg third.

Dick Vandenburg tops the current A class ladder standings of the Boise club with 1258. Stewart is second with 1050 and Cosho is only fourth with 938. A.L. HARLE is third with 970.

## NEW IDAHO FALLS CLUB ORGANIZED

RUSSELL HAYNES has fathered a club drawing members from the Idaho Falls region. Thus far, attendance has been on the good side but the club lacks a good meeting place.

## DR. GROENIG WINS CANYON COUNTY TMT.

Dr. David Groenig won the Canyon County Winter Tmt. with a near-perfect record, giving up only one draw to A. B. ELLIS in one of their two games. Ellis was second and JERRY STANKE was third.

## TWIN FALLS

All Idaho chess players mourn passing of STACY SAMSON, veteran player from Twin Falls. Stacy had attended all club functions for years and was well liked by all. Twin Falls Chess Club members served as pallbearers at the funeral.

## MORE DETAILS ON MONTANA OPEN WON BY VIKTORS PUPOLS

Nine Idaho players attended the two day event in Butte May 4-5. The tournament had 48 entrants. 20 Class A, 20 Class B (both 5 round Swiss) and 8 Juniors. The junior event was a round-robin. VIKTORS PUPOLS won over 9. THEODORE STERMACH (Mont.) who scored 3-2, defeated 12. DICK VANDENBURG (Idaho) who scored 2-3, defeated GERALD MOORE (Mont.) who finished second with a 4-1 score, drew (by agreement) with 5. DR. GROENIG, Caldwell, Idaho and won over 8. HAROLD HUGHART of Pocatello, Idaho. This gave Pupols  $4\frac{1}{2}$ - $\frac{1}{2}$  and the Montana Open title. Moore, as highest Montana player, took the Montana State Championship.

ROBERT EDBERG, who had won the Montana Open title in 1956 and '55, placed fourth with  $3\frac{1}{2}$ - $1\frac{1}{2}$ . Bob beat 18. ROBERT SOUTHERN, 0-5 of Montana, lost to GERALD MOORE, drew with third place finisher C. H. STEWART of Boise, Idaho, who scored 4-1, won over BRYANT HANSON (7th with 3-2) and beat EUGENE COHAN (13th with 2-3). From Idaho Quarterly.

# WASH. TOURNAMENT CHAMPS

## WASHINGTON STATE CHAMPIONS

1957 Robert Edberg  
1956 Olaf Ulvestad  
1955 William Bills  
1954 J. L. Sheets  
1953 Elmars Zengalis  
1952 Olaf Ulvestad  
1951 Charles Ballantine  
1950 LAPSE  
1949 Robert Stork  
1948 Charles Joachim  
1947 J. L. Sheets  
LAPSE DUE TO THE WAR.  
1942 J. L. Sheets  
1941 James Hurt  
1940 J. L. Sheets  
1939 Hugh Enochson  
1938 James Hurt  
1937 James Hurt  
1936 J. L. Sheets  
1935 James Hurt  
1934 Olaf Ulvestad  
1933 J. L. Sheets  
1932 J. L. Sheets  
1931 J. L. Sheets  
1930 J. L. Sheets

## WASH. OPEN CHAMPIONS

1957 George Bishop  
1956 Russell Vellias  
1955 Ted Warner  
1954 James Schmitt  
1953 Donald Turner  
1952 O. W. Manney  
1951 Charles Joachim

## SEATTLE SEAFAIR OPEN

1957 Jim McCormick and  
Viktors Pupols  
1956 Robert Edberg  
1955 William Bills  
1954 Ivars Dalbergs  
1953 Elmars Zengalis  
1952 O. W. Manney

## SEATTLE CLUB CHAMPIONS

1957 Viktors Pupols  
1956 Dan Wade  
1955 Russell Vellias  
1954 Dan Wade and  
Charles Rosburg  
1953 Anthony Walloch

## SEATTLE CITY CHAMPIONS

1956 Viktors Pupols  
1955 Olaf Ulvestad  
1954 Charles Rosburg\*  
1953 Elmars Zengalis\*  
1952 LAPSE  
1951 J. L. Sheets  
1950 Charles Joachim

\* The 1953 and 1954  
tournaments were in  
the Seafairs those  
two years.

## INLAND EMPIRE OPEN

1957 Viktors Pupols  
1956 Viktors Pupols  
1955 Ted Warner  
1954 Dr. Max Baumwell

## PUGET SOUND OPEN CHAMPS

1957 Ivars Dalbergs  
1956 James Schmitt  
1955 Elmars Zengalis  
1954 Viktors Pupols  
1953 James Schmitt  
1952 Dan Wade  
1951 Alex Suchobeck  
1950 Robert Stork  
1949 Jim Amidon and  
Richard Allen  
1948 James Schmitt  
LAPSE  
1938 Harou Ishida  
LAPSE  
1936 J. L. Sheets  
LAPSE  
1933 Olaf Ulvestad

## STATE JUNIOR CHAMPIONS

1957 Charles Griffiths  
1956 Jim McCormick  
1955 Stephen Falk  
1954 Viktors Pupols  
1953 Ted Warner  
1952 Dennis Chipman  
1951 Gerald Schain  
1950 Charles Ballantine

## SPOKANE CITY CHAMPION

(Need history)  
1957 Robert Higginson

## TACOMA CITY CHAMPIONS

(Need history)  
1957 Vernon Holmes

## PIERCE COUNTY CHAMPIONS

(Need history)  
1957 Vernon Holmes

## OLYMPIA CITY CHAMPIONS

1957 Charles Joachim

## WASHINGTON WOODPUSHERS

1956 Lt. E. Leininger  
1955 W. "Ham" Martin  
1954 Kenneth Mulford  
1953 Jim McCormick  
1952 Sholden Rein  
1951 Gerald Schain  
1950 Carl Enz

## WASHINGTON SPEED CHAMPS

1957 Charles Griffiths  
1956 Dan Wade  
1955 Russell Vellias  
1954 G.S.G. Patterson  
1953 Elmars Zengalis  
1952 O. W. Manney  
1951 Glenn Muller  
1950 Jim Amidon  
1949 Glenn Muller

## PUGET SOUND LEAGUE CHAMPS

1956-57 Seattle C. C.  
1955-56 Seattle C. C.  
1954-55 U. of Wash. C. C.  
1953-54 Seattle Y.M.C.A.,  
Kitsap and Tacoma (Tied)  
1952-53 Tacoma C. C.  
1951-52 U. of Wash. C. C.  
1950-51 Seattle C. C.  
1949-50 Seattle C. C.  
1948-49 Tacoma C. C.  
1947-48 Tacoma C. C.  
1946-47 Tacoma C. C.

Compiled by D. Wade, Editor.



# GAMES by Wade

A most important game in the Montana Open was the struggle between GERALD MOORE of Montana and VIKTORS PUPOLS of Seattle - Tacoma, Washington.

GERALD MOORE		VIKTORS PUPOLS	
1. P-KB4	P-Q4	33 BxBch.	PxB
2. N-KB3	N-KB3	34 R-QR1	R-B3
3. P-K3	P-KN3	35 P-N4	R-B5
4. P-Q4	B-N2	36 R-QN1	P-R4
5. QN-Q2	B-B4	37 K-B2	P-N5
6. B-K2	O-O	38 K-N3	R-B1
7. N-K5	QN-Q2	39 B-Q2	P-R5
8. O-O	NxN	40 R-KN1	K-R4
9. BPxN	N-K5	41 P-N5	B-N4
10 P-B4	P-QB3	42 R-N2	R-B2
11 Q-N3	Q-N3	43 R-K2	P-N6
12 QxQ	PxQ	44 P-R3	K-N3
13 PxP	PxP	45 B-N4	B-K2
14 NxN	BxN	46 B-Q2	K-B2
15 B-Q2	KR-B1	47 R-N2	K-K3
16 B-QB3	P-B3	48 B-B3	B-N4
17 B-KN4	P-B4	49 B-Q2	R-KB2
18 B-K2	K-B2	50 K-B3	P-B5
19 KR-B1	K-K3	51 PxB	BxP
20 K-B2	K-B2	52 B-K1	R-B2ch.
21 B-N5	R-B2	53 K-Q3	R-B8
22 P-QR4	B-B1	54 K-K2	R-R8
23 B-N4	QR-B1	55 K-B3	RxB
24 RxR	RxR	56 KxB	R-K5ch.
25 B-B3	P-K3	57 K-B3	RxQP
26 P-KN3	B-K2	58 R-QB2	RxRP
27 K-K2	P-KN4	59 R-B7	R-QN5
28 K-Q2	B-B1	60 R-R7	KxP
29 R-KB1	B-K2	61 R-R5ch.	K-Q3
30 P-KN4	K-N2	62 R-R7	K-B4
31 PxB	BxP	63 RxBP	KxP
32 B-Q3	K-N3	64 Resigns.	

## SLIM PICKINGS FROM THE SEAFAIR OPEN.

JIM MCCORMICK		VIKTORS PUPOLS	
1. N-KB3	P-QB4	8. PxB	NxP
2. P-KN3	N-QB3	9. N-Q2	Q-Q2
3. B-N2	P-Q4	10 P-IR3	O-O-O
4. O-O	P-K4	11 K-R2	P-KR4
5. P-Q3	P-B3	12 N/3-K4	B-K2
6. P-K4	KN-K2	13 N-N3	P-QN3
7. N-B3	B-K3	14 B-Q2	Draw!

McCormick said, "Shall we make like Grandmasters?" Pupols didn't answer. After McCormick made his 14th move, Pupols offered a draw. McCormick was quick with his answer - "Yes! yes, yes, yes!"

## VIKTORS PUPOLS

1. P-Q4	N-KB3	15 Q-N3??	----
2. P-QB4	P-K3	If instead 15 PxP	
3. N-QB3	B-N5	e.p., with discover-	
4. P-K3	O-O	ed check, KxP must	
5. B-Q3	P-B4	be played. 16 Q-B3	
6. P-QR3	BxNch.	ch. should win for	
7. PxB	N-B3	for White.	
8. N-B3	P-QN3	15 ----	Q-K2
9. P-K4	P-Q3	16 P-B4	R-R1
10 P-K5	PxP	17 P-KR4	R-R4
11 PxB	N-Q2	18 Q-B3	B-N2
12 BxPch.!	KxB	19 P-N4	PxP???
13 N-N5ch.	K-N3	20 Q-K4ch.	K-R3
14 Q-Q3ch.	P-B4	21 Q-R7 mate.	

## CHARLES GRIFFITHS

### DONALD W. JOHNSON

### DR. A. A. MURRAY

1. N-KB3	N-KB3	20 Q-Q2	Q-N4
2. P-KN3	P-KN3	21 B-Q4	R-R3
3. P-Q3	B-N2	22 R-K7	N-K3
4. B-N2	O-O	23 BxN	RxB
5. O-O	P-Q4	24 BxP	K-R1
6. QN-Q2	QN-Q2	25 RxP	R-N3
7. P-K4	P-B3	26 RxR	QxR
8. P-K5	N-K1	27 BxN	QxB
9. P-Q4	P-QB4	28 R-K1	Q-B2
10 P-B3	P-K3	29 P-N3	P-KR4
11 R-K1	P-B3	30 N-K3	K-R2
12 KPxB	N/2xP	31 N-Q5	R-B4
13 PxB	B-Q2	32 P-QB4	B-B1
14 N-B1	R-B1	33 Q-K3	P-R4
15 N-N5	RxP	34 R-K2	P-KR5
16 NxKP	BxN	35 N-B4	PxP
17 RxB	N-B2	36 RPxB	B-B4
18 R-K1	Q-Q2	37 Q-K6	Q-KN2
19 B-K3	R-R4	White won easily.	

### FRED M. HOWARD

### TOM MAKENS

1. P-Q4	P-Q4	21 B-Q4	P-QN3
2. P-QB4	PxB	22 K-B1	N-K5
3. N-QB3	P-K4	23 K-K2	R-Q7ch.
4. PxB	QxQch.	24 K-B3	N-Q3
5. NxQ	B-N5ch.	25 P-QR4	N-B5
6. N-QB3	B-K3	26 P-R4	K-B2
7. N-B3	N-K2	27 P-KR5	P-N3
8. P-K3	O-O	28 PxBch.	KxP
9. B-K2	N-N3	29 P-N4	R-QB7
10 O-O	BxN	30 P-N5	N-Q7ch.
11 PxB	N-Q2	31 K-N4	N-K5
12 N-Q4	N/3xP	32 P-R5	N-B7ch.
13 NxB	PxN	33 K-B3	N-Q6
14 R-Q1	QR-Q1	34 PxB	PxB
15 B-R3	P-QB4	35 R-R7	N-K8ch.
16 P-B4	N-Q6	36 K-K4	P-R3
17 BxN	PxB	37 R-N7ch.	K-R4
18 RxP	N-B3	38 R-KR7	K-N5
19 RxR	RxR	39 RxP	R-QR7
20 BxP	R-Q6	40 P-N6	Resigns.

LEWIS STANSBY

EARL KNAPP

- |          |       |
|----------|-------|
| 1. P-K4  | P-K4  |
| 2. N-KB3 | N-QB3 |
| 3. B-B4  | P-KR3 |
| 4. P-QB3 | N-B3  |
| 5. P-Q4  | B-K2  |
| 6. O-O   | ----  |

Best is 6. Pxp, N-KN5? 7. Q-Q5, O-O; 8. P-KR3 and White should win easily.

- |         |      |
|---------|------|
| 6. ---- | P-Q3 |
| 7. R-K1 | B-N5 |
| 8. Q-N3 | O-O  |
| 9. Qxp  | Q-Q2 |

Better appears to be 9. ----N-QR4; 10 Q-N5? P-B3; 11 Q-N4, P-Q4; 12 Q-R4 & Black has a winning game. If instead, 10 Q-R6, P-B3; 11 B-N3 and the queen escapes. Also after 9. ----N-QR4; 10 Q-R6, NxB! 11 QxN, Nxp; 12 RxN? P-Q4; 13 Q-K2, Pxr; 14 Qxp & Black is the exchange ahead.

- |          |        |
|----------|--------|
| 10 QN-Q2 | P-QR4  |
| 11 Q-N3  | P-R5   |
| 12 Q-B2  | P-Q4   |
| 13 B-N5  | BxN    |
| 14 NxB   | PxKP   |
| 15 Nxp   | Nxp    |
| 16 Pxn   | QxB    |
| 17 QxBP  | B-N5   |
| 18 R-K3  | N-Q4   |
| 19 Q-Q7? | QxQ    |
| 20 NxQ   | KR-K1? |

Black had 20----KR-Q1 winning the exchange.

- |          |         |
|----------|---------|
| 21 R-KN3 | K-R2    |
| 22 N-K5  | B-Q3    |
| 23 P-B4  | P-B3    |
| 24 N-N6  | P-K6    |
| 25 K-B1  | P-K7ch. |
| 26 K-K1  | B-N5ch. |
| 27 B-Q2  | P-R6    |
| 28 BxB?  | ----    |

White must play 28 P-N3 here.

- |         |     |
|---------|-----|
| 28 ---- | NxB |
| 29 K-Q2 | Pxp |
| 30 R-K1 | Rxp |

31 R-N3, P-N8(Q)ch.; 32 K-B3, Q-B7ch.; 33 KxN, R-N1 mate. Black is the winner.

DAN WADE

DON W. JOHNSON

- |          |       |            |       |
|----------|-------|------------|-------|
| 1. P-K4  | P-QB3 | 10 B-B2    | R-B1  |
| 2. N-KB3 | P-Q4  | 11 B-N5    | Q-B2  |
| 3. Pxp   | Pxp   | 12 N-K5    | P-KR3 |
| 4. P-Q4  | N-KB3 | 13 BxN     | BxB   |
| 5. B-K2  | P-K3  | 14 Q-Q3    | P-KN3 |
| 6. O-O   | B-K2  | 15 NxpNP   | PxN   |
| 7. R-K1  | O-O   | 16 QxpCh.  | B-N2  |
| 8. B-Q3  | N-B3  | 17 Q-R7ch. | K-B2  |
| 9. P-B3  | B-Q2  | 18 Q-N6ch. | K-N1  |

Drawn by perpetual check!

A screwball game from Olympia showing what can happen to you if you have a great fondness for pawns! Notes are by Charles Joachim who says he got so excited watching this game he lost a pair of games he played while watching.

HARRY PARMELEE

PHIL STYMANS

- |          |       |
|----------|-------|
| 1. P-K4  | P-K4  |
| 2. N-KB3 | N-QB3 |
| 3. B-B4  | N-B3  |
| 4. P-Q3  | P-KR3 |
| 5. O-O   | B-B4  |
| 6. P-B3  | P-Q4  |
| 7. Pxp   | Nxp   |
| 8. R-K1  | B-KN5 |
| 9. P-QN4 | ----  |

Trying to grab pawn at K5.

- |         |      |
|---------|------|
| 9. ---- | B-K2 |
| 10 P-N5 | ---- |

And this is the execution of idea.

- |         |      |
|---------|------|
| 10 ---- | N-R4 |
| 11 Q-R4 | ---- |

No, you won't get the pawn!

- |         |     |
|---------|-----|
| 11 ---- | BxN |
|---------|-----|

Definitely not!

- |        |       |
|--------|-------|
| 12 QxN | B-KN5 |
| 13 RxP | N-N3  |

O.K., have the pawn, but look at your position.

- |         |      |
|---------|------|
| 14 Q-N4 | ---- |
|---------|------|

B-R3 would have been answered by 14

----NxB! 15 PxB, Q-Q8 and mate in one.

- |         |      |
|---------|------|
| 14 ---- | NxB  |
| 15 QxN  | ---- |

Not 15 QP-N7 because of Qxp/Q6.

- |          |      |
|----------|------|
| 15 ----  | B-K3 |
| 16 Q-K4  | O-O  |
| 17 P-Q4  | B-B3 |
| 18 R-R5  | R-K1 |
| 19 B-K3? | B-B5 |
| 20 Q-N4  | B-N4 |
| 21 Q-B3? | BxB? |

P-KN3 probably would have won the exchange.

- |           |      |
|-----------|------|
| 22 PxB    | B-K3 |
| 23 N-Q2   | Q-Q2 |
| 24 P-QR4? | B-N5 |
| 25 R-Q5?  | ---- |

Q-Q5 would have saved the day.

- |         |      |
|---------|------|
| 25 ---- | Q-K3 |
| 26 Q-N3 | QxR  |

27 QxB, RxP; 28 N-B1, RxP; 29 R-K1, R-KB1; 30 N-K3, Q-N6?; 31 N-B5, P-KN4?; 32 NxpRPch., K-R1; 33 Q-R5, K-N2; 34 QxNPch. K-R2; 35 N-B5, R-N6; 36 Q-R6ch., K-N1; 37 N-K7 mate. The lazy horse finally goes into action proving it's not a stinker.

A game from the postal match between Seattle, Washington and Amsterdam, Netherlands (Holland) showing 1 reason why Seattle is now leading the match  $3\frac{1}{2}$  to  $1\frac{1}{2}$ .

J. MULLER Ruy Lopez MAX BADER

- |          |       |
|----------|-------|
| 1. P-K4  | P-K4  |
| 2. N-KB3 | N-QB3 |
| 3. B-N5  | N-B3  |

Key move of the Berlin Defense, a good enough opening that is seldom, in the past 60 years, played.

- |           |      |
|-----------|------|
| 4. O-O    | NxP  |
| 5. P-Q4   | N-Q3 |
| 6. BxN    | QPxB |
| 7. PxP    | N-B4 |
| 8. QxQch. | KxQ  |
| 9. R-K1   | ---- |

R-Q1ch. is much better keeping the Black King from going to the Queen side.

- |         |       |
|---------|-------|
| 9. ---- | P-KR3 |
|---------|-------|

To prevent 10. N-N5.

- |         |      |
|---------|------|
| 10 B-Q2 | ---- |
|---------|------|

This proves to be a wasted move.

- |          |       |
|----------|-------|
| 10 ----  | B-K3  |
| 11 N-B3  | P-B4  |
| 12 N-K4  | P-QN3 |
| 13 P-QN3 | N-K2  |

The Knight starts on its victorious journey.

- |         |      |
|---------|------|
| 14 P-B4 | N-B3 |
|---------|------|

- |         |      |
|---------|------|
| 15 B-B3 | ---- |
|---------|------|

See note after 10th move.

- |          |       |
|----------|-------|
| 15 ----  | B-K2  |
| 16 P-KR3 | K-QB1 |
| 17 QR-Q1 | K-N2  |

The King arrives at its destination.

- |         |      |
|---------|------|
| 18 R-Q2 | ---- |
|---------|------|

White should take some action on his King side!

- |         |       |
|---------|-------|
| 18 ---- | P-QR3 |
|---------|-------|

- |         |        |
|---------|--------|
| 19 R-N1 | P-QN4! |
|---------|--------|

The beginning of the attack.

- |        |     |
|--------|-----|
| 20 PxP | PxP |
|--------|-----|

- |          |      |
|----------|------|
| 21 P-QR4 | ---- |
|----------|------|

White's defense is very difficult.

- |         |        |
|---------|--------|
| 21 ---- | P-N5!  |
| 22 B-R1 | N-R4   |
| 23 R-Q3 | KR-Q1! |

All Black men have joined the fight. The White pieces are poorly placed.

- |           |      |
|-----------|------|
| 24 R/1-Q1 | ---- |
|-----------|------|

Other moves are just as bad.

- |         |     |
|---------|-----|
| 24 ---- | RxR |
|---------|-----|

25 Resigns.

Both of White's Queen side pawns are doomed. Black's pawns cannot be stopped.

( All notes are by Max Bader. )

Leslie Coubrough of Tacoma sacrifices a rook and announces mate in 8 ! V. W. Bever sees he isn't kidding and resigns. This game is from Section 57 - A - 2A of W. C. F. postal chess.

LES COUBROUGH Giuoco Piano V. W. BEVER

- |            |          |
|------------|----------|
| 1. P-K4    | P-K4     |
| 2. N-KB3   | N-QB3    |
| 3. B-B4    | B-B4     |
| 4. P-QB3   | N-KB3    |
| 5. P-Q4    | PxP      |
| 6. PxP     | B-N5ch.  |
| 7. N-B3    | BxNch.   |
| 8. PxB     | NxKP     |
| 9. P-Q5    | N-K2     |
| 10 Q-Q4    | N-KB3    |
| 11 O-O     | O-O      |
| 12 B-KN5   | N-B4     |
| 13 Q-B4    | P-Q3     |
| 14 P-N4    | P-KR3    |
| 15 BxN     | QxB      |
| 16 PxN     | QxQBP    |
| 17 QR-B1   | Q-B3     |
| 18 N-Q4    | B-Q2     |
| 19 B-N5    | Q-Q1     |
| 20 K-R1    | P-QR3    |
| 21 BxB     | QxB      |
| 22 R-N1    | K-R2     |
| 23 RxPch.! | Resigns. |

Moves like the above save a lot of two cent post cards! With the maximum resistance, Black can hold out 16 cents worth of cards.

- |              |       |
|--------------|-------|
| 23 ----      | KxR   |
| 24 P-B6ch.   | K-R2  |
| 25 N-B5      | QxN   |
| 26 QxQch.    | K-R1  |
| 27 Q-R5      | K-R2  |
| 28 R-N1      | R-KN1 |
| 29 QxBPch.   | K-R1  |
| 30 R-N7      | RxR   |
| 31 QxR Mate. |       |

ROBERT L. BENNETT CHESTER BOWERMAN  
57 B - 1 A

- |          |        |                         |      |
|----------|--------|-------------------------|------|
| 1. P-Q4  | P-Q4   | 13 BxRP                 | Q-B3 |
| 2. P-QB4 | P-K3   | 14 B-KN5                | Q-N3 |
| 3. N-QB3 | N-KB3  | 15 Q-N3                 | PxKP |
| 4. B-B4  | B-N5   | 16 QxP                  | P-N3 |
| 5. P-K3  | BxNch. | 17 P-B4                 | R-K1 |
| 6. PxP   | Q-N-Q2 | 18 Q-R3, P-K4; 19 O-O,  |      |
| 7. B-Q3  | P-KR3  | PxP; 20 BxP, N-K4 * 21  |      |
| 8. N-B3  | O-O    | Q-R4, NxB; 22 B-N5, R-  |      |
| 9. N-K5  | P-B4   | K4; 23 QR-Q1, B-R3; 24  |      |
| 10 N-N4  | NxN    | B-B4, R-K5; 25 R-B3,    |      |
| 11 QxN   | QPxP   | QR-K1; 26 R-R3, P-B3;   |      |
| 12 BxBP  | PxP    | 27 Q-B2, B-N2; 28 B-    |      |
|          |        | B7, R-K8ch.; 29 resigns |      |

# POSTAL CHESS



R.R. MERK

					POINTS
7/30/57	56A3A	Parsons	1	Howard	0 2
8/1/57	56B10A	Laine	1	Lyberger	0 42
8/3/57	56A4B	Weisscher	1	Kaffenberger	0 38
8/10/57	57B4A	Finley	1	Hall	0 50
	57B2A	Laine	1	Scripps	0 44
8/11/57	57B1B	Spatz	1	Bennett	0 10
	56B11B	Spatz	1	Youngman	0 20

Although very few game results were reported this month, probably due to vacations, it is interesting to note that Parsons has set a new high for our postal standings with 1833.

We welcome three new players: Abramson, Guevarra, and Schroedel, which continues our trend towards bigger and better tournaments.

As advertised on the back cover, we can now provide cardboard sets to record positions. Winners of postal section prizes may now have a choice between a subscription extension or an equal value of the sets.

Our prizes are not large, but we do pay them ungrudgingly. One of our members won a \$5 prize in a national magazine "golden" tournament of 1949 and is still trying to collect.

"A" Division		"B" Division			
Parsons	1833	Laine	1428	Hall	1050
Weisscher	1793	Merk	1396	Abramson	1050
Coubrough	1760	Roberts	1311	Guevarra	1050
Weaver	1708	Benson	1258	Schroedel	1050
Wade	1703	McDonald	1252	Kuvara	1050
Bever	1645	Scripps	1246	Pifley	1050
Kaffenberger	1592	Haynes	1238	Sawyer	1050
Mage	1611	Edberg, A.	1220	Bemis	1034
Edberg, R.	1598	Lyberger	1216	Skoglund	1023
Carter	1565	Gemar	1216	Waldron	1022
Dickson	1525	Rogers	1210	Aldridge	1010
Husby	1520	Hamilton	1205	Pierce	1009
Skarston	1514	Gordon	1191	Ball	998
Woodward	1514	Spencer	1173	Skinner	964
Spatz	1503	Youngman	1152	Miller	946
VanNatta	1502	Nichols	1149	Notter	920
Luters	1472	Lee	1140	James	788
Knapp	1403	Tresidder	1108	Adamson	781
Mills	1401	Raleigh	1086	Jacobson	710
Phillips	1399	Bowerman	1082		
Howard	1356	Smith	1077	Blums	1000
Parker	1347	Watson	1060	Bennett	1040
Cairncross	1271	Cooper	1050	Finlay	1100
		Devenere	1050		
		Eilmes	1050		
		Franett	1050		



SEATTLE, WASH. (12)

### Cardboard Chess Sets

### FOR RECORDING POSTAL GAMES

For the convenience of our postal players who want to keep the positions of their games set up for easy reference, we offer world famous "Portland Sets", at cost.

4 COMPLETE SETS == \$1

*Order from Postal Editor*

SEATTLE, WASH. (12)

WASHINGTON CHESS LETTER

1026 E. 71st ST. SEATTLE, 15, WASH.

Return postage guaranteed  
Form 3547 requested.

B.B. Strachan  
5103 N.E. 15th Ave.  
Portland 11, Ore. 4/58