

WASHINGTON

# CHESS

LETTER



GEORGE BISHOP

"High man on the totem pole."

WASHINGTON STATE 'OPEN' CHESS CHAMPION



SUBSCRIPTION PRICE OF TWO DOLLARS A YEAR INCLUDES MEMBERSHIP IN THE W.C.F.



## CHESS LETTER

OFFICIAL PUBLICATION OF THE  
WASHINGTON CHESS FEDERATION

Editor D. E. Wade  
11023 25th N. E. Seattle, Wash.

Circulation R. R. Merk  
1026 E. 71st. Seattle, Wash.

Publisher F. H. Weaver  
501 Olympic Place Seattle, Wash.

Contributors for October:  
George Bishop, Russell Vellias and James McCormick.

### OTHER W. C. F. OFFICERS

President Dr. Griffith H. Parker  
416 Hyde Bldg. Spokane 1, Wash.

Vice President Max Mage  
2437 55th S. W. Seattle 6, Wash.

Secretary Peder Husby  
Route One E. Stanwood, Wash.

Treasurer W. H. Raleigh  
4312 Woodland Park Ave. Seattle, Wash.

Tournament Director James McCormick  
11035 Beacon Ave. Seattle, Wash.

Tournament Director Robert Edberg  
Route One Tieton, Wash.

Publicity Director Don Eilmes  
1305 44th Ave. S. W. Seattle, Wash.

### AFFILIATED W. C. F. CHESS CLUBS

Seattle, Spokane, Tacoma, West Seattle,  
McNeil Island, Kitsap County, Boeings  
of Seattle and Tri-Cities Chess Clubs.

### WHERE TO PLAY CHESS

SEATTLE CHESS CLUB In Seattle Central  
Y. M. C. A. room 604 at 4th Ave. and  
Madison St. Open seven days per week  
afternoons and evenings.

WEST SEATTLE CHESS CLUB Meets on the  
2nd and 4th Friday evenings each month  
at the High Point Recreation Center in  
West Seattle.

SPOKANE CHESS CLUB Meets Thursday ev-  
enings at the Desert Hotel.

TACOMA CHESS CLUB Meets on Friday ev-  
enings at the downtown library.

YAKIMA CHESS CLUB Meets at the Yakima  
Y. M. C. A. on Mondays at 7 p. m.

TRI-CITY CHESS CLUB (Richland, Kenne-  
wick and Pasco) meets every Thursday  
7 p. m. to 9:30 p. m. at Richland Com-  
munity Hall on George Washington Way.

WALLA WALLA VALLEY CHESS CLUB Meets on  
Friday evenings at 7:30 at the Walla  
Walla Y. M. C. A.

BELLEVUE CHESS CLUB Meets on alter-  
nate Monday evenings at 7:30. Play is  
in the various homes of the members---  
contact V. W. BEVER, Gibson 3636.

### 1956 PUGET SOUND LEAGUE NEWS

Only Seattle, West Seattle, Ta-  
coma and Boeings of Seattle have thus  
far entered teams in the League. Could  
be a double round-robin this year.

SUNDAY, NOVEMBER 18.

1 p.m.-Boeings at Tacoma Chess Club  
1 p.m.-West Seattle at Seattle Club

Other clubs wishing to take part  
in the 1956-1957 Puget Sound League!!!  
Send in your entry to the Editor now!

This is the 11th year of PSL play.

ONE YEAR (12 ISSUES) AND MEMBERSHIP IN WASHINGTON CHESS FEDERATION IS \$2  
SEND MONEY TO W.H. RALEIGH, 4312 WOODLAND PARK AVENUE, SEATTLE 3, WASH.

# PUGET SOUND LEAGUE NOV. 18

SEATTLE CHESS CLUB, SEATTLE BOEINGS, WEST SEATTLE and TACOMA CHESS CLUB fight for the 1956-1957 Puget Sound League top honors this season. No other clubs have declared their willingness to do battle.

SUNDAY, NOVEMBER 18.

One p. m. - Boeings at Tacoma Chess Club.  
One p. m. - West Seattle at Seattle Club.

SUNDAY, DECEMBER 9.

One p. m. - West Seattle at Tacoma Club.  
One p. m. - Boeings at Seattle Chess Club

This will be a double round-robin at home and away schedule. Each team plays six matches. Each team must have 5 players who will play two games in each match once with the white pieces and once with the black pieces. A substitute player is allowed to play the second game on fifth board. With clocks the time control will be 40 moves per hour.

For particulars write team captains as follows: TACOMA - C. R. HEWITT, 3158 Soundview Drive or Tacoma Club President, RONALD LOUGHEED, 4834 East B Street. WEST SEATTLE - MAX MAGE 2437 55th S. W. in the city of Seattle, of course. SEATTLE CLUB DAN WADE, 11023 25th N. E. BOEINGS CLUB MAX BADER, 6007 29th N. E. Seattle.

Other clubs, such as Bellevue, Kitsap, Fort Lewis and McNeil Island are invited to make non-league match arrangements on a challenge basis with P.S.L. captains.

The Puget Sound League Championship will go to the team with the best won-lost MATCH record. In short, a  $5\frac{1}{2}$ - $4\frac{1}{2}$  win will count as much toward the title as a 10-0 rout.

The defending champion Seattle Club is loaded for bear this year. Edberg, McCormick, Wade, Makins and Griffiths are the five starters and it is hoped Bishop, Dr. Shephard, Weaver, Mulford, Erickson, Harrison and others can play.

# WOOD PUSHERS ON NOV. 25

The annual Washington Woodpusher Tourney will be held at the Seattle Chess Club (room 604 in YMCA) on Sunday, November 25th starting at 10 a. m. It will be a one day event four-round Swiss. The time limit of 40 moves per hour stamps this tournament as one strictly for fun and no blood shall be spilled (?). Winners of all former major tournaments and recognized Master-Expert players are excluded.

Entry fee \$2. Prizes for top 3.

Tacoma says they probably won't play their best men this year but if they do, a team of PUPOLS, HOIMES, HEWITT, COUEROUGH plus the two very enthusiastic juniors, LOUGHEED and HAMILTON, would be hard to beat.

The Boeings team will play JIM TREMBOIS on first board and BADER on second. Others playing are EILMES, URIYU and HANSON.

WEST SEATTLE can play two top W. C. F. postalites on their first two boards. WEISCHER and MAGE are the 2. Others may be HOWARD and VUKONICH.

Going out on a limb and then being sawed off seems to be a habit at this time nearly every year. Ye Olde Prognosticator sez:

1. Seattle Chess Club of course
2. Tacoma Chess Club if all of their best players play.
3. Boeings.
4. West Seattle.

Others: 5. Kitsap, 6. McNeil, 7. Bellevue and 8. Fort Lewis.

Never before have we had a double round-robin because we always had too many teams competing. A double round-robin will make it possible for a team to gain revenge without having to wait until next year!

The Editor.

SEAFAIR OPEN  
Seattle, 1956

D. E. HAMILTON

DICK PARSONS

1. P-Q4	N-KB3	5. P-K4	P-B3
2. P-QB4	P-KN3	6. R-B1	O-O
3. N-QB3	P-Q4	7. N-B3	Q-N3
4. B-B4	B-N2		

Or 7....PxP; 8. BxP, N-Q4; 9. B-KN3, N-KN; 10 PxN, N-Q2; 11 O-O, Q-R4.

8. Q-B2?	N-R4	17 N-N3	PxP
9. B-N3	NxE	18 QNxP	B-B4
10 RPxN	B-B4	19 N-KN5	R-Q2
11 Q-Q2	PxP	20 BxPch	RxB
12 BxP	R-Q1	21 NxR	QxN
13 N-KR4	B-Q2	22 NxR	QxN
14 N-R4	Q-B2	23 Q-Q8ch	Q-D1
15 N-QB5	P-K4	24 QxQch	-----
16 N-B3	P-N3		

24 Q-R4 continues pressure (Parsons).

24 ----- BxQ 25 O-O -----

25 R-R4 may save time.

25 ----- P-B4 26 P-R4? -----

26 KR-Q1 makes an immediate bid for pressure and Black does not have time to prevent P-R4 later.

26 -----	N-B3	37 P-N3	N-R4
27 P-K4	R-K1	38 R-QN1	N-B3
28 KR-K1	B-N2	39 K-B3	B-D6
29 R-B2	N-N5	40 P-N5ch	K-K3
30 R-Q2	B-Q5	41 R-KR2?	P-QR3
31 K-B1	K-B2	42 R/1-KR1?	N-Q5ch
32 P-B4	K-B3	43 K-K3	NxP
33 P-N4	R-K2	44 RxP	B-N2?
34 P-KN3	N-B3	45 P-N4	N-Q5
35 K-N2	N-R4	46 R-KB1	K-Q2
36 R/2-K2	N-B5	47 K-Q3	N-K3

And now 48 K-B4 is best for if K-B3;

49 P-B5! PxP; 50 KPxP and if 50 .....

NxP; 51 P-B6.

48 R-R3? R-KB2 51 K-Q2 P-B5\*

49 R/3-B3 P-N4 52 P-K5 K-B3

50 PxP PxP 53 K-B2??? N-Q5ch

And White Resigns. Best try would be 53 K-B1 for if Black should play 53 ...K-B4; 54 P-B5! PxP; 55 PxP, NxP; 56 P-K6, NxR; 57 PxR livens things up with chances for White and a probably guaranteed draw.

\* Parsons suggests that 51..... P-B5; is a mistake, but even ....B-Q5 does not stop White from playing as above.

WCL PRESENTS A NEW FEATURE

devoted to *Junior Chess*

ANY COMMENTS, CONTRIBUTIONS, OR CRITICISMS SHOULD BE SENT TO DENNIS HAMILTON, 5429 South Sheridan, Tacoma 3.

\* \* \*

# junior chess

HIGH SCHOOL CHESS in the fall should be devoted largely to planning and organizing. High school clubs should hold team qualifications and make contact with other schools about arranging matches. If school teams get under way soon enough, an inter-team match could be scheduled for the first of the year. Let's hear some voices on this.

BRITISH COLUMBIA high school chess will get under way with the B. C. High School Championship, November 2-3. A suggestion of a "Junior International" for this spring has come down from the North. Can we meet the challenge?

THE WOODPUSHERS' Tournament is a big opportunity for juniors and high school players. Players in the Seattle area should plan on attending.

1957 WORLD JUNIOR CHAMPIONSHIP will be held in Canada, the U. S. candidate to be the winner of the '57 U.S. Junior.

A HIGH SCHOOL CHESS LEAGUE SYSTEM similar to that of the PSL is feasible if enough interest is shown.

POSTAL JUNIORS now playing in WCF postal sections are Dick Parsons, Jim Miltimore, Ron Skinner and Tom Notter, all of Centralia, with Steve Falk, Terry Nelson, Fred Van Matta and Dennis Hamilton also. Stan Sawyer, Seattle student has been successful in Chess Review sections with the author just getting started.

MR. R. B. LEACH, leader of the Lincoln High School (Tacoma) Chess Team is interested in contacting other teams in order to make match arrangements. What other teams are ready to set up match schedules?

THE AUTHOR'S collection of junior games, although extensive, includes only those played by himself. HOW ABOUT SOME GAMES FROM THE READERS?

INFORMATION concerning tournaments and activities throughout the state is at a premium. Drop me a line.

THE QUESTION arises as to just what the junior reader is interested in seeing published. Is complete analysis and game study, or opening analysis desired. Would diagrammed positions with the 'meaty' part of a game or complete games be preferred? Please write, phone or deliver your ideas, but by all means overwhelm me!

deh

# BISHOP CAPTURES STATE 'OPEN'

## CORNELIUS, EDBERG, & PUPOLS NEXT HIGH AT SPOKANE

By Dr. Griffith Parker and Dan Wade

Genial GEORGE BISHOP finally came into his own at Spokane when he won the 1957 Washington Open with a 5-1 score. His was a popular victory as everyone likes George and he has been knocking at the gates of a title for a long time.

Tied with GORDON CORNELIUS, VIKTORS PUPOLS, ROBERT EDBERG and BELDON PEARSON at the end of five rounds with a 4-1 score, Bishop faced Pearson in the final round and scored a quick sacrificial mate. Meanwhile, Edberg played Pupols to a draw and Cornelius drew his game with TOM MAKINS.

GEORGE BISHOP has made his home in many places in his sixty-plus years. He has made Seattle his home during the past few years. He has spent this time gradually getting rid of his chess "rustiness" caused by a long layoff from the game. In the early 1930's George was quite active in Washington, D. C. tournament activities. Among other successes, he likes to recall his win over the U. S. Open Champion SAM FACTOR in a radio match game. We hope to give you it in our next issue. Since living in Seattle, George has helped right along with a lot of ideas and work with our Washington Chess Letter, even taking a whirl at being editor of the magazine.

BISHOP won four and drew two games in winning the Washington Open. Draws were with CORNELIUS (his best played game) and PUPOLS. George felt he had Pupols beaten but let that slippery fellow escape. George came close to a licking only once in his six games. DON EILMES nearly upset the champ's apple cart while playing some of the best chess he has played in his short career.

GORDON CORNELIUS of Spokane, who is the Spokane and Eastern Washington title holder, placed second on Median Points with ROBERT EDBERG of Tieton, current Seafair Open and Montana State champion third and VIKTORS PUPOLS presently Inland Empire Open and Seattle (Open and Closed) City champ fourth. All three of the runner-ups finished undefeated with three wins and three draws to score  $4\frac{1}{2}$ - $1\frac{1}{2}$ .

BELDON PEARSON of Dayton, Washington deserves special mention. This was his first tournament and he played good chess throughout. If he has a chance to compete in future events, he will be heard from in no uncertain terms.

A total of twenty-four players competed and represented three different states. Besides the Washington players, JOHN BARTO of Great Falls, Montana and HORTON THOMPSON of Kendrick, Idaho put in appearances.

Profiting by his experiences in tournaments in several states, but especially in the Nevada tournament, ROBERT EDBERG did a wonderful job of directing. Pairings were made by the Harkness System in the first round and by scores after that based on the ratings which were adjusted after each playing session.

Prizes in the second half of the standings went to LEMUEL BALL and RALPH RICE of Spokane. Both are newcomers to tournament chess. Junior prize money was split between MARY (Mrs. Don) EILMES of Seattle and JOHN HARTMAN of Spokane. Mary was the only entrant on the distaff side and held her entry in abeyance to fill in if there were an uneven number of entries.

The usual banquet Saturday night saw eighteen at the tables. Speeches



were dispensed with and everybody filled in the time with the over present banter and chess talk.

The top four players automatically qualified for the Washington Closed Tournament. The following 4-2 scoring players were named as alternates in their order of finish: BELDON PEARSON of Dayton, TOM MAKINS of Seattle, ROBERT HIGGINSON of Spokane and DONALD DANIELS of Spokane. In case any of the qualifiers cannot play in the Closed, alternates are invited in the order listed.

While the tournament was fair-sized, and thanks to the entries from the Westside, of good strength, it was a disappointment to the host Spokane Club. The local group invited the tournament to Spokane with the idea and purpose of giving the players in the eastern part of the State a chance to play in their own State championship by holding it east of the mountains. It was expected that the other chess groups east of the mountains outside of Spokane would welcome the opportunity to compete if the tourney was held in Spokane. Only 3, instead of an estimated 15, entered the tourney from eastern towns outside the City of Spokane. They were PEARSON of Dayton, EDBERG of Tieton and the Reverend ALFRED CARTER of Ritzville. A good reason for this possibly is the starting time early Saturday morning instead of noon. Many Spokane players did not compete because they work on Saturday morning and distances are so great in the eastern part of the State between towns that the early start meant many players would have to leave their homes Friday night in order to play Saturday morning.

It was not obvious to the observer that the calibre of play was any better under the 40 moves in two hours rule than under the total  $2\frac{1}{2}$  hour time limit in the last Inland Empire Open event. The latter makes for a much snappier event and makes it possible to start at noon on Saturday and finish early Sunday. The final tabulations were completed at 11 o'clock Sunday night in this affair.

#### SNAPSHOTS OF THE TOURNEY

The newly decorated Nile Room at the Desert Hotel made a wonderful site for play. Thanks go to the hotel for its excellent cooperation in service as well as room rental.

Edberg taking charge of everything. He introduced new and original pairing cards with "everything" on them.

Bill Bailey (Rear Admiral U. S. N. Ret.) playing in his first tournament and forgetting to stop his clock when Pupols was in time pressure. He says he had a lot of fun. He is from Rhode Island and only temporarily in Spokane.

Ralph Rice borrowing no-doze tabs on Sunday after playing all day Saturday and working all that night.

George Bishop, when asked to what he credited his success to, answered, "No doze tabs!"

Mary Eilmos getting a thrill over her last round win from Parkor. (She threatened to never speak to me again if I beat her so I had to let her win, besides that she outplayed me.)

Parkor blaming his weak showing in the last I.E.O. on his duties as director but now admitting he is playing punk chess.

Mrs. Lyborger, her grand daughter and Mrs. Parkor lending beauty to the banquet dinner as well as charm.



In spite of a disappointing  $2\frac{1}{2}$ - $3\frac{1}{2}$  score, there was never a gripe or complaint from Dick Parsons. Others could well profit by emulating his behavior. He is a real sportsman and competitor. Dick was the Lyberger's guest for weekend. He and Al became acquainted through Washington postal chess.

Don Eilmes was overly gentlemanly in allowing one of his opponents to take back an illegal knight move and make a move with another piece. This just isn't done in tournament chess.

Edberg and Pupols playing "horsey" in their last game. Queens and bishops were off the board, the rooks were on the back rank and the four knights pranced back and forth getting nowhere.

Very much like the last I. E. O. when he offered a draw to Pupols in the 6th and final round, Cornelius offered a draw to Makins in the last round even with a pawn advantage. He felt he couldn't hold it.

Daniels happy with a 4-2 finish after a bad start. He lost his first round game to Kiperts when he gleefully grabbed a pawn with a rook only to lose it to a bishop sleeping in an unnoticed corner!

Pearson drives to Walla Walla to play with that club on Friday nights. When Dr. Baumwell couldn't go to Spokane for the team match, Beldon was placed on board one and lost two tough games to Cornelius. In fact, he had a win in their second game but missed it.

Don Eilmes remarking before his game with Higginson, "I wonder if his jinx over me is going to still hold." It did.

Kittredge and Thompson played for 116 moves before Kittredge was finally mated. The game was adjourned twice. Horton Thompson, in his seventies, is now a fixture at Spokane tourneys. He has played in all three Inland Empire Opens, and now the Washington Open. He raises prize gladiola bulbs as a hobby. He can not beat the hot-shots but does well against the others.

Three chess sets were left behind in the playing room. Dr. Parker has them and is waiting for the owners to claim them. SUMMARY ON PAGE 16.

SPOKANE	$5\frac{1}{2}$	WALLA WALLA	$4\frac{1}{2}$
Gordon Cornelius	2	Beldon Pearson	0
Robert Kittredge	0	Ken Hartwig	2
Ray Kromer	1	Ray Kronquist	1
Dr. G. H. Parker	1	Ed Nightengale	1
Don Daniels	$1\frac{1}{2}$	Byron Bayley	$\frac{1}{2}$

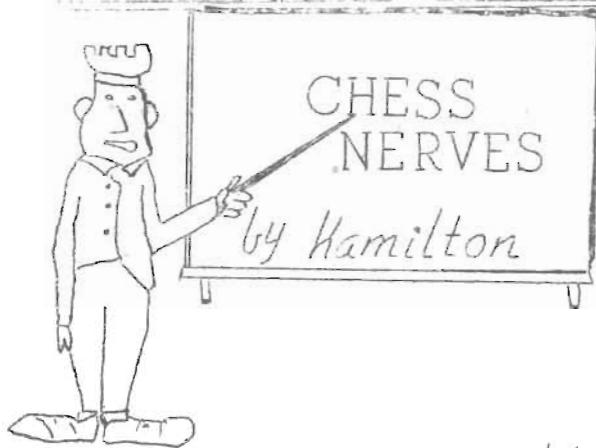
In first games, Cornelius, Kromer and Dr. Parker won and Daniels drew to put Spokane ahead  $3\frac{1}{2}$ - $1\frac{1}{2}$ . Walla Walla won three of the second five games with Hartwig, Kronquist and Nightengale scoring points in the rally. However, Cornelius won his second & Daniels picked up a win to keep Spokane on top by one point  $5\frac{1}{2}$  to  $4\frac{1}{2}$ . Ken Hartwig was the star for the losers with two wins while Cornelius was the chief reason for Spokane's victory with his two wins. Pearson played on first board for Walla Walla in place of Dr. Baumwell who was unable to travel up to Spokane for the match.

#### CHARLES HEWITT WINS TACOMA SPEED TOURNAMENT

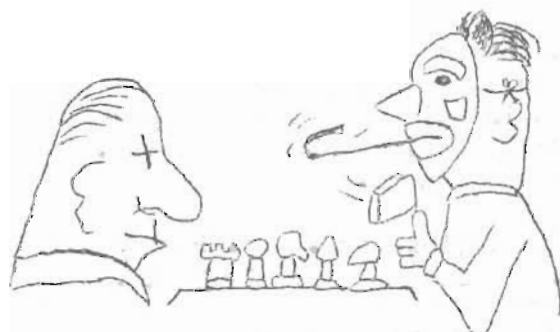
Charles Hewitt won a 6 player rapid transit tourney held Friday, Sept. 28th. Mrs. Whitis was the only participant attending because of a tourney notice in the Tacoma News Tribune.

C. HEWITT	X	1	$\frac{1}{2}$	1	1	1	$4\frac{1}{2}$ - $\frac{1}{2}$
V. HOLMES	0	X	1	1	1	1	4-1
D. HAMILTON	$\frac{1}{2}$	0	X	1	1	1	$3\frac{1}{2}$ - $1\frac{1}{2}$
R. LOUGHEED	0	0	0	X	1	1	2-3
MRS. WHITIS	0	0	0	0	X	1	1-4
G. WOLOVER	0	0	0	0	0	X	0-5

The Editor invites all of our chess friends from Tacoma and Spokane and all other localities to be the guests of the Seattle Chess Club at the annual WASHINGTON WOODPUSHERS



SURPRISE MOVE



DISREGARD YOUR OPPONENT



RELAX

No wonder the kibitzer who has closely followed a game can find a good move more easily than the player who, numbly fearing that any move may lose the game, analyzes a variation three or four times.

Players should achieve an objective attitude as if they were merely analyzing the game of someone else. This ability to observe objectively leads toward more relaxed play, allowing positions to be judged more accurately.

Knowing basic positions through experience or books prevents wasted analysis on obvious positions and allows more time for perpetrating combinations and subtleties to add color to one's game (as well as points to one's score).

Even though no added benefit may result, surprise moves should be found and be used where ever possible. Being confronted with a surprise, tricky move may befuddle & confuse an opponent who has become too nervous and keyed up in his play. Such a player may blow up and give away the game while an objective player will accept the move at once and find, or try to find, the best reply - sometimes an even more surprising and befuddling move!

The player should not be affected by the actions of his opponent. Many expressions and motions may be entirely for your benefit alone. A raised eyebrow can provoke a lot of time wasting analysis & worry in search for something that doesn't exist by the face-conscious player who fears his every move places him closer to springing a trap set for him.

In maintaining a relaxed attitude, it may be desirable to avoid chess altogether in periods between rounds. Take in a movie or go for a stroll. This can help relieve tensions which could become overpowering after several hours of continuous chess activity.

The player who intends to be active in tournament chess should learn analyses and prepared variations as they are discovered, or witnessed, rather than all at once a few days before a major tournament. Pity the poor player who plays a newly learned variation only to forget important - even decisive - analysis when only half way thru.

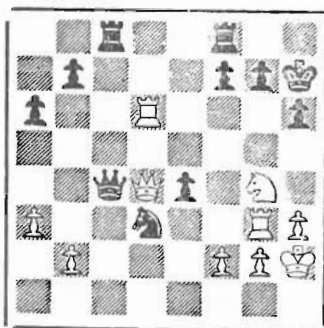
The author finds leaving a game while it is his opponent's turn, often aids deciding on a continuation. Standing alone, considering the game mentally along maxims applying to the position, he can often see in his mind what may have been overlooked completely if still staring at the board.

This is an example of objectivity this scribe has attained only intermitantly.

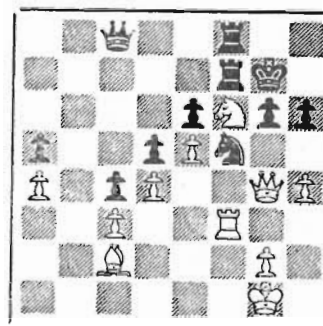


# SOLVERS' CONTEST

## CHESS LETTER SOLVERS ARE BETTER THAN THE MASTERS



FAMOUS 6-MOVE BRILLIANCE/  
IS SOLVED IN 4 BY OUR READERS!



1 QXPt, K-R1; 2 BxN, PxB;  
3 CxKt; etc.

Several years ago the British magazine "Chess" presented a series of brilliant mating attacks by such world famous masters as Paulsen, Tarrasch, Mason, Euwe, Reshevsky, Wood, Flohr, and Tartakower, dating back over the past 60 years. We selected for our last end game the position pictured at the left above, for which the actual game solution was 1 RXPch, PxR; 2 N-B6ch K-R1; 3 R-N7, KxR; 4 N-K8d ch, K-N3; 5 Q-B6ch and 6 N-N7 mate. Mittelman v. Clausen, 1928. A magnificent concept by Herr Mittelman, marching inexorably on to victory.

The following 4-move solution has been received from Sween, Spencer, C. Dolph, Hamilton, Oldham, and P. Dolph.

- |              |                            |
|--------------|----------------------------|
| 1 N-B6ch     | K-R1 (otherwise mate in 3) |
| 2 RxNP       | KxR (otherwise mate in 3)  |
| 3 N-R5ch     | K any                      |
| 4 Q-N7 mate. |                            |

So, you can see that chess has improved in the past 28 years. Who knows but what someone will find a quicker solution before another 28 years rolls by. Not that one of our solvers didn't try, --with 1 KxPch, K-N1; 2 N-B6, checkmate. But the chess world aint quite ready for that one yet, Sam.

It didn't take a perfect score to win the last contest. Cliff Dolph, who won first prize in both the subscription extension division and also in the cash pool, missed a position the first month, and didn't even try to solve the gambler's choice, which he thought might be a trick on our part, with no solution possible. Other prize winners were Phil Dolph, of Junction City, Oregon, and Bruce Oldham, of Portland. Others scoring high on the list were: Sween, Spencer, Spatz, Hamilton, and Andrew Thompson.

The comment we have received indicates that our readers prefer chess situations that are taken from actual games, or at least that resemble actual conditions of the game, rather than artificial compositions.

A new Solvers' Contest will be announced next month. It will have a novel twist, because we now have an anonymous PATRON. Since medieval times, maybe before, patrons have encouraged art, literature, science, and even the discovery of America. Now we have one who wishes to encourage solvers' contests. He intends to enter, and being one who does not like to finish second, or to win his own prize, he has donated a SECOND PRIZE which will be more valuable than first prize.

Now, while we dig up some interesting positions to beguile your idle hours, you can be making up your mind to enter the new super contest, with the big SECOND PRIZE. Many other prizes, of course, and monthly recognition of your astuteness is offered for our pleasure in hearing from you. FHW

# WARNING

DO NOT ATTEMPT TO PLAY BRIEGER'S DEFENSE ( P-Q4, P-Q4; 2 P-QB4, B-B4!) without first reading the amazing 8-page booklet which we are offering for sending in the name of one of your chess playing friends for a 6-month trial subscription for \$1. To do so (playing it without reading the booklet) would be like opening Pandora's Box. You would be fooling with dynamite, twisting a lion's tail, and lousing yourself up real good. So line up a trial subscription and read the book.

Robert Brieger, Texas Champion, chess expert, and a great friend of the people, has devoted four years to expanding and proving the little-known defense to a point where it will stand up in major competition against master opponents. Its surprise value and cooked variations will knock out less-than-master opponents like a hot stove melting snow flakes.

Your efforts in behalf of increasing our circulation will benefit us all by enabling us to produce a better Chess Letter.

Let's look at the figgers. About a year ago we had less than 150 members, and our budget for printing Chess Letter was less than \$25 a month with which to buy paper, ink, stencils, postage, and the other necessary expenses. We took a chance that an improved magazine would draw more subscribers, and began spending \$1.55 a month more for new covers and reproduction of photographs, and even bought a new font of type, at \$2.65, for our little jimdandy printing press. Now our readers number 200 plus those who read member's copies or wait in line for those at chess clubs and libraries in Washington, Oregon and Montana. Our budget is now up to \$35 a month and we can plan for better things. Believe us, when a member fails to renew it is a crises that might deny us an extra page in the magazine. But when we get a new subscriber we can look hopefully in the supply catalogue for some small improvement.

Where are our members? A quick survey of the list shows 59 in Seattle, 21 in Oregon, 13 in Spokane, 9 in Tacoma, 56 in other Washington cities, the remainder in 9 other States, Alaska, and Canada.

A subscription list of 200 may not sound like much, but remember that these are chess players! National chess magazines of many Countries have only 600 subscribers. For a regional chess publication we are on our way.

We have a \$435 mimeograph machine, a \$75 printing press outfit, all paid for, and money in the bank too, so from now on any increase in support will go directly into the betterment of the magazine and promotion of better chess events.

Lean foreward a little, members, and sign up a trial subscription for us. Your friend will get his dollar's worth and you will be ready for 1 P-Q4.

SEND MONEY AND ADDRESSES TO W.H. RALEIGH  
4312 WOODLAND PARK AVE. SEATTLE 3, WASH.

# in a lighter vein



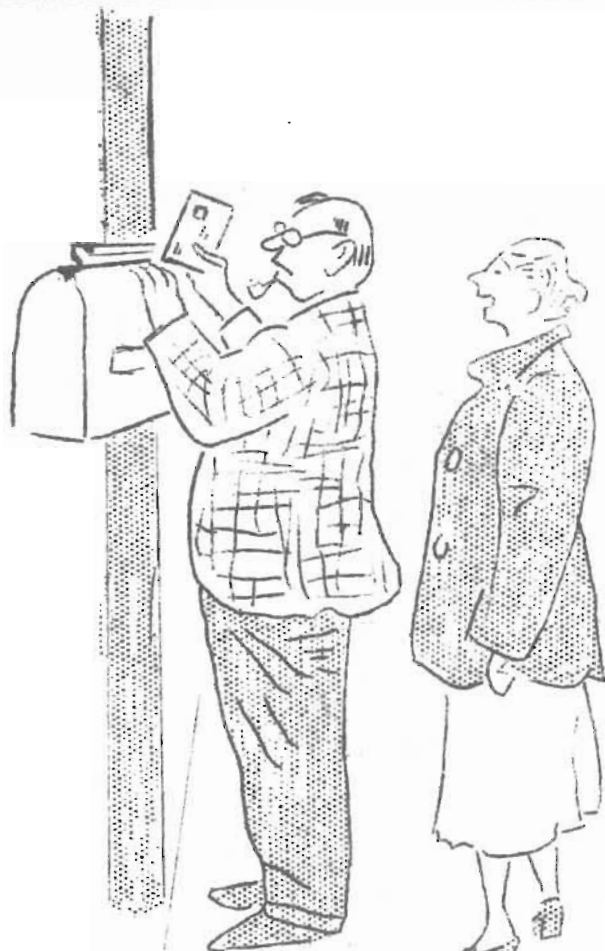
"Doc, I'm getting so weak I can't push a pawn two squares in one move. What kind of an opening is 1. P-K3?"



"That shovel operator is pretty good. He's a pawn ahead already."



"Wouldn't you say that Filbert is carrying his interest in chess a little too far?"



"You've been standing there with that chess move for a half-hour. Let loose. Live dangerously!"

# CHESS TEST

COVER THE GAME SCORE WITH A SHEET OF PAPER AND LOWER IT LINE BY LINE.

NIMZO-INDIAN: 1. P-Q4, N-KB3; 2. P-QB4, P-K3; 3. N-QB3, B-N5; 4. P-K3, P-B4; 5. P-QR3, BxNch; 6. PxB, N-B3; NOW TRY TO GUESS WHITE'S BEST MOVES.

7	B-Q3	1 POINT	No credit for N-B3
	P-QN3		
8	P-K4	4 POINTS	
	P-K4		
9	P-Q5	2 POINTS	Deduct 5 points for 9. PxP
	N-QR4		
10	N-B3	1 POINT	
	Q-K2?		Black is losing valuable time. ...P-Q3 was better.
11	O-O	1 POINT	
	B-R3?		Black will never have time to capitalize on this.
12	N-R4	3 POINTS	
	P-KN3		
13	P-B4	2 POINTS	
	O-O-O		
14	N-B3	4 POINTS	
	P-Q3		
15	PxP	1 POINT	
	PxP		
16	B-N5	3 POINTS	White is now showing up the weakness of Black's 10th.
	P-R3		
17	B-R4	1 POINT	
	R-Q3		
18	NxP	4 POINTS	Destroying the Black center.
	QxN		
19	B-N3	2 POINTS	
	Q-K2		
20	P-K5	3 POINTS	
	R-Q2		
21	RxN	3 POINTS	
	P-R4		
22	P-KR4	1 POINT	If 22. ...BxP; 23. P-Q6!
	B-N2		
23	Q-R4	3 POINTS	
	R-N		
24	QR-KB	1 POINT	
	R-N2		
25	P-Q6	3 POINTS	
	Q-Q1		
26	P-K6	2 POINTS	
	Resigns		

NOW ADD UP YOUR POINTS AND FIND OUT YOUR STRENGTH AS SHOWN IN THE TABLE BELOW

MASTER	40-45
EXPERT	35-39
CLASS A	29-34
CLASS B	20-28

Although Master games have previously been selected for this series, for their instructive value, it might be possible to rate local games also. If you would be interested in having this done, drop a card to George Bishop, 616 Madison St. Seattle, Wash.

# INTRODUCTORY NOTES



Jim McCormick



Bob Merk



Vic Pupols



Dan Wade

In the second of our hoped for long series of Introductory Notes, we have the pleasure of introducing BOB MERK and VIC PUPOLS. As was once written in the pages of the Chess Letter and still holds good, Merk even rymes with work. Bob has been working on the Chess Letter since 1951 or at least a year longer than anyone else presently working on the Chess Letter. Merk takes care of all WCF postal business which is job enough all by itself. He does not stop there, however, but keeps care of all WCF circulation matters, also job enough for one man. Bob Merk has a mimeograph machine of his own and runs off both sides of our back cover every month. He addresses all covers and stamps them before they are picked up either by editor Wade or publisher Weaver to be put on the back of each Washington Chess Letter at the end of each month.

Besides forming many postal sections each year and keeping track of them, Bob also plays in several postal sections himself. At one time he was the top man in the "B" section. Bob keeps up a lively correspondence for WCF postal and circulation business all of the time. Merk was voted, and won unanimously, the Oscar award for doing the most for Washington chess.

Merk is unable to participate in tournaments and other WCF activities away from his home but enjoys following those activities and meeting the players he has read about. Drop by and play him a game sometime.

Vic Pupols will be found either on top, or very close to the top, in all WCF tournament final standings. A young player with great drive, Pupols is a fighting end game expert very difficult to defeat. He has won a Puget Sound Open, an Empire Open (Spokane), a Seattle Open and a Seattle Closed tournament since coming to the Pacific Northwest a few years ago. He is one of the Latvians whose chess triumphs have dotted the nation in recent years. Vic has also played for Tacoma and the Latvian Club in two Puget Sound League campaigns with terrific success.

Vic sits down to start a tournament game with an air of great confidence surrounding him. Perhaps a faintly amused smile, or perhaps it is only in the mind of his opponent, but Pupols makes one feel that it will be only a matter of time before he is check mated.

Although Pupols is only in his early twenties, he lives, or gives the impression of living, a fast, hard pace as though he expected his next breath might well be his last! He has a good personality and enlivens any party with his wit. In this he may have but one peer - Olaf Ulvestad. The two together can be a riot!

Pupols has played and won many fine games, but like other top players, seems to get the most enjoyment out of his biggest swindles - games he most certainly is beaten in only to swindle his opponent out of it and gain either a win or a draw.

Pupols worked for the Washington Chess Federation one year serving as tournament director.

Next month we will try to give you more Introductory Notes. Send in pictures.

DW



# GAMES by Wade

Hugh Noland, winner over such "quality" players as Ulvestad, Bills, Warner, etc. is beaten by Wade in the 1956 Seattle C. C. tourney. This was the opening round game.

D. WADE

H. NOLAND

1. P-Q4	P-Q4
2. N-KB3	B-B4
3. QN-Q2	N-KB3
4. P-KN3	QN-Q2
5. B-N2	P-B3
6. O-O	Q-B2
7. P-B4	P-K3
8. N-R4	B-N5
9. PxP	KPxP
10. Q-B2	O-O-O
11. P-K4	PxP
12. NxP	N-Q4
13. N-QB3	N-N5
14. Q-R4	P-QN4?
15. Q-N3	----

15 NxP looks good here but text gives White a good attack without a sacrifice.

15. ----	B-K3
16. P-Q5	NxQP
17. NxN	BxN
18. BxB	PxB
19. B-B4	Q-N3
20. QxQP	N-B4
21. Q-R8ch.	K-Q2
22. QR-Q1ch.	K-K1
23. KR-K1ch.	N-K3
24. RxRch.	QxR
25. QxP	B-N5
If 25----P-N4? 26 B-B7.	
26. N-B5	K-B1
If 26----BxR? 27 N-Q6ch. wins.	
27. B-Q6ch.	BxB
28. RxN	B-N5
29. N-Q4	P-N3
30. P-QR3	B-K2
31. R-K1	B-B3
32. R-Q1	Q-Q4
33. P-KN4?	P-R4??

Premature and the losing move.

34. Q-N8ch.	B-Q1
35. QxBch.	QxQ
36. N-K6ch.	K-K2
37. NxQ	RxN
38. RxR	KxR
39. PxP	PxP
40. K-N2	K-B2
41. K-N3	K-Q3
42. K-R4	Resigns.

The following game is from the final round of the 1956 Seattle C. C. tournament and all Wade needed was a draw to win the tourney. Bishop should have won this fine positional battle.

G. BISHOP

D. WADE

1. N-KB3	N-KB3
2. P-QN4	P-K3
3. P-QR3	P-Q4
4. P-K3	B-Q3
5. B-N2	QN-Q2
6. P-B4	P-B3
7. P-Q4	P-QR3
8. QN-Q2	O-O
9. B-Q3	R-K1
10. N-K5	B-B1
11. O-O	P-KN3
12. P-B4	B-N2
13. P-N4	NxN
14. QPxN	NxP
15. QxN	PxP
16. B-Q4	PxB
17. N-K4	P-KR4
18. Q-N5	QxQ
19. PxQ	P-R4
20. N-B6ch.	BxN
21. NPxB	P-N3
22. BxP	PxP
23. PxP	B-R3
24. R-R5	B-N4
25. R/1-R1	RxR
26. PxR	R-R1
27. K-B2	K-B1
28. K-K1	K-K1
29. K-Q2	K-Q2
30. K-B3	R-R3
31. R-R2	R-R1
32. K-Q4	R-R3
33. K-B5	R-R1
34. R-KB2	R-R3
35. R-B4	R-R1
36. R-Q4ch.	K-K1
37. K-Q6	R-B1
38. K-B5	R-R1
39. B-B7	R-B1
40. B-Q6	R-R1
41. K-N6	R-R3ch.
42. K-N7?	RxP
43. K-N6	----

If 43 B-B7 attacking R and threatening mate in one, Black answers B-R3ch. 44 K-N6, R-Q4; 45 RxR loses or 45 KxB loses, or 45 R-QR4, K-Q2 and White again loses. White, seeing this plan would lose (after losing the QRP) improvised with the text.

43. ----	R-R5
44. B-N4	R-R3ch.
45. K-N7	R-R5

46 R-Q6! B-B5  
 If instead 46----RxB? 47 K-B7 wins.  
 47 K-B7 R-R2ch.  
 48 KxP B-Q4ch.  
 49 K-B5 R-B2ch.  
 50 K-N6?? R-N2ch.  
 51 K-B5 RxB  
 52 KxR P-Q7  
 53 P-K4 P-Q8(Q)  
 54 PxP PxP  
 55 Resigns.

Lucky? Well, yes! We would have inflicted these games upon our poor suffering readers many months ago if we had not lost the "gems" in what we laughingly call our files! We have hundreds of games laying around the house - some we have used, some aren't worth publication and many are Master games which we can use only sparingly in a publication such as ours.

Two of our better juniors tangle in the recent Seattle Seafair Open.

#### D. HAMILTON

1. P-Q4  
 2. P-QB4  
 3. N-QB3  
 4. B-N5  
 5. P-K3  
 6. N-KB3  
 7. R-B1  
 8. B-Q3  
 9. PxP  
 10 O-O  
 11 B-R4  
 12 BxB  
 13 Q-B2  
 14 KR-K1  
 15 P-K4  
 16 NxP  
 17 N-B5  
 18 RxRch.  
 19 NxP  
 20 QxP  
 21 RxQ

White won.

#### C. GRIFFITHS

P-Q4  
 P-K3  
 N-KB3  
 B-K2  
 P-B3  
 QN-Q2  
 O-O  
 P-QN3  
 KPxP?  
 P-KR3  
 N-R2  
 QxB  
 N/R2-B3  
 R-K1  
 PxP  
 B-N2?  
 Q-Q3  
 RxR  
 Q-B2  
 QxQ  
 N-B1

#### CHESS CAN BE BEAUTIFUL!

1. P-Q4 P-Q4  
 2. P-QB4 P-QB3  
 3. N-KB3 N-B3  
 4. N-B3 PxP  
 5. P-QR4 B-B4  
 6. N-K5 P-B4  
 Looks good but proves premature.  
 7. P-K4! NxP  
 8. Q-B3 PxP

9. QxB N-Q3  
 10 BxP! P-K3  
 11 B-N5ch. K-K2  
 12 N-N6ch.! RPxN  
 13 N-Q5ch. PxN  
 14 Q-K5 mate.

#### CHESS AT THE 1500 CLUB

#### LONESOME GEORGE

#### YE ED.

1. P-K4	P-K4
2. P-Q4	FxP
3. P-QB3	PxP
4. B-QB4	B-N5?
5. BxPch.	KxB
6. Q-N3ch.	P-Q4
7. QxB	N-QB3
8. QxBP	P-Q5
9. Q-B3ch.	N-B3
10 B-N5	R-K1
11 N-Q2	N-K4
12 Q-QR3	N-B5?
13 Q-N3	B-K3
14 NxN	P-KR3
15 B-R4	P-KN4
16 N-K5ch.?	K-N2
17 QxNP	R-QN1
18 QxRP	RxP
19 B-N3	NxP
20 N-B6?	NxB!
21 NxQ??	B-N6disch.
22 Resigns.	

#### FROM A TOURNEY PLAYED AROUND 1939 OR '40

#### O. ULVESTAD

#### S. RESHEVSKY

1. N-KB3	P-Q4
2. P-QB4	P-Q5
3. P-QN4	P-QB4
4. B-N2	P-KN3
5. P-Q3	B-N2
6. P-QR3	N-QB3
7. P-N5	N-K4
8. QN-Q2	Q-R4
9. NxN	BxN
10 P-N3	P-KR4
11 B-N2	P-R5
12 K-B1	Q-B2
13 K-N1	N-R3?
14 PxP!	N-B4
15 N-B3, NxP; 16 NxN, RxN; 17 P-R3,	
B-B4; 18 P-R4, Q-Q2; 19 Q-KB1, O-Q; 20	
P-R5, QR-R1; 21 P-R6, P-N3; 22 B-B6, Q-	
K3; 23 B-Q5, Q-B3; 24 B-N2, Q-N4; 25 B-	
B1, B-B5; 26 BxB, RxP; 27 R-K1, BxRP; 28	
P-K3, R-N5; 29 R-R2, Q-R5; 30 PxP, BxB;	
31 RxQ, B-B6ch.; 32 White resigned.	
(Wash. Open games next month)	

# Kronquist Wins Walla Walla Title, 6-0

The Walla Walla Valley Chess Championship was held October 11-13 in the evenings starting at 7:30 each evening. RAY KRONQUIST, Whitman College freshman, made a clean 6-0 sweep to win the championship in the 12-player, 6-round Swiss. KENNETH HARTWIG, one of the Walla Walla Valley's better players, finished second with 5-1, losing his second round encounter to Kronquist and winning the rest. JOHNNY NASH was the surprise of the tournament scoring 4-2 and finishing third. Nash surprised the heavy favorite, BELDON PEARSON, upsetting him in the second round. Pearson finished fourth with 3-3.

Kronquist won the first place cash prize and gets his name engraved on the perpetual trophy. Hartwig and Nash also won cash prizes.

Pos.	Name	City	-1-	-2-	-3-	-4-	-5-	-6-	Score	Coon's	Median
1.	Ray Kronquist (WW)		W-11	W-2	W-3	W-6	W-4	W-5	6-0	38.0	13
2.	Ken Hartwig (CP)		W-5	L-1	W-10	W-3	W-6	W-4	5-1	37.2	13
3.	Johnny Nash (WW)		W-9	W-4	L-1	L-2	W-7	W-6	4-2	33.8	14
4.	Beldon Pearson (D)		W-7	L-3	W-11	W-5	L-1	L-2	3-3	32.0	15
5.	Ed Nightengale (WW)		L-2	W-8	W-12	L-4	W-9	L-1	3-3	30.8	13
6.	Neal King (WW)		W-10	W-12	W-9	L-1	L-2	L-3	3-3	28.0	13
7.	Bruce Bayley (WW)		L-4	L-9	W-8	W-12	L-3	W-11	3-3	22.8	9
8.	Bill Krapfel (WW)		L-12	L-5	L-7	W-11	W-10	W-9	3-3	19.6	8
9.	Neil Hunter (WW)		L-3	W-7	L-6	W-10	L-5	L-8	2-4	25.6	12
10.	Joe Belanger (MF)		L-6	W-11	L-2	L-9	L-8	Bye	2-4	21.6	9
11.	Chet Bowerman (WW)		L-1	L-10	L-4	L-8	Bye	L-7	1-5	22.4	11
12.	John Anderson (WW)		W-8	L-6	L-5	L-7	Withdraws		1-5	16.8	11

CP-College Place, Wash. D-Dayton, Wash. MF-Milton Freewater, Ore. WW-Walla Walla

## WALLA WALLA DEFEATS HEPPNER, OREGON

On the evening of October 26th, the Walla Walla Valley Chess Club defeated the Heppner, Oregon chess team in a six-board match 11 to 1.

All of the news on this page was sent in by NEAL KING of Walla Walla. He says "The Wash. Chess Letter's getting better and better."

WALLA WALLA VALLEY 11.		HEPPNER, ORE. 1.	
Dr. Max Baumwell	2	John Snyder	0
Ray Kronquist	2	J. C. Winslow	0
Ken Hartwig	2	H. Tamblyn	0
Beldon Pearson	2	C. J. D. Bauman	0
Johnny Nash	1	Tom Driscoll	1
Bruce Bayley	2	Gordan Pratt	0

1957 WASHINGTON STATE OPEN  
Spokane, October 20-21, 1956

RANK	CONTESTANTS	HOME	-1-	-2-	-3-	-4-	-5-	-6-	W	L	D	SCORE	Med.*
1.	BISHOP, George	Sea.	W-13	W-9	W-22	D-2	D-4	W-5	4-0-2	5-1		14.5	
2.	CORNELIUS, Gordon	Spo.	W-19	W-17	W-5	D-1	D-3	D-6	3-0-3	4 $\frac{1}{2}$ -1 $\frac{1}{2}$		14.5	
3.	EDBERG, Robert	Tie.	D-16	W-13	W-15	W-6	D-2	D-4	3-0-3	4 $\frac{1}{2}$ -1 $\frac{1}{2}$		14.0*	
4.	PUPOLS, Viktors	Tac.	W-11	W-24	D-6	W-17	D-1	D-3	3-0-3	4 $\frac{1}{2}$ -1 $\frac{1}{2}$		14.0*	
5.	PEARSON, Beldon	Day.	W-12	W-10	L-2	W-16	W-8	L-1	4-2-0	4-2		15.0	
6.	MAKINS, Tom	Sea.	W-18	W-16	D-4	L-3	W-15	D-2	3-1-2	4-2		14.5	
7.	HIGGINSON, Bob	Spo.	L-15	W-11	W-9	L-8	W-18	W-12	4-2-0	4-2		11.5	
8.	DANIELS, Don	Spo.	L-17	W-18	W-14	W-7	L-5	W-15	4-2-0	4-2		11.0	
9.	EILMES, Don	Sea.	W-14	L-1	L-7	W-11	W-17	D-10	3-2-1	3 $\frac{1}{2}$ -2 $\frac{1}{2}$		12.5	
10.	KITTREDGE, Bob	Spo.	W-23	L-5	L-12	W-22	W-20	D-9	3-2-1	3 $\frac{1}{2}$ -2 $\frac{1}{2}$		10.0	
11.	BAILEY, L. W.	Spo.	L-4	L-7	W-21	L-9	W-24	W-17	3-3-0	3-3		12.5*	
12.	THOMPSON, Horton	Ken.	L-5	W-21	W-10	L-15	W-13	L-7	3-3-0	3-3		12.5*	
13.	BALL, Lemuel	L.L.	L-1	L-3	W-19	W-23	L-12	W-20	3-3-0	3-3		11.0	
14.	RICE, Ralph	Spo.	L-9	W-23	L-8	L-20	W-19	W-16	3-3-0	3-3		10.0	
15.	BARTO, John	G.F.	W-7	D-22	L-3	W-12	L-6	L-8	2-3-1	2 $\frac{1}{2}$ -3 $\frac{1}{2}$		15.0	
16.	PARSONS, Dick	Con.	D-3	L-6	W-24	L-5	W-22	L-14	2-3-1	2 $\frac{1}{2}$ -3 $\frac{1}{2}$		13.5	
17.	KIPERTS, Arvids	Spo.	W-8	L-2	W-20	L-4	L-9	L-11	2-4-0	2-4		14.5	
18.	CONWAY, Mike	Spo.	L-6	L-8	W-23	W-24	L-7	L-19	2-4-0	2-4		12.5	
19.	HARTMAN, John	Spo.	L-2	L-20	L-13	W-21	L-14	W-18	2-4-0	2-4		9.0	
20.	MORGAN, Bob	Spo.	L-22	W-19	L-17	W-14	L-10	L-13	2-4-0	2-4		8.5*	
21.	EILMES, Mary	Sea.	L-24	L-12	L-11	L-19	W-23	W-22	2-4-0	2-4		8.5*	
22.	PARKER, Dr. G.H.	Spo.	W-20	D-15	L-1	L-10	L-16	L-21	1-4-1	1 $\frac{1}{2}$ -4 $\frac{1}{2}$		11.0	
23.	ALBERTS, Dave	Spo.	L-10	L-14	L-18	L-13	L-21	W-24	1-5-0	1-5		10.0	
24.	CARTER, Rev. A.	Rit.	W-21	L-4	L-16	L-18	L-11	L-23	1-5-0	1-5		9.0	

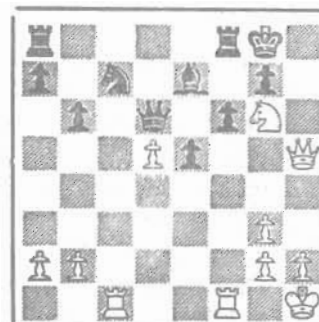
All forfeited games, won or lost, are underlined. There are no unbreakable ties. Edberg-Pupols remained tied under the Solkoff 21 to 21 but under S-B. Edberg came out ahead 15 to 14.25. With the Solkoff, Bailey edged Thompson 19 to 18.5. & Bob Morgan had 13.5 Solkoff points to Mary Eilme's 12.

Sea. - Seattle	Ken. - Kendricks, Idaho	Spo. - Spokane	L.L. - Liberty Lake, Wash.
Tac. - Tacoma	G.F. - Great Falls, Mont.	Tie. - Tieton	Con. - Centralia
	Day. - Dayton	Rit. - Ritzville	

The Financial Report

\$67.50 in Entry fees.  
\$36.00 in Banquet fees.  
\$103.50 Total Receipts.

\$103.50 Receipts  
\$103.03 Disbursements  
\$ .47 Confiscated by Tournament Director for wear and tear incurred!!!



WHITE TO PLAY  
Reshevsky v. Grigorieff, 1934  
Black resigned after R-B6

The first four finalists have officially and definitely qualified for the State Closed Tournament. Next highest ranking players will fill any vacancies. (EDBERG)

# CHess IN IDAHO

## A SUMMARY OF ACTIVITIES

DICK VANDENBURG is the President of the Idaho State Chess Association. He has recently started an Idaho chess bulletin. We have taken some Idaho news to pass along to our readers from this bulletin. As long as we continue to receive this bulletin, we will continue to pass along Idaho chess news to you. Oregon and British Columbia chess leaders please note - we will do the same for you. A little cooperation and we could change the title of "WASHINGTON CHESS LETTER" to "NORTHWEST CHESS LETTER".

### BUCKENDORF WINS IDAHO STATE CHESS TITLE

For the first time in history, an Idaho State player won the Idaho State Chess Tournament open to players every year from Idaho, Utah and Nevada. BUCKENDORF won 6 and lost his last game to IRV TAYLOR of Salt Lake. FRED BYRON of Portland was second with  $5\frac{1}{2}$ - $1\frac{1}{2}$ . He was named "open" champion. Second highest placing Idaho player was DON MURPHY of Twin Falls who was 8th. The first ten placings were as follows:

1. Glen Buckendorf, Buhl	6 - 1
2. Fred Byron, Portland	$5\frac{1}{2}$ - $1\frac{1}{2}$
3. Ad Rietdyk, Reno	5 - 2
4. Irvin Taylor, Salt Lake	5 - 2
5. K. R. Jones, Reno	$4\frac{1}{2}$ - $2\frac{1}{2}$
6. Maurice Gedance, Las Vegas	$4\frac{1}{2}$ - $2\frac{1}{2}$
7. Horn, Salt Lake	4 - 3
8. Don Murphy, Twin Falls	4 - 3
9. Harold Hughart, Boise	$3\frac{1}{2}$ - $3\frac{1}{2}$
10 Dr. David Groenig, Caldwell	$3\frac{1}{2}$ - $3\frac{1}{2}$

Others competing included John Kurdeka and Lloyd Kimpton, Twin Falls; Bob Campbell, Rupert; Larry Walton, Burley; C. H. Stewart, Dick Vandenburg and A.L. Harle, Boise; Max Wernstrom, Gooding; Ray Smith, Reno; and Stacy Samson, Kimberly.

The tourney was held at Twin Falls, on March 2, 3, and 4, at the Rogerson Hotel. Lloyd Kimpton directed. Alongside the tourney each year is a banquet where the annual business meeting is held. At this meeting the following officers were elected: DICK VANDENBURG, Pres., JERRY STANKE (Nampa), Sec.-Treas., BOB CAMPBELL and JOHN KURDEKA, committeemen.

After a 3 year lapse, the annual Idaho vs. Utah match was revived. The ten board match was played in Salt Lake, and

won by Utah 14 to 6. The series is now even at 2 to 2. Saturday night Utah took an 8 to 2 lead and on the following morning Utah won again by 6 to 4. The second games played in Salt Lake's Liberty Park were followed by Utah feting Idaho players & their wives to box lunches. Players from each state were matched in order of estimated strength and played two games with their opponents--one Saturday night and the other on Sunday morning. The results:

UTAH	14	IDAHO	6
1. Farrell Clark	2	G. Buckendorf	0
2. Irv. Taylor	2	D. Vandenburg	0
3. Fred Docchal	0	C.H. Stewart	2
4. Garrit Zwoers	1	L. Kimpton	1
5. G. Chappuis	1	Dean Blair	1
6. Stan Hunt	2	B. Campbell	0
7. S. Teitelbaum	2	A.L. Harle	0
8. Dick Heilbut	2	R.K. Hart	0
9. Richard Owen	2	Stacy Samson	0
10 John Archbold	0	Henry Chaney	2

Idaho players look forward to the next match in the series which will be held in Idaho.

### INTER CLUB MATCHES

Rupert visited Pocatello, losing 2-12, but won over Pocatello 7-5 when Pocatello returned the visit. Boise won at home against Nampa  $4\frac{1}{2}$ - $3\frac{1}{2}$  but lost when they visited Nampa 3-5.

### IDAHO STATE TOURNEY

The annual State Tournament is being held in Boise this coming year sometime in late February, or late in winter or early March.



# MORE INTRODUCTORY NOTES—



## NEXT MONTH

### ROUND-UP OF RESULTS IN OTHER STATES

NEW YORK: A.E. Santasiere 8-1, over Collins and Rankis, both with 7-2.

ALABAMA (27 players): Hayes with  $6\frac{1}{2}$ - $\frac{1}{2}$  ahead of Deleanu, 6-1, Peyton, Work, Karch.

NEW JERSEY (74 players): Hearst scored  $6\frac{1}{2}$ - $\frac{1}{2}$ , Blonarovych 6-1, Popovych  $5\frac{1}{2}$ -1 $\frac{1}{2}$ .

ATLANTIC COAST (16 players): Dr. Stern 6-1, Romanenko 6-1.

ARIZONA (24 players): Norman James 6-0, McClellan  $4\frac{1}{2}$ -1 $\frac{1}{2}$ , Christman 4-2.

FLORIDA (34 players): A guero  $6\frac{1}{2}$ - $\frac{1}{2}$ , Hartleb 6-1, Sillis 5-2, Carlyle 5-2.

WEST VIRGINIA (14 players): Don Eurdick and Charles Morgan tied with 5-1.

PANHANDLE COUNTRY (42 players): Robert Wright  $4\frac{1}{2}$ - $\frac{1}{2}$ , Dale Ruth  $4\frac{1}{2}$ - $\frac{1}{2}$ .

NORTH CAROLINA (20 players): C. Crittenden  $5\frac{1}{2}$ - $\frac{1}{2}$ , Dr. Jenkins  $5\frac{1}{2}$ - $\frac{1}{2}$ .

SOUTHWESTERN (69 players): Ken Smith  $6\frac{1}{2}$ - $\frac{1}{2}$ , Coles, Payne, Bills, all  $5\frac{1}{2}$ -1 $\frac{1}{2}$ .

NEW ENGLAND: John Curdo  $5\frac{1}{2}$ - $\frac{1}{2}$ , Martin 5-1, Luesman 5-1.

LOUISIANA (47 players): Irene Vines won against players from five States.

PENNSYLVANIA (54 players): Hesse 6-1, Hamburger  $5\frac{1}{2}$ -1 $\frac{1}{2}$ , Gutekunst 5-2.

IOWA (15 players): Roecker 7-0, Myers 6-1, Dr. Davis 5-2.

OHIO (40 players): Poschel  $6\frac{1}{2}$ - $\frac{1}{2}$ , McCready 6-1, Anderson, Heising, Mann.

COLORADO: Hillinger, Phil Smith, James McCormick, Robert McGregor.

-18-

SOME VERY NEW SLAV DEFENSE IDEAS WILL  
BE PRESENTED BY BISHOP NEXT MONTH

# CHES AROUND THE WORLD

## BY DON EILMES

Sammy Reshevsky maintained a commanding lead in the Rosenwald Trophy Tournament, at Manhattan Chess Club, in New York, with a 30-move draw with Seidman, October 21. The standings after 9 rounds were:



"Well, if I had to be shipwrecked, I'm sure glad it was with a chess player."

Reshevsky	7-2
Bisguier	5½-2½
Feuerstein	5½-3½
Mednis	5-4
Turner	5-4
Byrne	4½-3½
Fischer	4-5
Pavey	4-5
Bernstein	3-5
Seidman	3-6

### INTERNATIONAL TEAM MATCH

USSR	31-13
Hungary	26½-17½
Yugoslavia	26½-17½
Argentina	23-21
Bulgaria	22-22
W. Germany	22-22
Czechoslovakia	20½-23½
England	20-24
Romania	19-25

After 4 rounds of the Alekhine Memorial Chess Tournament, in Moscow, Russia, Mark Taimanov, Russia's national champion, is leading with a score of 3½-½, according to a report in the New York Times. He defeated David Bronstein in the opening round. The world champion, Mikhail Botvinnik is second among the 16 players, with 3 points. Tied at 2½-1½ are Bronstein, Najdorf of Argentina, Pachman of Czechoslovakia, Szabo of Hungary, Smyslov of Russia, and Stahlberg of Sweden.

The U.S. is not represented in the Alekhine Memorial. Reshevsky was invited to play, but stipulated a fee of \$2,000, which was refused by the Soviets. However, Reshevsky's match with Bronstein looks like it is coming off in December.

A memorial tournament to W. Steinitz took place in Marianske, Lazne, and Prague, during the past year, and was fittingly won by a Czechoslovak, the talented young grandmaster, Miroslav Filip. Although the USSR was not represented by what might be termed the deluxe grade of their grandmasters, their players occupied the second and third places.

The match for the world championship between Botvinnik and Smyslov, will begin late in March 1957, at Moscow. The present champion's second will be Flohr, and Smyslov has chosen Lilienthal for his second.

Jack Nourse, Washington State's own Ambassador to the Chess Centers of the World, reports from Rome, Italy, that a uniformed doorkeeper at the Rome Chess Club denied him admittance without a card. "Some difference to the chess clubs in the States. I might expect to get blackballed when they know me, but to be refused entrance where I am a stranger is intolerable," wrote Jack.

# POSTAL CHESS

R.R. MERK  
POSTAL CHESS EDITOR

1026 E 71 SEATTLE 15

August 16, 1956			Points	Oct. 15, 1956			Points
55A-6A	Cairncross	1 Allyn, L	0 44	56B-2B	Sween	1 Skarston	0 63
55A-6B	Cairncross	1 Allyn, L	0 44	Oct. 16, 1956			
Sept. 10, 1956				56A-1B	Wade	1 Howard	0 44
56B-4A	Hamilton	1 Haynes	0 46	Oct. 17, 1956			
Sept. 18, 1956				55A-6A	Knapp	1 Cairncross	0 56
56B-3A	Lee	1 McBride	0 41	Knapp	1 Carter	0 58	
56B-3B	Lee	1 McBride	0 41	Oct. 22, 1956			
Sept. 27, 1956				56B-7A	VanNatta	1 Notter	0 40
56B-1B	Laine	1 Edberg, A.Y.O	52	56B-7B	VanNatta	1 Notter	0 40
Sept. 29, 1956				56B-5B	VanNatta	1 Tresidder	0 66
56B-4A	Hamilton	1 Adamson	0 22	56B-4A	Squire	1 Adamson	0 28
Sept. 30, 1956				Oct. 23, 1956			
56B-3A	Lee	1 Youngman	0 46	56A-1B	Edberg, R.E.	$\frac{1}{2}$ Carter	$\frac{1}{2}$ 22
Oct. 1, 1956				Oct. 25, 1956			
53A-3A	Howard	1 Roberts	0 44	55A-7B	Carter	$\frac{1}{2}$ Bever	$\frac{1}{2}$ 22
56B-2A	Parsons	1 Skarston	0 30	Oct. 26, 1956			
Oct. 5, 1956				56A-3A	Husby	1 Parsons	0 109
56B-2A	Dickson	1 Parsons	0 72	56B-4B	Miltmore	1 Adamson	0 44
Oct. 7, 1956				Oct. 27, 1956			
55A-6B	Cairncross	1 Knapp	0 54	56B-6A	Brookshire	1 Rogers	0 30
Oct. 10, 1956				56B-6B	Brookshire	1 Rogers	0 30
56B-3A	Squire	1 McBride	0 36	56B-6A	Brookshire	1 Jacobson	0 26
56B-3B	Squire	1 McBride	0 36	56B-6B	Brookshire	1 Jacobson	0 26
56B-4A	Hamilton	1 Squire	0 43	56B-6A	Brookshire	1 Notter	0 18
56B-4B	Hamilton	1 Squire	0 43	56B-7A	Brookshire	1 Notter	0 18
Oct. 15, 1956				56B-7B	Brookshire	1 Notter	0 18
55B-3A	Waldron	1 Adamson	0 62	Oct. 31, 1956			
Oct. 12, 1956				56A-1B	Wade	$\frac{1}{2}$ Baron	$\frac{1}{2}$ 16
56B-1A	Youngman	1 Skoglund	0 62				

Sections completed. Winner of each section is credited with 6 mo. subscription.

53A-3A		53A-3B		Points	55B-3A		55B-3B		Points
Almond	x 0 1 1 1	x 1 1 1 1		7	Parsons	x 1 1 1 1	x $\frac{1}{2}$ 1 1 1		7 $\frac{1}{2}$
Howard	1 x 0 $\frac{1}{2}$ 1	0 x 1 1 1		5 $\frac{1}{2}$	Sween	0 x 1 1 1	$\frac{1}{2}$ x 1 1 1		6 $\frac{1}{2}$
Bever	0 1 x 0 1	0 0 x 1 1		4	Waldron	0 0 x 1 1	0 0 x 0 0		2
Coubrough	0 $\frac{1}{2}$ 1 x 1	0 0 0 x 1		3 $\frac{1}{2}$	Youngman	0 0 0 x 1	0 1 1 x 0		2
Roberts	0 0 0 0 x	0 0 0 0 x		0	Adamson	0 0 0 0 x	0 0 1 1 x		2

55A-6A		55A-6B		
Parsons	x 1 1 1 1	x 1 1 1 1		8
Carter	0 x 0 1 1	0 x 1 0 1		4
Knapp	0 1 x 1 1	0 0 x 0 1		4
Cairncross	0 0 0 x 1	0 1 1 x 1		4
L. Allyn	0 0 0 0 x	0 0 0 0 x		0

The cost is none  
Tis lots of fun  
I pay no compensation  
It costs me less  
For playing chess  
Than any recreation.

Contributed by  
W.O. Nichols.

The big upset of the year occurred when HUSBY threw PARSONS for a loss of 109 points. Also DICKSON came across with an assist by tossing PARSONS for a loss of 72 points. And that is the way it goes in chess, one never knows what that wary opponent has up his sleeve in the way of a surprise. However Parsons did not do so bad, as you will note above that he was undefeated in section 55A-6A and 6B and also won section 55B-3A and 3B with a score of 7 $\frac{1}{2}$ , thereby winning a year's extension to his subscription.

There has been a considerable change in the leaders in the "B" division, with Brookshire, Sween, Phillips and Hamilton now being the top four. Brookshire came to the top by way of forfeitures by Rogers and Jacobson, but don't let that fool you about his ability to stay up there. We suspect that the forfeitures were just resignations because of losing positions.

We are growing in members every month. Keep the names of prospects coming.

## POSTAL CHESS

POSTAL CHESS IS A GOOD WAY TO IMPROVE YOUR GAME. You can take enough time to thoroughly study each move. You can enter against any strength of competition and game results will soon give your rating its proper value.

AN ADVANTAGE OF PLAYING NORTHWEST PLAYERS is that the games proceed smoothly with overnight mail delivery. Ratings are adjusted and published each month.

EACH PLAYER IN A FIVE-MAN SECTION PLAYS TWO GAMES WITH EACH OF THE OTHERS.

THE ENTRY IS 50¢. A 6-MONTH SUBSCRIPTION EXTENSION IS THE PRIZE.

COMPLETE RULES ARE SENT.

**SEND ENTRY TO POSTAL EDITOR**

Return postage guaranteed  
Form 3547 requested.

WASHINGTON CHESS LETTER  
1026 E. 71st ST. SEATTLE, 15, WASH.

B. B. Strachan  
5103 N.E. 15 Ave  
Portland 11, Ore

04/57



## POSTAL CHESS RATINGS

### "A" Division

Baron	1726
Mage	1668
Coubrough	1602
Wade	1600
Weischer	1580
Dickson	1579
Kaffenberger	1570
Parsons	1545
Bever	1528
Edberg, R.E.	1504
Luters	1472
Weaver	1466
Howard	1438
Skarsten	1404
Knapp	1403
Witthans	1400
Carter	1353
Cairncross	1297
Husby	1218

### "B" Division

Brookshire	1449
Sween	1405
Phillips	1354
Hamilton	1339
Roberts, Don	1330
Van Netta	1280
Leine	1274
Merk	1263
McDonald	1252
Tresidder	1227
Edberg, A.Y.	1186
Spencer	1155
Nichols	1149
Lyberger	1136
Raleigh	1134
Squire	1120
Spatz	1105
Haynes	1090
Leo	1088
Gordon	1078
Benson	1050
Gemar	1050
Mills	1050
Pifley	1050
Watson	1050
Rogers	1030
Younbman	1021
Skoglund	1020
Aldridge	1010
Jacobson	998
Miltmore	954
Nelson	952
Notter	906
Waynor	906
McBride	896
Skinner	894
Waldron	880
Adamsen	803
Smith	733