



NORTHWEST CHESS

Washington Chess Federation
Oregon Chess Federation

July 2008
708 \$3.95

926-0901A
MIKE MACGREGOR



Radu Roua Reprises Role

comes from the
ational Open
& the Keres
Memorial
And More!



*New and previous Oregon Champion
Radu Roua*

Northwest Chess

July 2008, Volume 62,7 Issue 720
ISSN Publication 0146-6941

Published monthly by the Northwest Chess Board. Office of record: 2420 S 137 St, Seattle WA 98168.

POSTMASTER: Send Address Changes to: Northwest Chess, PO Box 84746, Seattle WA 98124-6046.

Periodicals Postage Paid at Seattle, WA

USPS periodicals postage permit number (0422-390)

NWC Staff

Editor: Fred Kleist
Games Editor: FM Chuck Schulien
Assist Editor: Nat Koons
Printer: Snohomish Publishing
Business Manager: Eric Holcomb

Board Representatives

Oregon: Dave Yoshinaga
Washington: Geoff Gale & Ricky Selzler

Entire contents copyright 2008 by Northwest Chess. All rights reserved. Published opinions are those of the contributors and do not necessarily reflect the views of the editor or the Northwest Chess Board.

Advertising Rates

Display ads run \$150 for a full page, \$100 for 1/2 page ads; \$85 for a half-page, \$60 for 1/4 page; \$30 for a quarter page, \$20 for an eighth of a page, and \$10 for a business card-size ad. Add \$10 if the ad is not copy ready and the staff must do layout work. A 15% discount is available for two or more consecutive ads of the same size.

Event Announcement Rates

Each appearance in *Event Announcements* costs \$20. Payment is required before publication. Enclose \$2 additional if an invoice is required--this is a mandatory service charge.

Advertising & Copy Deadline

Please get your ads and submissions in by the 10th of the month for the items to appear in the next issue (e.g., no later than Feb. 10 for the Mar. issue). The editor cannot guarantee that late submissions will appear in the desired issue.

Submit all ads and payments to:

Business Manager, Northwest Chess
1900 NE Third St, Ste 106-361
Bend WA 97701-3889
Eric@Holcomb.com

Submissions

Hey folks! The editor depends on YOU to make this magazine vibrant and exciting. I need your games, photographs, thoughts, and ideas. This magazine has a great tradition and I hope people will contribute enthusiastically. You can send me your materials via U.S. mail or via e-mail:

Northwest Chess
Fred Kleist, Editor
2420 S. 137th Street
Seattle WA 98168
NWCeditor@cs.com
206-242-7076

If you'd like your games annotated by a senior master, send them to our Games Editor:

FM Chuck Schulien
cschess@hotmail.com

Subscription Information

Northwest Chess is a benefit of membership in either the Oregon or Washington Chess Federations. Adult dues are \$25; Junior dues (under 20) are \$17 (or \$10 for six months). Please send dues, along with pertinent information to:

Business Manager
Northwest Chess
Eric Holcomb
1900 NE Third St, Ste 106-361
Bend WA 97701-3889
Eric@Holcomb.com
http://www.nwchess.com

Northwest Grand Prix Administrator

Murlin Varner
13329 208 Ave NE
Woodinville WA 98072
MEVjr54@yahoo.com
425-882-0102

Oregon Chess Federation

President
Dave Yoshinaga
971-404-5251
dave@kdtonline.com

Vice President
Mike Terrill
503-580-9187
pflotus@yahoo.com

Secretary
Carl Haessler
ssmith6154@aol.com

Treasurer
Mike Morris
mikejmorris@earthlink.net

Tournament Coordinator
Peter Prochaska
503-504-5756
pete@chessodyssey.com

Scholastic Coordinator
Taylor Bailey
503-282-6796
cosmos24@gmail.com

Director-at-Large
Marcus Robinson
503-245-1204
mprscorp@comcast.net

Washington Chess Federation

President
Duane Polich
206-852-3096
duane@combonate.com

Vice President
Joshua Sinanan
jsinanan@hmc.edu

Secretary
Gary Dorfner
253-535-2536
ggarychess@aol.com

Treasurer
Robert J. Allen
253-761-1288
allenrobertj@msn.com

Tournament Coordinator
Dan Mathews
425-778-7482
dthmathews@hotmail.com

Scholastic Coordinator
David Hendricks
425-868-3881
davidhendricks@comcast.net

NW Chess Board Member
Mark Ryan
mark.ryan@translation.net

Greetings from the Editor

No Washington Open games have appeared in my inbox as yet. But, apparently, Drayton Harrison made good use of his time, for he had an excellent result at the World Open. Perhaps there'll be a short report on that in August. I have slightly over two pages for next issue; so please send some material!

Did you play an interesting game? Send it in to the magazine, annotated or not! Did you go to a tourney? Write a report! Did you like your newest chess book/software, or just hate it? Let the rest of us know about it by writing a review!

Of course, any other articles or pictures that you contribute will be more than welcome, though pictures generally have to fit in with some article.

Best Wishes,
Frederick K. Kleist

Thanks to C. Kleist for proofreading.



Editor's Desk

Northwest Chess Knights

Northwest Chess Knight donors will be listed in the magazine for a period of one year following receipt of donation. Please consider making a donation today to help Northwest Chess!

King: \$1000+
Queen: \$500-\$999
Rook: \$250-\$499
Bishop: \$100-\$249
Knight: \$50-\$99
Pawn: \$15-\$49

Current Patrons

King: Cinthia McBride, Kent McNall

Queen:

Rook: Nat Koons, Michael Wang

Bishop: Ralph Hall, Russell Miller, Michael Omori family, Boyd Schorzman

Knight: Robert Brewster, Steve Buck, Darby Monahan

Pawn: Mark James, Gene Milener

Contributions can be sent to the Northwest Chess Business Manager, and are greatly appreciated!

Washington Chess Letter

60 Years Ago, 50 Years Ago

by Russell Miller

July 1948

Lawrence W. Taro of Everett, WA put out an eleven-page issue of the *Washington Chess Letter* as Editor. One finds the crosstable of the twelve-player Puget Sound Open in this issue. Jim Schmitt, a 19 year old from Portland, Oregon, won the event 6-0. He won \$15 in cash. Second was Carroll Crain of Tacoma at 5-1. The event was held May 30-31 at the Tacoma Chess Club site in the Carlton Hotel, 17th and Commerce in Tacoma.

The Washington Chess Federation annual meeting was held during the tournament. Officers elected were: President—Lawrence Taro, Vice-President—John Nourse, Secretary—Richard Allen, Treasurer—W. H. Raleigh. Discussion centered around the Chess International Match with British Columbia to be held in Everett on June 27.

There was a report on the Puget Sound League. The Tacoma CC won the event with eight matches won, none lost. The leading player of the season was Collins of Tacoma 13.5-0.5. Richard Allen's column "Fundamental Chess Strategy and Tactics, Part One" appeared, filling one page. Several games by the Puget Sound Open winner were printed. Taro was the top player on the postal rating list.

July 1958

This was issue 128 of the *WCL*. The Seattle Seafair announcement was on page two of Editor Dan Wade's work. The tournament site was to be the Seattle YMCA at 4th and Madison in downtown Seattle. Six rounds were to be played over two days at a time control of 40/90. The entry fee was all of \$3 with a first prize of at least \$25. The annual International Match between Washington and British Columbia was announced for August 10th.

On June 22, eight players from BC had come to Olaf Ulvestad's Chess Center for a match with Seattle-area players. Seattle won 5.5-2.5. Elmars Zemgalis defeated Elod Macskasy, Ulvestad was the victor over Don Murray and Jim McCormick beat Jack Patty. Charles Griffiths lost to Frank May, G.S.G. Patterson downed Gerhard Neufahrt, Dan Wade lost to Jack Taylor, Viesturs Seglins drew with George Zorkowitz and Dr. A. A. Murray beat Kaj Nielson. Some of the game scores were given.

Continued on page 14

Northwest Chess

July 2008

Washington Chess Letter: 60, 50 Years Ago
page 3

Radu Roua Repeats as Oregon Champion
page 4

Tournament Ads
pages 7, 22, 23

Games from the National Open
page 15

Hwa Wins WA Polgar Qualifier
page 16

Games from the Keres Memorial
page 18

Tacoma CC Report
page 19

Roua Wins Harmon Memorial
page 20

Northwest Organizer Grand Prix
page 20

Northwest Chess Calendar of Upcoming Events
back cover

On the Cover: New and previous Oregon Champion Radu Roua poses outside of the Portland Chess Club in April 2007. *Photo courtesy of Mike Morris*

Radu Repeats

by Neil Dale

2007 Oregon Champion NM Radu Roua successfully defended his title in the ten-player round-robin Oregon Invitational Championship, held at the Portland Chess Club over two weekends from June 13th through June 22nd. It was a hard-fought competition where no contestant went without a loss. Due to the luck of the draw, the game between the two mathematically eligible for the title, Roua and NM Landon Brownell, happened in the last round. Just like in a Swiss, huh?

The defending champion only needed a draw to defend his title and that is how the contest ended. Thus, Roua finished with seven points. He lost only to FM Nick Raptis, while also drawing with Mike Janniro. Raptis and Brownell shared second/third with 6½ points apiece. Brownell suffered his only loss in a game against NM James Bricher and Raptis was nicked by Brownell.

Clear fourth place with five points went to one of the youngest competitors, Raleigh Foster. Fifth/sixth places were shared by NM Bricher and FM Corey Russell with 4½ each. Another young player, and first-time competitor in this event, Daniel Gay managed five draws in this tough competition. Grisha Alpernas and Neil Dale shared the directing duties.

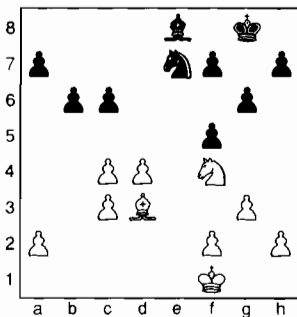
Alekhine's Defense

Gunther Jacobi (1940)

NM James Bricher (2244)

Portland, Oregon Championship (1) 2008

1. d4 c5 2. e4 f6 3. e5 d4 4. exf6 dxc3 5. bxc3 exf6 6. f3 e6 7. c4 O-O 8. O-O b6 9. d4 e7 10. e1 d7 11. h4 g6 12. h6 e8 13. g4 f8 14. e2 d7 15. xd7 e7 16. e5 e8 xe1+ 17. xe1 d8 18. g3 b8 19. g2 e6 20. e3 d3 21. e8+ e8 22. c4 e6 23. c3 f5 24. f4 xf4 25. xf4 e7 26. f1 c6



27. e1 e8 28. e2 f8 29. e3 e7 30. h4 e7 31. e2 d6 32. f3 e6 33. d5 e7 34. e4 c5+ 35. e3 c8 36. g2 xc4 37. e2 d6 38. a4 e7 39. c4 e8 40. f4 f6 41. f3 e4 42. e4 f4 43. e3 a6 44. e3 e6 45. g4 b5 46. axb5 axb5 47. g5 bxc4 48. xc4 e6+ 49. e3 c3 e7 50. e4 e8 51. e3 e7 52. g4 e6 53. e3 e7 54. e4 e6 55. e3 e6 56. e3 e6

57. e3 c3 f6 58. e2 f6 59. hxg5 e7 60. g4 g7 61. e3 e8 62. e5 f5 63. e2 h5 64. gxh6+ e6 65. e3 0-1

Benko Gambit

NM Radu Roua (2209)

FM Corey Russell (2205)

Portland, Oregon Championship (1) 2008

Annotations by FM Corey Russell

1. d4 f6 2. c4 c5 3. d5 b5 4. cxb5 a6 5. b6 e7 6. e3 g6 7. a4 a5

I prefer to play ...a5, as it opens a6 for my pieces and denies White the a4-square for his pieces. White's a4-a5 has a cramping effect on Black's game.

8. e4 d6 9. e5 b5+ e7 10. f3 e7 11. d2 O-O 12. e4 e8

This protects my a5-pawn, enabling ...e6.

13. O-O e6 14. h3

This is played primarily so that White need not worry about ...h5 after e6, as h2 is a fine retreat square.

14... h4 15. e4 e5 16. axb5 d7 17. e1 b6 18. e6

Had he played 18. e5, I planned 18... e5 19. e5 e6. Though White is still fine, I was happy with the position, for Black

will play ...e6 with threats on c3 plus a possible ...d3 fork.

18... e6 19. e2 c4 20. xc4 f8

Not 20... e2??, as 21. e4 wins a piece for White.

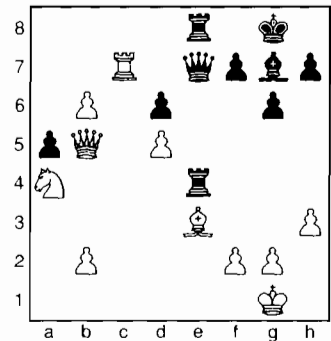
21. e3 e7 22. e3 e7 23. e4!?

White didn't want to play moves like 23. e2, since Black has 23... e2! with threat on c3 again.

23... e1 24. e1 e8!?

Dubious. 24... e8 is more accurate. An incursion of a White Rook at c6 is very dangerous; so Black should have opposed the file as long as possible.

25. e1 c1 e6 26. e6 exd5 27. exd5 e4 28. b6 e8 29. e5 e7 30. e7



30... e4??



THE CHESS HOUSE

Serving the chess community since 1972

your chess sets and equipment store



chess sets, combos, clocks
electronic chess, software
books, dvd's, teaching supplies
awards, chess for education
accessories, boards, pieces

www.ChessHouse.com
1-800-348-4749

Black is dead lost now. Instead, 30...♖e5 is a better try. For example, White intended 31.b7 ♖xe3 32.♗xe8 ♗xe8 33.♖c8, then Black can follow up with 33...♖e8+ 34.♔h2 ♕e5+ 35.g3 ♔g7!! (Gunther Jacobi). The point is that if White queens, then Black has ...♗xa4, but if White instead takes the Queen with 36.♖xe8, then 36...♕xe5+ 37.fxg3 ♖xe8 38.♔b6 ♖b8 and the b-pawn falls. Black is actually winning!

White must play 36.♔h1!, the winning move. This allows White to recapture on e3 with the pawn and then follow up with ♗f1, defending his King by the threat on f7. This permits the b-pawn to win the game.

31.b7 ♖xe3 32.fxe3 ♗e1+ 33.♗f1 ♗xe3+ 34.♔h1 ♕d4 35.♗xf7+ 1-0

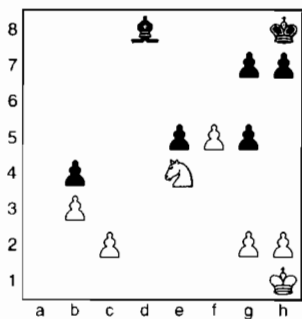
Sicilian Najdorf

Raleigh Foster (1977)

Daniel Gay (1980)

Portland, Oregon Championship (1) 2008

1.e4 c5 2.♔c3 a6 3.♔f3 d6 4.d4 cxd4 5.♔xd4 ♔f6 6.♕g5 e6 7.f4 ♗c7 8.♗f3 b5 9.♕d3 b4 10.♔ce2 ♔bd7 11.O-O ♕b7 12.f5 e5 13.♔b3 d5 14.♔g3 ♖c8 15.exd5 ♕xd5 16.♗e2 a5 17.♖ad1 a4 18.♔d2 ♕c5+ 19.♔h1 O-O 20.b3 axb3 21.axb3 ♖fe8 22.♔de4 ♔xe4 23.♕xe4 ♕xe4 24.♗xe4 f6 25.♗d5+ ♔h8 26.♗xd7 ♗xd7 27.♖xd7 fxg5 28.♔e4 ♕e7 29.♖a1 ♖cd8 30.♖aa7 ♖xd7 31.♖xd7 ♖d8 32.♖xd8+ ♕xd8



33.g4 ♔g8 34.♔g2 ♔f7 35.♔f3 g6 36.fxg6+ ♔xg6 37.♔c5 ♔f6 38.♔e4 ♕e7 39.♔d7+ ♔e6 40.♔xe5 ♕d6 41.♔f3 ♕e7 42.♔d4+ ♔f6 43.♔d5 ♕f8 44.♔e2 ♔g6 45.c4 bxc3 46.♔xc3 h5 47.h3 hxg4 48.hxg4 ♕b4 49.♔e4 ♕a3 50.♔e6 ♕b4 51.♔f6 ♕d2 52.♔d5 ♔g7 53.b4 ♔f8 54.♔d7 ♔f7 55.b5 ♕e1 56.b6 ♕f2 57.b7 ♕a7 58.♔e7 ♕b8 59.♔c6 ♕g3 60.b8=♗ ♕xb8 61.♔xb8 ♔f6 62.♔d6 1-0

Catalan

Mike Janniro (2030)

FM Nick Raptis (2305)

Portland, Oregon Championship (1) 2008

1.c4 ♔f6 2.♔f3 c6 3.g3 d5 4.b3 ♕g4 5.♗c2 ♔bd7 6.♕b2 e6 7.♕g2 ♕d6 8.O-O-O 9.d4 a5 10.♔bd2 ♕f5 11.♗c1 h6 12.♔e5 a4 13.♖e1 ♗c7 14.♔xd7 ♗xd7 15.c5 ♕c7 16.f3 ♕g6 17.b4 ♖fe8 18.e4 dxe4 19.fxe4 e5 20.dxe5 ♕xe5 21.♔c4 ♕d4+ 22.♔h1 ♔xe4 23.♖xe4 ♕xe4 24.♕xe4 ♖xe4 25.♔b6 ♗f5 26.♕xd4 ♖d8 27.♕xg7 ♗f3+ 28.♔g1 ♖e2 29.♗f1 ♗e3+ 30.♔h1 ♖dd2 0-1

French Winawer

Michael Morris (2044)

NM Landon Brownell (2249)

Portland, Oregon Championship (1) 2008

1.e4 e6 2.d4 d5 3.♔c3 ♕b4 4.e5 c5 5.a3 ♕xc3+ 6.bxc3 ♔e7 7.♗g4 O-O 8.♕d3 ♔bc6 9.♗h5 ♔g6 10.♔f3 ♗c7 11.♕e3 c4 12.♕xg6 fxg6 13.♗g4 ♕d7 14.h4 ♖f5 15.h5 gxh5 16.♖xh5 ♖xh5 17.♗xh5 ♕e8 18.♗h3 ♔d8 19.♔d2 ♕g6 20.♔h4 ♗f7 21.♖b1 b6 22.g4 ♔c6 23.f4 ♖f8 24.♖f1 ♔e7 25.♔xg6 ♗xg6 26.a4 h5 27.gxh5 ♗f5 28.♖h1 ♔f7 29.♗g2 ♖h8 30.♗g5 ♗e4 31.♖h3 ♖h6 32.f5 ♔xf5 33.♗g1 ♔xe3 34.♗xe3 ♗g4 35.♖f3+ ♔g8 36.♗f2 ♗g5+ 37.♔e2 ♗xh5 38.♔e3 ♗g5+ 39.♔e2 ♗c1 40.♖f8+ ♔h7 41.♔f3 ♖h3+ 42.♔g4 ♗h6 43.♖a8 ♗h5+ 44.♔f4 g5 mate

Round Two

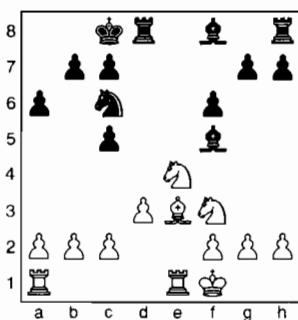
Ruy Lopez Exchange

Daniel Gay (1980, 0.0)

NM Radu Roua (2209, 1.0)

Portland, Oregon Championship (2) 2008

1.e4 e5 2.♔f3 ♔c6 3.♕b5 a6 4.♕xc6 dxc6 5.♔xe5 ♗d4 6.♔f3 ♗xe4+ 7.♗e2 ♗xe2+ 8.♔xe2 ♕f5 9.d3 O-O-O 10.♖e1 f6 11.♔f1 c5 12.♔bd2 ♔e7 13.♔e4 ♔c6 14.♕e3



14...c4 15.♔h4 ♕g6 16.♔xg6 hxg6 17.dxc4 ♖xh2 18.a3 ♔d4 19.♕xd4 ♖xd4 20.♔g1 ♖h4 21.♔c3 ♕d6 22.b3 ♕h2+ 23.♔f1 ♕e5 24.♖ad1 ♖h1+ 25.♔e2 ♖xe1+ 26.♔xe1 ♖g4 27.♔d5 ♕d6 28.♔e3 ♖e4 29.a4 g5 30.♔f1 ♕c5 31.♔d5 c6 32.♔c3 ♖f4 33.f3 f5 34.♔e2 ♖h4 35.♔c1 g4 36.♔d3 gxf3 37.gxf3 ♖h1+ 38.♔e2 ♖h2+ 39.♔e1 ♕e3 40.c3 g5 41.♔e5 ♕f2+ 42.♔f1 ♕g3 43.♔f7 ♖f2+ 44.♔g1 ♖xf3 45.♔xg5 ♖xc3 46.♔e6 ♕c7 47.♖f1 f4 48.♖b1 ♕b6+ 49.♔g2 ♖g3+ 50.♔h2 ♖g6 51.c5 ♕a7 52.♖e1 f3 53.♔f4 f2 54.♖f1 ♕b8 55.♖xf2 ♖g4 0-1

Sicilian Najdorf

FM Corey Russell (2205, 0.0)

Michael Morris (2044, 0.0)

Portland, Oregon Championship (2) 2008

Annotations by FM Corey Russell

1.e4 c5 2.♔f3 d6 3.d4 cxd4 4.♔xd4 ♔f6 5.♔c3 a6 6.♕g5 e6 7.♗d3 b5 8.a3 ♔bd7 9.O-O-O ♕b7 10.f3

Black was threatening ...♔c5; so it seemed prudent to shore up the defense of the e4-pawn.

10...♕e7 11.h4

This move defends the Bishop. Sometimes there are tricks if White's Queen on is on a square where she can be threatened by moving the Black King Knight. With the Bishop protected, there is none of that. Also, White doesn't mind ...h6, as, after ♕e3, he can play g4-g5 with accelerated line-opening on the kingside.

11...O-O 12.g4 ♖c8 13.♕e2 ♔e5 14.♗e3 ♔c4 15.♕xc4 ♖xc4 16.♕xf6 ♕xf6 17.g5 ♕xd4 18.♖xd4 ♗b6 19.♖d3 ♗xe3+ 20.♖xe3 ♖fc8 21.♖d1 d5 22.exd5 ♕xd5 23.♔xd5 exd5 24.♖xd5 ♖xh4?!

This move is dubious. The pawn was in no danger of queening. Also, it was weak. Better was ...♖xc2+ followed by ...♖h2. As it turned out, when the c-pawn queened, it forced Black's resignation.

25.♖c3!

This move works, because 25... ♖xc3?? is answered by 26.♖d8 mate.

25...♖h1+ 26.♔d2 ♖h2+ 27.♔d3 ♖xc3+ 28.♔xc3 h5 29.gxh6 gxh6 30.

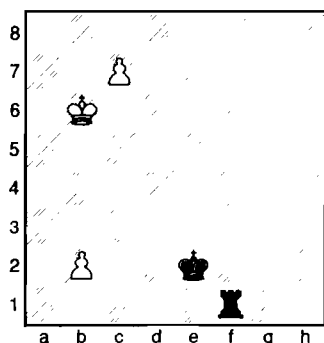
♖d6 h5 31. ♖xa6 h4 32. ♖b6 ♖f2 33. ♖xb5 ♖xf3+ 34. ♖b4 f5!

A nice move. It prevents White's Rook from going behind the enemy h-pawn. White will have to spend a few moves to blockade it.

35. ♖d5 h3 36. a4 h2 37. ♖d1 ♖h3 38. ♖h1 ♖f7 39. a5 ♖e6 40. a6 ♖h7 41. c4 f4 42. ♖b5 f3 43. a7

It seemed necessary to do this now, otherwise, when Black plays ...f3-f2, the Black Rook is free to move, because the White Rook can't take either the f- or h-pawn without the other queening.

43... ♖xa7 44. ♖xh2 ♖f7 45. ♖f2 ♖e5 46. c5 ♖d4 47. c6 ♖e3 48. ♖f1 ♖e2 49. ♖h1 f2 50. ♖b6 f1=♖ 51. ♖xf1 ♖xf1 52. c7



Black has a critical decision to make. Should he go to the first rank to trade for the c-pawn or go behind the pawn (which is the general principle for Rooks in endgames)? One choice draws; the other loses.

52... ♖c1??

Black's only blunder. Cold calculation reveals that in order for Black to draw, his King must get to c5. But this is impossible in this line, as White will queen with check.

53. b4 ♖d3 54. b5 ♖d4 55. ♖b7 ♖d5 56. b6 ♖d6 57. c8=♖ 1-0

Of course, after 57... ♖xc8 58. ♖xc8 ♖c6 59. b7, Black can offer no more resistance.

QGD Semi-Slav

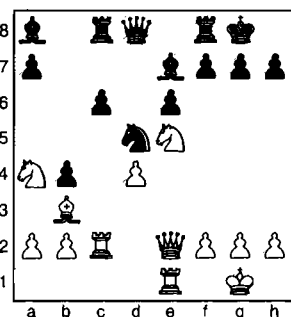
Mike Janniro (2030, 0.0)

Raleigh Foster (1977, 1.0)

Portland, Oregon Championship (2) 2008

1. ♖f3 ♖f6 2. c4 e6 3. d4 d5 4. ♖c3 c6 5. ♖f4 dxc4 6. e4 b5 7. ♖e2 b4 8. ♖a4

♗xe4 9. ♖xc4 ♖e7 10. O-O-O 11. ♖e1 ♖f6 12. ♖e2 ♖d5 13. ♖e5 ♖d7 14. ♖ac1 ♖xe5 15. ♖xe5 ♖b7 16. ♖b3 ♖c8 17. ♖c2 ♖a8



18. ♖ec1 ♖g5 19. ♖d1 ♖f4 20. ♖f1 c5 21. f3 cxd4 22. ♖xc8 ♖xc8 23. ♖xd4 ♖h3+ 24. ♖h1 ♖e3 25. ♖c4 ♖f2+ 26. ♖g1 ♖b8 27. f4 ♖d8 28. ♖e2 ♖g4+ 29. ♖f1 ♖xe5 30. ♖xe3 ♖xc4 31. ♖xc4 ♖d6 32. ♖e2 ♖d4 33. ♖c1 g6 34. b3 ♖e4 35. ♖c7 ♖d3 36. ♖c5 ♖xe2+ 37. ♖xe2 ♖d6 38. ♖a5 ♖c8 39. ♖d3 ♖c2+ 40. ♖e3 ♖c3 41. ♖b5 a6 0-1

Modern Defense

Landon Brownell (2249, 1.0)

Gunther Jacobi (1940, 0.0)

Portland, Oregon Championship (2) 2008

1. e4 g6 2. ♖c3 ♖g7 3. f4 d6 4. ♖f3 a6 5. a4 ♖g4 6. ♖c4 e6 7. h3 ♖xf3 8. ♖xf3 ♖c6 9. d3 ♖d4 10. ♖f2 ♖e7 11. O-O d5 12. ♖a2 O-O 13. ♖e3 c5 14. f5 exf5 15. ♖xd5 ♖xd5 16. ♖xd5 ♖d7 17. c3 fxe4 18. ♖xe4 ♖e6 19. ♖xc5 ♖fe8 20. ♖e3 f5 21. ♖f3 ♖h8 22. d4 f4 23. ♖d2 ♖xd4 24. ♖xf4 ♖f8 25. ♖g4 ♖f5 26. ♖fd1 ♖c6 27. ♖f3 ♖f6 28. ♖xb7 ♖ae8 29. ♖d2 g5 30. ♖h2 g4 31. hxg4 ♖h6 32. ♖e2 ♖e3 33. ♖xe3 ♖xe3 34. ♖xf6+ ♖xf6 35. ♖e1 ♖fe6 36. ♖f3 ♖g7 37. b4 ♖g6 38. ♖f4 ♖c2 39. ♖xe6+ ♖xe6 40. ♖d5 ♖e1+ 41. ♖f2 ♖a1 42. a5 ♖a3 43. ♖b7 ♖c4 44. ♖xa6 ♖xa5 45. bxa5 ♖xa5 46. ♖d3+ ♖g7 47. c4 ♖a2+ 48. ♖f3 ♖a3 49. ♖e3 ♖f6 50. c5 ♖e6 51. c6 1-0

Catalan

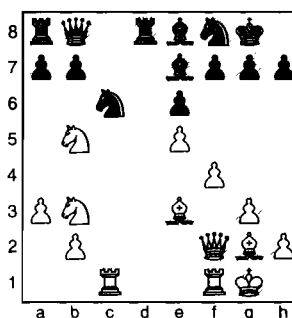
FM Nick Raptis (2305, 1.0)

NM James Bricher (2244, 1.0)

Portland, Oregon Championship (2) 2008

1. ♖f3 d5 2. g3 ♖f6 3. ♖g2 c5 4. O-O ♖c6 5. c4 e6 6. d4 cxd4 7. ♖xd4 ♖c5 8. ♖b3 ♖e7 9. cxd5 ♖xd5 10. e4 ♖f6 11. ♖e2 ♖c7 12. ♖c3 O-O 13. ♖e3 ♖d8 14. ♖ac1 ♖d7 15. f4 ♖e8 16. e5 ♖d7 17. ♖b5 ♖b8

18. ♖f2 ♖f8 19. a3



19... ♖b4 20. ♖xa7 ♖xa7 21. ♖xa7 ♖d3 22. ♖b6 ♖xc1 23. ♖xc1 ♖d7 24. ♖f2 ♖c5 25. ♖xc5 ♖xa7 26. ♖xb7 ♖xf2+ 27. ♖xf2 ♖d2+ 28. ♖g1 ♖xb2 29. ♖c8 ♖b1+ 30. ♖f2 ♖b2+ 31. ♖e3 ♖xg2 32. ♖xe8+ ♖f8 33. ♖c5 f6 34. ♖d7 ♖f7 35. ♖xf8+ ♖e7 36. ♖g8 ♖xd7 37. ♖xg7+ ♖e8 38. ♖xh7 fxe5 39. fxe5 ♖a2 40. ♖f4 ♖xa3 41. ♖g5 ♖f3 42. g4 1-0

Round Three

Sicilian Najdorf

Michael Morris (2044, 0.0)

Daniel Gay (1980, 0.0)

Portland, Oregon Championship (3) 2008

1. e4 c5 2. ♖f3 d6 3. d4 cxd4 4. ♖xd4 ♖f6 5. ♖c3 a6 6. ♖e3 e5 7. ♖b3 ♖e6 8. ♖e2 ♖e7 9. O-O O-O 10. f4 exf4 11. ♖xf4 b5 12. ♖f3 ♖c6 13. ♖h1 ♖e5 14. ♖d4 ♖c8 15. ♖d5 ♖e8 16. ♖xe7+ ♖xe7 17. ♖g5 h6 18. ♖xe6 ♖xe6 19. ♖xf6 gxf6 20. c3 ♖xf3 21. ♖xf3 ♖c4 22. ♖xf6 ♖xf6 23. ♖xf6 ♖cx4 24. ♖g1 ♖e2 25. ♖f2 ♖e1+ 26. ♖xe1 ♖xe1+ 27. ♖f1 ♖e2 28. ♖f2 ♖e1+ 29. ♖f1 ♖e2 30. ♖f2 Draw

French Steinitz

Gunther Jacobi (1940, 0.0)

FM Corey Russell (2205, 1.0)

Portland, Oregon Championship (3) 2008

Annotations by FM Corey Russell

1. ♖c3 d5 2. e4 e6 3. ♖f3 ♖f6 4. e5 ♖fd7 5. d4 c5 6. dxc5 ♖xc5

6... ♖xc5 might be more accurate. As the game went, I needed to reroute my dark-squared Bishop to e7 just so I could castle. The Knight was probably going to c5 anyways.

7. ♖d3 ♖c6 8. ♖f4 a6

8... ♖b6 9. O-O ♖xb2 10. ♖b5 is good for White. At a minimum, he has a draw in hand, since he can follow it up with

57th Annual Oregon Open

August 30, 31 & September 1, 2008

6-Round Swiss: 2 sections, Open & Reserve (under 1800)

Time Control: 40 moves in 2 hours, then sudden death in 1 hour (40/2; SD/1)

Registration: Saturday 9-10:30 am **Rounds:** Sat 11 & 5:30; Sun 9:30 & 5:30; Mon 9 & 3

Location: Mt. Hood Community College, Vista Room; 26000 SE Stark, Gresham, Oregon

Check website: www.pdxchess.org for directions to playing site

Organizer: Portland Chess Club **Byes:** 2 Byes available, commit before Rd 3

Oregon Chess Federation Business Meeting: Sun 3:30 Open Section will be **FIDE** rated

\$3,000 Guaranteed

\$1500 in each Section

Increased at discretion of Organizer if more that 100 non-junior players

Open: 1st \$550; 2nd \$300; 3rd \$200 **U2000:** 1st \$200; 2nd \$150; 3rd \$100

Reserve: 1st \$370; 2nd \$220; 3rd \$130 **U1600, U1400, U1200 each \$130-80-50**

Unrated players limited to class prizes of \$100 in Open, \$60 in reserve

Steve Christopher Memorial Special Prize: \$200 bonus for perfect score in Open Section

Entry: \$60.00; \$50.00 for Portland Chess Club members who register by August 28.

Juniors (under 19) may pay \$15.00 and compete for non-cash prizes in Reserve Section (no Portland Chess Club discount)

Memberships: United States Chess Federation and Oregon or Washington Chess Federation required (other states okay) *a Harmon NW Chess Grand Prix event*

Name _____

Address _____

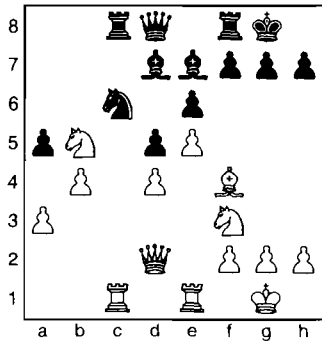
USCF ID # _____ USCF Exp _____ OCF/WCF Exp _____ Rating _____

Email _____ Section _____ Bye Rds _____

Entries: Payable to Portland Chess Club; mail to Mike Morris, 2344 NE 27th Ave., Portland, OR 97212

11. ♖b1 ♜xa2 12. ♖a1 ♜b2 and get a draw by three-time repetition.

9. O-O ♗e7 10. ♜d2 ♗c5 11. ♖fe1 ♗xd3 12. cxd3 ♗d7 13. a3 ♖c8 14. ♖ac1 b5 15. b4 O-O 16. d4 a5 17. ♗xb5



17...axb4?

17... ♗xe5! is far better, as this prevents White from getting a cramping Knight (or pawn) on d6. For example, 18. ♗xe5 ♗xb5 19. ♖xc8 ♜xc8 20. bxa5 ♗xa3 and Black's light-squared Bishop has a much better future than in the game continuation. The position would be level.

18. ♗d6 ♖b8 19. axb4 ♗xb4 20. ♖b1 ♗c6 21. ♖ec1 ♜a5 22. ♜d1 ♖xb1 23. ♖xb1 Draw

My opponent offered a draw. Thinking my chances of losing were greater than of winning, I took the draw. As I said before, the Bishop at d7 is a big liability.

French Advance

Raleigh Foster (1977, 2.0)
FM Nick Raptis (2305, 2.0)

Portland, Oregon Championship (3) 2008

1. e4 e6 2. d4 d5 3. e5 c5 4. c3 ♗c6 5. ♗f3 ♜b6 6. ♗d3 cxd4 7. O-O ♗d7 8. ♖e1 ♗h6 9. cxd4 ♗xd4 10. ♗c3 ♗c5 11. ♖b1 ♗g4 12. ♗xd4 ♗xd4 13. ♜xg4 ♗xf2+ 14. ♗f1 ♗xe1 15. ♗xe1 O-O-O 16. ♗e2 f6 17. ♜g3 ♜c7 18. exf6 ♜xg3+ 19. ♗xg3 gxf6 20. ♗e3 ♗b8 21. ♗d2 h5 22. ♗e2 d4 23. ♗g1 ♖hg8 24. ♗xh5 e5 25. ♖e1 ♖g7 26. ♗f3 ♖e8 27. ♗e4 f5 28. ♗f6 ♖e6 29. ♗xd7+ ♖xd7 30. g4 ♖b6 Draw

Benko Gambit

NM Radu Roua (2209, 2.0)
Mike Janniro (2030, 0.0)

Portland, Oregon Championship (3) 2008

1. d4 ♗f6 2. c4 c5 3. d5 b5 4. cxb5 a6 5. b6 ♜xb6 6. ♗c3 d6 7. a4 a5 8. e4 g6 9. ♗f3

♗g7 10. ♗d2 O-O 11. ♗c4 ♜d8 12. ♗e2 ♗a6 13. O-O ♗b4 14. ♗e3 ♗a6 15. ♜d2 ♗g4 16. ♗f4 ♗xc4 17. ♗xc4 ♗e5 18. ♗b5 ♜c8 19. ♖ac1 h5 20. ♗h1 ♗h7 21. h3 ♖b8 22. ♗g5 f6 23. ♗e3 ♗f7 24. f4 f5 25. ♖cd1 ♖b7 26. ♗e2 ♗h6 27. ♗f3 c4 28. ♗e2 ♗d3 29. ♗xd3 cxd3 30. ♜xd3 ♖xb2 31. ♖c1 ♖b3 32. ♗d4 fxe4 33. ♜d1 ♜b7 34. ♗xg7 ♗xg7 35. ♗xe4 ♗f5 36. ♖e1 ♗h6 37. ♗c3 ♜b4 38. ♗e2 ♖b8 39. ♖a1 ♗e3 40. ♜c1 ♜e4 41. ♖g1 ♗xd5 42. ♖e1 ♗e3 43. ♖g1 ♗f5 44. ♗c3 ♜c6 45. ♖a3 ♖xa3 46. ♜xa3 ♜c4 47. ♗b5 ♜xf4 48. g4 ♗h4 49. g5+ ♗h7 50. ♖e1 ♜xg5 51. ♜a2 ♖f8 52. ♗d4 ♜g3 53. ♖xe7+ ♗h8 54. ♜e2 ♜xh3+ 55. ♗g1 ♜g3+ 56. ♗h1 ♜f4 57. ♗e6 ♜f1+ 58. ♜xf1 ♖xf1+ 59. ♗h2 ♗f5 60. ♖a7 ♖e1 61. ♗f4 ♗e7 62. ♖xe7 ♖xe7 63. ♗xg6+ ♗g7 64. ♗xe7 ♗f7 65. ♗c6 ♗e6 66. ♗xa5 ♗d5 67. ♗b3 ♗c4 68. ♗g3 d5 69. a5 ♗b5 Draw

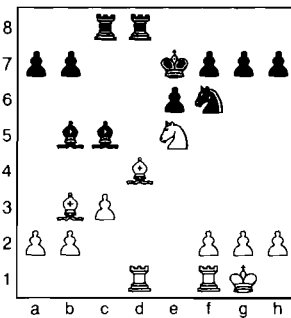
French Tarrasch

NM James Bricher (2244, 1.0)

NM Landon Brownell (2249, 2.0)

Portland, Oregon Championship (3) 2008

1. e4 e6 2. d4 d5 3. ♗d2 c5 4. exd5 ♜xd5 5. ♗g3 cxd4 6. ♗c4 ♜d6 7. O-O ♗f6 8. ♗b3 ♗c6 9. ♗bxd4 ♗xd4 10. ♜xd4 ♗d7 11. ♗e3 ♜xd4 12. ♗xd4 ♖c8 13. ♗b3 ♗c5 14. ♖ad1 ♗e7 15. ♗e5 ♖hd8 16. c3 ♗b5



17. ♗xc5+ ♖xc5 18. ♖xd8 ♗xf1 19. ♖a8 ♖xe5 20. ♗xf1 ♗e4 21. f3 ♗d2+ 22. ♗f2 ♖a5 23. ♗e3 ♗xb3 24. axb3 ♖a2 25. b4 ♗f6 26. ♗d3 a6 27. ♗c2 ♖a1 28. b5 ♖g1 29. b6 ♖xg2+ 30. ♗c1 ♖g1+ 31. ♗c2 ♗e7 32. ♖b8 ♗d6 33. ♖xb7

♗c6 34. ♖xf7 ♗xb6 35. ♗d3 ♖g2 36. b4 a5 37. bxa5+ ♗xa5 38. ♗d4 ♗b5 39. ♖e7 ♖d2+ 40. ♗e5 ♖e2+ 41. ♗d6 ♖xh2 42. ♖xg7 h5 43. ♗xe6 h4 44. ♗f5 ♗c4 45. ♖c7+ ♗d3 46. ♗g4 ♗e3 47. ♖f7 ♗d3 48. ♖h7 ♖g2+ 49. ♗f4 ♖h2 50. ♖c7 ♖g2 51. ♖h7 ♖h2 52. ♖h5 ♗xc3 53. ♗g4 ♗d3 54. ♖xh4 ♖g2+ 55. ♗f5 ♖g8 56. f4 ♖e8 57. ♗g6... 1-0

White won in a few more moves.

Round Four

Last time I played 1. e4 and Bricher got the better of me in a Pirc/Modern. I didn't have an improvement; so I thought I'd try a different tack.—C. Russell

Semi-Slav Noteboom

FM Corey Russell (2205, 1.5)

NM James Bricher (2244, 2.0)

Portland, Oregon Championship (4) 2008

Annotations by FM Corey Russell

1. d4 d5 2. ♗f3 c6 3. c4 e6 4. ♗c3 dxc4 5. a4 ♗b4 6. ♗d2 a5 7. e3 b5

Bricher had a battle with me in this variation before. I got the better game, but he improved on his line in this game.

8. axb5 ♗xc3 9. ♗xc3 cxb5 10. b3 ♗b7 11. bxc4 b4 12. ♗b2 ♗f6 13. ♗d3 ♗bd7 14. O-O O-O 15. ♖e1 ♜c7 16. e4 e5 17. ♗xe5?!

Instead, 17. d5 is better.

17... ♗xe5 18. dxe5 ♗d7 19. f4 ♗c5 20. ♗b1

I decided against ♗c2. After the eventual and sure ... ♖d8, my Queen will have to move, which will allow ... a5-a4, and Black can get a lot of tempi. Not only that, but ... ♖d2 can be quite a problem. 20. ♗b1 avoids all those problems.

20... a4 21. ♜f3 ♗b3 22. ♖xa4!?



Carl A. Haessler

Lessons • Lectures • Exhibitions

USCF Life Master
3-Time Oregon Champion

(503) 358-7871
ssmith6154@aol.com

22. ♖a2 didn't seem to have much of a future.

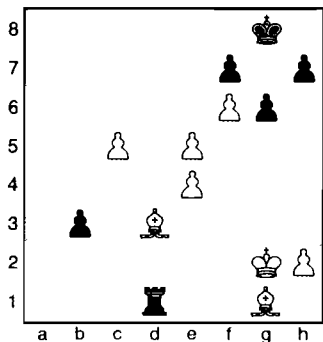
22... ♖c5+ 23. ♘h1 ♖xa4 24. ♖xb3 ♖f2 25. ♖g1 ♖aa8 26. ♙c1 ♙c6 27. f5 ♙a4 28. ♖h3 ♖fd8 29. ♖g4

Black was threatening 29... ♖d1, which would have been devastating. The text defends that, plus it has threats of its own.

29... ♙c2 30. f6 g6 31. ♖g5 ♖d1 32. ♖xd1 ♙xd1 33. ♙e3 ♖f1+ 34. ♙g1 ♙f3

This is a forced, but also a good, move.

35. gxf3 ♖xf3+ 36. ♖g2 ♖xg2+ 37. ♘xg2 ♖a1 38. ♙d3 b3 39. c5 ♖d1



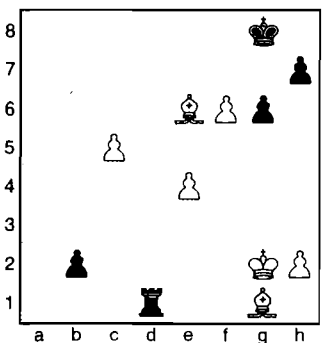
40. e6!

Sets up a deep idea to try to hold the position. White's weak pawn structure makes it difficult for him to hold the ending, if he has to sacrifice one of his Bishops for the Black b-pawn.

40... fxe6

Of course not 40... ♖xd3?? 41. e7 and Black is helpless to prevent White queen-ing and then mating.

41. ♙c4 b2 42. ♙xe6+



42... ♘f8?

Gives White the draw. 42... ♘h8 wins because of 43. f7 ♖xg1+.

43. ♙e3!

The position is equal now. If 43... b1=♖, then 44. ♙h6+ ♘e8 45. f7+ ♘e7 46. f8=♖+ ♘xe6 47. ♖e8+ ♘f6 48. ♖f8+ is a draw by perpetual check.

43... ♖g1+ 44. ♙xg1 b1=♖ 45. ♙d5 ♖b2+ 46. ♙f2 ♖xf6 47. c6 ♖c3 Draw

Black offered the draw. White will play ♙g3 and c6-c7, which forces Black to give perpetual check. If White's King were safe, he could try to win it. Without King safety, a draw is the correct result.

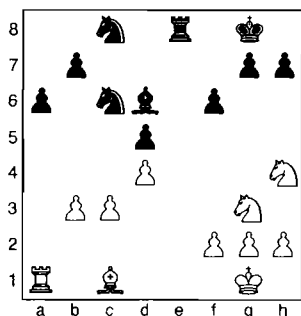
French Tarrasch

FM Nick Raptis (2305, 2.5)

Landon Brownell (2249, 2.0)

Portland, Oregon Championship (4) 2008

1. e4 e6 2. d4 d5 3. ♘d2 a6 4. ♘gf3 c5 5. exd5 exd5 6. ♙d3 c4 7. ♙e2 ♘c6 8. O-O ♙d6 9. c3 ♘ge7 10. b3 cxb3 11. axb3 O-O 12. ♖e1 ♙g4 13. ♘f1 f6 14. ♘g3 ♖d7 15. ♘h4 ♙xe2 16. ♖xe2 ♖ae8 17. ♖e6+ ♖xe6 18. ♖xe6 ♘c8 19. ♖xe8 ♖xe8



20. ♘f1 ♖e1 21. ♘f3 ♖d1 22. ♙b2 ♖xa1 23. ♙xa1 b5 24. ♘e3 ♘b6 25. ♘f1 a5 26. ♘e2 a4 27. bxa4 bxa4 28. g3 ♘a5 29. ♘d2 ♙a3 30. ♘d1 ♘b3 31. ♘c2 ♙d6 32. ♙b2 ♘xd2 33. ♘xd2 ♘f7 34. ♘d3 ♘c4 35. ♙a1 ♘e6 36. ♘e3 ♘a5 37. c4 ♘xc4 38. ♘xc4 dxc4+ 39. ♘xc4 h5 40. ♘b5 a3 41. ♘c6 a2 42. d5+ ♘e7 43. f4 h4 44. ♙d4 g6 45. ♙c3 hxg3 46. hxg3 f5 47. ♙d4 g5 48. ffg5 ♙xg3 49. g6 f4 50. d6+ ♘f8 51. ♙f6 ♙h4 52. ♙xh4 a1=♖ 53. d7 ♖h1+ 0-1

Modern Defense

Daniel Gay (1980, 0.5)

Gunther Jacobi (1940, 0.5)

Portland, Oregon Championship (4) 2008

1. e4 g6 2. d4 ♙g7 3. c4 d6 4. ♘c3 e5 5. dxe5 dxe5 6. ♖xd8+ ♘xd8 7. ♙g5+ f6 8. O-O-O+ ♘d7 9. ♙e3 ♙h6 10. ♘d5

♙xe3+ 11. ♘xe3 c6 12. ♙d3 ♘c7 13. ♘e2 ♘e7 14. g4 ♘c5 15. ♙c2 a5 16. f3 ♙d7 17. ♘g3 ♖ad8 18. h3 ♙c8 19. ♖xd8 ♖xd8 20. ♖d1 ♘e6 21. ♖xd8 ♘xd8 22. ♘e2 ♘d4 23. ♘g1 g5 24. ♘d2 ♘g6 25. ♙d1 ♘f4 26. ♘c3 b6 27. ♘c2 ♘xc2 28. ♙xc2 ♘c7 29. a3 h5 30. b4 axb4+ 31. axb4 c5 32. b5 ♘d6 33. ♘d2 ♙e6 34. ♙d3 h4 35. ♘e3 ♙f7 36. ♘d2 ♘e7 37. ♘e3 ♘d6 38. ♘d2 ♙e6 39. ♘e3 Draw

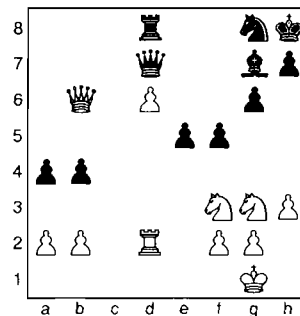
Ruy Lopez Karpov

Raleigh Foster (1977, 2.5)

NM Radu Roua (2209, 2.5)

Portland, Oregon Championship (4) 2008

1. e4 e5 2. ♘f3 ♘c6 3. ♙b5 a6 4. ♙a4 ♘f6 5. O-O b5 6. ♙b3 ♙e7 7. ♖e1 d6 8. c3 O-O 9. h3 ♘d7 10. d4 ♙f6 11. d5 ♘e7 12. ♘bd2 ♘c5 13. ♙c2 a5 14. ♘f1 ♙b7 15. ♘g3 g6 16. ♙h6 ♙g7 17. ♖d2 ♘h8 18. ♖ad1 ♘g8 19. ♙e3 ♖e7 20. ♙xc5 dxc5 21. d6 cxd6 22. ♖xd6 ♖fd8 23. ♖b6 b4 24. ♙b3 ♖xd1 25. ♖xd1 a4 26. ♙d5 ♖d8 27. cxb4 cxb4 28. ♖d2 ♙xd5 29. exd5 f5 30. d6 ♖d7



31. ♘g5 ♙f6 32. ♘f3 e4 33. ♘h2 a3 34. bxa3 bxa3 35. ♖d5 ♖e6 36. ♖d2 ♖d7 37. ♖b4 e3 38. ♖d1 exf2+ 39. ♘xf2 ♖xa2+ 40. ♖d2 ♙b2 41. ♘f3 ♖e6 42. h4 ♖f6 43. ♖b3 h6 44. h5 g5 45. ♖d5 f4 46. ♘e4 ♖e6 47. ♘c5 ♖e3+ 48. ♘f1 ♖xb3 49. ♘xb3 ♘f6 50. ♘e5 ♘xd5 51. ♘xd7 ♘e3+ 52. ♘e2 ♘f5 53. ♘b6 ♘xd6 54. ♘a4 ♘f5 0-1

English Opening

Mike Janniro (2030, 0.5)

Michael Morris (2044, 0.5)

Portland, Oregon Championship (4) 2008

1. c4 c5 2. g3 ♘c6 3. ♙g2 g6 4. ♘c3 ♙g7 5. e3 e5 6. ♘ge2 ♘ge7 7. O-O d6 8. a3 O-O 9. ♖b1 a5 10. ♘b5 ♙e6 11. d3 d5 12. cxd5 ♙xd5 13. e4 ♙a2 14. ♖a1 ♙e6 15. ♙e3 b6 16. ♖d2 ♖d7 17. ♘c1 f5 18. ♙h6 f4 19. ♙xg7 ♘xg7 20. f3 h5

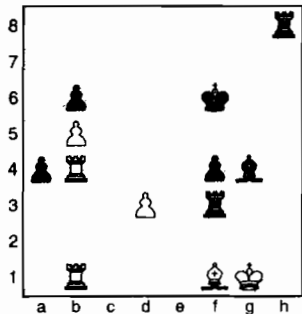
2008 Oregon State Championship

Name & USCF/FIDE		Rtg	1	2	3	4	5	6	7	8	9	10	T	S-B	
1	Roua, Radu 13205356 1206630	2205 2234		0	0.5	1	1	1	1	0.5	1	1	7.0	26.75	1st
2	Raptis, Nick 12470662 2016850	2305 2262	1		0	0.5	1	1	0.5	1	0.5	1	6.5	26.50	=2nd-3rd
3	Brownell, Landon 12747886 2028395	2249 2277	0.5	1		0.5	0	0.5	1	1	1	1	6.5	25.75	=2nd-3rd
4	Foster, Raleigh 12934930 2004160	1977 2115	0	0.5	0.5		1	0.5	0	1	1	0.5	5.0	19.75	4th
5	Bricher, James 10506905	2244 0	0	0	1	0		0.5	0.5	1	0.5	1	4.5	16.75	=5-6th
6	Russell, Corey 12523449 2006618	2205 2211	0	0	0.5	0.5	0.5		1	0.5	1	0.5	4.5	16.50	=5-6th
7	Morris, Michael 10505798 2024357	2044 2181	0	0.5	0	1	0.5	0		0	0.5	1	3.5	13.75	
8	Janniro, Mike 10482569 2009633	2030 2090	0.5	0	0	0	0	0.5	1		0.5	0.5	3.0	11.50	
9	Gay, Daniel 12832272 2004178	1980 2086	0	0.5	0	0	0.5	0	0.5	0.5		0.5	2.5	9.75	
10	Jacobi, Gunther 12869742 2004437	1940 1964	0	0	0	0.5	0	0.5	0	0.5	0.5		2.0	7.50	

July 2008

Northwest Chess

21.gxf4 ♖d4 22.♗xd4 ♜xd4+ 23.♞f2 ♞xf2+ 24.♞xf2 exf4 25.♞d2 ♖c6 26.♗e2 ♞ad8 27.♗f2 ♖d4 28.♞g1 ♗xe2 29.♗xe2 ♞d4 30.♞b1 ♞fd8 31.b3 g5 32.h3 ♗f6 33.♗f1 g4 34.hxg4 hxg4 35.fxg4 ♗xg4+ 36.♗f2 ♞xe4 37.♞db2 ♞e3 38.b4 cxb4 39.axb4 a4 40.b5 ♞h8 41.♞b4 ♞f3+ 42.♗g1



42..♗f5 43.♗g2 ♞g3 44.♗f2 ♗g5 45.♞1b2 ♞xd3 46.♞xa4 f3 47.♗f1 ♞h2+ 48.♗g3 ♞xb2 49.♞xg4+ ♗f5 50.♗xd3+ ♗e5 51.♗xf3 ♗d6 52.♗e3 1-0

Round Five

Sicilian Closed

NM James Bricher (2244, 2.5)
Daniel Gay (1980, 1.0)

Portland, Oregon Championship (5) 2008

1.e4 c5 2.♗c3 a6 3.g3 b5 4.♗g2 ♗b7 5.d3 e6 6.f4 d5 7.e5 ♗e7 8.♗f3 ♗f5 9.d4 ♗c6 10.♗e2 ♞b6 11.c3 cxd4 12.cxd4 ♗b4+ 13.♗f1 h5 14.♗h3 ♗h6 15.♗e3 g6 16.♗f2 ♞c8 17.♗g2 ♗a5 18.b3 ♗e7 19.♗e3 ♗d7 20.♞d3 b4 21.♞hc1 ♗c6 22.♞d2 ♗b5 23.♗g1 ♞xc1+ 24.♞xc1 ♞c8 25.♞xc8 ♗xc8 26.♞c2+ ♞c6 27.♞xc6+ ♗xc6 28.♗c1 a5 29.♗f1 ♗xf1 30.♗xf1 ♗f5 31.♗e2 ♗a7 32.♗d3 ♗b5 33.♗e2 ♗d7 34.♗f2 ♗d8 35.h3 ♗e8 36.♗e1 Draw

Sicilian Defense

NM Landon Brownell (2249, 3.0)
FM Corey Russell (2205, 2.0)

Portland, Oregon Championship (5) 2008

Annotations by FM Corey Russell

1.e4 c5 2.♗c3 ♗c6 3.♗b5 e6 4.♗xc6 bxc6 5.f4 d5 6.d3 ♗a6 7.e5 h5 8.♗f3 ♗h6 9.O-O ♗f5 10.b3 ♗e7 11.♗h1 h4

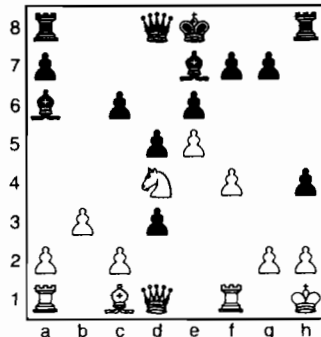
I was happy with the result of the opening. White has nothing.

12.♗e2 c4

Northwest Chess

White had the positional threat of c2-c4, blockading the position, which favors Knights and fixes the weak pawn on c5, making it easier to win. So, instead, I played 12...c4 first: to get rid of my doubled pawns and to open some lines for my Bishops.

13.♗ed4 ♗xd4 14.♗xd4 cxd3!



If 15.♗xc6 ♞c7 16.♗xe7 dxc2 and White's Queen, Rook, and Knight are *en prise*. Even worse, when the White Queen moves and Black takes the Rook, the Knight at e7 will be trapped; so White will lose even more material. Finally, note that sacrificing White's Knight on d5 and recapturing with the Queen, hitting Black's Rook is no good because of Black's reply of ...♞d8.

15.cxd3 ♞b6 16.♞c2 ♗d7

Of course not 16...♞xd4 17.♞xc6+, as Black's position crumbles. I wanted to connect my Rooks so that, should White capture after an ...h4-h3 push, I'd be able to double easily on the h-file.

17.♗f3 h3 18.g3 c5 19.♞d1 d4 20.♗g1 ♗b7 21.♞f1

This is correct. White must keep the h1-a8 diagonal blockaded as a Black Queen-plus-Bishop battery on that diagonal would not be pretty.

21...♞ac8 22.♞b1 f6 23.♞b2 ♗xf3 24.♞xf3 fxe5 25.fxe5 ♞hf8 26.♞f4!

White begins to set up a fortress, not to mention he closes the key h1-a8 diagonal again.

26...g5 27.♞e4 ♞f3 28.♞e2 ♞f7

I realized that my move before last was no good, as my intended 28...♞cf8 fails to 29.♗f4!, which cuts off protection of the f3-Rook. Consequently, I would lose material.

29.♞b2 ♞cf8 30.♞c2 ♞a6

Threatens 31...♞f1+ 32.♞xf1 ♞xf1+ 33.♗xf1 ♞xd3+, which would win for Black.

31.♞d2 ♞a5 32.♞c2 ♞a6 33.♞d2 ♞a5 Draw

I couldn't see anything better than repeating, as White is defending successfully; so I took the draw.

Ruy Lopez Breyer

Michael Morris (2044, 0.5)

Raleigh Foster (1977, 2.5)

Portland, Oregon Championship (5) 2008

1.e4 e5 2.♗f3 ♗c6 3.♗b5 a6 4.♗a4 ♗f6 5.O-O ♗e7 6.♞e1 b5 7.♗b3 O-O 8.h3 d6 9.c3 ♗b8 10.d4 ♗bd7 11.♗bd2 ♗b7 12.♗c2 ♞e8 13.♗f1 ♗f8 14.♗g3 c6 15.♗g5 h6 16.♗e3 ♞c7 17.♞d2 ♞ad8 18.dxe5 dxe5 19.♞e2 g6 20.♗h2 ♗h7 21.♞f1 ♗c5 22.♗g4 ♗xg4 23.♞xg4 ♞d6 24.♞ad1 ♞f8 25.♞xd7 ♗c8 26.♞xd8 ♗xg4 27.♗xc5 ♞xc5 28.♞xe8 ♗d7 29.♞a8 b4 30.♗b3 bxc3 31.bxc3 ♗e6 32.♗xe6 fxe6 33.♞d1 ♗g7 34.♞d7+ ♗f6 35.h4 a5 36.♞aa7 g5 37.♞f7+ 1-0

Beefeater Benoni

NM Radu Roua (2209, 3.5)

FM Nick Raptis (2305, 2.5)

Portland, Oregon Championship (5) 2008

1.d4 g6 2.c4 ♗g7 3.♗c3 c5 4.d5 ♗xc3+ 5.bxc3 f5 6.g4 d6 7.♞a4+ ♗d7 8.♞b3 ♞a5 9.♗d2 b6 10.♗f3 ♗f6 11.gxf5 ♗xf5 12.♗g5 ♗a6 13.♞b5+ ♞xb5 14.cxb5 ♗c7 15.c4 h6 16.♗h3 e6 17.f3 exd5 18.cxd5 ♗xb5 19.e4 ♗xh3 20.♗xh3 ♗d4 21.O-O g5 22.♗h1 O-O 23.♞ae1 ♗h5 24.♗g4 ♗f4 25.♗xf4 ♞xf4 26.e5 dxe5 27.♞xe5 ♞af8 28.♗g2 ♞4f6 29.a4 ♗g7 30.♗h5 ♗f5 31.♞d1 ♞d8 32.♗g4 ♗h4+ 33.♗g3 ♗g6 34.♞e3 ♞fd6 0-1

French Steinitz

Gunther Jacobi (1940, 1.0)

Mike Janniro (2030, 1.5)

Portland, Oregon Championship (5) 2008

1.♗c3 e6 2.♗f3 d5 3.e4 ♗f6 4.e5 ♗fd7 5.d4 c5 6.dxc5 ♗xc5 7.♗d3 ♗c6 8.♗f4 a6 9.O-O ♗e7 10.♞d2 ♗c5 11.a3 ♗d7 12.♞fc1 ♗xd3 13.cxd3 O-O 14.b4 ♞b8 15.♞ab1 b5 16.♗xd5 exd5 17.e6 ♞b7 18.exd7 ♞xd7 19.♞c2 ♞ac8 20.♞bc1 ♗d6 21.♗xd6 ♞xd6 22.♞c5 ♗e7 23.d4 f6 24.♗e1 ♞xc5 25.♞xc5 ♞c8 26.♗f3

♖e6 27.♗f1 ♖e4 28.♖e2 ♗b1+
29.♗e1 ♖e4 30.f3 ♖xe2+ 31.♗xe2 ♖e8
32.♗d2 ♗f5 33.♗c2 ♖e6 34.♗d3 ♗f7
35.♖c7+ ♗e7 36.♖a7 ♖d6 37.♗e3 g6
38.g4 ♗e6 39.♖c7 ♖c6 40.♖a7 h6
41.♗d2 f5 42.♖a8 ♗c8 43.♖b8 Draw

Round Six

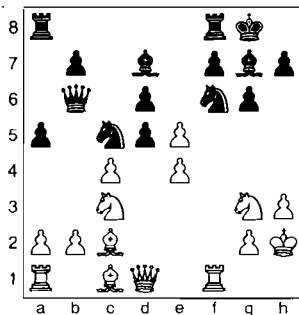
King's Indian Hungarian

NM Radu Roua (2209, 3.5)

Michael Morris (2044, 1.5)

Portland, Oregon Championship (6) 2008

1.d4 ♗f6 2.c4 g6 3.♗c3 ♖g7 4.e4 d6
5.♗d3 e5 6.d5 a5 7.♗ge2 ♗a6 8.O-O
O-O 9.♗g3 ♗d7 10.h3 ♗c5 11.♗c2 c6
12.f4 ♗b6 13.♗h2 cxd5 14.fxe5



14...dxe5 15.exd5 ♗e8 16.♗ge4 ♗xe4
17.♗xe4 f5 18.c5 ♖a7 19.c6 bxc6
20.♗b3 ♗h8 21.♗g5 ♗f6 22.d6 ♗g7
23.♖d2 ♖d8 24.♗xh7 f4 25.♗xf8 ♗xf8
26.♖e2 ♗xd6 27.♗e3 ♖c7 28.♗c5
♗g7 29.♗xd6 ♖xd6 30.♖ad1 ♖c7
31.♖c4 ♖f8 32.♗h1 ♗f5 33.♗c2 ♖h8
34.♗xf5 gxf5 35.♖e6 ♖d8 36.♖xf5
♖d5 37.♖d3 ♖b6 38.b3 ♖c5 39.♖fd1
♖f2 40.a4 ♖d4 41.♖xd4 exd4 42.♖d7+
♗g6 43.♖xc6 ♖b2 44.♖e4+ 1-0

English Opening

Mike Janniro (2030, 2.0)

NM James Bricher (2244, 3.0)

Portland, Oregon Championship (6) 2008

1.c4 e5 2.g3 ♗c6 3.♗g2 g6 4.♗c3 ♗g7
5.♖b1 a5 6.♗f3 d6 7.d3 f5 8.a3 ♗f6 9.
O-O O-O 10.b4 axb4 11.axb4 h6 12.b5
♗e7 13.♖b3 ♗e6 14.♗d2 ♖b8 15.♗d5
g5 16.e3 ♗g6 17.f4 ♗xd5 18.cxd5 exf4
19.exf4 gxf4 20.b6 ffg3 21.hxg3 ♗g4
22.♗f3 ♗6e5 23.♗h4 ♗d7 24.bxc7
♖xc7 25.♗f4 ♗d4+ 26.♗h1 ♗de5 27.
♗xe5 ♗xe5 28.♗xf5 ♗g7 29.♖b4 ♗e5
30.♖h4 ♖f6 31.♗e4 ♖b8 32.♖f4 ♗g6
33.♗xh6+ ♗xh6 34.♖xh6 ♗xf4 35.
♖g5+ ♖g7 36.♖xg7+ ♗xg7 37.♖xb7+
♖8f7 38.♖xf7+ ♖xf7 39.gxf4 ♖xf4 40.
♗g2 ♗f6 41.♗f3 ♗e5 42.♗f2 ♗d4 43.

♗e2 ♖h4 44.♗e4 ♖h2+ 45.♗e1 ♗e3
46.♗d1 ♖a2 47.♗g6 ♖a5 48.♗e4 ♖c5
49.♗h7 ♖xd5 50.♗c2 ♖c5+ 51.♗d1
♖c3 52.♗g6 ♖xd3+ 53.♗xd3 ♗xd3
54.♗e1 d5 55.♗d1 d4 0-1

French Tarrasch

Daniel Gay (1980, 1.5)

NM Landon Brownell (2249, 3.5)

Portland, Oregon Championship (6) 2008

1.e4 e6 2.d4 d5 3.♗d2 c5 4.♗gf3 a6
5.exd5 exd5 6.dxc5 ♗xc5 7.♗b3 ♗b6
8.♗e2 ♗f6 9.O-O ♗c6 10.c3 O-O 11.
♗g5 ♖e8 12.♗fd4 ♖d6 13.♗xf6 ♖xf6
14.♗f3 ♗e6 15.♖e1 ♗e5 16.♖c2 ♖ac8
17.♖ad1 ♖c4 18.♗d2 ♖c7 19.♗2b3
♖ce7 20.♖e2 ♗f5 21.♖d2 ♗xf3+ 22.
gxf3 ♗h3 23.♖xe7 ♖g6+ 0-1

King's Indian Four Pawns

Raleigh Foster (1977, 2.5)

Gunther Jacobi (1940, 1.5)

Portland, Oregon Championship (6) 2008

1.e4 g6 2.d4 ♗g7 3.♗f3 d6 4.♗e2 a6
5.c4 c5 6.♗c3 cxd4 7.♗xd4 ♗c6 8.♗e3
♗f6 9.O-O O-O 10.♖d2 ♗d7 11.f4 ♖c8
12.♖ae1 ♗xd4 13.♗xd4 ♗c6 14.♗f3
e5 15.♗e3 b5 16.cxb5 axb5 17.b4 ♖e7
18.fxe5 dxe5 19.♗c5 ♖d8 20.♖e2 ♖e8
21.♗xb5 ♗xb5 22.♖xb5 ♖a8 23.a4 h5
24.a5 ♖d7 25.♗e2 ♖eb8 26.♗b6 ♖e7
27.♗c4 ♗h7 28.♖c5 ♗f8 29.♖f2 ♗g7
30.♗c5 ♖c7 31.a6 ♖xb4 32.♗xb4
♖xc4 33.♖c5 ♖xa6 34.♖xe5 ♗g4
35.♖d5 ♖a7+ 36.♗c5 ♖c7 37.e5 ♖a5
38.♖xf7 ♖xc5 39.♖xc7 ♖xd5 40.♖b1
♖xe5 41.h3 ♗f6 42.♖bb7 Draw

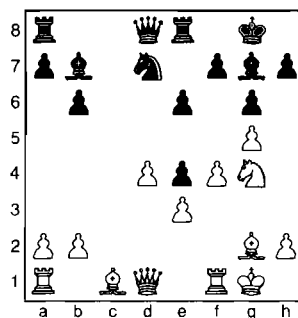
Grünfeld Fianchetto

FM Nick Raptis (2305, 3.5)

NM Corey Russell (2205, 2.5)

Portland, Oregon Championship (6) 2008

1.d4 ♗f6 2.♗f3 g6 3.g3 ♗g7 4.♗g2
O-O 5.O-O d5 6.c4 c6 7.cxd5 cxd5 8.♗e5
e6 9.♗c3 ♗bd7 10.f4 ♖e8 11.e3 b6
12.g4 ♗b7 13.g5 ♗e4 14.♗xe4 dxe4
15.♗g4



15...♖c8 16.♗d2 h5 17.♗f2 e5 18.dxe5
♗xe5 19.fxe5 ♖xg5 20.♗h3 ♖xe5 21.
♗c3 ♖c5 22.♗xg7 ♗xg7 23.♖e2 ♖c2
24.♖b5 ♖c5 25.♖xc5 ♖xc5 26.♖ad1
♖e7 27.♗f2 g5 28.♖fd2 ♗g6 29.♗f2
f5 30.h4 f4 31.hxg5 fxe3 32.♖d6+ ♗xg5
33.♗h3+ ♗h4 34.♖g6 ♖f7 35.♖e1
♗c8 36.♖xe3 ♖c1+ 37.♗h2 ♖c2 38.
♖xe4+ ♗g4 39.♖exg4+ 1-0

Round Seven

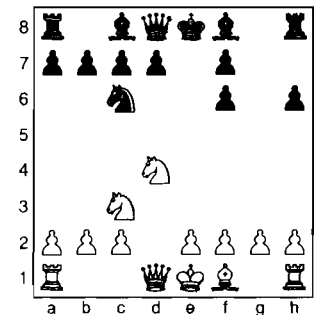
Dunst Opening

Gunther Jacobi (1940, 2.0)

NM Radu Roua (2209, 4.5)

Portland, Oregon Championship (7) 2008

1.♗c3 e5 2.♗f3 ♗c6 3.d4 exd4 4.♗xd4
♗f6 5.♗g5 h6 6.♗xf6 gxf6



7.e3 a6 8.♖h5 d6 9.♗xc6 bxc6 10.♗c4
♖e7 11.O-O-O ♖g8 12.h3 ♖g5 13.♖f3
♗d7 14.e4 ♗g7 15.♖he1 ♗f8 16.♗b3
♖e5 17.♖e3 ♖xg2 18.f4 ♖h5 19.e5
fxe5 20.fxe5 ♗xe5 21.♖e4 ♖g6 22.♖b4
♖e8 23.♖f1 ♗e6 24.♖d3 ♖g1 25.
♖dd1 ♖xf1 26.♖xf1 ♖g2 27.♖e1 ♗xb3
0-1

French Classical

Michael Morris (2044, 1.5)

FM Nick Raptis (2305, 4.5)

Portland, Oregon Championship (7) 2008

1.e4 e6 2.d4 d5 3.♗c3 ♗f6 4.♗g5 ♗e7
5.e5 ♗fd7 6.♗xe7 ♖xe7 7.f4 a6 8.
♗f3 c5 9.♖d2 ♗c6 10.dxc5 ♖xc5 11.
O-O-O b5 12.♗e2 b4 13.♗ed4 ♗xd4
14.♗xd4 a5 15.♗b5 O-O 16.♗xd7 ♗xd7
17.♗b1 a4 18.g4 f6 Draw

Sicilian Closed

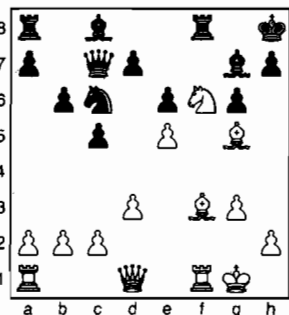
NM James Bricher (2244, 4.0)

Raleigh Foster (1977, 3.0)

Portland, Oregon Championship (7) 2008

1.e4 c5 2.♗c3 ♗c6 3.g3 g6 4.♗g2 ♗g7
5.d3 e6 6.f4 ♗ge7 7.♗f3 O-O 8.♗e3
♗d4 9.O-O ♗ec6 10.e5 f6 11.♗e4 fxe5

12.fxe5 ♖xf3+ 13.♙xf3 b6 14.♙g5 ♖c7
15.♖f6+ ♖h8



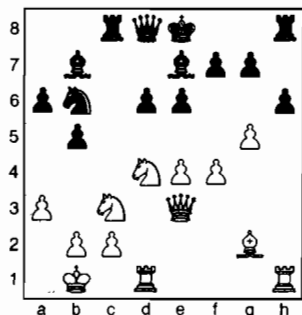
16.♙e4 ♖xe5 17.♖xh7 ♖xf1+ 18.♖xf1
♖xh7 19.♖h5+ ♖g8 20.♙xg6 ♖xb2
21.♖e1 ♖e5 22.♙h7+ ♖f8 23.♖g1
♖d4+ 24.♙e3 ♖g4 25.♖f1+ ♖e7 26.
♖f7+ ♖d6 27.♖xg4 ♖xg4 28.♙e4 ♖b8
29.♖xg7 ♖xe3 30.♖g8 ♖c7 31.h4 ♙b7
32.♖xb8 ♖xb8 33.h5 ♙xe4 34.dxe4
♖g4 35.♖g2 ♖c7 36.♖h3 ♖f6 37.♖h4
♖d6 38.♖g5 ♖e7 39.♖g6 ♖xh5 40.
♖xh5 d5 41.♖g5 d4 42.e5 ♖f7 43.a4
♖g7 44.g4 a6 45.♖f4 b5 46.axb5 axb5
47.♖f3 ♖g6 48.♖f4 ♖h6 49.♖g3 ♖g5
50.♖f3 b4 0-1

Sicilian Najdorf

FM Corey Russell (2205, 2.5)
Daniel Gay (1980, 1.5)

Portland, Oregon Championship (7) 2008

1.e4 c5 2.♖f3 d6 3.d4 cxd4 4.♖xd4 ♖f6
5.♖c3 a6 6.♙g5 e6 7.♖d3 b5 8.a3 ♖bd7
9.O-O-O ♙b7 10.f3 ♙e7 11.h4 ♖c8
12.g4 ♖c5 13.♖e3 h6 14.♙xf6 ♙xf6
15.f4 ♙xh4 16.♖b1 ♙e7 17.♙g2 ♖d7
18.g5 ♖b6



19.g6 O-O 20.gxf7+ ♖xf7 21.♖xe6 ♖c4
22.♖g3 ♖a5 23.♖d5 ♖d2+ 24.♖c1
♙xd5 25.exd5 ♙f6 26.♖xd2 ♙xb2+
27.♖d1 ♙c3 28.♙e4 ♖c4 29.♖g6
♖xe4 30.♖xe4 ♙xd2 31.♖xh6 ♖e7
32.♖h7+ ♖f7 33.♖xg7+ ♖e8 34.♖h8+
♖d7 35.♖c5+ dxc5 36.♖g4+ ♖c7
37.♖c8+ ♖b6 38.♖c6+ 1-0

French Rubinstein

NM Landon Brownell (2249, 4.5)
Michael Janniro (2030, 2.0)

Portland, Oregon Championship (7) 2008

1.e4 e6 2.d4 d5 3.♖d2 dxe4 4.♖xe4 ♙e7
5.♖f3 ♖f6 6.♖xf6+ ♙xf6 7.c3 O-O
8.♙d3 ♖d7 9.♙f4 c5 10.O-O cxd4
11.cxd4 g6 12.♖c1 ♖b6 13.♙c7 ♖d5
14.♖c2 ♖h5 15.♙xb6 axb6 16.a3 ♙d7
17.♙e4 ♙b5 18.♖fe1 ♖ad8 19.♖c7
♙c6 20.♙xc6 bxc6 21.♖xc6 ♖d5 22.h3
♖fd8 23.b4 ♙xd4 24.♖xd4 ♖xd4
25.♖xb6 ♖d3 26.a4 ♖g5 27.♖h1 ♖d4
28.a5 ♖h4 29.♖b8+ ♖g7 30.♖e5+ ♖h6
31.a6 ♖d5 32.♖b8 ♖xf2 33.♖f1 ♖e2
34.♖f4+ ♖g7 35.♖xf7+ ♖h6 36.♖f4+
♖g5 37.♖f2 ♖d1+ 38.♖xd1 ♖xd1+
39.♖h2 ♖d7 40.h4 1-0

Round Eight

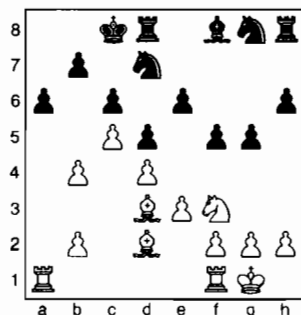
QGD Slav

NM Radu Roua (2209, 5.5)

NM James Bricher (2244, 4.0)

Portland, Oregon Championship (8) 2008

1.d4 d5 2.♖f3 c6 3.e3 ♙f5 4.c4 e6
5.♖b3 ♖b6 6.c5 ♖xb3 7.axb3 ♙xb1
8.♖xb1 ♖d7 9.b4 a6 10.♖a1 O-O-O
11.♙d2 h6 12.♙d3 f5 13.O-O g5



14.b5 axb5 15.♖a8+ ♖b8 16.♖e5 ♖e8
17.g4 fxg4 18.♖f7 ♙g7 19.♖d6+ 1-0

French Winawer

Raleigh Foster (19772000, 4.0)

NM Landon Brownell (2249, 5.5)

Portland, Oregon Championship (8) 2008

1.e4 e6 2.d4 d5 3.♖c3 ♙b4 4.e5 c5 5.a3
♙xc3+ 6.bxc3 ♖e7 7.♖g4 O-O 8.♖f3
♖bc6 9.♙d3 f5 10.exf6 ♖xf6 11.♖h5
g6 12.♖h4 ♖f5 13.♙xf5 exf5 14.O-O
♖f7 15.♖g3 ♖f6 16.♙f4 cxd4 17.cxd4
♖xd4 18.♖xd4 ♖xd4 19.♖ad1 ♖c4
20.h4 ♙d7 21.h5 ♖f6 22.♖fe1 ♖e8
23.♖xe8+ ♙xe8 24.♖e1 ♖c6 25.♖e3
♙f7 26.♖xa7 Draw

English Opening

Michael Janniro (2030, 2.0)

FM Corey Russell (2205, 3.5)

Portland, Oregon Championship (8) 2008

1.c4 e5 2.♖c3 ♖f6 3.g3 d5 4.cxd5 ♖xd5
5.♙g2 ♖b6 6.♖f3 ♖c6 7.d3 ♙e7 8.O-O
O-O 9.♙e3 ♙e6 10.a3 f5 11.b4 ♙f6
12.♖c1 ♖d4 13.♙xd4 exd4 14.♖a4
♖xa4 15.♖xa4 ♖f7 16.♖fe1 a6 17.♖c2
♖d7 18.♖d2 ♙d5 19.♙xd5 ♖xd5
20.♖c4 ♖d8 21.♖xd5 ♖xd5 22.♖c4
♖f8 23.♖ec1 c6 24.♖1c2 g6 25.♖c5
♖xc5 26.♖xc5 ♖d7 27.♖b3 ♖e8
28.♖c4 ♖d8 29.♖c5 ♖e7 30.♖f1 ♖c7
31.♖b3 ♖d7 32.♖e1 b6 33.♖d2 ♖d5
34.♖c2 ♙e7 35.♖c4 ♙f6 36.♖c2 ♙e7
Draw

King's Indian Fianchetto

FM Nick Raptis (2305, 5.0)

Daniel Gay (1980, 1.5)

Portland, Oregon Championship (8) 2008

1.d4 ♖f6 2.♖f3 g6 3.g3 ♙g7 4.♙g2 d6
5.O-O-O O6.c4 ♖bd7 7.♖c3 e5 8.h3 a6
9.e4 b5 10.cxb5 axb5 11.b4 c6 12.♙e3
♖e8 13.♖d2 ♙b7 14.♖fd1 exd4
15.♙xd4 ♖e5 16.♖c2 ♖xf3+ 17.♙xf3
♖e7 18.♖ac1 ♖d7 19.♙xg7 ♖xg7
20.♖d2 ♖e5 21.♙e2 ♖ad8 22.f4 ♖c4
23.♖d4+ ♖g8 24.♙xc4 bxc4 25.♖xc4
d5 26.exd5 ♖e3+ 27.♖g2 cxd5 28.♖d4
♖e6 29.f5 ♖xf5 30.♖e1 ♖c8 31.♖xe8+
♖xe8 32.♖f1 ♖e6 33.♖a4 ♖e4+
34.♖xe4 ♖xe4 35.a3 ♖e2+ 36.♖f2 d4+
37.♖f1 ♖e3 38.♖c5 ♙d5 39.a4 ♙c4+
40.♖g2 ♙d5+ 41.♖h2 h5 42.♖g1
♖xg3+ 43.♖f1 ♙c4+ 44.♖e1 ♖xh3
45.b5 ♖h1+ 46.♖d2 ♙xb5 47.axb5
♖b1 48.♖d3 ♖xb5 49.♖xd4 ♖b1
50.♖e4 ♖a1 51.♖e5 ♖a5+ 52.♖d4 f5
53.♖g5 ♖g7 54.♖b2 ♖h6 55.♖f3 h4
56.♖b8 g5 57.♖h8+ ♖g7 58.♖h5 ♖f6
59.♖h6+ ♖g7 60.♖b6 f4 61.♖e5 ♖h7
... Draw

Modern Defense

Michael Morris (2044, 2.0)

Gunther Jacobi (1940, 2.0)

Portland, Oregon Championship (8) 2008

1.e4 g6 2.d4 ♙g7 3.♖c3 d6 4.♙e3 a6
5.♖d2 ♖d7 6.O-O-O b5 7.f4 ♖gf6 8.e5
♖g4 9.♖f3 ♖xe3 10.♖xe3 O-O 11.h4
b4 12.♖e4 ♖b6 13.h5 ♖d5 14.♖d2
♙g4 15.♙e2 c6 16.g3 ♖a5 17.♖b1
♖ab8 18.♖a1 ♖a4 19.hxg6 hxg6
20.♖fg5 ♖b5 21.b3 ♖a3 22.♙xg4 ♖a5
23.c4 ♖c3 24.♖xc3 bxc3 25.♖h2 ♖b8

26. ♖e6 ♗b2+ 27. ♗xb2 cxb2+ 28. ♗xb2
fxe6 29. ♖xe6 c5 30. ♖xg7 ♗xg7 31. d5
♖a4 32. a3 ♖xc4 33. ♖he1 g5 34. exd6
exd6 35. fxg5 ♖g4 36. ♖d3 ♖xg5 37.
♗c3 ♗f7 38. ♖e6 ♖xd5 39. ♖xd6 ♖xd3+
40. ♖xd3 ♗e6 41. ♗c4 ♖c8 42. g4 ♖g8
43. ♗xc5 ♖xg4 44. ♖d6+ ♗e5 45. ♖xa6
♖g3 46. b4 ♖c3+ 47. ♗b5 ♗d5 48. a4
♖c8 49. a5 ♖b8+ 50. ♖b6 1-0

Round Nine

French Tarrasch

Daniel Gay (1980, 2.0)

Michael Janniro (2030, 2.0)

Portland, Oregon Championship (9) 2008

1. e4 e6 2. d4 d5 3. ♖d2 ♖f6 4. e5 ♖fd7
5. ♖d3 c5 6. c3 ♖c6 7. ♖gf3 ♗b6 8. O-O
cxd4 9. cxd4 ♖xd4 10. ♖xd4 ♗xd4
11. ♖f3 ♗b6 12. ♗a4 ♗b4 13. ♗c2 h6
14. ♖d2 ♗b6 15. ♖ac1 ♖e7 16. ♗a4 a5
17. ♖b5 ♗d8 18. b4 O-O 19. ♖xc8 ♖xc8
20. ♖xd7 ♖c7 21. ♖b5 ♖xb4 22. ♖xb4
axb4 23. ♗xb4 ♖c2 24. a4 ♗c7 25. ♖d3
♖c3 26. ♖b5 ♖c8 27. h3 ♗b6 28. ♗e7
♖3c7 29. ♗h4 ♖c3 30. ♗e7 ♖3c7
31. ♗h4 ♖c3 Draw

Scotch Gambit

NM Landon Brownell (2249, 6.0)

NM Radu Roua (2209, 6.5)

Portland, Oregon Championship (9) 2008

1. e4 e5 2. ♖f3 ♖c6 3. d4 exd4 4. ♖c4
♖c5 5. c3 ♖f6 6. e5 d5 7. ♖b5 ♖e4
8. cxd4 ♖b4+ 9. ♖d2 ♖xd2 10. ♖bxd2
♖d7 11. ♖xc6 ♖xc6 12. O-O a5 13. ♗c2
O-O 14. ♖fe1 ♖e8 15. ♖e3 ♖a6 16. ♖c1
a4 17. a3 ♖a5 18. ♗f5 ♖d7 19. ♗d3 g6
20. b4 axb3 21. ♖xb3 ♖b6 22. ♖c5 ♖f5
23. ♗b3 ♖xc5 24. ♖xc5 ♖b6 25. ♖b5
♖xb5 26. ♗xb5 ♖c8 27. h3 ♖e6 28. ♖c3
♖b6 29. ♗a5 ♖e6 30. ♗h2 ♗d7 31. ♖g5
♗g7 32. ♖xe6+ ♗xe6 33. ♖xc7 ♖b2
34. ♗c3 ♖xf2 35. ♖xb7 ♗f5 36. ♗g3
♖d2 37. ♖b6 ♖xd4 38. ♖f6 ♗e4 39. ♗g5
h6 40. ♖xf7+ Draw

Semi-Slav Botvinnik

FM Corey Russell (2205, 4.0)

Raleigh Foster (1977, 4.5)

Portland, Oregon Championship (9) 2008

1. d4 d5 2. ♖f3 ♖f6 3. c4 e6 4. ♖c3 c6
5. ♖g5 dxc4 6. e4 b5 7. e5 h6 8. ♖h4 g5
9. ♖xg5 hxg5 10. ♖xg5 ♖bd7 11. exf6
♗a5 12. ♖e2 ♖b7 13. ♖f3 O-O-O 14.
O-O ♖h6 15. ♖xh6 ♖xh6 16. ♗e2 ♗c7
17. h3 ♖g8 18. ♗h1 ♗f4 19. ♗e3 ♗h4

20. ♗h2 ♖xf6 21. ♖e4 ♖xg2+ 22.
♖xg2 ♖g4+ 23. ♗g1 ♖xe3 24. fxe3 f5
25. ♖f4 ♗e7 26. ♖c5 e5 27. ♖xf5 exd4
28. exd4 ♗e3+ 29. ♗h2 ♗xd4 30. ♖af1
♗xb2 31. ♖1f2 ♗d4 32. ♖xb7 ♗xb7
33. ♖xb5+ ♗a6 34. ♖bb2 ♖f6 35.
♖fe2 c3 36. ♖bc2 ♗d1 37. ♖h1 ♖d6
38. ♖f3 ♖f6 39. ♖g4 ♗d4 40. ♗g2
♖d6 41. ♖c1 ♖d5 Draw

Sicilian Closed

NM James Bricher (2244, 4.0)

Michael Morris (2044, 3.0)

Portland, Oregon Champ. (9) 2008

1. e4 c5 2. ♖c3 ♖c6 3. g3 g6 4. ♖g2
♖g7 5. d3 d6 6. f4 e6 7. ♖f3 ♖ge7 8.
O-O O-O 9. ♖e3 ♖d4 10. e5 ♖ef5
11. ♖f2 dxe5 12. fxe5 ♖xf3+ 13. ♗xf3
♖xe5 14. ♖xc5 ♖d4+ 15. ♖xd4 ♖xd4
16. ♗f2 f5 17. ♖d5 ♖c6 18. ♖e3 ♖d7
19. ♖c4 ♗c7 20. ♖ae1 b5 21. ♖xc6
♖xc6 22. ♖e5 ♖d5 23. ♖e2 ♖ac8
24. c4 ♖a8 25. h4 bxc4 26. dxc4 ♖fd8
27. ♗h2 ♖d6 28. b4 ♖cd8 29. ♖fe1
♖d4 30. a3 ♖e4 31. ♖xe4 ♖xe4 32.
♗f4 ♗d6 33. ♖xe4 fxe4 34. ♗f7+ ♗h8
35. ♗f6+ Draw

French Steinitz

Gunther Jacobi (1940, 2.0)

FM Nick Raptis (2305, 5.5)

Portland, Oregon Champ. (9) 2008

1. ♖c3 d5 2. e4 e6 3. ♖f3 ♖f6 4. e5
♖fd7 5. d4 c5 6. dxc5 ♖c6 7. ♖f4 ♖xc5
8. ♖d3 f6 9. exf6 ♗xf6 10. ♖g5 ♗f7
11. ♖h4 O-O 12. O-O ♗h5 13. ♖g3 ♖f6
14. ♖e1 ♖d7 15. a3 a6 16. ♗e2 ♖ae8
17. ♖e5 ♖c8 18. ♖xc6 bxc6 19. ♖a4
♖a7 20. h3 e5 21. ♖xe5 ♖g4 22. hxg4
♖xg4 23. ♗d2 ♖xf2 24. ♗xf2 ♖xf2+
25. ♗xf2 ♖xe5 26. ♖c3 ♖xe1 27.
♖xe1 ♖f5 28. ♖xa6 ♖xc2 29. ♖b7
♗f7+ 0-1

WCL cont'd from page 3

In a two-game playoff match, Dan Wade defeated Oliver Morris to win the Fifth NE Seattle Invitational. Both scored 5.5-2.5 in the five-player event. The event was held in the players' homes.

A report and crosstable for the Idaho Open can be found in this issue. The top three on the crossable, in tiebreak order, were Dr. Peter Lapiken of Missoula, Viesturs Seglins and Jim McCormick, both from Seattle. All had scored 4-1. Eighteen players took part in the top section. The thirteen-player B Section was won by George Raso of Boise.

No crosstable was given for the Golden Rose tournament held in the Portland Oregon YMCA, but round by round results were. Arthur Dake and Olaf Ulvestad tied at 4.5-0.5. They drew in round four. 24 players took part.

Washington's McNeil Island Penitentiary was visited by a group from the Olympia Chess Club; the inmates won 12.5-3.5. On the east side, prisoners from the Walla Walla Penitentiary beat a group from Richland 10.5-3.5.

Charles Griffiths of Seattle won the eleven-player Oregon Junior with a perfect 5-0 score. Griffiths was the current WA Junior Champion. Six of the players were from Seattle. Clark Harmon of Portland was second at 4-1, losing to Griffiths in round three. A report was made of the WA/OR Junior All Stars team trip to Idaho and California. The team was made up of Phil Moormann and Buz Eddy of West Seattle, Chris Napjus and Jim Munro of Highline plus Bob Brown of Dundee, Oregon. They played March 29-April 5 in Nampa, Boise, Twin Falls, Pocatello, and Rupert, all in Idaho. The California matches were in N. Hollywood, San Francisco,

and San Jose. West Seattle HS won the 1958 Seattle High School Championship.

Ulvestad annotated a couple of postal chess games. The top player on the postal rating list was Coubrough. ■



ALLEN SMITH
CHESS LESSONS

USCF A PLAYER
2006 PUGET SOUND CHAMPION

(253) 230-3736 • CHARTERINV@COMCAST.NET

Games from the National Open

This year's National Open in Las Vegas attracted 720 players, including about three dozen from the Northwest. The top scorer was Ata Moshiri, whose 5.5 points in the 154-player U1800 Section placed him in a tie for second-third. He accomplished this feat by defeating WCF Tournament Coordinator Dan Mathews in the final round of the six-round event.

Others who finished at 4.5 along with Mathews were Larry Hubbell (U1800) and Michael Hosford (U2000). Zachary Countryman and Fred Kleist scored four points in the 143-player U2000 Section. FM Nick Raptis and Expert Joshua Sinanan topped out at 3.5 in the Open Section, while Dereque Kelley (U2200), Richard Banner (U2000), Job Thykuttathil (U1800), and Jacob Jensen (U1400) did the same in their respective sections.

Another result of note was Expert Gil Lapid Shafirri's draw with GM Gata Kamsky in a 21-board simul. Kamsky gave up only two draws in the event held the day before the tournament. A G/10 tournament was also held that day. NM Carl Haessler and Expert Dereque Kelley scored four out of six in that 100-player event.

King's Indian Classical

GM Gata Kamsky (2782)

Russell Miller (1686)

Las Vegas, Kamsky simul 2008

1.d4 ♘f6 2.c4 g6 3.♘c3 ♗g7 4.e4 d6 5.♘f3 O-O 6.♗e2 ♗g4 7.O-O c5 8.d5 ♘bd7 9.♗e3 ♗xf3 10.♗xf3 ♘e5 11.♗e2 ♖c8 12.h3 a6 13.a4 ♘ed7 14.a5 b6 15.axb6 ♘xb6 16.f4 a5 17.♖c2 e5 18.f5 ♖d7 19.g4 a4 20.g5 ♘e8 21.f6 ♗xf6 22.gxf6 ♖xh3 23.♖f3 ♖g4+ 24.♘h2 ♘xf6 25.♖g1 1-0

Budapest Gambit

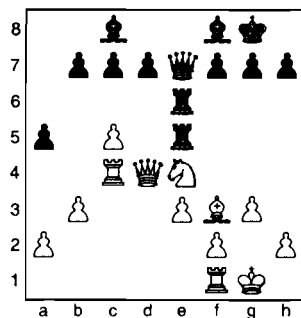
GM Gata Kamsky (2782)

Gil Lapid Shafirri (2118)

Las Vegas, Kamsky simul 2008

1.d4 ♘f6 2.c4 e5 3.dxe5 ♘g4 4.♘f3 ♗c5 5.e3 ♘c6 6.♘c3 ♘gxe5 7.♗e2

O-O 8.O-O ♘xf3+ 9.♗xf3 ♘e5 10.b3 a5 11.♗b2 ♖e8 12.♘e4 ♗f8 13.c5 ♖a6 14.♖c1 ♖h4 15.♗xe5 ♖xe5 16.g3 ♖e7 17.♖d4 ♖ae6 18.♖c4



18...b5 19.cxb6 c5 20.♘xc5 ♖xc5 21.♖xc5 ♖xc5 22.♖xc5 ♗xc5 23.♖c1 d6 24.b7 ♗xb7 25.♗xb7 ♖xe3 26.♘f1 ♖e5 27.♖c4 ♘f8 28.♖a4 ♗b6 29.b4 ♖b5 30.a3 axb4 31.axb4 ♖f5 32.f4 h6 33.♗c6 g5 34.♖a6 ♗d4 35.♗d7 ♖f6 36.f5 ♘e7 37.♗c8 d5 38.b5 ♖b6 39.♖xb6 ♗xb6 40.♘e2 ♘f6 41.g4 ♘e5 42.♘f3 f6 43.♗e6 ♘d4 44.♗f7 Draw



QGD Exchange

NM Curt Collyer (2259)

Richard Roubal (1824)

Las Vegas, National Open (1) 2008

1.d4 ♘f6 2.c4 e6 3.♘c3 d5 4.cxd5 ♘xd5 5.♘f3 ♘xc3 6.bxc3 b6 7.e4 ♗b7 8.♗b5+ c6 9.♗d3 ♖c7 10.O-O ♘d7 11.♗g5 h6 12.♗h4 ♗d6 13.e5 ♗f8 14.♘d2 g5 15.♗g3 h5 16.h4 ♗e7 17.hxg5 h4 18.♗f4 O-O-O 19.♗e4 f5 20.gxf6 ♗xf6 21.♘c4 ♘f8 22.♘d6+ ♖xd6 23.exf6 1-0

Benko Gambit

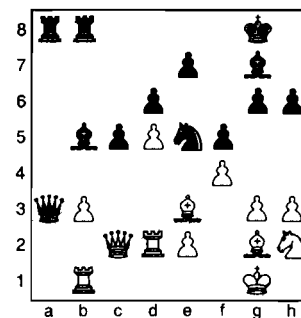
Jose Silva (2201)

Corbin Yu (2085)

Las Vegas, National Open (2) 2008

1.d4 ♘f6 2.c4 c5 3.d5 b5 4.cxb5 a6 5.bxa6 ♗xa6 6.♘c3 d6 7.g3 g6 8.♗g2 ♗g7 9.♘f3 O-O 10.O-O ♘bd7 11.h3 ♖b6 12.♖b1 ♖fb8 13.b3 ♘e8 14.♖c2 ♘c7 15.♘h2 ♘b5 16.♘b5 ♗xb5 17.♗g5 h6 18.♗e3 ♖a6 19.♖fd1 ♖xa2 20.♖e4 ♘e5 21.♖d2 ♖a3 22.f4 f5

23.♖c2



23...♘c4 24.♘f1 ♘xd2 25.♖xd2 ♖a2 0-1

English Opening

NM Carl Haessler (2211)

Marcus Pelters (2039)

Las Vegas, National Open (2) 2008

1.c4 e5 2.g3 ♘c6 3.♗g2 ♘f6 4.e4 ♗c5 5.h3 O-O 6.♘e2 ♖b8 7.♘bc3 a6 8.a3 b5 9.b4 ♗d4 10.d3 a5 11.♘xd4 ♘xd4 12.O-O axb4 13.axb4 c5 14.bxc5 b4 15.♘e2 ♖c7 16.♘xd4 exd4 17.♗f4 1-0

Sicilian Alapin

Steve Merwin (2028)

Gary Simms (2200)

Las Vegas, National Open (2) 2008

1.e4 c5 2.c3 e5 3.♘f3 ♘c6 4.♗c4 ♖c7 5.O-O ♘f6 6.♖e1 d6 7.h3 ♗e7 8.♗b3 O-O 9.d4 cxd4 10.cxd4 exd4 11.♘xd4 ♘xd4 12.♖xd4 ♗e6 13.♘c3 a6 14.♗e3 b5 15.♖ac1 ♖b7 16.♗d5 ♘xd5 17.♘xd5 ♗xd5 18.♖xd5 ♖xd5 19.exd5 ♗f6 20.b3 b4 21.♖c6 ♗c3 22.♖d1 ♖fd8 23.♗d4 ♗xd4 24.♖xd4 a5 25.f4 Draw

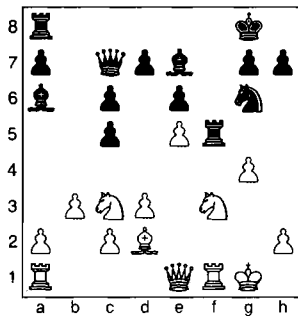
Sicilian Defense

Elliott Liu (2318)

Joshua Sinanan (2154)

Las Vegas, National Open (3) 2008

1.e4 c5 2.♘c3 ♘c6 3.♗b5 e6 4.♗xc6 bxc6 5.d3 ♘e7 6.f4 ♘g6 7.♘f3 ♗e7 8.O-O O-O 9.e5 f6 10.♖e1 ♖c7 11.♗d2 ♗a6 12.b3 fxe5 13.fxe5 ♖f5 14.g4



14... Bxf3 15. Bxf3 Qxe5 16. Bxh3 Qxg4 17. Qe4 Bxe5 18. Qc3 Bf5 19. Bxe2 Bf8 20. Bg3 Qe5 21. Bf1 Bxf1+ 22. Bxf1 Bxf1+ 23. Qxf1 Qg6 24. Qb2 d5 25. Qd2 Qd6 26. Bg2 e5 27. c4 Qc8 28. Bg5 Qf7 29. Qf3 Qf6 30. Qe1 h6 31. Bg1 Qf5 32. Qd2 d4 33. Qe1 Qf4 34. Bg3 g5 35. Qg2 h5 36. Qc1 h4 37. Qxf4 exf4 38. Bg1 f3 39. Qe1 g4 40. Qf2 Qxh2 41. Bd1 Qg3+ 42. Qg1 h3 0-1

Sicilian Grand Prix Attack

FM Alexandre Kretchetov (2400)
NM Curt Collyer (2259)

Las Vegas, National Open (4) 2008

1.e4 c5 2.Qc3 Qc6 3.f4 e6 4.Qf3 d5 5.Qb5 Qge7 6.exd5 exd5 7.Bxe2 Bd6 8.d4 cxd4 9.Qxd4 Qd7 10.Qe3 O-O-O 11.O-O-O Qb8 12.Qb3 Qe6 13.Qxc6 Qxc6 14.Bf2 g6 15.f5 1-0

Grünfeld Fianchetto

Corbin Yu (2085)
Elliott Liu (2318)

Las Vegas, National Open (4) 2008

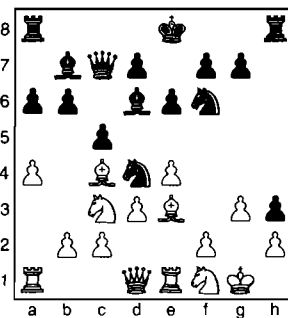
1.Qf3 Qf6 2.g3 g6 3.Qg2 Qg7 4.c4 O-O 5.O-O d5 6.cxd5 Qxd5 7.d4 Qb6 8.Qc3 Qc6 9.e3 Bc8 10.h3 e5 11.d5 Qa5 12.Qd2 Qd7 13.e4 c6 14.Qb3 Qac4 15.Qc5 Qd6 16.Bb3 Bc8 17.Qxd7 Qxd7 18.Qe3 c5 19.Bfc1 b6 20.a4 a6 21.Qh2 Bc7 22.Qf1 f5 23.exf5 gxf5 24.f4 e4 25.Bd1 Bb7 26.Qe2 b5 27.Bd2 Bbc8 28.Bg1 b4 29.Qd1 Qb6 30.Bc1 Qxa4 31.g4 Qh8 32.gxf5 Qxf5 33.Qg4 Bf7 34.Bg2 Qxe3 35.Qxe3 Bxf4+ 36.Qh1 Bc7 37.Qh5 Bd8 38.d6 Bb7 39.Qc4 Bb6 40.Qg4 Qd4 41.Bge1 Bg7 42.Bxe4 Bdg8 43.d7 Bb4 44.Qd6 Bxg4 45.Qf7+ Qg7 46.Bxg4+ Bxg4 47.hxg4 Qxf7 48.Be2 Bd8 49.Bf1+ Qg6 50.Be6+ Qg5 51.Bf5+ Qxg4 52.Bf7 Qxb2 53.Be8 Qf6 54.Bxf6 Bxd7 55.Bg8+ Qh5 56.Bf5+ Draw

Sicilian Defense

Michael Aigner (2273)
Joshua Sinanan (2154)

Las Vegas, National Open (5) 2008

1.e4 c5 2.Qc3 e6 3.Qge2 Qc6 4.Qg3 Qf6 5.Qb5 Bc7 6.O-O Qd4 7.Be1 Qd6 8.a4 h5 9.d3 h4 10.Qf1 h3 11.g3 a6 12.Qc4 b6 13.Qe3 Qb7



14. Qxd4 cxd4 15. Qb1 Qxe4 16. dxe4 Bxc4 17. Qa3 Bc5 18. Bd3 Bc8 19. Qd2 e5 20. Bbc1 Bc6 21. Qac4 Qc7 22. Qf3 f6 23. c3 d5 24. Qcd2 dxe4 25. Qxe4 dxc3 26. Bxc3 Bb7 27. Bc2 O-O 28. a5 Qb8 29. axb6 Bxc3 30. bxc3 Bc6

31. Bb3+ Qh8 32. Qh4 f5 33. Bb1 fxe4 34. Bb5+ Qg8 35. Qg6 Be8 36. Qd1 Bb6 37. c4 Qd6 38. c5 Qxc5 39. Bc1 Qxb6 40. Bb1 0-1

King's Indian Classical

Joshua Sinanan (2154)
John Bryant (2371)

Las Vegas, National Open (6) 2008

1. Qf3 Qf6 2. c4 g6 3. Qc3 Qg7 4. e4 d6 5. d4 O-O 6. Qe2 e5 7. O-O Qc6 8. d5 Qe7 9. b4 Qe8 10. c5 f5 11. Qg5 h6 12. Qe6 Qxe6 13. dxe6 fxe4 14. Qc4 Qf6 15. cxd6 cxd6 16. Bb3 d5 17. Qe2 Bb6 18. b5 Bxe6 19. Qa3 Bfd8 20. Qxe7 Bxe7 21. Qxd5 Bxd5 22. Bbd1 Qh7 23. Bxd5 Qxd5 24. Bxd5 Bd8 25. Bxe4 Bd4 26. Bc2 e4 27. Bd1 e3 28. f3 h5 29. Bxd4 Qxd4 30. g3 Bb4 31. Bb1 h4 32. Qg2 Bb6 33. Bb3 Bb7 34. gxf4 Qh6 35. Bb4 Bb6 36. Qd3 Qb6 37. f4 a6 38. bxa6 bxa6 39. Qf3 a5 40. Bb5 Bxe5 41. fxe5 Qg7 42. Qe2 Qd8 43. Qxe3 Qxh4 44. Qe4 Qe1 45. Qd5 Qf7 46. Qd6 Qb4+ 47. Qd7 g5 48. Qh5+ Qf8 Draw

Leanne Hwa is the 2008 WA Polgar Representative

by Xiaoli Wang

Washington's Polgar Qualifier tournament for girls was held on May 17-18 at two Seattle-area public libraries. The four-round, G/90 Swiss event was organized by WCF Scholastic Coordinator David Hendricks. At the conclusion of the two-day competition, 10-year old chess newcomer and dark-horse Leanne Hwa from Stevenson Elementary in Bellevue emerged clear first at 3.5, finishing ahead of several older and more experienced players.

She will thus represent Washington State at the prestigious Susan Polgar National Invitational for Girls to be held this summer, July 27 through August 1, at Texas Tech University in Lubbock. Having learned how to play chess just over one year ago, Leanne was USCF-unrated prior to the 2008 National Elementary (K-6) Championship a week earlier in Pittsburgh PA, where she finished second (6.5/7) in the K-6 Unrated section. She also won the Girls Under 11 section of the Susan Polgar World Open for Girls with a perfect score of 5.0 at the recently concluded Las Vegas International Chess Festival.

From the IBM Typewriter of JAMES SCHROEDER, 3011 E. 9th Street, Apt 15,
Vancouver WA 98661; phone (360) 258-9401 "The most trusted name in chess"

Minimum Order \$20.00 I pay the postage

- THE MODERN CENTER ATTACK IN THE RUY LOPEZ by Salome & Bickford 1993 1.e4 e5 2. Nf3 Nc6 3.Bb5 a6 4.Ba4 Nf6 5. 0-0 Be7 6 d4! I recommend you play 5 d4! and if exd4 then 6. 0-0 limp cover sixty complete games diagrams PRICE \$15.00
- THE ROMANTIC KING'S GAMBIT by Santasiere and Ken Smith A magnificent book! copyright 1982 More than 138 complete games Plastic cover PRICE \$20.00
- THE GAMES OF JOSE RAUL CAPABLANCA Revised 2nd Edition Caparres copyright 1994 1200 games! Complete cross-tables Great indices Algebraic Very few diagrams Plastic cover Fantastic bargain! PRICE \$20.00
- THE VIENNA GAME AND GAMBIT by Santasiere and Smith copyright 1992 plastic cover 1.e4 e5 2.Nc3 Many complete games Great Book Beautiful Printing PRICE \$15.00
- CJS PURDY'S FINE ART OF CHESS ANNOTATION Volume Two copyright 2001 121 complete games & many articles by one of the greatest all-time chess writers Plastic Cover Algebraic The best book I know of for any player not a Master PRICE \$24.00
- THE GORING GAMBIT by Smith and Hall copyright 1994 1.e4 e5 2.Nf3 Nc6 3 d4 exd4 4.c3 Plastic cover 155 pages Accepted and Declined variations PRICE \$12.00
- WINNING WITH THE KING'S GAMBIT Volume Two Declined by Andrew Soltis copyright 1993 Plastic cover Beautifully produced Algebraic Many complete games PRICE \$12.00
- BUDAPEST GAMBIT - THE FIGHTING FAJAROWICZ by Tim Harding copyright 1996 Beautifully produced Plastic Cover 222 pages 1.d4 Nf6 2.c4 e5 3.dxe5 Ne4?! Also 3.e3 More than 372 complete games PRICE \$15.00
- 1001 BRILLIANT WAYS TO CHECKMATE by Reinfeld copyright 1955 plastic cover Diagrams with solutions in Descriptive Notation PRICE \$12.00
- MAX LANGE ATTACK AND THE ANTI-MAX LANGE by Smith & Hall copyright 1991 Plastic Cover 1.e4 e5 2. Nf3 Nc6 3. Bc4 Nf6 4. d4 exd4 5. 0-0 Bc4 6 e5 d5 7. exf6 dxc4 8. Re1+ Be6 9. Ng5 Qd5 10. Nc3 Qf5 11. Nce4 is the main line They analyze alternatives Many complete games PRICE \$12.00
- ESSENTIAL CHESS ENDINGS EXPLAINED MOVE BY MOVE Volume Two Ken Smith copyright 1992 292 pages! Plastic cover Algebraic PRICE \$12.00
- THE EVANS GAMBIT REVOLUTION by Richard Moody copyright 1995 Plastic Cover Algebraic 1.e4 e5 2.Nf3 Nc6 3. Bc4 Bc5 4. b4! Ninety complete games! PRICE \$12.00
- MODERN ART OF ATTACK by Smith and Hall 1988 Era of Tal, Fischer, Kasparov Plastic Cover 170 pages complete games annotated NO INDEX! PRICE \$12.00
- HOW TO WIN QUICKLY AT CHESS by John Donaldson copyright 1990 76 short games Algebraic Limp cover one diagram per game PRICE \$12.00
- MASTERING TACTICAL IDEAS by Minev copyright 2000 Algebraic A magnificent book! 234 pages Superb selection of hundreds of complete games and combinations Excellent printing and diagrams PRICE \$15.00
- TEST YOUR OPENING, MIDDLEGAME AND ENDGAME PLAY Vol Two by Smith & DeVault copyright 1994. Solitaire chess 35 games, plastic cover Algebraic. PRICE \$15.00
- HOW TO ATTACK IN CHESS by Gary Lane copyright 1996 Some complete games Algebraic some combinational positions limp cover PRICE \$12.00
- THE ART OF BISGUIER volume one by GM Arthur Bisguier & Newton Berry copyright 2003 Games of the Grandmaster 1945 to 1960 with notes and diagrams a number of black and white photos Plastic cover Algebraic Notes by Bisguier PRICE \$22.00
- THE ART OF BISGUIER volume two by GM Arthur Bisguier & Newton Berry copyright 2008 Games of the Grandmaster 1961 to 2003 with notes and diagrams a few black and white photos Plastic cover Algebraic Notes by Bisguier PRICE \$30.00

Games from the Keres Memorial

IM Georgi Orlov shared first-second in the 33rd Keres Memorial with FM Bindi Cheng, who had bested Orlov in round four; both scored 5.5 points in the seven-round Open Section. In the six-round U2000 Section, Michael Hosford had 4.5 points, good for a portion of second-fourth. Seventy-nine players turned out for the event, including five from Washington and two from Oregon.

NB: Ratings are CFC, except that USCF ratings are provided for Ricky Selzler and Charles Cadman.

Anglo-Benoni Kasparov Gambit

IM Georgi Orlov (2563)

NM Charles Cadman (2262)

Vancouver, Keres Memorial (3) 2008

1.d4 ♘f6 2.c4 c5 3.♗f3 cxd4 4.♗xd4 e5 5.♗b5 d5 6.cxd5 ♗c5 7.e3 O-O 8.♗5c3 e4 9.a3 ♗f5 10.♗e2 ♗bd7 11.g4 ♗g6 12.h4 h6 13.♗d2 ♗e7 14.b4 ♗d6 15.♗b2 a5 16.bxa5 ♗xa5 17.♗c4 ♗aa8 18.♗b5 ♗e8 19.♗cxd6 ♗xd6 20.♗d4 f6 21.♗b4 ♗a6 22.♗xd6 ♗xd6 23.a4 ♗e5 24.♗a3 ♗fd8 25.♗d4 ♗d7 26.♗xd6 ♗xd6 27.♗d1 ♗c8 28.a5 ♗c2 29.h5 ♗h7 30.♗b6 ♗a3 31.♗d8+ ♗f8 32.♗xf8+ ♗xf8 33.d6 ♗e8 34.♗b5+ ♗d8 35.O-O ♗c5 36.♗b1 ♗xg4 37.♗fc1 ♗g5 38.♗f1 ♗f5 39.d7 ♗h2+ 40.♗e1 ♗g1+ 41.♗d2 ♗f3+ 42.♗e2 ♗xc1 43.♗xc1 ♗xd7 44.♗d1 ♗e5 45.♗d4 f5 46.♗d5 ♗c6 47.a6 1-0

King's Indian Gligoric

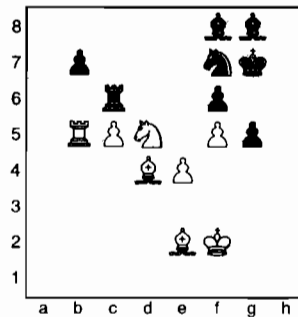
IM Vicente Lee (2356)

Ricky Selzler (2156)

Vancouver, Keres Memorial (3) 2008

1.d4 ♗f6 2.♗f3 g6 3.c4 ♗g7 4.♗c3 O-O 5.e4 d6 6.♗e2 e5 7.♗e3 ♗g4 8.♗g5 f6 9.♗h4 ♗a6 10.O-O g5 11.♗g3 ♗h6 12.dxe5 dxe5 13.♗xd8 ♗xd8 14.♗fd1 ♗e6 15.a3 c6 16.♗d2 ♗f7 17.f3 ♗f8 18.b4 ♗dc8 19.c5 ♗c7 20.♗c4 ♗d8 21.♗f2 ♗xd1+ 22.♗xd1 ♗d8 23.♗c1 ♗d7 24.♗e3 ♗e7 25.♗f2 ♗f8 26.♗a5 ♗d8 27.g3 ♗g7 28.f4 exf4 29.gxf4 h6 30.f5 ♗g8 31.♗b1 ♗f8 32.a4 a6 33.h4 ♗g7 34.hxg5 hxg5 35.♗c4 ♗f7 36.b5 axb5 37.axb5 ♗xb5 38.♗xb5 cxb5

39.♗b6 ♗d8 40.♗d5 ♗f8 41.♗xb5 ♗c8 42.♗d4 ♗c6



43.♗e3 ♗d8 44.♗c4 ♗a6 45.♗b6 ♗xb6 46.cxb6 ♗xd5 47.♗xd5 ♗d6 48.♗f3 ♗e7 49.♗g4 ♗h6 50.e5 fxe5 51.♗xe5 ♗c5 52.♗c7 ♗e7 53.♗f3 ♗g7 54.♗e5+ ♗f8 55.f6 ♗c5 56.♗c7 ♗e8 57.♗g4 ♗d7 58.♗xg5 ♗e6+ 59.♗xe6+ ♗xe6 60.♗g6 ♗b4 61.f7 ♗c5 62.♗g7 ♗a3 63.f8=♗ ♗xf8+ 64.♗xf8 ♗d7 65.♗f7 ♗c8 66.♗f6 ♗d7 67.♗e5 ♗c8 68.♗d5 ♗d7 69.♗f4 ♗c8 Draw

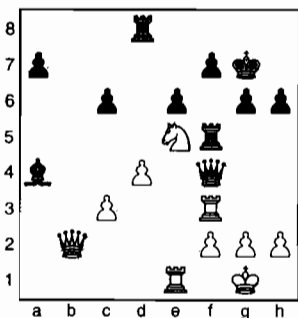
Torre Attack

FM Bindi Cheng (2360)

IM Georgi Orlov (2563)

Vancouver, Keres Memorial (4) 2008

1.♗f3 ♗f6 2.d4 e6 3.♗g5 c5 4.c3 h6 5.♗xf6 ♗xf6 6.e4 ♗c6 7.♗b5 cxd4 8.cxd4 ♗b4+ 9.♗c3 O-O 10.O-O ♗xc3 11.bxc3 d5 12.♗xc6 bxc6 13.♗e1 dxe4 14.♗d2 ♗b8 15.♗xe4 ♗f4 16.♗c5 ♗c7 17.♗e3 ♗e8 18.♗h5 ♗d8 19.♗g3 ♗d5 20.♗h4 ♗f5 21.♗e4 ♗a6 22.♗g4 g6 23.♗d1 ♗g7 24.♗c5 ♗c4 25.♗a4 ♗d5 26.♗f1 ♗f4 27.♗c2 ♗c4 28.♗e1 ♗b5 29.a4 ♗b6 30.♗d7 ♗b7 31.♗c5 ♗b8 32.♗d7 ♗d8 33.♗e5 ♗b3 34.♗b2 ♗xa4 35.♗f3



35... ♗g5 36.h4 ♗xh4 37.♗xf5 gxf5 38.♗a2 ♗b5 39.c4 ♗xd4 40.cxb5 cxb5 41.♗b3 ♗d5 42.♗g3+ ♗f6 43.♗f3 ♗b4 44.♗b8 ♗d6 45.♗h8+ ♗e7 46.♗a1 a6 47.♗e5 a5 48.♗c3 b4 49.♗e3 ♗c5 50.♗g3 ♗c3 51.♗e3 ♗a1+ 52.♗h2 a4 53.♗h4+ ♗e8 54.♗c6 ♗d7 55.♗b8+ ♗e8 56.♗c6 ♗d7 57.♗b8+ ♗e8 58.♗g3 ♗e5 59.♗h3 ♗h8 60.♗xb4 f4 61.♗c3 ♗f6 62.♗c8+ ♗d8 63.♗b5+ ♗f8 64.♗d7+ 1-0

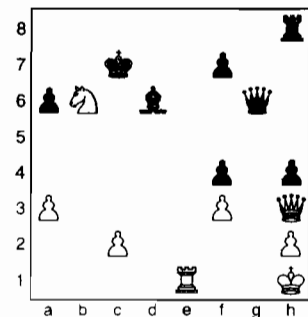
Pribyl Defense

Tarek Toubale (2173)

IM Georgi Orlov (2563)

Vancouver, Keres Memorial (5) 2008

1.e4 d6 2.d4 ♗f6 3.♗c3 c6 4.f4 ♗a5 5.♗d3 e5 6.♗f3 ♗g4 7.♗e3 ♗bd7 8.O-O h5 9.♗d2 ♗xf3 10.gxf3 ♗e7 11.a3 exf4 12.♗xf4 h4 13.b4 ♗h5 14.♗h1 ♗f8 15.♗ae1 ♗d6 16.b5 g5 17.♗e3 ♗g6 18.♗g2 ♗f4 19.♗xf4 gxf4 20.bxc6 bxc6 21.♗h3 a6 22.e5 dxe5 23.♗f5 ♗a7 24.♗xd7+ ♗xd7 25.♗xe5 ♗g6 26.♗fe1 ♗d8 27.d5 cxd5 28.♗xd5 ♗xd5 29.♗xd5 ♗d6 30.♗b6 ♗c7



31.♗d7+ ♗xb6 32.♗b1+ ♗c5 33.♗a7+ ♗d5 34.♗d1+ ♗e6 35.♗e1+ ♗e5 36.♗xa6+ ♗f5 37.♗d3+ ♗f6 38.♗a6+ ♗f5 39.♗d3+ ♗f6 40.♗a6+ Draw

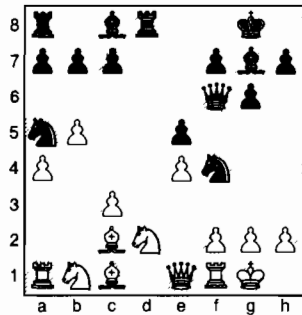
King's Indian Attack Reversed

NM Radu Roua (2321)

Ricky Selzler (2156)

Vancouver, Keres Memorial (5) 2008

1.d4 ♗f6 2.♗f3 g6 3.e3 ♗g7 4.♗d3 d6 5.O-O O-O 6.e4 ♗c6 7.c3 e5 8.dxe5 dxe5 9.a4 ♗h5 10.b4 ♗f4 11.♗c2 ♗f6 12.b5 ♗d8 13.♗fd2 ♗a5 14.♗e1



14...♙h3 15.♘f3 ♙xg2 16.♙xf4 ♙xf1
17.♗xf1 ♖xf4 18.♞bd2 ♙h6 19.♞d1

♞d6 20.♖e2 ♞ad8 21.♞b1 ♞xd1+
22.♙xd1 ♖c1 0-1

Catalan

IM Georgi Orlov (2563)

IM Vicente Lee (2356)

Vancouver, Keres Memorial (7) 2008

1.♞f3 ♞f6 2.c4 e6 3.g3 d5 4.♙g2 ♙e7
5.d4 O-O 6.♞c3 dxc4 7.♞e5 c5 8.dxc5
♖xd1+ 9.♞xd1 ♙xc5 10.♞xc4 ♞c6
11.♙xc6 bxc6 12.♙e3 ♙b4+ 13.♙d2
c5 14.a3 ♙xd2+ 15.♞xd2 ♙a6 16.♞c1
♞fc8 17.f3 ♞ab8 18.♗f2 ♗f8 19.♞c2

♗e7 20.b3 ♞d7 21.♞b2 f5 22.♞hc1
h6 23.♞c3 ♞d8 24.♞1c2 ♙b5 25.♞f1
♞b6 26.♞e3 ♞b7 27.g4 g6 28.gxf5
gxf5 29.♞g2 e5 30.♞e3 ♗f7 31.♞d2
♞e8 32.♞c3 ♞e6 33.♞e3 ♗f6 34.♞d1
♞e8 35.h4 ♗e6 36.h5 f4 37.♞ec4
♙xc4 38.♞xc4 ♞eb8 39.♞d6+ ♗e7
40.♞xh6 ♞xb3 41.♞xb3 ♞xb3 42.
♞a6 e4 43.h6 e3+ 44.♗g2 ♞b8 45.
♗h3 ♞g8 46.♞xa7 ♗e6 47.♞a6+ ♗e7
48.h7 ♞h8 49.♞h6 ♞f6 50.♗h4 ♞xh7
51.♞xh7+ ♞xh7 52.a4 ♞f6 53.a5 ♗d8
54.♞b6 ♞d5 1-0

Tacoma Chess Times

by Gary Dorfner

The Daffodil Open was held at the club in April. There were 19 entries in all. The winners were: 1st—Mike MacGregor \$106; Group 1—Paul Bartron, Howard Chen, Mark Saarenas, and Allen Smith \$16 each; Group 2—Jeff Lowther \$60, Group 3—Alexandra Botez \$55.

The Pierce County Championship was held at the club on five Friday nights in April. There were 18 players in all. The winners were: 1st (P.C. Champion for 2008) Mike MacGregor & Nhon Do \$22.50 each (a playoff match will be held to determine who gets the title); Class A—Allen Smith \$15; Class B—Larry Anderson; Class C—Logan MacGregor; Class D—Josh Putnam; Class E—Peter Marritt. Class B, C, D, and E winners each received a trophy.

The Pierce County Open was held at the club in May. There were 10 players in all. The winners were: 1st—Group 1—Paul Bartron and Howard Chen \$36 each; Group 2—Jaun LeRoux \$25.

Sicilian Sozin

FM Paul Bartron (2102)

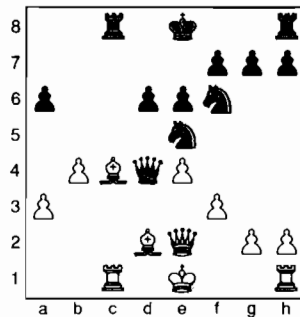
Jaun Le Roux (1723)

Tacoma, Pierce County Open 2008

Annotations by Drayton Harrison

1.e4 c5 2.♞f3 d6 3.d4 cxd4 4.♞xd4
♞f6 5.♞c3 a6 6.♙c4 e6 7.f3 b5 8.♙b3
♞bd7 9.a3 ♞c5 10.♙a2 ♙e7 11.b4!
♞cd7 12.♞c6 ♖c7 13.♞xe7 ♖xc3+
14.♙d2 ♖c7 15.♞xc8 ♞xc8 16.c4!
bxc4 17.♙xc4 ♖b6 18.♖e2 ♖d4 19.
♞c1 ♞e5

Northwest Chess



20.♙e3!

??—Bartron. White noticed that Black's Queen is trapped, but overlooked Black's next move. 20.♙b5+!? ♗e7 21.♙xa6 and 20.♙xa6!? are relatively simple wins.

20...♞xc4 0-1

White resigned because of 21.♙xd4?? ♞xc1+ 22.♗f2 ♞xh1 23.♙xe5 dxe5 24.♖xa6 O-O, when Black's two Rooks and Knight are stronger than White's Queen and passed pawns, as Paul and I proved repeatedly in the post-mortem. But Paul missed 21.O-O!! Although a piece down, White will win either the Rook or the Queen.

Slav Exchange

Stephen Buck (1738)

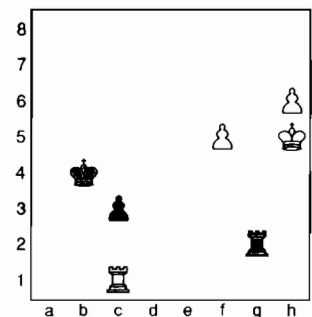
NM Michael MacGregor (2210)

Tacoma, Pierce County Open 2008

1.c4 c6 2.♞c3 d5 3.cxd5 cxd5 4.d4 ♞f6
5.♞f3 ♞c6 6.♙f4 ♙f5 7.e3 ♖b6 8.a3
♖xb2 9.♞a4 ♖c2 10.♖xc2 ♙xc2 11.
♞c5 e5 12.♞xe5 ♙xc5 13.♞xc6 bxc6
14.dxc5 ♗d7 15.♙e5 ♞he8 16.♙xf6
gxf6 17.♗d2 ♙g6 18.♙d3 ♞ab8
19.♞ab1 ♗c7 20.♞hc1 a5 21.f3 ♙xd3

22.♗xd3 ♞b5 23.a4 ♞b4 24.♞xb4
axb4 25.♞b1 ♞b8 26.e4 ♗d7 27.♞b3
♗c7 28.♗d4 ♞d8 29.♞xb4 dxe4+
30.♗xe4 ♞d2 31.♗f5 ♞xg2 32.♞h4
♞g5+ 33.♗xf6 ♞xc5 34.♞xh7 ♗b6
35.f4 ♞c4 36.f5 ♞f4 ...

And White eventually achieved the following position.



1.h7 ♞h2+ 2.♗g6 ♞g2+ 3.♗f7 ♞h2
4.♗g7 ♞g2+ 5.♗f8 ♞h2 6.♗g8 ♞g2+
7.♗h8 ♞f2 8.f6 ♗b3 9.♞g1 c2 10.♗g7
♞g2+ 11.♞xg2 c1=♖ 12.h8=♖ ♖c7+
13.f7 ♖e5+ 14.♗g8 ♖e6 15.♖b2+
♗a4 16.♖a2+ 1-0

Thirteen players took part in the Tacoma City Championship on five Friday nights in June. The winners were: 1st—Paul Bartron \$25; U2000—Drayton Harrison and Larry Anderson \$10 each; U1400—Bill Rogers \$20.

The 45th Evergreen Empire Open was held at the club in June. There were 10 players in all. The winners were: 1st—Group 1—Paul Bartron and Michael Wang \$57 each; Group 2—Johnny Recinos and Ian McPherson \$10 each. TD for all of the above events: Gary Dorfner.

July 2008

Second Harmon Memorial

by Niel Dale

Forty players turned out to participate in this tournament, including IM John Donaldson, a former PNW resident now residing in San Francisco. When the dust had settled from all the upsets, Oregon champion NM Radu Roua finished clear first with 4½ points, drawing in the final round with Donaldson.

Now, let's mention some of the upsets, starting with round one in which Portland Chess Club member Nathan Porter managed a draw against John Donaldson. Other first round surprises included George Petersen defeating Steve Buck and Mike Terrill's victory over Larry Ball. In Round Three, Matt Dalthorp won over Bill Gagnon and Steve Breckenridge defeated FM Nick Raptis, but is this an upset? Ratings of young, on-the-way-up players often trail their actual playing strength. Results in the closing rounds returned to relative normalcy.

Trailing the winner, four players scored four points each: Donaldson, Raptis, Breckenridge, and Mike Morris. Ethan Peake took the U2000 prize with 3½ points. The U1700 prizes were split three ways, with John Walton, Brett Becker, and Jeff Lehman each scoring three points. Top honors in the U1400 section went to Bill Stites, also with three points.

Also, in regards to proper chess etiquette, one should notify the TD instead of forfeiting a game. Luckily that only happened once. The Portland Chess Club extends its thanks to all who came to play, and thanks to IM John Donaldson for donating his latest book to the club library. The TD crew consisted of Mike Morris, Grisha Alpernas and Neil Dale. Let's hope for an even more successful tournament next year. ■

Northwest Organizer Grand Prix

by Eric Holcomb

On October 26, 2003, *Northwest Chess* board members decided to initiate an "Organizer Grand Prix" to reward chess promoters and organizers who sign up a large number of WCF and OCF members. The rules were a little vague, so I adopted the following scoring system:

Memberships of more than \$10 (adult, full-year junior) count as a full point regardless of whether it's a new membership or a renewal. Family, tournament and part-year junior memberships count as ½ point.

Credit goes to the primary club or organization sponsoring the event (where applicable), but I also report below the name of the primary organizer(s)/promoter(s) for each club, who also deserve a great deal of the credit.

I do not take credit for memberships/renewals obtained as part of my job as business manager, although I report memberships obtained through PayPal and other subscription services separately. These are not eligible for awards.

The results below are for calendar year 2007 events, with banking account deposits up to January 10, 2008.

The Washington Chess Federation returned to 1st place in 2007 (scoring 119.0 points), followed by the 2006 winner, the Portland Chess Club, with another strong showing at 64.5 points! The Seattle Chess Club was the 3rd place winner (and the 2nd place local club) with 38.5 points. All efforts, even those with only a few memberships, are greatly appreciated.

The acceptance of online membership payments with PayPal was again successful; up to 73.5 points in 2007 versus 44.0 points in 2006.

Northwest Chess will award the following prizes: Washington Chess Federation – one free \$25 membership, Portland Chess Club – one free \$25 membership, Seattle Chess Club – one free \$17 junior membership. It is up to the individual clubs how to use the membership awards. The business manager requests that the awards be used in calendar year 2008 to avoid the confusion associated with "carryovers." To use an award, simply include a note when you send membership payments to the business manager, and deduct the award from the amount remitted.

Let's do an even better job this year than last! As you know, many people don't renew or join until they play in a tournament; so memberships gathered by organizers at events are extremely important.

Clubs, Organizations, Individuals		
WCF	WCF board	119.0
Portland CC	Neil Dale & Grisha Alpernas	64.5
Seattle CC	Carol & Fred Kleist	38.5
OCF	OCF board, Jerry Ramey	27.5
Tacoma CC	Gary Dorfner	25.0
GP Prize Fund	Harmon Memorial donors	6.5
Chessways	Jerry Ramey	6.0
Spokane CC	David Griffin & Kevin Korsmo	6.0
	Russell Miller	4.0
Others (Subscription Services, etc)		
	PayPal	73.5
	EBSCO	11.0

NORTHWEST CHESS
WASHINGTON CHESS FEDERATION (WCF) & OREGON CHESS FEDERATION (OCF)

SUBSCRIPTION / MEMBERSHIP APPLICATION / RENEWAL FORM

Adult: \$25/year (12 issues). Adult members receive *Northwest Chess* via periodicals mail each month. Residents of OR and WA also receive a 1-year membership in the OCF or WCF.

Junior: \$17/year (12 issues). Junior members also receive *Northwest Chess* each month. Must be under age 20 at time of expiration. OR/WA residents only; state membership included.

Subscriber: \$25/year (12 issues). For clubs/organizations or for persons living outside the OR/WA area. Subscribers receive *Northwest Chess* each month. Additional postage required for foreign addresses. Inquire about special rates for libraries and school chess clubs.

Scholastic: \$10 (6 issues). Same as junior membership, except for 6 months only. Can be converted to a regular junior membership by paying the \$7 balance before expiration.

Family: \$5/year (**not a subscription – membership only**). This class of membership is open only to co-residents of an Adult or Junior member. Expires at the same time. *If first member is a junior (\$17/year), additional family member(s) must also be juniors.*

Name _____

If Junior(s), please give date(s) of birth _____

E-Mail (recommended; used for annual renewal notices and occasionally for tournament announcements)

Phone Number (optional, will not be used for telemarketing) (_____) _____

Street or P.O. Box _____

City _____ State _____ Zip _____

Country (if not USA) _____ *Please e-mail for additional postage amount.*

Membership type(s) _____ Total Membership Amount \$ _____

Washington residents only: sales tax based on location where magazine will be received.

Tax jurisdiction: City _____ or unincorporated county _____

Sales tax rate: _____%, Tax on membership amount: \$ _____, Total: \$ _____

A tax rate table is available on the Northwest Chess website. Memberships received without the correct tax will be valid for only 11 months instead of 12 (5 months for scholastic option).

Make check or money order for total amount (USA \$ only) payable to Northwest Chess and mail to:

Eric Holcomb, NW Chess Business Manager
1900 NE 3RD ST STE 106-361
BEND, OR 97701-3889 USA

For general information: Eric Holcomb (541) 647-1021, e-mail: Eric@Holcomb.com

Grand Prix for Organizers/Promoters

Individuals or chess clubs/organizations involved in organizing chess events or promoting chess can receive credit for new or renewing members that they helped sign up. Prizes for this “grand prix” will be awarded each year. To receive credit, please use this form and complete this section. Thank you for supporting Northwest Chess!!

Name of organizer/promoter: _____ Date: _____

Seattle Chess Club Tournaments

Address
17517 15 Ave NE
Seattle WA 98155

Infoline
206-417-5405
www.seattlechess.org
cfkleist@cs.com
Address for Entries
SCC Tnmt Dir
2420 S 137 St
Seattle WA 98168

SCC welcomes back FM Bill Schill!

FM Schill will present a free lecture entitled *Four Kings: Kortchnoi, Karpov, Kasparov, and Kramnik* before the first round of the Seafair, 6:30-7:45 p.m., August 15.

Seattle Seafair

August 15-17 or August 16-17

A one-section, five-round Swiss with a time control of 40/2 and SD/1 (Two-day schedule – Round 1, G/64). The prize fund of \$1620 is based on 58 paid entries, 6 per prize group.

a Harmon Memorial Grand Prix event

First	\$300	gtd.
Second	\$195	gtd.
Third	\$115	gtd.
U2200	\$140	
U2000	\$135	
U1800	\$130	
U1600	\$125	
U1400	\$120	
U1200	\$60	
Unrated	\$45	
Upset (Rds 1-4)	\$10/rd	
Plus Score Pool	\$215	

The Green Open at the SCC

September 13-14

A four-round, two-section, Swiss with a time control of G/90 + 30 seconds per move. The prize fund of \$660 is fully guaranteed and prizes will be increased if more than 40 players. TD: H.G. Pitre. Limited to 48 players.

Open		Reserve (U1800)	
First	\$140	First	\$70
Second	\$100	Second	\$60
Third	\$80	Third	\$50
U2000	\$80	U1600	\$40
		U1400	\$40

Entry Fee: \$32 in advance, \$37 at site. *Discounts:* \$4–member of any NW CCs; \$4–arriving by bus, bike, foot, or carpool; \$4–junior or senior.

Registration: Sat. 9:15-9:45 a.m.

Rounds: Sat. 10-3:30, Sun. 10-3:30.

Half-point byes: commit by registration.

Miscellaneous: USCF & WCF memberships required. Coupons redeemable with local merchants will be available at this event. A Master will lecture on an educational topic for players rated 1800 or below starting about 2:45 p.m. each day.

Entry/Info: H.G. Pitre, 700 Crockett Street #105, Seattle WA 98109; 206-284-9314; hgpitre@gmail.com.

Save gas, save the Earth!

The SCC is served by Metro bus routes 347 & 348. A bus departs every half-hour each evening to Northgate.

Entry Fees: \$41 if rec'd by 8/13, \$50 at site. **GMs, IMs, & WGMs**–FREE. **Unrated**–Free with purchase of 1-yr USCF & 1-yr WCF. **SCC members**–subtract \$11. Members of other dues-required CCs in BC, OR, and WA–subtract \$5. **Add \$1 to any EF for 2-day schedule.**

Registration: Fri. 7-7:45 p.m., Sat. 9-9:45 a.m.

Rounds: Fri. 8, Sat. (10 @ G/64)-12:30-6:45, Sun. 11-5.

Byes: 2 (Sunday rounds, commit at registration).

Miscellaneous: USCF & WCF membership req'd. No smoking. No computers.

Aug 10 **SCC Sunday Tornado**

Format: 4-SS. **TC:** G/64. **EF:** \$17 (+\$5 fee for non-SCC). **Prizes:** 1st 35%, 2nd 27%, Bottom Half 1st 22%, 2nd 16% (\$10 from each EF goes to prize fund). **Reg:** 10:30-11:15 a.m. **Rds:** 11:30-1:50-4:10-6:30. **Misc:** USCF, WCF/OCF memb. req'd, OSA, NS, NC.

Future Events

F indicates a Christopher Memorial NW Grand Prix event

July 19-20 Puget Sound Open

Site: Tacoma CC, 409 Puyallup Ave E, Rm 11, 2nd flr (DTI Soccer Bldg). **Format:** 5-SS **TC:** G/120. **EF:** \$30 in advance, \$40 at site. Juniors: \$20, \$25. Economy (no Prizes): \$12. UNR free w/purch. 1-yr. USCF+WCF. **Prize fund:** 67% of full-pay EFs. **Prizes:** 25%, top 3rd 15%, middle 3rd 14%, bottom 3rd 13% (2 prz grps if fewer than 9 full EFs). **Reg:** 9-9:45 a.m. **Rds:** 10-2:30-7, 10-3 or ASAP. **Byes:** Two ½-pt byes avail. **Misc:** USCF & OCF/WCF memb. req'd. **OSA. NS. NC. Ent/Info:** Gary Dorfner, 8423 E 'B' St, Tacoma WA 98445; 253-535-2536, ggarychess@aol.com.

July 26, Aug 23 PCC Game-in-60

Site: Portland CC, 8205 SW 24th Ave, Portland OR 97219. **Format:** 4-rd Swiss. **TC:** G/60. TD may switch to 5SS and G/45 if more than 25 entries. **EF:** \$20, \$5 discount for PCC members. No advance entries. **Prize Fund:** \$200/b20. **Prizes:** \$60-40-30, U1800 35, U1500 35. **Reg:** 9-9:30 am. **Byes:** One ½-pt. bye avail. if requested at reg. **Misc:** USCF & OCF/WCF membership req'd, **OSA. Info:** portlandchessclub@gmail.com, 503-246-2978, www.pdxchess.org.

Aug 2 Pierce County Class Championships

Site: Tacoma CC, 409 Puyallup Ave E, Room 11, 2nd flr (DTI Soccer Bldg). **Format:** 6 sec. (M/X, A, B, C, D & Under), 5-SS. **TC:** G/30. **EF:** \$15, Jrs \$10. **Prize Fund:** \$160 (b/20, 3/class). **Prizes:** M/X \$40, A \$30, B \$30, C \$30, D & Under \$30. **Reg:** 9-9:45 am. **Rds:** 10-11:30-1:30-3-4:30. **Info/Ent:** Gary Dorfner, 8423 E 'B' St, Tacoma WA 98445, 253-535-2536, ggarychess@aol.com.

Aug 9 WA Blitz Championships

Site: Crossroads Mall, 15600 NE Eighth St, Bellevue WA 98008. **Format:** 2 sec. (Open, K-12), 7x2-SS. **TC:** G/5. **EF:** Open \$25 if rec'd by 7/12, \$30 thereafter. K-12 \$15. **Prize Fund:** 60% of EFs. **Prizes:** Open based on entries (includes u21). K-12 trophies & medals. **Reg:** noon-12:25 pm. **Rds:** 1st rd – 12:30. **Misc:** Open WCF memb. req'd. **Rules:** clock move; illegal move – add 2 min to opp. **Info/Ent:** 425-283-0549, chess4life.com (Open by 7/12); Chess4Life Center, 13555 Bel-Red Rd, Ste 200, Bellevue WA 98005.

Aug 23 Summer Lightning

Site: Spokane Valley Library, 12004 E. Main, Spokane, WA 99206. **Format:** Single or Double RR. **TC:** G/10. **EF:** \$11 (can be paid at club or at site). UNR free w/purch. 1-yr. USCF+WCF. **Prize fund:** 100% payout. **Prizes:** \$100 (b/10), other prizes b/entries. **Reg:** 10-10:30 a.m. **Misc:** USCF memb. req'd. Coffee & snacks provided. **Info:** David Griffin, 509-928-3260, dbgrffin@hotmail.com.

Aug 23-24 Tacoma Summer Open

Site: Tacoma CC, 409 Puyallup Ave E, Rm 11, 2nd flr (DTI Soccer Bldg). **Format:** 5-SS **TC:** G/120. **EF:** \$30 in advance, \$40 at site. Juniors: \$20, \$25. Economy (no Prizes): \$12. UNR free w/purch. 1-yr. USCF+WCF. **Prize fund:** 67% of full-pay EFs. **Prizes:** 25%, top 3rd 15%, middle 3rd 14%, bottom 3rd 13% (2 prz grps if fewer than 9 full EFs). **Reg:** 9-9:45 a.m. **Rds:** 10-2:30-7, 10-3 or ASAP. **Byes:** Two ½-pt byes avail. **Misc:** USCF & OCF/WCF memb. req'd. **OSA. NS. NC. Ent/Info:** Gary Dorfner, 8423 E 'B' St, Tacoma WA 98445; 253-535-2536, ggarychess@aol.com.

Scholastic Summer Chess Camps



Chess4Life for K-8 various sites WA

Elliott Neff 425-283-0549 kids@chess4life.com www.chess4life.com		
July 21-25	Sammamish WA
21-25	Bellevue WA
July 28-Aug 1	Bellevue WA
Aug 4-8	Tacoma WA
4-8	Bellevue WA
11-15	Bellevue WA
18-22	Sammamish WA
18-22	Bellevue WA
21-28	Chess Camp at Sea	Alaska Cruise
25-29	Bellevue WA

Chess Odyssey for ages 6-19 various sites OR

503-504-5756 pete@chessodyssey.com www.chessodyssey.com		
July 21-25	Beaverton OR
July 28-Aug 1	Half-Day Novice	Lake Oswego OR
Aug 4-8	Portland OR
18-22	Beaverton OR

Chess Vision for ages 5-18 various sites OR

Tony Hann 503-880-0581 www.chessvision.net		
July 21-25	Portland OR
Aug 4-8	Portland OR
11-15	North Wilsonville OR

Evergreen School Shoreline WA

D. Larway summerprogram@evergreenschool.org 206-957-1533		
July 21-25	Intermediate (ages 7-13)	
July 28-Aug 1	Advanced (ages 8-15)	
Aug 11-15	Siamese (ages 6-15)	
Aug 18-22	Super-Advanced (ages 8-15)	

WGM Elena Donaldson & IM Georgi Orlov various sites WA

206-363-6511 chess64@comcast.net www.chessplayer.com/camps2007.htm		
July 21-25	grades K-6	Bellevue WA
21-25	grades K-6	Seattle WA
July 28-Aug 1	grades K-8	Seattle WA
Aug 4-8	grades K-6	Seattle WA
4-8	grades K-6	Everett WA
11-15	grades 8-12	Seattle WA
18-22	grades K-6	Woodinville WA
25-29	grades K-8	Bellevue WA

David Hendricks Sammamish WA

425-868-3881 davidhendricks@comcast.net		
July 28-Aug 1	grades 1-3	

Open Events

July 2008

18,25	Firecracker Swiss (Rds 2-3)	253-535-2536 ggrychess@aol.com www.tacomachessclub.netfirms.com	Tacoma WA
19	Ecuador Fundraiser	www.chess4life.com	Renton WA
19-20	Puget Sound Open	253-535-2536 ggrychess@aol.com www.tacomachessclub.netfirms.com	Tacoma WA
20	COCC Summer Sizzler G/90	seantobin_2000@yahoo.com	Bend OR
22	COCC G120 Swiss (Rd 3)	seantobin_2000@yahoo.com	Bend OR
23	Campbell Center Open	541-682-6392 541-342-5406 mel.c.mann@ci.eugene.or.us www.eugene-or.gov/recreation	Eugene OR
26	♯ PCC Game-in-60	503-246-2978 portlandchessclub@gmail.com www.pdxchess.org	Portland OR
26	WA vs. OR Match	H. Greninger 360-533-1900 fax 360-533-1909 harleyg@prgraysharbor.com	Hoquiam WA
27	SCC Novice	SCC Infoline 206-417-5405 cfkleist@cs.com www.seattlechess.org	Seattle WA
27	COCC G/25	seantobin_2000@yahoo.com	Bend OR

August 2008

1,8,15,22	TCC Summer Championship	253-535-2536 ggrychess@aol.com www.tacomachessclub.netfirms.com	Tacoma WA
2	PCC Saturday Quads	503-246-2978 portlandchessclub@gmail.com www.pdxchess.org	Portland OR
2-10	U.S. Open	main.uschess.org/tournaments/2008/usopen	Dallas TX
2	Pierce Cty Class Championships	253-535-2536 ggrychess@aol.com www.tacomachessclub.netfirms.com	Tacoma WA
2-4	Rod Planas Memorial	Grant Rice 250-979-0009 ridebike@okanagan.net	Kelowna BC
5	PCC Tuesday Quads begin	503-246-2978 portlandchessclub@gmail.com www.pdxchess.org	Portland OR
9	WA Blitz Championships	www.chess4life.com	Bellevue WA
10	SCC Sunday Tornado NEW DATE	SCC Infoline 206-417-5405 cfkleist@cs.com www.seattlechess.org	Seattle WA
13	Simultaneous Exhibition	mark.ryan@translation.net www.calandersonpark.org	Seattle WA
15-17	Seafair Open	SCC Infoline 206-417-5405 cfkleist@cs.com www.seattlechess.org	Seattle WA
23	♯ PCC Game-in-60	503-246-2978 portlandchessclub@gmail.com www.pdxchess.org	Portland OR
23	Summer Lightning	David Griffin 509-928-3260 dbgriffin@hotmail.com	Spokane WA
23-24	Tacoma Summer Open	253-535-2536 ggrychess@aol.com www.tacomachessclub.netfirms.com	Tacoma WA
30	Java Fusion Open	253-535-2536 ggrychess@aol.com www.tacomachessclub.netfirms.com	Tacoma WA
30-Sep 1	Oregon Open	www.pdxchess.org	Gresham OR

September 2008

5,12,19	SCC Championship (Rds 1-3)	SCC Infoline 206-417-5405 cfkleist@cs.com www.seattlechess.org	Seattle WA
5,12,19	TCC Fall Quads	253-535-2536 ggrychess@aol.com www.tacomachessclub.netfirms.com	Tacoma WA
6	PCC Saturday Quads	503-246-2978 portlandchessclub@gmail.com www.pdxchess.org	Portland OR
6-7	Tacoma Fall Open	253-535-2536 ggrychess@aol.com www.tacomachessclub.netfirms.com	Tacoma WA
9	PCC Saturday Quads	503-246-2978 portlandchessclub@gmail.com www.pdxchess.org	Portland OR
13	Blindfold Exhibition	mark.ryan@translation.net www.calandersonpark.org	Seattle WA
21	SCC Sunday Tornado	SCC Infoline 206-417-5405 cfkleist@cs.com www.seattlechess.org	Seattle WA
26-28	Seattle Fall Open	SCC Infoline 206-417-5405 cfkleist@cs.com www.seattlechess.org	Seattle WA
27	♯ PCC Game-in-60	503-246-2978 portlandchessclub@gmail.com www.pdxchess.org	Portland OR
27-28	Eastern Washington Open	David Griffin 509-928-3260 dbgriffin@hotmail.com	Spokane WA
30	PCC Championship (Rd 1)	503-246-2978 portlandchessclub@gmail.com www.pdxchess.org	Portland OR

NOTE: A 'P' in front of the date indicates a Harmon Memorial Northwest GP event. A ♯ in front of the tournament name indicates an OSCF qualifying tournament. Boldface type indicates a tournament announcement (in our Future Events Section) or display ad in this issue.

Scholastic Events

For Summer Camp information see page 23

July 2008

19	Ecuador Fundraiser	www.chess4life.com	Renton WA
21	Elena's Blitz III	www.chessplayer.com	Kirkland WA

August 2008

13	TCC Wed. Kids Night	Gary 253-535-2536 ggrychess@aol.com www.tacomachessclub.netfirms.com	Tacoma WA
17	Elena's Blitz IV	www.chessplayer.com	Kirkland WA

USCF NATIONAL Scholastics

For information on any national event, visit www.uschess.org

July 25-28

US Junior Open

Lindsborg KS

Nov. 7-9

National Youth Action

Brownsville TX

Dec. 12-14

National K-12/Collegiate Championship

Kissimmee FL

A ♯ in front of the tournament name indicates an OSCF qualifying tournament. Boldface type indicates a tournament announcement (in our Future Events Section) or display ad in this issue.