

www.nwchess.com

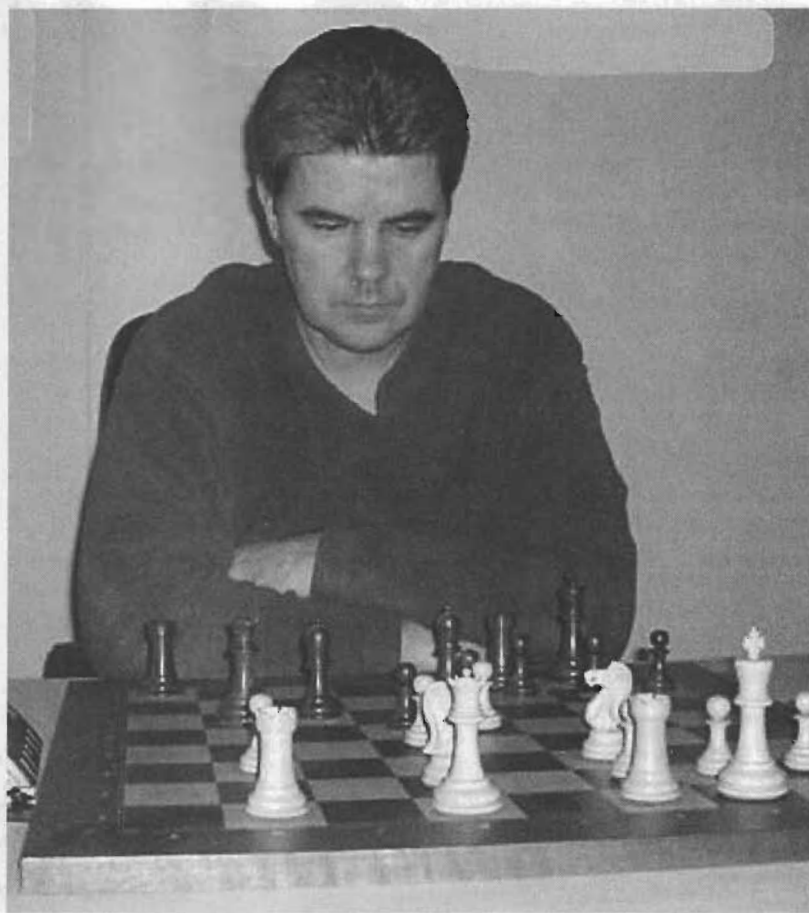


# NORTHWEST CHESS

Washington Chess Federation  
Oregon Chess Federation

February-March 2008  
208 \$3.95

926-0901A  
MIKE MACGREGOR



*Winner of the Challengers' Cup, NM Harley Greninger*

## Games from the Challengers' Cup

Minev on Castling, Uno Norteamericano en España, y más

# Northwest Chess

Feb.-March 2008, Volume 62,2 Issue 716

ISSN Publication 0146-6941

Published monthly by the Northwest Chess Board. Office of record: 2420 S 137 St. Seattle WA 98168.

**POSTMASTER:** Send Address Changes to: Northwest Chess, PO Box 84746, Seattle WA 98124-6046.

Periodicals Postage Paid at Seattle, WA

USPS periodicals postage permit number (0422-390)

## NWC Staff

Editor: Fred Kleist

Games Editor: FM Chuck Schulien

Technical Assistance: Russell Miller

Printer: Snohomish Publishing

Business Manager: Eric Holcomb

## Board Representatives

Oregon: Dave Yoshinaga

Washington: Geoff Gale &

Ricky Selzler

Entire contents copyright 2008 by Northwest Chess. All rights reserved. Published opinions are those of the contributors and do not necessarily reflect the views of the editor or the Northwest Chess Board.

## Advertising Rates

Display ads run \$150 for a full page, \$100 for 1/2 page ads; \$85 for a half-page, \$60 for 1/3 page ads; \$30 for a quarter page, \$20 for an eighth of a page, and \$10 for a business card-size ad. Add \$10 if the ad is not copy ready and the staff must do layout work. A 15% discount is available for two or more consecutive ads of the same size.

## Event Announcement Rates

Each appearance in *Event Announcements* costs \$20. Payment is required before publication. Enclose \$2 additional if an invoice is required--this is a mandatory service charge.

## Advertising & Copy Deadline

Please get your ads and submissions in by the 10th of the month for the items to appear in the next issue (e.g., no later than Feb. 10 for the Mar. issue). The editor cannot guarantee that late submissions will appear in the desired issue.

**Submit all ads and payments to:**

*Business Manager, Northwest Chess*

**PMB 342, 12932 SE Kent-Kangley Rd**

**Kent WA 98030-7940**

**Eric@Holcomb.com**

## Submissions

Hey folks! The editor depends on YOU to make this magazine vibrant and exciting. I need your games, photographs, thoughts, and ideas. This magazine has a great tradition and I hope people will contribute enthusiastically. You can send me your materials via U.S. mail or via e-mail:

**Northwest Chess**

**Fred Kleist, Editor**

2420 S. 137th Street

Seattle WA 98168

NWCeditor@cs.com

206-242-7076

If you'd like your games annotated by a senior master, send them to our Games Editor:

**FM Chuck Schulien**

cschess@hotmail.com

## Subscription Information

Northwest Chess is a benefit of membership in either the Oregon or Washington Chess Federations. Adult dues are \$25; Junior dues (under 20) are \$17 (or \$10 for six months). Please send dues, along with pertinent information to:

*Business Manager*

**Northwest Chess**

Eric Holcomb

PMB 342, 12932 SE Kent-Kangley Rd

Kent WA 98030-7940

Eric@Holcomb.com

http://www.nwchess.com

## **Northwest Grand Prix Administrator**

Murlin Varner

13329 208 Ave NE

Woodinville WA 98072

MEVjr54@yahoo.com

425-882-0102

## **Oregon Chess Federation**

*President*

**Dave Yoshinaga**

971-404-5251

dave@kdtonline.com

*Vice President*

**Mike Terrill**

503-580-9187

pflotus@yahoo.com

*Secretary*

**Carl Haessler**

ssmith6154@aol.com

*Treasurer*

**Mike Morris**

mikejmorris@earthlink.net

*Tournament Coordinator*

**Peter Prochaska**

503-504-5756

pete@chessodyssey.com

*Scholastic Coordinator*

**Taylor Bailey**

503-282-6796

cosmos24@gmail.com

*Director-at-Large*

**Marcus Robinson**

503-245-1204

mprscorp@comcast.net

## **Washington Chess Federation**

*President*

**Geoff Gale**

206-860-9963

geoffreygale@gmail.com

*Vice President*

**Duane Polich**

*Secretary*

**Gary Dorfner**

253-535-2536

ggarychess@aol.com

*Treasurer*

**Robert J. Allen**

253-761-1288

allenrobertj@msn.com

*Tournament Coordinator*

**Dan Mathews**

425-778-7482

dthmathews@hotmail.com

*Scholastic Coordinator*

**David Hendricks**

425-868-3881

davidhendricks@comcast.net

*NW Chess Board Member*

**Ricky Selzler**

rts89@comcast.net

## *Greetings from the Editor*

Next month, I'll welcome NM Nat Koons as an assistant editor! He'll be providing some of the content, but that does not absolve you, the readers, of your obligation to provide material for this magazine!



*Editor's Desk*

Did you play an interesting game? Send it in to the magazine, annotated or not! Did you go to a tourney? Write a report! Did you like your newest chess book/software, or just hate it? Let the rest of us know about it by writing a review!

Of course, any other articles or pictures that you contribute will be more than welcome, though pictures generally have to fit in with some article.

Best Wishes,

*Frederick K. Kleist*

Thanks to C. Kleist for proofreading.

## *Northwest Chess Knights*

*Northwest Chess Knight donors will be listed in the magazine for a period of one year following receipt of donation. Please consider making a donation today to help Northwest Chess!*

King: \$1000+  
Queen: \$500-\$999  
Rook: \$250-\$499  
Bishop: \$100-\$249  
Knight: \$50-\$99  
Pawn: \$15-\$49

## Current Patrons

*King:* Cynthia McBride, Kent McNall

*Queen:*

*Rook:* Nat Koons, Michael Wang

*Bishop:* Ralph Hall, Russell Miller, Michael Omori family, Boyd Schorzman

*Knight:* Robert Brewster, Steve Buck, Darby Monahan

*Pawn:* Mark James, Gene Milener

*Contributions can be sent to the Northwest Chess Business Manager, and are greatly appreciated!*

## Anagram Contest #2

Northwest Class Players

### Answers

Barren Drapes—**Bernard Spera**

Cereal Thrill 'im?—**Michael Terrill**

Colder Spinach—**Chris Copeland**

Darn Chin Barre!—**Richard Banner**

Glowing Animal—**William Gagnon**

I Beat Royally!—**Taylor Bailey**

Loanword Record—**Rowland Cordero**

Meager Proton—**Peter O'Gorman**

Railroad Madmen—**Ramone LaMadrid**

Ripening Thane—**Hanniegn Pitre**

There were only four entries in the second Anagram Contest. Three got all ten correct, one had seven. In contrast to last time, the Tornado winner was drawn first. The winners were:

Quad Winners

David Bragg

Michael Lee

Kerry Xing

Tornado Winner

Megan Lee

Thank you to all who participated! The certificates will be mailed on March 15 and will be good till February 28, 2009.

## *News in Brief*

*Seattle, Washington*

The Washington State Championship was held in mid-February. GM Gregory Serper was first with eight points from nine. NM Ignacio Perez was second at 6.5, while IM Georgi Orlov and FM Slava Mikhailuk shared third-fourth at six points apiece.

NM Curt Collyer topped the Premier with seven points. He was closely followed by Kerry Xing (6.5), Ricky Selzler (6.0), and FM David Bragg (5.5).

Because of an extraordinary amount of interest, a third section, the WA Invitational was added this year. Geoff Gale won the event, scoring 7.5. FM Paul Bartron and Nhon Do tied for second-third at 6.5.

A full report and games will appear in April.

# Northwest Chess

February-March 2008

## Anagram Contest Winners

page 3

## Games from the Washington Challengers' Cup

*Drayton Harrison has again annotated several games*

page 4

## Tournament Ads

pages 7, 9, 10, 22, 23

## Spokane Report

page 15

## Gresham Open: Victory to the Old Guys

page 15

## Norteamericano en España

*David Rupel suggests taking a European chess vacation*

page 16

## NWC News: Business Manager Moves

page 17

## NWC News: Yellow Pages Ad

page 18

## Surprising Castling

*IM Nikolay Minev presents tactical castling*

page 19

## Northwest Chess Calendar of Upcoming Events

back cover

**On the Cover:** NM Harley Greninger, winner of the Washington Challengers' Cup. *Photo by Judy Greninger.*

# Harley Greninger wins Four-Player Playoff at Challengers' Cup

by Gary Dorfner

The Washington Challengers' Cup was held at the Tacoma Chess Club on December 29-30. There were 27 players in all, sixteen in the Cup section & eleven in the Reserve. The winners were: Open 1st-2nd NM Harley Greninger, NM Michael MacGregor, FM David Bragg, and Nhon Do \$50 each, U2000 Allen Smith & Peter O'Gorman \$40.00 each. Reserve 1st David Meliti \$100, 2nd Stephen Buck \$80, U1600/U1400 Ian McPherson, Amith Vanmane & Ramsamy Subramani \$46 each.

There was a playoff to determine who would be seeded into the State Championship from among the four tied players. The players drew cards. The two high cards and the two low cards were paired with each other in the G/10 semi-finals. MacGregor and Greninger won and, after cutting the cards to see who would be White, they went at it in another 10-minute game. Greninger won and he will be seeded into the state championship. Chief TD was Gary Dorfner & Ass't TD was Drayton Harrison.

## Washington Challengers' Cup Tacoma 12/29-30 TD: Gary Dorfner

Challengers										
1 Harley Greninger	2213	2220	D7	W12	D5	W2				3.0
2 Michael MacGregor	2205	2215	W16	W4	W3	L1				3.0
3 David Bragg	2200	2208	W9	W5	L2	W8				3.0
4 Nhon Do	2082	2103	W14	L2	W12	W7				3.0
5 Viktors Pupols	2202	2201	W11	L3	D1	W9				2.5
6 Huso Hadzic	2189	2169	L12	W13	L9	W11				2.0
7 Paul Bartron	2081	2084	D1	W15	D11	L4				2.0
8 Benjamin Calpo	2034	2026	D13	W10	H	L3				2.0
9 Allen Smith	1979	1985	L3	B	W6	L5				2.0
10 Peter O'Gorman	1810	1816	D15	L8	B	D12				2.0
11 Howard Chen	1993	1997	L5	W16	D7	L6				1.5
12 Peter June	1860	1871	W6	L1	L4	D10				1.5
13 Krishnan Warriar	1694	1709	D8	L6	D14	H				1.5
14 Mark Ryan	1869	1859	L4	H	D13	U				1.0
15 Ricky Selzler	2148	2132	D10	L7	U	U				0.5
16 Geoffrey Gale	2056	2041	L2	L11	U	U				0.0

Reserve										
1 David Meliti	CO	1757	1788	W9	W4	W2	W6	W7		5.0
2 Stephen Buck		1783	1773	W8	W7	L1	W4	D6		3.5
3 Ian Mcpherson		1318	1381	D6	W8	L4	W10	H		3.0
4 Ramsamy Subramani		1305	1354	W5	L1	W3	L2	W9		3.0
5 Amith Vanmane		1086	1157	L4	W9	W11	L7	W10		3.0
6 Jingzhou Lai	BC	0	1584	D3	W10	D7	L1	D2		2.5
7 Jeremy Jusak		1556	1547	W11	L2	D6	W5	L1		2.5
8 Justin Yu		1388	1350	L2	L3	L10	B	W11		2.0
9 Calvin Oberly		1069	1044	L1	L5	B	W11	L4		2.0
10 August Piper		1500	1500	H	L6	W8	L3	L5		1.5
11 Alex Lopez		353	350	L7	B	L5	L9	L8		1.0

## QGD Semi-Slav

FM Paul Bartron(2081)  
NM Harley Greninger (2213)

Tacoma, Challengers Cup (1) 2007


1.e4 c6 2.c4 e6 3.d4 d5 4.♘c3 dxe4 5.♗xe4 ♘b4+ 6.♗c3 ♗f6 7.♙b3 c5 8.dxc5 ♗c6 9.♗f3 ♗e4 10.♙c2 ♗xc3 11.bxc3 ♘xc5 12.♗d3 h6 13.O-O O-O 14.♗f4 ♙f6 15.♗g3 b6 16.♗e4 ♗b7 17.♗ad1 ♙e7 18.♙a4 ♗ac8 19.♗fe1 ♗a5 20.♗xb7 ♙xb7 21.♗d7 ♙c6 22.♙xc6 ♗xc6 23.♗ed1 ♗fd8 24.♗e5 ♗xd7 25.♗xd7 ♗d8 26.♗f1 f6 27.♗xd8+ ♗xd8 28.♗d3 ♗a3 29.♗b4 ♗b2 30.c5 bxc5 31.♗d3 ♗a3 32.♗d6 ♗b7 33.♗b8 a6 34.c4 e5 35.f3 ♗a5 36.♗a7 ♗xc4 37.♗xc5 Draw

## Sicilian Four Knights

NM Michael MacGregor (2203)  
Geoffrey Gale (2006)




Tacoma, Challengers Cup (1) 2007

1.e4 c5 2.♗f3 ♗c6 3.d4 cxd4 4.♗xd4 ♗f6 5.♗c3 e6 6.♗db5 ♗b4 7.♗d6+ ♗e7 8.♗xc8+ ♗xc8 9.♗d3 d5 10.exd5 ♙xd5 11.O-O ♗xc3 12.bxc3 ♗hd8 13.c4 ♙a5 14.♗d2 ♙c7 15.♗e1

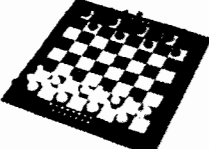
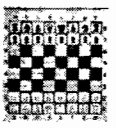



**THE CHESS HOUSE**  
Serving the chess community since 1972

**your chess sets  
and equipment store**

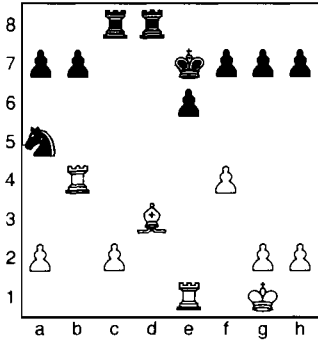




chess sets, combos, clocks  
electronic chess, software  
books, dvd's, teaching supplies  
awards, chess for education  
accessories, boards, pieces

**www.ChessHouse.com**  
**1-800-348-4749**

♖a5 16. ♗b4+ ♜e8 17. ♞d2 ♜xc4  
 18. ♞g5 ♜d5 19. ♞ab1 ♜xb4 20. ♞xb4  
 ♞a5 21. ♞xa5 ♜xa5 22. f4 ♜e7



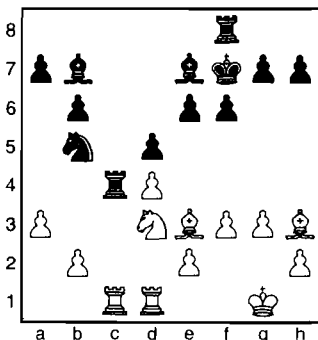
23. f5 h6 24. ♞g4 ♜f6 25. fxe6 g5 26. exf7  
 ♜xf7 27. h4 ♞c5 28. ♞ge4 ♞d7 29. ♞f1+  
 ♜g8 30. ♞e6 ♞c6 31. ♞ff6 ♞xe6 32.  
 ♞xe6 gxh4 33. ♞g6+ ♜f7 34. ♞xh6 ♞d4  
 35. ♜h2 ♜g7 36. ♞h7+ ♜f6 37. ♜h3  
 ♜g5 38. ♞g7+ ♜f6 39. ♞g6+ ♜f7 40.  
 ♞g4 ♞xg4 41. ♜xg4 a6 42. ♜xh4 b5  
 43. ♜g5 ♜c6 44. ♜f5 ♜b4 45. ♗e4 ♜g7  
 46. a3 ♜a2 47. ♜e5 ♜c3 48. ♗d3 ♜b1  
 49. c4 ♜xa3 50. c5 ♜f7 51. ♜d6 1-0

*Queen's Pawn Game*

**FM David Bragg (2200)**  
**Allen Smith (1978)**

*Tacoma, Challengers Cup (1) 2007*

1. d4 d5 2. g3 ♜f6 3. ♗g2 ♜bd7 4. ♜f3  
 e6 5. O-O ♗e7 6. ♜bd2 O-O 7. ♞e1 b6  
 8. ♜e5 ♗b7 9. ♜df3 c5 10. c3 ♜e4  
 11. ♜xd7 ♞xd7 12. ♜e5 ♞c7 13. f3 ♜d6  
 14. a3 cxd4 15. cxd4 ♞ac8 16. ♗f4 ♞c2  
 17. ♞b1 ♜b5 18. ♗e3 f6 19. ♜d3 ♞c4  
 20. ♗h3 ♜f7 21. ♞c1 ♞xd1 22. ♞exd1



22... ♜xd4 23. ♞xc4 dxc4 24. ♜f4 ♜f5  
 25. ♗xf5 exf5 26. ♞d7 ♞b8 27. ♞c7 g5  
 28. ♜g2 ♜e6 29. ♜f2 ♜d6 30. ♞xc4 ♗c6  
 31. ♜f4 ♗b5 32. ♞d4+ ♜c6 33. ♜e6  
 ♗a6 34. ♞d2 ♗c8 35. ♜d4+ ♜b7 36.  
 ♜b5 ♗e6 37. ♗d4 a6 38. ♜c3 ♞d8 39. e3  
 ♗c5 40. ♜e2 ♗c4 41. ♞c2 ♗xe2 42.  
 ♜xe2 ♗xd4 43. ♞d2 ♜c6 44. ♞xd4

♞xd4 45. exd4 ♜d5 46. ♜d3 b5 47. ♜c3  
 a5 48. ♜d3 b4 49. a4 f4 50. g4 h6 51. h3  
 ♜d6 52. ♜c4 ♜c6 53. d5+ ♜d6 54. ♜d4  
 ♜c7 55. ♜c5 b3 56. d6+ ♜d7 57. ♜d5  
 1-0

*Sicilian Wing Gambit*

**Howard Chen (1993)**  
**LM Viktors Pupols (2202)**

*Tacoma, Challengers Cup (1) 2007*

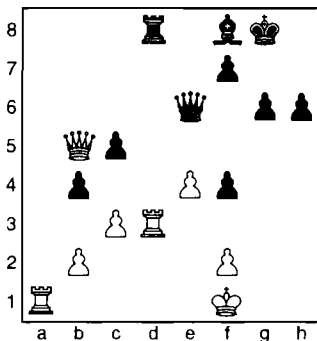
1. e4 c5 2. b4 cxb4 3. a3 d5 4. exd5 ♞xd5  
 5. ♜f3 ♗g4 6. axb4 ♜c6 7. ♜c3 ♞e6+  
 8. ♞e2 ♜xb4 9. ♞a4 ♗xf3 10. gxf3  
 ♞xe2+ 11. ♗xe2 e6 12. ♜b5 ♜d7 13.  
 ♜xa7 ♗c5 14. ♗b5+ ♜c7 15. ♗b2 f6  
 16. d4 ♞xa7 17. ♞xa7 ♗xa7 0-1

*Sicilian Rossolimo*

**Peter June (1859)**  
**Huso Hadzic (2190)**

*Tacoma, Challengers Cup (1) 2007*

1. e4 c5 2. ♜f3 ♜c6 3. ♗b5 g6 4. ♗xc6  
 dxc6 5. O-O ♗g7 6. h3 ♜f6 7. d3 O-O  
 8. ♜bd2 b6 9. ♞e2 h6 10. ♜c4 ♞c7  
 11. ♗e3 ♗e6 12. ♜cd2 ♞ad8 13. d4 cxd4  
 14. ♗xd4 c5 15. ♗c3 ♗c8 16. ♞fe1 ♞fe8  
 17. ♞c4 e5 18. a4 ♜h5 19. a5 ♜f4 20.  
 axb6 axb6 21. ♞b5 ♗d7 22. ♞b3 ♗xh3  
 23. gxh3 ♞d7 24. ♞e3 ♜xh3+ 25. ♜f1  
 ♜f4 26. ♜g1 b5 27. ♗a5 ♞a8 28. ♜e2  
 ♞xa5 29. ♞xa5 ♞xd2 30. ♞a1 ♞d7  
 31. ♞a3 b4 32. ♞a4 ♞e6 33. c3 ♗f8 34.  
 ♞b5 ♞d8 35. ♜xf4 exf4 36. ♞d3



36... ♞xe4 37. ♞xd8 ♞h1+ 38. ♜e2 ♞xa1  
 39. ♞xc5 ♞xb2+ 40. ♜f1 ♞c1+ 41. ♜g2  
 f3+ 42. ♜h2 ♞f4+ 43. ♜h3 ♜h7 44. ♞xf8  
 bxc3 45. ♞xc3 ♞f5+ 46. ♜g3 ♞g5+  
 47. ♜xf3 ♞d5+ 48. ♜e2 ♞b5+ 49. ♜e1  
 ♞b1+ 50. ♜d2 ♞a2+ 51. ♜c1 g5 52.  
 ♞h8+ ♜g6 53. ♞g8+ ♜f5 54. ♞f3+ ♜e6  
 55. ♞e4+ ♜f6 56. ♞d4+ ♜f5 57. ♞d3+  
 ♜f6 58. ♞c3+ ♜f5 59. ♞c2+ ♞xc2+  
 60. ♜xc2 h5 61. ♜d2 h4 62. ♜e2 ♜f4 63.  
 f3 f5 64. ♜f2 g4 65. ♞f8 ♜g5 66. ♜g2

♜f4 67. fxxg4 ♜xg4 68. ♞g8+ ♜f4 69.  
 ♜f2 h3 70. ♞g7 ♜e4 71. ♞h7 1-0

*Sicilian Accelerated Dragon*

**Ricky Selzler (2148)**  
**Peter O'Gorman (1810)**

*Tacoma, Challengers Cup (1) 2007*

1. e4 c5 2. ♜f3 ♜c6 3. d4 cxd4 4. ♜xd4  
 g6 5. ♜c3 ♗g7 6. ♗e3 ♜f6 7. ♗c4 O-O  
 8. ♗b3 a5 9. a4 ♜g4 10. ♞xg4 ♜xd4  
 11. ♞h4 ♗f6 12. ♞g3 ♜xb3 13. cxb3 d6  
 14. O-O ♗e6 15. ♞a3 ♞c8 16. ♞c1 ♞c6  
 17. ♗h6 ♞e8 18. ♞d3 ♞c7 19. ♗d2 ♞c8  
 20. ♞e1 ♞b6 21. ♞b5 ♞d4 22. ♞e2 ♗d7  
 23. ♞e3 ♞xe3 24. ♞xe3 ♗g5 25. ♞d3  
 ♗xd2 26. ♞xd2 ♗e6 27. f3 ♞b6 28. ♜b5  
 ♞c1+ 29. ♜f2 ♗d7 30. ♜c3 ♗e6 31.  
 ♜b5 ♞bc6 32. ♜d4 ♞b6 33. ♜b5 ♗d7  
 34. ♜c3 ♗e6 Draw

*Pirc 150 Attack*

**Mark Ryan (1868)**  
**Nhon Do (2082)**

*Tacoma, Challengers Cup (1) 2007*

Annotations by Drayton Harrison

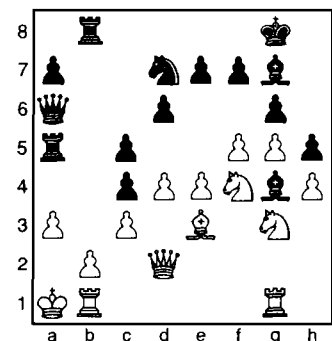
1. e4 d6 2. d4 ♜f6 3. ♜c3 g6 4. ♗e3  
 ♗g7 5. ♞d2 c6 6. f3 ♜bd7 7. g4 ♞a5  
 8. O-O-O

White castles into the attack, while  
 Black is going to delay castling until af-  
 ter the kingside becomes blocked up.  
 8. ♜ge2!? develops and keeps White's op-  
 tions open.

8...b5 9. ♜b1 ♞b8

9...♜b6 10. ♗d3 seems to be the main line.

10. h4 h5! 11. g5 ♜h7 12. f4 ♜b6 13. a3  
 ♗g4 14. ♞e1 ♜c4 15. ♗xc4 bxc4 16.  
 ♜a1 O-O 17. ♜ce2 ♞a6 18. ♜g3 ♞b5  
 19. ♜1e2 ♞f8 20. ♞b1 c5 21. ♞hg1  
 ♜f8 22. f5 ♜d7 23. ♜f4 ♞a5 24. c3



Do suggested 24. ♖a2 as a forced improvement, but Black can still win after 24...cxd4 25. ♗xd4 c3 26. ♖xc3 ♖c8! (26... ♖c5 27. ♗xg7 ♖xc3 28. ♗xc3 ♗xf5! is also better for Black) 27. ♖b3 [27. ♗xg7 is no longer playable due to 27... ♖xc3 28. ♗xc3 ♖c4+ 29. ♖a1 ♖xa3+!! 30. bxa3 ♖xc3+ 31. ♖a2 (31. ♖b2 ♖e3) 31... ♖xc2+ 32. ♖b2 ♖c4+ 33. ♖b1 ♖d4 34. ♖f1 ♖e3 35. ♗fe2 ♖xa3 and Black has too much material. 27. ♖xc8+ ♖xc8 28. ♗xg7 ♖c4+ 29. ♖a1 ♖xg7 is no better.) 27... ♗xd4 28. fxg6 ♖h8.

24... ♖xa3+!! 25. bxa3 ♖xa3+ 26. ♖a2 ♖xc3+ 27. ♖b2 ♖xb2 28. ♖xb2 ♖xe3 0-1

A model attacking game for Black in the Pirc Defense.

### Sicilian Paulsen

**Benjamin Calpo (2067)**

**Vishnu Warriar (1693)**

*Tacoma, Challengers Cup (1) 2007*

1. e4 c5 2. ♗f3 e6 3. d4 cxd4 4. ♗xd4 ♗f6 5. ♗d3 ♗c6 6. c3 ♖c7 7. O-O ♗e7 8. ♖h1 d5 9. ♗d2 e5 10. ♗b5 ♖b8 11. exd5 ♗xd5 12. ♗c4 ♗f6 13. b4 a6 14. ♗a3 b5 15. ♗b3 O-O 16. ♖e2 ♗f5 17. f3 ♖d8 18. ♗e4 a5 19. bxa5 ♗xa5 20. ♗c2 ♗e6 21. ♖d1 ♖xd1+ 22. ♖xd1 ♗d5 23. ♖d3 b4 24. ♗g5 g6 25. ♗xe6 fxe6 26. c4 ♗f4 27. ♗xf4 exf4 28. ♗b5 ♖e5 29. ♖b1 ♖d8 30. ♖e4 ♖xe4 31. fxe4 ♖d2 32. ♗d1 ♖xa2 33. h4 ♖g7 34. e5 ♗xc4 35. ♗b3 ♖b2 36. ♖xb2 ♗xb2 37. ♗d4 ♗d3 38. ♗xe6+ ♖h6 39. ♗c2 ♗xe5 40. ♗xf4 ♗xh4 41. ♖h2 ♗e7 42. ♖h3 ♖g5 43. g3 ♗c4 44. ♗d5 ♗c5 45. ♖g2 ♗d2 46. ♗d3 ♖h6 47. ♗f6 remaining moves unclear Draw

### Grünfeld Defense

**Nhon Do (2082)**

**NM Michael MacGregor (2203)**

*Tacoma, Challengers Cup (2) 2007*

Annotations by Drayton Harrison

1. ♗f3 ♗f6 2. d4 g6 3. g3 ♗g7 4. ♗g2 O-O 5. O-O d5 6. c4 c6 7. cxd5 cxd5 8. ♗c3 ♗c6 9. ♗f4 ♗e4 10. e3 h6 11. h4 ♗g4 12. ♗e2 e6 13. ♗h2 ♗xe2 14. ♖xe2 g5 15. hxg5 hxg5 16. f3 gxf4 17. fxe4 fxe3 18. exd5 ♗xd4 19. ♖h5 e2 20. ♖f4 ♖a5 21. ♗g4 e1=♖+ 22. ♖xe1 ♖xe1+ 23. ♖h2 ♗f5 24. ♖f3 ♖d2 25. ♖f2 ♖c1 26. ♗e4 ♖ac8 27. dxe6 fxe6 28. ♖g6 ♖c6

29. ♗xc6 ♖xc6 30. ♖d2 e5 31. ♗xe5 ♖xg6 32. ♗xg6 ♖f7 33. ♖d8+ ♖h7 34. ♗f4 ♗xb2 35. ♗e6 ♖g6 36. ♗f4+ ♖f6 37. ♖e8 ♗e7 38. ♖h3 ♗e5 39. ♗h5+ ♖e6 40. g4 ♖f2 41. g5 ♖f7 42. ♖d8 ♖g6 43. ♖e8 0-1

43. ♖e8 ♖xh5! 44. ♖xe7 ♖h2 mate

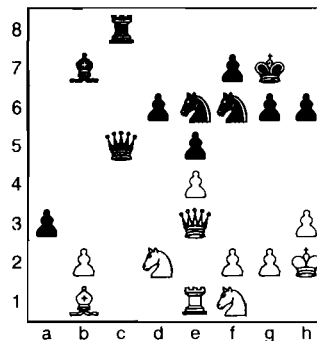
### Ruy Lopez Anderssen

**LM Viktors Pupols (2202)**

**FM David Bragg (2200)**

*Tacoma, Challengers Cup (2) 2007*

1. e4 e5 2. ♗f3 ♗c6 3. ♗b5 a6 4. ♗a4 ♗f6 5. d3 ♗c5 6. c3 b5 7. ♗c2 ♗a7 8. ♖e2 h6 9. ♗e3 ♗xe3 10. ♖xe3 d6 11. ♗bd2 ♖e7 12. O-O O-O 13. ♖fe1 ♖d8 14. d4 ♗b7 15. d5 ♗b8 16. c4 c6 17. dxc6 ♗xc6 18. cxb5 axb5 19. ♗b3 ♖a5 20. ♖ac1 ♖da8 21. ♗f1 ♗b4 22. a3 ♗a6 23. ♗g3 ♗c5 24. ♗c2 ♗g4 25. ♖e2 ♗e6 26. h3 ♗f6 27. ♖d2 ♖5a6 28. ♖cd1 ♖c8 29. ♗d3 ♖e8 30. ♖c1 ♗c5 31. ♖c3 ♖d8 32. ♗c2 ♗e6 33. ♖c1 ♖c6 34. ♗b3 ♖xc3 35. ♖xc3 ♖c6 36. ♖e3 ♖c5 37. ♖d2 ♗f4 38. ♗c2 ♖c8 39. ♗b1 g6 40. ♖h2 ♖g7 41. ♗f1 ♗e6 42. ♖e3 b4 43. ♗3d2 bxa3



44. ♖xc5 dxc5 45. bxa3 c4 46. f3 c3 47. ♗b3 ♗d4 48. ♗c1 ♗a6 49. ♗e3 ♖b8 50. ♗d3 ♖b2 51. ♖g1 ♗xd3 52. ♗xd3 ♖a2 53. ♗xe5 ♗h5 54. ♗d3 ♖xa3 55. ♗c1 ♗f4 56. ♖h2c2 57. ♖g1 ♗de2+ 58. ♖f2 ♗xc1 0-1

### Torre Attack

**NM Harley Greninger (2213)**

**Peter June (1859)**

*Tacoma, Challengers Cup (2) 2007*

1. d4 ♗f6 2. ♗f3 e6 3. ♗g5 ♗e7 4. ♗bd2 c5 5. e3 b6 6. ♗d3 h6 7. ♗h4 ♗b7 8. c3 d6 9. a4 a6 10. ♖e2 ♗bd7 11. e4 e5 12. dxe5 ♗xe5 13. ♗xe5 dxe5 14. ♗c4 ♗d7 15. ♗d6+ ♖f8 16. ♗xb7 ♖c7 17. ♗xe7+ ♖xe7 18. ♗xa6 ♗b8 19. ♗c4

♖xb7 20. ♗d5 ♗c6 21. ♖h5 g6 22. ♗xc6 ♖xc6 23. ♖xe5+ 1-0

### English Botvinnik

**FM Paul Bartron (2081)**

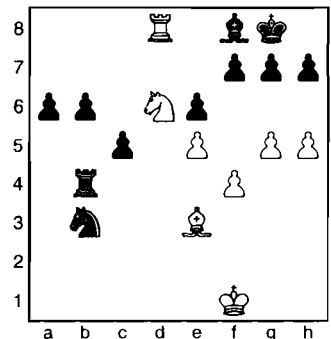
**Ricky Selzler (2148)**

*Tacoma, Challengers Cup (2) 2007*

Annotations by Drayton Harrison

1. e4 c5 2. c4 ♗c6 3. d3 ♗f6 4. ♗e2 e6 5. g3 ♗e7 6. ♗g2 O-O 7. O-O ♖c7 8. ♗bc3 d6 9. f4 a6 10. h3 ♖e8 11. ♗e3 ♖b8 12. a4 b6 13. g4 ♗f6 14. ♗g3 ♗b7 15. g5 ♗d7 16. ♖d2 ♗b4 17. ♗a2 ♗xa2 18. ♖xa2 ♗c6 19. b3 ♖bd8 20. ♖f2 ♖b7 21. h4 d5 22. e5 ♗b8 23. h5 dxc4 24. dxc4 ♗xg2 25. ♖xg2 ♖xg2+ 26. ♖xg2 ♖d3 27. ♗c1 ♗c6+ 28. ♗e4 ♖xb3 29. ♖b2 ♖xb2 30. ♗xb2 ♖d8 31. ♗c3 ♖d3 32. ♖f2 ♗d4 33. ♗d2 ♖f3+ 34. ♖g2 ♖b3 35. ♖c1 ♖b2 36. ♖f1 ♗b3 37. ♖d1 ♖a2 38. ♗e3 ♖xa4 39. ♖d8 ♖xc4? 40. ♗d6!

Now Black must give back the Exchange by 40... ♖d4 41. ♗xd4 ♗xd4 42. ♗c4± or by 40... ♗a5 41. ♗xc4 (41. ♗c8 ♗c6+ ) 41... ♗xc4∞, or ... 40... ♖b4??



41. ♗c8!!+—

... get checkmated!

41... f6

41... g6 42. ♗e7+ ♖g7 43. h6+ ♖h8 44. ♖xf8 mate; 41... h6 42. ♗e7+ ♖h7 43. g6+ fxg6 44. hxg6+ ♖h8 45. ♖xf8 mate 42. g6 1-0

### English Opening

**Krishnan Warriar (1693)**

**Huso Hadzic (2190)**

*Tacoma, Challengers Cup (2) 2007*

1. ♗f3 c5 2. c4 ♗c6 3. g3 g6 4. ♗g2 ♗g7 5. ♗c3 e6 6. O-O ♗ge7 7. e3 d5 8. d4 cxd4 9. ♗xd4 O-O 10. cxd5 ♗xd4 11. exd4 ♗xd5 12. ♗xd5 exd5 13. ♖b3 ♗e6

# Victoria Chess Festival 2008 Grand Pacific Open

March 21<sup>st</sup> - 24<sup>th</sup>, 2008

Come play chess on an island in the Pacific! It doesn't get better than this.  
Escape the harsh Canadian winter. Come to Victoria for the Easter Weekend.

The main event of the Festival, the Grand Pacific Open (GPO) will be a 6 round Swiss with a guaranteed prize fund of \$2000! In addition, there will be a Scholastic Tournament on March 21<sup>st</sup> and a Bughouse Tournament following the GPO on Monday March 24<sup>th</sup>.

Check [www.victoriachessclub.pbwiki.com](http://www.victoriachessclub.pbwiki.com) for updates and more information

## FIDE and CFC Rated

### Top B.C. finisher will qualify for the BC Closed.



The tournament will be held in the Hotel Grand Pacific in Victoria, B.C. and yes this photo was taken in March!  
[www.hotelgrandpacific.com](http://www.hotelgrandpacific.com)

We hope to see you at the 2008 GPO and Victoria Chess Festival! Please spread the word about this event. The end of March is a great time to visit Victoria. Bring your family and spend an extra day or two. The Hotel Grand Pacific is extending the \$95 rate for 3 days before and after the event.

**Bonus Event** Grand Pacific Scholastic Tournament on March 21<sup>st</sup> 10:00 am to 4:30 pm Details.....  
[www.victoriajuniorchess.pbwiki.com](http://www.victoriajuniorchess.pbwiki.com)  
Bughouse on March 24th at 2:00 pm

**Playing Site.** Pender Island Ball Room, Grand Pacific Hotel [www.hotelgrandpacific.com](http://www.hotelgrandpacific.com)  
**Clocks and sets provided.**

**Playing Schedule.** On site registration is from 4:30 PM to 5:30 PM on Friday March 21st. Late arrivals will be paired on an opportunity basis. Rd 1 – Friday, March 21st at 6:00 PM. Rds 2-3 – Saturday, March 22nd at 12:00 noon and 6:00 PM. Rds 4-5 – Sunday, March 23rd at 12:00 noon and 6:00 PM. Rd 6 – Monday March 24th at 10:00 AM. Up to two half point byes for Rds 1 to 5 only.

**Chief TD.** Mark S. Dutton International Arbiter (I.A.) **Deputy TD.** Lynn Stringer I.A.  
**Prizes. \$2000 Guaranteed Prize Fund!** 1<sup>st</sup> 500, 2<sup>nd</sup> 300, 3<sup>rd</sup> 200, 4<sup>th</sup> 100. U2000 300, 150, 100. U1600 200, 100, 50. U1200 Trophies. Trophies for 1<sup>st</sup> and 2<sup>nd</sup> place in all categories. Unrated players are not eligible for section prizes or trophies. CFC, USCF, FQE. FIDE ratings in order of priority will be used for pairings and class prize eligibility.

**Entry Fees.** \$45 before Feb 1st, \$50 before Mar 1st, \$60 after Mar. 1st. US checks accepted at par. Non-CFC members add a \$10 tournament fee. Send cheques to: Brian Raymer, 2386 Dalhousie St. Victoria BC V8R 2H6 - payable to the Victoria Chess Club.

**Time Control.** Game in 90 minutes plus 30 second per move increment.

**Accommodation.** The organizing committee has arranged an excellent rate for you at the Hotel Grand Pacific. Luxury 5 Star Hotel - \$95/night based single or double occupancy. Children under 18 stay free in same room with accompanying adult(s). The hotel is ideally situated on the beautiful inner harbour and includes free high speed internet, free access to health club and ozonated 25 m pool and many other amenities for hotel guests. The special rate is available for rooms until February 21st, 2008 subject to availability. We expect the rooms will sell out at this rate well before February 21st. Book early to avoid disappointment by calling toll free 1-800-663-7550. Quote: MAR08GRAND when booking. Many other hotels are available within a reasonable distance from the playing site. Contact the organizing committee for more information.

**Welcome to out of province and out of country players** The organizing committee will help with travel planning and can arrange pick up at the airport or ferry if requested. Please call for any assistance. For information contact:

Brian Raymer 250-595-0025 [braymer@telus.net](mailto:braymer@telus.net) Organizer  
Paul Leblanc 250-388-5187 [pc-leblanc@shaw.ca](mailto:pc-leblanc@shaw.ca) Organizer  
Roger Patterson [victoria\\_chess@shaw.ca](mailto:victoria_chess@shaw.ca) Organizer

## Registration Form Grand Pacific Open 2008

Name: \_\_\_\_\_ Address: \_\_\_\_\_

CFC Membership Number (if applicable) \_\_\_\_\_

Rating: \_\_\_\_\_ (CFC) \_\_\_\_\_ (USCF) \_\_\_\_\_ (FIDE) \_\_\_\_\_ (FQE)

e-mail and phone \_\_\_\_\_

Amount of cheque enclosed \_\_\_\_\_

\$45 postmarked before Feb 1<sup>st</sup>. \$50 before Mar 1<sup>st</sup>, \$60 after Mar 1<sup>st</sup> Non-CFC members add \$10 or join the CFC) US Checks accepted at par  
Do not mail cheques after March 10<sup>th</sup> After March 10<sup>th</sup> send an email to register.

Byes Requested (indicate round numbers) \_\_\_\_\_

Payable to **Victoria Chess Club**. Mail to Brian Raymer, 2386 Dalhousie St. Victoria, BC V8R 2H6

14. ♖e3 ♗d7 15. ♜ac1 ♜ac8 16. ♜fe1 h6 17. ♗d3 ♖h7 18. ♖d2 ♖f5 19. ♗b3 ♖xd4 20. ♖xd5 ♜cd8 21. ♖b4 ♜fe8 22. ♖xf7 ♖xf2+ 23. ♖xf2 ♗d4+ 24. ♖f1??

24. ♖g2 ♜xe1

24... ♖h3 mate

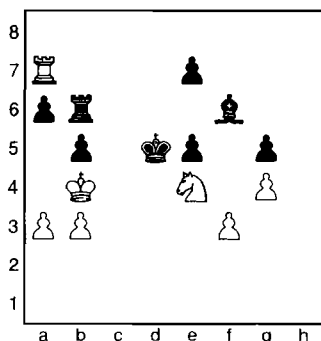
*Caro-Kann Exchange*

**NM Michael MacGregor (2203)**

**FM David Bragg (2200)**

*Tacoma, Challengers Cup (3) 2007*

1. e4 c6 2. d4 d5 3. exd5 cxd5 4. ♖d3 ♖c6 5. c3 g6 6. ♖f4 ♖h6 7. ♖f3 f6 8. O-O ♖f7 9. c4 dxc4 10. ♖xc4 ♖g7 11. d5 ♖ce5 12. ♖b5+ ♖d7 13. ♖xd7+ ♗xd7 14. ♖c3 ♖xf3+ 15. ♗xf3 O-O 16. ♜fe1 ♜fe8 17. ♜ad1 ♜ac8 18. ♗e2 ♖f8 19. ♗e6 ♜ed8 20. h3 ♖g7 21. ♗e2 ♗f5 22. ♖g3 a6 23. ♗e6 ♗xe6 24. dxe6 ♜xd1 25. ♜xd1 ♖e5 26. ♖xe5 fxe5 27. ♜d7 b5 28. a3 ♜c6 29. ♖f1 ♖f6 30. ♜c7 ♜xe6 31. ♖e4+ ♖f5 32. f3 ♜b6 33. b3 g5 34. ♖e2 h5 35. g4+ hxg4 36. hxg4+ ♖g6 37. ♜c8 ♖g7 38. ♜c7 ♖f6 39. ♖d3 ♖f7 40. ♖c3 ♖e6 41. ♖b4 ♖d5 42. ♜d7+ ♖c6 43. ♜a7 ♖d5



44. ♖a5 ♜b8 45. ♜xa6 ♖d4 46. ♜c6 ♖e3 47. ♖xf6 ♖xf3 48. ♖d7 ♜a8+ 49. ♖xb5 e4 50. a4 e3 51. ♜e6 ♜d8 52. ♖c6 e2 53. ♖c7 ♜h8 54. a5 ♜h1 55. b4 e1=♗ 56. ♜xe1 ♜xe1 57. b5 ♜c1+ 58. ♖b7 ♖xg4 59. a6 ♖f4 60. a7 ♜a1 61. a8=♗ ♜xa8 62. ♖xa8 g4 63. b6 1-0

*Caro-Kann Advance*

**LM Viktors Pupols (2202)**

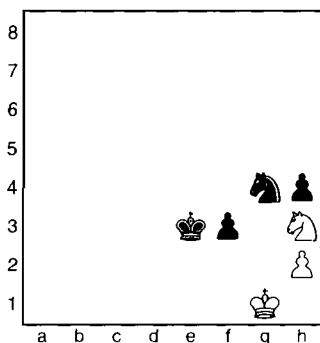
**NM Harley Greninger (2213)**

*Tacoma, Challengers Cup (3) 2007*

**Annotations by Drayton Harrison**

1. e4 c6 2. d4 d5 3. e5 c5 4. dxc5 ♖c6 5. ♖f3 ♖g4 6. ♖b5 e6 7. ♖xc6+ bxc6 8. b4 ♗b8 9. ♗d4 ♖xf3 10. gxf3 ♖e7 11. f4 ♖f5 12. ♗c3 ♖e7 13. ♖d2 f6 14. ♖f3 a5

15. bxa5 ♗b5 16. ♖d2 ♖f7 17. a4 ♗xc5 18. ♗xc5 ♖xc5 19. ♜b1 ♜hb8 20. ♖e2 ♖e7 21. ♜b6 ♖d8 22. ♜xc6 ♖xa5 23. ♖xa5 ♜xa5 24. ♜c7+ ♖g8 25. exf6 gxf6 26. ♜g1+ ♖h8 27. ♜c6 ♜xa4 28. ♜xe6 ♜xf4 29. ♜d1 ♜c8 30. ♜xd5 ♜xc2+ 31. ♖d1 ♜xf2 32. ♜d7 ♜g2 33. ♜e8+ ♜g8 34. ♜xg8+ ♖xg8 35. ♖e2 ♜e4+ 36. ♖f2 ♜e7 37. ♜xe7 ♖xe7 38. ♖d4 ♖f7 39. ♖f3 f5 40. ♖f4 ♖f6 41. ♖f3 h5 42. ♖e1 ♖g6+ 43. ♖g3 f4+ 44. ♖f2 ♖e5 45. ♖c2 ♖f5 46. ♖d4+ ♖e4 47. ♖e6 ♖g4+ 48. ♖g1 h4 49. ♖g5+ ♖e3 50. ♖g2 ♖e5 51. ♖f1 f3 52. ♖h3 ♖g4 53. ♖g1



Black had one hour left, while White was down to fifty seconds with a five-second delay.

53... ♖f6

Another way to win is through *Zugzwang* by 53... ♖e2!? and I was trying to figure out the calculation when Black played 53... ♖f6. The variation works out after 54. ♖f4+ ♖e1! 55. ♖d3+ ♖d2! 56. ♖f2 ♖e3! 57. ♖h3 ♖e1 (*Zugzwang*) 58. ♖f2 ♖e2 (mate in 2!) 59. h3 ♖d5 60. ♖e4 ♖f4 61. ♖f2 ♖d3 62. ♖g4 f2+ and after trading Knights, the endgame is simple (mate in fifteen). My computer (CRAFTY 19 with the Nalimov endgame database) prefers 53... ♖e5! 54. ♖f1 ♖d3 55. ♖g5 ♖f2 56. ♖e1 ♖g4 and mate in thirty.

54. ♖f2

The computer says 54. ♖f1 puts up stronger resistance, e.g. 54... ♖e4 55. ♖g1 ♖c5 56. ♖f1 ♖d3 57. ♖g5 ♖f2 and White must give up the h-pawn with 58. ♖e1 to avoid checkmate in 18 moves if the White King moves toward the corner.

54... ♖e4??

As I was watching, I was considering 54... ♖e2! again. Unfortunately for

Black, he was not using his remaining hour of time for calculating this candidate move. 55. ♖h3 (55. h3 ♖d5 56. ♖e4 ♖f4 57. ♖f2 ♖d3 transposes to a variation listed above) 55... ♖h5 56. ♖f2 ♖f4 finally forcing White to advance his pawn 57. h3 (57. ♖e4 ♖h3+ 58. ♖h1 ♖f2+ is easy) 57... ♖e1 58. ♖g4 ♖e2+ 59. ♖h2 (59. ♖h1 f2 60. ♖h2 ♖g3+ 61. ♖g2 ♖e2-+) 59... f2 60. ♖xf2 ♖xf2-+.

55. ♖h3??

White was too short on time to see that 55. ♖xe4! ♖xe4 56. ♖f2 is a draw, e.g., 56... ♖f4 (56... h3 57. ♖e1 ♖e3 58. ♖f1 f2 stalemate!) 57. ♖g1 ♖e3 58. ♖f1 h3 59. ♖e1 with the opposition.

55... ♖e2??

55... ♖c5!! 56. ♖f1 ♖d3 57. ♖g5 ♖f2! transposes to the 53... ♖e5 variation that was found by computer. 55... ♖c3! may take a few moves longer but should still be winning. 55... ♖g3?? was my idea while watching the game. Unfortunately, it's no good, i.e., 56. hxg3 hxg3 57. ♖f1.

56. ♖f4+ ♖e1

56... ♖d2 57. ♖f1 ♖e3 58. ♖d5+ ♖d4 (58... ♖d3 59. ♖f4+ ♖e3 60. ♖d5+ is another repetition.) 59. ♖f4 ♖e3 60. ♖d5+ repeating the position

57. ♖d3+ ♖d2

57... ♖d1 58. ♖f2+ ♖xf2 59. ♖xf2 is drawn.

58. ♖f4 ♖e3 59. ♖h3 ♖d4 60. ♖f4 ♖e3 Draw

*King's Indian Attack*

**Howard Chen (1993)**

**FM Paul Bartron (2081)**

*Tacoma, Challengers Cup (3) 2007*

1. e4 c5 2. ♖c3 ♖c6 3. ♖f3 g6 4. d3 ♖g7 5. ♖e3 ♖d4 6. g3 d6 7. ♖g2 ♗b6 8. ♗c1 ♖f6 9. h3 ♖d7 10. ♖d1 O-O 11. c3 ♖xf3+ 12. ♖xf3 ♖b5 13. ♗d2 ♖d7 14. O-O ♖e5 15. ♖g2 ♗a6 16. c4 ♖d7 17. ♖h2 ♖c6 18. ♖c3 ♜fe8 19. f4 ♖d4 20. ♜ab1 b5 21. e5 dxe5 22. fxe5 ♖xe5 23. ♖e4 f5 24. ♖xc5 ♖xg3+ 25. ♖xg3 ♗d6+ 26. ♖f2 ♗xc5 27. ♗c3 e5 28. ♖f3 ♜ac8 29. b4 ♗e7 30. ♖xd4 ♗h4+ 31. ♖g2 ♗xd4 32. ♗xd4 exd4 33. ♜be1 ♜e3 34. ♜xe3 dxe3 35. c5 ♖f7 36. d4 ♖e6 37. d5+ ♖e5 38. ♜d1 g5 39. c6 g4 40. hxg4 fxg4



41.cxd7 gxf3+ 42.♟xf3 ♖d8 43.♟xe3  
 ♖xd7 44.♖c1 a6 45.♖c6 ♖d6 46.♖c5  
 ♖xd5 47.♖c6 ♖d4 Draw

**Sicilan Kan**

**Huso Hadzic (2190)**  
**Allen Smith (1978)**

*Tacoma, Challengers Cup (3) 2007*

1.e4 c5 2.♗f3 e6 3.d4 cxd4 4.♗xd4 a6  
 5.♗c3 ♟c7 6.g3 ♗f6 7.♗g2 ♗b4  
 8.♗de2 O-O 9.O-O ♖d8 10.♗g5 ♗e7  
 11.h3 ♗c6 12.♟d2 b5 13.♖ad1 ♗e5  
 14.f4 ♗c4 15.♟c1 ♗b7 16.♖d3 b4 17.  
 ♗d1 ♟c5+ 18.♗f2 h6 19.♗xf6 ♗xf6 20.  
 e5 ♗xg2 21.♟xg2 ♗e7 22.b3 ♗b6 23.  
 c4 bxc3 24.♟xc3 ♟a3 25.♖d2 ♗d5 26.  
 ♟f3 ♗c5 27.♟h2 ♖ac8 28.♖c1 ♗xf2  
 29.♖xc8 ♗xg3+ 30.♗xg3 ♖xc8 31.♗e4  
 ♟c1 32.♟f2 ♟b1 33.♗d6 ♖c1 34.f5  
 ♖h1+ 35.♟g2 ♗e3+ 36.♟xe3 ♟f1+ 0-1

**King's Indian Sämisch**

**Peter June (1859)**  
**Nhon Do (2082)**

*Tacoma, Challengers Cup (3) 2007*

1.e4 d6 2.d4 ♗f6 3.f3 g6 4.♗e3 ♗g7 5.c4  
 O-O 6.♗c3 ♗bd7 7.♟d2 c5 8.♗ge2 a6  
 9.O-O-O b5 10.e5 cxd4 11.♗xd4 dxe5

12.♗xe5 ♟a5 13.♗f4 b4 14.♗d5 ♗xd5  
 15.cxd5 ♟xa2 16.♟xb4 ♗c5 17.♗d4  
 ♗xd4 18.♗c4 ♟a1+ 19.♟c2 ♗f5+ 0-1

**English Opening**

**Krishnan Warriar (1693)**  
**Mark Ryan (1868)**

*Tacoma, Challengers Cup (3) 2007*

1.♗f3 ♗f6 2.c4 g6 3.g3 ♗g7 4.♗g2 d6  
 5.♗c3 O-O 6.b4 a5 7.b5 e5 8.♗b2 ♗bd7  
 9.O-O ♖e8 10.d4 exd4 11.♗xd4 ♗e5  
 12.♟b3 ♗fd7 13.♗e4 ♗c5 14.♗xc5  
 dxc5 15.♗f3 a4 16.♟c2 ♗f5 17.e4  
 ♗xf3+ 18.♗xf3 ♗xb2 19.♖ad1 ♗d4  
 20.exf5 ♟c8 21.fxg6 hxg6 22.♗d5 ♟g7  
 23.♖fe1 c6 24.bxc6 bxc6 25.♗f3 ♖xe1+  
 26.♖xe1 ♖b8 27.♖b1 ♖xb1+ 28.♟xb1  
 ♟e6 29.♟c2 a3 30.♟g2 Draw

**Barry Attack**

**NM Harley Greninger (2213)**  
**NM Michael MacGregor (2203)**

*Tacoma, Challengers Cup (4) 2007*

Annotations by NM Harley Greninger  
 and Drayton Harrison (DH)

1.d4 ♗f6 2.♗f3 g6 3.♗c3 d5 4.♗f4 ♗g7  
 5.e3 ♗f5 6.♗e2 O-O 7.♗e5 c5 8.O-O  
 cxd4 9.exd4 ♗bd7 10.♗f3 ♗b6 11.♗e2

♖c8 12.c3 ♗e4 13.♗g3 ♗xg3 14.hxg3  
 f6 15.♗g4 g5 16.♗c1 ♗xg4?

Here's where I believe Black's problems begin. Although Black succeeds in continuing his initiative, the light-squared Bishop that remains on the board becomes too strong. Better is 16...e5 17.♗e3 ♗e6 18.g4 e4 19.♗e2 ♟d7. 17.♗xg4 f5 18.♗e2 f4?

This move surprised me. In order to win the tournament, Mike needed only a draw, while I needed a full point just to tie. I thought: "He's playing as if he's the one needing the win. He's either following the old adage 'in order to play for a draw, play for the win,' or, perhaps, he simply wants to finish with a perfect score." In any event, he should have attempted to shore up the light squares with ...g5-g4.

Now 18...e5?! 19.dxe5 ♗xe5 20.♗e3 leaves d5 weak.—DH

19.gxf4 gxf4 20.♗g4 ♖c6 21.♖e1± ♖h6 22.♟f3 ♟d6 23.b3 ♖f7

If 23...e5 24.de ♗xe5, White has 25.♗a3! ♟xa3 26.♖xe5 ♟b2 27.♖ae1

**Oregon Class Championships**

**March 8-9**

Co-sponsored by the Oregon Chess Federation and the Reed College Chess Club

**\$1740 Based on 40 entries**

**\$1300 Based on 40 entries**

M/X (2000+)	Class A (U2000)	Class B (U1800)	Class C (U1600)	Class D (U1400)	Class E (U1200 & Unr)
\$400	\$260	\$260	\$260	\$260	\$150
\$200	\$150	\$150	\$150	\$150	\$80
\$120	\$100	\$100	\$100	\$100	\$50
EF: \$60	EF: \$50	EF: \$50	EF: \$50	EF: \$50	EF: \$40

**Time control:** rounds 1-3 40/90, SD/30; rounds 4-5 40/120, SD/60. **Rounds:** Saturday 10-2:15-6:30; Sunday 10-ASAP. **Site:** Vollum College Center, Reed College, 3202 SE Woodstock Boulevard, Portland OR 97202. **Registration:** Saturday 9:00-9:45 a.m. **Misc:** 5-round Swiss format. OCF/WCF & USCF memberships required in all sections. Classes will be combined if fewer than eight people in a section. Players may play up one class. **Byes:** One half-point bye allowed if requested before round 1. **Information:** www.OregonChess.org

Name \_\_\_\_\_  
 Address \_\_\_\_\_  
 USCF ID # \_\_\_\_\_ USCF Exp \_\_\_\_\_ OCF/WCF Exp \_\_\_\_\_ Rating \_\_\_\_\_  
 Email \_\_\_\_\_ Section \_\_\_\_\_ Bye Rds \_\_\_\_\_

Entries: Payable to Oregon Chess Federation; mail to Taylor Bailey 2814 NE Hancock, Portland OR 97212

*"The Biggest Little Chess Tournament in the World"*  
**RENO - FAR WEST OPEN VIII**

A WEIKEL TOURNAMENT  
 HOSTED BY THE SANDS REGENCY CASINO HOTEL

**March 21-23, 2008**  
 EASTER WEEKEND

\$25,000 Based on 250 ♦ \$16,500 Guaranteed  
 40/2, 20/1, G/1/2 ♦ F.I.D.E. ♦ 150 GP Points (Enhanced)  
 6 Round Swiss ♦ 5 Sections

Entry: **\$117** Average! ♦ Rooms: **\$27/\$54!** While they last!

*Plus! Thursday 3/20 Free Lecture by GM Larry Evans, \$15 GM (TBA) Simul, and \$20 Blitz (5 Min.) Tournament, Saturday 3/22 Free GM Larry Evans Clinic and Game Analysis, Sunday 3/23 \$20 Quick Tournament 5 Rd. (G/25)*

**FOR MORE INFORMATION:**  
*Far West Website*  
*www.renochess.org/fwo*  
*Chess Life TLAs*  
*Jan-Feb-Mar 2008 Issues*

**To enter by e-mail or telephone:**  
**Organizer & Chief TD**  
**N.T.D. Jerome V. (Jerry) Weikel**  
**wackyykl@aol.com - (775)747-1405**  
**For room reservations**  
**call the Sands Regency:**  
**1-866-FUN STAY, Code CHE 320.**

**IMPORTANT! IF YOU HAVE QUESTIONS OR ARE UNSURE OF ANY INFORMATION, CALL, WRITE, E-MAIL OR VISIT THE WEBSITE FOR COMPLETE DETAILS BEFORE ENTERING.**

**ENTRY FORM - Far West Open VIII Chess Tournament - Reno, Nevada - March 21-22-23, 2008**

Mail to: Sands Regency Casino Hotel - 345 N. Arlington Avenue - Reno NV 89501

PRINT Name \_\_\_\_\_ Daytime Phone \_\_\_\_\_ USCF/FIDE Rating \_\_\_\_\_

Street Address \_\_\_\_\_ City \_\_\_\_\_ State \_\_\_\_\_ Zip \_\_\_\_\_

USCF I.D. Number \_\_\_\_\_ Exp. Date \_\_\_\_\_ **All pre-registered players please check in at tournament desk on arrival.**

**ENTRY FEE ENCLOSED: (CIRCLE SECTION AND FEE BELOW)** **BYE(S) REQUESTED FOR ROUND(S): (CIRCLE) 1 2 3 4 5 6**

----- OPEN SECTION -----			"A"	"B"	"C"	"D/Under"	UNRATED
GM/IM	2000-Up	1999-Below	1800-1999	1600-1799	1400-1599	1399-Below	Free With
Free	\$119	\$201	\$118	\$117	\$116	\$115	USCF Dues

**FEES ALSO ENCLOSED FOR:**

- Hotel Deposit \$30.65\* (Weekday) or
- Hotel Deposit \$61.29\* (Friday)
- \$15 Thursday GM (TBA) Simul
- \$20 Thursday Blitz (5 Min./U2200)
- \$20 Sunday Quick (5 Rd. - G/25)
- \$49 USCF Dues (Adult)
- \$25 USCF Dues (Junior)
- (\$10) Jr./Sr. Discount Taken Age \_\_\_\_\_

**HOTEL INFORMATION:**

- No Room Needed
- Made By Phone
- Please Make Me a Reservation\*
- Arrival Date \_\_\_\_\_
- Departure Date \_\_\_\_\_
- One Bed  Two Beds  S  NS

\*Send \$30.65 for weekday arrival, \$61.29 for Friday arrival.

**ENTER BY MAIL BEFORE MARCH 1 AND SAVE!**

**Add \$11 after March 1, \$22 on-site. Do not mail after March 14.** Make check m.o. payable to THE SANDS REGENCY or provide credit card information and signature. \$5 service charge on credit card entries.

Visa  Master Card  Am. Exp.

Card Number AND Expiration Date \_\_\_\_\_

Signature \_\_\_\_\_

CHECK ENCLOSED  
 CHARGE MY CARD

**TOTAL FEES: \$**

♖xa2 28. ♕f5! ♗xb3 29. ♗g4+ ♖h8 30. ♗g5 and his attack is irresistible.

24. a4! e6 25. ♕a3 (!—DH)

White activates his bad Bishop and connects his Rooks in preparation for doubling on the e-file.—DH

25... ♗c6 26. ♖e2

26. ♖a2! was a more efficient way to double the Rooks, because the Bishop can retreat to c1 without interfering, e.g., 26... ♕f8 27. ♕c1 ♖a8 28. ♖ae2 ♖c7 29. ♕h5! ♖f5 30. g4!, when it is not possible to play 30... fxg3 because of 31. ♗xg3+ ♖h8 32. ♕xh6.—DH

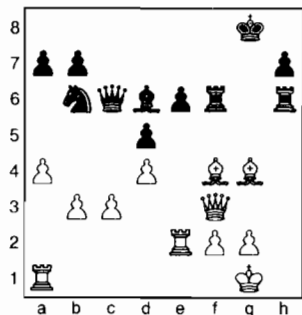
26... ♕f8 27. ♕c1

27. ♕xf8 ♖xf8 28. ♖ae1 ♖ff6 29. c4! dxc4 30. ♗xc6 bxc6 31. a5 ♖d7 32. bxc4 —DH

27... ♖ff6

27... ♖a8!? with the idea ... ♖c7 28. ♕xf4 [28. c4!? ♖c7! 29. ♕h5 ♖f5 30. g4 ♖g5 31. ♖f1!± (31. ♕f7+? ♖xf7 32. ♗xf4+ ♖e8! 33. ♗xg5 dxc4!±)] 28... ♖hf6 29. ♗g3 ♖xf4 30. ♕xe6+ ♖h8 31. ♕xf7 ♖xf7 32. ♖ae1 ♖c7± and White is still better.—DH

28. ♕xf4! ♕d6?!



29. ♕xh6 (!—DH)

Even stronger is 29. ♗g3 as pointed out by my trusty computers, e.g., 29...

♕xf4 30. ♕xe6+ ♖f8 31. ♗g8+ ♖e7 32. ♕xd5+, winning.

29... ♖xf3 30. gxf3! ♖f7

30... e5 31. de ♗xc3 32. ♖c1 ♗d3 33. ed ♗xe2 34. ♖c8+ ♖f7 (34... ♖xc8 35. d7+—) 35. ♕h5+ ♖f6 36. ♖f8+ ♖e6 37. ♖e8+ +—

31. ♖xe6 ♗c7 32. ♖ae1 1-0

Black resigns, as after 32... ♖d7 33. ♕h5+ ♖g8 34. ♖e8+ ♖f8 35. ♖xf8+ ♕xf8 36. ♖e8 ♗d6 37. ♖xf8+, White simplifies to an easily won ending.

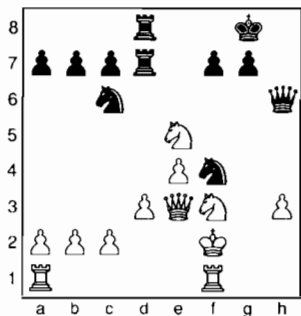
*Giuoco Piano*

**FM David Bragg (2200)**

**Benjamin Calpo (2067)**

*Tacoma, Challengers Cup (4) 2007*

1. e4 e5 2. ♖f3 ♖c6 3. ♕c4 ♖f6 4. d3 ♕c5 5. ♕e3 ♕xe3 6. fxe3 d5 7. exd5 ♖xd5 8. ♗e2 ♕e6 9. O-O O-O 10. ♖bd2 h6 11. g3 ♗e7 12. e4 ♖f6 13. ♕xe6 ♗xe6 14. ♖g2 ♖ad8 15. h3 ♖d7 16. g4 ♖fd8 17. ♖c4 ♖h7 18. ♗e3 ♖f8 19. g5 ♖g6 20. gxf6 ♖f4+ 21. ♖f2 ♗xh6 22. ♖cxe5



22... ♖xh3+ 23. ♖e2 ♖xe5 24. ♗xh6 gxf6 25. ♖xe5 ♖e7 26. ♖g4 ♖d6 27. ♖h1 ♖g6 28. ♖xh3 ♖xg4 29. ♖xh6 ♖g2+ 30. ♖f3! ♖g5

30... ♖xc2? 31. ♖g1+ ♖f8 32. ♖h8 mate

31. ♖ah1 ♖d7 32. ♖1h2 ♖g7 33. ♖6h5 ♖g6 34. ♖g2 ♖dd6 35. ♖hg5 ♖b6 36. b3 ♖bc6 37. c4 ♖cf6+ 38. ♖e3 ♖f1 39. ♖xg6+ fxg6 40. d4 ♖e1+ 41. ♖e2 ♖h1 42. e5 ♖h3+ 43. ♖e4 ♖h4+ 44. ♖d3 g5 45. e6 ♖h8 46. ♖f2 ♖e8 47. ♖f7+ ♖g6 48. d5 g4 49. ♖e3 c6 50. ♖f4 b5 51. ♖xa7 bxc4

52. bxc4 g3 53. ♖a3 cxd5 54. ♖xg3+ ♖f6 55. cxd5 ♖a8 56. ♖e3 ♖e7 57. a3 ♖h8 58. ♖e5 1-0

*French Classical*

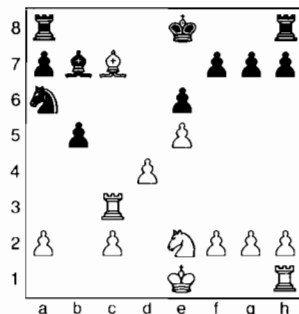
**Allen Smith (1978)**

**LM Viktors Pupols (2202)**

*Tacoma, Challengers Cup (4) 2007*

**Annotatios by Drayton Harrison**

1. e4 e6 2. d4 d5 3. ♖c3 ♖f6 4. ♕g5 ♕e7 5. e5 ♖e4 6. ♕xe7 ♖xc3 7. ♕xd8 ♖xd1 8. ♕xc7 ♖xb2 9. ♖b1 ♖c4 10. ♕xc4 dxc4 11. ♖b4 ♖a6 12. ♖xc4 b5 13. ♖c3 ♕b7 14. ♖e2



14... ♖b4! 15. ♖c5

15. ♖c4 ♖c8—+

15... ♖xc5 16. dxc5 ♕d5 17. c3 a5 18. ♖d2 ♕xa2 19. cxb4 axb4 20. ♖a1 O-O 21. ♖d4 ♕d5 22. ♖b1 ♖a2+ 23. ♖e3 b3 24. c6 ♖c8 25. ♕d6 ♕xc6 26. ♖xc6 ♖xc6 27. ♖xb3 h5 28. ♕e7 ♖cc2 29. ♕h4 ♖e2+ 0-1

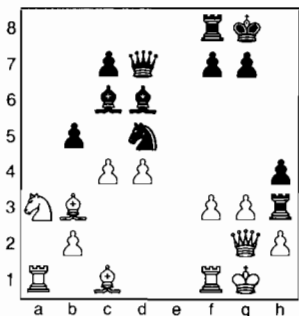
*Ruy Lopez Worrell*

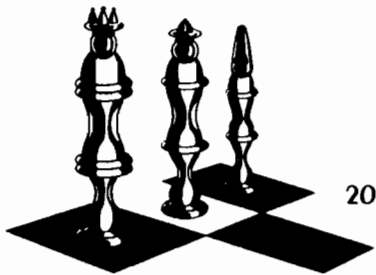
**Huso Hadzic (2190)**

**Howard Chen (1993)**

*Tacoma, Challengers Cup (4) 2007*

1. e4 e5 2. ♖f3 ♖c6 3. ♕b5 a6 4. ♕a4 ♖f6 5. ♗e2 ♕e7 6. O-O b5 7. ♕b3 O-O 8. c3 d5 9. d3 ♕b7 10. exd5 ♖xd5 11. ♖xe5 ♖xe5 12. ♗xe5 ♕d6 13. ♗g5 ♗d7 14. a4 ♖ae8 15. axb5 axb5 16. d4 ♖e4 17. f3 h6 18. ♗d2 ♖h4 19. g3 ♖h3 20. ♗g2 ♕c6 21. ♖a3 h5 22. c4 h4





**ALLEN SMITH**  
CHESS LESSONS

USCF A PLAYER  
2006 PUGET SOUND CHAMPION

**(253) 230-3776 • CHARTERINV@COMCAST.NET**

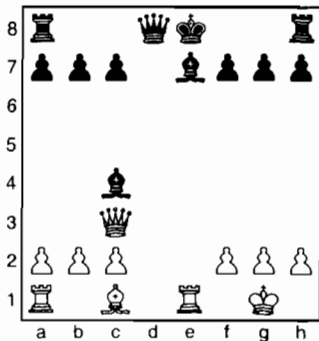
23.cxd5 hxg3 24.dxc6 ♖c8 25.f4 ♗g4  
 26.♔d1 ♗h4 27.♜f3 ♜xh2 28.♗xg3  
 ♜h1+ 29.♔g2 ♗xg3+ 30.♜xg3 ♜xd1  
 31.♔xb5 ♔xf4 32.♔xf4 ♜xa1 33.♔xc7  
 ♜b8 34.b3 1-0

*Two Knights Defense*

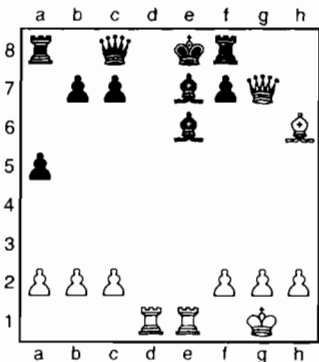
**Peter O’Gorman (1810)**  
**Peter June (1859)**

*Tacoma, Challengers Cup (4) 2007*

1.e4 e5 2.♔f3 ♔c6 3.d4 exd4 4.♔c4  
 ♔f6 5.O-O ♔e7 6.♜e1 d5 7.exd5 ♔xd5  
 8.♔xd4 ♔xd4 9.♗xd4 ♔e6 10.♔c3  
 ♔xc3 11.♗xc3 ♔xc4

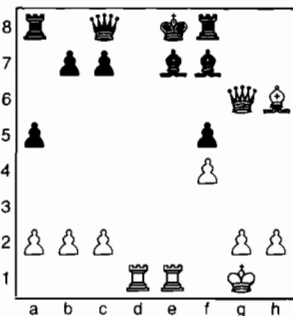


12.♗xg7! ♜f8 13.♔g5 ♔e6 14.♜ad1  
 ♗c8 15.♔h6 a5 16.♗xh7 ♔f5 17.♗g7  
 ♔e6



18.♜e5?!

18.f4!! wins outright, because of the threat of f4-f5. If Black blocks with 18...f5, then 19.♗g6+ ♔f7



**Analysis Diagram**

20.♜xe7+!! ♔xe7 21.♔g5+ ♔e8 22.♗f6  
 mates in 6 moves, i.e., 22...♗d7 23.♜e1+  
 ♗e6 24.♜xe6+ ♔d7 25.♗e7+ ♔c8  
 26.♗xf8+ ♔d7 27.♗xf7+ ♔c8 28.♜e8  
 mate. Nor does 18...♜f5 19.♜xf8 mate or  
 18...♔c5+ 19.♔h1 help.

18...♜a6 19.♗h7 ♔f6 20.♔xf8 ♔xe5  
 21.♗g8 f5 22.♗g5 ♔xf8 23.♜d8+ ♗xd8  
 24.♗xd8+ ♔f7 25.g3 ♜c6 26.c3 a4  
 27.♗a8 ♜b6 28.♗a5 ♔f6 29.f4 ♔d6  
 30.c4 ♜c6 31.♗c3+ ♔g6 32.b3 axb3  
 33.axb3 ♔c5+ 34.♔g2 ♔d7 35.♗h8  
 ♔f7 36.♗h7+ ♔e8 37.h4 ♜b6 38.h5  
 ♔f8 39.♗h8 ♜h6 Draw

**Challengers’ G/10 Playoff**

*Ruy Lopez Schliemann Deferred*

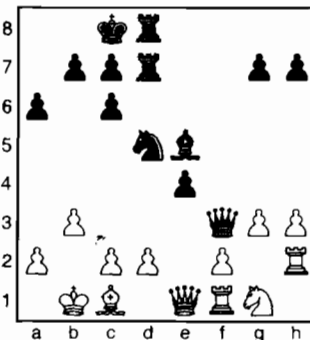
**FM David Bragg (2200)**  
**MacGregor, Michael 2203**

*Tacoma, Challengers Cup Playoff (1) 2007*

1.e4 e5 2.♔f3 ♔c6 3.♔b5 a6 4.♔a4 f5  
 5.exf5 e4 6.♗e2 ♗e7 7.♔xc6 dxc6  
 8.♔d4 ♔f6 9.♔c3 ♗e5 10.♔e6 ♔xe6  
 11.fxe6 ♔d6 12.b3 O-O-O 13.♔b2 ♜he8  
 14.O-O-O ♗xe6 15.h3 ♗f5 16.g3 ♔c5

Black has won a small advantage.

17.♜df1 ♗f3 18.♗e1 ♔d7 19.♔b1  
 ♜ed8 20.♔c1 ♔d4 21.♔e2 ♔e5 22.  
 ♜h2 ♔d5 23.♔g1!



This undeveloping retreat allows White to beat off the Black attack and equalize.

23...♗f5 24.♗e2  
 ♔f6 25.f4 exf3 26.  
 ♜xf3 ♗e5

Black should not have traded Queens, because White has better pawn structure and potential piece locations for the end-

game. Black’s pawn structure is worse and, since his pieces are already placed aggressively, it is hard to improve them.  
 27.♗xe5 ♔xe5 28.♜e2 ♔f6 29.c3 ♜e7  
 30.♜xe7 ♔xe7 31.♔c2 ♔g6 32.d4 b5  
 33.b4 ♜e8

Around this point, the players started to play too fast for me to keep score and I may have got the move order wrong.

34.♔d3 ♔d7 35.♔e2 ♔e7 36.♔d2

I’m not sure if this move (which prevents a later ...♜e1) was actually played, but White needed to spend a tempo to arrive at the position which follows.

36...♔c8 37.g4 h6 38.♔g3

From this point forward the moves are accurately recorded. Someone thought long enough for me to catch up. Both players missed 38.♔xh6!

38...♔b6 39.♔e4

White has improved his Knight and now has the advantage.

39...♔e7 40.♜f7 ♔c4?

40...♜g8 would have kept the damage to the minimum.


41.♜xg7 ♜f8 42.♔xh6 ♜f3+ 43.♔e2  
 ♜xh3 44.♔g5

Black is now losing a piece, but was determined to play quickly, hoping White would lose on time.

44...♔c8 45.♜xe7 ♜h2+ 46.♔d3 ♜h3+  
 47.♔e2 ♜h2+ 48.♔f3 ♜xa2 49.♔c5  
 ♔d6 50.♜h7 ♔b8 51.♔f4 ♜c2 52.  
 ♔xd6 cxd6 53.♔xa6+ ♔c8

And here, both players were moving too fast for keeping score. I think the following moves were ...

54.♜c7+ ♔d8 55.♜xc6 ... 0-1



**Carl A. Haessler**  
 Lessons • Lectures • Exhibitions

USCF Life Master  
 3-Time Oregon Champion

(503) 358-7871  
 ssmith6154@aol.com

And White lost on time about 10 moves later, before he could queen a pawn and deliver checkmate.

**Barry Attack**

**NM Harley Greninger (2213)**  
**NM Michael MacGregor (2203)**

*Tacoma, Challengers Cup Playoff (2) 2007*

**Annotations by Drayton Harrison**

1.d4 ♘f6 2.♘f3 g6 3.♘c3 d5 4.♙f4 ♙g7  
5.e3 c5 6.dxc5 O-O 7.♙b5 a6 8.♙a4 ♖a5  
9.♗d2 ♗xc5 10.♙b3 ♘c6 11.O-O ♙e6  
12.♘d4 ♘d4 13.exd4 ♗c6 14.♙fe1  
♙fe8

This was Black's last chance to play ...b7-b5, although it's not entirely desirable, because White can challenge it later with a2-a4. If Black pushes on with ...b5-b4, White will move the Knight from c3 and then play c2-c3, possibly activating his queenside pawn majority for the endgame.

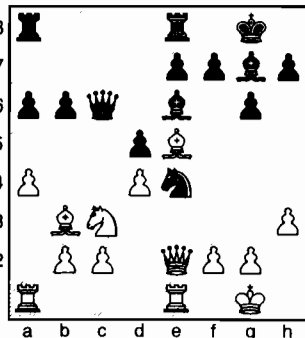
15.a4! b6?!

Now the a6-pawn becomes weak and this factor will decide the game. An alternative was 15...♙ad8, as in the game, allowing White to play either 16.♙e5 or 16.a5 with the threats of 17.♙a4 as well as the maneuver ♘a4-b6. Black's position is unpleasant, but not actually losing and White would still have the burden of finding a winning plan of attack under time pressure.

16.♙e5 ♙ad8 17.♗e2! ♙a8?!

17...a5 gives up the b5-square to the White Knight. However, after 18.♘b5 ♘e4 19.♙xg7 ♙xg7 20.f3 ♘d6, White has an edge, but Black's position is more defensible than in the game.

18.h3 ♘e4?



Sensing that his position is worse, Black decides not to let White methodically dominate the game, but to create

complications and counterplay. Unfortunately, this does not turn out well.

19.♘xe4 ♙xe5 20.dxe5 dxe4 21.♙xe6 ♗xe6 22.♗xe4

White has won a solid pawn and Black still has weak pawns on the queenside and lacks counterplay.

22...♙ac8 23.b3 a5

Transferring the weakness from a6 to b6.

24.c4 ♙cd8 25.♙ad1 ♗c8 26.♙d5

26.e6 was another win, but White is justified in continuing his plan for end-game domination.

26...e6 27.♙d6 ♗c5 28.♙ed1

White is obviously winning by this stage.

28...♙c8 29.♗d4

Exchanging off Black's only active piece will ensure that Black will not have counterplay. This is good endgame technique.

29...♗xd4

Black's original intention was 29...♗b4, but then he saw 30.♙xb6. Black inquired whether he had to move the Queen because of touch-move, but White said that Black could play whatever he wanted to.

30.♙1xd4 ♙b8 31.♙d7 ♙ec8 32.♙4d6 ♙f8 33.♙a7 ♙d8 34.♙xd8+ ♙xd8 35.♙b7 ♙d1+ 36.♙h2 ♙e1 37.♙xb6

37.f4 g5 38.fxg5 ♙xe5 39.♙xb6 ♙xg5 40.♙b5+- is an alternative.

37...♙xe5 38.♙b5 ♙e2 39.♙xa5 ♙xf2 40.c5 ♙c2 41.b4 ♙g7

41...♙e7 may have been played instead. I'm not sure. Both players were moving quickly.

42.♙a7 ♙f6 43.♙c7 ♙c4 44.b5 ♙xa4 45.b6 ♙b4 46.b7 ♙e5 47.c6 ♙d6 48.♙c8 h5 49.b8=♗+ ♙xb8 50.♙xb8 ♙xc6 51.♙d8 h4 ... 1-0

I was unable to record the remaining moves. White was not in serious time trouble, and was able to force Black to resign several moves later. With this game Harley Greninger finally won the right to play in the 2008 Washington Championship.

**Challengers' Cup Reserve**

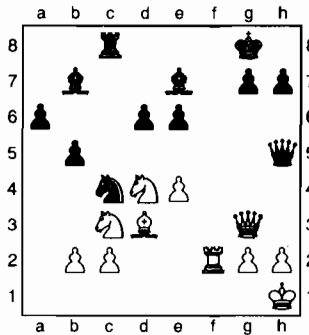
*Sicilian Scheveningen*

**Jeremy Jusak (1556)**

**Stephen Buck (1783)**

*Tacoma, Challengers Reserve (2) 2007*

1.e4 c5 2.♘f3 d6 3.d4 cxd4 4.♘xd4 ♘f6  
5.♘c3 a6 6.♙e2 e6 7.f4 ♗c7 8.O-O ♙e7  
9.♙e3 ♘c6 10.♘b3 b5 11.a3 O-O 12.f5  
♘e5 13.♘d2 ♙b7 14.♙f4 ♙fd8 15.fxe6  
fxe6 16.♙xe5 ♗c5+ 17.♙h1 ♗xe5  
18.♙d3 ♙ac8 19.♘f3 ♗h5 20.♗d2  
♘g4 21.♗f4 ♙f8 22.♗g3 ♘e3 23.♙f2  
♘c4 24.♙b1 ♘xa3 25.♙bf1 ♘c4 26.  
♘d4 ♙xf2 27.♙xf2



27...♗h6 28.♗g4 ♘xb2 29.♘xe6 ♘xd3 30.cxd3 ♙xc3 31.♗f5 ♙c1+ 0-1

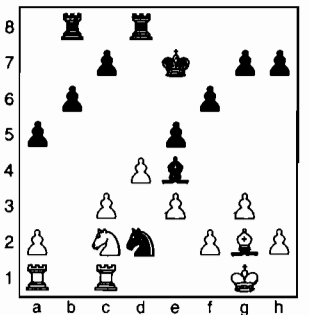
*English Opening*

**Stephen Buck (1783)**

**David Meliti (1757)**

*Tacoma, Challengers Reserve (3) 2007*

1.c4 e5 2.♘c3 ♘f6 3.g3 d5 4.cxd5 ♘xd5  
5.♙g2 ♘xc3 6.bxc3 ♙c5 7.♘f3 ♘c6  
8.O-O f6 9.♗b3 ♙b8 10.♙a3 ♙xa3  
11.♗xa3 ♗e7 12.♗xe7+ ♙xe7 13.d4  
♙g4 14.e3 ♙hd8 15.♘d2 ♙e2 16.♙fc1  
♙a6 17.♘e4 ♙c4 18.♘c5 ♘a5 19.♘e4  
b6 20.♘d2 ♙d3 21.♘f3 ♘c4 22.♘e1  
♙g6 23.♘c2 a5 24.♙f1 ♘d2 25.♙g2  
♙e4



26.♘e1 ♙xg2 27.♙xg2 ♘c4 28.♘f3 c6 29.♙f1 e4 30.♘g1 a4 31.a3 b5 32.♘e2 ♘d2+ 33.♙g2 ♘b3 34.f3 exf3+ 35.♙xf3

♖xa1 36. ♖xa1 ♖d6 37. ♖f4 f5 38. ♖d3  
 ♖e8 39. ♖e5 ♖xe5 40. dxe5+ ♖xe5  
 41. ♖d1 ♖b7 42. ♖d4 g5 43. ♖d8 c5 44.  
 g4 fxg4+ 45. ♖xg4 h6 46. ♖h5 ♖b6 47.  
 ♖h8 ♖d5 48. ♖e8 ♖e6 49. ♖d8+ ♖c4  
 50. ♖b8 ♖xe3 51. ♖xh6 ♖h3+ 52. ♖xg5  
 ♖xh2 53. ♖f5 ♖a2 54. ♖e5 ♖xa3 55.  
 ♖d6 ♖xc3 56. ♖c8 ♖d3+ 0-1

**King's Indian Attack**

**David Meliti (1757)**

**Jingzhou Lai (1613)**

*Tacoma, Challengers Reserve (4) 2007*

1. e4 e6 2. d3 d5 3. ♖d2 ♖f6 4. g3 c5  
 5. ♖g2 ♖c6 6. ♖gf3 ♖e7 7. O-O O-O  
 8. ♖e1 ♖c7 9. ♖e2 b5 10. e5 ♖d7 11. ♖f1  
 ♖a6 12. h4 b4 13. ♖f4 c4 14. d4 ♖a5  
 15. ♖e3 ♖ab8 16. ♖1h2 ♖a4 17. b3 ♖a3  
 18. h5 ♖b2 19. h6 g6 20. ♖d2 ♖a3 21.  
 ♖g4 ♖a5 22. ♖h3 ♖d8 23. ♖g5 ♖b6  
 24. ♖ad1 c3 25. ♖e3 ♖xd4 26. ♖xd4  
 ♖c5 27. ♖ed1 ♖xd4 28. ♖xd4 ♖e2  
 29. ♖xb6 ♖xb6 30. ♖e1 ♖xg4 31. ♖xg4  
 ♖a6 32. ♖a1 ... 1-0

In mutual time trouble, the players stopped recording. Black ran out of time some moves later.

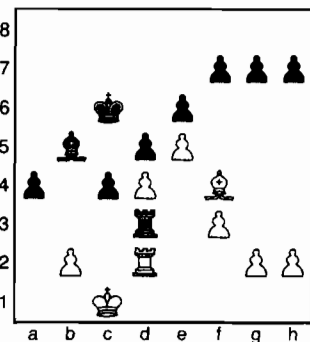
**Sicilian Richter-Rauzer**

**Ramsamy Subramani (1305)**

**Stephen Buck (1783)**

*Tacoma, Challengers Reserve (4) 2007*

1. e4 c5 2. ♖f3 d6 3. d4 cxd4 4. ♖xd4 ♖f6  
 5. ♖c3 a6 6. ♖g5 e6 7. ♖e2 ♖e7 8. O-O  
 ♖c6 9. ♖b3 b5 10. a3 ♖b7 11. ♖d2 ♖c7  
 12. ♖ad1 ♖d8 13. ♖h1 ♖e5 14. f3 O-O  
 15. ♖f4 ♖c4 16. ♖xc4 bxc4 17. ♖c1  
 ♖b6 18. ♖a4 ♖b5 19. ♖b4 ♖xb4 20.  
 axb4 d5 21. e5 ♖d7 22. c3 ♖c6 23. ♖c5  
 ♖xc5 24. bxc5 ♖xc5 25. ♖e2 a5 26. ♖d4  
 ♖xd4 27. cxd4 ♖b8 28. ♖f2 ♖b3  
 29. ♖a1 a4 30. ♖a3 ♖fb8 31. ♖xb3 ♖xb3  
 32. ♖c2 ♖f8 33. ♖g1 ♖e7 34. ♖f2 ♖d7  
 35. ♖e2 ♖b5 36. ♖d1 ♖c6 37. ♖c1 ♖d3  
 38. ♖d2



38...c3 39. bxc3 ♖xc3+ 40. ♖c2 ♖xc2+  
 41. ♖xc2 ♖f1 42. ♖c1 ♖xg2 43. f4 ♖b5  
 44. ♖c3 ♖f1 45. h4 ♖e2 46. ♖a3 f6 47.  
 ♖f8 fxe5 48. fxe5 g6 49. ♖e7 ♖c4 50.  
 ♖a3 ♖b3 51. ♖c1 ♖c6 52. ♖d2 ♖d7 53.  
 ♖e3 ♖e8 54. ♖d2 ♖f7 55. ♖e3 ♖g7 56.  
 ♖d2 h6 57. ♖e3 ♖d1 58. ♖b2 g5 59.  
 hxg5 hxg5 60. ♖xg5 ♖g6 0-1

**French Defense**

**Alex Lopez (353)**

**Calvin Oberly (1069)**

*Tacoma, Challengers Reserve (4) 2007*

1. d4 d5 2. ♖f3 ♖c6 3. ♖c3 e6 4. e4 dxe4  
 5. ♖xe4 h6 6. a3 ♖e7 7. c3 ♖f6 8. ♖d3  
 O-O 9. b4 ♖d6 10. ♖e2 ♖d5 11. c4 ♖f4  
 12. ♖xf4 ♖xf4 13. g3 ♖g5 14. b5 ♖a5  
 15. h4 ♖f6 16. O-O-O b6 17. ♖d2 ♖b7  
 18. ♖e3 ♖xe4 19. ♖xe4 ♖b3+ 20. ♖c2  
 ♖xd2 21. ♖xd2 ♖e8 22. ♖d3 a6 23. ♖a1  
 axb5 24. cxb5 ♖xd4 25. ♖xd4 ♖a4  
 26. ♖d1 ♖a5 27. a4 e5 28. f4 exd4  
 29. ♖xd4 ♖xd4+ 30. ♖xd4 ♖e1 31. ♖c4  
 g6 32. g4 ♖e4+ 33. ♖d5 ♖xf4 34. h5  
 gxh5 35. gxh5 ♖f5+ 36. ♖c6 ♖c5+  
 37. ♖d7 ♖a8 38. ♖a2 ♖a7 39. ♖c2 c6+  
 40. ♖d6 ♖d5+ 41. ♖xc6 ♖xd1 42. ♖c4  
 ♖a1 43. ♖xb6 ♖1xa4 44. ♖xa4 ♖xa4  
 45. ♖c6 ♖b4 46. ♖c5 ♖b1 47. b6 f5  
 48. ♖c6 f4 49. b7 f3 50. ♖c7 f2 51. b8=♖-  
 ♖xb8 52. ♖xb8 f1=♖ 0-1

**English Opening**

**David Meliti (1757)**

**Jeremy Jusak (1556)**

*Tacoma, Challengers Reserve (5) 2007*

1. c4 c5 2. ♖f3 ♖c6 3. ♖c3 ♖f6 4. d4 cxd4  
 5. ♖xd4 g6 6. g3 ♖g7 7. ♖g2 O-O 8. O-O  
 ♖b6 9. ♖c2 d6 10. b3 ♖e6 11. ♖b2 ♖d7  
 12. ♖b1 ♖c5 13. ♖d5 ♖xd5 14. ♖xd5?  
 ♖xb2 15. ♖xb2 ♖a4 16. ♖bb1 ♖c3  
 17. ♖g5 ♖xb1 18. ♖xb1 ♖c7 19. ♖e3 e6  
 20. ♖f6 ♖ab8

20...♖d8

21. ♖g4 ♖fc8 22. ♖h6+ ♖f8 23. ♖h3  
 ♖d7 24. ♖d1 ♖b4 25. ♖xd6 1-0

**Semi-Slav Meran**

**Jingzhou Lai (1613)**

**Stephen Buck (1783)**

*Tacoma, Challengers Reserve (5) 2007*

1. d4 d5 2. c4 c6 3. ♖c3 ♖f6 4. e3 e6 5. ♖f3  
 ♖e7 6. ♖d3 O-O 7. O-O dxc4 8. ♖xc4 b5  
 9. ♖d3 a6 10. e4 c5 11. e5 ♖d5 12. ♖b1  
 ♖b7 13. ♖e2 cxd4 14. ♖xd4 ♖xc3 15.

bxc3 ♖d5 16. f3 ♖c5 17. ♖e3 ♖xe5  
 18. ♖e1 ♖d7 19. ♖d2 ♖b6 20. ♖d3 g6  
 21. ♖c2 ♖c4 22. ♖h6 ♖h5 23. ♖xf8  
 ♖xf8 24. f4 ♖d5 25. ♖e4 Draw

**Sicilian Sozin Attack**

**Amith Vanmane (1086)**

**August Piper (1500)**

*Tacoma, Challengers Reserve (5) 2007*

1. e4 c5 2. ♖f3 d6 3. d4 cxd4 4. ♖xd4 ♖f6  
 5. ♖c3 a6 6. ♖c4 e6 7. ♖e3 ♖bd7 8. f3  
 b5 9. ♖b3 ♖c5 10. a3 ♖xb3 11. ♖xb3  
 ♖b7 12. ♖d2 ♖c8 13. O-O-O ♖c7 14. g4  
 d5 15. exd5 exd5 16. ♖he1 ♖e7 17. ♖c5  
 ♖e4 18. fxe4 ♖xc5 19. exd5+ ♖d7 20.  
 ♖xc5+ ♖xc5 21. d6 ♖he8 22. ♖e7+  
 ♖xe7 23. dxe7+ ♖d5 24. ♖xd5+ ♖xd5  
 25. ♖xd5 ♖e8 26. b4 ♖c6 27. ♖b2 ♖d6  
 28. ♖c7+ ♖xe7 29. ♖xd6 ♖xd6 30. ♖xa6  
 ♖e5 31. h3 g6 32. ♖b3 f5 33. ♖c5 f4  
 34. ♖d3+ ♖e4 35. ♖xf4 1-0

**Sicilian Scheveningen**

**Calvin Oberly (1069)**

**Ramsamy Subramani (1305)**

*Tacoma, Challengers Reserve (5) 2007*

1. e4 c5 2. ♖f3 d6 3. d4 cxd4 4. ♖xd4 ♖f6  
 5. ♖c3 a6 6. ♖e2 e6 7. ♖g5 ♖e7 8. ♖f3  
 ♖c7 9. O-O b5 10. ♖d4 ♖b7 11. ♖f3  
 O-O 12. ♖e1 ♖bd7 13. a3 h6 14. ♖f4 e5  
 15. ♖f5 ♖c5 16. ♖xe7+ ♖xe7 17. ♖g3  
 ♖fd8 18. ♖d5 ♖xd5 19. exd5 ♖ac8 20. b3  
 f5 21. c4 ♖f6 22. ♖e2 bxc4 23. bxc4 f4  
 24. ♖b1 fxg3 25. hxg3 ♖c7 26. f3 ♖f8  
 27. ♖f1 ♖c8 28. g4 ♖d7 29. ♖b4 ♖b7  
 30. ♖xb7 ♖xb7 31. ♖b3 ♖c5 32. ♖e3  
 ♖f4 33. ♖xf4 exf4 34. ♖b1 ♖f7 35. ♖b6  
 ♖e7 36. ♖f2 g5 37. g3 fxg3+ 38. ♖xg3  
 ♖f4 39. ♖b8 ♖e8 40. ♖a8 ♖g6 41. ♖h8  
 ♖d3 42. ♖xd3 ♖xd3 43. ♖xh6 ♖f6  
 44. ♖h5 ♖e5 45. ♖h7+ ♖f7 46. ♖xf7+  
 ♖xf7 47. f4 gxf4+ 48. ♖xf4 ♖g6 49. c5  
 ♖d3+ 50. ♖e4 ♖xc5+ 51. ♖d4 ♖g5  
 52. ♖c4 ♖xg4 53. ♖b4 ♖f4 54. ♖c4  
 ♖e4 55. ♖b4 ♖xd5 56. ♖a5 ♖c4  
 57. ♖b6 0-1

**From the Business Manager:**

Please send member-  
 ships and address  
 changes directly to the  
 business manager's listed  
 address. Sending to the  
 PO Box in Seattle may  
 result in a two-week delay  
 in processing your mail.

# Spokane Report

by Kevin Korsmo and David Griffin

## Successful Fundraiser at Riverpark Square

Riverpark Square in downtown Spokane was the site of a successful youth-simul to raise funds for the Gary Younker Foundation on October 27. Nearly \$700 was raised for the Foundation from donors, as well as passersby and casual chess players who stopped to play in the event.

Challengers paid \$1 per game to play the volunteer junior players. Anyone who won or drew against our young champions won a prize from the 54 donated gifts solicited by Dave Griffin from area merchants. The remaining prizes were raffled off among the winners and those who purchased raffle tickets.

The Gary Younker Foundation is a non-profit organization devoted to promoting chess in eastern Washington, with a special emphasis on youth events. The foundation is named in honor of the late Gary Younker, a Spokane chess promoter who died young from cancer. Gary worked hard to promote chess in the Inland Empire region and was especially interested in youth chess. Gary's friends formed the foundation after his death to continue his legacy of service to regional chess.

The Younker Foundation has supported the last seven Dave Collyer Memorial tournaments and two events in Richland. It also is one of the sponsors of the 2009 Washington State Elementary Chess Championships to be held in Spokane.

## Turkey Travelers Have Hot Time

The 2007 Turkey Open drew eleven Spokane players to Missoula on the weekend of November 3-4. Billings' David Duke scored 4.5 to win the event. Six players finished second with 3.5 scores, including our own John Julian, Dave Meliti, and Dave Rowles. In addition to sharing the second place prize money, the three also won Montana

Chess Association memberships compliments of Dave Griffin and tournament organizers. There were plenty of other local winners as well. Zach Countryman shared the U1800 section prize. Dave Griffin, who scored 3.0, won the Class C prize. Dawn Fields, making a comeback to tournament chess, claimed the Class D prize. Jim Burney scored the top upset prize with his first round victory over a 1700 player.

The event featured some excitement when a fire alarm went off early in the second round, disrupting play for 40 minutes while firefighters arrived to check out the building. Fortunately, the weather was quite pleasant and many of the displaced players took advantage of the break to make a coffee or pizza run to nearby establishments. Missoula Fire Marshal Robert Rajala was one of the players, a fact that guaranteed a thorough inspection by the local firefighters when they arrived on the scene! Safety is ensured in the future, as Rajala will be taking over as tournament director for the Turkey from retiring Bill McBroom, who has overseen the event for many, many years.

## Game/10 Tourney Was Big!!

The fourth installment of the Spokane G/10 tourney was the largest ever, with 12 players taking part in the double-round-robin event at the Valley Library on November 10. Top seed John Julian took home the \$100 first prize with a score of 20-2. Second place went to James Stripes (18-4). The U1600 prize went to Pullman's Richard Schumaker (13.5-8.5). Newcomer Dwane Anderson scored ten points in winning the U1300 prize. ■

**Please check your mailing label  
and PLEASE RENEW!!**

**Please submit changes of address  
promptly to the Business Manager.**

**Please make checks payable to  
Northwest Chess, not WCF or OCF.**

# Old Guys

## Rule:

## Bartron Wins 2008 Gresham Open

by Neil Dale

Hopefully, Paul Bartron is not of fended, but he certainly is no spring chicken. He defeated Oregon champion Radu Roua in round three, Andy May in the fourth round, and met his youngest opponent, Howard Chen in the last round. It was not exactly that old age and guile prevailed over youth in this last match, as the game ended in a draw, but that was all Bartron needed to claim the title and first place money. Chen had drawn Nick Raptis in the fourth round, and entered the final game with half-a-point less.

Six players finished with four points: Howard Chen, Nick Raptis, Radu Roua, Pablo Pena, and Ethan Peake. The U1800 honors were divided between David Bannon and Drayton Harrison with three points apiece. In the U1600 group, the prizes went to Tony Midson and Samir Sen with 2.5 points each, and, in the U1400, first went to Logan MacGregor with two points, while Dana Hannibal and Robert Nisbet shared the second prize moneys with 1.5 each.

The weather gods were kind again this year, providing us with perfect chess playing weather, cool and rainy. Mt. Hood Community College provided a pretty much perfect site. Forty-six players showed up, and thus we were able to provide each pair of players with their own table. Hey, they all could feel like Grandmasters in that respect. The Portland Chess Club sponsored the tournament and would like to thank all who attended. Grisha Alpernas and Neil Dale provided the TD crew. ■

# El Norteamericano Puede Jugar

## Chess Vacationing in Europe

Over the past decade, I have been encouraging my fellow chess devotees from the Northwest to try a European event for an enhanced experience in culture and competition. Since 1998, I have enjoyed playing in no fewer than six tourneys at various sites in Switzerland, Italy and Spain.

In my experience, tournaments in Europe are conducted on a higher plane than they are in the states. There is less emphasis on gimmicks to maximize revenue (vis-a-vis the US Open) and more emphasis on promoting quality and integrity. True, better access to corporate sponsorship makes a difference.

Typically, you play one round per day in the late afternoon over nine or 10 days. Because pairings are made shortly after the completion of each round, you have most of the day to search databases in preparation for your opponent. The downside, of course, is that with millions of recorded games available on databases today, the other guy has time to prepare for you. If preparing for the round is not your cup of tea, you have the day to sightsee, practice the local language, or seek new contacts.

Beginning with my first European tourney in Aosta, Italy, in 1998, I have had the pleasure of preparing for the likes of IM Stefano Tatai, GM Pia Cramling, and GM Janis Klovans.

When you arrive at a playing site in Europe, boards, pieces and clocks are in place at the commencement of play. Because local businesses (such as banks and newspapers) often subsidize prize funds and honoraria, entry fees are reasonable. At the close of a European event, organizers invariably hold an awards ceremony and/or a banquet.

Time controls are becoming faster these days. Game in 90 minutes or two hours with a 30-second increment seems to be the norm. Hence, games are typically over in four to five hours. My take is that one reason for the quickened pace is to make it more difficult for scowflaws to sneak off to access computers.

In late July, 2007, I managed a score of six of nine in the Second International Open in Oviedo, Spain, good for a tie for 14<sup>th</sup> place and a prize of 50 Euros. Alas, with inflation and the declining dollar, that covered about one day in a modest hotel.

Moral: Take your pick of any of a slew of upcoming events to be found on the FIDE website. But stay the heck out of Europe if you are planning on monetary gain.

The Oviedo tournament was won by IM Yuri Gonzalez, whom I succumbed to in round two. At the outset of the event, local newspaper and sponsor *La Nueva Espana* described yours truly as "El norteamericano.... con sus 2132 de elo, es una inc6gnita que dar4 colorido extra al evento." Even I could work that out on cognates.

My most memorable encounter was against a fidgety, 11-year-old Jaime Santos-Latosa, whose father informed me post game that the lad is the current champion of all Spain in his age group.

In our game, he rattled off his first four moves with blinding speed. So, I chose to depart from my usual 4...c5 against his Classical Nimzo-Indian, a decision that brought a look of surprise and disappointment from my opponent. No doubt he was hoping for a variation along the lines of my drubbing at the hands of Pia Cramling at Malaga, 2000. Still, I was impressed with the maturity of his play.

*QGD Ragozin*

**Jaime Santos-Latasa (1913)**

**David Rupel (2132)**

*Oviedo 2007*

1. d4 ♘f6 2. c4 e6 3. ♘c3 ♙b4 4. ♖c2  
O-O 5. ♘f3 d5 6. cxd5 exd5 7. ♙g5 c6  
8. e3 h6 9. ♙h4 ♘bd7 10. ♙d3 ♚e8  
11. O-O ♙e7 12. ♙g3 ♘f8 13. ♚ab1 a5  
14. a3 ♘h5 15. b4 ♘xg3 16. hxg3 axb4  
17. axb4 ♙d6 18. b5 ♙g4 19. bxc6 bxc6  
20. ♘a4 ♚c8 21. ♙f5 ♙xf5 22. ♖xf5  
♘e6 23. ♚fc1 g6 24. ♖d3 ♚c7 25. ♚c2  
♖e7 26. ♚bc1 ♚a8 27. ♘b6 ♚a3 28.  
♚c3 ♚xc3 29. ♚xc3 ♖d8 30. ♖c2 ♖e8  
31. ♘e5 ♙xe5 32. dxe5 d4 33. exd4  
♘xd4 34. ♖e4 ♘b5 35. ♚c1 ♖e6 36.  
♘a4 ♖d5 37. ♖xd5 cxd5 38. ♚b1 ♘c3  
39. ♘xc3 ♚xc3 40. ♚b8+ ♗g7 41. ♚d8  
♚d3 Draw

The wildest game I witnessed this trip was this comeback by GM Omar Almeida of Cuba who was in a bad way with three struggling minors versus a Queen.

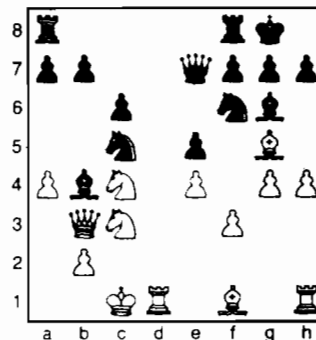
*QGD Slav*

**GM Omar Almeida-Quintana (2501)**

**Ivan Fernandez-Torre (2112)**

*Oviedo 2007*

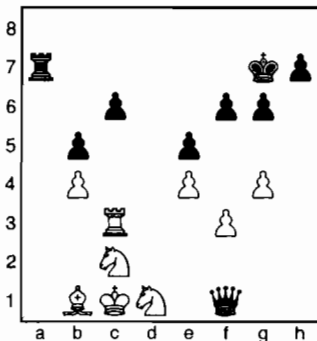
1. d4 d5 2. ♘f3 c6 3. c4 ♘f6 4. ♘c3 dxc4  
5. a4 ♙f5 6. ♘e5 e6 7. f3 ♙b4 8. ♙g5  
♖a5 9. ♙d2 ♖d8 10. e4 ♖xd4 11. ♘xc4  
♙g6 12. ♖b3 ♖c5 13. ♙f4 ♖e7 14.  
O-O-O O-O 15. h4 ♘bd7 16. g4 e5 17.  
♙g5 ♘c5



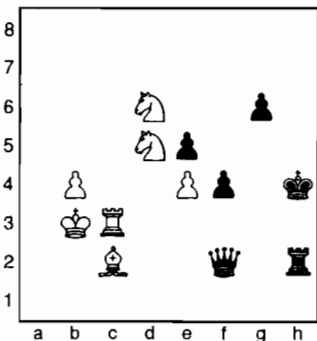
18. ♖xb4 ♘d3+ 19. ♙xd3 ♖xb4 20.  
♙xf6 gxf6 21. h5 ♚fd8 22. ♘e3 a6



23. ♖h2 b5 24. hxg6 fxg6 25. ♖c2 ♔g7  
 26. ♗e2 ♖ac8 27. axb5 axb5 28. ♖c3  
 ♗a5 29. ♗c2 ♗b6 30. ♗b3 ♖xd1+ 31.  
 ♗xd1 ♖d8 32. b4 ♗a7 33. ♗c2 ♗e7  
 34. ♖b3 ♖a8 35. ♗b1 ♖a4 36. ♗c2  
 ♗a7 37. ♖d3 ♗f2 38. ♗c3 ♖a7 39. ♗d1  
 ♗e2 40. ♖e3 ♗f1 41. ♖c3



41... ♖d7 42. ♗ce3 ♗e2 43. ♗c2 ♖d4  
 44. ♖xc6 ♗xf3 45. ♗d5 ♗xg4 46. ♖c7+  
 ♔h6 47. ♖xh7+ ♔g5 48. ♗1c3 ♗g1+  
 49. ♔b2 ♗f1 50. ♖b7 ♖d2 51. ♖c7  
 ♗d3 52. ♗b1 ♗d4+ 53. ♔b3 ♖h2 54.  
 ♗a3 f5 55. ♗xb5 ♗f2 56. ♖c3 f4 57.  
 ♗d6 ♔h4



58. b5 g5 59. b6 g4 60. b7 ♗a7 61. ♖c8  
 ♖h3+ 62. ♔c4 ♗a2+ 63. ♔b5 ♗b2+

64. ♗b4 g3 65. ♗f5+ ♔g4 66. b8=♗ g2  
 67. ♖g8+ ♔f3 68. ♗d6 1-0

The week after Oviedo found me in a coastal suburb of Barcelona, as a participant in the Badalona International XXXIII. This event attracted a score of titled players and competition was much stiffer as there was also a group B for players under elo 2000. I managed 4½ of nine, but was disappointed with a last round loss that kept me out of a class prize.

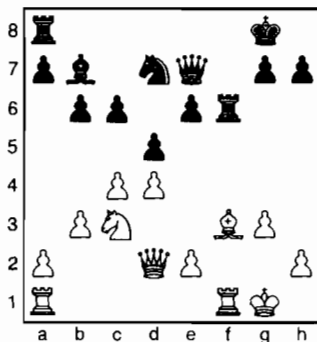
I had to defend tenaciously with my bad Bishop versus a dominating Knight to salvage a half point in the following encounter:

*Dutch Stonewall*

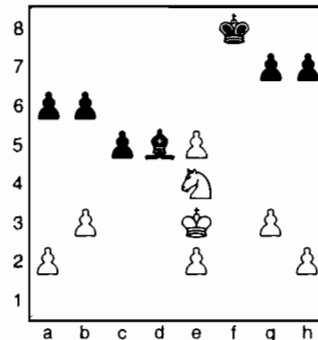
Joaquim Gutierrez-Clares (2272)  
 David Rupel (2132)

*Badalona 2007*

1. d4 ♗f6 2. ♗f3 e6 3. g3 d5 4. ♗g2 c6  
 5. O-O ♗e7 6. c4 ♗e4 7. b3 O-O 8. ♗fd2  
 f5 9. ♗xe4 fxe4 10. ♗a3 ♖f6 11. ♗xe7  
 ♗xe7 12. ♗c3 ♗d7 13. ♗d2 b6 14. f3  
 exf3 15. ♗xf3 ♗b7



16. ♗g2 ♖af8 17. ♖xf6 ♗xf6 18. ♖f1  
 c5 19. cxd5 exd5 20. ♗g5 ♗e6 21. ♗e5  
 ♗xe5 22. dxe5 ♗e4 23. ♗xe4 ♖xf1+  
 24. ♔xf1 dxe4 25. ♗b5 a6 26. ♗d6 ♗a8  
 27. ♔f2 ♔f8 28. ♔e3 ♗d5 29. ♗xe4



29... c4 30. bxc4 ♗xc4 31. a3 b5 32.  
 ♗d6 ♗b3 33. ♔d4 ♗d1 34. ♔c5 ♗xe2  
 35. ♔b6 g6 36. ♗e4 ♔e7 37. ♗c5 g5  
 38. ♗xa6 ♔e6 39. ♗c7+ ♔xe5 40. ♗xb5  
 ♗d1 41. ♔c5 ♔f5 42. ♗c3 ♗c2 43. h3  
 h5 44. ♔d4 h4 45. gxh4 gxh4 46. ♔e3  
 ♔e5 47. ♗b5 ♗f5 48. ♗d4 ♗xh3  
 49. ♗f3+ ♔d5 50. ♔d2 ♔c4 51. ♗xh4  
 Draw

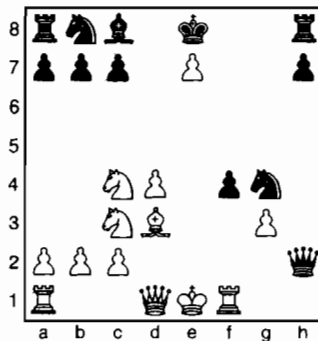
Last, but not least, I saw a fellow at the board on my immediate left trot out the Latvian Gambit, an opening seldom seen in civilized company. He got his just desserts:

*Latvian Gambit*

Sergi Alonso-Castillo (2251)  
 Eduardo Perales-Galino (2336)

*Badalona 2007*

1. e4 e5 2. ♗f3 f5 3. ♗xe5 ♗f6 4. d4 d6  
 5. ♗c4 fxe4 6. ♗c3 ♗g6 7. f3 ♗f6 8. fxe4  
 ♗e7 9. e5 ♗g4 10. ♗d3 ♗h5 11. ♖f1  
 ♗h4+ 12. g3 ♗xh2 13. ♗f4 g5 14. exd6  
 gxh4 15. dxe7



15... ♗e3 16. ♗xe3 fxe3 17. ♗e4 e2  
 18. ♗xe2 ♗h3 19. ♗h5+ ♔xe7 20. ♗f3  
 ♗d7 21. ♗f7+ ♔d8 22. ♗g7 ♖e8 23.  
 ♗xe8 ♗g4 24. ♗xg4 1-0

**Northwest Chess Business Manager to move to Oregon**

Northwest Chess (NWC) Business Manager Eric Holcomb informed his family before the holidays, and now informs the chess community, that he is planning to move to Bend, Oregon to begin a new "semi-retired" life. The move is expected to take place shortly after the final day of the Washington State Chess Championship (February 18). Eric previously worked for The Boeing Company full time from 1984 to 2002, and part time from 2003 to 2007. He started as NWC Business Manager in January 2003.

Although Eric intends to continue as NWC Business Manager, assistance will be required in a couple of areas.

*Continued on page 18*

*Move cont'd from p. 17*

The WCF and *NWC* have a post office box on Fourth Avenue South in Seattle, which is necessary, because that post office is used to mail the magazine each month. Mail received includes the monthly mailing statement, address changes, and occasionally membership dues and other correspondence. We will need a volunteer who can check that box at least twice per month, and resend all important mail to Eric monthly, preferably before the monthly mailing list is prepared. Compensation will be provided for resending the mail, as well as reasonable mileage expenses if not on your usual route.

Eric has a sizeable accumulation of magazine back issues from the past five to six years. These will be condensed into about 12 boxes. A new custodian for these back issues is desired. Ideally, the custodian should also be responsible for distribution of magazine sample copies within the Seattle-Tacoma area, including at major WCF events such as the Washington Open. Extra magazine copies are sent by Snohomish Publishing each month via UPS. Eric will request that these copies be split into two half-size boxes, with the Puget Sound area custodian receiving half of the extra copies. The new custodian should be prepared to take possession of the back issues.

If you are interested in performing these functions, please contact Eric as soon as possible at [eric@holcomb.com](mailto:eric@holcomb.com), or phone 253-850-2996.

Until Eric announces a new business address, please continue to send membership renewals and other *NWC* payments to Eric's PMB in Kent, WA. Mail forwarding will be established at the time of moving.

## Northwest Chess advertises in Verizon Yellow Pages

*Northwest Chess* (*NWC*) has an advertisement/phone number listing in the Greater Seattle & Eastside Regional Verizon Yellow Pages (just published), as well as the Eastside only pages (also just published). An ad will also appear in the South King County edition due to be published in April. All of the ads appear under the heading of "Chess Instruction," which currently has no other ads. The ads will be financed in part by a donation from *NWC* business manager Eric Holcomb, who will donate back to *NWC* the \$25 he receives each month for updating the *NWC* website. This arrangement is for 2008 only; if the ads are successful they will continue at the expense of *NWC*, otherwise they will be cancelled after this year.

Eric will receive calls to the number listed in the directory (253-850-2996), and will inform callers about *Northwest Chess* magazine, as well as provide referrals to chess coaches and chess clubs. **If you are a chess coach who wishes to be included in this referral program, please let Eric know by phone or by e-mail to [eric@holcomb.com](mailto:eric@holcomb.com).** Donations by chess coaches/clubs to help defray the cost of advertising are optional this year, but may be required to participate in the referral program if continued in 2009.



*Challengers' Cup players at the Tacoma CC*

photo by Ed McPherson

# Surprising Castling

by IM Nikolay Minev

A long, long time ago, I shared with a friend my intention to write an article about unusual castling, castling which is unexpected and comes as complete surprise to the opponent. As a response I received a skeptical smile and short remark: "You can't surprise me easily with castling and such a project is a very difficult task. But because you are mulish enough, maybe you have some chance to fulfil your wish." That friend of mine was correct. Now, about forty years later, my collection of this topic consists of only six examples. Below are presented these half a dozen castlings which, in my opinion, should be known by all players.

## Unique Double-Attack

*Ruy Lopez Steinitz Deferred*

**Feuer-O'Kelly**

*Liege 1934*

Annotations by IM Nikolay Minev

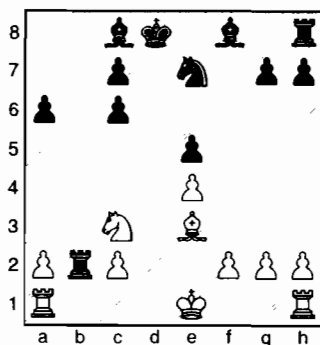
1.e4 e5 2.♘f3 ♘c6 3.♙b5 a6 4.♙a4 d6 5.♙xc6+ bxc6 6.d4 f6 7.♘c3 ♖b8 8.♙d3 ♘e7 9.♙e3 ♖xb2?

A weak continuation. Theory recommends 10...♘g6 or 10...♙e6.

10.dxe5 fxe5??

This loses. Relatively better is 11...fxe5 12.♘xe5! with advantage for White, because 12...dxe5?? leads to the position in the game.

11.♘xe5 dxe5 12.♙xd8+ ♔xd8



13.O-O-O+ 1-0

The winning pattern is truly unique, because the prey of this double-attack can only be a Rook!

## O-O-O is an Attacking Move!

*Queen's Gambit Accepted*

**Muller-Sauke**

*Villingen 1934*

Annotations by IM Nikolay Minev

1.d4 d5 2.c4 dxc4 3.♘f3 ♘f6 4.♙a4+ ♘bd7 5.♘c3 e6 6.e4 c5?

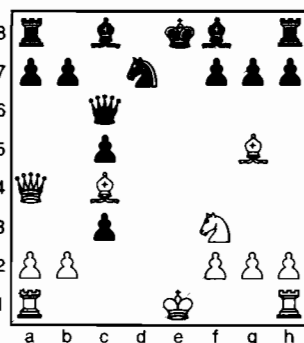
Better is 6...a6 and if 7.♙xc4, then 7...c5.

7.d5 exd5 8.e5! d4

Keres recommended 8...b5 9.♙xb5 ♖b8 10.♙a4 d4 11.exf6 dxc3 12.♙xc4 ♖b4, but after 13.♙d1! (Negyessy) White has the advantage.

9.♙xc4 dxc3 10.exf6 ♙xf6 11.♙g5 ♙c6

Perhaps Black should try 11...♙b6!?, but, after 12.bxc3 or 12.O-O!?, White maintains strong attacking chances.



12.O-O-O!! ♙xa4

Many books show the game Taimanov-Polugaevsky, USSR (ch) 1960: 12...cxb2+ 13.♔xb2 ♙e7 14. ♙he1 f6 15. ♙b5 ♙b6 16.♔c1 fxg5 17. ♙xd7+ ♔f8 18. ♙xe7 ♔xe7 19.♙e4+ ♔d8 20.♙f5+ ♔c7 21.♙e5+ ♔c6 22. ♙d6+ ♔b5 23. ♙b2+ 1-0. Poor Polugaevsky! He was unable to prove his reputation as one of the world's best defenders, simply because, after 12.O-O-O!! , White wins by force.

13. ♙he1+ ♙e7 14. ♙xe7+ ♔f8 15. ♙xf7+ ♔g8 16. ♙fd7+! ♙xc4 17. ♙d8+ ♔f7 18.♘e5+ ♔e6 19.♘xc4 1-0

## O-O Can Also Be an Attacking Move!

*French Tarrasch*

**Foigel-Monin**

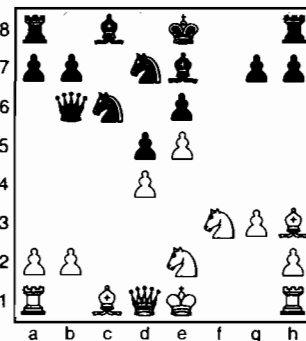
*Frunze 1977*

Annotations by IM Nikolay Minev

1.e4 e6 2.d4 d5 3.♘d2 ♘f6 4.e5 ♘fd7 5.f4 c5 6.c3 ♘c6 7.♘df3 ♙b6 8.♘e2 ♙e7

8...f6!? deserves attention.

9.g3 cxd4 10.cxd4 f6 11.♙h3 fxe5 12.fxe5



12...O-O!!

A very pretty, aggressive idea to open the center before White castles.

13.♙xe6+?

Perhaps White should try 13.♙f4!?

13...♔h8 14.♙xd5 ♘dxe5 15.dxe5 ♘xe5 16.♘fd4

Loses immediately, but already the position is hopeless.

16...♙b4+ 17.♘c3 ♙g4 18.♙d2 ♖ae8 19.♘de2 ♖f2! 0-1

**The Washington Open is coming to Redmond!**

**Prize Fund ~\$8000**

## Unexpected Castling and an Elegant Finale

*Nimzovich Defense*

**Runau-Schmidt**

*Germany 1972*

Annotations by IM Nikolay Mineev

1.e4 ♘c6 2.d4 d5 3.exd5

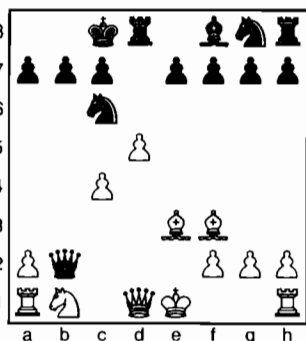
Recent theory considers 3.♘c3 (if 3...dxe4, 4.d5) as a stronger continuation. 3...♙xd5 4.♘f3 ♘g4 5.♙e2 O-O-O?!

Maybe 5...e6 is a better try.

6.c4 ♙h5 7.d5 ♙xf3?

As we shall see, this idea to win a pawn is wrong. Correct is 7...e6. In addition, 7...♘e5 8.♘xe5 ♙xe5 looks okay.

8.♙xf3 ♙e5+ 9.♙e3! ♙xb2



10.O-O!!

Who would presume that this unexpected castling introduces a fantastic tactical idea!

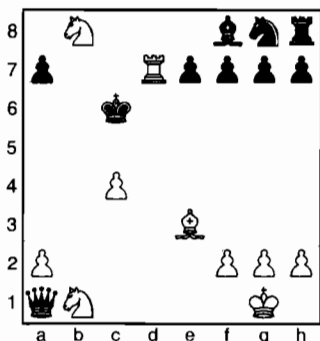
10...♙xa1

Had Black predicted what would follow, he would have preferred 10...♘e5!?

11.dxc6!! ♙xd1

After 11...bxc6 12.♙a4, White has a winning attack.

12.cxb7+ ♘b8 13.♙xd1 c6 14.♙xc6 ♘c7 15.♙d7+! ♘xc6 16.b8=♘mate!



I like this elegant finale!

## Crazy Castling

*Sicilian Defense*

**Blatny-Varejko**

*Czech Republic (ch team) 1999*

Annotations by IM Nikolay Mineev

1.♘f3 c5 2.e4 e6 3.b3 ♘c6 4.♙b2 ♘f6 5.e5 ♘d5 6.g3 f5 7.h4 g6 8.♘a3 a6 9.c4 ♘de7 10.h5 ♙g7 11.♙c3 ♘d4 12.♘c2

If 12.♘xd4 cxd4 13.♙xd4 ♘c6 and Black regains the pawn.

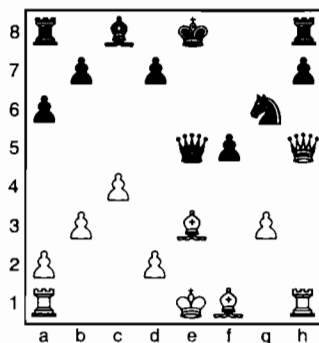
12...♙c7 13.♘fxd4 cxd4 14.♘xd4 ♙xe5 15.hxg6 ♘xg6 16.f4 ♙xd4

Only move. If 16...♙f6 17.♘xe6! or 16...♙d6 17.♘xf5! exf5 18.♙xh8 ♘xh8 19.♙xh7 ♘f7 20.♙h5 and White wins.

17.♙xd4 e5

Or 17...♙c6 18.♙h6 ♙e4+ 19.♙e3 O-O 20.♙h5 ♙f7 21.♘f2! with a winning position.

18.fxg6 ♙c6 19.♙h5 ♙e4+ 20.♙e3 ♙xe5



21.O-O-O!!

After the obvious 21.♙d1 ♙xg3+ 22.♙f2 ♙e5+ 23.♙e2, White keeps his attacking chances, but, as we shall see, this crazy-looking castling is much, much stronger.

21...♙a1+ 22.♘c2 ♙xa2+ 23.♘c3 ♙a5+ 24.♘b2 ♙e5+ 25.♘c2 d5 26.♙g2 dxc4 27.♙de1 cxb3+ 28.♘b1 ♙e6 29.♙b6! ♙d6 30.♙xf5 ♘d7 31.♙xe6! ♙xe6 32.♙d3+ ♘e8

Or 32...♙d6 33.♙h3+ ♘e7 34.♙e1+ ♘e5 35.♙f5 ♙f6 36.♙xe5+ ♘f7 37.♙d7+ and wins.

33.♙h3 ♘e5

If 33...♙xb6, then 34.♙d7+ ♘f8 35.♙f1+ ♘g8 36.♙f7mate

34.♙e4 ♙g6 35.♙f5 ♙xb6 36.♙xe5+ ♘f7 37.♙f1 ♙f6 38.♙e6+ 1-0

## My Favorite Diabolical Castling

*Caro-Kann Classical*

**Mileika-Nevitsky**

*Riga 1963*

Annotations by IM Nikolay Mineev

1.e4 c6 2.d4 d5 3.♘c3 dxe4 4.♘xe4 ♙f5 5.♘g3 ♙g6 6.♘f3 ♙c7?!

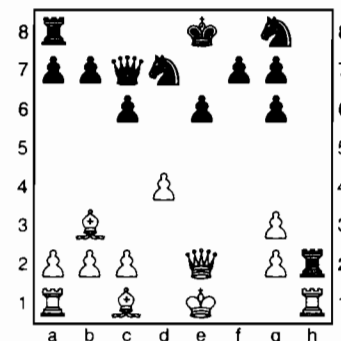
Nowadays, 6...♘d7 is considered the obligatory reply.

7.♘e5 ♘d7 8.♘xg6 hxg6 9.♙c4 e6 10.♙e2 ♙d6 11.♙b3!?

Setting a clever, and not easily recognizable, trap.

11...♙xg3?! 12.fxg3 ♙xh2

Falling into the trap!



13.O-O!! ♙h8 14.♙xf7!

After this blow, the game is practically decided.

14...O-O-O 15.♙xe6 ♘gf6 16.♙f4 ♙a5 17.♙e5! ♙xe5 18.dxe5 ♘d5 19.♙g5 ♙he8 20.♙h3 1-0

From the Business Manager:

If you would like to see bigger magazines, up to 32 pages, please submit your games and articles to the editor, and encourage your chess-playing friends to subscribe to *Northwest Chess!*

## Washington Chess Federation (WCF)/Oregon Chess Federation (OCF)

**Adult:** \$25/year (12 issues). Residents of OR and WA receive a 1-year membership in the OCF or WCF. Members receive *Northwest Chess* via periodicals mail each month.

**Junior:** \$17/year (12 issues) or \$10/6 months (6 issues). Must be under age 20 at time of expiration. OR/WA residents only; state membership included. Juniors receive *Northwest Chess* each month.

**USA Subscriber:** \$25/year (12 issues). For subscribers living inside the US mail system, but outside the OR/WA area. Subscribers receive *Northwest Chess* each month.

**Family:** \$5/year (not a subscription — membership only). This class of membership is open only to co-resident of an Adult or Junior member. Expires at the same time.

**Trial:** \$13 (membership and subscription, expires in 3 months). By paying the balance of dues for an Adult membership, this option can be extended to 12 months. The balance must be paid before the trial status is expired.

For general information, Eric Holcomb (253) 850-2996, e-mail: Eric@Holcomb.com

### OCF/WCF Membership Application/Renewal Form

**Name** \_\_\_\_\_ **If Junior, give date of birth** \_\_\_\_\_

**E-Mail** (if you want to subscribe to the *Northwest Chess* e-mail mailing list) \_\_\_\_\_

**Phone Number** (optional, will not be used for telemarketing) (\_\_\_\_\_) \_\_\_\_\_

**Street or P.O. Box** \_\_\_\_\_

**City** \_\_\_\_\_ **State** \_\_\_\_\_ **Zip** \_\_\_\_\_

**Country** (if not USA) \_\_\_\_\_ **Amount Enclosed \$** \_\_\_\_\_

Make check or money order (USA \$ only) out to Northwest Chess and mail to:

**Credit this membership to:**

**Eric Holcomb**  
NW Chess Business Manager  
PMB 342  
12932 SE Kent-Kangley Rd.  
Kent WA 98030-7940

#### WCFBoardMeeting

12/18/07

Officers present: Pres. Geoff Gale, V.P. Duane Polich, Sec. Gary Dorfner, Treas. Robert Allen, T.C. Dan Mathews, NWC Rep. absent, and S.C. David Hendricks. Guests: NWC Business Manager Eric Holcomb and Josh Sinanan

The meeting convened at 6:52 pm The minutes were read, amended & approved.

#### Officers reports:

**Financial report:** none, as the Treasurer has not had time to prepare one. Made about \$750 on the Washington Class Scholastic & about \$200 on the Class itself for a total of \$950.

Discussed the Washington Class. It was well run.

**Secretary:** Discussed the Washington Challengers' Cup. It is all set to go, 3 entries have come in so far. Gary will pay \$50 a day tournament report for a total of \$100. The time control will be 40/2 & SD/1, same as the TC used in the State Championship. The Reserve will play G/120. E-mailed the OCF president about the WA/OR match. They are all for it & will start lining up their boards.

**V.P.:** Reported on the WA/BC match. Washington won the match 6-4. It was played in Vancouver, BC. Next year, it will be played in Washington.

**T.C.:** None.

NWC Rep: No report, absent.

**S.C.:** Discussed the WA Junior Closed, WA Junior Open & the Susan Polgar tournaments. David will put together formats & budgets for these 3 events & send them to each board member. The Washington Junior Open will be held on 1/21/08.

#### Old Business:

Discussed the 2008 Washington Open. Gary to put together a tournament checklist so tournament staff will know what they have to do, what items to bring, etc. Dan to work up format & budget & send it to each officer.

Side events: Scholastic & Bug House on Saturday; Novice & Blitz on Sunday. Gary to work up formats & budgets for Novice, Blitz & Bughouse & will also direct them. WCF Membership Meeting will be held on Sun.

Discussed the 2009 Washington Open which may be held in Spokane. Gary to e-mail Kevin & David & ask them to send the board a copy of their proposed format & budget that they plan to use for it.

Discussed the State Championship & Premier.

#### New Business:

Eric presented a proposal to raise rates for NWC, appointing Nat Koons Ass't Editor & some

other changes. A motion was made by Mr. Dorfner & seconded by Mr. Polich to accept the proposal as modified, passed. It was suggested that a Scholastic Editor be appointed as well.

A motion was made by Mr. Dorfner & seconded by Mr. Polich to give \$250.00 to the Denker Tournament rep. and \$250.00 to the Polgar Tournament Rep. Passed.

The meeting adjourned at 9:22 pm.

Gary J. Dorfner, Secretary  
(Edited by Eric Holcomb)

#### From the Business Manager:

*Northwest Chess* now accepts Pay-Pal membership payments (see [www.paypal.com](http://www.paypal.com)) at [info@nwchess.com](mailto:info@nwchess.com). You can pay using a credit card, e-check, or funds already in your PayPal account. This should make it much more convenient to renew your subscription or start a new one! A PayPal Subscription/Membership Form is available on our website at [www.nwchess.com/nwcmag/MemberApp\\_PayPal.htm](http://www.nwchess.com/nwcmag/MemberApp_PayPal.htm) (or just use the link on the home page or magazine info page).

# Seattle Chess Club Tournaments

## Address

17517 15 Ave NE  
Seattle WA 98155

## Infoline

206-417-5405

www.seattlechess.org

cfkleist@cs.com

## Address for Entries

SCC Tnmt Dir  
2420 S 137 St  
Seattle WA 98168

## Mar. 2, Apr. 6

**Format:** 4-SS. **TC:** G/64. **EF:** \$17 (+\$5 fee for non-SCC). **Prizes:** 1st 35%, 2nd 27%, Bottom Half 1st 22%, 2nd 16% (\$10 from each EF goes to prize fund). **Reg:** 10:30-11:15 a.m. **Rds:** 11:30-1:50-4:10-6:30. **Misc:** USCF, WCF/OCF memb. req'd, OSA, NS, NC.

## SCC Sunday Tornado

## Mar. 15, Apr. 19

**Format:** 3-RR, 4-plyr sections by rating. **TC:** G/120. **EF:** \$7 (+\$5 fee for non-SCC). **Prizes:** Free entry for future quad. **Reg:** 9:00-9:45 a.m. **Rds:** 10:00-2:15-ASAP. **Misc:** USCF, WCF/OCF memb. req'd, OSA, NS, NC.

## SCC Saturday Quads

## April 26-27

**Format:** 4-SS. **TC:** G/125 or G/100+30 s/m. **EF:** \$27 (SCC members subtract \$5, embers of other dues-required CCs in BC, OR, and WA subtract \$2). **Prize Fund:** Based on at least eight entries. **Prizes:** 4.0-\$100, 3.5-60, 3.0-35, 2.5-18. **Reg:** 10-10:45 a.m. **Rds:** 11-3:30, 11-3:30. **Byes:** 1 (Rd 3 or 4-commit at reg.). **Misc:** USCF & WCF memb. req'd. OSA, NS, NC.

## SCC Plus-Score Swiss

## May 11

**Format:** 4-SS. Open to U1200 and unrated. **TC:** G/75. **EF:** \$11 by 5/7, \$16 at site. (\$2 disc. for SCC mem., \$1 for mem. of other dues-req'd CCs in WA, OR, & BC). **Prizes:** Memberships (SCC, WCF, USCF). **Reg:** 9-9:45a. **Rds:** 10-12:45-3:30-6. **Byes:** 1 (Rd 3 or 4-commit at reg.). **Misc:** USCF memb. req'd. NS, NC.

## SCC Novice

## Seattle Spring Open

March 28-30 or March 29-30

A two-section Swiss (4 rounds - Open, 5 rounds - Reserve) with a time control of 40/2 and SD/1 (two-day Reserve schedule - Round 1, G/64). The prize fund of \$810 is based on 40 paid entries, 5 per prize group.

*a Harman Memorial Grand Prix event*

Open		Reserve (U1900)	
First	\$160	First	\$100
Second	\$120	Second	\$75
U2100	\$90	U1700	\$60
		U1500	\$50
		U1300	\$40
		Unrated	\$15

Plus Score Pool - \$100

Entry Fees: \$33 if rec'd by 3/26 (\$24 SCC memb., \$29 memb. of other dues-required CCs in the NW), \$42 at site (\$33 SCC memb., \$38 memb. of other dues-required CCs in the NW). Unrated-Free with purchase of 1-yr USCF & 1-yr WCF. Add \$1 to any EF for 2-day schedule.

Registration: Open-Sat. 11-noon; Reserve-Fri. 7-7:45pm, Sat. 9-9:45am.

Rounds: Open-Sat. 12:30-6:45, Sun. 11-5; Reserve-Fri. 8, Sat. (10 @ G/64)-12:30-6:45, Sun. 11-5.

Byes: 1 in Open, 2 in Reserve (Sunday rounds, commit at registration).

Miscellaneous: USCF & WCF membership req'd. No smoking.

## 2008 Weekends

Novice: May 11, July 27, Nov. 9

Quads: Mar. 15, Apr. 19, May 10, June 14, July 13, Aug. 9, Sept. 13, Oct. 11, Nov. 8, Dec. 13

Tornados: Mar. 2, Apr. 6, May 4, June 1, July 13, Aug. 30, Sept. 21, Oct. 26, Nov. 22, Dec. 14

Seattle Spring Open-Mar. 28-30.

Plus Score Swiss-Apr. 26-27.

Emerald City Open-June 20-21.

Seafair Open-August 15-17.

Seattle Fall Open-Sept. 26-28.

Extravaganza-Oct. 31-Nov. 2.

# Future Events

☞ indicates a Christopher Memorial NW Grand Prix event

## ☞ Jan 24 - Feb 21 Spokane Winter Championship ☞

**Site:** Rm 121 Herak Bldg, Gonzaga Univ. **Format:** 5-rd Swiss. **TC:** G/120. **EF:** \$16. **Reg:** 6:30-7:15 pm. **Rds:** 7:15 pm Thurs. **Info:** dbgriffin@hotmail.com.

## ☞ Mar 8-9 All-Economy Northwest Open ☞

**Site:** Tacoma CC, 409 Puyallup Ave E, Rm 11, 2nd flr (DTI Soccer Bldg). **Format:** 5-SS **TC:** Rd 1-G/60, Rd 2-G/90, Rds 3-5-G/120. **EF:** \$12. **Prize fund:** None. **Reg:** 9-9:45 a.m. **Rds:** 10-1-4, 10-3 or ASAP. **Byes:** No unwanted byes; Steve Buck will be houseman. **Misc:** USCF & OCF/WCF memb. req'd. OSA. NS. NC. **Ent/Info:** Gary Dorfner, 8423 E 'B' St, Tacoma WA 98445; 253-535-2536, ggrychess@aol.com.

## ☞ March 15

## Uncle's ☞

**Site:** Uncle's Book Store, Spokane Valley Mall, Spokane WA. **Format:** 4-5 rds. **TC:** G/20 (dep. on entries). **EF:** \$11. **Prize fund:** 100% of EFs. **Reg:** 9-10 a.m. **Misc:** USCF memb. req'd. **Info:** Dave Griffin 509-9283260; dbgriffin@hotmail.com.

## ☞ March 15-16

## Portland Spring Open ☞

**Site:** Portland CC, 8205 SW 24th Ave, Portland OR 97219. **Format:** 2-sec., 5-rd. Swiss. **TC:** Rds 1-3: 40/90, SD/30; Rds 4-5: 40/2, SD/1. **EF:** \$30 if rec'd by 3/14, \$35 at site. \$10 discount for PCC members. **Prize Fund:** \$650 b/40. **Prizes:** Open: \$150-100, U2000 75. **Reserve (U1800):** \$100-75, U1600 50, U1400 50, U1200/UNR 50. **Reg:** 9-9:30 a.m. **Rds:** 10-2-ASAP, 10-ASAP. **Byes:** Two ½-pt byes avail. if requested at reg. **Misc:** OCF/WCF memb. req'd, OSA. **Entries:** See site above. **Info:** 503-246-2978, www.pdxchess.com, portlandchessclub@gmail.com

## ☞ March 20 & 27

## March Madness ☞

**Site:** Herak 121 (Spokane CC mtg site), Gonzaga Univ, Spokane WA. **Format:** 3-4 rds. **TC:** G/45 or G/60 (dep. on entries). **EF:** \$11. **Prize fund:** 100% of EFs. **Reg:** 6:45-7:15 p.m. **Rds:** Thurs. eve. **Misc:** USCF memb. req'd. **Info:** Dave Griffin 509-9283260; dbgriffin@hotmail.com.

## ☞ Mar 29, Apr 26

## PCC Game-in-60 ☞

**Site:** Portland CC, 8205 SW 24th Ave, Portland OR 97219. **Format:** 4-rd Swiss. **TC:** G/60. TD may switch to 5SS and G/45 if more than 25 entries. **EF:** \$20, \$5 discount for PCC members. No advance entries. **Prize Fund:** \$200/b20. **Prizes:** \$60-40-30, U1800 35, U1500 35. **Reg:** 9-9:30 am. **Byes:** One ½-pt. bye avail. if requested at reg. **Misc:** USCF & OCF/WCF membership req'd, OSA. **Info:** portlandchessclub@gmail.com, 503-246-2978, www.pdxchess.org.

# More Scholastic Events

## March 2008

15 Chess4Life State Qualifier (K,1-3,4-6)	www.chess4life.com	Bellevue WA
15 Spring Queen's Quest (K,1-3,4-6)	www.chess4life.com	Bellevue WA
15 Assumption Spring Tnmt (K-8)	Randy Kaech http://mysite.verizon.net	Bellingham WA
15 TOPS Scholars & Mates (K,1-3, 4-6,7-Parents)	topsches@yahoo.com	Seattle WA
15 St. Mary Magdalen (K-12)	www.chess4life.com	Everett WA
19 TCC Wed. Kids Night	Gary 253-535-2536 ggrychess@aol.com www.tacomachessclub.netfirms.com	Tacoma WA
22 Susan Polgar Qualifier	Oregon Chess Federation	Portland OR
22 WA State Elementary Team Ch	www.chess4life.com	Edmonds WA
22 Howard Christofersen (K-12)	www.chess4life.com	Anacortes WA
29 Chess4Life Championships	www.chess4life.com	Kirkland WA
29 Strawberry Hill (K-3boys,K-3girls,4-6,K-8)	Mark Cohen beyondborders@speakeasy.net 206-842-2444	Bainbridge Island WA

## April 2008

5 Bear Creek Tnmt (K, 1-3, 4-6),	www.chess4life.com	Issaquah WA
11-12 OSCF State Championship (K-12)	www.oscf.org oscf@oscf.org	Seaside OR
12 WA-BC Int'l Scholastic Chess Match	www.chess4life.com	Vancouver BC
12 Woodinville Spring (K,1-3,4-6)	www.chess4life.com	Woodinville WA
12 Shoreline Qualifier (K,1-3,4-6,7-8, 1-3U900,4-6U900)	amisamuels@comcast.net, www.chess4life.com	Shoreline WA
16 TCC Wed. Kids Night	Gary 253-535-2536 ggrychess@aol.com www.tacomachessclub.netfirms.com	Tacoma WA
26 WA Elementary Championships	Randy Kaech http://mysite.verizon.net/kaech	Redmond WA

A ♀ in front of the tournament name indicates an OSCF qualifying tournament. Boldface type indicates a tournament announcement (in our Future Events Section) or display ad in this issue.

## USCF NATIONAL Scholastics

For information on any national event, visit [www.uschess.org](http://www.uschess.org)

Mar. 8-9	<b>U.S. Junior Chess Congress</b>	<b>Anderson IN</b>
Apr. 4-6	<b>National Junior High Championship</b>	<b>Dallas TX</b>
Apr. 18-20	<b>National High School Championship</b>	<b>Atlanta GA</b>
May 9-11	<b>National Elementary Championship</b>	<b>Pittsburgh PA</b>

# Open Events

## March 2008

1	SCC-TCC Match	206-417-5405 cfkleist@cs.com 253-535-2536 ggarychess@aol.com	Tacoma WA
1	PCC Saturday Quads	503-246-2978 portlandchessclub@gmail.com www.pdxchess.org	Portland OR
<b>♣</b> 2	<b>SCC Sunday Tornado</b>	<b>SCC Infoline 206-417-5405 cfkleist@cs.com www.seattlechess.org</b>	<b>Seattle WA</b>
4	PCC Tuesday Quads begin	503-246-2978 portlandchessclub@gmail.com www.pdxchess.org	Portland OR
7,14,21,28	TCC Spring Championship	253-535-2536 ggarychess@aol.com www.tacomachessclub.netfirms.com	Tacoma WA
<b>♣</b> 8-9	<b>Northwest Open All-Economy Tnmt</b>	<b>253-535-2536 ggarychess@aol.com www.tacomachessclub.netfirms.com</b>	<b>Tacoma WA</b>
<b>♣</b> 8-9	<b>Oregon Class</b>	<b>www.oregonchess.org</b>	<b>Portland OR</b>
15	Seirawan/Suttles Tandem Simul	chess@chessmastery.com	Vancouver BC
<b>♣</b> 15	<b>SCC Saturday Quads</b>	<b>SCC Infoline 206-417-5405 cfkleist@cs.com www.seattlechess.org</b>	<b>Seattle WA</b>
<b>♣</b> 15	<b>Uncle's Tournament</b>	<b>David Griffin 509-928-3260 dbgrffn@hotmail.com</b>	<b>Spokane WA</b>
<b>♣</b> 15-16	<b>Portland Spring Open</b>	<b>503-246-2978 portlandchessclub@gmail.com www.pdxchess.org</b>	<b>Portland OR</b>
<b>♣</b> 20,27	<b>March Madness</b>	<b>David Griffin 509-928-3260 dbgrffn@hotmail.com</b>	<b>Spokane WA</b>
<b>21-23</b>	<b>Far West Open</b>	<b>www.renochess.org/fwo</b>	<b>Reno NV</b>
<b>21-24</b>	<b>Victoria Chess Festival/Grand Pacific Open</b>	<b>www.victoriachessclub.pbwiki.com</b>	<b>Victoria BC</b>
22	EasterBunny Quads	253-535-2536 ggarychess@aol.com www.tacomachessclub.netfirms.com	Tacoma WA
<b>♣</b> 28-30	<b>Seattle Spring Open</b>	<b>SCC Infoline 206-417-5405 cfkleist@cs.com www.seattlechess.org</b>	<b>Seattle WA</b>
<b>♣</b> 29	<b>♯ PCC Game-in-60</b>	<b>503-246-2978 portlandchessclub@gmail.com www.pdxchess.org</b>	<b>Portland OR</b>

## April 2008

1	PCC Tuesday Quads begin	503-246-2978 portlandchessclub@gmail.com www.pdxchess.org	Portland OR
3,10,17	Taxing Quads	David Griffin 509-928-3260 dbgrffn@hotmail.com	Spokane WA
4,11,18,25	Pierce County Championship (Rds 1-4)	253-535-2536 ggarychess@aol.com www.tacomachessclub.netfirms.com	Tacoma WA
5	PCC Saturday Quads	503-246-2978 portlandchessclub@gmail.com www.pdxchess.org	Portland OR
5-6	Montana Open	Bill McBroom 406-728-4654	Billings MT
<b>♣</b> 6	<b>SCC Sunday Tornado</b>	<b>SCC Infoline 206-417-5405 cfkleist@cs.com www.seattlechess.org</b>	<b>Seattle WA</b>
<b>♣</b> 12-13	<b>Daffodil Open</b>	<b>253-535-2536 ggarychess@aol.com www.tacomachessclub.netfirms.com</b>	<b>Tacoma WA</b>
<b>♣</b> 19	<b>SCC Saturday Quads</b>	<b>SCC Infoline 206-417-5405 cfkleist@cs.com www.seattlechess.org</b>	<b>Seattle WA</b>
<b>♣</b> 19-20	<b>Clark Harmon Memorial</b>	<b>503-246-2978 portlandchessclub@gmail.com www.pdxchess.org</b>	<b>Portland OR</b>
<b>♣</b> 26	<b>♯ PCC Game-in-60</b>	<b>503-246-2978 portlandchessclub@gmail.com www.pdxchess.org</b>	<b>Portland OR</b>
<b>♣</b> 26-27	<b>SCC Plus-Score Swiss</b>	<b>SCC Infoline 206-417-5405 cfkleist@cs.com www.seattlechess.org</b>	<b>Seattle WA</b>
<b>♣</b> 26-27	<b>Inland Empire Open</b>	<b>David Griffin 509-928-3260 dbgrffn@hotmail.com</b>	<b>Spokane WA</b>

## May 2008

2	Pierce County Championship (Rd 5)	253-535-2536 ggarychess@aol.com www.tacomachessclub.netfirms.com	Tacoma WA
3	PCC Saturday Quads	503-246-2978 portlandchessclub@gmail.com www.pdxchess.org	Portland OR
<b>♣</b> 4	<b>SCC Sunday Tornado</b>	<b>SCC Infoline 206-417-5405 cfkleist@cs.com www.seattlechess.org</b>	<b>Seattle WA</b>
6	PCC Tuesday Quads begin	503-246-2978 portlandchessclub@gmail.com www.pdxchess.org	Portland OR
<b>♣</b> 10	<b>SCC Saturday Quads</b>	<b>SCC Infoline 206-417-5405 cfkleist@cs.com www.seattlechess.org</b>	<b>Seattle WA</b>
<b>11</b>	<b>SCC Novice</b>	<b>SCC Infoline 206-417-5405 cfkleist@cs.com www.seattlechess.org</b>	<b>Seattle WA</b>
<b>♣</b> 17-18	<b>Pierce County Open</b>	<b>253-535-2536 ggarychess@aol.com www.tacomachessclub.netfirms.com</b>	<b>Tacoma WA</b>
<b>♣</b> 24-26	<b>Washington Open</b>		<b>Redmond WA</b>
<b>♣</b> 31	<b>♯ PCC Game-in-60</b>	<b>503-246-2978 portlandchessclub@gmail.com www.pdxchess.org</b>	<b>Portland OR</b>

**NOTE: A '♣' in front of the date indicates a Harmon Memorial Northwest GP event. A '♯' in front of the tournament name indicates an OSCF qualifying tournament. Boldface type indicates a tournament announcement (in our Future Events Section) or display ad in this issue.**

# Scholastic Events

## March 2008

1	Leapin` Leprechauns!	Kate Taylor 503-728-3754 kathrynrosetaylor@gmail.com http://ohscta.tripod.com	Clatskanie OR
1	WA JHS/MS Team Ch	www.whsca.org	Mercer Island WA
1	Samamish Spring St Qual. (K,1-3,4-6)	www.chess4life.com	Issaquah WA
1	YMCA Tnmt (K-3, 4-6)	360-885-9622. www.playingfortheeking.com	Vancouver WA
8	♯ Whitford/Cooper Mtn (K-3,K-6,K-12,K-12U1000)	Binh Vu bht4@comcast.net 503-642-1802	Beaverton OR
8	F.E.S.T.	Randy Kaech http://mysite.verizon.net/kaech	Ferndale WA
8	Mountlake Terrace Spring Fling (K,1-3,4-6)	www.chess4life.com	Bellevue WA
8	Chess4Life Beginners Tmt (K,1-3,4-6)	www.chess4life.com	Bellevue WA
15	♯ Meadow Park (K-3,K-6,K-12)	Zhunquin Wang zhunquin.wang@verizon.net 503-439-1431	Beaverton OR
15	♯ March Madness (K-5,6-12,K-8U500)	Jerry Ramey j-adoube@efn.org 541-272-0328	Eugene OR

**A '♯' in front of the tournament name indicates an OSCF qualifying tournament. Boldface type indicates a tournament announcement (in our Future Events Section) or display ad in this issue.**

*For more Scholastic events, see inside back cover*