



# NORTHWEST CHESS

\$2.00

JUNE 1987



**Senator Kent Pullen**

**His Determination Saved  
The Mental Sports Committee**

*(see story on page 92)*

Only THREE issues to the 1987 U.S. OPEN in Portland!

# NORTHWEST CHESS

June 1987

Volume 41 Issue 472  
ISSN Publication 0146-6941

POSTMASTER: Please send change of address to NORTHWEST CHESS,  
PO 84746, Seattle, Washington 98124-6046

SECOND CLASS POSTAGE PAID AT SEATTLE, WASHINGTON

Published monthly by the Washington Chess Federation  
Subscription mailing address: PO Box 84746, Seattle, Washington  
98124-6046. Office of record: 4715 9th Ave NE, Seattle, WA  
98105.

Copyright 1987 by NORTHWEST CHESS

## Space Advertising Rates

\$80 full page; \$40 half page \$25 quarter page, copy ready black  
and white, exact size. Editor to determine placement.

## Send Articles, etc to the Editor:

Robert A. Karch, 12414 Hwy 99, Suite 208, Everett, WA 98204

## Tournament Advertising Rates

Please refer to page 103, this issue.

## Advertising Deadline

Received by 10th of month for following month's issue  
Example: July 10 for August issue

## Annual Subscription Rates

12 monthly issues, starting with next regular mailing.

### Washington

ADULTS: \$14 total, \$1.50 is for state membership  
JUNIORS: (under age 18 at end of month of expiration);  
\$8 Total; \$1 is for state membership.

**SCHOOLS; LIBRARIES: (All States) \$12 year.**

### Oregon

ADULTS: \$15 total, \$2.50 is for state membership.  
ADULTS: \$6 year, without NORTHWEST CHESS magazine.  
JUNIORS: \$2 year, without NORTHWEST CHESS magazine.  
\$3 "Tournament membership" for Oregon is discontinued.

## Other States and Foreign

Other States: \$12 year; Foreign: \$15 year  
Surface mail only (no air mail)

## NWC Policy Board

Editor: Robert A. Karch, 12414 Hwy 99, #208, Everett, WA 98204  
Business Manager (Acting): Rusty Miller (address next line)  
Washington Rep: Rusty Miller, 4519 Calif Ave SW, Seattle 98116  
Washington Rep: Gary Dorfner, 8423 East B St, Tacoma, WA 98445  
Oregon Rep: John C. Howell, 1907 SE 34th, Portland, OR 97214  
Oregon Rep: Robert L. Barney, 4824 SE 66th, Portland, OR 97206

## Oregon Chess Federation, Inc

President:	Ralph L. Hall (Oregon City)
Vice-President:	Robert L. Barnes (Portland)
Secretary-Treasurer:	Lewis L. Richardson (Astoria)
Tournament Coordinator:	Michael P. Olson (Beavercreek)
Scholastic Coordinator:	Elmer H. Blanton (Beaverton)
Director at Large No. 1:	Harry E. Bell (Portland)
DAL 2 and USCF Delegate:	John C. Howell (Portland)

## Washington Chess Federation

President:	John A. Braley (Seattle)
Vice-President:	Vern L. Glaser (Kent)
Secretary:	Russell W. Miller (Seattle)
Treasurer:	Derrick P. Robinson (Renton)
Tournament Director:	David Bicknell (Kent)
Editor:	Robert A. Karch (Everett)
High School Director:	Olivet W. La Freniere (Seattle)
Junior High Director:	Rick Likens (Tacoma)
Elementary Director:	Jack M. McCullough (North Bend)
Senior Adult Director:	(vacant)
Puget Sound League Dir:	Gary J. Dorfner (Tacoma)
USCF Delegate:	GM Yasser Seirawan (Seattle)
USCF Delegate:	Marvin Y. Hayami (Renton)

## EDITORIAL

After the bold cover on the last issue, some of you may wonder what happened to Interzonal/World Championship bids?

With respect to the Kasparov-Karpov match, Seattle had bid "only" one million swiss francs for the prize fund, which does not take into consideration expenses for site, hospitality, travel and other expenses which would then have exceeded 3 million. Sochi (USSR) had also bid one million, and Dubai (UAE) had bid under two million. But the two bids from SPAIN: Madrid (2 million) and Seville (2.8 million) topped all others!

Still, World Champion Kasparov had indicated a preference for Seattle. If Karpov, the Challenger, had agreed, Seattle would have "won," but he wanted Dubai or Seville. This forced FIDE President Campomanes to decide, and he selected Seville (larger prize fund). So, Seattle lost the chance to host the World Championship (this time).

With respect to the Interzonal, right up until May 27th, Seattle had the inside track. The stumbling block came when Seirawan decided that he didn't want to play in the Interzonal if it were held here. Various people, including Don Schultz, the USA representative to FIDE, tried to persuade him otherwise, but it was no go. As I write this on May 28th, the true reasons behind Seirawan's reluctance are unclear. Perhaps he felt that he would be unable to play with full effort. Or perhaps he felt that having the "home court advantage" would have been unfair to the other interzonalists, such as Viktor Korchnoi, Boris Spassky, Lev Polugaevsky, etc. Yasser being an honorable man, we have to guess that it was more likely the latter.

Although the loss of this tournament is a disappointment for the USA, and particularly for the Pacific Northwest, surely other opportunities will present themselves, and one of them become a reality! However, the sponsor has made the very reasonable request that we give no more advance publicity to future events until they are solid and "locked in."

*From the Northwest and all around the USA, we surely wish Grandmaster Yasser Seirawan the greatest possible success in the upcoming Interzonal in Spain, and in the followup Candidates matches in New Brunswick, Canada next January!*

## **CHESS COMPUTER FOR SALE**

Novag Super Constellation; Officially rated at 2018 by the USCF; Very strong at speed chess; Incredible opening variety; User programmable opening book; 22,000 move pre-programmed opening book; Large 56K program will mate with K+N+B; Solves up to mate-in-12 problems; CMOS long-term memory remembers position even with power disconnected for up to 3 months; Unit only 4 months old; Includes AC Adapter

**\$160 or Best Offer!**

**Martin H. Smith (206) 542-1670 (Home)  
or 382-0600 (Work)**

## 1987 U.S. Open

Joe Bricher, Charles R. Cordell,  
Brian G. Donnell Cynthia B.  
McBride, Randy Nibler and  
Karl Schoffstoll

have sent their Advanced Entry (\$65.00) to:

Michael J. Morris, Treasurer  
1530 SW Taylor St.  
Portland OR 97205

Editor: This box is intended for regional recognition, and promotion. It is perfectly alright to send your entry either to the USCF or to Mike, and we will of course list everyone who sends his/ her entry to Mike, but I hope you understand if we don't pick up the "dozens of entries" that - even as you read this - are probably going direct to the New Windsor office!

## U.S. Open History

By Ralph L. Hall

*Craig Wilcox of Milwaukie, Oregon was clear first in Class C at the 1986 Open in Somerset, NJ with a score of 6-6. He won a large trophy and \$800.00. Craig is presently a soph-omere at Milwaukie High. He plays first board for the sch-Team Championships. He placed fourth in the 1987 State High Winning the 1986 OMSI/OSCF Upper Division finals qualified him to represent Oregon as State Champion in the Arnold Denker High School Champion of Champions tournament held during the Open. Craig was seeded 28th and finished 15th in that tournament in New Jersey.*

*In the first round of the Open, Craig surprised an expert with a nice 28 move win.*

Wilcox (1486)-Brent Schwab (2065)

1 d4 Nf6 2 Nf3 c5 3 d5 b5 4 c4 Bb7 5 Nbd2 d6 6 e4 b4 7 b3  
g6 8 Bb2 Nbd7 9 Bd3 Bg7 10 Oo Oo 11 Re1 e5 12 Nf1 Nh5 13  
Bc1 Nf4 14 Ng3 f5 15 Qc2 a5 16 Bd2 h6 17 ef Nxd3 18 Qxd3  
e4 19 Qxe4 Bxa1 20 Qe6+ Kh8 21 Rxa1 Rf6 22 Qe4 Qf8 23 fg Re8  
24 Qg4 Qg7 25 Nh5 Qxg6 26 Nxf6 Qxf6 27 Re1 Rg8 28 Qh4 1-0

## General Meeting OCF March 21-22, 1987

Minutes of previous meeting were approved. A Treasurer's report was given. Changes in OCF Bylaws made by the Board of directors was ratified. A number of small changes to the Bylaws were adopted. The new OCF dues structure was approved. (See page 90). Adult membership with NWC is now \$15 Jr \$9 Adult OCF/USCF/NWC \$37 Jr OCF/USCF/NWC \$19 Adult OCF/USCF \$28 Jr OCF/USCF \$13 Adult OCF only \$6 Associate Membership \$2. Above is short summary of the meeting. For full minutes send an SASE to: Oregon Chess Federation Secretary/Tres Lewis Richardson, 1136 14th St, Astoria OR 97103 By Russ Miller

## Minutes U.S. Open Committee Meeting May 9, 1987

1. Content and advertising in the tournament program was discussed. B. Donnell presented a preliminary dummy copy.
  2. Content for the August issue of NW CHESS was discussed. The June meeting of this Committee will include a block of time for actually working on the magazine. Members were asked to bring ideas and drafts of material they would like to include in the August issue. Several good ideas were presented.
  3. The suggestion that the program and August NW CHESS be combined was discussed, but probably is not feasible because of arrangements already made with program advisors.
  4. The Chairman reported the current status of the High School Champions tournament. \$7,000 has been donated and F. Elley is inviting eligible players. Final details will be worked out by the first of June.
  5. The Chairman will work with the Finance sub-committee to continue to seek contributions of money and things.
  6. The TD sub-committee will work with R. Hough to prepare the tournament supplies.
  7. The trophies order was discussed. A chairman is needed.
  8. The Chairman reported that G. Dullea was seeking a book/equipment concessionaire.
  9. The Chairman reported that Bob Karsh of NW CHESS will write, publish and sell the daily bulletins at the Open.
  10. The Chairman presented the final plan for side event tournaments. R. Hough has been told that C. Kelleher and L. Richardson want to direct.
  11. The Committee agreed to purchase full-page ads for the side events in the June and July issues of NW CHESS.
  12. The Promotion sub-committee was directed to advertise the Open in a Canadian and a California chess journal.
  13. The Site Management sub-committee will have a room use schedule ready to present at the next meeting.
  14. The Committee agreed that six to seven TDs would be needed.
  15. Promotion material has been and will continue to be taken or sent to selected tournaments and clubs. The Committee agreed that a massive direct mail advertising would not be cost effective.
  16. The Chairman will work with J. Howell to specify the precise need for volunteers. Those people who have been most active in planning and preparing for the Open will have first choice of volunteer jobs.
  17. The next meeting will be held on Sunday afternoon, June 7th at 1 p.m. The Chairman will find a place with enough time and room to work on the August issue of NW CHESS.
- Prepared by R. Hall, Chairman

Present: Blanton, Bush, Dale, Donnell, Hall, Karch,  
MacDonald, Poulsen, Reiner, Richardson, Whipple  
The meeting room was provided by the Portland Hilton.

## Corrections and Comments

The gentlemen giving the Seattle Chess Club jacket to GM Gufeld in the picture on page 80 of May issue of NWC is not Stan Scott but Frank J. Mauger Jr., former President of the Seattle CC.

This June issue is being put together by Editor Robert Karch and NWC Board member Russell Miller. Each did some of the typing and layout. Our thanks to the many contributors to this issue, Ralph Hall, Dick Vandenburg, Dave Collyer, Dick Phillips, Eric Kashino, Jim Perry, Dan McLeod, GM Lev Alburt Peter Dessaules, John Donaldson, and Postal Director Kristen Dietsch. Keep that material coming. By Russell Miller

# WASHINGTON CREATES MENTAL SPORTS ADVISORY COMMITTEE !

Senator Pullen tried in 1985; this time he succeeds!

Governor Gardner signed bill into law on May 19th!

The creation of an advisory committee within the office of the Superintendent of Public Instruction (SPI) to promote competition and research in mental sports such as chess, checkers, bridge, go, scholastic olympiads, and others will provide many benefits to the people of the state. Such an advisory committee will benefit the public by:

- (1) Enhancing the cognitive skills of the students
- (2) Promoting education, competition, and research in mental sports in the common schools and institutions of higher education of the state, as well as among the general public; and
- (3) Promoting tourism and economic development through the hosting of regional, national and international tournaments in mental sports.

The Legislature finds that mental sports promote intellectual development and offer the ultimate combination of art, science and sport. The Legislature also finds that while mental sports are best promoted through private sources, schools, and local units of government, the advisory committee can serve as a valuable catalyst to help achieve such promotion.

(1) Mental sports includes, chess, checkers, go, bridge, scholastic olympiads and other non-gambling games.

(2) Committee or advisory committee means the mental sports competition and research advisory committee.

(1) There is established the mental sports competition and research advisory committee within the office of the SPI. The committee consists of five persons appointed by the superintendent of public instruction. In making the appointments, the Superintendent of Public Instruction shall select one person who is primarily a chess player, one person who is primarily a bridge player, one person who has experience promoting scholastic olympiads, and one person who is primarily a go player.

(2) The members of the committee shall serve terms of four years. However in making the initial appointments, SPI may provide for staggered terms. Vacancies shall be filled by appointment for the remainder of the unexpired term.

(3) Members of the committee shall not be compensated but shall be reimbursed for travel expenses.

(4) The committee may adopt such rules as may be necessary in the administration of this chapter.

The committee shall to the maximum extent feasible rely on volunteer labor. The SPI shall provide staff support if necessary.

The committee may solicit, accept and expend such gifts, grants and endowments from public and private sources as may be made available to the committee.

(1) The committee may promote and sponsor tournaments in any mental sport. Entry fees and prize funds may be set by the committee with a view toward maximizing public participation and raising revenue for the committee and promotional activities of the committee.

(2) The committee may sponsor exhibitions, lectures and tournament participation by visiting mental sports masters.

(3) In conducting mental sports tournaments and events the committee shall consult with and seek the cooperation of local and national mental sports clubs and federations.

By 1/9/1989 the committee shall submit to the legislature and the SPI a report that includes

- (1) a Summary of the committee's achievements
- (2) Recommendations on enhancing the status of mental sports within the common schools;
- (3) Recommendations on promoting tournaments for the benefit of the general public and
- (4) Recommendation regarding possible future state financial support of the committee.

The above is the section of the legislative bill itself. Now the chess organizations, checkers groups, bridge players, go players and scholastic olympiad organizers in the state will have to make it work for the promotion of these activities in the State of Washington. If you have ideas on this please contact an officer of the Washington Chess Federation.

By Russell W. Miller

## Grant Awarded to Northwest Chess

Northwest Chess would like to thank the American Chess Foundation for the 1987 Cramer Magazine Grant. This grant is made possible by Fred Cramer who has devoted a lifetime to assisting chess in the U.S. The award was given to recognize the excellence of Northwest Chess and its contribution to the development of chess in this area.

# IDAHO CHESS

By Dick Vandenburg

The Idaho Open, our most challenging chess tournament, was played May 2-3 at Boise State University. Stewart Sutton (1919), from Caldwell, had a fine result and tied for first place with Fred Nelson (1970), of Murray, Utah, both scoring 4½-½. Nelson was also rated Class A. Two other A rated finishers placed 3rd and 4th with 4-1. They were Ernie Shown, of Mountain Home, and Jordan Henderson, of Salt Lake City. All four placed higher than several Expert ranked players - an excellent finish against tough competition. Shown and Henderson took home the Class A money of \$45 each while Sutton and Nelson received \$100 each. Joe Kennedy (2051), of Boise, was 5th, 3½-1½, losing in the last round to Nelson, a game that helped decide 1st place. Sutton won from Hans Morrow (2132), of Bountiful, Utah, in the last round to clinch his share of the title. First in Class B was Preston C. Peterson (1637), of Caldwell, who also scored 3½-1½ and, as a senior citizen, beat several younger opponents on his way to the Class B crown. Class C winner was Roger Fitch (1442), of Meridian, who scored 2½-2½. Class D champion was high school student, Phil Humpherys (1380), of Idaho Falls, recent winner of the Idaho Scholastic Championships, who scored 3-2 and placed 11th overall. Coming into the tournament rated 36th, Phil proved his game is fast improving and he has become a player to be reckoned with in Idaho chess. He lost only to Nelson and 7th place finisher Don Turner (1850), of Salem, OR. Peterson, Fitch and Humpherys each took home \$60. There were 44 entrants; directed by Dick Vandenburg and Craig Moore.

Here is Stewart Sutton's championship win over Hans Morrow in the last round. French Defense, Anderssen Var. Notes by winner.

1 P-K4 P-K3 2 P-Q4 P-Q4 3 N-QB3 N-KB3 4 PK5 KN-Q2 5 P-B4 P-QB4 6 N-KB3 N-QB3 7 B-N5 Q-N3 8 BxN This should be delayed until after castling. 8...PxB 9 N-K2 Pxp 10 N/K2xP B-R3 White's inability to castle has serious implications for his King's safety. 11 P-QN3 N-B4 12 B-N2 N-K5 13 P-QB3 P-QB4 14 N-K2 B-K2 15 Q-B2 R-QN1 16 O-O P-B5+ 17 N/B3-Q4 Pxp 18 Pxp O-O 19 R-KB3 BxN 20 QxB B-QB4 21 K-R1 Nxp This lead to a very unbalanced position. If all the pieces are exchanged, Black should win the ending. 22 BxN BxN 23 R-R6 Q-B4 24 P-QN4 QxB! 25 RxQ BxR 26 P-QN5 (RxP RxP is better for Black than the text.) 26...B-Q5 27 P-KR4 KR-QB1 28 K-R2 B-QB8 29 Q-Q2 B-N8+ 30 K-R3 QR-QB1 31 R-QR3 B-N3 32 R-QN3 R-R8+ 33 K-N4 R/8-QB8 34 P-KN3 R/8-B7 35 Q-Q3 P-KN3 36 P-KR5 K-N2 (R-KR7! is much faster and interesting. 37 Q-B1 R-KR7 38 Pxp BPxp 39 Q-K1 P-KR4+ 40 K-B3 R-B8 (R/B1-B7 mates in matter of a few moves. My nerves failed!) 41 Q-K2 RxQ 42 KxR R-B7+ 43 K-Q1 R-B5 44 K-K2 P-KR5 Splits the pawns and everything falls apart. 45 Pxp RxP 46 R-KR3 R-K5+ 47 K-Q3 RxKP 0-1

## SPOKANE CHESS CLUB

by Dave Collyer

Steve Fabian passed the President's gavel to Ben Fitch in the club's recent elections. New Vice-President is Bill Phillip and Secretary/Newsletter Editor is Dave Collyer. Dr Rod Stackelberg continues on as Treasurer and liaison representative with Gonzaga University. Completing the governing board: Steve Fabian, Lee Overaker, Ron Koch and Mark Campbell. New board members of the Spokane CC are Scott Loos, Jerry Morton and Brian Rockford. Membership is up slightly with 29 paying dues.

Fabian's term as President encompassed a wide range of activities and services, with Steve usually handling the tedious work of organizing, paperwork, etc. He directed many of our tournaments, both midweekers and the week-end events. He ably edited the newsletter, managed the mailing list, and unlocked the equipment cabinet nearly every week plus helped integrate newcomers into the club. How he managed all this and still steadily improved is beyond me. Perhaps the lessening of leadership duties can be seen in his recent drawn match against Club Champion Ben Fitch. We wish him the best.

Recent tournament results include: Daylight Donut #12 winners Bill Phillip and Vern Johnson; Daylight Donut #13 Winners Steve

Fabian and Del Gish; Kings of Chess victors Rod Stackelberg, Del Gish and Pompeo Graniglian; Yaz for Prez #1 champions Dave Collyer and Brad Thomas; Speed Tournament winners Ben Fitch and Dave Collyer.

Three scholastic events were staged in Spokane recently as an attempt to follow-up on last year's successful drive towards the National Jr High Tournament. Organizers Scott Loos, Kyle Crocker, Lee Overaker and Dave Collyer directed a total of 29 players in these events. Prize winners included Josh Swecker, Chad Decker (two trophies), Mike Schumacher, Eric Gillett and Brian Rockford.

Fourteen players took part in the Yaz for Prez Open on April 18. David Rowles topped the field with 3-0. Other prize winners: Merlian Bugtong (2½-½) Al French (2½-½) and Charles Gillingham (2-1). Steve Fabian won the Daylite Donut #14 on April 26 with 3-0. Del Gish and Bill Phillip tied for 2nd at 2-1.

A number of Grandmasters have expressed an interest in Spokane for a simul/lecture following the US Open this August. Anyone interested in their names, fees, etc may write to me. Please include a SASE. My address is N. 5921 Douglas Drive, Spokane WA 99205.

Steve Fabian vs Ben Fitch, Match Game #2 - 1 e4 e6 2 d4 d5 3 Nd2 Nf6 4 e5 Nfd7 5 c3 c5 6 Bd3 Nc6 7 Ne2 cd 8 cd f6 9 f4 Qb6 10 Nb3 Be7 11 Ng3 Bb4+ 12 Kf1 fe5 13 Qh5+ Kd8 14 Ne2 e4 15 Bc2 Nf6 16 Qg5 Qc7 17 a3 Bd6 18 Bd2 Qe7 19 Ke1 Bd7 20 Rf1 Rc8 21 h3 Kc7 22 Rc1 Kb8 23 Nc3 Nd8 24 Qg3 g5 25 a4 Rg8 26 Qh2 Nh5 27 Bd1 Nxf4 28 Bxf4 gf4 29 Nb5 Rxc1 30 Nxc1 Bb5 0-1

Ben Fitch vs Merlin Bugtong, Kings of Chess - 1 e4 c5 2 Nf3 Nc6 3 Be2 d6 4 c3 Nf6 5 d3 g6 6 O0 Bg7 7 d4 O0 8 d5 Nb8 9 Qc2 e6 10 c4 Na6 11 Nc3 Nc7 12 Rd1 ed 13 cd Nfe8 14 Bg5 f6 15 Bh4 g5 16 Bg3 f5 17 ef Bxf5 18 Bd3 Bxd3 19 Qxd3 h6 20 Ne4 Rf5 21 Qb3 b5 22 Nxc5 Nf6 23 Ne6 Qd7 24 Nfd4 Rxd5 25 Nxc7 Qxc7 26 Nf5 Qc4 27 Qxc4 bc4 28 Ne7 1-0

Del Gish vs Dave Collyer, Yaz for Prez - 1 e4 c6 2 Nf3 d5 3 ed cd 4 d4 Nf6 5 c4 e6 6 Bg5 Be7 7 Nbd2 O0 8 Be2 b6 9 Rc1 dc 10 Nxc4 Bb7 11 Nce5 Bb4+ 12 Bd2 Bxd2 13 Qxd2 Nd5 14 O0 Qf6 15 Ng4 Qe7 16 Rfe1 Nbd7 17 Nfe5 Rac8 18 Bf3 Nd7f6 19 Ne3 Nxe3 20 Rxe3 Bxf3 21 Rxf3 Qb4 22 Rfc3 Ne4 23 Rxc8 Nxd2 24 Rxf8 Qxf8 0-1

Steve Fabian vs Ben Fitch Kings of Chess notes by Fitch 1 e4 e6 2 d4 d5 3 Nd2 Nf6 4 e5 Nfd7 5 c3 c5 6 f4 Nc6 7 Ndf3 cd 8 cd h5(1) 9 Bd3 Nb6 10 Nh3 Bd7 11 O-O Be7 12 b3(2) a5 13 a3 Kf8 14 Kh1(3) g6 15 Be3 a4 16 b4 Na7(4) 17 Qe2 Nc4(5) 18 Nhg5 Rc8 19 Rfc1 Bb5 20 Nh4(7) Bxg5 21 f4(8) Ne3(7) 22 Qxe3 Rxc1 23 Rxc1 Bxd3 24 Qxd3 Qxg5 25 Qc2 Qxh4 26 Qc5+ Kg7 27 Qxa7 Rc8(8) 28 Rf1? Qf4(9) 29 Rg1 Rc1 30 Qa4(10) Qe3 31 Rd1 Qe1+ (11) 0-1

NOTES: (1) Leningrad Variation (2) Keeping Knight out of c4 (3) waste of time (4) threatens Nc4 with support of b5 (5) White can't take at c4 twice as Bb5 wins the exchange (6) If Bg6? then ...Ne5 wins piece for black (7) If Rc8, Qc8, Qc3, Qc3 wins (8) Wins! (9) if Rd1, Rc1, Qa4, Qf1 wins (10) if h3, Qe3, Rc1, Qc1, Kh2, Qa3 wins (11) if White goes for perpetual on d8-h4 diagonal Black plays Qe3 and Qf4 to hold the K-side.

Wayne Hatcher vs Ben Fitch, Yaz for Prez, notes by Fitch 1 e4 e6 2 d4 d5 3 Nc3 Bb4 4 e5 Bf8! 5 Nf3 b6 6 Bd3 Ba6 7 O-O Qd7 (also possible is 7...Ne7, and if 8 Nb5 Nf5) 8 Bf4 Ne7 9 Qe2 Bxd3 10 Qxd3 Nbc6 (or...Ng6) 11 Qa6 Nb4 12 Qe2 Nf5 13 a3 Nc6 14 Rfd1! Be7 (...h5) 15 g4 Nh4 16 Bg3?(White should play 16 Nxb4 Bxb4 17 g5, intending Qg4) 16...Nxf3 17 Qxf3 O0 18 Kg2 Na5 19 b3 c5 20 Ne2 Rac8 21 Rac1 cd 22 b4 Nc4 23 Nxd4 Bg5(possible is 23... f6) 24 Ra1 Nd2 25 Qd3 Ne4 26 f4 Rc3 27 Qe2 Be7 28 Be1 Rfc8 29 Bxc3 Nxc3 30 Qd3 Nxd1 31 Rxd1 Qc7 32 Rf1 Qc3 33 Rf3 Qb2 34 Rh3 g6 35 f5 Rc4! 36 fe6 fe6 (of course Black could play 36...Rd4 37 ef7 Kg7) 37 Ne2 Rxc2 38 Kf2 Rd2 39 Qb5 Qd4+ 40 Kf1 Rd1+ (or just 40... Qe5) 41 Kg2 Qxe5 42 Rf3 Kg7! 43 Nf4 Rd2+ 44 Kh3 Qe1! 45 g5 (45 Ng2 Qe2; or 45 Rg3 Qf2 46 Ng2 Qf6! and now 47 Rb3 g5; or 47 g5 Qf5 48 Kh4 Rd4; or finally 47 Qe8 Qg5! 48 Rc3 Qh6 49 Kg3 Bd6 50 Kf3 Qh3++) 45...Bxg5! 46 Ng2 Qe2 47 Qd7+ Kh6 48 Rg3 Qh5+ 49 Nh4 Qh4++

(Games proofread and article key-punched by Russell W. Miller.)

---

# CHIBURDANIDZE - GUFELD SIMULS

## Report by Dick Phillips

May 1, 1987 was the date of the most significant event in Seattle Chess Club history. On that date, the club was the host for a chess exhibition by the Women's World Champion of Chess, Grandmaster Maya Chiburdanidze (FIDE 2530) and Grandmaster Eduard Gufeld (FIDE 2475) of the Soviet Union.

The event took place in the ballroom of the downtown Seattle Sheraton Hotel. After welcoming ceremony in which both grandmasters were presented with official Seattle Chess Club hats and jackets, GM Gufeld gave an insightful and humorous lecture on chess as art. However, using a superb example of attack and counterattack in a Saemisch variation of the King's Indian Defense, he also demonstrated a deep understanding of the game that was appreciated by his attentive audience, an estimated 140 persons!

The lecture was followed by a dual simultaneous chess match. GM Chiburdanidze played ten boards made up primarily of Seattle Chess Club members while GM Gufeld took on anyone else who wanted to play, ending up with more than thirty boards. GM Chiburdanidze won the respect of the author instantly by opening with P-K4 on all boards. She went on to allow only a single draw, that being with Seattle's Jim McCormick, many-time State Champion and still dangerous opponent. By the end of the match she had established herself not only as a formidable opponent but also as a gracious and sensitive ambassador of her country. More than one player admitted that his faulty defense resulted partly from being smitten by dark eyes and a ready smile.

GM Gufeld completed his herculean task just before midnight, allowing only one win and several draws among his many opponents. He, too, won both the admiration and respect of his opponents as he sprinted from board to board while signing autographs and stopping talk to each player about his game.

Both GM's signed score sheets that are sure to become prized possessions regardless of the game results. They endured the flash of innumerable cameras and interruptions and yet retained that grace found in true champions. The Seattle Chess Club thanks both World Champion Chiburdanidze and Grandmaster Gufeld for their appearances and wishes both the greatest success in their careers.

Incidentally, if you played in the match, it is likely that you had your picture taken with the GM you were playing. If you would like to get a copy of one or more of the photos, contact Dick Phillips (524-7465) for more information.

On other fronts, new officers have been elected for the 1987-88 year:

Stan Scott:	President	522-0694.
Jerome Buroker:	Vice President/TD	783-5145.
Bruce Morris:	Treasurer	542-9118.
Dick Phillips:	Secretary	524-7465.

Stan had the distinction of achieving a first in Seattle Chess Club history by becoming President of the Club and losing to the Women's World Champion on the same day.

Another important item: the Seattle Chess Club must move from it's current location at the end of July. We are not moving by choice and have no control over the situation. We'd like to find a warm, dry, well-lit space of not less than 1000 square feet somewhere in the U. District, Green Lake, Wallingford, or Lake City neighborhoods. If you think you might know of such a site, let one of the persons above know about it.

Chess is played at the club every Friday night beginning at 8:00 PM with new tournaments starting four or five weeks. At this time, the club is enjoying another series of lectures on the end game by IM Dr. Nikolay Minev. Check the NWC calendar for the dates of these lectures which begin at 7:00 PM sharp.

As a participant in the simultaneous match against World Champion Chiburdanidze on May (last night), the author has a serious problem. Should the chess set I used, which was last touched by the World Champion, be used again? I have this weird feeling that I should put it in a glass case and buy a new set to use to play against mere mortals.



# 1987 WASHINGTON OPEN

May 23-24-25 at WWU in Bellingham, Washington

## OPEN

	Rate	-1-	-2-	-3-	-4-	-5-	-6-	Score	Prize
1 IM John Donaldson	2511	W22	D14	W38	W6	D4	D5	4.5	\$125 =2nd
2 Nigel Fullbrook	2459	D23	W43	D14	W20	W8	W4	5.0	\$460 1st
3 IM Nikolay Minev	2451	D25	W23	W18	D8	D12	D14	4.0	
4 FM Ionut Buzbuchi	2425	W26	W13	W11	W5	D1	L2	4.5	\$125 =2nd
5 H. Tom O'Donnell	2409	W29	W16	W10	L4	W13	D1	4.5	\$125 =2nd
6 Gary Basanta	2262	D24	W37	W39	L1	W25	L12	3.5	
7 Thomas D. Braunlich	2255	W27	L20	D25	W39	D18	W21	4.0	
8 John A. Braley	2249	W28	W17	W20	D3	L2	W11	4.5	\$125 =2nd
9 Ralph E. Dubisch	2206	W30	L38	W27	L25	W34	W44	4.0	
10 William D. Lapham	2181	W31	W34	L5	L14	D28	L40	2.5	
11 Paul Burke	2162	W32	W42	L4	W38	D14	L8	3.5	
12 Paul S. Eggers	2152	L34	W31	W44	W26	D3	W6	4.5	\$165 1st U-2200
13 Brian V. Douthwaite	2146	W33	L4	W35	W43	L5	L25	3.0	
14 Bill H. McGearry	2143	W36	D1	D2	W10	D11	D3	4.0	\$27.50 =2nd U-2200
15 David G. Rupel	2131	D39	L25	W24	L18	WD	--	1.5	
16 Gerhard Neufahrt	2130	W40	L5	L26	L37	WD	--	1.0	
17 Gerry Van Deene	2121	W35	L8	W42	D34	WD	--	2.5	
18 Derek Edwards	2089	D37	W24	L5	W15	D7	W33	4.0	\$27.50 =2nd U-2200
19 Tim Kauppila	2057	L38	L39	WD	--	--	--	0.0	
20 Mau-Seng Lee	2049	W41	W7	L8	L2	L33	L39	2.0	
21 Marvin Y. Hayami	2043	L42	D32	D29	W27	W35	L7	3.0	
22 Benjamin Fitch	2012	L1	W40	L34	W41	D26	D28	3.0	
23 Gary B. Edwards	1986	D2	L3	D37	L35	L29	W30	2.0	
24 Steve E. Merwin	1986	D6	L18	L15	L40	W31	L36	1.5	
25 Kevin Casey	1975	D3	W15	D7	W9	L6	W13	4.0	\$110 =1st U-2000
26 Henry Chiu	1966	L4	W33	W16	L12	D22	D34	3.0	
27 Duane J. Polich	1965	L7	W36	L9	L21	WD	--	1.0	
28 John A. Myer	1952	L8	L35	W41	W32	D10	D22	3.0	
29 Jose Lam	1887	L5	D41	D21	L44	W23	L38	2.0	
30 William R. Johnson	1854	L9	L44	D31	L36	L32	L23	0.5	
31 Jerry D. Watson	1850	L10	L12	D30	L33	L24	FPB	1.5	
32 Dan B. McLeod	1834	L11	D21	L43	L28	W30	WD	1.5	
33 Daniel A. Bailey	1832	L13	L26	W36	W31	W20	L18	3.0	
34 Tony W. Kiesow	1832	W12	L10	W22	D17	L9	D26	3.0	
35 Jerome Buroker	1824	L17	W28	L13	W23	L21	L42	2.0	
36 Ralph Eschbach	1822	L14	L27	L33	W30	L42	W24	2.0	
37 Paul Coxie	1818	D18	L6	D23	W16	L39	WD	2.0	
38 Jeff M. Lowery	1811	W19	W9	L1	L11	L40	W29	3.0	
39 Arthur P. Iodice	1807	D15	W19	L6	L7	W37	W20	3.5	
40 Dragan Jagnjic	1806	L16	L22	FPB	W24	W38	W10	4.0	\$110 =1st U-2000
41 Chris E. Fletcher	1756	L20	D29	L28	L22	FPB	L43	1.5	
42 David Roper	1750	W21	L11	L17	--	W36	W35	3.5	
43 Stephen M. Fabian	1723	FPB	L2	W32	L13	L44	W41	3.0	
44 Hannlegr G. Pitre	1994	--	W30	L12	W29	W43	L9	3.0	

## RESERVE

1 Chester C. West	1788	D16	W12	L20	W18	W10	L6	4.5	
2 Donald W. Davis	1775	W17	W9	W8	L11	WD	--	3.0	
3 Lance M. Fairley	1759	W18	L10	L5	W22	D16	W28	3.5	
4 August T. Piper	1746	W19	L11	W17	W12	W8	L20	4.0	
5 Jeremy Crowhurst	1727	D20	W16	W3	D10	W9	W11	5.0	\$201.66 =1st, TB 14.5
6 Mark T. Turner	1702	W21	W29	L11	W15	WF	W1	5.0	\$201.66 =1st, TB 13.5
7 James L. McAleer	1653	W22	W28	D10	L20	L12	W1	3.5	
8 Mika L. Mitchell	1651	W23	W30	L2	W14	L4	W12	4.0	\$27.50 =2nd U-1700
9 Philip A. Kelsey	1618	W24	L2	W18	W29	L5	WD	3.0	
10 Timothy Eichhorn	1615	W25	W3	D7	D5	L1	L13	3.0	
11 David J. Johansen	1608	W26	W4	W6	W2	D20	L5	4.5	\$165 + Trophy, 1st U-1700
12 John W. Riddle	1591	W27	L1	W19	L4	W7	L8	3.0	
13 Michael Rompogren	1574	L28	W22	L29	W26	W17	W10	4.0	\$27.50, =2nd U-1700
14 John B. Dumatol	1562	L29	W21	W30	L8	L28	W22	3.0	
15 John A. Scheving	1559	L30	W23	W28	L6	D21	W32	3.5	
16 Stephen Christopher	1549	D1	L5	W26	HPB	D3	D23	3.0	
17 Warren W. Gehring	1502	L2	W24	L4	WF	L13	L29	2.0	
18 John F. Enk	1400	L3	WF	L9	L1	L22	FPB	2.0	
19 Brendon Gehring	1397	L4	W27	L12	L28	W26	W30	3.0	\$27.50, =2nd U-1500
20 Mike Pendergast	1393	D5	W31	W1	W7	D11	W4	5.0	\$201.66 + T, =1st TB 16.5
21 John D. Mead	1390	L6	L14	W31	W30	D15	L7	2.5	
22 Robert R. Kimmel	1375	L7	L13	W24	L3	W18	L14	2.0	
23 Albert French Jr	1373	L8	L15	D7	WF	W24	D16	3.0	\$27.50, =2nd U-1500
24 A. Martin Grasdall	1340	L9	L17	L22	L32	FPB	L31	1.0	
25 Nick Vandervis	1265	L10	LF	--	--	--	--	0.0	
26 Walter E. Rogers	1051	L11	FPB	L16	L13	L19	L27	1.0	
27 Douglas Allen Block	None	L12	L19	D23	W31	L32	W26	2.5	
28 Dale Dial	None	W13	L7	L15	W19	W14	L3	3.0	\$110 + Trophy=1st U-1300
29 Robert G. Lucas	None	W14	L6	W13	L9	L23	W17	3.0	\$110, =1st U-1300
30 Curtis Padgett	None	W15	L8	L14	L21	W31	L19	2.0	
31 Tyrone Jones	1452	HPB	L20	L21	L27	L30	W24	1.5	
32 Joseph Frazier	None	--	--	HPB	W24	W27	L15	2.5	

## EUROPE ECHECS is Best Bet

If you ever considered subscribing to a foreign chess periodical I recommend the French publication Europe Echecs as "best bet". Under the guidance of Chief Editor Raoul Betolo, it provides a competent blend of articles, interviews and instruction. Let me dissect the December 1986 issue for you and see if you don't agree.

It is a slick publication, 8x11 in size with a full color picture of the new French Champion, Gilles Miralles, gracing the Dec cover. There are 68 pages in this issue only about 10 pages given over to advertisements. The editors divide the contents into two major sections: the first is labeled "Magazine" and the second "Technique De La Partie". (And you thought French was hard!) Let's look at each of the sections on turn.

The "Magazine" portion begins with eight tactical exercises with the answers provided in the back of the publication. This is followed by a 9th exercise which is part of an ongoing contest; the answer is given in a later issue. The intriguing idea in this section is that each of the 8 includes a time element (see below) and there are double the points awarded if you use only the diagram to solve an exercise.

Next we find two short interviews of Gary Kasparov; one is taken from the magazine Paris Match and the other is conducted by Kasparov's buddy Andras Adorjan. These are followed by an interview of Gilles Miralles who at 20 appears to have a good future ahead of him. Other articles include a synopsis of the Automaton Chess Player of the last century; a report on computer chess; a review of chess events around the world; and a summary of the responses by subscribers in what appears to be four postal games conducted between the magazine and the readership. Something similar has been tried in the Soviet Union and met with a good response. There is also a section devoted to Chess Stamps.

The "Technique" section includes analysis of 4 games from the Women's World Championship; 7 games from Sokolov vs Yussopov match; and 3 games of Miralles'. There is a report on Beliavski's triumph at Tilburg with 5 games analyzed by IM Fayard. Theoretical articles by Adorjan and Horvath on the Sveshnikov Sicilian, and by Albut on the Benko Gambit are followed by sections on correspondence chess and problems. Finally, there is an page section titled "Le nouveau petit cahier" which includes a tactical lesson by Soviet GM Gufeld, and exercises in promotion and perpetual check.

Europe Echecs may be ordered for 1 year (12 issues) - \$45 surface mail or \$64 air mail at the following address: 4 C-1, rue Xavier Marmier, 25000 BESANCON, FRANCE

By Dave Collyer

## U.S. OPEN DAILY BULLETINS!

Average 50 games per day

**\$1.50 daily; or**

**\$12.00 at U.S. Open registration:**

You can pick up the previous round at 10 am next day and Final Round 12 will be mailed to your home address, or:

**Send \$12 by mail & include 12 stamped, self-addressed #10 envelopes (22¢):**

Each round will be mailed to you DAILY (USA, Canada and Mexico only) or send:

**\$15.00 (anytime): full set 12 bulletins mailed to you at end of tournament.**

**Order from: Robert A. Karch  
12414 Hwy 99, Suite 208  
Everett, WA 98204**

## Blaine Memorial III

Chess tradition is growing in South Seattle and at the Blaine Memorial United Methodist Church. It is a slow process of nurturing chess interest within the church membership and letting the tournament chess players know that chess exists in South Seattle.

We held our third tournament at Blaine Memorial on May 16. The turnout was light, but the players were very highly rated, and all were excellent sportsmen. I hope they all come to our next tournament on August 29.

Glenn Umipeg won the tournament 3-0. He scored hard-fought wins over Stephen Christopher (1555) and Ben Delson (1702). Glenn's (1810) tournament victory could be considered as a slight upset since there were two 1900 player at the event. Glenn's name now goes on the certificate which has the names of all the past winners of the Blaine Memorial Tournaments. Norman Abrahamson is the highest rated player (1900) to take part so far. Norman is a member of the Seattle CC and took second with 2½-½. Dennis Ambler (1907) finished 3rd. I believe that Dennis could have won the tournament, but he had to skip the 3rd round.

The best game was a draw that took place between Dennis and Norman. I can't give away Dennis' opening strategy, but he used an opening where he has an 80% win ratio. I would call it an unusual "flank" opening. Anyway Dennis was moving very rapidly (maybe a minute per move). Delson commented that Dennis' rapid play was an indication of his overall chess ability. Norman played slowly which is the smart play when facing an unusual opening. Norman's defensive play was very impressive in the middle and end game.

Ben Delson was a tough competitor. He had a good first round win and fought hard in every game. I appreciated Ben's comments to be after the tournament. His insights on tournament play and on the organizational aspects of setting up a tournament well help me a lot in the future.

Stephen Christopher showed good fighting spirit in all of his games and good sportsmanship, too. I must thank him for playing in all three events. His presence at our tournaments gave them a special feeling.

Scott Kimbel has only been playing chess for 3 months. I think he played very well considering this fact. I am sorry I could not match him against some easier opponents. I loved his attitude because he thought of each game as challenge. I hope he continues to enjoy chess.

I wish to thank Reverend Bob Hoshibata for all his support. He helped in all the technical aspects of the tournament.

By Eric M. Kashino TD

## 1987 Washington State Junior High Team Championship

1. Mann Tacoma	W6	W11	W2	W3	4-0
2. St James -Kent	W8	W4	L1	W9	3-1
3. Sedgwick -Pt Orchard	Bye	W5	W9	L1	3-1
4. Woodbrook-Tacoma	W7	L2	W12	W5	3-1
5. Sequoia-Kent	W10	L3	W7	L4	2-2
6. Bethell-Stanaway	L1	L10	Bye	W12	2-2
7. Gray-Tacoma	L4	W8	L5	W11	2-2
8. Snoqualmie	L2	L7	W13	W10	2-2
9. Yakima	W12	W13	L3	L2	2-2
10. H.Christen-Bothell	L5	W6	W11	L8	2-2
11. Lakeside-Seattle	W13	L1	L10	L7	1-3
12. Curtis-Tacoma	L9	Bye	L4	L6	1-3
12. Summit-Seattle	L11	L9	L8	Bye	1-3

Trophies were awarded to the top six teams. In addition to team awards, medals were awarded for each individual who completed the tournament without a loss.

Those winners were: Herman Rutiaga (Mann) Roy Wall (Mann) Kirk Steinocher (St.James), Clay White (St.James), Terry Hackworth (Woodbrook), Josef Walker (Bethel), Jamie Durham (Gray) Floyd Cleoffe(Sedgwick).

One point of some interest. Of the 120 games played in the Championship section of this tournament, White won 58, Black won 56 and only 6 draws (5% draw ratio with the final score of 61-59).

The Championship section was USCF rated and I would like to thank Frank Elley, the scholastic coordinator for the USCF for supplying the event with a large amount of promotional materials, including sample issues of CHESS LIFE and lapel buttons, both of which were much appreciated by the players. Material related to WCF including NORTHWEST CHESS magazines were also distributed.

The host for the event was Randy Nading and Heritage Christian School in Bothell. REPORT by Jim Perry TD

## AURORA CHESS CONGRESS

APRIL 4-5

(see crosstable last issue page 77)

Fifty players took part in three sections. This was the first tournament for four players.

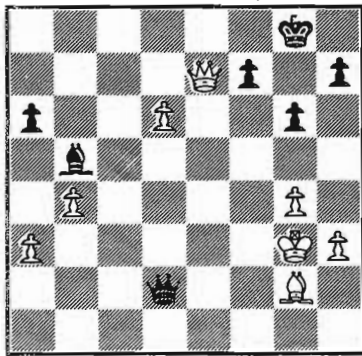
Russell Ridderbusch won \$150.00 for his 3.5-.5 score in the top section. Hugh Tobin and Harold Miklander won \$77.50 each. David Roper for his win of the Premier Section took home \$120.00 with a 4.5-.5 score. The 3.5 scorers Robert Karch, Mike Reed, Dennis Ambler and Jerome Buroker won \$12.50 each. Kevin O'Brien for his 3-1 score won the best under 1750 price of \$80.00 and used some the winnings to buy a trophy from those on display at the tournament. In the Amateur Section No 1 & 2 rated Darin Sprayberry and Frank Oslick defended their ratings well to score 4.5-.5 winning \$85.00 each for their 1st place tie. The under 1450 price of \$75.00 was split by Tyrone Jones and Calvin Creger.

This was the first in a series of events to be held in the Seattle Skating Club bingo hall with lots of room for lots of players. The next event is the annual Seattle Seafair Open July 25-26. The event was organized by Robert Karch and Russell Miller with the latter the tournament director.

By Russell Miller



## ITS NOT OVER UNTIL ITS OVER



Dieckhoff-Dan McLeod.

The above position was from Round 3 of Roseburg Chess Club II tournament held on March 7-8 1987 which was ably directed by Gerald E. Barker.

After being outplayed in the opening and middle game by White, Black has a difficult game. With proper play White no doubt has a win. But with the time limit at 40 moves in an hour, plus the sudden death on 1/2 hour concept in operation, unusual things can happen.

Black checks at d3 and thinks of that old nursery rhyme "Come into my parlour says the spider to the fly"

1...Qd3+ 2 Kh4

He does! Better Kh2 and goto plan "B"

2....h6 Black threatens mate.

3 Qf6

Best is 3 Qe4 but after you have struggled to win a pawn one hates to give it up so easily. White's move does hold the QP and stops the mate after 3...g5+. If 3 Be4 Black mates in two.

3....Qe3!

The big boys would call this a quiet move. The poet might allude to the distant roll of thunder on a clear day! I just thinks its neat.

4 g5 hg5+ 5 Qg5 Qf2+

If 5 Kg4 Bd7+.

6 Qg3 g5+ 7 Kg4 Bd7+ 0-1.

Even a blind pig finds an acorn once in a while.

SUBMITTED by Dan B. McLeod.

The following is a postal game recently completed versus GM and many times US Champion Sammy Reshevsky.  
Reshevsky-David Collyer

1 e4 e5 2 Nf3 f5 3 Nxe5 Qf6 4 d4 d6 5 Nc4 fe4 6 Nc3 Qg6 7 Ne3 Nf6 8 f3 ef3 9 Qxf3 Nc6 10 Bd3 Qf7 11 Ne2 d5 12 c3 Bd6 13 00 00 14 Nf4 Ne7 15 Bd2 Ne4 16 Qxe4 de4 17 Bc4 Bd7 18 Bxf7 Rxf7 19 Ne2 Raf8 20 Rxf7 Rxf7 21 Rf1 Rxf1 22 Kxf1 Be6 23 c4 c6 24 h3 Bf7 25 Be1 b5 26 b3 a6 27 Nc3 Bf4 28 Ncd1 Kf8 29 Ke2 Ke8 30 g3 Bd6 31 Nc3 Bg6 32 g4 Kd7 33 Ng2 bc4 34 bc4 Bf7 35 Ne3 Bf4 36 Na4 Bd6 37 Nc5 Bxc5 38 dc5 Ng6 39 Bg3 Nf8 40 Kd2 Ne6 41 Kc3 Nxc5 42 Kd4 Ne6+ 43 Ke5 Nc5 44 h4 Na4 45 a3 Nb6 46 Kd4 Be6 47 Be1 Nc8 48 h5 Nd6 49 Bg3 Nf7 50 Kxe4 g6 51 hg6 1/2-1/2.

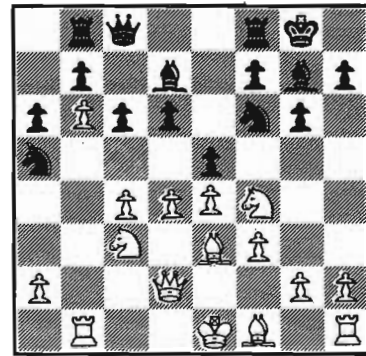
Submitted by David Collyer.

## Grandmaster Analysis

Gulko - Kupreichik, Riga 1985

(How to win a winning position without taking chances)

By GM Lev Alburt



In the diagram position, White seems to have a big edge because of the cut-off position of the Black Knight on a5. But White must be careful not to allow Black to launch a wild attack, using his (Black's) advantage in development.

Question. How can White achieve an advantage (small hint-positional advantage) while denying Black any real counterplay?  
Answer 1.de5!

Tempting was 1 Nd1!? ef4 2 Bf4 Re8 3 Nf2 (after 3 Qa5 Black could get a strong attack by sacrificing his Knight: 3...Ne4) ...d5 4 Bb8 de4 5. Be5 ef3 and Black has a very strong attack e.g. 6 Qa5 Ng4 or 6 gf3 Bf5 7 Rc1 Nd7.

Psychological element also played an important part in Gulko's decision not to grab material but rather to strive for positional advantage. Gulko's opponent, Grandmaster Victor Kupreichik from Soviet-occupied Minsk (Belorussia) is an outstanding attacking player, famous for his "wild" sacrifices; he is not that good, however, in defending inferior "boring" positions.

1... de5 2 Ng6!

Keeping locked central file (e) and the a1-h8 diagonal. Not so good was 2 Nd1 ef4 3 Bf4 Re8 4 Nf2 (4 Qa5 Ne4! with a strong attack) Nc4 5 Bc4 Ra8 -- with approximate equality.

2....hg6 3 Na4

Knight is here much better posted than on d1; it is ready for instance to go to c5)

3....Nc4 4 Bc4 Be6 5 Qc2

White is finishing his development. Because of his superiority on both sides of the board, White has a substantial advantage.

5....Rd8 6 00 Bc4 7 Qc4 Ne8 8 Qb3

Another prophylactical move. White is preparing for 8...Nd6.

8....Nd6 9 Bg5!

and the Black Rook must leave the d-file. If White played Bg5 on the 8th move, Black could have replied 8...Bf6.

9....Re8 10 Rbd1 Nb5 11 Nc5 Nd4 12 Qc4

White's main threat here is f3-f4. Black decided to sacrifice a pawn in order to activate his pieces.

12....Bf8 13 Be3 Rd8 14 Bd4 ed4 15 Rxd4 Rxd4 16 Qxd4 Bc5 17 Qc5 and Black eventually lost the game.

*"The only exercise I take is playing chess in front of an open window."*

From PALM BEACH by Pat Booth

Charles T. Wood (1468) David Bicknell (1779) Colle 1 d4 d5 2 Nf3 Nf6 3 e3 e6 4 Bd3 c5 5 c3 c4 Bc2 Bd7 7 Ne5-Nc6 8 f4 Nxe5 9 fe5 Ne4 10 00 f5 11 ef6 Nxf6 12 Nd2 Qc7 13 e4 000 14 e5 Ng8 15 Nf3 Be7 16 Bg5 h6 17 Be3 Rf8 18 Bg6 Be8 19 Nh4 Rxf1+ 20 Qxf1 Bxh4 21 Qf8 Qe7 22 Rf1 Kd7 23 Bxe8+ Kd8 24 Bg6+ Qxf8 25 Rxf8+ Ke7 26 Rf7+ Kd8 27 Rxb7 Ne7 28 Bf7 Kc8 29 Rxa7 Kb8 30 Rd7 Nf5 31 Bd2 Rf8 32 Bxe6 Nxd4 33 cd4 Bf2+ 34 Kf1 Bxd4+ 35 Ke1 Re8 36 Bxd5 Bxe5 37 Bxc4 Bxh2+ 38 Kd1 Be5 39 Bc3 Kc8 40 Bxe5 Rxe5 41 Rgx7 1-0.

Northwest Jr. Open John Graves - (1721) Kirk Steinocher (1791) 1 d4 d5 2 c4 e6 3 Nc3 Nf6 4 Bg5 Nbd7 5 Nf3 c6 6 e3 Be7 7 Bd3 b6 8 00 Bb7 9 Rc1 h6 10 Bh4 00 11 Qe2 c5 12 cd5 Nxd5 13 Bg3 cd4 14 ed4 Nb4 15 Bb1 Nf6 16 Ne5 Nd7 17 a3 Nxe5 18 de5 Ba6 19 Qe4 g6 20 Rfd1 Nd5 21 Nxd5 ed5 22 Rxd5 Qe8 23 Rd2 Qb5 24 Ba2 Rac8 25 Qxg6+ Kh8 26 Qxh6+ Kg8 27 Rcd1 Rcd8 28 Bb1 f5 29 ef6 Rxf6 30 Rxd8+ Bxd8 31 Qh7+ 1-0.

1986 Oregon Open John Donaldson - Richard Wood Rd 3

**1 d4 f5 2 g3 Nf6 3 Bg2 e6 4 Nf3 Be7 c4 00 6 00 d6**

A favorite of Richard and Bill Lapham. The Iljin-Genevsky variation after the Russian Master who invented it which offers more flexibility than the Stonewall, 6...d5

**7 b3 a5 8 Nc3 Na6 9 Bb2 c6 10 e3 Nc7 11 Na4?**

Played like a real troglodyte. The idea was 11...b5 12 Nb6 Rb8 13 Nxc8 Qxc8 14 cb5 cb5 15 Rc1 Qd7 16 d5!? Ncxd5 17 Nd4 18 Nxf5 and 18 Nc6. Unfortunately Richard's next move makes the Knight look very silly. Correct was 11 Qe2 followed by 12 e4.

**11...Nd7 12 Qc2 b5 13 Nc3 Ba6 14 Ne2 a4**

Black has fully equalized.

**15 Rfd1 bxc4 16 bc4 d5 17 c5 Bb5**

Threatening ...a3 and ...Ba4.

**18 Bc3 Qe8 19 Bb4 Qh5?**

With 19 ...g5 Black would have very good play. Now White is given the chance to solidify his Kingside and turn his attention to Black's weaknesses on the Queen's wing.

**20 Nf4 Qh6 21 h4 Nf6 22 Ne5 Ne4 23 Bf1 g5?**

This only opens the h-file for White.

**24 hg5 Bxg5 25 Bxb5 Nxb5 26 Kg2**

The c-pawn can wait.

**26...Bxf4 27 ef4 Ra6 28 Rh1?**

Too direct. Correct was 29 Qd3 then 30 Nxc6. The idea would be to play 30 a3 after 29 Qd3 Rb8. This would shut off all Black's play.

**28...Qg7 29 Qd3 a3!**

The only practical chance though not enough to change the outcome.

**30 Rh4 Ra4 31 Qb3 Ra7 32 Ra1 Rc8 33 Qd3 Ra4**

Overlooking White's threat. Necessary was 33...Rb7 though White would have a big edge after 34 Ba5 then 35 Bb6.

**34 Rxh7! Qxh7 35 Rxh7 Kxh7 36 Qd1**

The point of White's play. The Black King is just too exposed.

**36...Ra7 37 Qh5+ Kg8 38 Qg6+ 1-0**

All of Black's pawns are falling

NOTES by Donaldson.

West Seattle Octagonal Chris Schmeekle - Jeff Byerly Rd 2 ENGLISH 1 c4 Nf6 2 Nc3 g6 3 g3 Bg7 4 Bg2 00 Nf3 d6 6 00 e5 7 Ne1 c6 8 d3 Be6 9 Rb1 Qd7 10 b4 Bh3 11 a4 Bxg2 12 Kxg2 Nh5 13 e4 Na6 14 Be3 Nc7 15 Nc2 d5 16 Bc5 Rfd8 17 b5 Ne6 18 Bb4 dc4 19 dc4 Nef4+ 20 Kh1 Qh3 21 Qf3 Rd3 22 Ne3 c5 23 Bxc5 Rxc3 24 Rbd1 Rb3 0-1

1987 Aurora Congress Robert A. Karch - Jerome Buroker 1 Nf3 Nf6 2 d4 g6 3 c4 Bg7 4 Nc3 00 5 e4 d6 6 Be2 Nbd7 7 00 e5 8 d5 Nh5 9 Re1 Nf4 10 Bf1 f5 11 g3 Nh5 12 ef5 gf5 13 Nxe5 Ndf6 14 Nd3 Ng4 15 Nf4 Nhf6 16 h3 Ne5 17 Ne6 Bxe6 18 de6 c6 19 f4 Ng6 20 Qd3 Ne7 21 Be3 Qc7 22 Bg2 Rad8 23 Rac1 Kh8 24 Bf3 h5 25 Qe2 h4 26 g4 fg4 27 hg4 Ng6 28 Qf2 h3 29 f5 Kg8 30 fg6 Nxc4 31 Qh4 Rxf3 32 e7 h2+ 33 Kh1 Nf6 34 ed8/Q+ Qxd8 35 Bg5 Qb6 36 Bxf6 1-0.

Kirk Steinocher (1781) Marvin Hayami (1994) English 1 c4 e5 2 Nc3 Nf6 3 Nf3 Nc6 4 g3 h6 5 d3 Be7 6 Bg2 00 7 00 d6 8 a3 a5 9 Rb1 Nh7 10 b4 f5 11 b5 Nb8 12 Nd5 Nd7 13 Nxe7+ Qxe7 14 Nh4 Qe8 15 f4 ef4 16 gf4 Qh5 17 Qe1 Nhf6 18 Bd2 Nc5 19 Bf3 Qe8 20 Bxa5 Qe3+ 21 Kh1 Rxa5 22 Qxa5 b6 23 Qe1 Ng4 24 Qg3 Rf6 25 h3 Ne4 26 de4 fe4 27 hg4 ef3 28 Qxf3 Qe8 29 f5 Be6 30 Qd3 Qa8+ 31 e4 Bf7 32 Nf3 Qa4 33 Rb4 Qa8 34 Nd4 g6 35 Nc6 g5 36 Qc3 Kg7 37 Rf3 Qe8 38 Qd4 h5 39 Rg3 hg4 40 Ra4 Qh8+ 41 Kg2 Qh4 42 Ra7 1-0.

Doddy Apostol (1713) Glenn Umipeg (1776) St. George 1 e4 e6 2 d4 a6 3 Nc3 b5 4 Nf3 Bb7 5 Bd3 c5 6 dc Bxc5 7 00 Nc6 8 e5 Qc7 9 Re1 Nge7 10 Bf4 Rc8 11 Ne4 Qb6 12 Nxc5 Qxc5 13 Ng5 g6 14 Ne4 Qb4 15 Bd2 Qxb2 16 Nd6+ Kf8 17 Bh6+

Kg8 18 Nxb7 Nxe5 19 Nd6 Rc6 20 Ne8 f5 21 Bg7 d6 22 Qd2 Kf7 23 Bxh8 Kxe8 24 Bxe5 de5 25 Rec1 e4 26 Bf1 h5 27 Qe2 Rc3 28 Qd2 Nd5 29 Rab1 Qa3 30 Rb3 Qc5 31 Rxc3 Nxc3 32 Qh6 Kf7 33 Qh7+ Kf6 34 Qh8+ Kf7 35 Qh7+ Kf6 36 Qh8+ Kf7 37 a4 e3 38 Qh7+ Kf6 39 Bd3 ef+ 40 Kf1 Nxa4 41 c4 Nb6 42 Qh8+ Kf7 43 Qc3 b4 44 Qd2 Qd4 45 Ke2 f4 46 Bxg6+ 1-0

Eugene Open Dave Arganian - H. Pitre Caro-Kann 1 e4 c6 2 d4 d5 3 Nd2 ed4 4 Nxe4 Bf5 5 Nc5 e5 6 Nxb7 Qe7 7 Na5 ed4+ 8 Ne2 Qd8 9 Nb3 d3 10 cd3 Bxd3 11 Be3 Nf6 12 Ne3 Bxf1 13 Qxd8 Kxd8 14 000+ Nbd7 15 Rhxf1 Bb4 16 Rd3 Bxc3 17 Rxc3 Nd5 18 Rxc6 Nxe3 19 fe3 Ke7 20 Nd4 Rxc8 21 Rxc8 Rxc8+ 22 Kd2 Ne5 23 b3 f6 24 Rc1 Rd8 25 Rc7+ Rd7 26 Rxd7+ Kxd7 27 h3 g6 28 Kc3 Kc7 29 Nb5+ Kb6 30 Nd6 Kc6 31 Ne4 Nd7 32 Kd4 h6 33 a3 a5 34 g3 h5 35 g4 h4 36 g5 f5 37 Nd2 Nc5 38 Nf3 Nxb3+ 39 Kc4 Nc5 40 Nxb4 Ne4 41 Nxc6 Nxc6 42 h4 Nf7 43 Ne7+ Kd6 44 Nxf5+ Ke5 45 Ng3 Nh6 46 Kb5 Ng4 47 Nf1 Kf5 48 Kxa5 Nf6 49 Ng3+ Kg4 50 h5 Kxg3 51 h6 Kf3 52 Kb6 Kxe3 53 a4 Kd4 54 a5 Ke5 55 a6 Nd5+ 56 Kb7 1-0.

Woods-Jeffers from page 100.

**36 Qxe3 dxe3**

36...Qg2 37 Bg2 dxe3 38 Nd7 g4 39 Nxf8 Kxf8 looks a tad better. Black is hanging on.

**37 Rxc3 fg3 38 Nd7 g4 39 Ke2 Nc5?**

Now Black loses. 39...gf3 40 Bxf3 Rfd8 41 Nxb8 Rxb8 42 Kxe3 Kf8 43 Be2 Ke7 44 c5 g2 45 c6 Nc5 keeps in the game.

**40 Nxb8 Nxe4 41 Ke3 Nc3 42 Rb3 e4 43 Nd2 Nd1 43 Ke2 e3 44 Ne4 Nf2 45 Ng3 1-0**

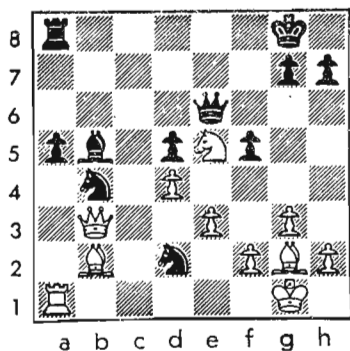
### TRI-CITY CHESS CLUB Report by Peter Dessales

Brian Day, rated at 1951, captured his first Tri-City Chess Club Championship by defeating the strongest field ever to participate in this annual event: two experts, five A players, and one B player. Two players, Jack Grigsby 1990 and John Myer 1946, did not complete their playing schedule in this seven round robin. Brian's perfect 5-0 score included wins over last year's champion Eugene E. Warner 2051 and also Steve Merwin 2019. Tied for second were Eugene Warner and Peter Dessales with 3½ each.

On May 18th, IM John Donaldson came to Richland for a lecture and simultaneous exhibition. Against a strong 22-player field, John won 17 games, lost 2 and drew 3. Brian Day and Steve Merwin won their games while Eugene Warner, Steve Friar and John Enk drew their games.

# SYNDICATED COLUMNS BY GRANDMASTER LARRY EVANS

Write the Editor if you think NORTHWEST CHESS should carry this column!



White to play and win  
**AN UGLY INCIDENT**

"Winning isn't everything. It's the only thing."

Taking a page out of Vince Lombardi's book, the Soviets would have done the coach real proud with their victory in the 27th Chess Olympiad at Dubai. Heavily favored in a record field of 108 nations, the Soviet juggernaut once again took the gold with 40 points, to ace out England at 39½ and USA at 38½.

But this victory was anything but routine. All hell broke out when the 5th-seed Yanks upset the Soviets 2½-1½, after inflicting a similar humiliation in the previous Olympiad. But 2nd-seed England took the lead briefly in round 10 and was paired against 14th-seed Spain, setting the scene for an ugly incident.

Jon Tisdall of Reuters reported: "The Spanish trainer was Soviet grandmaster Tomas Georgadze, and blood pressure began to rise when the English heard the Soviets had lent their files on them to help the Spanish team. Tony Miles was upset, calling the step 'not illegal but bordering on the immoral.' He quizzed world champion Gary Kasparov to confirm this rumor. Kasparov nodded and looked embarrassed. Miles asked a barbed rhetorical question, 'Is this part of your campaign to clean up chess?'"

"But the day was just beginning. As the session got underway, it became clear the Soviets decided to launch all-out psychological warfare. Their team buzzed around the English tables, leaned over the various positions, and conducted non-stop animated discussions in Russian. One must consider the tremendous excitement that Georgadze was experiencing. Not only was he seeing his trainees pulling off a stunning upset, but he was simultaneously helping his home country torpedo the leaders.

"English grandmaster Murray Chandler became visibly upset, but his requests to the arbiters to clear the playing area were ignored. Britain's Nigel Short, who was not

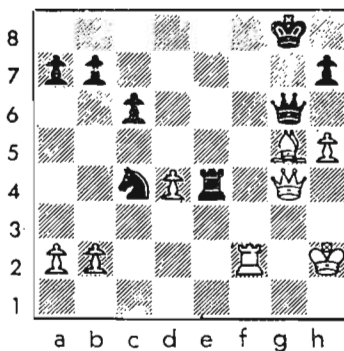
playing, grabbed me by the shoulder in quiet fury and said: 'This is a disgrace—they are cheating, cheating.' Between chats with the Soviets, Georgadze was overheard discussing moves, and transmitting them to at least one Spanish player. The English lodged an official protest and Georgadze was punished—with a warning."

When the smoke cleared, the underdogs routed England 3½-½. The British admitted they had been outplayed. Their quarrel was not with the good chess of the Spaniards, but with dirty Soviet tricks. A BBC film crew recorded this damning evidence of Soviet misbehavior for posterity.

One can only pity those pampered Soviet stars who are under terrific pressure to win at any price. They are expected to win, and they are punished if they don't.

Well, Soviet chess fans can breathe easy. Their supermen won the world team championship for the 14th time in 15 tries—with a little help from their friends.

(This theme was used in a TV Episode of Columbo.)  
**SOLUTION: 1 Qxb4 axb4 2 Rxa8 Bg3 Bxd5 Qxd5 4 Rxe8 mate.**



White to play and win  
**ABOVE SUSPICION**

Nobody trusts anybody anymore. Suspicion is epidemic.

The heavily favored Soviets won the 27th Chess Olympiad in Dubai under a cloud—in the last round they shutout 17th-seed Poland. Lev Alburt, a Soviet emigre and 2-time USA champ, wrote in **Chess Life**: "The Soviets—to the surprise of only the most naive—beat Poland 4-0."

In a record field of 108 nations, the plucky Americans drubbed the Soviets 2½-1½ and actually kept the lead going into the most exciting last round of Olympiad history. But their hopes were dashed in the end when 12th-seed Bulgaria held them to a 2-2 tie. So America had to be

content with the bronze, again closely behind Russia and England.

American grandmaster Lubomir Kavalek wrote in **New In Chess**: "Every time the U.S. team won another point, world champ Gary Kasparov became more anxious and more furious. Some of our wins seemed as miraculous as our Seirawan's win over him. Again and again an American would find himself in a drawn, or even lost position, and then win.

"You are lucky, very lucky," Kasparov told me and my American teammates at least once a day during the last 5 rounds. He could not believe his eyes. Later we learned he had accused us of cheating. He denied it, but it caused bad blood and two of our players offered to meet him anywhere, not necessarily to play chess."

Since Russia desperately needed all 4 points for the gold, was Poland forced to take a dive? Jonathan Tisdall of Reuters reported: "Kasparov was frantically agitated throughout the last round."

Indeed, the 23-year-old titleholder was the last to score the crucial win against Polish grandmaster Vladzimerz Schmidt. Gary Kasparov snared a pawn and quickly achieved an overwhelming position, yet Schmidt fought back valiantly to defend Polish honor and almost drew by a whisker.

The game looks real, but who knows? Judge for yourself.

White: KASPAROV Black: SCHMIDT  
Benko Gambit 1986

1 d4	Nf6	29 Nb5	Rxa4
2 c4	c5	30 Qxd5	Nxd5
3 d5	b5	31 Bxe5	dx6
4 a4	b4	32 Rxe5	Nf6
5 Nd2	g6	33 Re7	a5
6 e4	d6	34 Nd6	Rd4
7 Ngf3	Bg7	35 Nxf7	Kf8
8 g3	e6	36 Ra7	Rd7!
9 Bh3?	exd5	37 Rxd7	Nxd7
10 Bxc8	Qxc8	38 Nd6	Ke7
11 cxd5	0-0	39 Nc4	a4
12 0-0	c4	40 Kf1	Ke6
13 Qc2	c3	41 Ke2	Kd5
14 bxc3	bx3	42 Ne3	Kd4
15 Nb3	Qg4	43 Kd2	Ne5
16 Nd4	Qxe4	44 Kc2	Nd3
17 Qxc3	Nxd5	45 Nd1	Ne1
18 Qd2	Nb6	46 Kb2	Nf3
19 Re1	Qd5	47 h4	Ne5
20 Qd1	N8d7	48 Ka3	Ke4
21 Ra2	Bxd4	49 h5	gxh5
22 Rd2	Ne5	50 Nc3	Kf3
23 Nxd4	Nbc4	51 Nd5	Ng4
24 Rc2	Rac8	52 Ne7	Nxf2
25 Rc3	Nb6	53 Nf5	Ne4
26 Bb2	Rxc3	54 Kxa4	Nxg3
27 Bxc3	Rc8	55 Nh4	Ke4
28 Ba1	Rc4	White Resigns	

**SOLUTION: 1 Bh3! Qxd5 2 Rxe8 mate.**

# NORTHWEST POSTAL CHESS

Kristen S. Dietsch, Postal Chess Director

100 West Olympic Place, Apt 204; Seattle, Washington 98119-3749

## Masters (5)

1410 GREG VITKO  
1404 John Penquite  
1370 Richard Banner  
1348 Richard Schultz  
1212 Joe Doerr

## Experts (12)

1138 NORM ABRAHAMSON  
1097 Wayne Williams  
1093 Mike Darby  
1078 David Heap  
1075 Jeff Schuh  
1050 David Heap  
1045 Bob Jeffers  
1045 Jeff Lowery  
1042 Mike Mulord  
1033 Doug DeStasio  
1010 Bob Rittenhouse  
1000 Mark Tolliver

## Class A (22)

971 H. GRENINGER  
966 Mike Heinisch  
952 C. Carrothers  
947 Joe Eggertsen  
910 James Musumeci  
906 Lance Fleming  
903 Michael Vaughn  
902 Robert Allyn  
899 Scott Caldwell  
897 Larry Doll  
896 Bruce Jones  
893 Bill Arvola  
889 Harry McAndrew  
852 Pat Mead  
846 Steven Gordon  
841 Ron Norman  
822 Dave Bowman  
809 Mike Vinyard  
808 David Cornell  
807 Ron Zarges  
802 R. Schneider

## Class B (26)

786 WARREN CHASE  
775 Dave Donnelly  
773 Gerald Hawkins  
772 Dragan Jagnjic  
771 Thomas Elliott  
768 George Chue  
767 Kristen Dietsch  
739 Jeff Rolland  
711 Phillip Parrish  
689 Gabe Patterson  
680 Robert Haukap  
677 Daryl Ward  
669 G.K. Tan  
667 Doug Allen

659 Gerald Barker  
657 Rick Sweeney  
651 Dan McLeod  
646 Mark Doerr  
643 Murlin Varner  
643 Randy Smolensky  
631 Russell Miller  
630 Vincent Modica  
625 David Hattery  
618 Eric Kashino  
612 Joe Cannon  
600 Chris Cambern

## Class C (29)

589 LARRY ANDERSON  
586 Stephen Chase  
586 John Kielb  
573 Mike Crowley  
560 J. Wilushewski  
554 Garrroll Salmons  
549 J. Cogdonchurch  
549 John Goodale  
547 Richard Mangus  
543 R.P. Feichtl  
541 Earl Daniel  
541 Thomas Thrush  
537 C. Nichols  
536 Jeff Jarvis  
522 Roy Cunningham  
500 Randy Parr  
500 Paul Lowry  
500 Don Lundberg  
498 Charles Sacks  
492 Don White  
468 Darwei Kung  
462 Ernest Moore  
459 Eugene Tipton  
452 J.-Y. Larouche  
445 Billie Slagle  
442 Michael Frank  
413 Skye Elder  
400 Steven Aamodt  
400 Arnold Rustin

## Class D (14)

385 ROGER NAKANISHI  
372 Colleen Chase  
365 Ken Eddy  
361 Jeff Combs  
350 Sal Agate  
350 Patricia Lowry  
300 Louis Moxey  
290 Lavern Davis  
282 Ron Hill  
222 Joe Running  
200 Larry Ovall  
159 Mike Gusinow  
65 David Shaw  
50 Curt Collyer

## April Results

85NW5 Dietsch =16 Jeffers. 85B1 Patterson =36 Schneider. 86C2 Jean Bishop F's. 86CM2 Doerr 23 Cunningham. 86CM20 Cunningham 17 Daniel. 85CC3 Jones 22 Norman. 86CM19 Greninger 30 Mulford. 86W01 Mulford 21 Carrothers. 86C2 Goodale =4 Kashino 85A1 Fleming 19 Donnelly. 86C1 Thrush 31 Cannon. 86NW5 Arvola =7 Jeffers. 86CM20 Daniel 32,29 Cunningham. 85CM24 Daniel 29 Smolensky. 86A2 McAndrew 15 Allen. 86NW4 Allen 36 Arvola. 86CM27 Schneider 11,10 Daniel. 86X1 Rittenhouse 28 Heap. 86X1 Abrahamson 18 Rittenhouse. 86A1 Woods 22 Jagnjic. 86NW2 Norman 25 Zarges. 86CM26 Allen 13 Daniel, Daniel 36 Allen. 86B2 Smolensky 26, 24

## TOURNAMENTS AVAILABLE

### Postal Foursome:

Our standard event, entry is \$1.50 per section. A four-player double round robin with one or two classes - state if you prefer to be paired with higher, same, not lower, or lower class. Another entry or request certificate if a clear first place score.

### Challenge Match:

Two to six games with your opponent or ours, the \$1.50 entry per match may be shared. Allso, opening themes are rated.

### Washington-Oregon Match:

Free to all active residents with no forfeit or withdrawal losses in the prior year. An annual event, enter by February 28th - the last dropped if teams' counts are unequal. Each player plays two game against one opponent. Certificate awarded to plus scorers upon request.

### Thematic Fivesome:

A unique event for opening practice, entry \$1.50 each section. A 5-player round robin in 1 or 2 classes, no preferences. Each player picks one opening per opponent from a list - sent with assignment only, but refunds granted. Chooser's color changes with opponent, so each player picks two games with White and two with Black. Major lines (such as most QGD's, Ruy's, Sicilians, etc.) selectable by either color, while the rarer ones by the player at risk only (examples: KG and Poisoned Pawn by White only, and Latvian by Black only). Chooser's line ends with his first deviation from the last moves.

Wilushewski. 86CM11 Smolensky 20 Cunningham. 86CM24 Smolensky 20 Daniel. 86NW1 Heinisch 9 Smolensky. 85CM15 Caldwell 12 Smolensky. 85 CC3 Smolensky =9 Schneider. 86CM19 Greninger =4 Mulford.

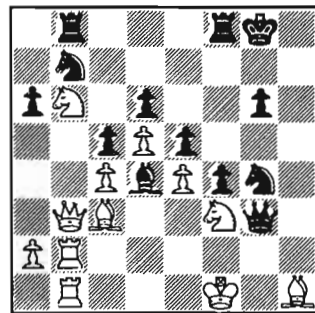
## 1986 Game of the Year

### 8th Place

After 1.c4 Nf6, Black must be prepared for the English if White plays d3 (and can choose the Anglo-Indian or Symmetrical with ...c5), Queen pawn games if White plays d4, and the Reti and other lines that have c4. Here Black also kept his options open, and offered on move 6 to enter the Benoni. White declined, and Black's 7...Nc6 transposed into the sharp Panno Variation of the King's Indian Defense after 8. d5. White's attack on the Queenside failed, but Black's on the Kingside did also, but with material. Notes by David Heap. Sec 84B1 Dana Woods-Bob Jeffers.

1 c4 Nf6 2 Nc3 g6 3 g3 Bg7 4 Bg2 00 5 Nf3 d6 6 d4 c5 7 00 Nc6 8 d5 Na5 9 Nd2 a6 10 Qc2 Rb8 11 b3 b5 12 Bb2 Bd7 Kasparov (BCO) gives 12... Bd7 a ? and recommends 13 Rab1 e5 14 de6 fe6 15 Nce4 Nxe4 16 Bxg7 Nxd2 (?) 17 Bxf8 Nxb1 18 Bxd6

Na3 19 Qc1 as winning for White (Korchnoi - Ciocaltea, Hamburg 1965); however, NIC (New Ideas in Chess) recommends 13 Rael as below, then 13...Qb6 14 Nd1 bxc4 15 Bxc4 Ne8 16 Bc3 Bxc3 17 Qxc3 Qb4 18 Qd3 (Taimanov), giving also 13 Rab1 e5 14 dxex6 fxe6 115 cxd5 axb5 16 Nce4 Bc6 17 b4 Be4 18 Ne4 Nc4 as unclear. 13 Rael bxc4 14 Bxc4 e5 15 Nd1 Nh5 16 e4 f5 17 f3 f4 18 g4 Nf6 19 Bc3 Ne8 20 Nb2 Bf6 21 Rb1 Bh4 22 Na4 Nb7 One can see that White is getting the better of it. 23 Rb2 h5 24 Rfb1 Bc8 25 h3 hxg4 26 hxg4 Nf6 27 Nb6? 27 Nxc5 is the winning move. After 27...Rf7 28 Nd3 White is in command all the way. [Interesting, perhaps is 27...dxc5 28 Bxe5 Ra8 29 Rxb7 Bxb7 30 Rxb7 Ne8. On short notice, Mike Mulford said he would give White an advantage of between a += and a +-, but not a win] White just gets 2 pawns for the exchange and lots of practical chances. 30...Bg5 loses. 27...Bg4! 28 fxc4 Nxc4 29 Qa4?! Better would be 29 Qd3. 29...Bf2+ 30 Kf1 Qh4 31 Nf3 Qg3 32 Bh1 Bd4 33 Qb3



33 ...g5!?

If 33...Bxc3, then White's King escapes with 34 Qxc3 Rf7 35 Rg2 Qh3 36 Ke2. However, 33...Kg7! 34 Be1 Qh3 35 Bg2 Nh2 36 Nxb2 Qxb2 37 Bxf2 loses the exchange, and 34 Ke2 Rh8 35 Bxd4 cxd4 36 Rg1 Rh2 37 Kd1 Rxh1 38 Rxh1 Ne3+ 39 Kc1 Nc5 loses even more. [34 Bxd4 cxd4 35 Rg2 Qh3!]

34 Bxd4 cxd4 35 Rg2 Ne3+

(Continued on page 98)

# SEATTLE SEFAIR

July 25-26, 1987

Edmonds, Washington

## \$850.00 GUARANTEED CASH PRIZES

1st-2nd Overall: \$250-\$100  
1st Under 2100: \$100  
1st Under 1900/Unrated: \$100

### OPEN SECTION

4-SS, Open to all.  
TC: 40 moves 2 hours, then 20/1.  
No 1/2 point bye. Rds 10-5 Sat, 10-5 Sun

### PREMIER SECTION (1600-1899):

1st-2nd-3rd Overall \$125-\$50-\$25  
1st 1700-1799 \$50; 1st Under-1699 \$50

### AMATEUR SECTION (Unrated-1599):

Trophies, Certificates and Books

Five round swiss, Time Control 40 moves in 90 minutes, then 15/30, then  
15 per player Sudden Death. 1/2 point bye option rounds 1-3; once only.  
Rounds: 10-2-7 Sat; 10-4 Sun.

### ALL SECTIONS

Please bring set and clock. Reg Sat: 8:45-9:30 am. (Memberships can be paid then)  
Ratings used for prizes: Latest USCF rating supplement. For Canadians, higher  
of latest available USCF/CFC ratings. Memberships required (or join): USCF and  
OCF/WCF for OR/WA players; USCF only for all others. Limit one (highest) prize per person.

### ENTRY FEES

OPEN: \$25.00 if received by July 24; \$30.00 at registration  
PREMIER: \$20.00 \$25.00  
AMATEUR: \$5.00 \$7.00  
(Free entry into Amateur Section if joining USCF for the first time)

SITE: Seattle Skating Club Bingo Hall, 22111 Hwy 99 (on Aurora Ave a mile or so  
north of Aurora Village Shopping Center), Edmonds WA. Restaurants and fast  
food outlets nearby. No smoking in tournament room; wheelchair access, no computer entries.

TD: Robert A. Karch, Everett (206) 355-1816; Organizer: Russell Miller, 935-8440 (wk)

Send Check/Money order to: Russell W. Miller  
4519 California Ave SW  
Seattle, WA 98116

## PIONEER WEST BOOKSHOP

4519 California Ave SW, Seattle, WA 98116-4110

Phone: (206) 935-8440

### CHESS BOARDS (Price, Stock Number, Description)

\$5.00	1201	Vinyl rollup 24" Non-algebraic: Green/white, Green/beige, Brown/white, Brown/yellow
\$5.25	1202	Vinyl rollup 24" Algebraic: Green/white, Green/beige, Brown/white, Brown/yellow
\$3.50	1203	Vinyl rollup 1 7/8" Either: Green/white or Brown/white

### CHESS CLOCKS

\$44.00	1001	DeLuxe Wood Jerger #2-400
\$38.00	1004	Jerger Blitz Speed #3-412
\$40.00	1005	Goldfield with bars
\$26.00	1007	Plastic Rolland Pocket Size
\$29.00	1008	Wood Rolland Pocket Size

### CHESS SETS

\$8.00	1101	DeLuxe Solid Plastic 3 3/4" King
\$11.00	G 250 76	Ebony and boxwood 3 3/4" King
\$22.00	1103	Rosewood/Boxwood 3 3/4" King
\$8.00	103-255	Boxwood, Tinted 2 1/2" King
\$33.00		Jacques Ebony heavy 4 1/2" King
\$35.00	1108	French Lardy in wood chest

### SCOREBOOKS

\$3.00 1302 Spiralbound 50 games, 80 moves (2 diagrams on back of each page)

### WEIGHTED PLASTIC CHESS SETS

\$29.00 1109 Druke double weight (simulated maple/ebony) 3 1/2" King, Sliding top wood box  
\$22.50 1110 Cavalier double weight (simulated maple/ebony) 4" King, simulated wood box

### ECONOMY WOOD CHESS BOARD

\$10.00 WB85e Inlaid 2" squares, varnished walnut/light yellow, 5/16" thick

Send SASE if you want to see a picture of a set. The picture will be sent with the understanding that it be returned. Retail price list subject to change w/o notice. DELIVERY by UPS in Contiguous USA: by Parcel Post if no street address. SHIPPING/HANDLING: Minimum \$10 order; If total \$10 to \$24.99, add \$3.85; If \$25.00 to \$49.99, add \$4.55; If \$50 to \$74.99, add \$4.95; if \$75 to \$99.99, add \$5.85; If \$100.00 or more, add 7%. WASHINGTON RESIDENTS: add .079% Sales Tax.





# U.S. OPEN CHESS CHAMPIONSHIP

## August 2-14, 1987

### Portland, Oregon

- Twelve round swiss, one round per day
- \$20,000 in guaranteed cash prizes — \$5000 First Prize donated by Fidelity International
- Many daytime special events
- Grandmaster participation
- 150 Grand Prix Points available
- U.S.-Fidelity Speed Championship August 8 — \$1000 donated by Fidelity International
- Busyperson Special for play in the final six rounds

Portland is the ideal vacation spot for the whole family, within easy reach of year round skiing at Mt. Hood, the Columbia River Gorge, the active volcano, Mt. St. Helens, and the beautiful public beaches of the Pacific Coast.

Sponsored by the United States Chess Federation and the Oregon Chess Federation. Current U.S. Champion, GM Yasser Seirawan and GM Arthur Dake, Honorary Co-Chairmen of the Organizing Committee

#### The Playing Site

The Portland Hilton is a beautiful modern hotel, located in the heart of America's "Most-Livable" city . . . featuring three restaurants, two lounges, fitness center and outdoor swimming pool. Train and bus stations are close by, and the airport only minutes away. Register early, and take advantage of the special low room rates for the open: Single \$48, Double \$52, Triple \$57, Quad \$64.

Call the Hilton toll-free 1-800-455-8667.  
In Oregon, (503) 226-1611, x122 or x109

Fly **NORTHWEST AIRLINES** to the U.S. Open Chess Championship in Portland, Oregon and get a special discount on air fare.

Best discounts go to those who book early.

#### CALL TOLL-FREE:

**1-800-328-1111** weekdays between 8 a.m. and 8 p.m. Central time.

In Minnesota, call: 1-800-272-1408

In Canada, call: 1-800-378-7747

Mention Special Code 11798

**NORTHWEST** is the official airline for the 1987 U.S. Open.

For more information, contact Dr. Ralph Hall, Chief Organizer, 408 Ogden Dr., Oregon City, OR 97045



### 1987 U.S. Open Entry Form

Mail with your \$65 advance entry to:

Name \_\_\_\_\_

Address \_\_\_\_\_

City \_\_\_\_\_ State \_\_\_\_\_ ZIP \_\_\_\_\_

USCF ID \_\_\_\_\_ Exp. \_\_\_\_\_

**U.S. Chess — Entries**  
**186 Route 9W, New Windsor, NY 12550**  
or charge your  Amer. Exp.  MC  VISA

Card No. \_\_\_\_\_ Exp. \_\_\_\_\_

Signed \_\_\_\_\_

# TOURNAMENT ANNOUNCEMENTS

RATES: \$5.00 per insertion for Tournament Announcement (TA) which supports the State Chess Federation and collects NWC subscriptions; \$20 otherwise. Mail TA with payment (payable to Northwest Chess) to Robert A. Karch, 12414 Hwy 99, Suite 208, Everett, WA 98204. Phone: (206) 355-1816. Tape recorder accepts messages 24-hours.

## Jun 13: Seattle Chess Club Octagonals

3-SS 40/90 then 25/1. USCF membership required or join at site. 8 player sections. Site: Seattle CC, Ravenna Bryant Ctr. Corner 68th and Ravenna Ave NE, Seattle EF: \$4 \$5 if nonmember of SCC. WCF Membership reg. Prizes: \$15/\$5 each octag. Reg: 9-9:45am Rds 10-2-6 Info: Stan Scott ph (206) 522-0694 or Jerome Buroker ph (206) 783-5145

## Jun 13-14: Evergreen Open

5-SS 1-3 40/90 SD/30 4-5 40/90 25/1 SD/30 Masonic Temple 2530 Grandview Dr. W. Tacoma WA EF: \$18 if rec'd by 6/12 23 at site plus USCF and WCF/OCF. Prizes: (\$455 based on 35 players) 1st-\$135 A,B,C,D/Unr each \$80 Reg: 9-9:45am Rds 10-2:30-7 Sat, 10-5:30 Sun. Entries: Gary Dorfner, 8423 E."B" St.,Tacoma WA 98445 ph (206) 535-2536 NS,NC,W

## Jun 20: Fairwood Tornado

Fairwood Library, 17009 140th Ave SE, Renton Open to all FREE Cert.prizes (no \$\$ awards) RR based on 3x8 member groups (Max capacity 28) Bring self, set, clock. Doors Open 10 am; start 10:30 Info: Dave Bicknell, Wallace and Wheeler ph 854-0933 or 271-9473

## Jun 27-28: White Rock Sea Festival

4-SS 40/90 then 30/1 then SD/15 Lower Town Centre Basement, 15150 Russell Ave (1 block S of Johnston & North Bluff, White Rock BC Sections: Open, Under-2000, Under-1800, Under-1600, & Under-1400 and unrated. Rds 10:50 am, ASP Sat, Noon, ASAP Sun PRIZES: Cash and Merchandise based on entries. EF: \$15 \$12 Jrs \$5 no-prize option for non-White Rock-Surrey residents in the lowest 2 sections, entry fee as minimum prize for masters. Free to new CFC members. All players must be members of the Chess Federation of Canada (\$20 Adult) or \$6 CFC tournament membership + \$9 Counterplay Sub. Reg: 10-10:30 Adv to: White Rock CC, 15953 Buena Vista, White Rock BC V4B 2A2 NS NC Info: Eric Trowbridge (531-6001) or Bob Holmes (531-6460)

## Jul 11: Seattle Chess Club Octagonals

3-SS 40/90 then 25/1. USCF membership required or join at site 8 player sections. Site: Seattle CC, Ravenna Bryant Ctr. Corner 68th and Ravenna Ave NE, Seattle EF: \$4 \$5 if nonmember of SCC WCF Membership reg. Prizes: \$15/\$5 each octag. Reg 9-9:45 am Rds 10-2-6 Info: Stan Scott ph 522-0694 or Jerome Buroker 783-5145

## Jul 11-12: Lakefair Open

Olympia Comm Ctr, 222 N. Columbia, Rooms 101-102, Olympia, WA EF \$26 jr \$21 if rec'd by Jul 8, \$31 at site. USCF & NW or state/prov memb req. \$\$G 1-2-3 \$250-\$150-\$100, Exp, A, B, C, D/Unr each \$100-\$50, elig for 1 prize only. USCF unr, other ratgs used. Reg 8:30-9:15 am, Rds Sat 10-2:45-7:30, Sun 11-4:30. Hotel rates: Carriage Inn Motel, 1211 S. Quince: (206) 943-4710, \$28.50 and up + tax. Info/Entries Joel Barnes, c/o Dave Rupel, PO Box 91, Olympia, WA 98507. Ph: (206) 456-2089, Clark Harmon. NS, NC, W. 10 Grand Prix points avail.

## Jul 25-26: Seattle Seafair See Page 101

## SIDE EVENTS: 1987 U.S. OPEN

★ *Portland Hilton Hotel, 921 SW 6th, Portland, Oregon. Organizer: Clay Kelleher, 8815 SE Mill St, Portland 97216. Advance entries may be sent to Mr. Michael Morris, Treasurer, US Open Committee, 1530 SW Taylor St, Portland, OR 97205.*

### ★ Saturday, August 1

★ PACIFIC BEGINNERS OPEN (U-1200 or Unr) 4-SS, Game/50, EF \$8, USCF memb. Reg 8-8:45 am, Rds 9:30, 11:15, 1:30, 3:30

### ★ Saturday, August 1

★ PACIFIC 30/30 OPEN, 4-SS, 30/30, 30SD, EF \$10, \$\$ 100-50 25 A,B,C,D/Unr. Reg 8:30-9:30 am, Rds: 10-12-2-4. USCF-Rated

### ★ Sunday, August 2

★ MT. RAINIER QUADS, 3-RR, G/90, EF \$8, \$\$ 20, Reg: 8-9 am; Rds: 9:30, 12:30, 3:30. USCF-Rated

### ★ Monday through Saturday, August 3-8

★ ARNOLD DENKER HIGH SCHOOL CHAMPION OF CHAMPIONS (By invitation) Rds: 10 am daily.

### ★ Monday and Tuesday, August 3-4

★ PACIFIC YOUTH OPEN (Born after Nov 15, 1968) 4-SS, 40/80, 30 SD, EF \$5 \$\$ 40-20-10, 10 B,C,D/Unr. Reg 8:30-9:15 am, Rds 10, 2, 10, 2. USCF-Rated

### ★ Monday and Tuesday, August 3-4

★ COLUMBIA RIVER OPEN, 4-SS, 40/90, 30SD, EF \$10, \$\$ 90-40, 20 A,B,C,D/Unr; Reg 8-9 am, Rds: 9:30, 2; 9:30; 2. USCF-Rated

### ★ Wednesday, August 5

★ PORTLAND TEN MINUTE OPEN, 7-SS, Game/10, EF \$10, \$\$ 80-40, 20 A,B,C,D/Unr Reg. 8:30-9:30 am, Rds: 10-2

### ★ Thursday, August 6

★ MOUNT ST. HELENS QUADS, 3-RR, Game/90, EF \$8, \$\$ 20, Reg 8-9 am, Rds 9:30, 12:30, 3:30. USCF-Rated.

### ★ Friday, August 7

★ MOUNT HOOD QUADS, 3-RR, Game/90, EF \$8, \$\$ 20, Reg 8-9 am, Rds 9:30, 12:30, 3:30. USCF-Rated.

### ★ Saturday, August 8

★ U.S. - FIDELITY SPEED CHAMPIONSHIP, Game/5. EF \$10, \$\$ based on entries (\$1,000 donated by Fidelity Corp). Reg 4:30-5:30 pm, Rounds 6 to 10:30 pm.

### ★ Saturday and Sunday, August 8-9

★ PACIFIC WEEKEND OPEN, 4-SS, 40/90, 30 SD, EF \$10, \$\$ 90-40 20 A,B,C,D/Unr. Reg 8-9 am, Rds 9:30, 2, 9:30, 2. USCF-Rated

### ★ Sunday, August 9

★ NORTHWEST BEGINNERS OPEN (U-1200 or Unr) 4-SS, Game/50, EF \$8, USCF memb. Reg 9-10 am, Rds 10:30, 12:15, 2:30, 4:30

### ★ Monday, August 10

★ MT. JEFFERSON QUADS, 3-RR, Game/90, EF \$8, \$\$ 20, Reg 8-9 am, Rds 9:30, 12:30, 3:30. USCF-Rated.

### ★ Tuesday, August 11

★ MT. MAZAMA QUADS, 3-RR, Game/90, EF \$8, \$\$ 20, Reg 8-9 am, Rds 9:30, 12:30, 3:30. USCF-Rated.

### ★ Wednesday, August 12

★ FIVE MINUTE OCTAGONALS, 14-RR, Game/5, EF \$8, \$\$ 30-15 each 8-player sections, Reg 8:30-9:30 am, Rounds 10-1:30

### ★ Wednesday, August 12

★ MAD MACK'S SIAMESE OPEN, RR, Game/5, EF \$8 per team. \$\$ 40-20 Reg 1-1:30 pm, Rounds 2-5 pm.

### ★ Thursday, August 13

★ MT. SHASTA QUADS, 3-RR, Game/90, EF \$8, \$\$ 20, Reg 8-9 am, Rounds 9:30, 12:30, 3:30. USCF-Rated.

### ★ Friday, August 14

★ LAST CHANCE 30/30 OPEN, 4-SS, 30-30, 30SD, EF: \$10, \$\$ 80-40 20 A.B.C.D/Unr. Reg 8:30-9:30 am, Rds 10,12,2,4. USCF Rated.

**REGIONAL CHESS CALENDAR**  
*One-line event announcements are free*

**June 1987**

5,12,19,26	Seattle Chess Club D-Day Swiss	Seattle
7 (1 pm)	US Open Committee Meeting (Aug issue NWC)	
6-7	Burnaby Open	Simon Fraser U
10	IM Donaldson simul (206) 456-2089	Olympia
11	IM Donaldson simul (206) 577-4399	Kelso-Longview
12 (7 pm)	Dr. Minev: Q/Minor Pieces Endings	Seattle CC
13	Seattle CC Octagonals	Seattle CC
13-14	Tacoma CC Evergreen Open	Tacoma
13-14	Rose Festival Open	Portland
14-19 (week)	US Senior Open	San Diego
15	IM Donaldson simul (503) 231-5123	Portland
16	IM Donaldson simul (503) 946-1373	Eugene
20	Fairwood Tornado	Renton
20-21	Summer Open	Victoria, BC
27-28	Sea Festival Open	White Rock, BC

**July 1987**

3,10,17,24,31	Blazing Saddles Tmt	Seattle CC
3 (7 pm)	Dr. Minev: Complicated Endings	Seattle CC
4-5	Pre-Master Tournament II	Vancouver, BC
11 (10 am)	US Open Committee Meeting	Oregon City
11	Tacoma CC July Quads	Renton
11	Seattle CC Octagonals	Seattle CC
11-12	Idaho Class Championships	Boise
11-12	Lakefair Open	Olympia
18	Manito Park Open	Spokane
18-19	Tacoma CC Puget Sound Open	Tacoma
18-19	Vancouver Tournament	Vancouver, BC
25-26	Seafair	Edmonds
26 ??	WCF Annual Meeting (date/location not firm)	

**August 1987**

1	Tacoma CC August Swiss	Renton
1 (10 am)	US Open Committee Meeting	Portland
1-3	Victoria Open	Victoria, BC
2-14 (2 weeks)	US Open (7 pm daily, except Sat)	Portland
7,14,21,28	Long Hot Summer Tmt	Seattle CC
7-9	USCF Delegates Meetings	Portland
8	US Speed (Fidelity) Championship	Portland
9-14 (1 week)	US Open Busypersons' Special	Portland
15-16	Tacoma CC Woodpushers Open	Tacoma
17	GM Simul (Tentative)	Spokane
21	Seattle CC Octagonals (Hi-Roller)	Seattle CC
29	South Seattle Blaine Memorial IV	Seattle
29-30	Pre-Master Tournament III	Vancouver, BC

**September 1987**

4	Speed Tmt, 2 Sections	Seattle CC
5	Tacoma CC September Quads	Renton
5-6	Eastern Idaho Open	Pocatello
5-7	Oregon Open XXXVI (Location not confirmed)	
11,18,25; Oct 2	Class Act Tmt	Seattle CC
11-13	Reno Open	Reno
12-13	Kelowna Fall Challenge	Kelowna
19	Seattle CC Octagonals	Seattle CC

19-20	Eastern Washington Open	Spokane
19-20	Tacoma CC Fall Open	Tacoma
30,--	Autumn Quads	Spokane

**October 1987**

-- 7,14	Autumn Quads	Spokane
3	Tacoma CC October Swiss	Renton
3-4	Aurora Congress II	Edmonds
3-4	Albany Autumn Open	Linn-Benton CC
9	Fall Simul	Seattle CC
10	Walla Walla Team Championship II	Walla Walla
10-13 (3 days)	Fraser Valley Open	Clearbrook, BC
16,23,30; Nov 6,13	Halloween Horrors Tmt	Seattle CC
24	Seattle CC Octagonals (Hi-Roller)	Seattle CC
24-25	Inn at Spanish Head Open	Lincoln City
24-25	Tacoma CC Hobgoblin Open	Tacoma
31-Nov 1	Oregon City Open	Oregon City

**November 1987**

7	Tacoma CC November Quads	Renton
14	Seattle CC Octagonals	Seattle CC
20	Nutty event to be described later	Seattle CC
21-22	Tacoma CC Thanksgiving Open	Tacoma
27; Dec 4,11,18	Snowbound Swiss	Seattle CC

**December 1987**

5	Tacoma CC December Swiss	Renton
12	Seattle CC Octagonals (Hi-Roller)	Seattle CC
12-13	Pre-Master Tournament IV	Vancouver, BC
13	Open High School Tournament	Sandy HS
19-20	Tacoma Santa Claus Open	Tacoma
26-27	Northwest Christmas Congress	Edmonds

**January 1988**

8,15,22,29; Feb 5,12	Club Championship, 6 SS	Seattle CC
16	Seattle CC Octagonals	Seattle CC
23-24	Linn-Benton Open	Linn-Benton CC

**February 1988**

13	Seattle CC Octagonals (Hi-Roller)	Seattle CC
19	March Hare Speed Tmt	Seattle CC
26; Mar 5,12	Spring Team Quads	Seattle CC

**March 1988**

13	Seattle CC Octagonals	Seattle CC
19	Spring Simul	Seattle CC

**April 1988**

5; Apr 2,9,16,23	April Showers Swiss	Seattle CC
10	Seattle CC Octagonals (Hi-Roller)	Seattle CC

**May 1988**

21-22	Willamette Valley Open	Linn-Benton CC
-------	------------------------	----------------