

# NORTHWEST CHESS LETTER

AUGUST 65

## WASHINGTON

Seattle Chess Club  
766 Thomas St. (near Dexter & P.I. Bldg)  
Friday evenings WA 2-3332

Boeing Employees' Chess Club  
Plant #2 Cafeteria  
Tuesday evenings

University of Washington  
Student Union Bldg.  
Mon. & Fri. 2:30 P.M.



West Seattle Chess Club  
High Point Rec. Center  
2nd & 4th Fri. 7 P.M.

Bellingham Chess Club  
Leopold Hotel  
Friday evenings

Chelan Chess Club  
c/o Russell Miller, Phone 554

Greys Harbor Chess Club  
Hogiam Y.M.C.A.  
Tuesday evenings



Kitsap County Chess Club  
Dr. Almond's residence  
Poulsbo, Wash. 2nd & 4th Fri.

Twin Cities Chess Club  
c/o Norman Stough  
1204 S. Gold St. Centralia

Tacoma Chess Club  
Library, 11th & Tacoma Ave.  
Friday Evenings

Spokane Chess Club  
Y.M.C.A. w. 921 Main  
Thursday evenings



Canas, Washington  
Library Basement  
Tues. evenings

Eigerwand  
41st & University, Seattle  
evenings

## OREGON

Ashland Chess Club  
Mark Anthony Hotel  
Sun. 2 P.M. Thurs 7 P.M.

Portland Chess Club  
411 Henry Bldg.  
c/o Paul Decker, Sec'y  
2044 E. Everson



Portland State College  
College Center  
2 P.M. Fridays

The Dalles Chess Club  
H.R. Davidson, Sec'y  
1625 East 9th

Medford Chess Club  
Colony Restaurant  
Wednesday evenings



University of Oregon  
Erb Memorial S.U. Bldg.  
Thursday evenings

Brookings Chess Club  
Pelican Bay Art Studio  
Tuesday evenings



## IDaho

Canyon County Chess Club  
Community Center, Harpa  
Thursday evenings

## Montana

Kalispel Chess Club  
Vernon Wynn, Sec'y  
507 W. Arizona Street.



## BRITISH COLUMBIA

1337 The Crescent, Vancouver (Headqt.)  
2695 W. Broadway  
543 Seymour Street  
West Blvd. & 42nd Ave.  
Brock Hall, University  
Kitsan House, Moody Park  
N. Vancouver Community Center

Editor-Publisher Richard Parsons  
522 16th E. EA 5-8568 Seattle 98102

Circulation & Postal R. R. Merk  
1026 N.E. 71st. St. LA 2-2954 Sea. 15

Treasurer F. H. Weaver  
501 Olympic Place AT 2-7704 Seattle 99

Ratings Director F. M. Howard  
5940 36th Ave. S.W. WE 2-1063 Seattle 6

Tournament Director MA 3-1219 Buz Eddy  
504 Terry Ave., Apt 209 Seattle

#### CORRESPONDENTS

Northwest Chessboard David Fulton  
4632 22 Ave N.E. LA 2-1882 Seattle 98105

Synopsis of Chess Promotion Joachim.

Seattle Chess Club News Howard&Garrott

Problem Corner Fulton & Lauren Owens

#### W.C.F. Officers

Clark Harmon President  
304 Garden St. AL 5-8047 Renton 98055

Edward Bosse Vice-President  
923 S. 8th. St. MA 7-6518 Tacoma 98405

Charles Joachim Sec. & Pub. Director  
4721 34th N.E. LA 4-2167 Seattle 98105

#### USCF Regional Directors

- 1 Buz Eddy
- 2 Russell Miller PO Box A Chelan 98816
- 3 William Blackmore  
2814 Grove St. Bellingham

USCF Regional Vice President  
Dick Vandenburg 2316 Regan Ave. Boise 1

Our president Clark Harmon wrote a letter to Mr. Morgan of the USCF Nominating Comm. recommending both Mr. Eddy and Mr. Miller for this soon to be vacant office. He and many of the others in this area are hoping that we will again have one of our men filling this office instead of losing it to another area such as Nevada. Only time will tell.

Well, the '65 Northwest Postal Tourney is one month old. Perhaps a report of some type is in order.

A person glancing at the list of participants walks away with one distinct impression... the strong players just do not like money! Perhaps \$50 has no significance for the strong boys. Maybe this twist might help them. \$50 roughly translates to 333 cups of coffee at the Eigerwand, or 18 performances at the Ashland Shakespearean Festival, or three nights at the Portland Hilton. That's coin! The "B" players, however, do not seem to mind if the sleeping giants have an aversion to money! They aren't fighting for class "B" money, they're looking at the big money! Have a look yourself.

The lineup in section #1 looks like this: Dick Hainsworth, Oliver Morris, Rusty Miller, Paul Becker, John Reh. In section #2: Rusty Miller, John Walker, Peter Olson, Eddie Sonier, Dick Parsons. And here's the first three players in section #3: Dick Parsons, Gene Webb, Jan Roskan.

The breakdown by class is most enlightening. We have 2 class AA players, 1 lonely class A player, one extremely lonely class C player, and 7 fighting class B players. Well, we know who's going to take the class "A" and class "C" marbles! Two of our competitors have taken out insurance, the editor, Dick Parsons, with his 4 by 20 foot bookcase full of chess books for one, and Eastern Washington's answer to Parsons, Rusty Miller. Both sent along an extra dollar for another section.

Don't despair, though! You still have until Dec. 15th to send your \$2.50 entry fee to me.

#### SOME REMINDERS

September First is but a month away. I trust you have renewed or joined at our old rate of \$2.00 a year. Or have you? Mark this date on your 1966 chess calendar. January 8-9...that is the weekend of the BIG Washington Open.

#### PUBLICATION DEADLINES!

The September issue will be accepting items for publication till... AUGUST 20!

TOURNAMENT SCHEDULE

Aug. 7-8 Seattle Seafair Open  
 Aug. 21-22 Ashland, Oregon Open  
 Sept 4-6 Oregon Open  
 Sept 6 Treasure Valley Open.  
 Sept 18-19 Northwest 30/30 Open  
 Oct. 2-3 Russe de Guere Open  
 Oct. 16-17 Peach Arch Open  
 Oct. 30-31 Washington Woodpushers  
 Nov. 13-14 Klamath Falls Open  
 Nov. 27-28 Northwest Open  
 Dec. 4 Western Idaho Open  
 Dec. 27-28 Northwest Junior  
 Dec 31-Jan 2 N.W. Invitational (tentative)  
 Jan. 8-9 Washington Open

SEAFAIR OPEN CHESS TOURNAMENT

August 7-8

Play will start Saturday at 9AM and on Sunday at 8AM (Expected to end about 7PM Sunday evening.

Seattle Center (Former Food Circus) on the balcony.

Tie breaking- Median & Solkoff

T.D. Buz Eddy

Defending Champ Victors Pupols

Group I: \$5.00 plus USCF and WCF memberships.

Group II:\$3.00 WCF membership Req. limited to 1800 and below

Guaranteed \$100 for first prize Also cash prizes for Group II.

NORTHWEST 30 / 30

September 18-19

11 Round Swiss

Time 30 moves in 30 min

Secondary time also 30/30

Tie breaking- Solkoff & Median

Entry Fee: \$4 plus WCF membership

Place: Boeing II Cafeteria

Register 9:30 AM Sat. Sept. 18

Prizes: Cash

Tournament Director: Buz Eddy

Defending Champ: Clark Harmon

In this tournament you play 11 rounds and a loss or two will still keep you in the running, why not give it a try?!

5th ANNUAL PEACH ARCH OPEN

October 16th and 17th

Convention Hall, Hotel Leopold Bellingham, Washington

Register: 9AM opening round at 10AM Saturday October 16th.

Entry Fee: \$4.00 (\$3.00 if under 21), no memberships required

Time Control: 50/2

Prizes: 1st 40%, 2nd 25% 3rd 15% Junior, A,B, and C each 5%.

One section tournament

6 Rounds

Med, Solk, S-B Tiebreaking

T.D. William Blackmore

2814 Grove Street

Bellingham Wash.

OREGON CHAMPIONSHIP

July 31-Aug 1 &

August 7 and 8

Entrants: Dalbergs, G. Kern  
 D. Moore, L.Karell  
 D. Turner Def. Champ  
 C. Kelleker, J.Wolfe  
 V. Bricker

Story next issue!

by Gregory Kern

N. W. INVITATIONAL TNY.

December 31, Jan. 1 & 2

(tentative)

The tournament idea in most cases seems to be well received thus far. If we can raise a decent prize fund I'm sure it will rank among the successful tournaments of the year. The prizes will not be very large, but there will be no entry fee, and we will try to pay each visiting player a retainer fee to defray traveling expenses, and also furnish a trophy. Jim McCormick has offered to give a simultaneous to increase the tny fund. Gregory Kern

## THE 1965 ASHLAND OPEN CHESS FESTIVAL

Our tournament this year will be held in Lithia Park at the extreme upper end. Signs will be in place. Enter the park through the downtown plaza and then come to the upper end, clear past the deer park.

It will be a five round swiss affair with Harkness pairings and Solkoff - Median tie breaking.

There will be a Championship and a reserve section. USCF members only in the championship section with the reserve section being limited to those having a rating of 1799 or less.

First Prize - \$100 plus trophy guaranteed by Ashland C.C.

Second " - some cash plus trophy

Third " - some cash plus trophy

Reserve Section

First Prize - trophy only

Second " - trophy only

Third " - trophy only

Best Woman - trophy

Best Junior - trophy

All trophies have been donated by local merchants and this leaves all \$\$\$ from entry fees for prizes!

Time Limit: 50 moves in two hours the first day to get through in time for those that care to, to attend the Shakespearean plays. For the second day the time limit will be 40 moves in two hours and 20 each hour thereafter. Several upset prizes have been donated.

Entry Fee: \$5.00 for championship section and \$3.50 for juniors.

In reserve section will be \$3.50 and \$2.00 for juniors. (under 18)

The Ashland Club will handle the hotel and motel reservations, if the players care to have us do so, the same as last year. This is a busy season at the Shakespeare Theatre and motel reservations will be hard to get the day of the tournament, so if you plan to come and can, please let us know so that we can get something for you. Some of the motels have given rate deductions for chess players and family.

We have reserved 30 seats a night at the Shakespearean plays for the use of the chess players at \$2.00 each, however, it will be necessary for us to know about reservations on these before August 1.

Friday August 20 Macbeth

Sat. 21 Winter's Tale

Sun. 22 Henry the Sixth - Part II

Mon. 23 Much Ado About Nothing

If the families of the chessplayers care to picnic in the Park, a local restaurant has offered to put up lunches for those that want them. Chicken, potato salad, etc.

We will take entries to 8:30 a.m. Sat. August 21 and play will start at 9:00 sharp. Advance entries are welcome and if something forces a last minute change in your plans, we will refund your money.

### CHESS MASTER TO VISIT ASHLAND

William Addison, 6th ranked U.S. Chess Master, will visit Ashland, July 18 for a simultaneous exhibition that will be held in Lithia Park, at 2 P.M. Mr. Addison is one of the foremost chess teachers in the U.S. and was youth director at the Piatagorsky Foundation in Los Angeles.

He was the best performer on the 1964 U.S. Olympic Team, scoring 87%, and at 30 is the new director of the Mechanics Institute Chess Room, the oldest chess room in the U.S.

# TOURNAMENT NORTHWEST BY BUZ EDDY

In 1953 KENNETH HARKNESS, the late business manager of the United States Chess Federation, published in the Blue Book the "Harkness" pairing system. This system has been followed by most tourney directors in this country, including your writer. A simple grasp of this system might be presented in likening to an elimination tournament seeding system. In any pairing group the highest rated in the top half will play the highest rated in the lower half.

For the initial round of an event it is relatively easy as the entire field is handled as one pairing group. However, some confusion arises in subsequent rounds regarding precisely how the new pairing groups are formed and handled.

One point that might be clarified here is that once players of a pairing group are ascertained they are ranked in that pairing group by rating order without regard to score.

When an odd number of players appear in a score group, the middle ranked player is moved to the next score group toward the middle, (i.e.  $1\frac{1}{2}$ - $1\frac{1}{2}$  after three rounds), and ranked with that group in rating order.

The Harkness concept is not only to produce a tournament winner, but at the completion of an event have all of the participants results reflect their playing strength during that tournament.

Although the Harkness system is relatively clear in most cases do arise requiring director judgement. Your writer paired the 1964 Seattle Open final round in the manner he felt was most consistent with the ideas of the Harkness system. He later wondered about this, and two months after the event presented the data to two Oregon T. D.s, and received not one but two pairings different from his own. It is

still difficult to determine which set of pairings was most consistent with the system.

Prior to the advent of the Harkness treatise much swiss system pairing was done by lottery. Harkness spent much time berating this pairing system, and it soon lost its widespread support. Your writer agrees with most of Mr. Harkness' objections to the lottery pairing system.

In the 1964 Inland Empire Open, directed by Dr. Griffiths Parker a pairing idea new to your writer was utilized. Dr. Parker paired the first two rounds according to the Harkness system, and then paired the subsequent rounds by matching players in each score group with the closest ratings.

Although this idea does not fully meet the Harkness concept of attempting to have final scores reflect strength in an event, it does have the distinct advantage of permitting a player four possibly five games that are not foregone conclusions, instead of the usual one of two, as in a pure Harkness paired event.

Your T. D. liked the idea and with the simple modification of retaining the Harkness system for the two top score groups, utilized the system in the 1965 Inland Empire Open. Unfortunately the event was not numerically large enough to reflect any perceptible difference, but we still think the idea has considerable merit.

We intend to utilize this system in the 1965 Seafair Open. We feel that an opportunity to play more chess among equal competition will be a welcome relief from the hectic "Harkness" schedules of other Seattle events.

\* \* \* \*

In glancing through the June issue of "Chess Life" your writer found some twelve tournaments scheduled for July and August that require a \$10 or higher entry fee plus USCF and local memberships. Some of these events guarantee up to \$200 1st prize, and class prizes commensurate with the fund. These tournaments included among others the Vermont Open, the Atlanta Open, the Missouri Open, and the Rocky Mountain Open (Phoenix).

Chess has grown to this scale in all parts of the country, and to provide the



# MCCORMICK - PUPOLS WIN 1965 SEATTLE OPEN

JAMES McCORMICK, of Seattle, won the 1965 SEATTLE OPEN with a  $4\frac{1}{2}-\frac{1}{2}$  score. He won the Seattle City Championship title by finishing with one full tie-breaking point more than second place VIKTORS PULS, of Seattle, who also posted a  $4\frac{1}{2}-\frac{1}{2}$ .

This event was one of the stranger chess tournaments directed by your T. D. The first round saw LEWIS RICHARDSON, of Camas, hold McCormick to a draw. In this game McCormick had to force a perpetual to keep his game from deteriorating to a loss. Not to be outdone in anything by McCormick, Pupols found himself in an inferior position to NORMAN ABRAHAMSON in the second round and drew by perpetual.

ANDY SCHOENE, of Seattle, had to go them one better. At the fourth move of his third round game against KENT PULLEN, Schoene appeared to have a clear advantage, if not a win. But when the smoke had cleared from the time-control scramble, Pullen had found a time-pressure combination that turned the game in his favor. Your TD then handed Pullen the envelope to seal a move for adjournment, whereupon Schoene announced his resignation. He had mistakingly thought Pullen could seal a mate in one.

In the final round McCormick turned in a very fine game against Pullen. After wild no-holds-barred opening Pullen resigned after 18 moves. Few of the spectators could follow McCormick's forced continuation from the final position, but it was a clear forced win.

Besides his first round draw with Richardson, and his final round win from Pullen; McCormick posted wins over RON SMITH, of Aberdeen, (Smith won their 1st encounter at the Grays Harbor Open); N. Abrahamson, and WILLY BRANDAL, of Seattle. Brandal dumped McCormick in last years Seattle Open. Gentleman Jim concluded this game with the comment "Lightning never strikes twice, Brandal, you've had

your win over me for this lifetime."

Third place money was shared four ways by Kent Pullen, last years winner COLIN AYKROYD, Andy Schoene, and N.W. Jr. Champion Jerry Wolfe, of Troutdale, Ore. Each finished the tourney with a 4-1 record.

The class "A" prize was won by Pullen, class "B" by Ron Smith at  $3\frac{1}{2}-1\frac{1}{2}$ , and class "C" by Canadian Chess Chat editor, ROBERT D. ELDRIDGE. ROD DUNN, of Edmonds, took the unrated honors.

The event was played at Seattle's Hotel Roosevelt, on July 10-11. Because of room reservation conflict only two rounds were played Saturday, but this did not seem to effect participation as all 32 entrants completed their full schedule.

The time-control for the tournament was 45 moves in two hours, and the clock took its usual toll in the event. Besides the already mentioned Schoene - Pullen game, and the Abrahamson-Pupols game, where the perpetual was forced under time-pressure; time as a determining factor in the fourth round Holzinger-Dunn game, Dunn losing on time, and in the fifth round Pupols-Holzinger encounter in which Holzinger lost on time.

The thirty-two man field was comprised primarily of Seattle players, with 17 from Seattle, and all but three from within a 100 mile radius.

As mentioned the tournament room was not available Saturday evening, so the new Seattle Chess Club quarters were procured to play adjournments from the first rounds. As it turned out the only adjourned game was the first round Pullen-Olson match, and Olson after doing a little endgame research resigned the game by telephone.

Tournament director for the event was Buz Eddy, assisted by Willy Brandal, Peter Olson, and Tony Marsland. Marsland handled the event, while Eddy was at the WCF meeting.

SUMMARY of the  
1965 SEATTLE OPEN

Player	Home	-1-	-2-	-3-	-4-	-5-	Score	Med.	Solk.
1. James McCormick	Seattle	D25	W7	W8	W16	W3	4½-1½	9	
2. Viktors Pupols	Seattle	W13	D16	W25	W6	W9	4½-1½	8½	
3. Kent Pullen	Seattle	W32	W19	W5	W4	W1	4 - 1	10	
4. Colin Aykroyd	Vancouver BC	W15	W12	W10	L3	W17	4 - 1	9	
5. Andy Schoene	Seattle	W27	W11	L3	W20	W8	4 - 1	8	
6. Jerry Wolfe	Troutdale	W19	W17	W18	L2	W10	4 - 1	7½	
7. Ronald G. Smith	Aberdeen	D17	L1	W22	W19	W16	3½-1½		
8. Willy Brandal	Seattle	W23	W14	L1	W11	L5	3 - 2	10	
9. Robert Holzinger	Seattle	W21	L18	W14	W12	L2	3 - 2	8	
10. Matt Kenney	Seattle	W28	W29	L4	W18	L6	3 - 2	7	13
11. Joseph Toth	Seattle	W22	L5	W21	L8	W25	3 - 2	7	12½
12. Rod Dunn	Edmonds	W20	L4	W28	L9	W24	3 - 2	7	12
13. Dave Fulton	Tacoma	L2	W26	L16	W23	W21	3 - 2	6	12
14. Ernest Prentice	Tacoma	W31	L8	L9	W28	W18	3 - 2	6	10
15. Randy Dean	Olympia	L4	L30	W26	W29	W20	3 - 2	4½	
16. Norman Abrahamson	Seattle	W26	D2	W13	L1	L7	2½-2½	11	
17. Dennis Corpus	Seattle	D7	L6	W29	W25	L4	2½-2½	9	
18. Dr. J. Roskam	Bellevue	W30	W9	L6	L10	L14	2 - 3	9	
19. Stephen Christopher	Bothell	L6	L3	W31	L7	W30	2 - 3	8½	
20. Eddie Sonier	Seattle	L12	W23	W30	L5	L15	2 - 3	8	
21. John Walker	Bothell	L9	W31	L11	W30	L13	2 - 3	7	
22. Robert D. Eldridge	Vancouver BC	L11	W27	L7	L24	W31	2 - 3	6½	11
23. John Pericich	Tacoma	L8	L20	W27	L13	W29	2 - 3	6½	10½
24. Mike Farkas	Seattle	L29	L28	W32	W22	L12	2 - 3	4	
25. Lewis Richardson	Camas	D1	W32	L2	L17	L11	1½-3½	10	
26. Robert Lundin	Issaquah	L16	L13	L15	D27	W32	1½-3½	7	
27. Lyman Johnston	Tacoma	L5	L22	L23	D26	W28	1½-3½	5½	
28. John Shoemaker	Tacoma	L10	W24	L12	L14	L27	1 - 4	8	
29. Lauren Owens	Seattle	W24	L10	L17	L15	L23	1 - 4	7½	
30. Bruce Morris	Seattle	L18	W15	L20	L21	L19	1 - 4	6	11
31. Richard Murray	Seattle	L14	L21	L19	W32	L22	1 - 4	6	9
32. Peter J. Olson	Seattle	L3	L25	L24	L31	L26	0 - 5		

northwest player with at least one tournament of this type your TD and WCF President CLARK HARMON are designing the 1966 Washington Open along these lines. Entry fee \$10.00 plus memberships. First prize guaranteed \$125, more if entry warrants. Class prizes \$15.00 and \$7.50, 1st and 2nd. Again more if entry warrants. Cash prizes down to at least 5th place, probably more. Trophies for each class and for the winner.

Your T.D. believes that chess is thriving in the northwest, and that an event of this nature is helpful to all levels of competitive chess.

Somewhere in the back of our mind is the dreamy glint of making this a nationally attractive tournament, with the national masters bucking heads against our local hopefuls. Maybe someday? (SEE YOU AT THE TOURNAMENTS- Buz)

# N W

# GAMES

Mr. Addison - J. Lazos

Since Addison recently gave a simultaneous at Ashland the following example may give the readers a sample of his skillful attacking play. This game was played when Addison won the strong Steiner C.C. Championship in L.A. last winter. (Gregory Kern)

- |          |      |          |       |
|----------|------|----------|-------|
| 1. P-K4  | P-K4 | 2. P-K34 | PxP   |
| 3. N-KB3 | P-Q4 | 4. PxP   | N-KB3 |

One of several popular methods of meeting "The Draughted King's Gambet", as one Argentinian acquaintance of mine used to say; by which eh meant "dreaded"!

5. B-N5ch B-Q2?

But this move isn't very popular; white maintains material equality and may get a powerful pawn phalanx surging down the center of the field. 5...P-B3 is better.

6. BxPch QxB

7. P-Q4 B-M4

Further loss of time 7...P-B3 ought to be tried.

- |          |        |
|----------|--------|
| 8. P-Q4  | B-N5ch |
| 9. N-B3  | O-O    |
| 10. N-K5 | Q-K2   |

Black now is already losing a pawn.

11. O-O P-B4

Desperately trying to break the bind, but the pawns hold firm and the light calvary moves up to sweep the foe off the field.

- |           |       |
|-----------|-------|
| 12. BxP   | PxP   |
| 13. N-B5  | QN-Q2 |
| 14. N-Q3! | B-R4  |
| 15. N-Q6  | B-B2  |
| 16. N-B5  | Q-Q1  |
| 17. P-Q6  | B-N3  |
| 18. P-QM4 | Q-N1  |

Even Black must have laughed at this one. At least he still has a back rank to re-treat to.

- |               |                 |               |         |
|---------------|-----------------|---------------|---------|
| 19. P-B5      | B-Q1            | 20. Q-B3      | THE END |
| if 20...P-KN3 | then 21. N-K7ch | and 22. B-K5! |         |

- |          |         |
|----------|---------|
| 20....   | P-QR4   |
| 21. P-N5 | R-R2    |
| 22. P-R6 | Resigns |

The following letter is in response to the suggestion by Mr. Salberg's about players sending in their favorite games. Ed.

The following win was lifted from the scrapbook of a friend who is now a familiar figure in northwest tournaments. The game was actually played at first board in a Portland high school match some time ago. The names have been changed to protect the loser; and will remain changed to protect my friend, as long as the payments keep coming on time. Mr. Clay R. Kelleher.

- |          |      |         |     |
|----------|------|---------|-----|
| 1. P-QB4 | P-K4 | 2. P-Q4 | PxP |
| 3. QxP   |      |         |     |

...avoiding 3. N-QB3 PxP 4. Q-Q5 PxP the Dangerous Gambit.

- |         |       |         |      |
|---------|-------|---------|------|
| 5.      | N-QB3 | 4. Q-Q1 | N-B3 |
| 5. P-K4 | NxP   | 6. Q-K2 |      |

Brilliant! Black might try 6...P-Q4 7. N-B3 and if Black tries to defend with 7...P-QR3 white has 8. BxN N-Q5 9. N-B6mate!

8. Q-K2

7. P-B3 N-Q5?

Threatening to blow the two knights for a rook, giving Black an endgame advantage, providing he can win one of the knights back by then.

8. QxP BxPch???

Removing the guard.

9. BxN????

Fortunately, his opponent didn't see it either.

- |           |       |          |        |
|-----------|-------|----------|--------|
| 9.        | QxQch | 10. B-K2 | B-N5ch |
| 11. N-B3  | BxNch | 12. P-B3 | Q-B7   |
| 13. P-QR3 | QxP   |          |        |

At this point, White came up with a cunning scheme. Black had failed to call check in time and thus put White under no obligation. Since Black could not produce a Blue Rook to help his argument, White had created time to play the salvaging move: 14. R-QM1.

14. B-B2

Hoping Black might try 14...N-Q1 calling check.

- |           |     |           |
|-----------|-----|-----------|
| 14.       |     | QxB       |
| 15. K-B2  | O-O | 16. QN-K1 |
| 17. N-K5? |     | QxP       |

Now Black wins back his knight.

- |          |        |          |       |
|----------|--------|----------|-------|
| 17.      | Q-B4ch | 18. N-B3 | QxN   |
| 19. N-Q3 | Q-B3ch | 20. K-B3 | P-QN3 |
| 21. N-B1 | Q-Q3ch |          |       |

Evidently Black believes in the principle of quick development, otherwise he would have done this on move 20.

- |            |       |
|------------|-------|
| 22. R-B4   | QxBch |
| 23. R-B5   | QxP   |
| 24. R/3-B3 |       |

Seizing one of his open files by doubling the rooks..... a plus!

- |          |        |
|----------|--------|
| 24.      | B-B2   |
| 25. R-K7 | Q-B6ch |

Black misses his big chance: If instead 25...P-NM4 26. BxQP Q-R5 mate.

26. R/7-K3 QxRch

This loses material. Big Deal.

- |         |       |          |
|---------|-------|----------|
| 27. BxQ | KN-K1 | 28. R-Q3 |
|---------|-------|----------|

At this point let us analyze: Though White's king and rook have great freedom of mobility, Black's bishop exerts tremendous pressure on White's king side, his rooks are preventing



first rank vulnerability, and he also has a queen side majority. Therefore, though Black's queen pawn is in jeopardy, his middle game, at the moment, appears to be in better shape than White's endgame.

29.K-K2 P-Q4 23. P-Q4  
 31.R-Q3 R-K5ch 30.P-Q3 P-Q5  
 32.K-B5 R/1-K1  
 33. BxP

One last pitfall: If 33...R-Q1 White can force mate, Black can find the right continuation.

33. R/1-K1 mate  
 Anyone for a guess as to who is the author of the black pieces?

THE POSTAL AGE IS AT LAST DEMYSTIFIED!

Seiter 2055 - Morris 2245

1.P-K4 P-K4 2.P-K4 P-Q4  
 3.P-Q4 -K33  
 This is supposed to "bust" the King's Gambit, but Fischer says not.  
 4.P-Q3 P-B3  
 5.P-Q3 P-Q4 6.PxP P-Q4  
 7.P-Q4 B-Q3 8.K-K2 O-O  
 9.BxP B-Q1 10.P-Q3 R-K1ch  
 11.K-K2 P-Q3

Black's last move is his own. Book says that K-K2 gives Black excellent attacking chances. Fischer has analysis to show K-K2 is not so good. See April Issue Chess Life "Fischer talks Chess." 1964

12.O-O O-B5  
 13.Q-Q2 B-Q1 14.P-Q3 P-Q4  
 Black has embarked on a deliberate plan of trade off.

15.R-Q3 B-Q3 16.B-Q1 Q-Q2  
 17.R-Q3 P-K5 18.B-Q1 B-Q1  
 19.R-K3 P-Q4 20.R/1-K1 P-Q5  
 21.Q-Q2 B-Q1 22.P-Q3 P-Q2  
 23.P-Q3 B-Q3 24.R-Q1 P-Q4

Black should have played 24...R-Q3, P-Q4 loses a pawn.

25.Q-B5 R-Q3 26.P-Q4! P-Q5  
 27.B-Q1 K-R1 28.P-Q5 P-Q6  
 of course not 28...B-Q1 29.B-Q1 or 29...B-Q1  
 29.Q-Q4 B-Q3 30.Q-Q2 P-Q1  
 31.R-Q2

Therefore 31...P-Q4 is useless 32.K-Q1 R/1-Q5  
 33.P-Q3 B-Q1 34.Q-Q2 Black's attack has come to a halt and White's queenside pawns will advance decisively.

31. R/5Nch! 32.P-Q3 Q-Q5  
 33.B-Q1

The only move to save himself. If 33.Q-Q2 B-Q1 34.R-Q1 R-Q7 or 33.K-Q2 B-Q1 34.

Q-Q8ch R-1

33. B-Q1 R-Q4 34.Q-Q6ch R-Q2

Drawn by perpetual check.  
 We wish to thank Mr. Morris for giving the readers an insight into the type of play that goes on in events other than tournaments at the local club or hotel etc. We hope that the readers will use these games with other articles in this magazine to improve their game. We will be glad to answer any and all questions that the readers would like to send Mr. White to your editor.

Danny Byrne - Jim McCormick  
 1962 The Dallas Open

1.P-K4 P-K4 2.P-Q3 P-Q4  
 3.P-Q3 P-K5 4.P-Q3 P-Q5  
 5.P-Q2 P-Q4 6.P-Q5ch K-B1  
 7.P-Q4 P-Q4 8.P-Q5 P-Q3  
 9.O-O P-Q3 10.Q-Q3 P-Q3  
 11.P-Q3 P-Q2 12.P-Q4 P-Q4  
 13.P-Q3 P-Q3 14.R-K1 P-Q2  
 15.P-Q3 P-Q3 16.P-Q6ch K-Q2  
 17.P-Q5ch K-Q3 18.P-Q4 P-Q3  
 19.P-Q3 Q-Q2 20.P-Q5ch K-Q2  
 21.P-Q6ch K-Q1 22.R-Q2 P-Q1  
 23.Q-Q2 K-Q2 24.R-K3 P-Q1  
 25.Q-Q3 P-Q1 26.P-Q4 B-Q1ch  
 27.P-Q3 P-K1 28.P-Q6 P-Q1ch  
 29.P-Q3 B-K3 30.B-Q1 P-Q4  
 31.P-Q2 P-Q1 32.P-Q5 Q-K1  
 33.P-Q6 B-Q1 34.P-Q7 K-Q2  
 35.P-Q4 Q-B1 36.P-Q4 P-Q5  
 37.P-Q6ch K-R1 38.P-Q7 P-Q1  
 39.P-Q7 B-Q1 40.P-Q7 P-Q6ch  
 41.P-Q2 B-Q1 42.P-Q1 P-Q6  
 43.P-Q4 P-Q4 44.K-Q2 P-Q6  
 45.P-Q5 P-Q5 46.P-Q7 P-Q1  
 47.Q-Q6ch Q-Q2 48.Q-Q8ch Q-Q1ch  
 49.Q-Q5 mate

WONDER!!

Jim McCormick has signed a contract to the effect that he will annotate a game for each of the next five issues of the N.C.S. "to the best of my ability."

Jeff Holmes one of our postal players has asked why does the Sch-Becker postal game in the June N.C.S. have two !! after the second move by White.

This is in tribute to John Reh and his persistence with this Black-Bar-Diemer Gambit and for the more frequent wins he has been having. His enthusiasm has spread to Matt Kenny one of the Nordic and Richard Lamond so far.

"CHESS"

The following is a sample from the English magazine "CHESS". 1 yr \$5.50 4 yrs. \$18.00.

Geller - Smyslov 5th

The 5th game of their recent match for the candidates crown as reported by Russell in his Chess Chats.

1.P-Q4 N-K3 2.P-QB4 P-KN3  
3.N-QB3 P-Q4

Characteristically, Geller now opts to accept the challenge of the Gruenfeld, occupying the centre with pawns as the basis for a king's side attack which wins the game long before Smyslov is able to attack the white centre and even longer before Black's queen's side pawn majority becomes even the semblance of a balancing factor.

4.PxP BxP  
5.P-K4 N-N 6.PxN B-N2  
7.B-QB4 P-QB4 8.N-K2 O-O  
9.Q-O N-B3 10.B-K3 Q-B2  
11.R-B1 P-Q1 12.P-B4 P-K3

12...N-N4 is better, and if 13.B-Q3 P-B4 12...B-N5 once feared, proves inadequate against 15.P-B5 e.g. 13...BxN 14.QxB PxP 15.PxQP PxQP 16.PxP! or 13...PxEP 14.BxPch! and if 14...KxQ then 15.Q-N3ch P-K3 16.N-B4 Q-Q2 17.KPxP BxP 18.BxP!

13.K-R1 P-N3 14.P-B5 N-R4

But now 14...N-K4 seems better: this leaves Black's king's side rather unprotected.

15.B-Q3 KPxP 16.KPxP B-N2  
17.Q-Q2 R-Y1 18.N-KN3 Q-B3

A time-wasting move 18...QR-Q1 would have been better.

19.R-KB2 QR-Q1 20.B-KR6 B-KN1  
21.Q-B4 B-Q2

Not 21...PxQP? 22.PxNP  
22.N-K4

Geller conducts the attack beautifully. 21...PxQP would again lose, by 22.PxNP RPxP (not 22...BxP? 23.Q-B3ch) 23.N-B6ch BxN 24.QxB mating.

22. P-B5??

A poor, nervous move, abandoning for nothing his counter-play in the centre, been based on the threat of ...PxNP and an eventual ...N-B5. From now on, Black is in the doldrums.

23.B-B2 R/Q2-K2 24.R/QB1-KB1!! RxB  
25.PxP!! P-N3

Or 25...Rxd 26.PxP mate

26.Q-N5! Q-Q2

27.K-N1

It is said that 27.PxP dbl ch followed by 28.Q-B5ch would have won even more quickly. Readers may enjoy working out the possibilities. The move played is good enough. Smyslov was in time trouble for Geller, nothing loath to rush him, moved quickly himself.

27. B-N2 28.BxP! R-N5?

White's main threat is 29.B-N7  
If 28...BxR? 29.QxB Q-K2 30.Q-Q7ch wins.  
Or 28...BxR? 29.QxB PxP 30.BxPch K-N1 31.B-N5 and Black is helpless.  
Or 28...R/K1-K2 29.R-B3ch  
Or 28...R/K5-K2 29.PxPch K-N1 30.R-B3ch  
On 28...BxB 29.QxB suffices.

So, though this loses at once, there was not much to be done.

29.PxPch K-R1 30.BxPch QxB  
31.QxN! Resigns

If 31...QxQ 32.B-B3ch mates.

June Chess 1965

Next issue a reader comments:

According to Leonard Barden in the Guardian, Simagin claimed that Smyslov should have played 19...PxP 20.QxB PxP 21.PxP BxP 22.Q-Q2 Qxch 23.QxQ BxP and "with rook, minor piece and pawn for the queen Black has good chances of saving the game."

On the contrary, it seems clear to us that Black's position is hopeless, because of 24.Q-R6!

This threatens 25.P-B6 and 26.Q-N7 mate.

If.. 24...B-N4 25.N-B5! wins (25...PxN 26.P-B6 or 25...B-N1 26.N-B3ch or 25...B-Q5 26.P-B6)

If.. 24...B-Q5 at once, 25.PxP! RxB 26.PxP! BxB 27.BxPch K-R1 (27...B-N2? 28.N-B5 or 27...K-B1 26.Q-Q6ch) 28.Q-B5ch K-N1 29.Q-Nch etc.

Black hasn't a hope in the ending with an exposed king and only B, N, and two pawns against queen and three-bishops include two united passed pawns.

This is a monthly magazine with about 32 pages per issue. It lists many of the books that are listed in the NCL at about the same price, (plus or minus 10¢).

a sample of the list of magazines that can be purchased through either your editor or this source.

Shakmaty - Russian \$4.15  
Shakmaty Bulletin-Russian 5.55  
British Chess Magazine 5.25

add 25¢ for bank handling for a subscription to any of the above periodicals. Ed.

SEATTLE CHESS CLUB NEWS

VISIT THE SEATTLE CHESS CLUB!!

Speed Tournament Fri. July 2nd 1965

1. Svend Conrad	11-0
2. Eugene Fomin	10-1
3. John Garrott	8-3
4. Norman Abrahamson	7-4
5. Earl Wilson	6 <sup>1</sup> / <sub>2</sub> -4 <sup>1</sup> / <sub>2</sub>
6. Fred Howard	6 <sup>1</sup> / <sub>2</sub> -4 <sup>1</sup> / <sub>2</sub>
7. Stephen Christopher	4 <sup>1</sup> / <sub>2</sub> -6 <sup>1</sup> / <sub>2</sub>
8. Bryson Smith	4-7
9. Dick Dorwin	3 <sup>1</sup> / <sub>2</sub> -7 <sup>1</sup> / <sub>2</sub>
10. Philip Cois	2-9
11. Ray Potteete	2-9
12. Brian Sherlock	1-10

John Garrott reports that the previous months speed tourney was won by Svend Conrad followed by Earl Wilson, Gene Fomin & John Garrott in that order.

Top Ten on Perpetual Ladder at S.C.C.

1. Svend Conrad	619
2. Eugene Fomin	601
3. Fred Howard	555
4. Gerrit Zwoers	542
5. Stephen Christopher	540
6. Norman Abrahamson	530
7. Frank Al. andro	523
8. John Garrott	503
9. Don Cameron	500
10. Brian Sherlock	494

On July 2nd Norman Abrahamson concluded a six game match for U.S. rating points by defeating John Garrott by the somewhat conclusive score of 5-1.

Gene Fomin defeated Stephen Christopher 1-1-<sup>1</sup>/<sub>2</sub>-1-1 for a score of 4<sup>1</sup>/<sub>2</sub>-<sup>1</sup>/<sub>2</sub> for north-west rating points.

JAMES SCHMITT WRIES

I want to have a complete line of the S.C.C. and N.W.C.C. so I am in the market for issues for the last half of 1964.

Maybe someone could be persuaded to part with some?

I hope to be able to spend a little more time on chess in the near future. Job hasn't permitted it the last couple of years. I did play at Santa Monica 7-2-65 and did quite well, considering. James Schmitt 1121 N. Gordon Apt 10, Hollywood Cal 90038

The club is all settled in it's new quarters at 766 Thomas Street. This is a 3 story house with lots of room, even has a telephone WA 2-3532. All we need is lots of new members. Have lots of parking space.

Fred Howard

For those of you who are able, don't miss Friday nights at the chess club. At the Seattle C. C. there is always something going on, from speed tourneys to serious matches.

John Garrott

SOME GOOD ENGLISH BOOKS

* Reti - Masters of the Chess Board	2.75
* Minzovitch - My System cloth	2.80
<u>Fine - Chess The Easy Way</u> paper	1.00
Dr. Lasker - Lasker's Manual of Chess paper	2.00
Ed. Lasker - Chess Strategy paper	1.50
Reti - Modern Ideas in Chess paper	1.25
Fine - Basic Chess Endings cloth	6.50
* Alekhine - My best games 1908-23	2.00
* cloth 1924-37	3.20
* Clarke-Petrosian's Best Games cloth	3.80
* Clarke - Tal's Best Games of C.	3.25
* Reshevsky - How C. Games Are Won cloth	2.75
* Smyslov - My Best Games 1935-57 cloth	5.20
Minzovitch - The Practice of My System	2.00
Nottingham 1933 - Alekhine's notes	1.85
Hastings 1895 - Notes by players	2.00
N.Y. 1924 - Alekhine's notes paper	1.85
Soviet School of Chess paper	2.00
Morphy's Best Games - Sergeant paper	1.75
Knoch-Rubinstein's C. Masterpieces	1.25
Boinfield-Tarrasch's Best Games	2.00
Marshall's Best Games - Marshall paper	1.45
Boinfield-Keres' Best Games paper	1.35
Reshevsky's Best Games by Res paper	1.25
Botvinnik-100 Selected Games paper	1.50
Sergeant - Championship Chess	
World Champ Games paper	1.35

\* indicates 50¢ additional needed per order to cover overseas bank charges.

Send order to Richard J. Parsons, editor

CHESS CLOCKS

Brown Plastic	
including duty & postage	13.00
airmail	15.50
Swiss	
including postage	17.00

The latter clock is of a much finer quality, and it is the only chess clock that replaces damaged movements.

## SYNOPSIS OF CHESS PROMOTION - JOACHIM

Part I) To promote chess, it appears imperative for chess in the community at large (I), to organize clubs (II), and provide for adequate competition within and between the clubs (III).

I. To arouse interest, at least one chess enthusiast is needed in each district, enumerated under chapter III, -who is willing to spend time and efforts. His activity will consist of contacting all chessplayers known to him personally or through the WCF by mail or telephone and approach the public. An announcement of a simultaneous chess exhibition combined or folled by a tournament, appears to be a recommendable starting point. The announcement should be made in the local newspapers, YMCA and clubs. These announcements should be prepared by the Wash. State Chess Federation in advance, inviting for a complimentary meeting. The exhibition should be held in the town's outstanding hotel - which usually does not charge for rent, or at the YMCA or library. - A second, however, less recommendable possibility of promoting this initial meeting, is to join forces with a local charitable organization. A small amount should be charged as admission, the charity should get the monetary benefits, while the chess group should get the ideological advantage of publicity. The simultaneous player, however, should give the performance on a voluntary basis or should be sponsored.

II. Organization of the club: When interest is aroused, all the participants on this meeting, whether players or not should be listed by name, address and phone number, and should be invited to a club tournament to be held in the near future. Attempts should be made, to secure a room in the library or the YMCA for this tournament. During this tournament social games should not be discouraged, but should be restricted to a minimum, otherwise club-life will fall apart.

### III. Arranging competition:

a) within the club. The club leader should not get discouraged by a nominal start. Six people are usually a very good start. Competition is as necessary in chess as in business life. A tourney should be started. A round robin tournament is preferable to the Swiss system or to an elimination tourney, because it enables the clubleader to start the essential club rating system. Each player starts with 1100 points, 2 points are added for a win, one point for a draw. No deduction is made for a loss. This has the

advantage, that it does not discourage the weaker players into losing confidence and prevents them from becoming chess-delinquents and drop-outs. In a tournament each player shall receive besides 2 points for each win and one point for the draws, also as many points as his final rank at the end of the tourney indicates. For instance: In a tournament in which 30 participated, the winner shall receive 30 points, the second (runner-up) will receive 29 points etc.. ) Perpetual tournaments or ranklists and challenges are also to be recommended.

b) Between clubs: To organize competition in chess statewide, the State of Wash. should be subdivided into 8 leagues:

1) The Puget Sound League, embracing the following counties-King, Pierce, Snohomish, Skagit and Whatcom.

2) The Peninsular League-including all counties located on the Olympic Peninsula.

3) Southwestern League-all counties S. of Pierce county.

4) North Cascades League-Kittitat, Douglas, Chelan and Okanogan counties.

5) South Cascade League: Yakima and Kittitas counties.

6) Empire State League: Spokane, Lincoln, Pend Oreille, Ferry Stevens.

7) Desert League: Grant, Adams, Franklin and Benton.

8) Snake River League: Walla Walla, Columbia, Garfield, Asotin and Whitman

Many cities should have an option of participation. Olympia and Fort Lewis may participate in the Puget Sound and/or the Southwestern League.

Bremerton: on the Peninsula and/or Puget Sound.

Shelton and Aberdeen: on the Peninsula and or Southwestern.

Yakima may also play in the Northern Cascade league.

Kittitas may play in the S. Cascade L.

Chelan Empire State League or Desert L.

Richland and Pasco Snake River League.

Whitman County Empire State League.

Each league shall be organized for the purpose:

1) To form chess teams within the league.

2) To organize competition between the teams within the league on a round robin basis.

3) Shall determine the winner and have it participate on an allstate competition, to take place in Seattle at the Seafair at the City Center, on the weekend, not occupied by the Seafair Open Tournament.

Each team shall consist of 5 players.

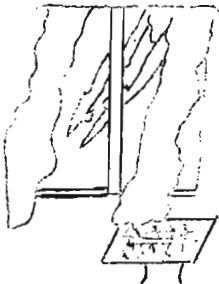
Respectfully submitted - Joachim

He stood up, looked out the window. The rain was dull and monotonous. There was no breeze to make the rain bounce and splatter off the concrete below. The Hotel Rand sign flashed below and he noticed a sports car hydroplaning its way down the street. He turned away from the window, glanced at the clock on the bedside table, and sat on his bed in front of a chair on which he had his chessboard. The clock said 8:15 and he thought of his hunger. He had not eaten since breakfast. He dismissed the thought and returned to the chessboard. He was working on a new variation. He removed from a pile of books and magazines copies of "Shakhmaty" and "Chess Archives" and some of his own scribbled notes.

He was working on an innovation that he would play in tomorrow's tourney. However, there was a continuation that was bothering him. It was unlikely that anyone would play that particular line, he thought, but I would like to know the best move just in case. He went through numerous variations, continuations, and games. He analyzed and he studied. But he was still worried about that sub-variation.

His hunger pains soon disappeared, but fatigue set in. He noticed that himself. He pulled out the bottle of beer he was saving for tomorrow and gulped that down. It helped him to stay awake for a little while, but he soon succumbed. Still dressed he crawled in bed and was soon fast asleep.

During the night the wind picked up and blew the rain actions took clouds. The but a thundering storm was the region. wind burst open window. flashed and kled. Then a voice was heard.



around. Ionic place in the rain stopped, and lightening-blown into A gust of through the Lightening thunder crackled.

"Lance, Lance wake up," the voice said.

Lance stirred, turned around and looked up. His heart skipped a beat as he gulped, "Who...who are you?"

"Glad to see you are awake. You would not believe the hard time I had awakening you. Such rudeness after calling me."

"I called you?" Lance mumbled.

"Of course, don't you remember," the strange man replied.

"No, but who are you?"

"Persistent aren't you? You can call me Mr. Lucifer,"

"All right Mr. Lucifer. What do you want and why are you in my room?"

"Now let's not get upset. Don't forget it was you who requested that I come."

"I did not ask you to come here, — it," retorted Lance.

Mr. Lucifer looked puzzlingly at Lance. He turned around and looked out the window. Another gust of wind blew. Again lightning flashed and again thunder crashed. He said, "In your dream you wanted to know the answer to a question. And I thought my services could be used."

Lance did not move. But he realized what Mr. Lucifer was talking about. His heart jumped twice before he was able to speak again. "Do ... do you play chess?"

"Why, of course. I'm a very good player, if I do say so myself. I have played games and matches with many of the world's best players. You know Morphy was sensitive and couldn't stand to lose. Alekhine, you will remember, made the first comeback of any world champion. I'm sure you have heard of my foul encounter with Capablanca in Havana that was reported in 'Chess Review' a few years ago."

Lance, deep in thought, glanced around the room and pointing to the chessboard by the bed said, "I have a question in that position."

Mr. Lucifer blinked as the hotel sign flashed on. "Is that all you wish? I mean some people do request more."

"All I am asking you is if you know what Black should do to prevent this combination and not weaken his Queen side. And I am not offering anything in return—namely my soul."

Mr. Lucifer looked down at the floor and said, "I'm sorry. It looks like we will be unable to do business. That is, unless you decide to change your mind."

Lance slid down from his sitting position and replied, "Good-bye," and rolled over.

Again a gust of wind blew through the open window. Lightning again flashed and the thunder bolted and shooked the whole hotel, room, chair, and bed, as if it reflected the temper of the devil.

Lance stirred at the awesome noise and glanced at his chessboard. The chesspieces jumped and moved in rhythm to the noise. A Knight fell over and rolled a few squares. Then the noise stopped, and Lance returned to his sleep. And then it donned on him. The Knight! That was the move! A devilish move at that.



# N.W. RATINGS

BY FRED HOWARD

This quarterly report contains 247 players 1 N.W. Master, 11 Experts 37 Class A, 95 Class B, 67 Class C and 36 Class D. This also has the Boise Chess Club Championship, Abrahamson vs Garrott and Eddy vs Fulton.

## N.W. Master 2200 - 2399

Schoene, Andy Wash. 2236

## Experts 2000 - 2199

Alberston, Bruce Fort Lewis 2014  
Aykroyd, Colin B.C. 2087  
Byron, Fred F. Jr. Oreg. 2019  
Harmon, Clark R. Wash. 2196  
Hunt, Stanley Utah 2061  
Kern, Gregory Oreg. 2066  
McCormick, James Wash. 2146  
Nettleton, Frank Oregon 2001  
O'Gorman, Peter Wash. 2041  
Saez, Ruben Oreg. 2042  
Vandenburg, Dick Idaho 2144

## Class A 1800 - 1999

Abrahamson, Norman Wash. 1879  
Adams, Doug Wash. 1882  
Barto, John R. Mont. 1859  
Brandal, Willy Wash. 1931  
Buckendorf, Glen Idaho 1841  
Campbell, Jim Wash. 1920  
Chappuis, Gaston B. Utah 1991  
Clark, Farrell L. Utah 1960  
Corey, Donald Wash. 1859  
Cornelius, Gordon Wash. 1985  
Cowan, Eugene L. 1908  
Docekal, Fred Utah 1861  
Dolph, Phil Oregon 1893  
Ellis, A.B. Idaho 1905  
Fisher, James Utah 1927  
Fomin, Eugene Wash. 1852  
Freimann, Gerald Utah 1840  
Freling, Roger Idaho 1909  
Grannis, Dave Wash. 1939  
Harris, Dee Idaho 1901  
Hart, Kay R. Idaho 1905  
Hartwell, Ted Idaho 1852  
Kenney, Matt Wash. 1890  
Kimpton, Lloyd E Idaho 1917  
Laakso, Val Nev. 1861  
Marsland, F.A. Wash. 1811

## Class A Continued

Mitchell, Robert A. Oreg. 1884  
Morrow, Hans Utah 1862  
Nettleton, Tim Oreg. 1819  
Pullen, Kent Wash. 1955  
Rasmussen, Ernst Wash. 1848  
Sage, Leon L. Oreg. 1953  
Sudborough, Dana Oreg. 1868  
Tyler, John Fort Lewis 1858  
Walloch, Dr. Antonie Wash. 1933  
Yee, Joseph Wash. 1815  
Zwan, Cornelius Utah 1831

## Class B 1600 - 1799

Alexandro, Frank J. Wash 1690  
Almond, Dr. John C. Wash. 1795  
Anderson, Phil Idaho 1701  
Archbold, John Utah 1773  
Barney, Dave Oreg. 1771  
Barr, V.B. Utah 1714  
Bayless, Jack McNeil Isl. 1798  
Beach, Dr. Douglas Oreg. 1725  
Beardon, Tracey Oreg. 1736  
Betzler, Bruce Oreg. 1674  
Bigley, Jack Wash. 1717  
Blackmore, Wm. Wash. 1731  
Boehm, George Wash. 1616  
Brandt, Larry Wash. 1796  
Carlson, Carl E. Wash. 1789  
Cillis, Daniel Oreg. 1792  
Cosho, John Idaho 1686  
Cross, Dr. Graydon Idaho 1658  
Dalley, Darrell Idaho 1709  
Davis, Bob Wash. 1691  
Davies, Delmer Idaho 1626  
Dean, Randy Wash. 1745  
Eddy, Buz Wash. 1677  
Espey, Rodney Idaho 1729  
Everett, Miles Oreg. 1628  
Flood, Carl Wash. 1785  
Fulton, David Wash. 1752  
Garrott, John Wash. 1628  
Halabrin, Mike Wash. 1727  
Hall, Edgar Utah 1627  
Hansen, Dennis Utah 1732

Class B 1600 - 1699

Harris, C.E. Idaho 1649  
 Hashisaki, Peter Wash. 1606  
 Haugen, Dave Wash. 1764  
 Hayek, Richard Wash 1663  
 Henry, Lewis Wash 1681  
 Herbers, Pat Wash. 1664  
 Hoxsie, Gordon Utah 1698  
 Huffman, Dave Oreg. 1623  
 Imber, Arthur Utah 1652  
 Jackson, J.C. Idaho 1700  
 Joslyn, Spencer Idaho 1618  
 Kittredge, Robert F. Wash. 1692  
 Knapp, Earl Wash. 1639  
 Lanza, Lawrence McNeil Isl. 1762  
 Lee, Norman Idaho 1624  
 Mack, Bernie McNeil Isl. 1782  
 Marino, Albert Oreg. 1628  
 McClintock, Wayne Utah 1652  
 McDaniel, C.C. Utah 1765  
 McKaig, Wesley Oreg. 1729  
 Memmott, ? Idaho 1786  
 Miller, G.L. Wash. 1668  
 Miller, Russell Wash. 1734  
 Miller, Winton Oreg. 1628  
 Mitchell, James Oreg. 1739  
 Monahan, Darby Wash. 1623  
 Moore, Andy Oreg. 1627  
 Murphy, Don Idaho 1778  
 Neilson, Doug Idaho 1701  
 Ney, George McNeil Isl. 1795  
 Nilsson, Sven Utah 1754  
 Nowak, Bob Wash. 1605  
 Parker, Roy S. Idaho 1602  
 Parr, Larry Wash. 1662  
 Parrish, Stan Oreg. 1628  
 Pericich, John 1676  
 Petrich, Mark Oregon 1628  
 Powell, Jack Oreg. 1713  
 Prentice, Ernest Wash 1726  
 Prince, Lawrence G. Idaho 1701  
 Rambo, Gene Idaho 1643  
 Richardson, Lewis Wash. 1730  
 Rightmier, Bill Oregon 1628  
 Sandberg, Sandy Oreg. 1771  
 Scott, Larry Oreg. 1698  
 Shephard, John Oreg. 1633  
 Shropshire, Dick Idaho 1627  
 Skirmants, Nick Idaho 1705  
 Smith, Ed Idaho 1701  
 Smith, Larry Wash. 1619  
 Stanke, Jerry Idaho 1785  
 Sund, Ed Wash. 1611  
 Therkelsen, Eric U of W 1758  
 Trainor, Ray Wash. 1679  
 Turner, Norval Utah 1658

Von Schmidt, James Idaho 1795  
 Walker, John Wash. 1642  
 Waterman, Vic Idaho 1619  
 Watt, Gary Idaho 1626  
 Wennstrom, Max Idaho 1725  
 Wheeler, Ray Nev. 1749  
 Wickberg, Gary Idaho 1743  
 Williams, Dave Wash. 1730  
 Zwitzer, Col. Martin Oreg. 1731

Class C 1400 - 1599

Arnold, Ed Wash. 1544  
 Ault, Gary Wash. 1531  
 Beale, Mike Oreg. 1467  
 Beardon, Kitty Oreg. 1560  
 Benson, Steve Oreg. 1578  
 Bertram, Cal Jr. Wash. 1590  
 Blake, Brent Idaho 1501  
 Bosse, Col Edward Wash. 1478  
 Brock, Fred Wash 1591  
 Cavin, Richard Oreg. 1505  
 Chapin, Billie Oreg. 1468  
 Chapin, Ned L. Oreg. 1413  
 Chinn, Wayne Wash. 1498  
 Dickson, Bert Oreg. 1586  
 Dolph, Hazel Oreg. 1594  
 Espey, Sunny Lou Idaho 1597  
 Everett, Arthur Oreg. 1559  
 Freeburger, Frank A. Oreg. 1525  
 Freimann, Alfred Utah 1517  
 Gingrich, Clifford E. Oreg. 1423  
 Gingrich, Margie M. Oreg. 1521  
 Glidden, Charles Oreg. 1466  
 Graff, Barney Idaho 1527  
 Grant, Barry Oreg. 1520  
 Hagy, Charles Wash. 1465  
 Hendry, Arnold Wash. 1431  
 Hill, Bruce Oreg. 1468  
 Horn, Ben Oreg. 1549  
 Hughes, Bill Wash. 1511  
 Hueston, Steve Wash. 1481  
 Johnson, R.R. U.of W. 1548  
 Kaffenberger, Henry Wash. 1597  
 King, Dan Jess Idaho 1538  
 Klaus, Del Idaho 1598  
 Labos, Raymond Oreg. 1569  
 Lindow, Bill Oreg. 1468  
 McCabe, W.L. Nev. 1445  
 McLepd. Bruce Wash. 1564  
 Myers, John Idaho 1454  
 Nelson, Allen Wash. 1431  
 Nelson, Robert Wash. 1502  
 Olson, Don Wash. 1508  
 Price, Gary Wash. Ft. Lewis 1466

RATINGS CONTINUED

Class C 1400 - 1599

Priebe, George W.	Wn.	1517
Ransibrahmanakul, Guy	Wn.	1405
Razor, George	Ida.	1564
Reid, Dave	Ida.	1433
Reid, Joe	Wn.	1573
Rice, Scott	Ore.	1460
Schimke, Wm.	Ida.	1465
Solts, Carl M.	Ida.	1487
Spangenberg, Cecil	Ida.	1460
Street, Bob	Wn.	1453
Struble, Robert	Wn.	1572
Thompson, Edward	Utah	1518
Thompson, Horton F.	Wn.	1567
Trout, Lewis	Ida.	1566
Turk, Steve	Wn.	1494
Vroman, Richard	Wn.	1591
Whitaker, Glen	Nev.	1413
Wick, Art	Wn.	1598
Wilbour, Don	Wn.	1473
Wilke, Brian	Wn.	1418
Wilson, Stan	Wn.	1463
Woolley, Frank	Ore.	1468
Worth, W.J.	Ore.	1532
Zboralski, Ed	Ore.	1531

Class D 1400 & Lower

Anstey, Paul	Ida.	1332
Baldwin, Frank	Ida.	1300
Ballantice, Cornelius	Wn.	1387
Barney, Carline	Ore.	1271
Broad, Lawrence	Wn.	1111
Cavin, Yvonne	Ore.	1203
Chinn, Howie	Wn.	1351
Cruthers, David	Ida.	1200

Tournament Directors please send in the results of Interstate Open and Montana State Open so they can be published and rated.

ABRAHAMSON - GARROTT

Norman Abrahamson defeated John Garrott 5-1 in a match played July 2nd for N. W. rating points.

FULTON - EDDY

David Fulton, author of Northwest Chess-board, defeated our Northwest Tournament Director Buz Eddy 2-0 in a match for rating points.

Conley, Sam	Ore.	1287
Dean, Sam	Ore.	1148
Dorfner, ?	Wn.	1238
Fjellanger, Lee	Wn.	1275
Glidden, Harry	Ore.	1353
Greer, Mike	Ida.	1306
Hazelton, Ron	Ore.	1319
Jensen, Earl	Ida.	1100
Johnes, Bill	Ida.	1100
Johnson, Bill	Ore.	1319
Kirby, Grant	Ore.	1287
Krommerhock, John	Ida.	1200
Lundin, Robert	Wn.	1395
Martin, Cliff	Ore.	1148
Martin, Jerry	Ore.	1308
McCormick, Francis	Ida.	1390
McLeod, Scott	Wn.	1382
McPheeters, Roger	Ida.	1301
Merrick, R.	Ida.	1319
Molson, Eric	Wn.	1088
Morris, Bruce	Wn.	1345
Nelson, Zyril	Ida.	1301
Parrish, Nathan	Ore.	1308
Puz, Don	Wn.	1327
Rasmussen, Oscar	Wn.	1372
Rhodes, Tommy	Ida.	1100
Robinson, Lonie	Ore.	1287
Rogers, John	Ore.	1191
Schroeder, Steve	Ore.	1308
Shaw, Steve	Ida.	1400
Spencer, Robert	Ida.	1200
Swendt, David	Wn.	1378
Swenson, Jay	Utah	1386
Tedrick, Ray	Ore.	1287
Trevenna, George	Ida.	1200
Turner, James	Wn.	1328
Wilson, Dwight	Ore.	1308

CANYON COUNTY CHESS CLUB CLOSED

1 Roy S. Parker	N	W2	W3	W4	W5	W6	5
2 Dan J. King	H	W4	W5	W6	L1	L3	3
3 Jerry E. Stanke	N	W2	W4	W7	L1	L5	3
4 Steve Shaw	N	W5	W6	L1	L2	L3	2
5 Vic Waterman	B	W3	W7	L1	L2	L4	2
6 Carl M. Solts	N	W7	L1	L2	L4	LF	1
7 Marvin Mellinger	N	L3	L5	L6	LF	LF	0

N-Nampa H-Huston B-Bowmont (Idaho)

The above is the cross table of the recent tournament held in the Christensen Community Center in Nampa Idaho on Saturday June 26, 1965 during the afternoon.

Here are more results from the Candidates matches. Former world champion Mikhail Tal of Latvia defeated Lajos Portisch of Hungary  $5\frac{1}{2}-2\frac{1}{2}$ . Tal won 4 games lost only 1 and drew three. The first two wins of Tal were the type of games one expects him to play. He sacrificed material to bring about his attacks to which Portisch could not find a refutation. Tal's final wins in the last games of the match were positional struggles in which Tal outplayed Portisch. Tal is his old self again.

Bent Larsen of Denmark leads Boris Ivkov of Yugoslavia  $4\frac{1}{2}-2\frac{1}{2}$  with three games yet to play. Larsen started with a fine win then a 31 move draw, a win due to a blunder of Ivkov's and another win to lead  $3\frac{1}{2}-\frac{1}{2}$ . But the next two games were draws while the 7th game was the first win for Ivkov. If Larsen can get 1 pt out of the next three games he will be paired against Tal. Their styles are somewhat similar and it should be an interesting match, but I pick Tal to win. That would set up a 12 game match between Boris Spassky and Tal to decide the challenger to World Champion Tigran Petrosian. My two picks for the Challenger are still in the running. I had been saying for the last two months Tal would have a rough time with Portisch, but he sure proved me wrong.

Arthur Bisguier, one of the USA grandmasters, took top place in the Pacific and Southwest Open Championship played on the 4th of July weekend in Santa Monica. He scored  $6\frac{1}{2}-\frac{1}{2}$  while at 6-1 was Carl Pilnick. Charles Henin, Joe Mego and Jim Schmitt (a former Northwest player) tied for third  $5\frac{1}{2}-1\frac{1}{2}$ . Among those tied at 5-2 were Jerry Hanken and Paul Quillen both known by several Northwest players. There were 81 players, 5 were rated masters and 23 experts. That is all the results so far of the many 4th of July tournaments, if any one knows of others, send them in.

Grandmaster William Lombardy was in Southern California giving a number of simultaneous exhibitions. In one he was to play 10 masters and experts simultaneously with clocks on the games.

Bilek won the Hungarian Championship. Balcerowski won the Polish Championship. S. H. Petersen won the Danish Championship.

The results of the Third European Team Tournament which took place in Hamburg, W. Germany in June. (1) USSR 66pts. (2) Yugoslavia 57 (3) Hungary 57 (4) W. Germany 45

(5) Roumania  $41\frac{1}{2}$  (6) Holland  $33\frac{1}{2}$ . More on this next month.

Robert J. Fischer is pictured on the cover of the July Chess Review with the title "Fischer Returns". He played against members of the UN Chess Club. He was also interviewed on T.V. This is the first I have heard of Fischer in some time. He lost two games and drew one winning 22.

Frank RePass won the Louisiana-Mississippi Open ahead of A.L. McAuley in a 22 man field. Ours is not the only area that has some small turnouts.

I would like to hear from some of the readers, I assume that somebody is reading this column, if you like this type of news.

For a starter your editor wants to thank Russell's Chess Chats for the prompt and rather complete news of chess in other parts of the globe. I am sure that there are others who don't have the resources or time to go through many publications to find out what is happening and are glad to find a column like this to bring them up to date. Thanks again Russell.

ARIZONA POSTAL MATCH

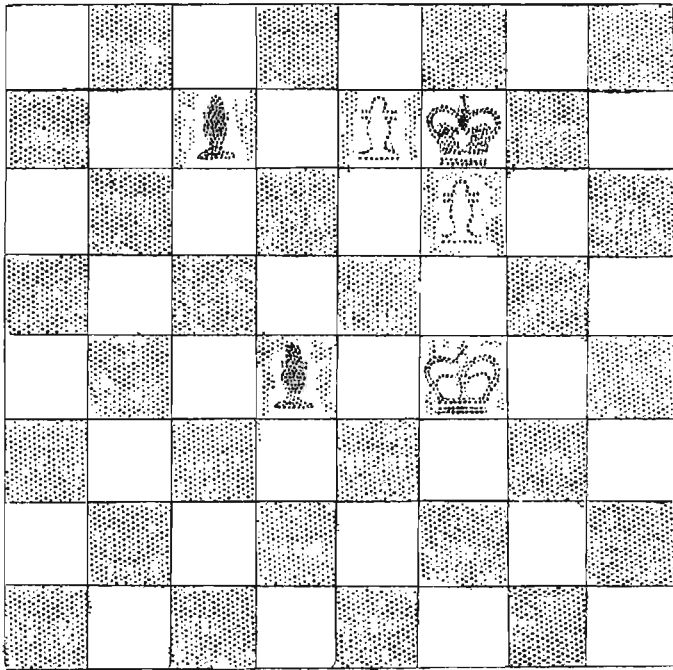
1. Morris	2243!!!	AA
2. Blackmore	1496	A
3. Denison, Mrs.!	1085	C
4. Webb	1158	B
5. McCord	1000	C

Finally obtained a willing "B" player, but he had to win enough games to be promoted to do it!! This match will be starting shortly, if any others are interested, contact your editor.

N.W. POSTAL CHAMPIONSHIP

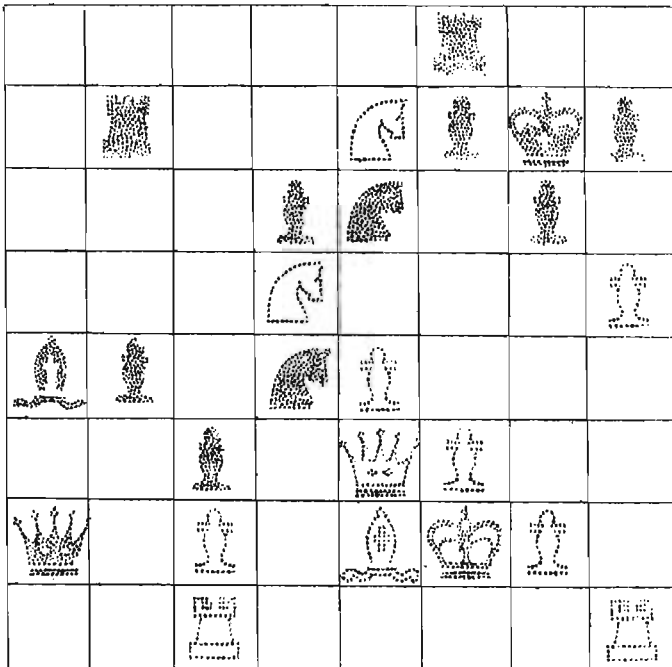
Mr. Harmon explained that if any player entering more than one section should be fortunate enough to score the required % in each section, he would advance to the next section in part II this many times. In other words if you win two sections you will advance twice, but only the highest final score of the more than one that you may have will be accepted for the list of prizes given out.

Your editor just received his two sections that he had entered for, so if you want to get in on the ground floor, write to Clark Harmon now! Remember "C" players are competing against "C" players.



Either side moves and White wins!

Dave Fulton sent in the above problem and thought he would give you a break. You can start by moving either the White or Black men but White will be victorious in either case. About the longest line is 8 moves. It has one main theme throughout. From Selected Endings by Norman T. Whitaker & Hartleb.



White to move and mate in 9

This is exactly how you would like to end your game against McCormick! Lauren Owens

Mr. Joachim thinks he might have a possible win for black in this problem. If Mr. Joachim or any other reader can find a win for Black your editor will give a \$1 prize for the first response received. It must be admitted that most of the solution to the June problem was worked out by the editor in reply to the new move 4...K-N4! sent in by Mr. Vandenburg. The original solution given on page 98 of Chessboard Magic by Chernev (Dover Publication \$1.00) gives only 4...P-B5 which is a much weaker reply by black.

July Problem

An excellent solution to this problem was sent in by the author of Northwest Chessboard Mr. David Fulton. (A) indicates the author (F) indicates Fulton's analysis.

1.K-N4 K-N1 a, c 2.K-B5 K-B2 3.K-Q6 K-K1 d 4.P-B5! K-Q1 forced 5.P-B6!! Pxp stalemate (A) (F).

- a 1...P-Q4 2.Pxp Pxp 3.K-B5 draw (F)
- 1...P-Q3 2.K-R5 P-Q4 b 3.Pxp Pxp 4.K-N5 draw (F)
- b 2...K-R2 3.K-N5 etc P-Q4 is never good because White can always win it and protect his other pawn in time. (F)
- 2...P-B4 draws to 3.K-N5 (F)
- 2...K-N1 3.K-N6 P-Q4 4.Pxp Pxp 5.K-B5 K-B2 6.Kxp K-B3 7.K-K4 draws (A)
- c 1...K-R2 2.K-B5 K-R3 3.K-Q6 K-N4 4.Kxp Kxp 5.Kxp P-N4 6.K-N7 draw (F) (A) the pawns queen at the same time.
- d 3...K-B3 leads to note c.

BOISE DEFEATS CANYON COUNTY

Boise	W9	W6	L7	2-1
1 Wicksberg	W9	W6	L7	2-1
2 Skirmants	W10	W8	L6	2-1
3 Lee	L6	W7	W8	2-1
4 Joslyn	L8	W10	W11	2-1
5 DeWinter	L7	L9	L10	0-3
Canyon County C.C.	N	W3	L1	W2
6 Cross	N	W3	L1	W2
7 Waterman	B	W5	L3	W1
8 Stanke	N	W4	L2	L3
9 King	H	L1	W5	1-1
10 Parker	N	L2	L4	W5
11 Shaw	N		L4	

N-Nampa B-Bowmont H-Huston

Played the evening of June 26, 1965, in the Christensen Community Center, Nampa.



SWAP SHOP

This month we list opening books only, in future issues there will be lists on some other aspects of the games. If there are any readers interested in a review of some book please let the editor know. Books that have an (\*) beside them need an additional \$ .50 per order to cover banking charges. These are ordered from abroad.

(G) indicates German

(H) Hungarian

(R) Russian

(E) English & without symbol implied

Theory of the Openings - Euwe (G)

\*1-2 Queen's Gambit (G) 1957-111p 1.65

\* 3 Slav, Q.G.Acc., Albin, Colle, etc. (G) 1960 1.65

\*4-5 Indian Defences (G) 1959-232p 2.25

\*6-7 Budapest, Catalan, Dutch, Benoni, Reti, etc. (G) 1965 4.65

\* 8 Caro Kann, French (G) 1960-148p 1.70

\* 9 Sicilian, Alekhine, Pirc etc 1961-176p 2.25

\* 10 Ruy Lopez, 3&4 Knights etc 1962-224p 3.00

\*11-12 2 Knights, Giuoco, Petroff, Evans, King's Gam., etc. (G) 1956-152p.1.65

\*Sokolsky-The Opening 1.P-QN4 (G) 208p 2.05

\*Sokolsky-Manual of the Chess Openings (G) 464p 3.30

\*Diemer-Blackmar Gambit (G) 191p 3.00

\*Schwartz-The Sicilian Defense (G) 587p 6.75

\*Schwartz-English Opening (G) 300p 4.40

\*Schwartz-The Bird's Opening (G) 158p 2.00

\*Schwartz-The Dutch Defense (G) 392p 5.10

\*Schwartz-The Classical Q Gambit(G) 324p 2.80

\*Schwartz-The Nimzo Indian (G) 452p 7.50

\*Pachman- 1.P-K4 P-K4 Openings (G) 390p 3.30

\*Pachman- 1.P-K4 various replies(G) 400p 3.30

\*Pachman- The Queen's Gam. etc. (E) 3.40

\*Fanov-Course of the Openings (H) 372p 3.75

\*Modern Chess Openings-Evans 10th ed. below

\*Horowitz-Chess Openings Theory and Practice 789p11.25

\*Barden-The Ruy Lopez 170p 2.00

\*ZnoskoBorovsky-How to play the Chess Openings 200p 3.15

\*Barden-A Guide to Chess Openings 238p 3.80

\*Fine-The Ideas Behind the Chess Openings cloth 2.10

paper (no 50¢ reqd.) 1.65

\*Golombek-Modern Chess Opening Strategy 3.90

\*Euwe-Chess Archives (English!) lyr. 6.30

Folder to hold them in 1.25

Horowitz-How to Win in the Chess

Openings paper 1.00

Chernev-Winning Chess Traps(300)paper 1.95

Horowitz-Modern Ideas in the Chess

Openings paper 1.00

\*Taimanov-Nimzo Indian (G) 2.40

\*Gunderam-New Opening Ways (G) 2.50

If you are interested in any of the above books, send a check to the editor Richard Parsons. Expect a possible 3 wk delay for the European books, possibly 2 wks for the American ones.

This service is available to only members of the N.W.C.L. If it is found you are not a member your check will be returned. Join now while the dues are still only \$2.00 a year! This is about you only chance before the deadline on Sept. 1, 1965.

MODERN CHESS OPENINGS 10th ed.

American Edition less 10% 8.75

\*European Edition 6.30

The choice of edition is up to the reader, a little explanation, however, is needed in order to make an intelligent decision.

The American edition is selling at \$9.75 in the US, but I have been able to get a 10% discount for the readers of the N.W.C.L. so it is available for \$8.75.

To obtain the European edition will cost \$ 6.30 plus 50¢ for the order to cover the banking charges. In addition to this it is very important to note that the covers on the European books are not anyway near the American ones. If you are going to be using this book for several years expect it to be cracking at the back in not too long due to constant use and the inexpensive binding. On the other hand, I have found that an American book such as Practical Chess Openings has lasted for years and the binding is yet in excellent condition. I ordered both A & E editions of MCO 9th ed. and I noticed that the American one has lasted considerably longer. You will find this also with the books published by the Russians and other Slav countries. Now you make the decision!

In either case this edition will have in excess of 500 pages and it has been revised to bring it up to the current tournament play. Evan's himself claims to have doubled the contents of previous editions by writing more compactly.

If the reader is interested in a particular book (there are many more on the openings alone!) or if a book is in existence on a particular subject, just drop a line, I have about \$2,000 worth of chess books.

\$100

# 1965 NW POSTAL CHAMPIONSHIP

\$100

First Prize	\$ 50
Second Prize	\$ 20
Third Prize	\$ 10
Fourth Prize	\$ 5
Fifth Prize	1 yr. subscription, NWCL
Sixth Prize	1/2 yr. subscription, NWCL

## Class Prizes for:

### CLASS "A"

First Prize	\$ 5
Second Prize	1 yr. subscription, NWCL
Third Prize	1/2 yr. subscription, NWCL

### CLASS "B"

First Prize	\$ 5
Second Prize	1 yr. subscription, NWCL
Third Prize	1/2 yr. subscription, NWCL

### CLASS "C"

First Prize	\$ 5
Second Prize	1 yr. subscription, NWCL
Third Prize	1/2 yr. subscription, NWCL

Prizes will be awarded on the basis of the three round total score. If a tie for first occurs, a tie-breaking match will be played to determine the champion. Ties for other prizes will be broken by Sonneborn-Berger points.

It is a three round tournament with 5-player sections, two games with each opponent.

Assignments made as entries are received.

In the first round each win counts 10 points, each draw 5 points. Players who score 50 points in their section ( out of 80 possible ) advance free of charge into round two.

In the second round each win counts 15 points, each draw 7.5 points. Players who score a round one and round two total of 125 points advance free of charge into the final round.

In the third round each win counts 20 points, each draw 10 points. Highest point scorer at the end of three rounds is declared champion. Best score attainable is 360 points.

The entry fee is \$2.50. With payment of entry fee, player is entered in one section;

additional sections cost \$1.00 each. Subscription to NWCL is required of all participants.

No entries or additional sections accepted after Dec. 15, 1965.

## RULES:

- 1) The NW Postal Championship is open to all irrespective of class or locale.
- 2) Although a player may enter more than one section (maximum of 6), only one prize is allowed per contestant.
- 3) A player who qualifies to compete in more than one section will be awarded his prize according to the highest score achieved among his multiple entries.
- 4) Players with a postal rating in class "A" at the date of their entry will be eligible for class "A" prizes, regardless of their rating at the conclusion of the tournament. Similarly, this applies to class "B" and "C" players.
- 5) Players with no postal rating will be considered eligible for class "A" prizes if their NW rating is in class "A", class "B" prizes if their NW rating is in class "B", class "C" prizes if their NW rating is in class "C" or lower.
- 6) If NW ratings are unavailable, USCF ratings will be used for class prize eligibility. Players with no rating will be eligible for class "C" prizes.
- 7) All participants are eligible for the main prizes irrespective of their rating class.

## TOURNAMENT DIRECTOR:

Clark Harmon  
304 Garden St.  
Renton, Wn. 98055

For more information you can call Clark Harmon at AL 58047 in Renton.

# ENTER NOW



To hold down the work load that will confront Bob Merk after his convalescence from a long siege in the hospital, we have omitted the invitation to form new sections during this next month, after assigning 24 players who have waited longest. Remaining entry credits of Vanatta, Skarsten and H. Glidden have been tentatively entered as subscription extensions at the present lower price that is in effect until September, but these credits can, of course, be drawn back when Merk gets under way. In line with this stand-by decision, prizes for the apparent winners of the following sections are subscription extensions. Kirk got a new section for winning 64B9.

63A8 Seiter	64A7 Holmes	64B7 Hainsworth	64C1 Fay
83B7 Lyberger	63A3 Wick	64B2 Skiles	64C2 Becker
83A13 Prentice	64A15 Morris	63C8 Reid	64C8 Becker
64A2 Prentice	64B9 Dean	63C9 Cyr	64C3 Shives

Some games remain in progress in the above sections, for the rating points, but will not affect the top scores. Ties were broken by adding the points won and giving the nod to the player who gained the most.

Game reports should be made as usual to Bob Merk, and the rating list will be revised each month until he is able to invite new entries. Players wanting immediate action are urged to join the Prize Tournament that is being conducted by Clark Harmon, and advertised elsewhere in this issue.

Following are the July reports:

Clayhold forfeits in 64B2, 20 points for Turner, 10 each for Skiles and Baskett. Credit Prentice 34 points, debit Kern, because of double report of 64A12A in May.

Vanatta draws for 21 points with H. Raymond in their Match

Parsons	wins	14	from	J. Holmes	in	Match
Rudzitis	"	66	"	Parsons	"	64A14B
Pattie	"	36	"	J. Olson	"	65C3B
Pattie		37		Puz		64C9A
Pattie		37		Puz		64C9B
Becker		60		R. Raymond		65B4A
Donnelly (draws)		10		Dale Olson		64B11B
Hainsworth	wins	51		Youngman		64B7B
Hughes		50		Richard Davis		65B5B
Carroll		55		Glidden		65B1A
Carroll		55		Glidden		65B1B
Dean		30		Henry		64B9B
Kourse		51		Weaver		64A15A
Weaver		70		Harmon		64A5B
Morris		10		J. Schrader		64A16A
Prentice		35		Fulton		64A12A
Prentice		35		Fulton		64A12B
McFarling		51		Dart		64B3A
Dart		50		McFarling		64B3B
Blosser		62		Denison		64C4B
Keating		46		Denison		65C1A
Denison		51		C. Lamasney		Match
P. Lamasney		22		Denison		64C4A
Carroll		48		Reddig		65B1B
Hughes		40		Davis		65B5A

A brief description of the rating method might answer some questions that have been received. Between equally rated players, 50 points are awarded the winner. For each 10 points difference in rating, 1 point is added to, or deducted from 50, and this is a constantly changing account. For instance, early in July Hughes reported a win from Davis, both rated at 1300. Now Hughes had 1350 and Davis had 1250, so that later in July Hughes gained only 40 points for another win from Davis. The minimum win has been arbitrarily set at 10 points.

# PLAY CHESS BY MAIL

# POSTAL CHESS

## RATINGS

The N.W. Postal Championship and cash are at stake in the sections forming now. Players of all classes meet in a preliminary round. Winners of 5 out of 8 games are advanced at no extra fee to additional rounds. The entry fee is \$2.50 for the first section, and \$1 for each additional section. Send your entry to:  
Clark Harmon  
304 Garden St.  
Renton, Wash. 98055

### "AA" Division Above 1700

Morris	2253
Pupols	2100
Seiter	2035
Parsons	1943
Rudzitis	1918
Wick	1916
Kern	1888
Cummins	1883
Eilmes	1876
Abrahamson	1859
Schmidt	1846
Prentice	1824
Wilson	1813
Knapp	1811
Harmon	1810
Nourse	1766
Hage	1745
Weaver	1745
H. Raymond	1742
Skarsten	1741
Bell	1736

### "B" Division 1100 to 1400

Hughes	1390
Turner	1382
Woodward	1381
Gifford	1359
Rader	1355
Donrad	1347
Grassham	1346
LaVergne	1346
Cassino	1344
Weikel	1342
P. Lamasney	1342
Widner	1340
J. Jensen	1338
Carlson	1336
Baskett	1335
Walker	1326
Useton	1325
Betzer	1321
Dart	1309
Herk	1305
Becker	1302
Grant	1300
Espey	1300
Giden	1300
McFarling	1301
W. Olson	1300
Potter	1300
Stickle	1300
E. Olson	1290
Reddig	1289
Dickson	1283
Laugen	1279
R. Raymond	1278
Henry	1264
Pattie	1254
R.W. Miller	1248
Donnell	1218
J. Donnelly	1212
Davis	1210
Hurley	1208
Gorton	1202
Morris	1198
Reid	1194
H. Glidden	1190
M. Miller	1181
Bauman	1162
Webb	1158
Shives	1154
Dearing	1152
Hainsworth	1139
Keating	1136
Baldwin	1134
Running	1132
Herbers	1108
Fay	1108

### "C" Division Below 1100

Drake	1090
R.M. Taylor	1079
Ward	1067
Williams	1052
Youngman	1050
Blosser	1040
Eorwin	1037
Denison	1020
Buck	1000
R. Cavin	1000
Y. Cavin	1000
C. Gingrich	1000
Kerton	1000
McCord	1000
J. Jones	1000
Knittel	1000
C. Glidden	1000
Holmquist	1000
Klein	990
Puz	974
J. Olson	964
Cyr	962
Moore	956
Bushan	954
C. Lamasney	949
Beers	856
F. Donnelly	844
Cowan	808

### "A" Division 1400 - 1700

Stratton	1696
Skiles	1667
Erickson	1650
Sage	1645
Almond	1642
Holmes	1637
E. Schrader	1600
Colpron	1600
Johnson	1600
Powell	1600
Stough	1600
Scripps	1585
Collins	1575
Brandt	1569
R.G. Smith	1559
Heathman	1554
Person	1554
Christey	1552
Peterson	1544
Vanatta	1535
Fulton	1530
Dean	1519
Nagel	1500
Blackmore	1496
J. Schrader	1460
Kirk	1451
Jones, W.	1447
Lyberger	1445
Reh	1444
Huntington	1436
Howard	1424
Carroll	1408

Results in the N.W. Postal Championship event, directed by Clark Harmon, will be reflected in the list above. A low rated player does not risk many points in meeting a top ranked opponent, but might, with the aid of study and reference books, make a big score. At odds of 10 to 1 in his favor even Class C players can afford to try. At least he will learn something about tactics in the course of the eight games he is assigned. Send your entry to:  
Clark Harmon  
304 Garden St.  
Renton, Wash. 98055

