

WASHINGTON

CHESS

LETTER



MARCH, 1959

Editor D. E. Wade, 11023 25th N. E.  
Seattle 55, Wash.

Circulation R. R. Merk, 1026 East 71st.  
Seattle, Wash.

Treasurer W.H. Raleigh, 4312 Woodland  
Park Ave., Seattle, Wash.

Yearly subscriptions with membership in  
the Washington Chess Federation is \$2.00.

Send subscriptions to the Treasurer. Send  
news stories to the Editor.

OPEN AND CLOSED ARE SUCCESSFUL.

After the most successful Washington  
Open with 50 players we were afraid the  
following Wash. Closed might turn into  
another farce like 1958 and '57. However,  
three of the top five players in the state  
turned out plus four others who were each  
good enough to score  $4\frac{1}{2}$ - $1\frac{1}{2}$  in the Open so  
this year's championship tournament was a  
success. We salute ELMARS ZEMGALIS, our  
new champion, who has repeatedly proved to  
be the best chess player in Washington.

For a change, our champion received a  
fairly good cash prize and deserves to re-  
ceive the championship trophy as well. BOB  
EDBERG donated the trophy stating no one  
could have permanent possession until they  
won it three times. ULVESTAD won it, then  
EDBERG won it in 1957. No one, including  
1958 champion VIESTURS SEGLINS has seen it  
since!

SEE OUR LETTER PAGES!

50 players turn out for a tournament.  
What would happen if all 50 demanded they  
play their first three games right now as  
they wished to devote the afternoon and ev-  
ening to other matters? MR. STRONG writes  
a strong and somewhat amusing letter about  
the recent Wash. Open. He apparently does  
not know that the system he berates is a  
nation-wide system including his own city  
of Portland. True, it is not perfect but  
imagine setting up a 50 player six round  
Swiss with "the luck of the draw" deciding  
one's opponents! The system which he de-  
rides will have to do until a better one's  
devised.

We also have a letter from JACK NOURSE  
on chess in Mexico you may be interested in.

DR. A. A. MURRAY won 2-0 over DAVID  
ERICKSON to wind up North Seattle Tourn-  
ament number 8. The summary follows:

	W	L	D
1. Oliver Morris	L3	W3	W2
2. Dr. A. Murray	L1	D1	W3
3. Daniel Wade	D4	D4	W1
4. Dave Erickson	D3	D3	L1

All games except Murray-Erickson were  
played before the Washington Open.

Tournament number 9 is underway with  
the following scores: WADE 1 MORRIS 0,  
ERICKSON 1 MURRAY 0, MURRAY  $\frac{1}{2}$  WADE  $\frac{1}{2}$ .

WADE WINS 10 MINUTE TOURNAMENT

With clocks set to 10 minutes before  
the hour, DAN WADE won the first North Sea-  
ttle 10 minute chess event. Wade won six  
and lost two. Second went to OLIVER MORR-  
IS with  $4\frac{1}{2}$ - $3\frac{1}{2}$ . No one lost on time!

1. D. Wade	W2	L3	W3	L4	W4	W5	W5	W2	6-2
2. Morris	L1	W4	W4	D3	W3	W5	L5	L1	$4\frac{1}{2}$ - $3\frac{1}{2}$
3. D. Eilmes	L4	W4	W1	L1	W5	D2	L2	D5	4-4
4. Erickson	W3	L3	L2	L2	W5	W5	W1	L1	4-4
5. M. Eilmes	L3	L4	L4	L2	W2	L1	L1	D3	$1\frac{1}{2}$ - $6\frac{1}{2}$

Mary Eilmes drew with Don by repetition  
of moves. Other draws were by agreement af-  
ter all power to win was off the board. The  
event was held Friday evening, Feb. 20th.

HEWITT ELECTED BY  
TACOMA CHESS CLUB

C. R. HEWITT is the newly elected pres-  
ident of the Tacoma Chess Club.

Other officers are: DICK SOMSEN, vice  
president; C. E. CARLSON, secretary; THOMAS  
J. DOLLE, treasurer; VERNON HOLMES, tourna-  
ment director; and JACK FINNEGAN, sergeant  
at arms.

By C. E. Carlson.

MONTANA OPEN MAY 2 - 3.

Secretary JOHN MCKAY BUTLER writes the  
Montana State Chess Association will hold  
their annual Open in Missoula at the Flor-  
ence Hotel. It will be a five round Swiss  
with two rounds on Saturday, May 2nd, and  
three rounds on Sunday, May 3rd. Entry is  
\$3 for seniors and \$2 for juniors. There  
will be a trophies in each of the 3 divi-  
sions - Senior, Class A, and Junior.

# ZEMGALIS WINS 1959

## WASHINGTON STATE CLOSED

by Wade

ELMARS ZEMGALIS, who is no myth as six opponents can testify, won the 1959 Washington State Championship Tournament played on the Washington birthday weekend of Feb. 21-23 at the Seattle Chess Club. Elmars added to his perfect record of never losing in a Washington State tournament and never finishing below first place. He won the state title in 1953 with a 9-0 record, won a Seafair Open-Seattle Championship event a few years ago with  $4\frac{1}{2}-\frac{1}{2}$ , and won a Puget Sound Open once with  $6\frac{1}{2}-\frac{1}{2}$ . In this 1959 championship tournament, Zengalis scored a perfect 6-0. So in 27 state tournament games he is very close to perfection with 25 wins and 2 draws.

In spite of upsets and draws our "fish ladder" on last month's cover was accurate. DON KENDALL and ED DIEDRICH made a determined effort to escape from the bottom of it but failed. Don lost only to Zengalis and Wade and drew all of the others for a 2-4 score while Ed drew three and lost three.

JIM MCCORMICK got second prize money, but ended a country mile behind Zengalis in doing so. He could score only  $3\frac{1}{2}-2\frac{1}{2}$  which ordinarily is not good enough for second.

VIESTURS SEGLINS, 1958 champion, had two wins, two losses, and two draws which was good enough for third place. He lost to the two top players, beat the two middle players and drew the two bottom men.

DAN WADE and DR. A. A. MURRAY ended tied for fourth and fifth slots each having  $2\frac{1}{2}-3\frac{1}{2}$ . Wade beat Murray in the first round but Murray later upset McCormick to regain lost ground.

After the first three rounds, Wade did not have to worry about ending last, having  $2\frac{1}{2}-\frac{1}{2}$ . Then he had to play the big boys with the hairy chests (at least in chess power) and dropped quickly out of sight.

We could bore the reader with dissertations on how we could have easily had draws with Seglins and McCormick if ones brain hadn't turned into plum pudding, but no doubt, the others also had their tearful tales of woe too. We know our pair of wins could easily have been no more in the final standings than draws except for helpful mistakes by our opponents so the books balance.

### BLOW BY BLOW SUMMATION OF TOURNEY.

								W L D	SCORE	
1.	Elmars Zengalis	W6	W2	Bye	W5	W4	W3	W7	6-0-0	6 -0
2.	James McCormick	Bye	L1	W3	W7	L5	W4	D6	3-2-1	$3\frac{1}{2}-2\frac{1}{2}$
3.	Viesturs Seglins	D7	D6	L2	W4	Bye	L1	W5	2-2-2	3 -3
* 4.	Daniel E. Wade	W5	D7	W6	L3	L1	L2	Bye	2-3-1	$2\frac{1}{2}-3\frac{1}{2}$
* 5.	Dr. A.A. Murray	L4	Bye	W7	L1	W2	D6	L3	2-3-1	$2\frac{1}{2}-3\frac{1}{2}$
6.	Donald Kendall	L1	D3	L4	Bye	D7	D5	D2	0-2-4	2 -4
7.	Edward Diedrich	D3	D4	L5	L2	D6	Bye	L1	0-3-3	$1\frac{1}{2}-4\frac{1}{2}$

\* Tied for 4th place.

TOURNAMENT NOTES: Some of the players were unhappy about starting at noon instead of at 9 a.m. since all but Kendall were Seattleites (Kendall is from Tacoma) but no one could know for certain whether or not out of town players would attend. Unaccepted invitations were LAFRENIERE from Yakima, DR. GROENIG from Spokane, and ULVESTAD, PUPOLS & PATTERSON from Seattle. Personal invitations were sent to all eligible. CHARLES JOACHIM would have been a worthy substitute but arrived too late. The Seattle Times gave the tournament good publicity with a picture of KENDALL playing ZEMGALIS as well as 2 stories on the tournament. AL LIVINGSTON & BUZ EDDY did a good job of directing.

# WASHINGTON EXPERTS BEATEN

On Sunday, Feb. 8th, a Washington State master-expert team traveled to Vancouver, B. C. for a return match with British Columbia. The nine-player squad had six players on it who participated in Washington's  $5\frac{1}{2}$ - $2\frac{1}{2}$  victory in Seattle last spring. The B. C. team had the same eight players who lost in that first match plus M. JURSEVSKIS.

Result: British Columbia swarmed over the visitors  $7\frac{1}{2}$  to  $1\frac{1}{2}$ . VIESTURS SEGLINS won on third board and DAN WADE drew on eighth board for all of Washington's score. O. W. MANNEY and CHARLES JOACHIM substituted for JIM MCCORMACK and CHARLES GRIFFITHS who played in the first match. For the first time, JOACHIM lost to a Canadian. He is undefeated in numerous B. C. vs. Washington Internationals. Such reliables as ZENGALIS, ULVESTAD, PATTERSON, and MURRAY also lost. It was supposed to be an eight board match but IKARS CAKARNIS, who went along in case some one was unable to make it at the last moment, ended up playing a ninth board game.

ELMARS ZENGALIS, who won handily over ELOD MACSKASY in the first match, had an even game this time but lost on time. JURSEVSKIS continued his domination of Washington players with a nice win over ULVESTAD on second board.

BRITISH COLUMBIA	$7\frac{1}{2}$	WASHINGTON STATE	$1\frac{1}{2}$
Elod MacSkasy	1	Elmars Zengalis	0
Murvald Jursevskis	1	Olaf Ulvestad	0
Gerhard Neufahrt	0	Viesturs Seglins	1
Jack M. Taylor	1	Charles Joachim	0
Jac Patty	1	G.S.G. Patterson	0
Don Murray	1	O. W. Manney	0
George Zergovich	1	Dr. A. A. Murray	0
Kaj Nielsen	$\frac{1}{2}$	Daniel E. Wade	$\frac{1}{2}$
Frank May	1	Ikars Cakarnis	0

The first master-expert International with British Columbia is now finished. The Canadians are the winners by a 10-7 score. Each team won at home, Washington by a 3 point margin and B. C. by a 6 point margin.

## Some games from the match.

### M. JURSEVSKIS

### O. ULVESTAD

- |          |       |
|----------|-------|
| 1. P-K4  | P-Q3  |
| 2. N-KB3 | N-KB3 |
| 3. N-B3  | QN-Q2 |
| 4. P-Q4  | P-K4  |
| 5. B-QB4 | B-K2  |
| 6. O-O   | P-KR3 |
| 7. R-K1  | P-B3  |
| 8. B-N3  | P-KN4 |
| 9. PxP   | PxP   |
| 10 B-K3  | Q-B2  |
| 11 Q-K2  | N-B1  |
| 12 QR-Q1 | N-N3? |
| 13 Q-B4  | B-K3  |

On move 12 Black should have played R-R2; 13. Q-B4, Q-N1 and Black has much the better game. (Ulvestad)

- |           |      |
|-----------|------|
| 14 N-Q5   | Q-R4 |
| 15 NxNch. | BxN  |
| 16 Q-B5   | QxQ  |
| 17 BxQ    | B-N5 |
| 18 R-Q2   | BxN  |
| 19 PxB    | N-R5 |
| 20 R-Q3   | R-Q1 |
| 21 R/1-K3 | P-N3 |
| 22 RxBch. | BxR  |
| 23 B-Q6   | P-B3 |
| 24 B-K6   | N-N3 |
| 25 B-QN8  | N-B5 |

### M. JURSEVSKIS

### O. ULVESTAD

- |          |       |
|----------|-------|
| 26 B-B5  | P-QR4 |
| 27 R-K1  | R-N1  |
| 28 P-B3  | R-N2  |
| 29 R-Q1  | R-N2  |
| 30 B-Q6  | B-B2  |
| 31 K-B1  | B-Q1  |
| 32 B-QB6 | R-KR2 |
| 33 B-B5  | R-R2  |
| 34 R-Q2  | B-K2  |
| 35 P-N3  | B-Q1  |
| 36 K-K1  | P-R4  |
| 37 K-Q1  | R-KN2 |
| 38 P-KR3 | P-KR5 |
| 39 K-B2  | R-QR2 |
| 40 P-R4  | B-K2  |
| 41 K-N2  | K-B2  |
| 42 K-R3  | R-B2  |
| 43 P-N4  | BxB   |
| 44 RxB   | K-K2  |
| 45 R-Q2  | P-QB4 |
| 46 PxRP  | PxP   |
| 47 R-N2  | P-B5  |
| 48 R-N5  | N-K7  |
| 49 K-N2  | R-B3  |
| 50 RxBP  | R-Q3  |

51 K-B2, R-Q6; 52 R-B5, RxP; 53 P-R5. RxKBP; 54 P-R6, N-B5ch.; 55 K-N1, N-Q6; 56 RxP, R-N7ch; 57 K-R1, R-N3; 58 R-B7ch. and Black resigns.

- |                            |         |
|----------------------------|---------|
| 1. P-K4                    | P-K4    |
| 2. N-KB3                   | N-QB3   |
| 3. P-Q4                    | PxP     |
| 4. NxP                     | B-B4    |
| 5. B-K3                    | Q-B3    |
| 6. P-QB3                   | KN-K2   |
| 7. B-QB4?                  | N-K4    |
| White's 7th loses a tempo. |         |
| 8. B-N3                    | Q-KN3   |
| 9. O-O                     | P-Q4    |
| 10 N-B5                    | PxP     |
| 11 N-R4                    | Q-KB3   |
| 12 BxB                     | QxN     |
| 13 Q-Q4                    | N/2-N3? |

Black should have played N/2-B3 on his 13th turn.

- |         |       |
|---------|-------|
| 14 N-Q2 | Q-N4? |
|---------|-------|

Black sets a trap here but it was not sound. If 15 NxP, N-B6ch; 16 K-R1, Q-R4; 17 PxN, QxPch; 18 K-N1, N-B5 and Black claimed he could have won BUT 19 N-B6ch. saves the game.

- |            |          |
|------------|----------|
| 15 P-KB4!  | PxP e.p. |
| 16 NxP     | NxNch.   |
| 17 RxN     | B-K3     |
| 18 BxB     | PxB      |
| 19 R-K1    | P-K4     |
| 20 Q-Q5    | Q-N5     |
| 21 Q-B7ch. | K-Q1     |
| 22 QxNP    | K-B1     |
| 23 R-B7    | K-Q1     |
| 24 P-KR3   | Q-K3     |
| 25 R-Q1ch. | K-K1     |
| 26 R/1-Q7  | Resigns. |

- |                                |       |
|--------------------------------|-------|
| 1. P-QB4                       | P-QB3 |
| 2. P-Q4                        | P-Q4  |
| 3. N-QB3                       | N-B3  |
| 4. N-B3                        | P-K3  |
| 5. P-K3                        | QN-Q2 |
| 6. PxP                         | KPxP  |
| 7. B-Q3                        | B-Q3  |
| 8. O-O                         | O-O   |
| 9. R-K1                        | R-K1  |
| 10 B-Q2                        | N-B1  |
| 11 P-KR3                       | N-K5  |
| 12 Q-B2                        | NxB   |
| 13 QxN                         | Q-B3  |
| 14 Q-K2                        | N-N3  |
| 15 BxN                         | QxB   |
| 16 K-R1                        | Q-R3  |
| 17 N-KN1                       | B-KB4 |
| 18 P-QR3                       | R-K3  |
| 19 P-QN4                       | QR-K1 |
| 20 P-N4                        | B-N3  |
| 21 Q-B3                        | P-KB4 |
| 22 PxP                         | R-B3  |
| 23 P-K4                        | PxKP  |
| 24 NxP                         | RxBP  |
| 25 Q-N3ch.                     | B-B2  |
| 26 N-B6ch.                     | PxN   |
| 27 RxRch.                      | K-N2  |
| 28 Q-K3                        | BxR   |
| 29 QxB                         | ----  |
| White has no saving move here. |       |
| 29 ----                        | Q-B5  |
| 30 Resigns.                    |       |

From the Washington Open.

- |          |       |
|----------|-------|
| 1. P-Q4  | N-KB3 |
| 2. N-Q2  | P-Q4  |
| 3. P-K3  | P-KN3 |
| 4. P-QB4 | B-N2  |
| 5. KN-B3 | O-O   |
| 6. B-K2  | P-B4  |
| 7. QPxP  | Q-R4  |
| 8. BPxP  | NxP   |
| 9. P-K4  | N-B5  |
| 10 O-O   | R-Q1  |
| 11 B-B4  | N-B3  |
| 12 Q-N3  | N-K3  |
| 13 BxN   | ExB   |
| 14 Q-Q1  | QxBP  |
| 15 P-QR3 | N-Q5  |
| 16 NxN   | QxN   |
| 17 Q-K2  | QR-B1 |
| 18 R-N1  | R-B7  |

White, in this hopeless position, then blundered and immediately resigned. Games like these two and the following one were played at 50 moves in 2½ hours!

- |                                                                                                                                                                  |        |
|------------------------------------------------------------------------------------------------------------------------------------------------------------------|--------|
| 1. P-K4                                                                                                                                                          | N-KB3  |
| 2. P-K5                                                                                                                                                          | N-Q4   |
| 3. P-QB4                                                                                                                                                         | N-N3   |
| 4. P-Q4                                                                                                                                                          | P-Q3   |
| 5. PxP                                                                                                                                                           | BPxP   |
| 6. N-KB3                                                                                                                                                         | B-B4   |
| 7. N-B3                                                                                                                                                          | P-N3   |
| 8. B-K2                                                                                                                                                          | B-N2   |
| 9. B-K3                                                                                                                                                          | O-O    |
| 10 R-QB1                                                                                                                                                         | QN-Q2  |
| 11 P-Q5                                                                                                                                                          | R-B1   |
| 12 P-QN3                                                                                                                                                         | N-K4   |
| 13 N-Q4                                                                                                                                                          | Q-Q2   |
| 14 NxB                                                                                                                                                           | QxN    |
| 15 P-B4                                                                                                                                                          | N/4-Q2 |
| 16 B-N4, BxNch; 17 RxB, Q-K5; 18 B-B3, Q-B4; 19 O-O, N-B3; 20 P-KN4, Q-Q2; 21 P-KN5, N-K1; 22 B-N4, P-K3; 23 PxP, PxP; 24 P-QB5, N-Q4; 25 QxN and Black resigns. |        |

See next page for contrast! ZEMGALIS plays Alekhine's Defense against WADE!



D. WADEE. ZEMGALIS

- |          |       |
|----------|-------|
| 1. P-K4  | N-IB3 |
| 2. P-K5  | N-Q4  |
| 3. P-Q4  | P-Q3  |
| 4. PxP   | KPxP  |
| 5. P-QB4 | N-K2  |
| 6. P-Q5  | N-B4  |
| 7. N-KB3 | B-K2  |
| 8. B-Q2  | O-O   |
| 9. B-Q3? | B-B3  |

White should have played 8. N-B3 and 9. B-K2.

- |          |         |
|----------|---------|
| 10 N-E3  | R-K1ch. |
| 11 B-K2  | N-QR3 @ |
| 12 O-O   | N-B4    |
| 13 R-K1  | P-QR4   |
| 14 Q-B2  | N-K2    |
| 15 N-KN5 | B-B4    |
| 16 Q-B1  | N-N3    |
| 17 N-B3  | Q-Q2    |
| 18 B-K3  | N-Q6    |
| 19 BxN   | BxB     |
| 20 P-QN3 | B-K5    |
| 21 N-Q2  | ----    |

N-Q4 sets up the sacrifice 21---, BxNP, whereas the text makes the sacrifice doubtful.

- |         |      |
|---------|------|
| 21 ---- | B-B4 |
|---------|------|

Black has such a good game so he decides against the sacrifice ( 21---, BxNP; 22 KxB, N-R5ch; 23 K-B1, Q-R6ch; 24 K-K2 , and the win is unclear.) 23 K-R1, Q-R6; 24 R-KN1, B-K4 is an easy win for Black.

- |          |      |
|----------|------|
| 21 ----  | B-B4 |
| 22 P-QR4 | Q-Q1 |
| 23 R-R2  | N-K4 |

There is no escape for White and what follows is sheer desperation. If 24 Q-R1, N-Q6; 25 R-KB1, N-N5 wins exchange. White had to give up the exchange if he was to continue the game but did not choose to do so.

- |             |      |
|-------------|------|
| 24 B-Q4     | N-Q6 |
| 25 BxB      | QxB  |
| 26 RxRch.   | RxR  |
| 27 N/2-K4   | NxQ  |
| 28 Resigns. |      |

We hope to have more State Championship Tournament games in our next issue.

Ye Ed cannot fathom his reasoning in this game. Best was to merely surrender a trapped rook for an over-active knight and be done with it! Instead he suffers mate!

@ On Black's 11th ----, Q-K2; 12 O-O, QxB??; 13 Q-B2 and Black's queen is trapped!

wade

We like to bring you stories of tournaments, matches, and general chess activity and do not care to devote the pages of the Chess Letter to boring chess election meetings. We like to name those elected & that is all. Too often those elected do nothing until the next election anyway! At the '55 WCF election we more fortunate than usual electing a tourney director who WORKED at the job for a change. Also we got a publicity director who also WORKED at the job for a refreshing change. We had a little trouble with a publisher who wanted to edit the editor but not take the work of the editor. Our circulation editor, secretary and our treasurer have done their usual good work. We have had a president who did great work reviving Spokane chess and did not meddle with a going concern, which the WCF now is.

Another election is coming up in April and for some time now OLIVER LAFRENIERE of Yakima has made it known to one and all he is running for WCF president. We have not heard from DR. PARKER, present president of the WCF. He may wish to run again. We believe CHARLES JOACHIM could do a good job as president if he wishes to accept nomination. MAX MAGE has been vice-president 2 years. He could be a good president if he chooses to run for the job. KEN DART did nearly as much for Everett as LaFreniere for Yakima, Dr. Parker for Spokane, or Charles Joachim for Olympia and could make a fine president.

What kind of men are they? What about their past record? Are they well-liked? Do you think they would do a good job? These are some of the questions you should have the answers to before you vote.

We hope our tourney director, publicity director, circulation director, treasurer, secretary will choose to run again as the will be hard to replace.

We hope to have a young man with much enthusiasm take over the editorial reins as we have had the job most of the time during the past seven years. "It is time for a change!" We feel the job has been rewarding and the many friends we have made far outnumber the few enemies acquired.

We would like to stay in touch as a spectator and just play chess for awhile. Perhaps we could have the vice-pres. job?

# NORTHWEST RATINGS

by R. A. Karch

Northwest ratings on all events published in this magazine up until and including the December 1958 issue. This is a continuation of the ratings published in the Feb. issue

Class C	
Addison, Erving,	Steilacoom, Wash. 1187
Alberts, D.	Seattle, Wash. 1354
Alexander, R.	Seattle, Wash. 1582
Allen, Robert,	Seattle, Wash. 1450
Alspach, Dan	Seattle, Wash. 1519
Amdahl, Karl,	Spokane, Wash. 1500
Anderson, John	Walla Walla, Wash. 1525
Anderson, Nels	Spokane, Wash. 1356
Asay, Melvin,	Blackfoot, Ida. 1473
Atkinson, William	Shelton, Wash. 1558
Backer, J.	Seattle, Wash. 1500
Baitis, Fred,	Montana 1400
Baitis, Hartmut,	Montana 1550
Barclay, Ken	Seattle, Wash. 1394
Barker, William	Spokane, Wash. 1533
Barnstein, Chas.	Pocatello, Ida. 1525
Beck, Arthur	Olympia, Wash. 1488
Belanger, J.	Seattle, Wash. 1554
Bentley, Britt,	Walla Walla, Wash. 1450
Bezemer,	Washington 1500
Bivens, Louis	Walla Walla, Wash. 1510
Blair, J. C.	Seattle, Wash. 1380
Blend, Carroll	Montana 1550
Bochenski, Louis	Olympia, Wash. 1509
Bolenbough, Mike	Seattle, Wash. 1448
Booth, John T.	Olympia, Wash. 1571
Bowerman, Chet	Walla Walla, Wash. 1561
Braley, John	Seattle, Wash. 1448
Brandvold, Carl	Montana 1400
Breakey, J.	Washington 1525
Brimble, Herbert	Spokane, Wash. 1530
Britt, D.	Wallace, Idaho 1523
Brown, Richard	Idaho Falls, Idaho 1579
Brown, Robert	Newberg, Ore. 1590
Bruhns, M.	Fort Lewis, Wash. 1427
Burnett, Monroe	Olympia, Wash. 1553
Burns, Bob	Seattle, Wash. 1216
Butler, Bob	Yakima, Wash. 1385
Calkins, James	Spokane, Wash. 1550
Calkins, Lloyd	Spokane, Wash. 1554
Calligan, Chris	Seattle, Wash. 1512
Carlson, Carl E.	Tacoma, Wash. 1385
Casperson, Dean	Clackamas, Ore. 1400
Cleveland, Bill	Nampa, Idaho 1567
Colenso, Stan	Montana 1550
Connell, Timothy	Olympia, Wash. 1492
Cook, Al R.	Tacoma, Wash. 1496
Cook, Klaus	Olympia, Wash. 1351
Cox, Arthur	Seattle, Wash. 1300
Craig, Bob	Seattle, Wash. 1400
Crum, Jim	Little Rock, Wash. 1407
Curtis, F.	Washington 1400
Dart, Ken	Everett, Wash. 1576
Davis, Dan	Seattle, Wash. 1500
Davis, John	Portland, Ore. 1400
Davis, Mrs. Pauline	Olympia, Wash. 1375
Derham, Richard	Seattle, Wash. 1457
Devenere, V.	Spokane, Wash. 1314
Dodge, Leon	Anacortes, Wn. 1533
Dolle, Thomas J.	Puyallup, Wash. 1572
Dolph, N. B.	Condon, Ore. 1250
Dolph, R. C.	Boise, Ida. 1529
Driscoll, Tom	Heppner, Ore. 1550
Durendorf, Graham	Olympia, Wash. 1379
Duggan, W.	Washington 1453
Dumins, Juris	Seattle, Wash. 1542
Dunson, L. B.	Spokane, Wash. 1400
Durocher, Z.	Seattle, Wash. 1514
Durwald, L. C.	Olympia, Wash. 1481
Edberg, Mrs. Arlene	Tieton, Wash. 1534
Edwards, Dwight	Seattle, Wash. 1564
Egbert, Miss Ruby	Olympia, Wash. 1418
Edge, Eddy	Steilacoom, Wn. 1542
Egg, Doyle	Olympia, Wash. 1511
Ehle, Larry	Seattle, Wash. 1321
Ekstrom, Larry	Walla Walla, Wn. 1536
Elliott, Walter	Seattle, Wash. 1500
Everest, Gary	Newberg, Ore. 1521
Faithful, George	Tacoma, Wash. 1578
Faud, Habib	Yakima, Wash. 1400
Felt, J.	Montana 1445
Flynn, Nick	Steilacoom, Wn. 1383
Fox, Don	Boise, Idaho 1500
Frank, Ludwig J.	Tacoma, Wash. 1428
Franklin, Gary	Seattle, Wash. 1539
Frederic, Jack L.	Seattle, Wash. 1384
Fredstrom, Bruce	Sandpoint, Ida. 1485
Freichtel, Pfc.	Olympia, Wash. 1426
Furman, Pfc.	Olympia, Wash. 1430
Gemar, Joseph R.	Kelso, Wash. 1519
Gerow, Earl	Steilacoom, Wn. 1591
Ginther, Fred	Seattle, Wash. 1300
Gleeson, F.	Washington 1550
Glenn, G.	Washington 1520
Goodwin, Ed Jr.	Olympia, Wash. 1391
Graff, Barney	Murtaugh, Idaho 1492
Gray, C.	Washington 1573
Green, Wally	Seattle, Wash. 1427
Gregory, N.	Steilacoom, Wn. 1117
Guenther, Douglas	Yakima, Wash. 1386
Gunn, Gary	Tacoma, Wash. 1381
Haffey, Tim	Newberg, Ore. 1162

(continued on next page)

Class C continued

Hammen, P.	Missoula, Mont.	1583	Michaelis, Mrs. B.	Olympia, Wash.	1400
Hammersley, Jim	Seattle, Wash.	1507	Mohs, James	Olympia, Wash.	1411
Hand, Bob	Little Rock, Wash.	1466	Moody, Tom	Steilacoom, Wn.	1373
Hannon, D.	Washington	1582	Moore, Robert J.	Seattle, Wash.	1353
Hanson, C.	Washington	1404	Murray, Bob	Steilacoom, Wn.	1485
Hanson, J.	Washington	1512	Murray, Chuck	Montana	1500
Harris, Jack	Steilacoom, Wash.	1295	Myers, Mike	Little Rock, Wn.	1528
Harrison, James	Olympia, Wash.	1473	Noble, Keith	Newberg, Cre.	1166
Hartman, John	Spokane, Wash.	1510	Paglieri, J.	Washington	1356
Hayworth, P. G.	Sandpoint, Idaho	1500	Parker, Dick	Boise, Idaho	1588
Hemstad, Alf	Seattle, Wash.	1505	Parks, John	Steilacoom, Wn.	1503
Herman, May	Olympia, Wash.	1524	Patter, I. B.	Rupert, Idaho	1583
Hickey, Don	Seattle, Wash.	1445	Pete, John	Seattle, Wash.	1378
Hicks, Frank	Olympia, Wash.	1346	Pierce, Robert	Focatello, Ida.	1400
Hill, John	Spokane, Wash.	1571	Pomerantz, Dave	Portland, Ore.	1400
Hintz, Otto	Olympia, Wash.	1536	Potter, Dr.	Washington	1588
Hoffman, Richard	Steilacoom, Wash.	1505	Powell, S. D.	Montana	1500
Holohan, Martin	Walla Walla, Wash.	1467	Raine, Ronald	Walla Walla, Wn.	1475
Hopkins, Delbert	Boise, Idaho	1540	Raleigh, William H.	Seattle, Wash.	1398
Howard, Fred C.	Seattle, Wash.	1513	Ransom, Armstrong	Olympia, Wash.	1485
Hudson, Del	Seattle, Wash.	1306	Rapp,	Clackamas, Ore.	1400
Hull, Everett	Rupert, Idaho	1590	Rice, Ralph	Spokane, Wash.	1515
Hyatt, Neale	Seattle, Wash.	1495	Riel, Dave	Steilacoom, Wn.	1288
Iwata, Ted	Seattle, Wash.	1478	Robins, Lou	Hepner, Oregon	1349
Jacobsen, Kenneth	Boise, Idaho	1493	Roe, Leonard	Seattle, Wash.	1500
Jensen, David	Seattle, Wash.	1505	Rogers, Larry	Olympia, Wash.	1446
Jerome, Richard	Yakima, Wash.	1526	Rose, Donald	Spokane, Wash.	1343
Jester, Jim	Boise, Idaho	1536	Rosengren, H.	Washington	1446
Johnson, Dale	Washington	1509	Rousseau, Eugene	Steilacoom, Wn.	1142
Jones, Nich	Portland, Ore	1400	Roy, Norman	Seattle, Wash.	1138
Keel, Terry	Montana	1550	Sandelius, Rosalie	Olympia, Wash	1481
Kelly, Jack	Spokane, Wash.	1564	Schader, James N.	Olympia, Wash.	1408
Kenna, Joe	Olympia, Wash.	1522	Schain, S.	Washington	1450
King, Joe	Tacoma, Wash.	1466	Schelihase, Theo.	Bellevue, Wash.	1400
King, Neal	Walla Walla, Wash.	1575	Schroedelin, John	Seattle, Wash.	1576
Kiszely, K.	Washington	1544	Schordan, Jerry	Seattle, Wash.	1387
Knobel, Earl	Walla Walla, Wash.	1400	Scott, Lee	Seattle, Wash.	1400
Knobel, John	Walla Walla, Wash.	1466	Seefried, W.	Blackfoot, Ida.	1538
Kramer, Henry	Olympia, Wash.	1450	Shafer, E.	Fort Lewis, Wn.	1477
Kravenas, Buster	Seattle, Wash.	1346	Shamaria,	Seattle, Wash.	1531
Krueger, Hartley	Olympia, Wash.	1564	Sheire, Ellen	Butte, Mont.	1531
Lamon, Charles	Steilacoom, Wash.	1562	Shelton, Harvey	Portland, Ore.	1400
Larsen, D.	Pocatello, Idaho	1425	Sherar, Leslie	Portland, Ore.	1300
Lee, D.	Rupert, Idaho	1592	Simmons, Lee	Spokane, Wash.	1540
Leonard, Frank	Boise, Idaho	1485	Slade,	Portland, Ore.	1500
Lewis, A. E.	Seattle, Wash.	1409	Smith, George	Seattle, Wash.	1400
Lienenweber	Washington	1399	Smith, Kenneth	Port Townsend, Wash.	1500
Livermore	Washington	1543	Snarr, M. J.	Fort Lewis, Wn.	1300
Livingston, Alfred	lll Olympia, Wash.	1594	Snyder, R. B.	Montana	1500
Loohey, Kent	Olympia, Wash.	1505	Sohl, Terry	Montana	1400
Lorenzo, B.	Fort Lewis, Wash.	1518	Solts, Carl M.	Nampa, Idaho	1300
Lulham, Mike	Spokane, Wash.	1444	Spangenburg, C. E.	Boise, Idaho	1500
McBride, P.	Washington	1542	Spencer, Judy	Seattle, Wash.	1300
MacCalmant, Bob	Little Rock, Wash.	1526	Stanke, Richard	Nampa, Idaho	1400
McLaughlin, Bruce	Seattle, Wash.	1191	Stansby, L.	Washington	1400
Madden, Tom	Boise, Idaho	1548	Steadman, John	Steilacoom, Wn.	1300
Meade	Washington	1476	Stenersen, Steve	Spokane, Wash.	1400
Mejia, Juan	Steilacoom, Wash.	1394	Stimson, D.	Tacoma, Wash.	1400
Michaelis, B.	Olympia, Wash.	1444	Storm, N.	Steilacoom, Wn.	1400

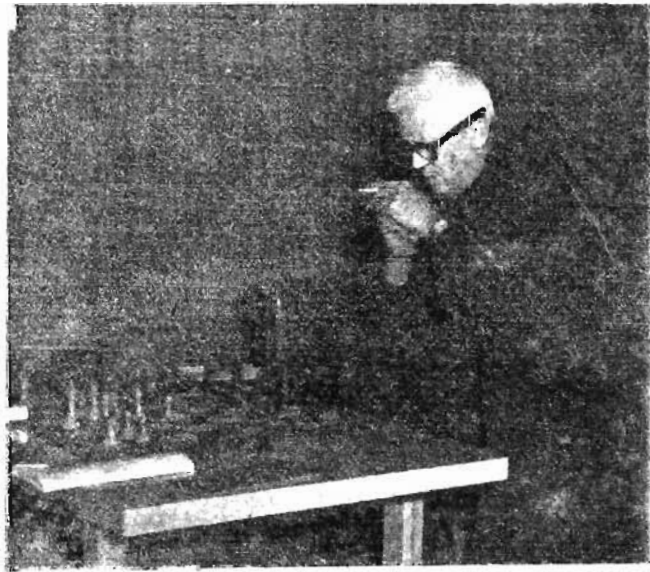


Class C continued

Stralzoff, A.	Seattle, Wash.	1425
Stratton, Bob	Olympia, Wash.	1404
Strom, Richard	Seattle, Wash.	1353
Strong, Bob	Steilacoom, Wash.	1491
Suydam, Bob	Boise, Idaho	1533
Swank, Edgar	Spokane, Wash.	1400
Syrclle, Jerry	Yakima, Wash.	1513
Talbot, Charles	Richland, Wash.	1467
Talbot, Clinton	Nampa, Idaho	1589
Taylor, Ken	Seattle, Wash.	1500
Taylor, Nelson	Boise, Idaho	1530
Teltoft, Mike	Seattle, Wash.	1491
Thorndale, Bill	Olympia, Wash.	1571
Tierney, Pat	Spokane, Wash.	1548
Towne, Roy	Everett, Wash.	1500
Tracy, H. B.	Montana	1587
Ulrich, Robert	Spokane, Wash.	1426
Utz, R. E.	Auburn, Wash.	1421
Walker, Marvin	Newberg, Oregon	1218
Waring, George	Seattle, Wash.	1439
Warner, Russel	Little Rock, Wn.	1313
Warren, K.	Washington	1400
Wells, Dale	Olympia, Wash.	1531
Wendel, H.	Montana	1568
Wendt, Joel	Montana	1300
Werner, Harold	Little Rock, Wn.	1506
Wheeler, John	Tacoma, Wash.	1468
Willenberg, Bill	Seattle, Wash.	1419
Williams, Buz	Olympia, Wash.	1549
Williams, Mrs. B.	Olympia, Wash.	1400
Williams, Doc	Olympia, Wash.	1441
Williamson, John	Nampa, Idaho	1508
Wilson, Michael	Richland, Wash.	1579
Wilson, Pat	Seattle, Wash.	1450
Wizental, R.	Montana	1400
Wolover, Gary	Tacoma, Wash.	1366
Wong	Portland, Ore.	1500
Worth, Charles	Seattle, Wash.	1448
Zigler, C. E.	Fort Lewis, Wash.	1580



Fred M. Howard figuring how to clobber his opponent.



G. S. G. Patterson in deep study at the Washington Open.



Ulvestad, Seattle Chess Master vs Jim McCormick at the Washington Open, which he won with a 6-0 score. McCormick was second with a 5-1 score.

# HARMON & BELL TOP CENTENNIAL

Sixteen year-old CLARK HARMON of Portland won the first Oregon Centennial Open Chess Tournament. It is doubtful that he will ever win another. He would have to live to be 116 to enter the next centennial event.

In a virtual tie for first was another Portland junior, sixteen year-old JOHN BELL. Both finished the tournament with 5-1 records, both being undefeated with four wins and two draws. Both leaders drew with 3rd place finisher JAMES MCNEESE of Portland & Harmon also drew with DUANE MEADOR of Vancouver, Washington while Bell's other draw was with HAROLD HUGHART.

JAMES MCNEESE drew the two leaders and Geary for three wins and three draws and a  $4\frac{1}{2}-1\frac{1}{2}$  score. McNeese was also the winner of the "B" division trophy.

34 players turned out for this event, held at the Oregonian Hostess House on the weekend of Feb. 21-22. Only six came from Washington with three of them from the area adjacent to Portland which is an unusually small number.

To quote IVARS DALBERGS in the Portland Chess Club's new bulletin "Chess Chatter", "To put it briefly, the tournament resulted in the victory of two local Bobby Fischers against a long list of fish - not to mention some disappointed experts." This would appear to sum up the event nicely in the proverbial nut shell.

Still, we have a lot of space left on this page and there were a few pretty fair players outside the winner's circle in this event.

For instance there was the tough HAROLD HUGHART of Albany with  $4\frac{1}{2}-1\frac{1}{2}$ , who could have won the tourney if he had not lost to HARMON in the crucial last round. Remember ROBERT WALKER who defeated ULVESTAD and the editor of the Wash. Chess Letter in the '58 Pacific Northwest Open to score  $4\frac{1}{2}-1\frac{1}{2}$  to win that tournament? He was in this tourney & was upset by GARY FEUERBERG, another one of those pesky Portland juniors, in the second round but still had a chance until his draw with MEADOR in the last round relegated him

to fifth place. Bob is about due to win another tournament.

DUANE MEADOR, still reaching for the brass ring but just missing again, won 3 in a row before somehow contriving to lose a game to BELL. Two draws against tough opposition in the final two rounds lowered his score to 4-2. He took sixth spot.

The only Seattle player in the event was RICHARD SCHULTZ who placed seventh and won four and lost to HUGHART & WALKER. Schultz was good enough to play first board for the second place Seattle Chess Club in the recently concluded Puget Sound League.

Famed master ARTHUR DAKE visited the tourney room Sunday and adjudicated a game between CHARLES GEARY & JAMES MCNEESE. (it was a draw)

Trophy prizes were awarded Sunday evening by CY FRIEDMAN, Portland Chess Club's vice president. Earlier, Cy and FABIAN CARRANGLO entertained contestants by "singing" an original composition for the special "once in a hundred years" event.

The Portland Oregonian gave a big write up on 8-year old BRAD BERSEKULU who played in the tourney. The reporter seemed quite surprised that he was "normal" and his report was headed "BOY, 8, STARTLES CHESS VETS." Brad won one game in eight moves, another in only seven! He had only learned the game nine months earlier.

The newspaper story left the implication that a new Bobby Fischer had just come over the horizon. However, Brad's 7 move win was against his father who finished in 34th place, and his 8 move win was over 11 year old ARTHUR ANDREWS, the only other player in the tournament younger than high school age. Brad finished with a 2-4 score, forfeiting his final round game.

A new system of tie-breaking was used. The "Moore" system is the Solkoff with the lowest win dropped. This was used for the first 3 places while Median, then Solkoff was used the rest of the way down.

By DELANE MOORE, Sec. P.C.C.

OREGON CENTENNIAL OPEN TOURNAMENT

Place	-1-	-2-	-3-	-4-	-5-	-6-	W L D	Score	Tie-break. Points
1. Clark Harmon (Portland)	W31	D3	W11	W18	D6	W4	4-0-2	5 -1	20.5
2. John Bell (Portland)	W33	W16	W9	W6	D4	D3	4-0-2	5 -1	20.0
3. James McNeese (Portland)	W29	D1	W16	D15	W13	D2	3-0-3	4 $\frac{1}{2}$ -1 $\frac{1}{2}$	20.0
4. Harold Hughart (Albany)	W23	W30	W14	W7	D2	L1	4-1-1	4 $\frac{1}{2}$ -1 $\frac{1}{2}$	19.5
5. Robert Walker (Newport, Cal.)	W19	L13	W32	W20	W7	D6	4-1-1	4 $\frac{1}{2}$ -1 $\frac{1}{2}$	17.5
6. Duane Moador (Vancouver, Wn.)	W17	W8	W21	L2	D1	D5	3-1-2	4 -2	17.5
7. Richard Schultz (Seattle)	W24	W18	W13	L4	L5	W14	4-2-0	4 -2	14.5
8. Al Benson (Portland)	W12	L6	W25	L13	W17	W20	4-2-0	4 -2	13.0
9. Cyrus Friedman (Portland)	D11	W33	L2	D10	W25	W16	3-1-2	4 -2	12.5
10. Gary Singer (Portland)	L14	W19	W30	D9	W21	D13	3-1-2	4 -2	12.0
11. Cliff Comisky (Portland)	D9	W23	L1	D28	W26	W33	3-1-2	4 -2	8.5
12. Joe Bricher (Cottage Grove)	L8	L17	W29	W31	W28	W21	4-2-0	4 -2	8.0
13. Gary Feuerberg (Portland)	W25	W5	L7	W8	L3	D10	3-2-1	3 $\frac{1}{2}$ -2 $\frac{1}{2}$	16.5
14. Vincent Bricher (Cot. Grove)	W10	W26	L4	D21	W15	L7	3-2-1	3 $\frac{1}{2}$ -2 $\frac{1}{2}$	13.0
15. Charles T. Geary (Eugene)	L30	W29	W28	D3	L14	W22	3-2-1	3 $\frac{1}{2}$ -2 $\frac{1}{2}$	7.5
16. Danny Towne (Yakima)	W20	L2	L3	W24	W18	L9	3-3-0	3 -3	14.5
17. James Weaver (Portland)	L6	W12	L18	W19	L8	W23	3-3-0	3 -3	13.5
18. Mal Skarsten (Forest Grove)	W27	L7	W17	L1	L16	W28	3-3-0	3 -3	12.0
19. Elmer Hunt (Vancouver, Wn.)	L5	L10	W26	L17	W33	W24	3-3-0	3 -3	11.0
20. Wayne Bauer (Gladstone)	L16	W22	W24	L5	W23	L8	3-3-0	3 -3	10.5
21. R. W. Cairncross (Portland)	W22	W32	L6	D14	L10	L12	2-3-1	2 $\frac{1}{2}$ -3 $\frac{1}{2}$	12.5
22. Gary Everest (Newberg)	L21	L20	D33	W34	W32	L15	2-3-1	2 $\frac{1}{2}$ -3 $\frac{1}{2}$	7.0
23. Charles Moore (Portland)	L4	L11	W27	W32	L20	L17	2-4-0	2 -4	12.0
24. Robert Brown (Dundee)	L7	W34	L20	L16	W27	L19	2-4-0	2 -4	11.0
25. Ed Peterson (Portland)	L13	W31	L8	W30	L9	F	2-4-0	2 -4	8.5
26. Brad Mersereau (Portland)	W34	L14	L19	W29	L11	F	2-4-0	2 -4	7.5
27. Edgar Andrews (Portland)	L18	L28	L23	W33	L24	W29	2-4-0	2 -4	6.0
28. Ken Dart (Everett)	L32	W27	L15	D11	L12	L18	1-4-1	1 $\frac{1}{2}$ -4 $\frac{1}{2}$	
29. Arthur Andrews (Portland)	L3	L15	L12	L26	W34	L27	1-5-0	1 -5	11.0
30. James Fournior (Lake Grove)	W15	L4	L10	L25	F	F	1-5-0	1 -5	8.5
31. Joseph Gemar (Kelso)	L1	L25	W34	L12	F	F	1-5-0	1 -5	5.0
32. Fred Williams (Portland)	W28	L21	L5	L23	L22	F	1-5-0	1 -5	4.0
33. John Corenbaum (Portland)	L2	L9	D22	L27	L19	L11	0-5-1	$\frac{1}{2}$ -5 $\frac{1}{2}$	
34. Bill Mersereau (Portland)	L26	L24	L31	L22	L29	F	0-6-0	0 -6	

Deane Moore, Tournament Director. Cyrus Friedman, Publicity Director.

# '59 PUGET SOUND OPEN

SATURDAY  
Starts at 9:30 a.m.  
Rd. 2 - 2 p.m.  
Rd. 3 - 7 p.m.

THE 1959 PUGET SOUND OPEN WILL BE PLAYED ON THE  
WEEKEND OF MAY 9TH AND 10TH AT THE UNIVERSITY  
OF SEATTLE STUDENT UNION BUILDING

SUNDAY  
Rd. 4 - 8 a.m.  
Rd. 5 - 12:30  
Rd. 6 - 5 p.m.

( Site confirmed in next issue )

Six round Swiss. 30 moves per. hour. Adjudication after 4 hours. Solkoff and then Median tie-breaking. Entry \$3.00 for seniors and \$2.00 for junior players.

# PORTLAND CHESS NEWS

## PORTLAND JUNIOR CHESS FED. RESULTS

### Round Three

<u>CLEVELAND H. S.</u> 8	<u>LINCOLN H. S.</u> 2
Kon Gilson 2	Don Brec 0
Bob McNeil 1	Martin Vidgoff 1
Steve Neptune 2	Bob White 0
Doug Coleman 1	Rod Cox 1
Bob Ellstrom 2	(forfeit) 0
<u>ROOSEVELT H. S.</u> 9	<u>LAKE OSWEGO H. S.</u> 1
John Bell 2	Larry Finley 0
Dennis Slade 2	Jim Goddard 0
Jerry Uyeda 2	Joe Reynolds 0
Dan Wong 1	Alan Berdict 1
David Papkoff 2	(forfeit) 0
<u>GRANT H. S.</u> 5½	<u>CLACKAMAS H. S.</u> 4½
Gary Feuerberg 1*	Clark Harmon 1*
Cliff Comisky 1*	Frank Nettleton 1*
Bob Hardin 2	Dean Casperson 0
Cyril Penn 0	John Davis 2
Los Shearer 1½	Glenn Akers ½

\* Double draws. Akers incorrectly spelled as "Akevs" in Jan. issue. Results of rounds one and two appeared in the January Chess Letter.

### THE TEAM STANDINGS AFTER THREE ROUNDS

	W L (Team)	W L (Individual)
Roosevelt	3-0	23 -7
Clackamas	2-1	23½-6½
Grant	2-1	19½-10½
Cleveland	1-2	13 -17
Oswego	1-2	7 -23
Lincoln	0-3	4 -26

The first two rounds indicated a run-away for Clackamas but Grant upset Clackamas 5½-4½ to make it an exciting 3-team race.

A controversy arose in the fourth round match between Grant and Cleveland when Grant appeared 45 minutes late. No rules were in existence regulating forfeiture for a late appearance. It was decided at a league meeting that Grant should forfeit the match so Grant withdrew from the league. Therefore the standings above may mean nothing.

(Editor's heated comment: They can't treat those generals like that! Why wreck your league because your league brass failed to make enough rules? Best to reschedule that Grant match with Cleveland even the Cleveland knows they will get beaten! Make the rule stick for all future violations though.

## PORTLAND CHESS CLUB ELECTION

At the annual Portland Chess Club business meeting, ALBERT BENSON was elected president, CY FRIEDMAN became vice-president, and DEANE MOORE is the new secretary-treasurer.

E. G. SHORT, outgoing secretary-treasurer and CAL BURNHAM, OUTGOING President, both of whom had held their respective offices for the past number of years, were given a vote of appreciation for their services to the club.

### PORTLAND CHESS CLUB LADDER ON JAN. 31st. 1959

Dalbergs	1000
Short	867
Burnham	742
Meador	714
Dunaway	676
Harmon	646
Bell	626
Haffner	555
Singer	532
Nottingham	529
Friedman	477
Skarston	464
MacKenzie	457
Moore	449
Nettleton	448
Benson	442
York	426
Bauer	374
Bellamy	336
Gordon	321
Carangelo	290
Haslop	286
Hardin	278
Hewitt	255
Dod	191
Diamond	136
Wade	127
Pomerantz	109
Kravig	99
Brec	66

by DEANE MOORE

Secretary-treasurer

( Keep the news coming, Deane! )

# SEATTLE HIGH SCHOOL LEAGUE

by Schroedel

## Seattle High School Chess League Standings

	Won	Lost	Pts. Scored.
1. Garfield	2 - 0		17½
2. Lincoln	2 - 0		6
3. West Seattle	1 - 1		11
4. Highline	1 - 1		9
5. Queen Anne	1 - 1		6½
6. Prep/ O'Dea	1 - 1		2½
7. Roosevelt	0 - 2		2½
8. Scalth	0 - 2		2

### First Round

Highline	8 - 2	Scalth
1. Gordon Gray	2 - 0	Jerry Ball
2. Berry Lewis	2 - 0	Darline Cook
3. J. Meredith	2 - 0	Rosalce Woodcox
4. D. Marks	0 - 2	Ed Reed
5. Terry Rogers	2 - 0	Norman Sommers

Garfield	7½ - 2½	Prep/ O'Dea
1. Bob Doi	1 - 1	Mike Franett
2. D. Robertson	1½ - ½	John Brailoy
3. Carl Cravens	1 - 1	Jim Blair
4. Teddy Iwata	2 - 0	B. Templeton
5. Robert Allen	2 - 0	Jon Egge

Queen Anne	6½ - 2½	Roosevelt
1. Jim Lawrence	1 - 1	B. Pearson
2. Norman Costillo	1 - 0	George Ordell
3. Helmick	1½ - ½	G. Sundgren
4. Don Kane	2 - 0	Jack McLeish
5. Neuman	1 - 1	Don Davis

Lincoln	6 - 3	West Seattle
1. Dave Grannis	1 - 1	Willy Brandal
2. Peter O'Gorman	1 - 0	Al Bender
3. Don Elliott	2 - 0	Bill Willenberg
4. Wally Green	1 - 1	John Schroedel
5. C. Greenup	0 - 1	Val Kleper
5. C. Greenup	1 - 0	Pat Wilson

### Second Round

Garfield	10 - 0	Queen Anne
1. Robert Allen	2 - 0	Jim Lawrence
2. Dick Robertson	2 - 0	Norman Costillo
3. Carl Cravens	2 - 0	Don Kane
4. Teddy Iwata	2 - 0	Jenson
5. Wong	2 - 0	Kozo

Prep/ O'Dea 10 Roosevelt 0 (forfeit)  
 Lincoln 10 Scalth 0 (forfeit)

Forfeit matches do not add points toward tie-breaking. (Pts. scored)

West Seattle	8 - 1	Highline
1. Willy Brandal	2 - 0	Gordon Gray
2. Al Bender	1 - 0	Berry Lewis
3. Bill Willenberg	2 - 0	Terry Rogers
4. John Schroedel	2 - 0	Harry Olson
5. John Pete	1 - 0	Bill Chapman
5. Darrell Matson	0 - 1	Bill Chapman

### REMAINING SCHEDULE

Feb. 28th.	Roosevelt	-	Garfield
Mar. 1st.	Queen Anne	-	Prep/ O'Dea
Mar. 7th.	West Seattle-		Scalth
Mar. 8th.	Lincoln	-	Highline
Mar. 14th.	Garfield	-	Scalth
Mar. 15th.	West Seattle-		Roosevelt
Mar. 21st.	Queen Anne	-	Lincoln
Mar. 22nd.	Prep/ O'Dea	-	Highline
Mar. 28th.	Queen Anne	-	West Seattle
Mar. 29th.	Prep/ O'Dea	-	Lincoln
Apr. 4th.	Highline	-	Garfield
Apr. 5th.	Roosevelt	-	Scalth
Apr. 11th.	Lincoln	-	Garfield
Apr. 12th.	Roosevelt	-	Highline
Apr. 18th.	Queen Anne	-	Scalth
Apr. 19th.	West Seattle-		Prep/ O'Dea
Apr. 25th.	Queen Anne	-	Highline
Apr. 26th.	Prep/ O'Dea	-	Scalth
May 2nd.	West Seattle-		Garfield
May 3rd.	Roosevelt	-	Lincoln

### SEATTLE HIGH SCHOOL LEAGUE RULES

1. A match is to be five boards with two games at each board, one game with each color. Alternates may be used on fifth board only. If a team has less than five players, the lowest boards must be forfeited.
2. The strongest player must play on first board, the second strongest on 2nd board, etc.
3. Only players attending the high school represented are eligible to play on the team representing that high school.
4. Forfeits occur after one hour of the scheduled starting time.
5. No time control unless agreed upon by the individual players.
6. The team winning the most matches shall be champion and take possession of George Bishop trophy. Scores used to break ties.



# U. of WASHINGTON CHESS

by Eddy

## 1959 WASH. STATE JUNIOR

5 round Swiss

Entry \$2.50

March 21-22nd.

At the U. OF WASHINGTON STUDENT UNION BUILDING - Starts 10 a.m.

## U. of WASHINGTON NEWS

Because of the inefficiency of round-robin tournaments, the U. of W. Chess Club has adopted a Swiss system tournament for this quarter. There are 16 entrants in the tourney with pairings made at the beginning of each meeting. Players not present at a meeting forfeit that round. TERRY NELSON is directing. The tournament is scheduled for seven rounds.

## BLINDFOLD EXHIBITION

On Feb. 6th, VIKTORS PUPOLS put on a seven board blindfold exhibition. The result: Pupols  $2\frac{1}{2}$ , opposition  $4\frac{1}{2}$ . TERRY NELSON acted as moderator.

## U. of W. WINS MATCH 7-2

On Friday, Feb. 20th, the U. of Washington team paid a visit to Seattle Pacific College for a match. The visitors won by a score of 7 to 2. The U. of W. team had previously dropped matches to West and North Seattle teams of the Puget Sound League, so this was the team's first triumph in three starts.

U. of Washington 7 - 2 Seattle Pacific Col.

- |                    |       |                |
|--------------------|-------|----------------|
| 1. Visvaldis Smits | 1 - 0 | Phil Moormann  |
| 2. Tony Elezonic   | 2 - 0 | Al Halvorsen   |
| 3. A. Eydal        | 1 - 1 | Carl Boness    |
| 4. Robert Douglas  | 1 - 1 | Roger McCorkle |
| 5. Mike Peterson   | 2 - 0 | Chuck Watson   |

## U. of W. TRIPS W. SEATTLE $6\frac{1}{2}$ - $3\frac{1}{2}$

The U. of Washington Chess Club team avenged a previous loss to West Seattle of the Puget Sound League, defeating the West-side club  $6\frac{1}{2}$  to  $3\frac{1}{2}$ .

The University team was greatly strengthened by the addition of TERRY NELSON who played first board.

U. of Washington	$6\frac{1}{2}$ - $3\frac{1}{2}$	West Seattle
1. Terry Nelson	$1\frac{1}{2}$ - $\frac{1}{2}$	Max Inge
2. Boyd Walther	$1\frac{1}{2}$ - $\frac{1}{2}$	Gene Vukonich
3. Visvaldis Smits	$\frac{1}{2}$ - $1\frac{1}{2}$	Fred Howard
4. Tony Elezonic	2 - 0	Killian Seckamp
5. A. Eydal	1 - 1	Harold Dillon

## SKITTLES TOURNAMENT

	1	2	3	4	Score
1. Buz Eady	X	$\frac{1}{2}$	1F	1	$2\frac{1}{2}$ - $\frac{1}{2}$
2. Bill Willenberg	$\frac{1}{2}$	X	1	$\frac{1}{2}$	2 - 1
3. Willy Brandal	OF	0	X	1	1 - 2
4. Pat Wilson	0	$\frac{1}{2}$	0	X	$\frac{1}{2}$ - $2\frac{1}{2}$

## SEATTLE PACIFIC COLLEGE

PHIL MOORMANN, now attending Seattle Pacific College, reports that a new chess club has been organized at that school. The club has twelve members and is now engaged in a round-robin tournament.

The officers of the club are as follows:

President.....Phil Moormann  
 Vice-President.....Carl Boness  
 Secretary.....Al Halvorsen  
 Treasurer.....D. Casebeer  
 Faculty Advisor.....Prof. Hanson

The Seattle Pacific College Club offers instruction for anyone who is interested. PHIL MOORMANN is the instructor.

## CHESS BITS by Wade

In the past year chess in colleges & high schools has made tremendous strides. In this issue you can read of the activities in Seattle, Portland, and the Inland Empire. Once drowsy Yakima has become active. We read of activity in the Tri-City area.

We remember only a few short years ago when 16 to 20 players was usual in our "b" events, such as the Washington Open, Seafair, Puget Sound Open, etc. Now Seattle last two opens have had 55 and 50 players. Portland always has between 30 and 44. Yakima, in its first big time event, exceeded 30. But let's not rest on our laurels. Activity has been slow in Spokane & Tacoma.

# INLAND EMPIRE JUNIOR CHESS *by Bruce Fredstrom*

The Inland Empire Junior Chess League (IEJCL) got underway in February with five high schools in the Inland Empire entering. Teams representing Coeur d'Alene, Sandpoint, Spirit Lake, and Wallace (all in northern Idaho), and Lewis & Clark (in Spokane) will battle it out in a double round-robin system for the trophy. With luck, the League's promoters "expect it to contain from six to eight teams in the '59-1960 competition."

All IEJCL matches will be completed & reported in time for presentation of the League trophy during the early part of May. Complete standings of member clubs as well as a wrap-up of IEJCL activities should appear in this column by the June issue.

## WALLACE SWAMPS COEUR D' ALENE IN FIRST JCL MATCH $9\frac{1}{2}-\frac{1}{2}$

Wallace High School trampled the recently organized Coeur d'Alene H. S. team to the tune of  $9\frac{1}{2} - \frac{1}{2}$  in the opening match of the IEJCL season. Once again 'tis proved, Experience over Inexperience will triumph. Played February 18th.

WALLACE H. S.	$9\frac{1}{2}$	COEUR D' ALENE H. S.	$\frac{1}{2}$
Stephen L. Sala	2	Barry Nelson	0
Donald Britt	2	George Crumb	0
Fred Pettit	2	Dick Jurvelin	0
Jim Williams	2	Stan Hughes	0
Frank Albertini	$1\frac{1}{2}$	Bob Peterson	$\frac{1}{2}$

### CHESS BITS

In the recent State Championship DR. MURRAY met DAN MADE in the first round. An hour on Dr. Murray's clock passed while 8 moves were made yet the two had recent contests with the same opening at 40 and 35 moves per hour! The luxury of 40 moves in two hours was just too much for the good doc to pass up! He paid the piper a bit later however. With only 10 minutes left on his clock, he found he had about a dozen moves left to make. About this time he made his only serious offensive gesture of the game. Frantically, the doc missed the saving move & was soon forced to resign.

# 'FRISCO FARCE

The following ironic story could happen only in the chess world. There may be some who could laugh at it, but we find it very sad.

36 players turned out to compete for the San Francisco chess championship. The players were evenly divided into six round-robin tournaments of six players each. ADDISON (5-0), PAFNUTIEFF (5-0), BURGER (4-1), LESLIE TALCOTT ( $4\frac{1}{2}-\frac{1}{2}$ ), JAMES J. MURRAY ( $4\frac{1}{2}-\frac{1}{2}$ ), and DR. K. M. COLBY and CHARLES SVALBERG (each  $4\frac{1}{2}-\frac{1}{2}$ ) won sections 1 to 6 respectively with the last two co-winners of section 6. COLBY withdrew due to illness, leaving the remaining 6 to battle it out for the 'Frisco championship.

The championship section was known as the Master's, while the remaining players qualified for the Experts, Class A, Class B, Class C, and Class D finals.

ROBERT A. KARCH, WCF Ratings official, for example, finished last with  $\frac{1}{2}-4\frac{1}{2}$  in the Section 3 round-robin won by ROBERT BURGER, thus qualifying for the Class D finals.

With various players withdrawing due to illness (?), each section did not have 6 players in the finals. Class D had 5, and Karch won the event with  $3\frac{1}{2}-\frac{1}{2}$ . R. TRENBERTON won Class C with  $2\frac{1}{2}-\frac{1}{2}$ , G. FARLY & F. ROSENTHAL were co-winners of Class B with equal  $4\frac{1}{2}-1\frac{1}{2}$  scores. ARTHUR WANG scored  $3\frac{1}{2}-\frac{1}{2}$  to win Class A. J. R. KALISCH scored 4-0 to win the Expert's event. Each winner took home a trophy.

Now to the ironic part of the tale! In the Master's section for the championship, JAMES J. MURRAY & WILLIAM G. ADDISON ended tied for first each with 3-2. They drew their individual game. Murray won 2, drew 2, and lost a game to BURGER. Addison finished with the unusual record of 1 win (over Burger!) and 4 draws! Burger & WALTER PAFNUTIEFF tied for third with  $2\frac{1}{2}-2\frac{1}{2}$ . On the bottom were SVALBERG & TALCOTT with 2-3.

In the playoff between the co-leaders played some while after the end of the regular tourney, the game between Murray and Addison was adjourned in a doubtful position. ADDISON declined to continue the two game playoff awarding the title by forfeit to MURRAY! A highly unsatisfactory finish.

# LETTERS TO YE ED

MR. JACK STRONG, BOX 214, GRESHAM, OREGON  
AIRS HIS OPINIONS ON OPEN.

Dear Editor:

It is to be expected that wood pushers are slightly, or more so, pixilated. Perhaps that explains why I caught a bus at 12:40 a.m., arrived in Seattle at 5 a.m., ate breakfast, and walked in the rain arriving at 7:30 a.m. at the U. of Seattle lounge to play in the Washington Open.

The honorable tournament director, along with several other pixilated characters, showed up at that time also. I informed said director I would like an early start as I noticed the schedule required two completely filled days for six rounds and I would like to get through early enough that night (Saturday) to see some relatives I hadn't visited in eight years. He said he thought it could be arranged as they hoped to get the rounds concluded earlier. I asked him to pick an opponent and get me started. He mumbles something about ratings and pairings and needing to get a few names down. He says "Do you have a Northwest rating?" I have to answer no which immediately places me with the barnyard stock. I'm helpful, so when he sez it will help placing me after the first two rounds if I lose both games, I venture to point out that when I played in Portland about eight years ago, I was around board five. He brightens up a little and reflects I might come in as high as fifteenth.

Some two hours later at 9:30 the hall is filled with players and play is apt to begin any hour. By this time, as you might surmise, I am beginning to suspect I have fallen in with a group who are conducting some regional ceremony so I decide to ask a point-blank question as I detect the run around has been passed my way. So I find there is a mysterious bunch of numbers adjusted Harkness, Preakness and lead weights to you which are shuffled after every round and all players must finish before any new round can begin and such a wonderful mathematical device would take until midnight, and certainly it is delightful fun except for one slight error which I pointed out to said tournament director. A mathematical system requires facts, not fancies, & with

unknowns (there were several who were not in the current numbered cult of cultists) the system was faulty. On receiving assurance that the system was God, I withdrew on the basis of first being an atheist, second as a former president of the Portland Chess Club with certain responsibilities to the promotion of sane chess, and third as a member of the USCF with a rating of 2054.

It is noted the tournament began at 9:30 or thereabouts when scheduled for 9 and that following the most sacrosanct of matching numbers and pairings and beginning of sanctified play, a couple of late starters came in and began the first round by the happy choice of both being late. I talked briefly with both of the late arrivals as one was from Portland and I had known him from the old days of Jim Schmitt Alex Suchobeck and other potzers who wandered to California as I did. The other is a well known chess master whom I had always wanted to meet as we are both friends of Arthur Dake. Certainly these 2 should be playing. As for the false system being locally used for tournament play, it is pure poppycock.

(Mr. Strong also mentioned he once played in a Washington tournament which was fun as he came in second by beating Joachim.)

---

MR. R. G. SPENCER, BOX 51, BENTON CITY,  
WASHINGTON TELLS ABOUT TRI-CITY CHESS.

While I am not actively playing chess at present, I remain very interested in chess activities around the state and especially in our tri-city area.

Chess is now blossoming in this area like it never has before. Through the efforts of FRANK COOPER and ELMER HOVERMALE, both of Richland, the Tri-City Chess Club is maintaining an active playing list of 16 to 20 and many more are playing part of the time.

Kennewick High School has a real interested group of boys playing under the guidance of a teacher. Also I understand 26 boys turned out in one of the Richland schools to start playing and form a team.

Presently ELMER HOVERMALE is president

R. W. CAIRNCROSS HAS A FEW WORDS ON THE WASH. OPEN AND PORTLAND CHESS.

I had a good time at the Wash. Open. It was run much smoother than the Seafair and they had a wonderful place to play being much better than the YMCA.

Last night (written Feb. 1st) was election night at the Portland Chess Club. (For details, see Portland Chess News) The election kind of cleaned house. We still have some friction though with the tournament director, DON JOHNSON. He thought all tournaments should be sponsored by the U. S. Chess Federation. However, Portland Club officers would not go along with him. On the Portland Golden Rose Tournament, the club went 85 dollars in the red. There was a 5 dollar entry fee but 4 dollars of each entry went to the USCF. About six months ago JOHNSON quit the Portland Chess Club and is now putting on a tournament of his own (see tournament page). I am enclosing a clipping on it. Portland C. C. has nothing to do with it.

I think we should support the USCF, but as for the national ratings we have the same thing in BOB KARCH'S ratings in the Wash. Chess Letter only it looks to me like Karch's ratings are more up to the present. By the way, I think Karch deserves a lot of credit for all he does. He must put in a lot of time putting out those ratings.

I don't know why I didn't start playing in tournaments a long time ago. Played chess 25 years before I ever tried it. Now I find I enjoy them. I used to think the tournaments were just for the big shots. I find if I get stuck with a big shot I can lose my game and in the next round maybe get some one in my class. I also have met some very nice people at the tournaments. (8084 N. E. Grand Avenue, Portland 11, Ore)

JACK NOURSE, C/O AMERICAN CONSULATE, IN GUADALAHARA, JALISCO, MEXICO writes:

Well here I am making history for Washington chess. Though this is the 2nd largest city in Mexico, their chess players are 2nd from the bottom in their league. I almost missed joining their top ranking club as at first glance it looked entirely too small and crummy for even a chess club who are notorious for their fondness for tacky surroundings.

This club is not to be compared for crumminess with the one in New York City, as the floors are clean and there is a minimum of cigarette butts, paper wrappers, etc. on the floor but the tables & pieces leave quite a bit to be desired.

My brand of chess here approximates my very worst type of chess at home, yet I have been winning from everyone I have played, except one. They don't know the openings too well and their Campeone does not play a standard game but he is taking me about two to one. I don't think this player should win from me and try to explain away the defeats by the fact that I am missing so much. Due to travel, different food, excitement, I suppose. Still I would say that any of the top board men in the Puget Sound League would never be defeated once in match play.

They have been playing in a league here exactly like our PSL except the 5 players on a team play only one game. The teams play as states with Distrito Federal (Mexico City) on top and Jalisco (my friends) second from the bottom. A rating list is tacked on the wall which contains 200 rated players. The highest is 1640 while the highest Jalisco player is only 900. Note that this rating list represents all the chess players of note in all of Mexico.

They are a very friendly and jovial lot and indulge in much kidding. I just know a few elementary words and miss a lot of their fun. Typical Mexican is the tourney they invited me to play in. After a week of planning and talk, I was to be told on Friday where to meet on Saturday morning. At 11:30 Friday night I went home while they were still discussing with great animation the tournament for tomorrow. Result was - no tournament.

One interesting feature about chess here is that playing country wide a team must travel an average of 200 miles for a match. 5 hours driving at least.

There is a very fine chess salon conducted in the old European style - in a restaurant. This is a very nice restaurant and they have about 10 lovely tables and fine wooden pieces. This club is open all day and the fee is 40 cents monthly! BUT - all the best players haunt the crummy place & chess at the elite place is pretty elementary.

# CORNELIUS, GROENIG TIED FOR 1ST

DR. DAVID GROENIG and GORDON CORNELIUS tied for first with 5-1 scores in the 1959 Spokane City Chess Championship Tournament. Only eleven played as a heavy snow storm on the first night of the tourney held down the number. At least 15-18 players were expected to play.

DR. GROENIG and CORNELIUS will have a playoff match for the title. That is the procedure for the Spokane City Tournament. DR. GROENIG almost backed into the title, as CORNELIUS was out of town and had to forfeit a game to DR. ALDAPE. This brought his score down to the same as DR. GROENIG whom he had defeated in the fourth round.

Two rounds each were played on January 22nd, 29th, and February 5th. CORNELIUS got back into town just in time to play his last round game with DR. MAVERLY ELLSWORTH, after having to forfeit to DR. ALDAPE. DR. GROENIG would otherwise have won the title out right as he defeated ROBERT KITTREDGE & ALDAPE in the final session.

The Spokane Club is averaging only 6 to 8 players at their weekly meetings. There should be more in a city of 200,000 people. Perhaps Spokane needs a good publicity man.

Place	Name	-1-	-2-	-3-	-4-	-5-	-6-	W	L	D	Score	Med.	Solk.
1.	Dr. David Groenig	W7	W8	W3	L2	W4	W5	5	1	0	5 -1		
2.	Gordon Cornelius	W10	W3	W4	W1	LF5	W7	5	1	0	5 -1		
3.	Sgt. Jess Tugglo	W5	L2	L1	W10	W8	W6	4	2	0	4 -2	12	18
4.	Robert Kittredgo	W6	W9	L2	W5	L1	W11	4	2	0	4 -2	12	17
5.	Dr. Hector Aldape	L3	W6	W7	L4	WF2	L1	3	3	0	3 -3	13	
6.	George Priebo	L4	L5	W9	W11	Byc	L3	3	3	0	3 -3	10	
7.	Dr. Waverly Ellsworth	L1	W11	L5	Byc	WF10	L2	3	3	0	3 -3	9	
8.	Dr. Griffith Parker	W11	L1	L10	W9	L3	Byc	3	3	0	3 -3	7	
9.	Steve Stencerson	Byc	L4	L6	L8	W11	WF10	3	3	0	3 -3	5	
10	James Delananty	L2	Byc	W8	L3	LF7	LF9	2	4	0	2 -4		
11	James Waugh	L8	L7	Byc	L6	L9	L4	1	5	0	1 -5		

*by Kittredge*

## COMING EVENTS

### WASHINGTON STATE JUNIOR

OPEN TO ALL PLAYERS UNDER 21

ENTRY \$2.50

SAT., SUN. MARCH 21-22nd.

5 ROUND SWISS

PLACE: U. OF WASH.

STARTS AT 10 A.M.

\$\$\$ CASH PRIZES : \$\$\$

LAST YEAR'S CHAMP - CHARLES GRIFFITHS

### PACIFIC NORTHWEST OPEN

USCF SPONSORED EVENT

ENTRY FEE \$5

ALL PLAYERS MUST BECOME USCF MEMBERS.

SAT. & SUN. MARCH 28 & 29th.

STARTS AT 9 A.M. SHLRP IN PILOT HOUSE  
AT UNIVERSITY PORTLAND.

4 HOT MEALS PROVIDED FOR ONLY 3 DOLLARS

EIGHT TROPHY AWARDS - 1ST., 2ND.,  
3RD., JUNIOR, WOMAN, B, C, AND  
UNRATED.

DON W. JOHNSON, TOURNEY DIRECTOR



-----  
' FUNDAMENTAL '   
' CHESS STRATEGY AND TACTICS '   
' BY '   
' Richard P. Allen '   
-----

Part 111

MIDDLE GAME

A. Strategy

1. Centralize the action of all pieces. (Efficiency, Power.)
2. Integrate moves into definite plans, changing plans as expedient but never play aimlessly or mark time. (Efficiency.)
3. Adopt the habit of looking for a weakness to spark the attack. (Attack against strength is foredoomed.)
4. If your opponent has one or more pieces exposed, look for a combination. (Exchange protecting pieces while attacking protected pieces.)
5. Be sure a piece brought up to support an attacked piece or position can not be forced away or exchanged. (All combinations are based on a double attack.)
6. In cramped positions free yourself by exchanging. (In general, exchange evenly rather than retreat from an untenable position.)
7. Try to limit your opponent's choice of moves by setting up series of problems demanding immediate attention for his safety. (Increase your probability estimate accurately.)
8. When ahead in potential, material, force, whichever you prefer to call it, exchange evenly as much as possible. (To increase relative advantage.)
9. Never sacrifice without a clear and logical purpose in mind. (Sacrifice is justified only when a powerful attack on the King is made possible or where retention of the initiative enables future advantage, recovery or safety.)
10. Unless there is a net advantage when capture is threatened, defend or interpose, move away or capture evenly elsewhere, pin the attacker or counter-attack. Any thing but allow a net power loss. (The best defense is a good counter-attack.)

B. Tactics

1. Do not expose your King while the Queens are still on the board. (Advance pawns create weakness, particularly on the castled King's side, inviting attack.)
2. Try to open up a file or diagonal for attack on the King by your heavy pieces.
3. Avoid pinning the opponent King's knight before he is castled, especially if your King is castled on the King side. (This might result in the opening up of a file on your castled King for rook mobilization.)
4. Do not always take a free pawn in front of the King; it may obstruct attack by heavier men.
5. Avoid discovered check; it is usually the channel for combinations resulting in loss of material or worse.
6. When checked, defend the King if possible with a piece that counterattacks.
7. Lining up the rook and King on a long diagonal invites a pinning attack by a Bishop with a resulting loss in material and power. (The Queen is even more vulnerable to this type of combination, acting on the file or rank as well as a diagonal.)

This discussion on Tactics in the Middle Game will be continued next month.

# 10 YEARS AGO IN WASHINGTON CHESS

by Merk

Taken from March 1949 W. C. L.

An editorial by the Editor, Larry W. Taro announced that for personal reasons he found it necessary to resign his position. He had been Editor for the previous two years.

No successor was announced to take Taro's place but he stated that he felt sure that the publication would be able to continue under the guidance of the publisher, Peder Husby with the help of Richard P. Allen, T. Patrick Corbett, Jim Schmitt and Neil Power. It is interesting to note that of this group only one is still carrying on in an official capacity with the Washington Chess Federation and that is Peder Husby, who is our present Treasurer.

It was announced that Olaf Ulvestad was to give a simultaneous exhibition on March 4th at the Assembly Hotel. It was expected that there would be at least 40 boards. A fee of \$1.00 was charged for players and 60¢ for spectators.

Larry Taro and Neil Power, finished in a tie for first place in the Everett Chess Club tournament. Third place went to J. A. Naas, fourth to John Beal and the fifth place to Peder Husby. The first place tie was to be played off with a ten game match. First place prize was a perpetual trophy and a hand carved chess set made by Peder Husby.

Seattle Chess Club officers elected were T. Davidsen, President, C. E. Shurman Vice-president, Ben L. Carson, Sec.-Treasurer, Jack Finnegan, tournament director, and C. C. Bushnell, director.

Everett Chess Club officers were announced as J. A. Naas, President, E. J. Tweeddale, Vice-President, Peder Husby, Sec.-Treas. and J.A. Nass, W.C.F. director.

Arthur Dake was announced as definitely a competitor in the forthcoming PNW Master-Expert tournament as well as Olaf Ulvestad, Jim Schmitt and Chas. Joachim. British Columbia invitations had not yet been acknowledged. Date set as Apr. 2 & 3.

Another "B" tournament between Kitsap Chess Club and the Navy Yard Recreation Association was announced.

A new chess club was being organized in South Tacoma, with the first meeting scheduled for March 2, 1949.

Washington Speed Tournament was set for March 27th at the Seattle Chess Club with an entry fee of \$1.50.

The final installment of Olaf Ulvestad's trip to Russia as a member of the United States Chess team scheduled to play a tournament with the Russian team told of the result of that tournament being  $12\frac{1}{2}$  for the Russians to  $7\frac{1}{2}$  for the U. S.

His first opponent was a 21 year old man by the name of David Bronstein who had placed third in the all Russian championships of 1945. Olaf describes him as a prematurely bald, quiet, polite and reserved person who gave the impression of being a quiet self-confident man. Olaf was greatly surprised when his opponent took 15 minutes to make his first move in answer to Olaf's first move. This first game was adjourned twice and took  $14\frac{1}{2}$  hours of playing time to make the 118 moves. Olaf made a losing move on his 98th move and finally had to resign. The second game with this opponent went for 40 moves with Bronstein resigning to Ulvestad.

Following the completion of the tournament there were two formal receptions held for the Americans. One by the American Embassy and the other by the Soviet Society for Cultural Advancement (Voks.)

A Russian plane flew them to Stockholm and from there they returned to the U.S. by steamship via London and Southampton.

# POSTAL CHESS

R.R. MERK, Director -  
1026 E. 71, SEATTLE 15,



Reports of games completed to 2/28/59						Points
1/29/59	57A-6A	Woodward	1	Mage	0	56
2/1/59	58B-3A	Lee	1	Devenere	0	36
	58B-3A	Lee	1	Kunkle	0	53
	58B-3B	Lee	1	Kunkle	0	53
	58B-3B	Lee	1	Devenere	0	36
2/2/59	58A-8A	Mills	1	Cairncross	0	36
	58B-6A	Abrahamson	1	Sala	0	24
2/3/59	58A-3A	Bever	1	Gemar	0	36
	58A-1B	Gemar	1	Bever	0	64
	58A-3A	Gemar	1/2	Husby	1/2	2
2/5/59	58A-5B	Eilmes	1	Carter	0	62
	58A-6A	Eilmes	1/2	Carter	1/2	12
2/12/59	58B-7B	Zombro	1/2	Fredstrom	1/2	30
2/13/59	58A-8B	Collins	1	Skarsten	0	76
2/16/59	58B-4B	Robertson	1	McCord, D.R	0	46
	58A-8A	Phillips	1	Collins	0	18
2/17/59	58A-6A	Carter	1	Howard	0	26
2/18/59	58A-2A	Luters	1	Mills	0	42
	58A-2B	Luters	1	Laine	0	8
	58A-6A	Eilmes	1	Merk	0	8
	58A-6B	Eilmes	1	Merk	0	8
2/20/59	58B-7B	Benson	1	Fredstrom	0	72
2/23/59	58A-8A	Phillips	1	Skarsten	0	28

	58A-2A	58A-2B	Points
Phillips	x 1 1 1 1	x 1/2 1 1 1	7 1/2
Luters	0 x 1 0 1	1/2 x 1 0 1	4 1/2
Mills	0 0 x 1 1	0 0 x 1 1	4
Scripps	0 1 0 x 1	0 1 0 x 1	4
Laine	0 0 0 0 x	0 0 0 0 x	0

Phillips almost made a perfect score in this section. Luters marred it for him by drawing in his 58A-2B game. Phillips has elected to take on two more POSTAL sections as his prize.

Luters, Knapp and Phillips have entries in, waiting for a couple more players in their class to get a good section going. If some of our players with a rating of 1500 or better could come in, it should make a red hot section. We will be watching the mails for them.

Also Fredstrom and Husby have sent in entries for an "A" section and we would like to see three of our "A" players with a rating below 1400 come in so as to make an even section for them.

Al Benson issues a challenge to a 6 game match with anyone in his rating class, which is 1274, Such a challenge match to be rated on our postal rating chart requires an entry fee of 50¢, the same as for a section.

Rev. Alfred Carter is issuing a challenge to Skarsten for another 6 game match. Their previous 6 game match finished with Skarsten taking 4 of them and it is just possible that Carter wants to try to even up the score. If Skarsten will accept, he is to start his three games as white at once and notify the Postal Director by sending in his entry fee of 50¢. Carter also issues a challenge to Weaver for a 6 game match. Boy! what a chess fiend. He must take time out for meals as our last view of him showed him to be very healthy appearing.

# PLAY CHESS BY MAIL

One of the best ways to improve your chess skill—and to have a fine time doing it—is to play chess by mail. If you have not yet taken part in our Postal Tournaments you are missing a lot of fun and valuable experience.

You need no experience to play postal chess. There is nothing mysterious or difficult about it. It is played the same way as over-the-board chess—except that you send your moves or post cards. Complete rules and instructions are mailed to each new player.

Postal chess players are issued numbered ratings. Eventually, this rating will depict your chess ability, compared with other players'. We keep track of your wins, draws and losses, adjusting your rating accordingly.

Return postage guaranteed  
Form 3547 requested

WASHINGTON CHESS LETTER  
1026 E. 71, SEATTLE 15.

F. H. Weaver  
501 Olympic Place  
Seattle 99, Wash  
2/60

SEATTLE, WASH. (1)



## POSTAL CHESS RATINGS

### "A" Division

1	Wade	1913
2	Phillips	1865
3	Weisscher	1802
4	Weaver	1785
5	Woodward	1732
6	Coubrough	1701
7	Mage	1683
8	Vellias	1674
9	Bishop	1672
10	Knapp	1670
11	Eilmes	1653
12	Carter	1633
13	Lyberger	1610
14	Kaffenberger	1608
15	Scripps	1594
16	Skarsten	1588
17	Luters	1566
18	Collins	1488
19	Abrahamson	1464
20	Karch	1422
21	Koenkow	1422
22	Smith	1419
23	Roberts, D.	1410
24	Dolph	1400
25	Parsons	1400
26	Mills	1387
27	Roberts, H.	1384
28	Bever	1382
29	Fredstrom	1350
30	Howard	1336
31	Husby	1311
32	Kuvara	1304

### "B" Division

1	Gemar	130
2	Hall	129
3	Tuggle	128
4	Bowerman	127
5	Benson	127
6	McDonald	125
7	Lee	124
8	Robertson	124
9	Dart, Ken	124
10	Gifford	122
11	Cairncross	122
12	Skoglund	121
13	Merk	120
14	Zombro	119
15	Litke	118
16	Spatz	117
17	Sala	115
18	Miller	115
19	Lydic	115
20	Nichols	114
21	Watson	113
22	Raleigh	112
23	McCord, D.R.	111
24	Adkisson	110
25	Allen	109
26	Laine	108
27	Quass	108
28	Cox	105
29	Dart, E.	105
30	Fellows	105
31	Hazen	105
32	Hallibaugh	105
33	Mahoney	105
34	Pifley	105
35	Raymond	105
36	Rogers	105
37	Sawyer	105
38	Henry	101
39	Munselle	101
40	McCord, R.S.	100
41	Cooper	100
42	Kunkle	94
43	Bothun	87
44	Devenere	80