

WASHINGTON

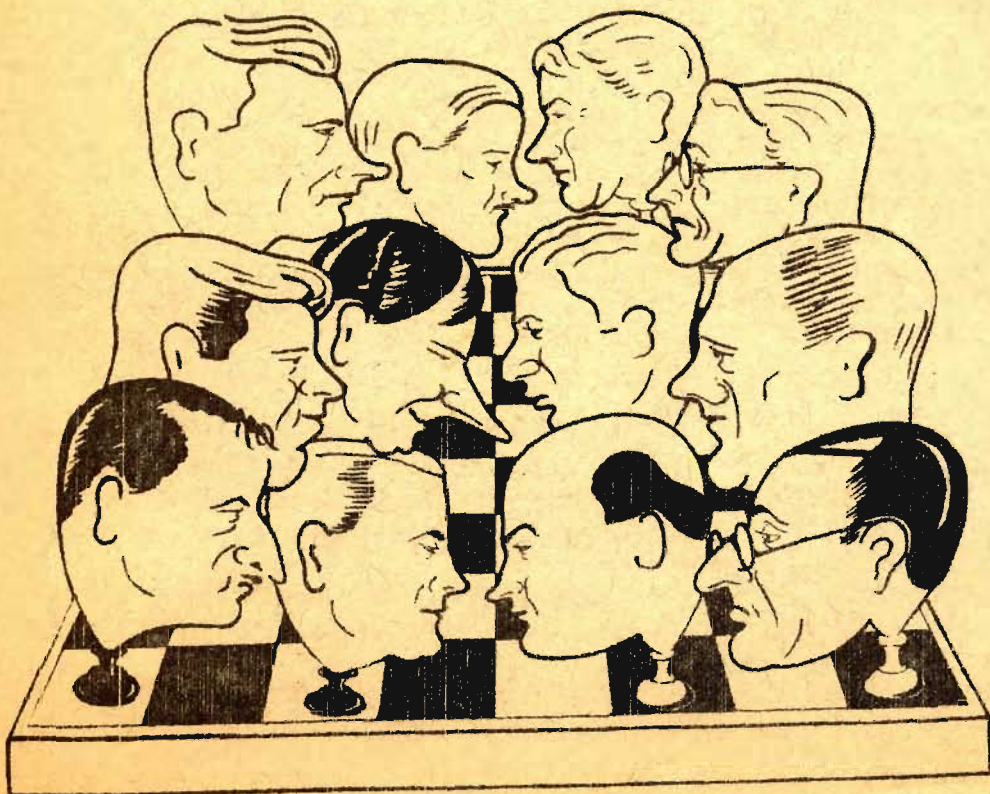
CHESS

LETTER

*KARCH'S
Northwest
RATINGS*

AUGUST 1958

**SEAFAIR
AUG. 2-3**



*HELP WANTED
at the International
Match, Aug. 10*

SEAFAIR AUG. 2-3

WCF Tournament Director ALFRED LIVINGSTON of Olympia has booked the large Colman Room in the YMCA for the SEATTLE SEAFAIR on Saturday and Sunday, August 2nd and 3rd.

One day "B" and "C" events for the players who can play only one day are to be held along with the main event. Entry into these tournaments will be \$1.50. A trophy goes to each winner.

The main event will be a two day, six round Solkoff Swiss with 40 moves in one & a half hours with adjournment following. No adjudication unless absolutely forced.

Players who play those who later drop out will be protected. $\frac{1}{2}$ point for every forfeited loss will be added to the forfeiting player's score for his opponent's Solkoff total. This will not benefit the offending player, only his opponents. The scores of those who receive forfeits will have their score reduced by $\frac{1}{2}$ point each forfeit for Solkoff tie-breaking purposes.

We hope there will be no forfeits! Do not enter unless you are willing to play all six rounds.

Starting time is 9 a.m. Saturday while Sunday's starting time for the 4th round is 8:30 a.m.

Juniors can get in for \$2 if they are 18 or under. (Last month we erred with under 18.) Regular adult entry fee is \$3. The junior players are not playing for any junior prize (unless donated) but for the Seafair money prizes. First prize is guaranteed to be at least \$25. Other prizes will depend on the number of entrants and expenses.

WCF Publicity Director FRED HOWARD has done a splendid job of spreading the word. He has had notices in Chess Review, daily press and elsewhere, plus notices by mail.

VERY IMPORTANT! Please bring boards, chess sets, and if possible, chess clocks.

JIM MCCORMICK and VIKTORS PUPOLS were co-winners of last year's big Seafair tmt.

WASHINGTON CHESS LETTER

OFFICIAL PUBLICATION OF
Washington Chess Federation

EDITOR

D. E. WADE 11023 25th N. E. SEATTLE 55

PUBLISHER

F. H. WEAVER 501 OLYMPIC PL. SEATTLE 99

CIRCULATION

R. R. MERK 1026 E. 71st SEATTLE 15

MEMBERSHIP DUES, \$2.00 A YEAR, INCLUDES SUBSCRIPTION (12 ISSUES). SEND MONEY TO W.H. RALEIGH, TREASURER, 4312 WOODLAND PARK AVENUE, SEATTLE 3, WASH.

W.C.F. OFFICERS

PRESIDENT, DR. GRIFFITH H. PARKER, SPOKANE
VICE-PRESIDENT, MAX MAGE, SEATTLE
SECRETARY, PEDER HUSBY, EAST STANWOOD
RATING DIRECTOR, ROBERT A. KARCH, USAIC
TOURNAMENT DIRECTOR, Al Livingston, Olympia
Robert Kittredge, Spokane
PUBLICITY DIRECTOR, F.M. HOWARD

SEATTLE CLUB NEWS & BLUES--

On another page in this issue, Weaver writes about "Chess Club in Distress." The Chess Letter Editor has soon the club in a much worse situation. Almost every month Yo Ed would need 15 or 20 dollars to meet the rent with only two or even one week to go. The rent was \$20 per month higher too.

If the new officers got on the ball they should have no trouble raising rent. The club can hardly blame an uptown commercial venture or a rash of neighborhood party groups for its troubles. If the officers use a little more energy raising dues, doing the jobs they are elected to do, we should soon see a strong, healthy club.

RAPID TRANSIT TOURNEY

WALT CONNER, who directed, won a club speed event on July 11th scoring 6-0. DON COREY was second with 5-1. Other scores: DON CAMERON 3-3, TONY DASTOLI 3-3, MAX BADER 2-4, MR. CASE 1-5 and LLOYD LEWIS 1-5.

Present at "panic" meeting were: BADER, WEAVER, CONNER, GELL, HENION, HOWARD, COREY, PORRAY, SCHROEDEL, DAVIDSEN, FREDRICKSON,

JUNIOR CHESS

INTERNATIONAL

AUGUST 10

WALT CONNER WINS SIMULTANEOUS 10-4

WALT CONNER played seven juniors two games apiece in a simultaneous exhibition, Saturday, June 21st, at the Seattle Club.

Conner won 2-0 over DAVE GRANNIS, WILLY BRANDAL and JOHN SCHROEDEL. He defeated PHIL MOORMANN $1\frac{1}{2}-\frac{1}{2}$, downed BUZ EDDY $1\frac{1}{2}-\frac{1}{2}$, broke even with BILL WILLENBERG 1-1 & lost 0-2 to DON COREY. Total: 9 wins, 2 draws & only 3 losses in the 14 games.

BOB KARCH - JUNIOR SIMULTANEOUS

WCF Rating Station ROBERT KARCH won 3-2 against 5 juniors and lost 0-2 against 2 seniors in a simultaneous exhibition held on Saturday, June 28th at the Seattle Club.

Our statistician expert (in statistics) downed WILLY BRANDAL, JOHN SCHROEDEL and DON ELLIOTT and lost to DAVE GRANNIS and EDDY.

Karch lost a pair to non-juniors, WALT CONNER (who posed as junior "Joe Porter") and ED DIEDRICH. Possibilities of playing each junior a second game were hurt when Schroedel wanted to leave to go bowling.

SEATTLE NON-LEAGUE CHESS MATCHES

Roosevelt High School wanted competition for its school chess team. They got it! In a pair of matches, Roosevelt lost 0 to 10 to West Seattle and 2 to 8 to Garfield. More details next issue.

IDAHO JUNIOR ACTIVITY

We already have some Idaho junior activity reported in our IDAHO CHESS column in this issue.

Enlarging a little, we report that the Sandpoint Club President, BRUCE FREDSTROM & the Wallace Club President, STEVE SALA, engaged in a 23 game match, with FREDSTROM the winner by a very close 12 to 11 score.

Correspondence between the Northwest Jr. Federation and Idaho junior chess leaders in recent months shows a desire in Idaho for a junior league. SALA and FREDSTROM have high hopes for a four team league for the 1958-59 season.

BY JOHN SCHROEDEL.

The 15th Annual International Match between Washington State and British Columbia is scheduled for SUNDAY, AUGUST 10 at ONE P. M. PACIFIC STANDARD TIME.

The location is Seven Cedars Pavilion on highway 99 about a mile north of Mount Vernon. Only one game is played by each player against his B. C. opponent. \$1 entry. Washington, as host, has the black pieces on the odd-numbered boards. VERY IMPORTANT! Bring men, boards, and if possible - clocks. N. W. Ratings will be used to determine seatings on our 30-player "A" team and 15 (or larger) player "B" team. B. C. won the Peace Arch trophy and "B" plaque last year at the border crushing our inadequate team 22-8 in the "A" section & edging past our "B" squad $7\frac{1}{2}-6\frac{1}{2}$.

PAST RESULTS OF "A" MATCHES

1st - Washington	lost to D. C. (Score-?)
2nd - Washington	$43\frac{1}{2}$ B. C. lost $27\frac{1}{2}$
3rd - Washington	$38\frac{1}{2}$ B. C. lost $22\frac{1}{2}$
4th - Washington	$11\frac{1}{2}$ B. C. won $16\frac{1}{2}$
5th - Washington	15 B. C. drew 15
6th - Washington	$17\frac{1}{2}$ B. C. lost $12\frac{1}{2}$
7th - Washington	17 B. C. lost 13
8th - Washington	$14\frac{1}{2}$ B. C. won $15\frac{1}{2}$
9th - Washington	$11\frac{1}{2}$ B. C. won $18\frac{1}{2}$
10th - Washington	18 B. C. lost 12
11th - Washington	22 B. C. lost 8
12th - Washington	$12\frac{1}{2}$ B. C. won $17\frac{1}{2}$
13th - Washington	21 B. C. lost 9
14th - Washington	8 B. C. won 22

TOTAL: WASHINGTON 7, B. C. 6, Drawn 1.

The first match was played shortly after World War II in 1945. The 2nd match in 1946 was followed by the 3rd and 4th matches both played in 1947. Matches have been held once a year since. The 2nd 1947 match or 4th International, was the first for the Peace Arch Trophy where the teams were divided into two sections - "A" top 30 boards and "B" - remaining boards.

In between the big summer International matches there will be smaller Master & Expert Team Matches. Washington recently won the opening match of this new series by a $5\frac{1}{2}$ to $2\frac{1}{2}$ score. The match was played on June 22nd.

BY D. WADE

HEWITT WINS PIERCE COUNTY TITLE

CHARLES HEWITT of Tacoma won the 1958 Pierce County Championship Tourney, scoring 4-1 in the 12 player, five round Swiss preliminary and scoring 3-0 in the 4 player round-robin finals.

In the preliminary tourney, DICK SOMSEN, CHARLES HEWITT and VERNON HOLMES finished with 4-1 scores. Hewitt beat Holmes, Holmes beat Somsen, and Somsen beat Hewitt.

Unfortunately for the tournament, SOMSEN had to make preparations for a trip to his native Holland and so could not play in the four-player championship finals.

The junior championship winner was 4th place finisher SCOTT LOCKHART who beat both AL COOK and JOE KING in the junior playoff. In his third round game with Somsen, Lockhart was a piece ahead but his flag fell as he was reaching to make his time-check-point move! This was the only time-forfeiture of the tournament.

No method of tie-breaking was agreed on in the pre-tournament club meeting so Solkoff points in the scoring table are unofficial.

The tournament was played on five successive Friday nights. The playoff tourney took three more weeks. The story was misplaced by our Tacoma correspondent and only recently discovered. The finals were completed in the latter part of last April!

OLYMPIA NEWS

The Olympia Chess Club played two matches recently, Olympia downing Fort Lewis 7-5 and one week later losing to Shelton 2 $\frac{1}{2}$ -3 $\frac{1}{2}$.

Played Juno 30th

OLYMPIA CHESS CLUB	7	FORT LEWIS TEAM	5
Charles Joachim	2	J. Gatza	0
Harry Parmelee	2	M. Reichman	0
Otto Hintz	0	W. Dixon	2
Al Livingston	0	G. Stanley	2
H. Kramer	1	W. Flynn	1
Doyle Egg	2	M. Snarr	0

Played July 7th

OLYMPIA CHESS CLUB	2 $\frac{1}{2}$	SHELTON CHESS	3 $\frac{1}{2}$
Phil Stymans	$\frac{1}{2}$	Lucky Larson	1 $\frac{1}{2}$
Al Livingston	0	Alex Smith	2
H. Kramer	2	L. C. Durwald	0

DATA BY AL LIVINGSTON

TACOMA OPEN

SPONSORED BY THE TACOMA CHESS CLUB
9:15 a.m., Saturday Aug. 23, and Sunday
FIVE-ROUND SWISS, SOLKOFF TIE-BREAKING
Entry fees: \$3 Senior, #2 Junior
Oakland Field House, near Union Ave. and
Center St., Tacoma. Bring equipment.

PLACE	PLAYER	W L D	SCORE	SOLK.	-1-	-2-	-3-	-4-	-5-
1.	* Dick Somsen	4-1-0	4-1	12	W5	W2	W4	W6	L3
2.	* Charles Hewitt	4-1-0	4-1	12	W3	L1	W8	WF9	W6
3.	Vernon Holmes	4-1-0	4-1	11	L2	W5	W7	W4	W1
4.	Scott Lockhart	3-2-0	3-2	12	W9	W8	L1	L3	W7
5.	Carl Carlson	3-2-0	3-2	9	L1	L3	WF10	WF12	WF9
6.	* Al Cook	2-3-0	2-3	10	W10	W7	L9	L1	L2
7.	* G. Faithfull	2-3-0	2-3	10	W12	L6	L3	W8	L4
8.	Joe King	2-3-0	2-3	8	W11	L4	L2	L7	WF10
9.	Les Coubrough	2-3-0	2-3	8	L4	W11	W6	LF2	LF5
10	John Wheclor	1-4-0	1-4	3	L6	LF12	LF5	WF11	LF8
11	Gary Gunn	0-5-0	0-5	---	L8	L9	LF12	LF10	----
12	Ludwig Frank	0-5-0	0-5	---	L7	LF10	LF11	LF5	----

CHAMPIONSHIP TOURNEY					
1.	Hewitt	W2	W3	W4	3-0
2.	Lockhart	L1	W3	W4	2-1
3.	Holmes	L1	L2	W4	1-2
4.	Carlson	L1	L2	L3	0-3

DATA BY LOCKHART

* Unbreakable ties. Note: Once a game starts it can end only in a win, loss or a draw but not a forfeit win, or a forfeit loss. Losing on time does not make the game a forfeited loss or win, therefore.

BADER WINS SEATTLE CLUB TITLE

MAX BADER won the 1958 Seattle Chess Club championship with a score of $6\frac{1}{2}-1\frac{1}{2}$. His only loss was to VIESTURS SEGLINS, state champ, and he drew with DAN WADE. BADER defeated DAVID HARRISON, JOHN GELL, OLIVER MORRIS and DAVID ERICKSON. He also received one bye and a forfeit.

Tightly bunched behind BADER with 6 - 2 scores were DAN WADE, WALT CONNER and VIESTURS SEGLINS, with Solkoff points putting them in the order named. WADE amassed 37 Solkoff tie-breaking points losing only one game (to MORRIS) but drawing BADER and FREDRICKSON. WADE numbered DAVE GRANNIS, WALT CONNER, DAVID ERICKSON, and TOM MAKENS among his victims and had to take a forfeit win from COREY as he was nowhere to be found.

WALT CONNER lost to WADE and SEGLINS, defeated BROUGHTON, PUPOLS (!), MAKENS, FREDRICKSON and took forfeits from MCCORMICK and MORRIS.

SEGLINS lost to MCCORMICK and ERICKSON, downed WILLIAM GILLETTE, YOUNG, MIKE FRANETT, CONNER, and BADER and received a forfeit from the absent COREY.

JOHN GELL was the tourney director but it was assistant director TOM MAKENS who kept the tourney alive. At the half-way point so few of the original 24 entrants had played their games that he cut out all but the top 9 players. This group then finished out the tournament. The tourney started in late February & ended about the first of July - over 4 months!

Round 1.

McCormick 1	Seglins 0	Wade 1	Grannis 0
Conner 1	Broughton 0	Erickson 1	Gell 0
Gillette 1	Franett 0	Makens 1	Eddy 0
Fredricksn 1	Schroedel 0	Corcy 1	Shamaria 0
Young 1	Lohmeyer 0	Pupols 1	Hickey 0
Wilson 1	Ring 0	Bader 1	Harrison 0

Round 2.

Seglins 1	Gillette 0	McCormick 1	Pupols 0
Wade 1	Conner 0	Erickson 1	Morris 0
Makens 1	Fredricksn 0	Corcy 1	Ring 0
Franett 1	Grannis 0	Gell 1	Lohmeyer 0
Eddy $\frac{1}{2}$	Schroedel $\frac{1}{2}$	Bader won by forfeit.	
Lohmeyer 1	Shamaria 0	Morris 1	Gell 0

Hickey, Broughton, Vellias, Young, Wilson and Harrison didn't play.

Round 3.

Seglins 1	Young 0	Wade $\frac{1}{2}$	Bader $\frac{1}{2}$
Conner 1	Pupols 0	Ericksn 1	Makens 0
Gillette 1	Hickey 0	Fredrksn 1	Corcy 0
Morris 1	Wilson 0	Grannis 1	Broughtn 0
Eddy $\frac{1}{2}$	Ring $\frac{1}{2}$	Harrison 1	Shamaria 0

The other players did not play.

Round 4.

Seglins 1	Franett 0	Wade 1	Erickson 0
Makens 1	Corcy 0	Morris 1	Eddy 0
Grannis 1	Schroedel 0	Bader 1	Gell 0
Wilson 1	Shamaria 0	Fredrickson 1	(bye)

Conner won by forfeit over McCormick.
Eddy 1 Gillette 0

TOP SCORES

1. Wade $3\frac{1}{2}$	4. Fredrickson 3	7. Makens 3
2. Bader $3\frac{1}{2}$	5. Morris 3	8. Conner 3
3. Seglins 3	6. Erickson 3	9. Corcy 2

Round 5.

Seglins 1	Conner 0	Wade $\frac{1}{2}$	Fredrickn $\frac{1}{2}$
Erickson 1	Corcy 0	Morris 1	Makens 0
Bader 1	Morris 0		

Round 6.

Seglins 1	Bader 0	Morris 1	Wade 0
Fredrickson 1	Erickson 0	Conner 1	Makens 0
Corcy 1	(Bye)		

Round 7.

Erickson 1	Seglins 0	Wade 1-0	Corey by forfeit.
Conner 1	Fredrickson 0	Both Bader and Makens scored with a Bye. (Instead of playing each other!)	

Round 8.

Wade 1	Makens 0	Bader 1	Erickson 0
Fredrickson 1	(Bye)		

Conner won by forfeit from Morris and Seglins won by forfeit from Corcy.

FINAL STANDINGS

Place	Player	W L D	Score	Solkoff
1.	Max Bader	6-1-1	$6\frac{1}{2}-1\frac{1}{2}$	24.0
2.	Daniel E. Wade	5-1-2	6 -2	37.0
3.	Walt Conner	6-2-0	6 -2	29.5
4.	Viesturs Seglins	6-2-0	6 -2	26.5
5.	Archie Fredrksn	5-2-1	$5\frac{1}{2}-2\frac{1}{2}$	24.5
6.	David Erickson	5-3-0	5 -3	37.0
7.	Oliver Morris	5-3-0	5 -3	32.5
8.	Tom Makens	4-4-0	4 -4	32.5
9.	Don Corcy	3-5-0	3 -5	27.0

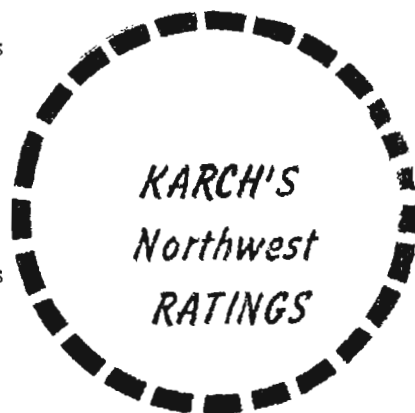
"Expert" Candidates!

open to 6 or more NW-rated-Class-A players as per last published ratings (other rating systems do not qualify) THE CLEAR WINNER (no ties) IN 5 OR MORE ROUNDS BECOMES A RECOGNIZED EXPERT IN NORTHWEST RATINGS for at least six months.

Tournaments can be held for B players to advance to Class A. Mixed or unrated entries nullify events for special purpose altho the normal ratings would be made.

CLUBS OR AREAS MAY SPONSOR TOURNAMENTS TO ADVANCE PLAYERS FROM ANY CLASS TO THE NEXT. THIS LIST SHOWS CHANGES ONLY. THOSE NOT HERE LISTED RETAIN RATINGS PREVIOUSLY PUBLISHED IN JANUARY, APRIL OR JUNE.

Robert A. Karch now has a record of over 700 Northwest players in Washington, Oregon, Idaho, Montana, Utah, and Nevada, compiled from results published in the Washington Chess Letter and the Idaho Chess Quarterly. This list contains changes in the ratings of 285 players.



NORTHWEST MASTERS (2150 UP)

Dake, Arthur W. 2381
McCormick, James H. 2188
Ulvestad, Olaf I. 2210
Zemgalis, Elmars 2276

NORTHWEST EXPERTS (2000 UP)

Greenwald, Ben 2062
Griffiths, Charles 2096
Groenig, Dr. David 2035
Hartwig, Kenneth R. 2018
Lapikan, Dr. Peter 2127
Patterson, G.S.G. 2096
Pupols, Viktors 2130
Seglins, Viesturs 2130
Smith, Adam J. 2052

CLASS A (1800 UP)

Aldape, Dr. Hector 1815
Ayer, Ellis C. 1871
Benge, Donald 1849
Bricher, Vince 1807
Buckendorf, Glen 1972
Byron, Fred 1949
Clark, Farrell L. 1859
Coghlan, Dr. K. 1840
Cosho, John 1809
Diedrich, Ed 1810
Doi, Bob 1805
Dolan, Phil 1856
Duykers, Dirk 1875
Edmondson, Capt. Ed. 1999
Egg, Edna 1815*
Eilmes, Donald P. 1865
Ellis, A.B. 1942
Erb, Rody 1864
Erickson, David 1822
Freeman, Darrell 1846
Gedance, Maurice 1984
Grannis, Dave 1906

Harmon, Clark 1901
Hartwell, Ted 1887
Hindman 1919
Holzinger, Robert 1915
Hughhart, Harold 1929
Hunt, Stanley 1813
Jacobs, Nolton E. 1942
Janushkowsky, Dr. A. 1833
Jarosz, Wasyl 1900
Jones, Kenneth R. 1981
Kimpton, Laverl E. 1961
Kimpton, Lloyd 1848
Lundberg, Helmer 1850
Mage, Max 1850
Maury, H. Loundes 1812
Meador, Duane 1936
Morris, Oliver S. 1855
Morris, Richard 1844
Munro, James 1870
Murray, Dr. Arthur A. 1908
Nightengale, Ed 1830
Owen, Richard 1808
Pathakis, Ted 1944
Pawley, Richard 1877
Razor, George 1829
Reichman, M.A. 1927
Ryan, S. 1812
Schofield, William 1850
Sheirie, James 1969
Stewart, Charles H. 1894
Taber, William F. 1868
Thompson, Jack 1950
Travis, Tod 1993
Tveden, Ed 1805
Unger, Rodney 1924
Vandenburg, Richard 1997
Wade, Daniel E. 1962
Walker, Robert 1976

CLASS B (1600 UP)

Anderson, John 1791

Archbold, John 1635
Baitis, Henry 1600
Bender, Albert 1770
Bender, Ostap 1760
Benoit, Jim 1728
Bixler, Earl 1606
Bjornsen, Dale 1695
Blair, Dean 1785
Bokma, Peter 1715
Bradshaw, H. 1683
Brandal, Willy 1689
Brandt, Howard 1646
Breham, Carl 1787
Bricher, Joseph 1629
Brown, R. (Seattle) 1650
Butler, John 1700
Cairncross, R.W. 1705
Chapman, Wayne 1743
Cnappius, Gaston B. 1773
Conway, Mike T. 1672
Corey, Don 1714
Cowan, Eugene L. 1761
Cravens, Carl 1716
Daniels, Don 1709
Davidsen, Ted 1671
Davies, Robert 1720
Davis, Ted 1736
Docekal, Fred 1750
Eddy, Buz 1620
Eilmes, Mary 1633
Eitel, Richard 1784
Elliott, Don 1648
Enochson, Melvin 1750
Ervin, F.W. 1730
Falk, Charles 1744
Feuerberg, Gary 1751
Flowers, Dorn 1700
Frannett, Mike 1791
Fredrickson, Archie 1787
Fricke, Ray 1733
Gallardo, Julian 1671
Gates, George 1636

* Highest rated woman

Geary, Charles T.	1746	Schubert, Mel	1745	Fredstrom, Bruce	1571
Hallibaugh, Robert	1750	Seekamp, Killian	1728	Freicntel, PFC	1426
Hanson, Bryant	1742	Shanley, Paul	1642	Furman, PFC	1430
Hansen, Ralph	1714	Shanley, Mrs. Paul	1600	Gemar, Joseph A.	1519
Hardin, Robert	1722	Shoemaker, Bob	1650	Gerow, Earl	1591
Harle, Albert L.	1762	Skirmants, Nick	1640	Goodwin, Ed	1488
Harmeson, Chester	1712	Smith, Alex	1753	Goodwin, Ed Jr.	1400
Harris, C.E.	1764	Smith, Raymond A.	1657	Green, Wally	1427
Hart, R.K.	1720	Southern, Bob Jr.	1700	Hand, Bob	1466
Healy, Clarence	1600	Southern, Richard	1675	Hartman, John	1510
Heilbut, Dick	1789	Stanley, G.T.	1662	Hartwig, Lew	1538
Herman, Bill	1630	Stelmach, Theo	1708	Hayworth, P.G.	1500
Hiatt, Dick	1617	Stevens, Claude	1680	Herman, May	1528
Hickey, Pat	1788	Stymans, Phil	1670	Hintz, Otto	1416
Hoffman, Dick	1602	Sweezy, Claud	1769	Holohan, Martin	1467
Howard, Fred M.	1660	Tabor, Ron	1631	Hull, Everett	1590
Hughes, Roy	1799	Taylor, Irwin W.	1792	Keel, Terry	1550
Hunt, Elmer E.	1609	Trout, Ed	1600	King, Joe	1470
Hunt, Thad	1692	Vaughn, Sterling	1730	Krueger, Hartley	1564
Hunter, Neil	1604	Vukonich, Eugene	1740	Lamon, Charles	1595
Ida, Gerald	1767	Walton, Larry	1781	Lutz, Albert H.	1386
Johnson, Alfred	1726	Warner, Dave	1730	Mejia, Juan	1394
Johnson, Mark	1666	Wendel, Gary	1600	Michaelis, B.	1444
Joseph, Dr. R.B.	1799	Wheeler, Ray	1761	Michaelis, Mrs. B.	1400
Kaffenberger, Henry	1609	White, Carl	1748	Mohs, James	1377
King, Neal	1689	Yates, Tom	1664	Murray, Cauck	1500
Kleinhaus, Dean	1600	Young, Richard	1753	Ney, George	1372
Knapp, Earl E.	1620			Pattee, I.B.	1583
Kondra, John	1600	<u>CLASS C (Below 1600)</u>		Poe, I.C.	1518
Kooyman, Ray	1683	Adams, Albert	1298	Powell, S.D.	1500
Krapfel, Bill	1766	Addison, Erving	1222	Raine, Ronald	1475
Krums, A.	1605	Allen, Robert	1445	Riel, Dave	1348
Kuvara, Robert	1705	Alspach, Dan	1519	Saerar, Leslie	1300
Larson, Austin	1715	Amdahl, Karl	1500	Simmons, Lee	1547
Livingston, Alfred III	1667	Anderson, Dick	1450	Snyder, A.B.	1500
Lockhart, Scott	1733	Baitis, Fred	1400	Sohl, Terry	1400
Loobey, Keith	1719	Baitis, Hartmut	1550	Spangenburg, Cecil E.	1555
Lydic, L.E. Bud	1723	Barnstein, Charles	1525	Stratton, Bob	1404
MacKenzie, John	1729	Beck, Artnur	1464	Trotter, Sam	1500
McDaniel, Clinton C.	1682	Blend, Carroll	1550	Waring, George	1439
McNeese, James	1749	Bochenski, Louis	1558	Wells, Dale (Tiny)	1529
Madsen, Alma	1694	Boyden, J.M.	1592	Wendel, H.	1658
Metzelaar, Charles	1650	Brandvold, Carl	1400	Wendt, Joel	1300
Mizen, Frank	1700	Bruhns, M.	1427	Whitlock, Dale	1480
Moorman, Phil	1799	Burnett, Monroe	1494	Whittley, Boyd	1584
Murphy, Don	1765	Calligan, Chris	1512	Williams, Mrs. B.	1400
Murray, Bob	1647	Colenso, Stan	1550	Williams, Buz	1535
Napjus, Chris	1649	Cook, Claus	1416	Williamson, Jonn	1511
Obstarczyk, Jack	1600	Dart, Ken	1474	Wizenthal, R.	1400
Osgood, Sam Sr.	1725	Day, Ralph	1530	Woffinden, Maurice	1448
Osterman, George	1730	Derham, Richard	1457	Zigler, C.E.	1580
Parker, Dick	1627	Dubendorf, Graham	1420		
Parker, Roy S.	1627	Durwald, L.C.	1495		
Pinson, R.	1724	Edwards, Dwight	1544		
Ray, Ronald	1776	Egbert, Miss Ruby	1418		
Rebold, William	1739	Ege, Eddy	1542		
Reddy, John	1700	Egg, Doyle	1551		
Riley, Buck	1639	Elliott, Walter	1500		
Robertson, Dick	1669	Felt, J.	1445		
Schroedel, John	1723	Franklin, Gary	1539		

CHALLENGE MATCHES

Rated players are invited to send in results of 2 to 5 game matches for rating purposes, but no more than one match a month between the same two players. Address postcards to: R.A.Karch, 1636 46th Ave. Oakland 1, Calif.

UNRATED PLAYERS! -Enter a tournament or two!

Chess Around the World

HOMESTEAD, FLORIDA

The U.S. Junior title was won by Raymond Weinstein, 17, from Brooklyn, the favorite because he had twice won the junior title at the Marshall Club in New York. He scored 8-1, drawing two games.

Larry Remlinger, of Long Beach, Calif., also scored 8-1, but had lost to Weinstein in the fourth round.

Stephen Jones of Austin, Texas, finished third with 6-3.

NEW YORK

A committee of USCF and ACF officers have promised United States participation in the 1958 Olympics in Munich this September 29 to October 23. Funds have been raised, and are being solicited to send 4 top players and 2 alternates. Twenty-five of the foremost chess leaders in the country have been designated to each raise \$100 for the USCF share of the fund. The Western representative is Guthrie McClain, 244 Kearny St., San Francisco 8, Calif.

The team will be selected from the following outstanding players: Reshevsky, Fischer, Lombardy, Evans, Bisguier, Byrne, and Sherwin.

The United States is believed to have a more than favorable chance to regain the World's Championship at the Olympics because there are only 4 boards of actual play, and Russia's great advantage in depth will not be such a crushing factor as it has been in previous 10-board encounters.

VARNA, BULGARIA

The United States gained a place in the finals of the World Students Chess Championship Tournament, then lost to Argentina in the first round. Oscar Panno, an international grandmaster defeated World Junior Champion William Lombardy with the white side of a Sicilian Defense. On second board Edmar Mednis, of NYU, drew with Raul Sanguinetti. Anthony Saidy, on third board, lost to A. Redolfi. The only winner for the United States was Arthur Feuerstein, who defeated Jaime Emma on fourth board.

In the preliminaries the United States had defeated Bulgaria, Iceland, and Albania.

MYLWAUKEE, WISCONSIN

The new Western Open chess champion is Paul Benko, 29-year-old former Hungarian champion, who escaped from the communists last year and is now living in Cleveland. He scored 7-1 as did Milton Otteson of Minneapolis, who placed second under the tie-breaking system. Third prize went to Don Byrne, last year's winner, who had a 6½-1½ score. Others with 6½-1½ were Lajos Szedlacek and Dr. Paul Poschel.

ROCHESTER, MINNESOTA

This progressive community, of 35,000 pop., will hold the 59th Annual U.S. Open Chess Championship tournament, from August 4, to 16, 1958.



"Your response to check was 'mate'. The normal reaction is 'money'! I recommend you take up some quiet game to get your mind off of women."

CHESS CLUB IN DISTRESS

by Weaver

The Seattle Chess Club has had a 79-year history of narrow squeaks. Although chess in Seattle dates back 96 years, when C.B. Bagley began playing chess with L.B. Andrews, in the latter's gun shop, the first organizational meeting of the present club was in 1879, when 22 prominent gentlemen met, formed a club, and printed a notice in the Seattle Daily Chronicle, which later became the Post-Intelligencer. C.B. (Pop) Bagley was part owner of the Chronicle. He carried the club with personal management, which often included paying the expenses, until he died in 1932. At about 1913, when Otto Case was secretary of the Commercial Club, he moved the club to the stately clubrooms in the Arcade Building. The club had an exceedingly large membership, but the chess players, being what they are, wanted to be independent, and they moved on. In 1917 a promotional genius solicited the entire membership to join a fraternal club, then conducting a drive. The defection forced the Bagley adherents to even cheaper quarters, but in time most of the members returned, including the promoter who, in 1926, brought Dr. Emanuel Lasker to town for a fee of \$400. The next sites for the club were found in various office buildings, lofts, and hotel basements, and crisis followed crisis, but the rent was always paid, dissident factions tamed, and colorful characters in the world of chess came and went, and were replaced by new.

In 1956 the membership sickened of basements and moved to the top floor of the YMCA, into clean, attractive quarters at a rent saving that allowed the club to save money to refurbish tables and equipment. Maybe things looked too easy, because the effort let down, and splinters began to fly off in all directions; to an uptown commercial venture, a rash of neighborhood party groups, and suddenly the old chess club, one of the few full-time, low-cost chess clubs in the United States, has found itself in a difficult situation.

At a panic meeting, July 18, 7 P.M., it was announced that there was only \$17 in the treasury, and \$40 rent due in two weeks. The membership is down to 39 paid-up members, and the president had moved from Seattle and resigned. A collection of \$11 was donated, another \$12 in dues paid, and it was suggested that notices be sent to 30 or 40 members who had lost track of when their dues were payable. Fred Howard was promoted from vice-president to president, and Walter Conner was elected to fill out the year as vice-president and tournament director. John Gell, having retrieved the books from the former, disinterested secretary, was able to report that although money had been spent for non-essentials, it was all accounted for, and had been spent honestly. He is now in a position to notify delinquent members and request friends of the club throughout the state to rally around with donations. Seattle Chess Club has several well-wishers who, although they now live in other cities or states, have continued to maintain the \$10 a year dues as a tribute to a proud and honorable club that deserves a better fate than to be allowed to fade away.

There is an eager group of juniors pleading for direction and instruction at regular study sessions.

If you are interested in a more elaborate history of Seattle Chess Club, drop in at room 604 and read volumes of Chess Letter, starting with 1950, in which Jack Nourse had a series of vignettes of former members and their adventures at the oldest incorporated club of any kind in the state of Washington. Your visit will help restore life and activity. If you can afford a donation, send a check to John Gell, in care of the Downtown YMCA, Seattle.



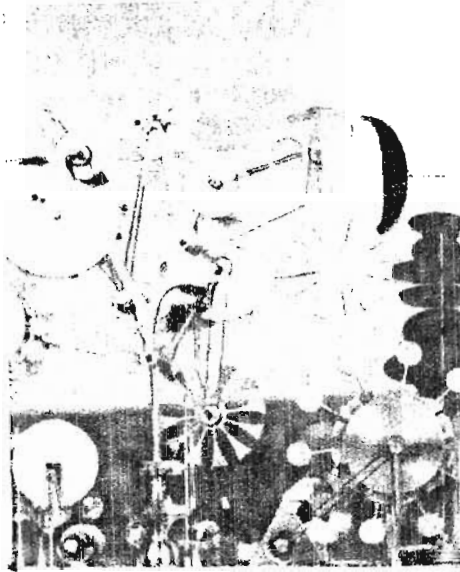
CHESS CHAMP AT THE FAIR

Bobby Fischer, the 15-year-old U.S. chess champion has been guided through the Brussels World's Fair by Larry Finley, who is a teen-age chess player from Oswego, Oregon.

Larry is a high school student who is in Europe for the summer and is writing a series of articles about his adventures for the Oregon Journal, Portland.

At the local chess club in Brussels, Larry heard that Bobby would be spending the weekend at the fair with his 20-year-old sister, Joan, and thinking Bobby might like another teenage boy to talk English with, he got in touch with him and was invited right over. They hit it off very well together, and the three of them went to the fair. Larry had worked as a guide for a month and knew his way around. Later in the day Bobby's sister grew tired of boy-talk (chess, girls, cars, swimming, girls, cars, girls etc.) so she left them on their own the next two days. Their interest was attracted by the huge Russian Pavilion with its Sputniks and heavy machinery. Fine arts seemed to be pushed into a corner in favor of electronics, optics, etc.

They continued to the U.S. pavilion to discover why it is described by some as highly controversial, and decided it was because the "typical" American home with its "take it easy" theme of patio living and the many objects of extremely abstract art throughout the pavilion prompts Europeans to ask, "Is America really like this?" The large computing machine and atomic exhibit are drawing the most interest.



Fischer is in Europe to compete in the Interzonal tournament at Portoroz, Yugoslavia, beginning August 5, which will provide candidates for an elimination tournament. This will determine the next challenger for the world title. After visiting Brussels he continued to Moscow for an exhibition tour. Later dispatches indicate he arrived in Moscow several weeks before he was expected, and was happily enjoying visits to the chess clubs, and much to the embarrassment of the Russian officials he had to be told it was closing time each night. Bobby claims

to be intrigued by the Russian style of play and is absorbing ideas at a great rate while maintaining about a 60% winning percentage in skittle games.

Larry Finley concluded his article for the Oregon Journal "Youth Page" with a resounding compliment for what he described as America's most approved exhibit. It was, he said, produced at a cost of millions of dollars and hundreds of years of effort. This is the group of over 300 college students who are acting as guides in the American pavilion. Each of them was hand-picked and they all realize the responsibility put upon them to represent our country. Every state is represented, even Hawaii. They all have an unending degree of patience, which is well needed when such questions as "Why doesn't the U.S. have a Sputnik?" are asked. All of them are proficient in two or more languages, and are also able to answer in five languages the two most asked questions of the day: "Where are the lavatories?" and "Where is Circarama?"

On the last day of their tour, Larry got up enough courage to ask for a chess game and was soundly trounced four games, after asking Fischer not to try to be easy on him.

SOLVERS' CONTEST

PARIMUTUEL PAYOFF: #1. 3 points; #2. 4 points

The Washington Chess Letter and Mutual Protective Association for the Edification and Cultural Advancement of Problem People is overwhelmed with dimes and hereby declares a bonus dividend of 12 points this month. This makes the July problems worth 62 points to be divided among the astute solvers who got the right answer and sent a dime. Those who got both problems right therefore get 7 points, worth 2¢ a point, a nice profit of 40%, which is better than any other gilt-edged securities will pay.

As each player is playing individually for 50 points to make the honor role or win a prize it does not matter whether he misses a month or starts late. Those who do not want to play for a prize need not send money, but are awarded equal honorary points which do not reduce the prize points.

When a prize player reaches 50 points his Chess Letter subscription is extended six months and then he can start all over again, we hope.

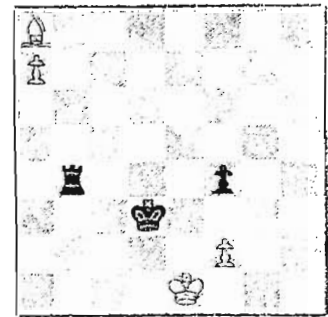
LAST MONTH

The first position, repeated at the right, is by F. Kutschera, Warsaw, and is solved by 1. QxP. The 3-er, by H. Guttmann, Vienna, requires 1.P-Q4 as a first move, to be followed by N-B3 or N-Q3 in most cases. Black has the resource 1. ...R-QN2 if White starts with a Rook move.

THIS MONTH

Our first position, on the left, is an ending we frankly think will knock a lot of solvers for a loop. Now don't be depending on a fine innate sense or intuition to lead you to an answer like in a skittles game, and don't be giving Black any dumb moves, because he would like to set a trap. Send about 3 best moves for each side to establish a win for White. The 3-move problem is merely a refreshing pause in the day's occupation, and is also coded in Forsyth, with White to play.

By H. KINCK
(BLACK)

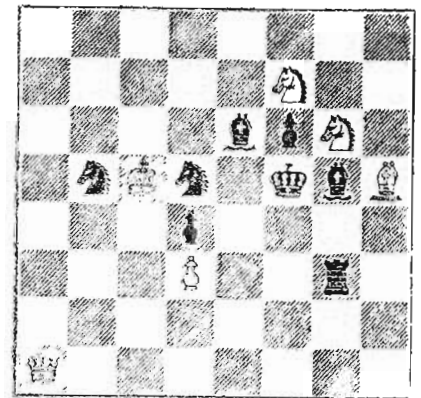


White to play and win

B7	Bader	25.16*
P7	Ballantine	25.16
8	Bloomquist	21.59*
8	Bothun	3.57
8	Dolph	14.74*
1r3p2	Fakkema	7.00
3k4	Gifford	4.17
5P2	Goodwin	14.91*
4K3	Haffner	10.57*
	Husby	3.00
	Joachim	18.91*
	Karch	7.00*
	Kittredge	25.16*
	Kendall	4.17
	Lydic	4.17
	Nourse	14.74
	Ring	3.00
	Spencer	3.00*
	Thompson	25.16*
	Tuggle	11.91

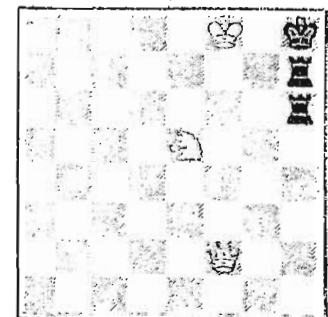
(*) Indicates prize points

Send solutions to F.H.Weaver,
501 Olympic Place, Seattle 99
before August 25th.

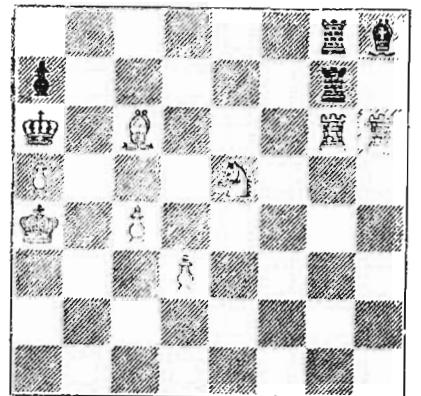


WHITE TO PLAY, MATE IN 2

By F. P. W. VERKOR (Lindbergh)
(BLACK (3 moves))



WHITE (3 moves)
MATE IN 3



WHITE TO PLAY, MATE IN 3

ERICKSON WINS NORTHEAST

3 TIE FOR 2ND

You can't keep a good man down so DAVID ERICKSON came back to win the 6th North East Seattle Invitational with a $3\frac{1}{2}$ - $1\frac{1}{2}$ score. He was $\frac{1}{2}$ point behind both DAN WADE and OLIVER MORRIS going into the final round and appeared to have practically no chance of winning. But ROBERT KARCH knocked off DAN WADE and so ERICKSON took care of MORRIS himself to win the tourney. MORRIS, WADE and KARCH finished in a 3-way tie for second, all with 3-2. The Eilmes family took basement honors with DON breaking even with $2\frac{1}{2}$ - $2\frac{1}{2}$ and MARY being blanked with 0-5.

ERICKSON lost his opener to KARCH so was not considered seriously as a contender until the very end. It was Dave's 3rd tourney win. Wade has won two tournaments and Don Eilmes one. Morris has yet to win one.

The tourney was held in honor of ROBERT KARCH, in Seattle on leave from the army. As he did not have long, the tourney was a one game per player round-robin instead of the usual double round-robin as in past affairs. Colors played an important role in the final outcome, only wins with the black pieces being Erickson and Morris against Mary Eilmes. Wade managed to draw both Don Eilmes & Erickson with the black pieces but all other contests ended with black losing.

		W	L	D	
1. David Erickson	L3 W6 W5 D4 W2	3	-1	-1	$3\frac{1}{2}$
2. Oliver Morris	W5 W3 L4 W6 L1	3	-2	-0	3
3. Robert Karch	W1 L2 W6 L5 W4	3	-2	-0	3
4. Dan Wade	W6 D5 W2 D1 L3	2	-1	-2	3
5. Don Eilmes	L2 D4 L1 W3 W6	2	-2	-1	$2\frac{1}{2}$
6. Mary Eilmes	L4 L1 L3 L2 L5	0	-5	-0	0

FIFTH TOURNEY

ERICKSON 1. EILMES 1. boosting Eilme's score up to 4-4 and Erickson's to 2-4 with 2 games (Erickson vs. Mary Eilmes) unplayed.

TOTALS AFTER 6 TOURNAMENTS

Erickson $5\frac{1}{2}$	Wade $5\frac{1}{2}$	Erickson 7	Eilmes 4
Erickson 6	Morris 5	Wade 7	Morris 6
Wade 6	Eilmes 5	Morris 6	Eilmes 5

(Wade & Morris played 2 extra in a playoff.)

MATCH: MORRIS 3. KARCH 1.

In a best out of 5 match, Morris lost only in the third game while besting Karch 3 to 1.

CHESS IN IDAHO

VANDENBURG

In our report on the IDAHO OPEN last month, we erred regarding the "B" tourney. The Bye does count as the low man in the Median! When a good player arrives late he should not be allowed to enter as only the lowest ranking players should ever be awarded Byes. Washington has junked the Median for 5 rounders and probably will stick to a modified Solkoff where players who forfeit will be given $\frac{1}{2}$ point per forfeit as far as their opponents are concerned. Of course the $\frac{1}{2}$ points won't be shown on the forfeiting player's score!

Send \$1 for four issues of the IDAHO CHESS QUARTERLY to Dick Vandenburg, whose address is 913 N. 22nd St., Boise, Idaho.

VANDENBURG WINS BOISE VALLEY TOURNAMENT

DICK VANDENBURG won the first annual Boise Valley Tournament with $4\frac{1}{2}$ - $\frac{1}{2}$. There were 23 players in this tourney, seven in Class "A", ten in Class "B", and six in Class "C".

NICK SKIRMANTS of Boise won the "B" event with 5-0 while DELBERT HOPKINS, also of Boise, won the Class "C" tourney with a $3\frac{1}{2}$ - $1\frac{1}{2}$ score. There were 14 players in the tourney from Boise, 7 from Nampa, and 1 player each from Caldwell and Marsing.

VANDENBURG defeated A. L. HARLE, J. STANKE, C. H. STEWART, J. COSHO, and drew with ROY PARKER. STEWART was 2nd with a 4-1 score.

SANDPOINT ACTIVITY

BRUCE FREDSTROM has organized a club at Sandpoint which has elected officers & is maintaining a club ladder.

Sandpoint has played some matches, drawing a Spokane 2nd string team 6 - 6 and defeating Wallace twice by scores of 8 - 2 and $6\frac{1}{2}$ - $3\frac{1}{2}$.

Sixteen players turned out for the Sandpoint City Tournament won by a senior player (most Sandpoint players are juniors) THAD HUNT who scored $4\frac{1}{2}$ - $\frac{1}{2}$. CARL QUASS finished with 4-1 while JIM BENOIT, BRUCE FREDSTROM, P. G. HAYWORTH & SUZAN CANTRELL all finished with 3-2 scores.

GAMES Wade

This being a rush issue, we run to the IDAHO CHESS QUARTERLY for some fine efforts played in the recent Idaho Open in Boise.

DR. PETER LAPIKEN

VIKTORS PUPOLS

(English)		
1. P-QB4	N-KB3	14 N-Q5
2. N-QB3	P-KN3	15 B-K3
3. P-KN3	B-N2	16 N-N3
4. B-N2	O-O	17 N-B3
5. P-K4	P-Q3	18 QN-K4
6. KN-K2	N-B3	19 BxN
7. R-QN1	P-K4	20 Nx B
8. P-QN4	B-K3	21 Q-N4ch.
9. P-Q3	Q-B1	22 PxQ
10 P-KR3	N-Q2	23 Rx B
11 P-N4	P-B4	24 P x P
12 KP x P	P x P	25 R-Q6
13 P x P	B x P	26 P-B4

BEN GREENWALD

JIM MCCORMICK

(Sicilian)		
1. P-K4	P-QB4	21 K-N1
2. N-KB3	P-Q3	22 Q-B3
3. P-Q4	P x P	23 R-Q5
4. N x P	N-KB3	24 P x B
5. N-QB3	P-KN3	25 R-Q1
6. P-B3	B-N2	26 Q-Q3
7. B-K3	O-O	27 P-QB4
8. Q-Q2	N-B3	28 Q-B3
9. O-O-O	P-Q4	29 P-Q6
10 N x N	P x N	30 P-Q7
11 P x P	P x P	31 Q-Q3
12 N x P	N x N	32 Q-Q5
13 Q x N	R-N1	33 P-B5
14 P-QN3	Q-K1	34 B x R P
15 B-QB4	B-K3	35 Q x K P
16 Q-Q3	B-B4	36 B-N4
17 Q-Q2	R-B1	37 R-Q3
18 B-Q4	P-K4	38 R x R
19 B-N2	R x B!	39 Q-R8ch.
20 P x R	Q-R5	

Black resigned before White could move as 40 Q x Bch., K x Q; 41 P-B6 dis. ch. leads to a simple king and pawns win for White.

VIKTORS PUPOLS

BEN GREENWALD

(Giuoco Piano)		
1. P-K4	P-K4	8. Q x Q
2. N-KB3	N-QB3	9. B-Q5
3. B-B4	B-B4	10 N-R3
4. P-B3	Q-K2	11 P x N
5. P-Q4	B-N3	12 P-QN3
6. P-Q5	N-N1	13 N-B4
7. P-Q6	Q x P	14 N-K3

(Continued in next column.)

15 P-QR4	P x P	21 P-B4	P-QR3
16 R x P	N-R3	22 P-B5	P x P
17 P-QN4	B-N2	23 P-Q6ch.	K x P
18 O-O	B-N3	24 N-B4ch.	K-B3
19 B-N2	KR-QB1	25 KN x Pch.	K-N4
20 KR-R1	N-B2	26 N-Q6 mate.	

Brilliantly done!

INLAND EMPIRE OPEN

DICK VANDENBURG

F. H. WEAVER

(Dutch)			
1. P-Q4	P-KB4	10 B-N2	QN-Q2
2. N-KB3	N-KB3	11 P x P	BP x P
3. P-K3	P-Q3	12 Q-B6!	K-K2
4. P-QN3	P-QN3	13 N-K5	B x N
5. P-KN3	B-R3	14 P x B	N-K1
6. B-KN2	P-QB3	15 B-R3ch.	N-B4 (a)
7. P-B4	P-Q4	16 B x Nch.	P x B
8. Q-B2	P-K3	17 Q x B	Resigns.
9. QN-Q2	B-Q3		

(a) Black had no choice. If 15 ---, K-B2; 16 B x P! threatening mate and the rook. Only answer is 16 ---, P x B; 17 Q x Pch., K-N3; 18 Q-K6ch., K-R4 (if K-N4; 19 B-K7ch. wins Q) 19 B-K7, Q-B2; 20 Q x Pch. and mate in one. (Vandenburg)

SEATTLE CHESS CLUB TOURNEY

DAN WADE

TOM MAKENS

(Alekhine)			
1. P-K4	N-KB3	12 N x R	B-B4
2. N-QB3	P-Q3	13 B x N	N x B
3. P-Q4	P-KN3	14 P-KB4	N-B3
4. B-N5	B-N2	15 B-B4ch.	B-K3
5. P-K5	P x P	16 B x Bch.	K x B
6. P x P	Q x Qch.	17 N-B7ch.	K-B4
7. R x Q	N-N5	18 N-K2	R-QB1
8. P-KR3!	N x P	19 P-N4ch.	K-K5
9. N-Q5	P-KB3	20 N-B3ch.	K x P
10 N x Pch.	K-B2	21 N-K6ch.	Resigns.
11 B-KB4	QN-B3		

MAX BADER

DAVID HARRISON

(Sicilian)			
1. P-K4	P-QB4	14 N-B7ch.	K-Q1
2. N-KB3	N-QB3	15 N x R	N-B7
3. P-Q4	P x P	16 B-B4	N x Q R
4. N x P	N-B3	17 R x N	P-K3
5. N-QB3	P-Q3	18 B-KN5ch.	K-B1
6. P-KB4	P-KN3	19 B-R6ch.	K-N1
7. N x N	P x N	20 R x B	K x N
8. P-K5	P x P	21 B-B6	B x B
9. Q x Qch.	K x Q	22 P x B	R-KB1
10 P x P	N-N5	23 B-N7ch.	K-N1
11 B-KB4	B-KN2	24 B x P	R-QB1
12 O-O-Och.	K-K1	25 B-N5	Resigns.
13 N-N5	B-Q2		

P O S T A L C H E S S

Olaf Ulvestad is making a tour of the East for several weeks and therefore we do not have any postal games annotated by him this month. The last word we had of him is that he is in Valpariso, Indiana giving an exhibition match under the auspices of the Y.M.C.A. Chess Center will remain open until his return.

A new "A" Division section of postal chess is just starting with Coubrough, Wade, Weaver, Bishop and Karch fighting it out to see who is the best player. This should be quite a battle with these five top players battling it out. George Bishop and Bob Karch are new to our postal chess tournaments but by no means new players to Chess and are well known to most of our members. They start with a rating of 1600, but before this section is finished we look to see the other three top rating players not so far in the lead. Usually "A" players are started with 1400 points as their ability is usually not known, but in the case of Bishop and Karch who are of proven and well known ability, it would hardly be fair to the other three to start them with 1400. So in this case it has been decided to start them with 1600. (Any objections?)

Here is an explanation of how we compute the ratings.

Col. 1	Col. 2	Col. 3	Col. 4	
0	50	50	0	3 shows the gain if the lower rated opponent won. By column 4, we know what gain or loss to score if they drew (the lower rated player gains and the higher rated player loses). On all games the opponent loses as much as the winner gains.
20	48	52	2	
40	46	54	4	
60	44	56	6	
80	42	58	8	
100	40	60	10	
120	38	62	12	
140	36	64	14	
160	34	66	16	
180	32	68	18	
200	30	70	20	
220	28	72	22	
240	26	74	24	
260	24	76	26	
280	22	78	28	
300	20	80	30	
320	18	82	32	
340	16	84	34	
360	14	86	36	
380	12	88	38	
400	10	90	40	
420	8	92	42	
440	6	94	44	
460	4	96	46	
480	2	98	48	
500	0	100	50	

When a player is more than 500 above his opponent, he gains no credit. If he loses, he does so heavily; but we limit his loss to the 100 points in Column 3 as he must have blundered and there is no point in pressing the penalty to extremes.

Note that, in each of these instances, the new rating immediately governs; i.e. on the next report to reach us, each player's rating - not his original rating, not his last published rating, but the very last rating just before this new result is to be rated.

We award points and penalize the forfeiting player on all forfeitures. This may seem somewhat unfair as it may give the winning player an inflated rating according to his ability, but it stops a losing player from forfeiting games in order not to lose points. While the winning player may have his rating inflated, it only takes a few rounds to correct such a condition. This seems more fair than to not award points at all for forfeited games.

Ratings on each game in our Postal Chess tournaments are computed according to the above chart after the game has been reported, scored and published.

According to the chart, if a player has 100 points more than his opponent, we locate the figure for the difference in Column 1. If he won, he gains 40 points, as in column 2. Col.

POSTAL CHESS

R. R. Merk
 Postal Chess Director
 1026 E 71
 Seattle 15, Wash.

Due to getting this issue out a few days earlier than usual, reports are not for a full month.

		Games completed since last issue.				Points
6/29/58	57A-5A	Cairncross	1	Laine	0	30
	57A-5B	Cairncross	1	Laine	0	30
7/5/58	57A-6B	Coubrough	1	Woodward	0	28
7/8/58	57B-8A	Raleigh	1	Guevara	0	56
	57B-8B	Raleigh	1	Guevara	0	56
	57B-8B	Abrahamson	1	Guevara	0	26
	57B-8A	Abrahamson	1	Guevara	0	26
7/9/58	58A-3A	Eilmes	1	Husby	0	44
7/10/58	58A-2B	Mills	1	Laine	0	18
	57A-5A	Cairncross	1	Merk	0	32
7/12/58	57A-6A	Coubrough	1	Mills	0	16
7/13/58	58B-2A	Sala	1	Warren	0	58
	58B-2B	Sala	1	Warren	0	58
7/14/58	57B-10A	Benoit	1	Bennett	0	58
	57B-10A	Miller	1	Bennett	0	54
	57B-10A	Gifford	1	Bennett	0	40
	57B-10A	Lyberger	1	Bennett	0	18
	57B-10B	Miller	1	Bennett	0	54
	57B-10B	Gifford	1	Bennett	0	40
	57B-10B	Lyberger	1	Bennett	0	18
7/15/58	58A-2A	Phillips	1	Luters	0	32
7/18/58	57A-6A	Coubrough	1/2	Woodward	1/2	30
	58A-1A	Vellias	1	Weaver	0	76
	58B-2A	Tuggle	1	King	0	49
	56B-10B	Van Natta	1	Merk	0	48
7/22/58	57B-4B	Cooper	1	Eilmes	0	92
7/23/58	58A-3A	Eilmes	1	Howard	0	74
	56B-10A	56B-10B				
Laine	x 0 1 1 1	x 1 1 0 1	6	Laine wins top honors in this section and is entitled to two postal chess sections, a set of Postal Chess recorder albums for 4 games, or unless otherwise advised, his subscription will be extended 6 mo.		
Van Natta	1 x 0 1 1	0 x 1 0 1	5			
Lyberger	0 1 x 1 1	1 0 x 0 1	5			
Merk	0 0 0 x 1	0 1 1 x 1	4			
Sween	0 0 0 0 x	0 0 0 0 x	0			

Bennett finds it necessary to forfeit his unfinished games in 57B-10A and 10B.

Eilmes really took a licking when Cooper took him for 92 points, but recovered most of his loss by taking Howard for 74 points. What does this prove? is somebody over rated or under rated, or does it just prove that one game doesn't make a Master, Expert or even an "A" player.

Cairncross upped his rating 92 points by taking Laine for two games and Merk for one. This demoted Laine to the "B" Division but we believe he will recover his position before long in the "A" Division.

Hurrah! Our wandering Treasurer has returned from his travels and resumed his duties.

PLAY CHESS BY MAIL

A GOOD WAY TO IMPROVE YOUR CHESS SKILL, IS TO PLAY BY MAIL. YOU HAVE AMPLE TIME TO REFER TO BOOKS ON THE OPENINGS, TO REFER TO SIMILAR SITUATIONS IN PUBLISHED GAMES, AND TO TRY VARIOUS MOVES ON THE BOARD. THE RESULT IS ADDED FINESSE THAT IS IMPRESSED ON YOUR MEMORY.

THE ENTRY FEE IS 50¢. RULES ARE SENT AND PRIZES ARE AWARDED

SEND ENTRY TO R. R. Merk
1026 E 71 Street
Seattle 15, Wash.

WASHINGTON CHESS LETTER
1026 E. 71, SEATTLE 15.
Return postage guaranteed
Form 3547 requested

H. B. Strachan
5103 N.E. 15 Ave
Portland 11, Ore

4/59



POSTAL CHESS RATINGS

"A" Division		"B" Division	
1	Coubrough 1873	1	Spencer 1389
2	Weischer 1802	2	Abrahamson 1358
3	Wade 1771	3	Benson 1356
4	Spetz 1697	4	Kuvara 1312
5	Phillips 1687	5	Gifford 1272
6	Woodward 1642	6	Merk 1268
7	Mage 1639	7	Fredstrom 1254
8	Skarston 1635	8	McDonald 1252
9	Weaver 1619	9	Koenkow 1208
10	Kaffenberger 1608	10	Skoglund 1201
11	Karch 1600	11	Laine 1198
12	Bishop 1600	12	Bowerman 1177
13	Gairncross 1566	13	Miller 1158
14	Mills 1553	14	Chapman 1150
15	Howard 1550	15	Quass 1150
16	Vollias 1518	16	Nichols 1149
17	Gemar 1408	17	Lee 1140
18	Scripps 1401	18	Watson 1136
19	Knapp 1472	19	Hall 1134
20	Eilmes 1464	20	Ralceigh 1127
21	Roberts, H.H. 1450	21	Youngman 1126
22	Bever 1449	22	Cooper 1104
23	Carter 1447	23	Addisson 1100
24	Luters 1440	24	Litke 1096
25	Lyberger 1428	25	Sala 1094
26	Smith 1419	26	Benoit 1078
27	Roberts, D. 1406	27	Allen 1050
28	Collins 1400	28	Bothun 1050
29	Parsons 1400	29	Dart, Ken 1050
30	Van Natta 1377	30	Dart, E. 1050
31	Husby 1325	31	Kunkle 1050
		32	Lydic 1050
		33	McCord, D.R. 1050
		34	McCord, R.S. 1050
		35	Munselle 1050
		36	Pifley 1050
		37	Robertson 1050
		38	Sawyer 1050
		39	Tuggle 1049
		40	Rogers 1006
		41	King 961
		42	Warren 934
		43	Guevara 910
		44	Bennett 811
		45	Devenere 876