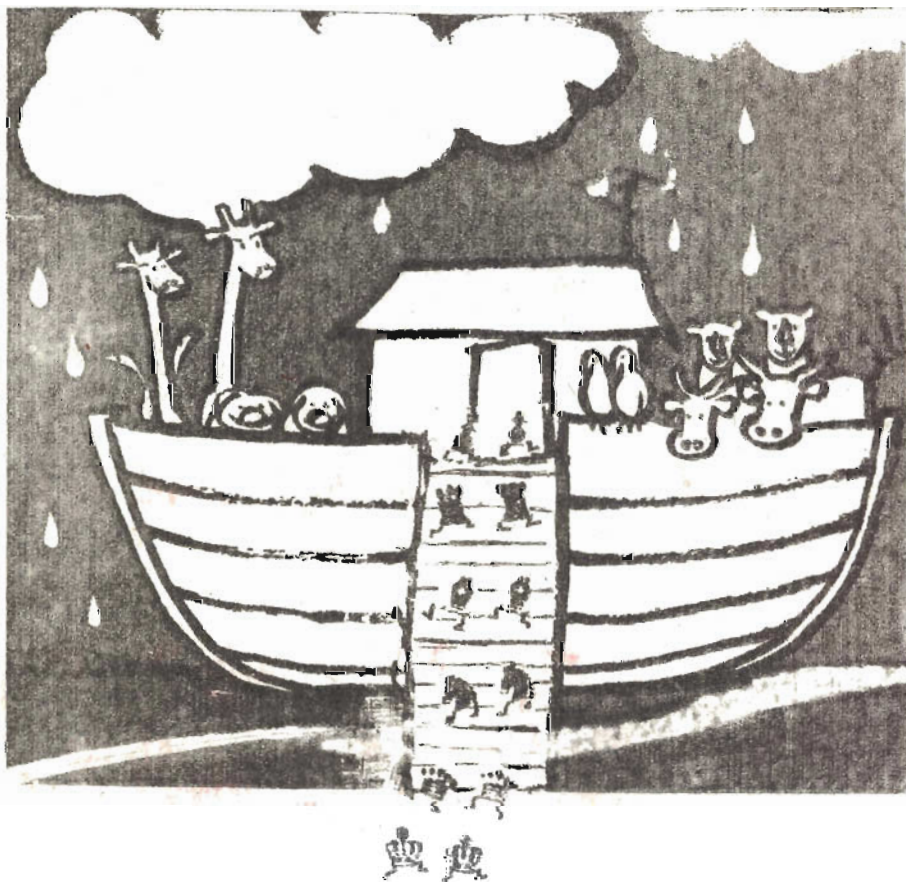


WASHINGTON

# CHESS

LETTER

MARCH 1958



# WASHINGTON CHESS LETTER

OFFICIAL PUBLICATION OF  
**Washington Chess Federation**

**EDITOR**

D. E. WADE 11023 25th N. E. SEATTLE 55

**PUBLISHER**

F. H. WEAVER 501 OLYMPIC PL. SEATTLE 99

**CIRCULATION**

R. R. MERK 1026 E. 71st SEATTLE 15

MEMBERSHIP DUES, \$2.00 A YEAR, INCLUDES SUBSCRIPTION (12 ISSUES). SEND MONEY TO W.H. RALEIGH, TREASURER, 4312 WOODLAND PARK AVENUE, SEATTLE 3, WASH.

**AFFILIATED W. C. F. CHESS CLUBS**

Seattle Spokane Tacoma Olympia West Seattle  
Kitsap Tri-Cities Boeings McNeil

# PUGET SOUND OPEN

## MARCH 22-23 AT SEATTLE "Y"

STARTS AT 9 AM. 5 ROUND  
SWISS-SOLKOFF. ADJUSTED  
SCORES ON FORFEITS

# 25 DOLLAR 1ST PRIZE

OTHER PRIZES. JUNIOR PRIZES.

ADULT ENTRY FEE \$3. JR. ENTRY FEE FOR PLAYERS 18 AND UNDER, \$2. JUNIORS WHO PAY \$3 ADULT FEE ARE ELIGIBLE FOR BOTH JUNIOR AND ADULT PRIZES. THOSE WHO PAY ONLY THE \$2 JUNIOR FEE ARE ONLY ELIGIBLE FOR JUNIOR PRIZES.

Time limit 50 moves in 2 hours, after that games are adjourned.

Only obvious endings will be adjudicated, protecting players from any stalling by a saboteur.

Sat., March 22. 1st round 9-1 p.m. 2nd rd. 1:30-5:30 p.m. 3rd rd. 6:30 p.m.

Sun., March 23. 4th round 8:30-12:30. Last round 1 p.m. to 5.

A NORTHWEST RELATED TOURNAMENT. DEFENDING PUGET SOUND OPEN CHAMPION IS IVARS DALBERGS OF PORTLAND. PLAYERS OF ALL CLASSES OF ABILITY ARE INVITED TO PLAY.

L.J.

WALLA WALLA VALLEY NEWS

KRAPFEL tops the club ladder with the perennial leader, KEN HARTWIG, now (Feb. 25th) in third place.

Krapfel.....	1506	Nightengale....	1188
Pearson.....	1294	Tillotson.....	1102
Hartwig.....	1254	Hunter.....	1048
Peter King....	1228	Anderson.....	846
Nash.....	1228	Neal King.....	834
Bixler.....	1202	Bowerman.....	794
Kronquist.....	1192	Bentley.....	624
		Orr.....	620

Walla Walla Valley C. C. says the last Valley Championship Tmt. (Sept. CL) was not rated. Must have been missed.

OLYMPIA C. C. NEWS

Olympia Tourney now started. Non-tourney games during Feb. - Harmeson 2-1 over Pawley, Mackenzio 2-1 over Ayer, Stymans 2-1 over Mohs, Larson 3-0 over Livingston, Alex Smith and Livingston 3-0 each over Burnett, Pawley 3-0 Wells, and we run out of room here! The Ed.

# SEGLINS WINS STATE TITLE

VIESTURS SEGLINS of Seattle is the 1958 Washington State Chess Champion! This very strong Latvian player had barely missed in the last two tournaments, losing to PUPOLS in a last round encounter at Portland to end second in a 44 player field and then lost a final round encounter to ULVESTAD to finish third in the 38 player Washington Open.

Such luck could not last forever and so when SEGLINS defeated PUPOLS  $1\frac{1}{2}$ - $\frac{1}{2}$  in the big games played Feb. 8th and 9th, he won Washington State's biggest title.

When the Open ended with PUPOLS and ULVESTAD on top each with  $4\frac{1}{2}$ - $\frac{1}{2}$  and they didn't meet each other, chess lovers anticipated a showdown in the Closed with the winner of the Ulvestad-Pupols game becoming State Champion.

However, Ulvestad and five other qualifiers stayed away leaving chess players to decide for themselves why.

Four did enter and played a double round robin. The four were SEGLINS, VIKTORS PUPOLS who had won seven straight tournaments during 1957-58, WALT CONNER, Olympia flash who had a match victory over CHARLES JOACHIM as his big claim to being considered a top-ranked player and EARL KNAPP of Gig Harbor who was the big surprise of the Washington Open.

CONNER took the lead in the opening game winning with the white pieces against KNAPP. Meanwhile PUPOLS with the white pieces drew his game with SEGLINS. Seglin's flag fell & Pupols could not claim the game because both players were in extreme time trouble and no record had been kept of all of the moves and check marks aren't enough to claim a forfeit.

SEGLINS with the white pieces downed Mr. CONNER and PUPOLS with the blacks won from KNAPP in second round play. Saturday evening, PUPOLS won with the black pieces over CONNER and SEGLINS with the white pieces won over KNAPP.

Sunday, with colors reversed, the four contestants tried again. SEGLINS was down a pawn in the opening against PUPOLS but came

VIESTURS SEGLINS	D2	W3	W4	W2	W3	W4	$5\frac{1}{2}$ - $\frac{1}{2}$
VIKTORS PUPOLS	D1	W4	W3	L1	W4	W3	$4\frac{1}{2}$ - $1\frac{1}{2}$
WALT CONNER	W4	L1	L2	W4	L1	L2	2 -4
EARL KNAPP	L3	L2	L1	L3	L2	L1	0 -6

back to win the exchange. SEGLINS finally won a difficult rook and pawns versus bishop and pawns ending to virtually sew up the championship. We laboriously translated this game for our readers. (See Games)

Conners won his second game from Knapp to even his score at 2-2.

Fifth round play found Seglins defeating Conner and Pupols downing Knapp and in the last round Pupols beat Conner and Seglins clinched the tourney by beating Knapp.

PUPOLS has tried to win the state crown for five consecutive years and failed each time. Four times he finished second and in 1955 he was third.

In 1954 Pupols was second to J. SHEETS and in '55 third behind W. BILLS who won & ULVESTAD who placed second. In '56 ULVESTAD won the crown while Pupols and BOB EDBERG tied for second. Last year, Edberg won the championship while Pupols and DAN WADE tied for second. Verily, the State Championship tournament is a jinx for Pupols.

Another record of interest. No Washington Open Champion has ever won the Closed: In 1951 CHARLES JOACHIM won the first Open, but did only fair in the Closed won by CHAS. BALLANTINE. In '52 O.W. MANNEY won the Open and ULVESTAD, who didn't play in the Open, won the Closed. In '53, DON TURNER of Portland won the Open but was ineligible to play in the Closed won by EIMARS ZENGALIS who did not play in the Open.

In '54, JIM SCHMITT of Portland won the Open, could not play in the Closed won by J. SHEETS. In '55, TED WARNER won the Open but was last in the Closed won by W. BILLS who did not play in the Open. In '56, VELLIAS won the Open but finished last in the Closed won by ULVESTAD who was second in the Open! BISHOP won the '57 Open, then left state.

# P. S. L. LEADERS ARE BEATEN

by Wade

Kitsap had a perfect 5-0 PSL record, were at home, had ELMARS ZEMGALIS playing for them on first board and were all set to win the 1957-58 Puget Sound League by whipping a visiting Olympia team that had lost to West Seattle in its last match.

DR. ALMOND and MAGERKURTH had nearly perfect records on the last two boards so were counted on to give ZEMGALIS plenty of help in the scoring department.

What happened? VIKTORS PUPOLS opened festivities by defeating ZEMGALIS and all of the other Olympia players won first games too to take a 5-0 lead! JACK NOURSE and GEORGE REHBERG managed second contest draws and finally, with the score 8-1 in Olympia's favor, ZEMGALIS defeated PUPOLS for the Kitsap team's only win of the day!

In the rout, DR. ALMOND was defeated in 7 moves by RICHARD PAWLEY. Before sending in the result, NOURSE waited two days to see if it were really true! The Kitsap feeling seemed to be - "Well, now that Elmars is playing for us, we can fozzle a game once in awhile." So they all fozzled! Incidentally, Kitsap fired "Con-placency" as their reserve player and are going to rely on "Fear" and "Trepidation".

<u>OLYMPIA CLUB</u>	8.	<u>KITSAP COUNTY</u>	2.
Viktors Pupols	1	Elmars Zengalis	1
Walt Conner	1½	John Nourse	1½
Charles Joachim	1½	George Rehberg	1½
Richard Pawley	2	Dr. Almond	0
Ellis Ayrer	2	Chas. Magerkurth	0

## SEATTLE CHESS CLUB UPSETS CHESS CENTER :

Seattle Chess Center lost a golden opportunity to take over first place in the PSL when they were defeated by the Seattle Chess Club 5½-4½. Center lacked one or two of their best men but almost won anyway. Center led 3-2 after first games, winning on the top 3 boards. Second games on the bottom 3 boards were all draws but SEGLINS got even with ULVESTAD and then with the score tied, WADE avenged his earlier loss to VELLIAS to clinch the decision.

Chess Center started the season as though they had serious designs on the title but since then have sagged badly.

(Continued on right)

<u>SEATTLE CHESS CLUB</u>	5½	<u>SEATTLE CENTER</u>	4½
Vicsturs Seglins	1	Olaf Ulvestad	1
Dan Wade	1	Russell Vellias	1
Oliver Morris	1½	Don Eilmos	1½
Tom Makens	1½	Mary Eilmos	1½
Dave Grannis	1½	Pat Hickey	1½

## TACOMA WINS FIRST MATCH OF SEASON. BEATS MCNEIL 6-4

Tacoma left McNeil leading 5-4 with DICK SOMSEN having a 2 pawn lead over ROD UNGER. After quite a session, it was decided Somsen could win the game but if he did, it would have been very difficult. We have our analysis in this issue (See TACOMA NEWS) Prior to this match, Tacoma had established a record of losing 5 consecutive matches all by 2½-7½ scores.

<u>TACOMA CHESS CLUB</u>	6.	<u>MCNEIL ISLAND</u>	4.
Dick Somsen	2	Rod Unger	0
Scott Lockhart	1	Roy Hughes	1
Al Cook	1	Tod Travis	1
Ludwig Frank	1	Duane Whitlock	1
Gary Wolover	1	Eddy Ego	1

## BEST SEATTLE TIES BOEINGS

West Seattle and Boeings tied 5 to 5 in their match on Feb. 2nd at the Seattle Chess Club. ( \* all drawn games! )

<u>WEST SEATTLE CLUB</u>	5.	<u>BOEINGS CLUB</u>	5.
David Harrison	1*	Max Bader	1*
Gerrit Zwiers	1*	Jim Munro	1*
Fred M. Howard	1	Dale Bjornson	1
Max Mage	1	William Gillotte	1
Willy Brandal	1	Charles Worth	1

## FEB 2nd SIXTH ROUND PUGET SOUND STANDINGS

	W	L	D		W	L	D
Kitsap County	5	1	0	Boeings Club	2	2	2
Olympia Club	4	1	1	Seattle Club	2	4	0
Seattle Center	4	2	0	Tacoma Club	1	5	0
West Seattle	3	2	1	McNeil Club	1	5	0

<u>WALLA WALLA PENN.</u>	15.	<u>WALLA WALLA CLUB</u>	5.
Young	1	Kon Hartwig	1
Erb	1½	Peter King	1½
Jacobs	1	Nightengale	1
Ray	1	Nash	1
Brohan	1	Tillotson	1
Johnston	1½	Turner	1½
Raine	2	Bixler	0
Buiens	2	Bowerman	0
Holahan	2	Bontley	0
Dalen	2	Anderson	0

# KITSAP WINS P.S.L. TITLE !!

by Wade

On Sunday, Feb. 23rd, Kitsap defeated Seattle Chess Center at Chess Center by a 6-4 score to win the Puget Sound Championship. This was the first title for Kitsap in the 12 year history of the League although Kitsap gained one third of the top spot back in the 1953-54 campaign.

On first board, ELMARS ZEIGALIS continued to dominate against OLAF ULVESTAD, winning the first game and drawing the second. Knowledge of the openings gave Zengalis the advantage.

On second board, G. S. G. PATTERSON'S two wins over JACK NOURSE gave Chess Center half of its points.

RUSSELL VELLIAS blundered away a win over GEORGE REHBERG in their first game, having to settle for a draw. In their second meeting, VELLIAS lost quickly, giving Kitsap  $1\frac{1}{2}$  points on third board. This result must be considered a definite upset.

Fourth board could be termed a toss-up but DR. ALMOND proved steadier and won both games from DON EILMES. DR. ALMOND'S play obviously must have been better than it was against Olympia.

MARY EILMES did better than most of the Chess Center regulars, taking the second game from CHARLES MAGERKURTH by winning his queen.

The Puget Sound League trophy and the Puget Sound League plaque, won the past 2 seasons by the Seattle Chess Club, should have their engraving brought up to date & presented to the new League Champions.

<u>KITSAP COUNTY</u>	6.	<u>SEATTLE CENTER</u>	4.
Elmars Zengalis	$1\frac{1}{2}$	Olaf Ulvestad	$\frac{1}{2}$
John Nourse	0	G.S.G. Patterson	2
George Rehberg	$1\frac{1}{2}$	Russell Vellias	$\frac{1}{2}$
Dr. Almond	2	Don Eilmes	0
Chas. Magerkurth	1	Mary Eilmes	1

SEATTLE CHESS CLUB WINS THIRD IN A ROW. UPSETS OLYMPIA  $5\frac{1}{2}$ - $4\frac{1}{2}$

The defending PSL Seattle Chess Club Champions, after dropping their first four matches, won their third in a row ruining Olympia's title hopes  $5\frac{1}{2}$ - $4\frac{1}{2}$ . If Olympia had won from Seattle, they would have re-

played the protested 5-5 tie match with a non-too-strong Bocings team and if they had won that, Olympia would have been in a first place tie and a Kitsap-Olympia rematch with the title at stake would have been necessary.

State Champion VIESTURS SEGLINS had an advantage over VIKTORS PUPOLS BUT PUPOLS fought back with the aid of a defective time clock (no flags!) to gain a draw. With argument taking up so much time and a large part of the first game being played without clocks, there was little time to play a second game. Opening moves were made and when it was discovered that Kitsap had defeated Chess Center, the remaining first board game was called a draw as Olympia cinched second place in the PSL, win, lose, or draw.

DAN WADE downed WALT CONNER  $1\frac{1}{2}$ - $\frac{1}{2}$  on second board, winning a drawish first encounter on a blunder. TOM MAKENS did the most to insure Seattle victory winning 2 from RICHARD PAWLEY on fourth board. JOHN SCHROEDEL won his first game on 5th board and then lost his second to TED DAVIS.

CHARLES JOACHIM did the most to try and bring the title to Olympia for first time, beating OLIVER MORRIS twice.

<u>SEATTLE CHESS CLUB</u>	$5\frac{1}{2}$	<u>OLYMPIA CLUB</u>	$4\frac{1}{2}$
Viesturs Seglins	1*	Viktors Pupols	1*
Dan Wade	$1\frac{1}{2}$	Walt Conner	$\frac{1}{2}$
Oliver Norris	0	Charles Joachim	2
Tom Makens	2	Richard Pawley	0
John Schroedel	1	Ted Davis	1

\* Two drawn games.

TACOMA WALLOPS WEST SEATTLE CLUB TEAM 8-2

Reinforced by CHARLES HEWITT and LES COUBROUGH, Tacoma escaped the PSL cellar winning over West Seattle 8 to 2.

<u>TACOMA CHESS CLUB</u>	8.	<u>WEST SEATTLE CLUB</u>	2
Charles Hewitt	1*	Eugene Vukonich	1*
Dick Sonson	2	Fred H. Howard	0
Les Coubrough	2	Max Lage	0
C. Carlson	1	Ben Weisscher	1
Scott Lockhart	1	F. C. Howard	0
Al Cook	1	F. C. Howard	0

\* Two drawn games.

Final standings and statistics in the April Chess Letter. Bocings-McNeil Mar. 9.

# CORNELIUS, SPOKANE CHAMP

by Dr. Parker

GORDON CORNELIUS regained the Spokane championship in his usual well-played fashion scoring  $5\frac{1}{2}-1\frac{1}{2}$  in the 21 player, 6 round Swiss. DR. DAVID GROENIG scored the half point against Cornelius in a 3rd round encounter that ended in a draw.

ROBERT HIGGINSON, last year's winner, announced beforehand that he was going to retire undefeated and refused to play this year in the tournament.

Second and third places went to DR. HECTOR ALDAPE and ROBERT KITTREDGE who had  $4\frac{1}{2}-1\frac{1}{2}$  apiece. They drew their third round meeting before losing to KROMER and CORNELIUS respectively.

RAY KROMER was all alone in 4th place. After suffering an upset loss to DICK EITEL in the first round, Kromer gathered 4 wins in a row before bowing to CORNELIUS in the last round. If KROMER could have won that final game, he would have won the title.

MIKE CONWAY continued to show improvement and after four rounds had  $3\frac{1}{2}$  points, a first round draw with DR. PARKER being the only blot on his record. The last two sessions found him paired with CORNELIUS and DR. ALDAPE and he was not up to the task of drawing or winning from either of them.

Of the total of 21 players competing, five were newcomers to Spokane chess competition.

There were several forfeits but all were due to illness or absence from town.

DR. GROENIG'S showing with  $3\frac{1}{2}$  points was a surprise because after his drawing with CORNELIUS, it was expected that he would continue with a series of wins. Unfortunately for him, he stumbled over ALDAPE and KITTREDGE. Ironically, he had spent a couple of evenings with Aldape, helping him with openings, just prior to the tournament.

The Spokane club has been invited to return to the penitentiary at Walla Walla for a match in March. The local club won  $11\frac{1}{2}-6\frac{1}{2}$  last September handing the inmate team its only loss. Spokane expects to take twelve men on the trip.

## SPOKANE TITLE HOLDERS

1958 Gordon Cornelius	1955 Leon Svensson
1957 Robert Higginson	1954 Gordon Cornelius
1956 Gordon Cornelius	1953 Gordon Cornelius

Games were played Jan. 16, 23, and 30 at the Desert Hotel.

Place	Number	Name	-1-	-2-	-3-	-4-	-5-	-6-	W L D	Score	Median	Solk.
1st	1.	Gordon Cornelius	W12	W11	D 6	W 3	W 5	W 4	5-0-1	$5\frac{1}{2}-1\frac{1}{2}$	14.0	
2nd	2.	Dr. Hector Aldape	W17	W10	D 3	W 6	L 4	W 5	4-1-1	$4\frac{1}{2}-1\frac{1}{2}$	14.0	
3rd	3.	Robert Kittredge	W18	W16	D 2	L 1	W 8	W 6	4-1-1	$4\frac{1}{2}-1\frac{1}{2}$	13.5	
	4.	Ray Kromer	L 9	W14	W20	W 7	W 2	L 1	4-2-0	4-2	13.5	
	5.	Mike Conway	D 7	W19	W 9	W10	L 1	L 2	3-2-1	$3\frac{1}{2}-2\frac{1}{2}$	14.5	21.0
Second	6.	Dr. David Groenig	W21	W 8	D 1	L 2	W17*	L 3	3-2-1	$3\frac{1}{2}-2\frac{1}{2}$	14.5	20.0
Half	7.	Dr. Griff. Parker	D 5	D 9	D 8	L 4	W13	W10	2-1-3	$3\frac{1}{2}-2\frac{1}{2}$	13.5	
1st	8.	William Voget	W14	L 6	D 7	W 9	L 3	W13	3-2-1	$3\frac{1}{2}-2\frac{1}{2}$	12.5	19.0
2nd	9.	Richard Eitel	W 4	D 7	L 5	L 8	W16	W15	3-2-1	$3\frac{1}{2}-2\frac{1}{2}$	12.5	18.5
3rd	10.	Steve Stonerson	W13	L 2	W17	L 5	W14	L 7	3-3-0	3-3	11.0	
	11.	P. F. Neuman	W15	L 1	L12	L13*	W19	W14	3-3-0	3-3	9.0	
	12.	Ed Hay	L 1	W15	W11	W18	F*	F*	3-3-0	3-3	5.0	
	13.	Pat Tierney	L10	L17	W15	W11*	L 7	L 8	2-4-0	2-4	11.5	
	14.	Lloyd Calkins	L 8	L 4	W19	W20	L10	L11	2-4-0	2-4	10.5	
	15.	Karl Amdahl	L11	L12	L13	W19	W20	L 9	2-4-0	2-4	9.0	
	16.	George Priebe	W19	L 3	L18	L17	L 9	W20	2-4-0	2-4	8.5	
	17.	William Barker	L 2	W13	L10	W16	L 6*	F *	2-4-0	2-4	8.5	
	18.	Herbert Brimble	L 3	W20	W16	L12	F *	F *	2-4-0	2-4	5.0	
	19.	Jack Fredric	L16	L 5	L14	L15	L11	BYE	1-5-0	1-5	7.0	
	20.	Nels Anderson	BYE	L18	L 4	L14	L15	L16	1-5-0	1-5	6.0	
	21.	L. B. Dunson	L 6	BYE	F *	F *	F *	F *	1-5-0	1-5	5.5	

(\* Forfeits.) Aldape, Tierney, Eitel, Calkins, Barker, Brimble, Anderson and Dunson are not on the Jan. 1st Northwest Rating List. (Story by Dr. Parker)

# CHESS IN IDAHO

by Vandenburg

DICK VANDENBURG of Boise won the first Idaho State Closed Championship Tourney held Jan. 11-12th at Rupert. 34 players competed establishing a new record. The tourney was divided into 3 classes. 12 were in the "A" group, 14 in class "B" and 8 others in class "C".

"A"		"B"	
Dick Vandenburg	5-0 (1)	Ted Hartwell	4 $\frac{1}{2}$ -1 $\frac{1}{2}$
Lloyd Kimpton	3 $\frac{1}{2}$ -1 $\frac{1}{2}$ (2)	C. E. Harris	4 -1
Bryant Hanson	3 $\frac{1}{2}$ -1 $\frac{1}{2}$ (3)	Roy Parker	3 $\frac{1}{2}$ -1 $\frac{1}{2}$
C. H. Stewart	3-2 (4)	George Razor	3 -2
Don Murphy *	3-2 (5)	N. Skirmants	3 -2
Eugene Cowan *	3-2 (6)	Norman Lee	3 -2
John Cosho	2-3 (7)	Dora Flowers	2 $\frac{1}{2}$ -2 $\frac{1}{2}$
A. B. Ellis	2-3 (8)	H. Thompson	2 $\frac{1}{2}$ -2 $\frac{1}{2}$
Jerry Stanke	2-3 (9)	D. Freeman	2 -3
Charles Falk	1 $\frac{1}{2}$ -3 $\frac{1}{2}$ (10)	C. Stevens	1 $\frac{1}{2}$ -3 $\frac{1}{2}$
R. K. Hart	1-4 (11)	S. Vaughn	1 $\frac{1}{2}$ -3 $\frac{1}{2}$
Mel Schubert	1 $\frac{1}{2}$ -4 $\frac{1}{2}$ (12)	Mark Johnson	1 $\frac{1}{2}$ -3 $\frac{1}{2}$
		(13) I. B. Pattie	1 $\frac{1}{2}$ -3 $\frac{1}{2}$
		(14) M. W. Wright	1 -4

\* Tied for fifth.

"C"			
1. George Ostorman	5-0	5. Everett Hull	2-3
2. Sam Osgood, Sr.	4-1	6. D. Lee	2-3
3. Jack Allred	3-2	7. Larry Walton	1-4
4. Clarence Rambo	2-3	8. Barney Graff	1-4

Vandenburg won over Stanke, Stewart, Cowan, Hanson and Murphy in the order named to win the championship.

A Victory Banquet was held after last round play and the annual business meeting was held. Officers elected were STERLING VAUGHN, President; DICK VANDENBURG, Treasurer and Editor; ROY PARKER, DARRELL FREEMAN, and R. K. HART, committeemen.

## MATCH PLAY

Twin Falls downed Rupert 9 $\frac{1}{2}$ -4 $\frac{1}{2}$  earning the right to meet Pocatello in the semi-finals. BUCKENDORF, KIMPTON and DEAN BLAIR won two games each for Twin Falls and TED HART - WELL scored 1 $\frac{1}{2}$ . Number 7 board for Rupert, SAM OSGOOD, won twice.

Pocatello edged Twin Falls in a later match 5 $\frac{1}{2}$ -4 $\frac{1}{2}$  and will meet Nampa for the Idaho State Team Championship.

1. Bryant Hanson	0-0	Glon Buckendorf	1-1
2. Mel Schubert	1-1	Lloyd Kimpton	0-0
3. R. K. Hart	1- $\frac{1}{2}$	Don Murphy	0- $\frac{1}{2}$

4. Paul Healy	$\frac{1}{2}$	Ted Hartwell	$\frac{1}{2}$
John Anderson	$\frac{1}{2}$		$\frac{1}{2}$
5. Ray Fricke	0-1	Sterling Vaughn	1-0
	$\frac{5}{2}$		$\frac{4}{2}$

## IDAHO OPEN

The 1958 Idaho Open will be held in the Boise Y.M.C.A. on May 31 and June 1st. Memorial Day falls on Friday, May 30. This will provide an ideal travel day for players. It will be a five round Swiss with a three round Saturday and two on Sunday and will begin promptly at 9 a.m. Sat. May 31. A banquet or picnic will be held Saturday afternoon between the second and third sessions of play so all players can get better acquainted. Entry fee will be \$3 which does not include the price of the planned picnic. The final round should be over by 5:30 Sunday evening.

This tournament will be open to players from ALL of the Western states. Appropriate trophies will be awarded top finishers. It is hoped many of our friends from Utah, Nevada, Washington, and Oregon will plan to attend.

## IDAHO CHESS QUARTERLY

The Idaho Chess Quarterly now has a total of 125 subscribers. Of these, 6 are in Nevada, 8 are in Utah, 3 in Washington, 5 in Oregon and the balance of over 100 in Idaho. \$1 per year. Send money to DICK VANDENBURG, 913 N. 22nd St., Boise, Idaho.

## CHESS LETTER EDITOR'S QUESTION

We observe chess promoters including membership (\$5) in the USCF as a qualification for entering a tournament. We now have a good mirror of Northwest player ability in our N. W. Ratings, thanks to SFC ROBERT KARCH. These ratings follow close on the heels of the numerous chess tournaments and matches. In contrast, the USCF rates only the small fraction of our activities we feel we can afford to have rated. Also, when infrequently published, we find USCF Ratings six months to a year behind. What should we do? We have tried to back the USCF thus far but they continue to give nothing and want more and more.

# Chess Around the World

## MOSCOW, RUSSIA

Vassily Smyslov will defend his title of (Russian) World Champion in a 24-game match with Botvinnik, the former champion, beginning March 4.

## BOGOTA, COLOMBIA

The chess championship of the Americas was won by Oscar Panno of Argentina with a score of 16-3. His chief rivals were Miguel Cuellar of Colombia, William Lombardy of New York, Miguel Najdorf of Argentina, Arthur Bisguier, former U.S. champion, and in sixth place was Antonio Medina of Venezuela.

Panno, who was a grandmaster at the age of 23, first showed prowess in 1955, when he finished third behind Bronstein and Keres in the interzonal tournament at Goteborg.

## PHILADELPHIA, PA.

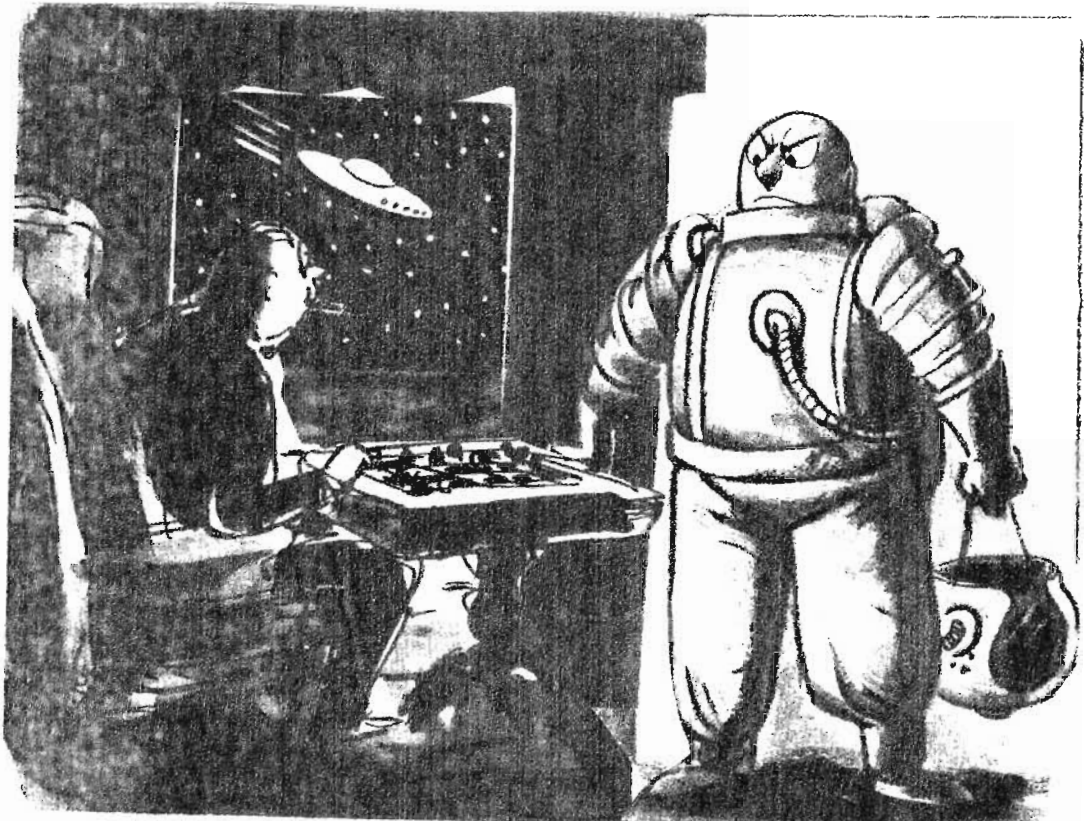
The Philadelphia City Council has passed a City Council Resolution to commend Charles Kalme "in recognition of the honor he has brought to himself, his family, his school, and his city" by his winning of the United States Intercollegiate Chess Championship.

## AUSTRALIA

The New South Wales chess title was won by Bela Berger, 10-2, and C.J.S. Purdy was second with 9½-2½.

## NEW YORK

Bobby Fischer, the 14-year-old U.S. Chess Champion, has been awarded a new title of International Chess Master. The honor was voted by F.I.D.E., a worldwide organization that awards such titles and sponsors international chess competition.

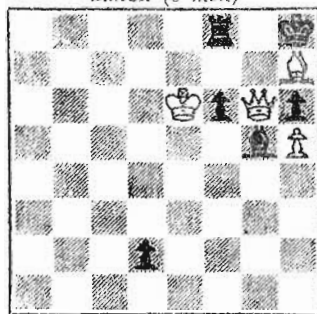


"You're a little ahead of us in space travel, but your Muzio Gambit is old stuff down here."



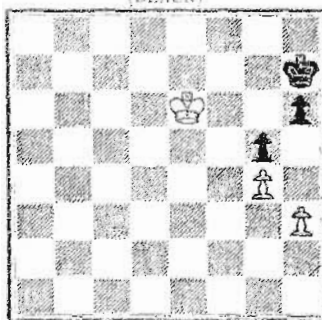
# SOLVERS' CONTEST

EM. LASKER  
BLACK (6 men)



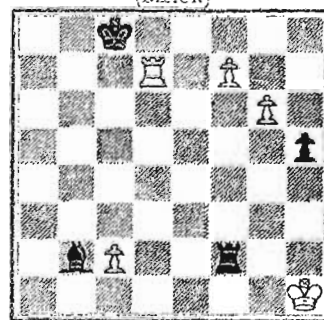
WHITE (4 men)  
White to play and win

Author unknown.  
(BLACK)



(WHITE)  
White to play and win.

By L. PROKES (Prague).  
Second Prize.  
(BLACK)

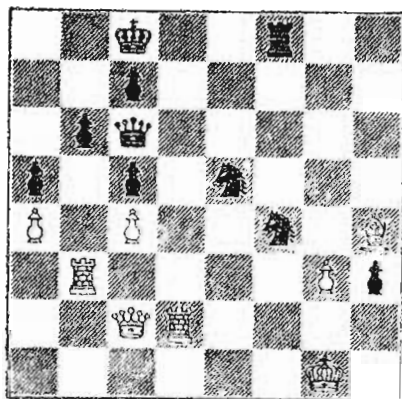


(WHITE)  
White to play and win.

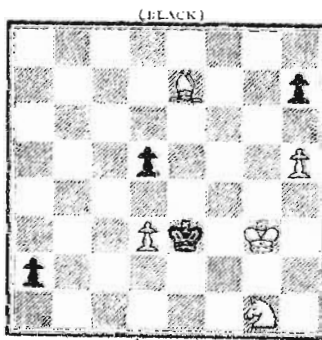
## THIS MONTH

While we are making up our mind about another contest we present some endgame situations that illustrate tricks of the trade that every player should know. Along with your solutions this month, please offer whatever suggestions come to mind as to preferred type and difficulty of problems or endings, and whether to offer small subscription extension prizes, or just print solutions in the same issue that shows the positions.

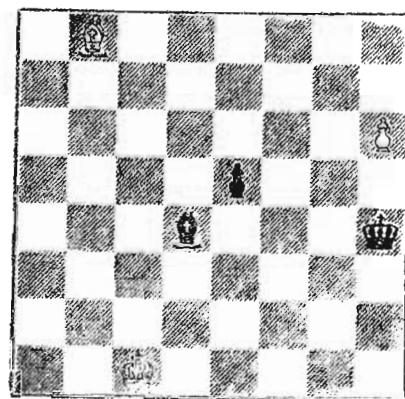
## LAST MONTH



Black to play and win



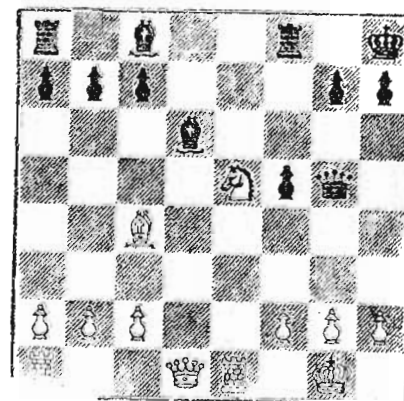
(WHITE)  
2 White to play and win.



White to play and win

We had some idea that if we put up a row of fairly easy endings with an easy-looking one in the middle that we could deceive our solvers. We did knock off half of our pilgrims but others took a second look.

- |          |            |               |
|----------|------------|---------------|
| #1       | #2         | #3            |
| 1 N-K7ch | 1 B-B6     | (P. Heuacker) |
| 2 RxN    | 2 N-K2     | 1 B-R7        |
| 3 KxR    | poison P=Q | 2 K-N1        |
| 4 K-B2   | "          | 3 K-B2        |
|          |            | 4 B-Q4!       |
|          |            | 5 K-Q3        |
|          |            | 6 K-K4!       |



1st day, Black resigns

We wind up with Martin Fass having a perfect score. In a three-way-tie for second are Ballantine (late in Sept.), Bader, and Dolph. Jack Nourse was solid every month but November, when he kicked it around and threw wild.

# ERICKSON IS DOUBLE WINNER

DAVID ERICKSON surprised by winning two Northeastern Seattle Invitational Tournaments held during January and February. Other contestants were OLIVER MORRIS, DAN WADE & DON EILMES.

The first tourney started on Friday, Jan. 10th at Erickson's house. Erickson won two games from Eilmes although Eilmes was a full rook ahead in the second game and then walked into a mating trap. Meanwhile Wade had a "won" game with Morris, tried to be cute and lost a knight and was fortunate to draw the game. In their second game, Wade lost when he put his queen into a trap and lost it.

On Friday, Jan. 24th, one week after 3 of the contestants (Wade, Eilmes & Morris) all had scored 3-2 in the Washington Open, action was resumed at Don Eilme's house. Eilmes won over Morris but then Morris came back winning their second game. Meanwhile, Wade and Erickson had an even game until Wade blundered and lost a rook for a bishop after which Erickson won with ease. In their second encounter, it looked like Wade would get revenge but in his haste to press the attack, Wade neglected to castle and his king was caught in an overwhelming crossfire of enemy pieces and that was that!

On Friday, Jan. 31st, play was at Wade's place and Wade, desperately seeking to escape last place, barely edged Eilmes in their first game but drew their second. Morris won over Erickson in their first and could have won the tourney by taking the second but Erickson was not to be denied and won the final game and the tournament.

	W	L	D	SCORE				
1. Erickson	W4	W4	W3	W3	L2	W2	5-1-0	5 - 1
2. Morris	D3	W3	L4	W4	W1	L1	3-2-1	3½-2½
3. Wado	D2	L2	L1	L1	W4	D4	1-3-2	2 - 4
4. Eilmes	L1	L1	W2	L2	L3	D3	1-4-1	1½-4½

The wives served refreshments helping to make the sessions even more entertaining. At Eilme's place, Mrs. Eilmes played several contests of skittles with Wade after he had lost two quick ones to Erickson.

Most sessions started about 7 and lasted until about 10. One session ended at 11:30.

The February Northeast Seattle Invitational was played on three Saturday evenings so as not to conflict with Friday evening activity at the Seattle Chess Club.

The first night's play was on Feb. 8 at Morris's home. Wade avenged his previous loss to Morris drawing the first and winning the second. Erickson won his opener against Eilmes but Eilmes came back to win the second.

Second round games were at Erickson's and here Eilmes had a very good game going against Morris, blundered, and lost. This defeat depressed him so much he also lost his second game to Morris. Meanwhile Wade was chasing Erickson's king but could never quite nail him and lost too much material in the effort so Erickson's counter-attack won the game. In their second game, Wade won quickly with a smashing king-side attack. Wade and Morris led each with 2½ while Erickson had a 2-2 score.

Final round games were at Eilme's on Feb. 22nd. Morris could have drawn Erickson, but got the cart before the horse and lost. Meanwhile, Wade won with a queen-side attack over Eilmes to come within one victory of winning the tournament.

Morris had a won game over Erickson, went pawn grabbing and lost his rook when a pawn proved poisonous. Poor Morris nearly blew his top with frustration! Meanwhile Wade became another picture of frustration, losing a tournament game for the first time in his life to Eilmes. So to the surprise and great chagrin of the others, Erickson once again won the tournament!

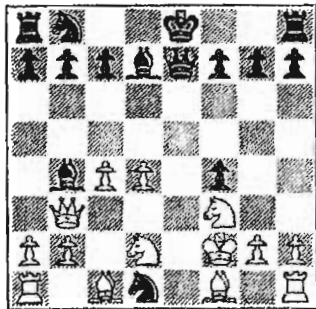
	W	L	D	SCORE				
1. Erickson	W4	L4	W2	L2	W3	W3	4-2-0	4 - 2
2. Wade	D3	W3	L1	W1	W4	L4	3-2-1	3½-2½
3. Morris	D2	L2	W4	W4	L1	L1	2-3-1	2½-3½
4. Eilmes	L1	W1	L3	L3	L2	W2	2-4-0	2 - 4

A third tourney is in progress. Results in these tournaments have not conformed with ratings, tournament performance or with Puget Sound League performances. There have been several interesting games played.

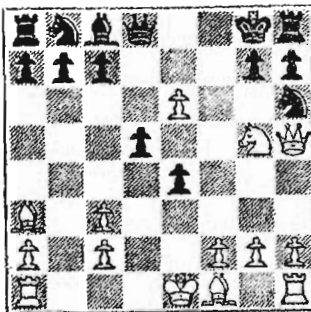
CLIPPINGS

Cliff Dolph was kind enough to send the story about Bobby Fischer and we reproduce it from the Saturday Review of Jan. 1, 1958.

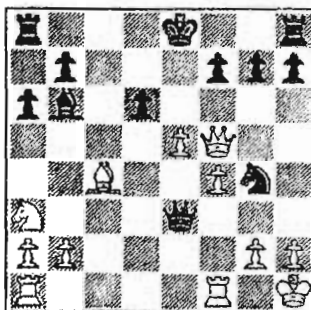
The positions below are from a 1951 copy of Chess Review, in case we have forgotten how chess was played in those days.



11 K-N1                      N-B6!!  
12 P-KR3                    B-R5!  
Resigns



11 Q-B7!  
12 PxN mate                      NxQ



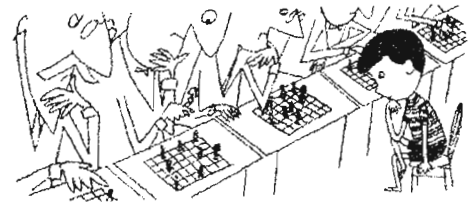
19 . . . .                      Q-N8!  
20 RxQ                        N-B7 mate!

•• Curiously enough, as part and parcel of the new Era of the Egghead, which we mentioned last month, we are in the throes of something which looks very much like a Great Chess Revival. Chess clubs are booming, more young people are playing better chess in schools, and every now and then, in the advertisements, you see girls playing chess. (The pieces are invariably set up in charming designs, but impossible playing positions.) Even the two national organizations, long rivals, the U.S. Chess Federation led by Oklahoma's Jerry Spann, and the American Chess Foundation led by New York's Walter Fried, have buried the hatchet. "We are trying to spread the gospel," says Fried, "that chess is not hard, it is not slow, and it is not anti-social . . . Aw hell, let's not kid ourselves. Our idea is to get a team which can beat the Russians."

•• Actually, our most promising player is a kid—the fourteen-year-old Brooklyn boy, Bobby Fischer. Last month, Fischer defeated thirteen other chess Masters to win \$600 and the Lessing J. Rosenwald tournament for the U.S. championship. It was an occurrence which was called by Hans Kmoch, coach of the Manhattan Chess Club, "the greatest miracle in the his-

tory of chess"—which is quite a miracle since there is, on a tablet in a pyramid at Gizeh, an inscription which concerns chess and which dates back 3,000 years. Born in Chicago, Fischer attends Erasmus High. His parents are now separated, and he lives with his mother who is a trained nurse but does not play chess. He was, in fact, taught by an older sister, who now no longer plays, when he was six. Tall, thin, and nervous, he invariably carries one or more Russian chess books, which he cannot read but out of which he can play the games. Up in his school work, but not outstanding, he likes Spanish and tennis "a little bit." Otherwise his life is entirely chess, and even in tournament games (in which forty moves must be made within two-and-a-half hours on each player's clock) he usually gets up after moving and wanders around looking at other games. Our theory was that he was doing this because, in a game involving such terrific mental tension, only the look at another game could break the tension and enable him to go back to his own game with a refocused mind. It seemed like a good theory, but Fischer wouldn't buy it. "Naw," he said, "I just like to look at what's going on." He credits one teacher, Carmine Nigro, but just barely. "When I was eleven," he says in one of his longest speeches to date, "I just got good."

•• The man whom Fischer dethroned (although they drew in the one game they played each other) is Samuel Reshevsky, who is not only America's only International Grand Master but also the only man in the country who makes a living out of chess. "Let's put it this way," he says, "I'm the only one who's trying to make a living." Now forty-six, small in size and incredibly impassive-looking, Reshevsky too



was a child prodigy. Born in Poland (the Germans killed his three sisters and a brother), he taught himself to play by watching his father, and, at five, in his first real game, beat him. In this country at twelve he gave up chess completely to finish high school

and graduate from the University of Chicago. "I forced myself to give it up," he said. "It was the kind of discipline I needed—and needed it for my chess too." He believes such a course might work out well for Fischer—which is undoubtedly good advice, since Reshevsky, now an American citizen, has played four draws against Russian champion Smyslov, and his record against Russian ex-champion (Siberia?) Botvinnik is one win, three draws, and no losses. Of Fischer Reshevsky has nothing but the highest praise. "In this tournament, though," he says, "psychologically we all underrated him. We all played badly, including myself." Now off on a countrywide, paid tour, Reshevsky has been witnessing the Great Chess Revival at first hand. "People think you have to be a mental giant," he says, "to play chess. You don't. I'm not much over five feet and I'm not outstanding in any other field. I have met many chess masters who are below average in I.Q. My wife knows the moves. I call that playing. After all, the whole thing's relative. There are some people who would say that about me. Maybe Fischer, for example."

—CLEVELAND AMORY.



# Ratings

# Tacoma News

SFC ROBERT KARCH, WCF Ratings Statistician, stopped by DICK VANDENBURG in Boise, Idaho, and is now computing ratings from the back issues of the Idaho Chess Quarterly. Result is a truly Northwest Rating List.

Here is the Northwest Master-Expert top player list after the Washington Open. Other ratings will be published in the near future.

## MASTERS (4)

Dake, Arthur W. ....	2412
Pupols, Viktors .....	2200
Ulvestad, Olaf I. ....	2274
Zemgalis, Elmars .....	2231

## EXPERTS (18)

Ballantine, Charles .....	2010
Baumwell, Dr. Max .....	2048
Bills, William A. ....	2038
Bishop, George .....	2074
Buckendorf, Glen .....	2006
Dalbergs, Ivars .....	2126
Griffiths, Charles .....	2103
Harrison, David .....	2039
Holmes, Vernon M. ....	2036
Joachim, Charles .....	2031
Jones, Ken R. ....	2061
McCormick, James H. ....	2142
Moore, Gerald .....	2023
Patterson, G. S. G. ....	2038
Seglins, Vicsturs .....	2111
Trembois, James .....	2085
Vandenburg, Dick .....	2035
Wade, Daniel E. ....	2020

Only the activities listed on the page of Idaho Chess News are included in the list given above. Washington tournaments and PSL matches given in this issue will change the above ratings in several cases.

SFC KARCH'S new address is SFC Robert A. Karch RA19354707, Co. A, Stu. Bn., USAIC, Ft. Holabird, Baltimore 19, Maryland.

## SEGLINS WINS FEB. 21 CLUB SPEED TOURNEY

VIESTURS SEGLINS, 1958 Washington State Champion, easily won a small club speed event with 8-0, Friday eve, Feb. 21st. Second was DAN WADE with 6-2. Tied for third place was MAX MAGE and F. H. HOWARD with 3-5 while MIKE FRANETT was last with 0-8.

Other speed events will be held.

The Tacoma Club started its annual Pierce County Tournament on Feb. 21. It is a five round Swiss with the top four finishers playing a round-robin for the championship. The four top juniors are to play for the Pierce County Jr. championship. One round will be played each Friday meeting night until the tourney is concluded. Entry is restricted to residents of Pierce County.

## Results of the first round:

Hewitt vs. Holmes, adjourned, Somsen won over Carlson, Lockhart downed Coubrough, and Faithfull defeated Frank.

Only eight thus far but all of the top contenders are competing. Several juniors are expected to enter with belated first round games. The only junior in the above eight is SCOTT LOCKHART the writer of these lines.

A group of Tacoma juniors from both Stadium and Lincoln high schools wish to play matches with any Seattle high school team. Write Scott Lockhart, 1116 North Lawrence, Tacoma, Wash.

## TACOMA CLUB LADDER

V. Holmes.....	975	C. Carlson.....	672
C. Hewitt.....	827	T. Dolle.....	663
D. Somsen.....	762	S. Lockhart.....	638
L. Coubrough...	729	R. Karch.....	627
R. Collins.....	718	D. Hamilton.....	624
R. Loughheed...	702	G. Faithfull.....	619
		J. Hanson.....	577

Tacoma won their first PSL match of the season when they beat McNeil 6 to 4. Unger (black) vs. Somsen (white) was adjudicated a difficult win for Somsen who was two pawns ahead at quitting time.

The position with White to move:

2r3kl, lp2qplp, r5pl, 8, Q2P4, P3PPP1, 5  
P2, R4RK1. 1.Q-N4,Q-Q2; 2.KR-B,R/3-QB3;  
3.RxR,RxR; 4.K-N2,Q-B2; 5.P-Q5,R-B5; 6.Q-  
N2,R-B7; 7.Q-B6,R-Q7; 8.P-K4,Q-B7; 9.R-KB  
Q-B4; 10.P-R4,P-N3; 11.P-N4,P-R3; 12.Q-R4  
K-N2; 13.R-KR1,Q-K6; 14.P-Q6,Q-B5; 15.P-K  
5,R-Q4; 16.P-N5,QxNPch.; 17.QxQ,PxQ; 18.  
R-QN1,RxKP; 19.RxP,R-Q4; 20.R-R6,K-B3; 21.  
K-B,K-K3; 22.K-K2,K-Q2; 23.K-K3,K-K3; 24.  
P-R5,R-Q8; 25.R-N6,R-Q4; 26.P-R6,R-R4; 27.  
K-Q4 and crosses over to win on move 42!

# Clubhouse News

## SEATTLE CHESS CLUB ACTIVITY

Tourney Director MAURICE HENION and Secretary JOHN GELL have been active of late and the club is now staging 10 second per move speed tournaments each Friday evening. The tournaments start at 7 o'clock but late comers can enter. On Friday, Feb. 7, ten players engaged in a speed tourney. Included in the lists of this affair were FRANK FORRAY, WALT CONNER, MAURICE HENION, DAVID ERICKSON and JOHN GELL. We did not get the names of the other five players and received no report on the outcome. We heard through the grapevine that FORRAY won it.

On Friday, Feb. 14, ten players got together for another speed affair. We happened to get to the club before results were erased from the blackboard so can give you more details of this event.

DAVID HARRISON and WALT CONNER finished on top each with 8-1. Whether or not there was a playoff, we cannot say. HARRISON'S only loss was to CONNER while CONNER lost his game to HENION. HENION'S score was 7-2 with losses to HARRISON & MAKENS. MAKENS was fourth with 6-3 with losses to the two leaders and DAVID ERICKSON. ERICKSON scored 5-4 losing to all three leading players and to COREY. In sixth was COREY with 4-5 losing to the 4 leading players and LEWIS. LEWIS had a 3-6 score winning games from COREY, HAKE and GINTHER. JOHN GELL also scored 3-6 winning from LEWIS, HAKE and GINTHER. In ninth was HAKE with 1-8 while last came GINTHER with 0-9. The two tailenders it seems, forfeited seven games apiece.

Conner	8-1	Corey	4-5
Harrison	8-1	Gell	3-6
Henion	7-2	Lewis	3-6
Makens	6-3	Hake	1-8
Erickson	5-4	Ginther	0-9

The Seattle Chess Club, located in room 604 in the Central YMCA, 4th Avenue and Madison, has perked up considerably. If the club's secretary would mail news to the editor, 11023 25th N.E., we will see that the club gets ample publicity.

In mid-February, members were signing up for the annual club championship tourney which is to be a Swiss.

# Portland Tournaments

## SEATTLE CHESS CENTER REPORT

The tournament reported several months ago in which strong men PUPOLS, PATTERSON, VELLIAS, O'BRIEN, and MOORE competed, never was completed. O'BRIEN and MOORE left the city and the others never seemed to be able to get together for more games. PATTERSON, with a narrow lead over PUPOLS and VELLIAS, had led when action terminated.

We can safely report that the scheduled ten game match between PUPOLS and EDBERG is finished after only four games with PUPOLS the winner  $3\frac{1}{2}-\frac{1}{2}$ .

## 1958 PORTLAND INVITATIONAL

A six player round-robin is scheduled for the Portland Club, 711 Dekum Building. The date is March 8-9 starting at 9 a.m. 5 Oregon and 5 Washington players received invitations and the first 3 from each state to accept can get in. Entry fee is \$5 and the tourney has 3 prizes, \$30 1st, \$20 2nd and \$10 3rd. It will be U.S.C.F. rated.

Oregon players receiving invitations : Fred Byron, Ivars Dalbergs, H. Hughart, Don W. Johnson and Duane Meador.

Washington players receiving invitations: Tom Makens, Dr. A.A. Murray, Viktors Pupols, Viesturs Seglins and Dan Wade.

Register with E.G. SHORT, 9910 N. Jersey, Portland 3, Oregon.

## PACIFIC NORTHWEST OPEN TOURNEY

APRIL 12-13 AT PORTLAND YMCA. 8:45 a.m. starting time Saturday, April 12th. A five-round Swiss, median tie-breaking. Trophies awarded for first, second, and third. Minor trophies awarded to winners of Class B and Class C. Entry fee is three dollars.

The organizers have arranged for a catering service as in past Portland tourneys.

For more information, or advanced registration, write D. W. JOHNSON, 6705 North Borthwick, Portland 17, Oregon.

Don't overlook the 1958 Pacific Northwest Open in Portland. It is scheduled one week before the INLAND EMPIRE OPEN.

# JUNIOR CHESS NEWS

by Schroedel

## WADE SCORES 8 - 1 IN SIMULTANEOUS

DAN WADE took on seven junior players and two seniors in a simultaneous match on Sunday, Feb. 16th at the Seattle Club. He won 7-0 over the juniors and split 1-1 his other two games.

Junior players competing were DAVID GRANNIS of Lincoln, JOHN GARROTT who is a Kent graduate, and PHIL MOORMANN, BUZ EDDY, WILLY BRANDAL, JOHN SCHROEDEL and BILL WILLENBERG of West Seattle. Seniors were JOHN RING, chess club president and TOM MAKENS. MAKENS was the lone winner although two of the juniors, GARROTT and MOORMANN, almost won. EDDY was the last player to fall.

In January, SFC ROBERT KARCH took on a group of ten juniors winning seven and losing three. Even if defeats are many, such events stimulate chess activity.

## JIM MUNRO - HIGHLINE CHAMPION

JIM MUNRO scored 16-2 in a ten player, double round-robin held at Highline recently to win the Highline H. S. championship.

Giving Munro both of his losses was CHRIS NAPJUS who placed second with a 15-3 score. CHRIS CALLIGAN took third with 12-6 and DICK HIATT and DON ALSPACH both posted 11-7 scores. These top five players are going to make up the Highline team in the Junior Chess League.

## DON COREY WINS SPEED EVENT

DON COREY won a 10 second per move speed tourney at the Seattle Chess Club on Saturday Feb. 1st. COREY scored 5-1. Second was DAVE GRANNIS of Lincoln with 4 $\frac{1}{2}$ -1 $\frac{1}{2}$  and PHIL MOORMANN of West Seattle took third with 4-2. MIKE FRANETT of Seattle Prep took fourth with 3 $\frac{1}{2}$ -2 $\frac{1}{2}$ . GALE HAKE of Lincoln took fifth with 2-4. J. LEE, a new junior player, also scored 2-4 and in last place was BUZ EDDY of West Seattle with 0-6.

Junior players may look forward to more such events at the Seattle Chess Club following the current Seattle Club Championship.

## HIGH SCHOOL NEWS

Besides the Junior High School League, composed of Queen Anne, Highline, Lincoln and West Seattle High Schools, there will be a North-South match between North's Queen Anne-Lincoln on one side and Highline-West Seattle on the other. Also wanted is a match between the Puget Sound League Champions (Kitsap) and a junior All-Star team. During spring vacation, a junior All-Star team will make a barn storming tour of Idaho and California!

## WEST SEATTLE

A W. Seattle junior vs. senior match is in the works. MAX MAGE donated a set of WCL Year Books to the W. Seattle H. S. library.

## OTHER NEWS

KENT JOHN GARROTT reports that Kent-Meridian H. S. has a chess club. HOLLIS PAUL is the club's president.

TACOMA A group of Stadium-Lincoln H. S. juniors want a match. Write 1116 No. Lawrence

PLACE	PLAYER'S NAME	-1-	-2-	-3-	-4-	-5-	-6-	-7-	-8-	-9-	-10-	FINAL SCORE	
		Mun.	Nap.	Cal.	Hiatt	Als.	Hom.	Hud.	Ehle	Burn	Roy	Won	Lost
1.	Jim Munro .....	XX	0	2	2	2	2	2	2	2	2	16	- 2
2.	Chris Napjus .....	2	XX	2	1	1	2	1	2	2	2	15	- 3
3.	Chris Calligan ...	0	0	XX	2	2	0	2	2	2	2	12	- 6
4.	Dick Hiatt .....	0	1	0	XX	2	2	2	2	0	2	11	- 7
5.	Don Alspach .....	0	1	0	0	XX	2	2	2	2	2	11	- 7
6.	Alf Homstad .....	0	0	2	0	0	XX	2	2	2	2	10	- 8
7.	Del Hudson .....	0	1	0	0	0	0	XX	0	2	2	5	- 13
8.	Larry Ehle .....	0	0	0	0	0	0	2	XX	2	1	5	- 13
9.	Bob Burns .....	0	0	0	2	0	0	0	0	XX	2	4	- 14
10.	Norman Roy .....	0	0	0	0	0	0	0	1	0	XX	1	- 17

This is the largest high school tournament held this year. The event started in December of 1957.

Mr. Alf Homstad, who finished sixth, is the Highline Chess Club advisor.

# JUNIOR LEAGUE NEWS

by Schroedel

The 1958 Junior Chess League got off to a flying start with first round action finding West Seattle winning over Queen Anne by a  $8\frac{1}{2}$ - $1\frac{1}{2}$  score and Highline barely edging out Lincoln by a  $5\frac{1}{2}$ - $4\frac{1}{2}$  count. Second round play found West Seattle taking the league lead in defeating Highline  $5\frac{1}{2}$ - $2\frac{1}{2}$  while Queen Anne's 6-4 triumph over Lincoln sent that school to its second defeat. The four schools are to play a triple round-robin making nine matches for each school so there are seven rounds left to play.

On Jan. 22nd, at Queen Anne, the visiting West Seattle team thumped the home guard  $8\frac{1}{2}$ - $1\frac{1}{2}$ . Four Westsiders scored two points in the rout while HOWARD BRANDT scored  $1\frac{1}{2}$  for all of the losing team's points.

<u>WEST SEATTLE H.S.</u>	$8\frac{1}{2}$	<u>QUEEN ANNE H. S.</u>	$1\frac{1}{2}$
Al Bender	2	Richard Derham	0
Willy Brandal	$\frac{1}{2}$	Howard Brandt	$1\frac{1}{2}$
Phil Moormann	2	Gary Franklin	0
John Schroedel	2	George Waring	0
Bill Willenberg	2	Mike Bolenbaugh	0

On Sunday, Jan. 26th, at the Seattle CC Highline edged Lincoln  $5\frac{1}{2}$ - $4\frac{1}{2}$ . With the score knotted at  $4\frac{1}{2}$ - $4\frac{1}{2}$ , JIM MUNRO won the remaining game on first board to take the match.

Highline forfeited third board making a harder job for the remaining quartet of players. Lincoln's second board man, GALE HAKE, played his last match now being in the Merchant Marines.

<u>HIGHLINE H. S.</u>	$5\frac{1}{2}$	<u>LINCOLN H. S.</u>	$4\frac{1}{2}$
Jim Munro	1	Dave Grannis	1
Chris Napjus	$1\frac{1}{2}$	Gale Hake	$\frac{1}{2}$
Chris Calligan	0*	Fred Ginther	2*
Dick Hiatt	2	Wally Green	0
Don Alspach	1	Jerry Scordan	1

\* Forfeit.

The second round of play found Highline suffering defeat at West Seattle, the host 5 winning  $5\frac{1}{2}$ - $2\frac{1}{2}$ . Because of the late hour, two games were unplayed but could not affect the match's outcome as W. Seattle had  $5\frac{1}{2}$  points.

This match was played on Feb. 13th. W.S. team captain AL BENDER promoted JOHN SCHROEDEL to first board because of his showing in the Washington Open.

<u>WEST SEATTLE H. S.</u>	$5\frac{1}{2}$	<u>HIGHLINE H. S.</u>	$2\frac{1}{2}$
John Schroedel	$1\frac{1}{2}$	Chris Napjus	$\frac{1}{2}$
Al Bender	0	Jim Munro	1
Willy Brandal	2	Chris Calligan	0
Phil Moormann	1	Dick Hiatt	0
Buz Eddy	0	Don Alspach	1
Bill Willenberg	1	Don Alspach	0

At the Seattle Chess Club on Feb. 23, under-strength Lincoln lost to Queen Anne, 6-4. The loss pushed Lincoln into last and put Queen Anne into a tie for second place with Highline. Lincoln had to use 3 players who do not attend Lincoln in order to have a team at all.

<u>QUEEN ANNE H. S.</u>	6	<u>LINCOLN H. S.</u>	4
Howard Brandt	0	Dave Grannis	2
Dick Derham	1	Mike Frannett	1
Gary Franklin	2	( Forfeit )	0
George Waring	1	Don Elliott	1
Mike Bolenbaugh	2	Buster Kravenas	0

## LEAGUE STANDINGS

	W	L	PF	PA			
West Seattle	2-0	14-4			Queen Anne	1-1	$7\frac{1}{2}$ - $12\frac{1}{2}$
Highline	1-1	8-10			Lincoln	0-2	$8\frac{1}{2}$ - $11\frac{1}{2}$

## INDIVIDUAL RECORDS

Phil Moormann (WS)	3-0	Don Elliot (L*)	1-1
Bill Willenberg (WS)	3-0	Mike Franett (L*)	1-1
John Schroedel (WS)	$3\frac{1}{2}$ - $\frac{1}{2}$	Jerry Scordan (L)	1-1
Dave Grannis (L)	3-1	Howard Brandt (QA)	$1\frac{1}{2}$ - $2\frac{1}{2}$
Willy Brandal (WS)	$2\frac{1}{2}$ - $1\frac{1}{2}$	Buz Eddy (WS)	0-1
Al Bender (WS)	2-1	Gale Hake (L)	$\frac{1}{2}$ - $1\frac{1}{2}$
Dick Hiatt (H)	2-1	Chris Calligan (H)	0-2
Jim Munro (H)	2-1	Gary Franklin (QA)	0-2
M. Bolenbaugh (QA)	2-2	Wally Green (L)	0-2
Chris Napjus (H)	2-2	B. Kravenas (L*)	0-2
Don Alspach (H)	1-1	Dick Derham (QA)	1-3
		George Waring (QA)	1-3

(L\*) Played for but do not attend Lincoln.

## LEAGUE SCHEDULE

March 1.	W. S. vs. Linc.	April 13.	W.S.-Linc.
March 2.	Q. A. vs. High.	April 26.	W.S.-Q.A.
March 15.	Linc. vs. High.	April 27.	Linc-High
March 16.	W. S. vs. Q. A.	May 10.	W.S.-High
March 29.	W. S. vs. High.	May 11.	Linc-Q.A.
March 30.	Q. A. vs. Linc.	May 24.	Q.A.-High
April 12.	Q. A. vs. High.	May 25.	Linc-W.S.

Schedule prepared by Buz Eddy.

1958 WASHINGTON STATE JUNIOR

SAT. SUN., MAY 3 - 4.

FOR PLAYERS UNDER TWENTY-ONE

# POSTAL GAMES

## ANNOTATED BY ULVESTAD

Section 56A-6A  
 Cairncross                      Howard

1. P-K4                              P-K3  
 2. P-Q4                              P-Q4  
 3. P-K5

Over-extension, but not necessarily bad. ... P-QB4

4. P-QB3                              PxP  
 5. PxP                                N-K2

Black should delay his King side development as White has few early attacking chances in this line. 5.. N-QB3 was in order.

6. N-KB3

Steinitz theory says an early center pawn advance to the 5th rank should be backed up by P-B4 as soon as possible. e.g. 6. P-B4, N-QB3; 7. N-KB3, Q-N3; 8. N-B3, N-B4; 9. B-N5. White has a powerful pawn wedge as compensation for pressure on his Q4.

6.                                      QN-B3  
 7. N-B3                                N-B4  
 8. P-QR3

Unnecessary. B-K2 is best.

8.                                      P-QN3

A mistaken idea, congesting Black's Q side. 8. ..B-K2 to develop normally was in order.

9. P-QN4                              B-N2  
 10. B-K3

If Black should now reply 10...Q-Q2; 11. P-KN4! is very disorganizing.

10.                                      B-K2  
 11. B-Q3                              NxB  
 12. PxN                                O-O  
 13. O-O                                QR-B1  
 15. K-R1                              <sup>14 N-K2, B-K5</sup>

This allows strong counter play. 15. NxB, followed by R-B3 is much stronger.

15.                                      BxKP  
 16. BxPch                              KxB

Black K-R1 maintaining the two Bishops would be better.

17. Q-Q3                                P-N3

Needlessly weakening. Black should play K-N1.

18. QxB                                K-N2  
 19. N-N5                                R-B2  
 20. R-B6

Missing a tactical opportunity. e.g. 20. RxPch! QRxR; 21 NxPch., K-N1;

22. NxQ.  
 20.                                      Q-K1  
 21. N-B4                                R-R1

A tactical error. He could have resisted stubbornly by playing ..N-Q1.

22. N/B4xPch                            PxN  
 23. NxP                                resigns.

White conducted the attack very well from move 19.

Section 56B-11B

Lyberger                              Spatz

1. P-Q4                                N-KB3  
 2. P-QB4                                P-K3  
 3. N-KB3                                B-N5ch  
 4. B-Q2                                BxBch  
 5. QxB                                P-Q4

6. P-K3                                O-O  
 7. B-Q3                                P-B3  
 8. N-B3                                QN-Q2  
 9. O-O                                PxP  
 10. BxBP                                P-K4  
 11. PxP

An error. 11. Q-B2 instead followed soon by QR-Q1.

11.                                      NxP  
 12. Q-K2

This allows an annoying pin White would have done better with 12. QxQ and 13. NxNch. (Otherwise he loses a piece)

13. PxN, RxQ; 14. QR-Q1, and White's play on the only open file gives good drawing chances despite his broken K-side.

12.                                      B-N5  
 13. QR-Q1                                Q-K2  
 14. B-N3                                NxNch  
 15. PxN                                B-R6  
 16. KR-K1                                N-Q4!  
 17. K-R1                                NxN  
 18. PxN                                B-K3  
 19. BxB

White has defended the past several moves correctly, but now 19. R-Q4, developing the rook on an important open rank gives optional threats of R-K4 or of doubling and perhaps trebling on both Q and KN files. In general it is better not to exchange on the opponent's offer of same. In this case, Black gets important targets in White's QBP and QRP.

19.                                      QxB  
 20. R-KN1                                P-KB4  
 21. P-KB4 (continued next pg.)

-----

Have you ever wished you could get some lessons in chess from a Master? Here is your chance. Correspondence lessons are given by Ulvestad for a modest fee. Also personal lessons may be had at the Seattle Chess Center, 718 Pine Street, Seattle 1, Wash. Write or telephone for further particulars.. MU 7788. After March 16, MU 2-7788 or EM 3-0034. Individual instruction or group classes are available.



# POSTAL CHESS

Postal Chess Director  
R. R. Merk  
1026 E 71  
Seattle 15, Wash

Send entries of 50¢ per section of postal chess to the Postal Chess Director.

Postal games completed in February				Points	Cont'd from previous page	
1/22/58	57B-1A	Bennett	1	Bemis	0 60	Weakens White's K4 and the long diagonal to the White K. 21. Q-N2 would have kept Black busy protecting weaknesses for awhile. (Heavy pieces are always most useful when threatening). The White Q. at N2 menaces on both the file and the long diagonal. 21. ---- QR-K1 22. P-B4 Q-K5 ch 23. R-N2 R-B3 24. QR-KN1 R-N3 25. P-KR3 RxR 26. RxR QxKBP Neatly done. 27. Q-Q3 Q-K4 28. Q-B2 P-B5 29. PxP QxP 30. Q-N2 R-K4 Closing the diagonal and defending his QNP indirectly 31. QxP Losing quickly, there was some play with 31. R-N4 31. ---- R-K8 mate in 6. White's replies are all forced from here on. Incisive play by Black
	57B-1B	Bennett	1	Bemis	0 60	
1/24/58	56B-10A	Lyberger	1	Van Natta	0 54	
1/26/58	56A-2A	Skarsten	1	Dickson	0 48	
1/27/58	57A-3A	Weaver	1	Bever	0 16	
	57B-3B	Husby	1	Weaver	0 101	
1/28/58	57A-3A	Husby	1	Phillips	0 62	
1/29/58	56B-9B	Gemar	1	Phillips	0 76	
1/21/58	57B-5B	Mills	1	Eilmes	0 36	
2/1/58	57B-8A	Kuvara	1	Guevarra	0 38	
	57B-8B	Kuvara	1	Guevarra	0 38	
2/2/58	57A-2A	Knapp	1	Bever	0 46	
	57A-2A	Knapp	1	Mage	0 62	
2/3/58	57A-3A	Phillips	1	Weaver	0 82	
	57A-3A	Phillips	1	Carter	0 68	
2/5/58	57A-4B	Husby	1	Carter	0 52	
2/6/58	57A-4A	Carter	1	Howard	0 70	
2/9/58	57B-3A	Gemar	1	Rogers	0 28	
	57B-3B	Gemar	1	Rogers	0 28	
2/11/58	57B-6A	Gemar	1	Kuvara	0 46	
	57B-7A	Gemar	1	Laine	0 56	
	57A-3B	Weaver	1	Phillips	0 40	
2/12/58	57A-4A	Roberts, H.	1	Carter	0 58	
	56B-11A	Spencer	1	Spatz	0 0	
	57B-5A	Scripps	1	Devenere	0 28	
	57B-5B	Scripps	1	Devenere	0 28	
	57B-7A	Scripps	1	Laine	0 65	
2/15/58	57B-1B	Bowerman	$\frac{1}{2}$	Bemis	$\frac{1}{2}$ 16	
	57B-10B	Benoit	1	Bennett	0 60	
2/21/58	56A-4A	Coubrough	$\frac{1}{2}$	Kaffenberger	$\frac{1}{2}$ 10	
	56A-4B	Coubrough	$\frac{1}{2}$	Kaffenberger	$\frac{1}{2}$ 10	
2/24/58	57A-4A	Spatz	1	Roberts, H	0 40	

Sections completed this past month.

	56B-9A	56B-9B	Points		57B-1A	57B-1B	Points
Phillips	x 1 1 1 $\frac{1}{2}$	x 0 1 1 1	6 $\frac{1}{2}$	Spatz	x 1 1 1 1	x 1 1 1 1	8
Gemar	0 x 1 1 1	1 x 1 0 0	5	Bowerman	0 x 1 1 1	0 x 1 $\frac{1}{2}$ 1	5 $\frac{1}{2}$
Brookshire	0 0 x 0 1	0 0 x 0 0	1	Bennett	0 0 x 1 0	0 0 x 1 1	3
Benson	0 0 1 x 1	0 1 1 x 1	5	Bemis	0 0 0 x 1	0 $\frac{1}{2}$ 0 x 1	2 $\frac{1}{2}$
Waldron	$\frac{1}{2}$ 0 0 0 x	0 1 1 0 x	2 $\frac{1}{2}$	Gordon	0 0 0 1 x	0 0 0 0 x	1

	56A-4A	56A-4B	Points
Weaver	x 1 1 1 1	x 0 1 1 1	7
Weischer	0 x $\frac{1}{2}$ 0 1	1 x $\frac{1}{2}$ 1 1	5
Coubrough	0 $\frac{1}{2}$ x $\frac{1}{2}$ 1	0 $\frac{1}{2}$ x $\frac{1}{2}$ 1	4
Kaffenberger	0 1 $\frac{1}{2}$ x 1	0 0 $\frac{1}{2}$ x 1	4
Baron	0 0 0 0 x	0 0 0 0 x	0

The winner of the highest points in these sections is awarded an extension of six months to his membership in the W. C. F. unless they prefer to get two more sections of postal chess or a set of postal chess recorder albums.

POSTAL CHESS RATINGS

**A good way to improve your chess skill - is to PLAY BY MAIL**

**YOU HAVE AMPLE TIME TO REFER TO BOOKS ON THE OPENINGS, TO REFER TO SIMILAR SITUATIONS IN PUBLISHED GAMES, AND TO TRY VARIOUS MOVES ON THE BOARD, THE RESULT IS ADDED FINESSE THAT IS IMPRESSED IN YOUR MEMORY.**

**The entry fee is 50¢. Rules are sent, and PRIZES!**

SEND ENTRY TO R.R.MERK 1026 E. 71, SEATTLE 15,

"A" Division		"B" Division	
Wade	1779	Roberts, D.	1382
Woodward	1772	Scripps	1365
Weischer	1748	Lyberger	1362
Weaver	1725	Benson	1352
Spetz	1689	Smith	1351
Coubrough	1671	Kuvara	1304
Knapp	1639	Eilmes	1274
Howard	1626	McDonald	1252
Kaffenberger	1608	Haynes	1242
Mage	1595	Abrahamson	1230
Husby	1573	Youngman	1202
Skørsten	1561	Blums	1176
Phillips	1553	Raleigh	1159
Cairncross	1530	Bowerman	1155
Carter	1506	Skoglund	1151
Roberts, H.	1502	Litke	1150
Gemar	1496	Nichols	1149
Mills	1487	Lee	1140
Luters	1472	Watson	1136
Bever	1453	Spencer	1133
Dickson	1443	Fredstrom	1116
Merk	1343	Benoit	1110
Laine	1324	Cooper	1100
Vellias	1316	Hall	1094
Van Natta	1292	Bennett	1093
		Guevara	1074
		Rogers	1066
		Chapman	1050
		Funcan	1050
		Koenkow	1050
		Pifley	1050
		Quass	1050
		Sawyer	1050
		Bemis	1023
		Aldridge	1010
		Devenere	968
		Pierce	879

Gemar by winning 234 points this month has boosted his rating to 1496 and is promoted to the "A" Division.

Husby and Phillips toppled Weaver from top position to fourth place.

Husby advances from 21st place to 11th by his winning from Weaver and Carter.

We have bound copies of Washington Chess Letter for the years of 1950, 1951, 1952, 1955, 1956 and 1957 for sale at \$3.00 per volume.

WASHINGTON CHESS LETTER  
1026 E. 71, SEATTLE 15.  
Return postage guaranteed  
Form 3547 requested

B. B. Strachan  
5103 N.E. 15 Ave  
Portland 11, Oreg.

4/58

