

---

**WASHINGTON**

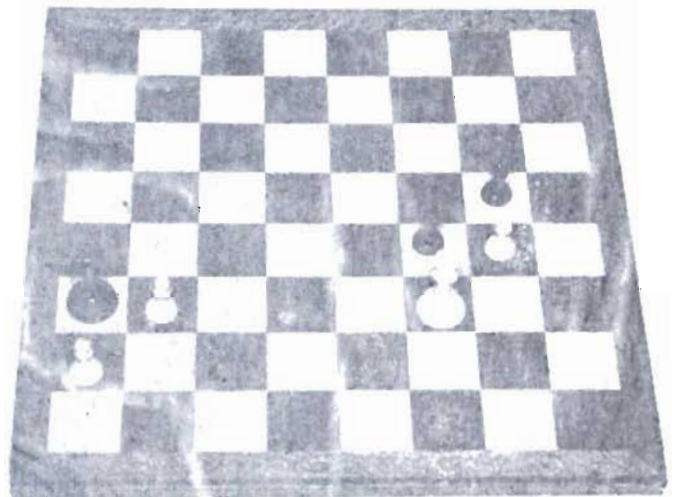
**CHESS**

*Nov. 1957*

**LETTER**

---

*INTRODUCING  
KOLTANOWSKI !*



**WASHINGTON CHESS LETTER**

OFFICIAL PUBLICATION OF

**Washington Chess Federation****EDITOR**

D. E. WADE 11023 25th N. E. SEATTLE 55

**PUBLISHER**

F. H. WEAVER 501 OLYMPIC PL. SEATTLE 99

**CIRCULATION**

R. R. MERK 1026 E. 71st SEATTLE 15

MEMBERSHIP DUES, \$2.00 A YEAR, INCLUDES SUBSCRIPTION (12 ISSUES). SEND MONEY TO W. H. RALEIGH, TREASURER, 4312 WOODLAND PARK AVENUE, SEATTLE 3, WASH.

**AFFILIATED W. C. F. CHESS CLUBS**

Seattle Spokane Tacoma Olympia West Seattle  
Kitsap Tri-Cities Boeings McNeil

Somebody - hell, everybody is going to notice that the chessboard on the cover is printed in reverse. So we thought we would explain that it is sideways. But then some low character will ask, "Then how come there is a pawn on Black's first rank?" Well, maybe it has just queened. So they ask, "How can it have just queened with Black still in check from the move before?" Well, uh, maybe the pawn was at R7 and captured a piece at N8.

FOR RATING PURPOSES ONLY

On our Club News page, we ran out of space while writing up the Kitsap Championship tournament.

Winner GEORGE REHBERG split his games, 1 to 1 with both Nourse and Almond and won 2-0 over Leininger for his 4-2 score. Nourse won 2-0 over Almond, lost 0-2 against Leininger and split 1-1 with Rehberg. Dr. Almond won 2-0 from Leininger, split 1-1 with Rehberg and lost 0-2 to Nourse. Leininger won 2-0 from Nourse, lost the rest.

When you get this the 1957-58 Puget Sound League scramble will already be one round old but this is written a week before the first round. We understand the Seattle Chess Center is going to be "loaded" with ULVESTAD, PUPOLS, EDBERG, GRIFFITHS and BELMUS on the team. This lineup may not be the actual one, but if it is, the rest of the League won't stand much of a showing.

Messrs. JOHN RING and MAURICE HEN-ION have over 70 members in their club at room 604 YMCA. They should be able to find a few fairly good players and make a fair showing of defending their championship won the last two seasons.

Tacoma is always a question mark. If their best players play in all of their matches they can be contenders. It is doubted their best will play in all matches.

Olympia Club's home matches will be held on the balcony of the Olympian Hotel. They have enough players and interest to make a very good showing.

Kitsap will use LEININGER, NOURSE DR. ALMOND, REHBERG and MAGERKURTH and should do well. No replacements seems to be their biggest weakness. If they get help from ZEMCALIS, they will be a contender.

West Seattle may win a couple of matches but will be outmanned in most of their matches.

Max Bader's Boeings Club team has little chance of winning more than one or two matches.

McNeil Island could easily fail to win a single match. Since all of their matches are home matches, they do have that advantage.

So it could easily end like this:  
1. Seattle Chess Center, 2. Seattle Club,  
3. Tacoma, 4. Olympia, 5. Kitsap, 6. W. Seattle, 7. Boeings, and 8. McNeil.

But don't bet on it!

# FRED HOWARD CAPTURES WOODPUSHERS

by Wade

FRED M. HOWARD with three wins and a draw won the 1957 WASHINGTON WOODPUSHERS, held Sunday, October 13th at the Seattle Chess Club. Fred's triumph was quite surprising as there were several more highly regarded players in the tournament. Last year's champion, LT. EUGENE LEININGER and VIESTURS SEGINS and CHARLES GRIFFITHS for example from past performances would rate as top contenders for the Woodpusher title with HOWARD, DAVID ERICKSON and V.W. BEVER filling out the top half of the 12 player event.

However, if tournaments always ended as predicted, there would be no need playing them. Fred Howard was red hot and won his opening game from Segins, a player he had lost twice to in two previous tournament meetings. JOHN GELL was a half hour late and so had to play his second tilt in half an hour at 40 moves per hour! Need we report that Gell lost? With two wins and greater confidence, Howard tangled with Lt. Leininger, the 1956 champion, and emerged from that fray with a draw. That left Lt. Leininger and Fred Howard tied for second with one game to play each with  $2\frac{1}{2}-\frac{1}{2}$ .

Howard had to play a Lincoln of Seattle high school student named GRANNIS in the final round while Leininger's opponent was David Erickson. Grannis was the second big surprise of the tournament having defeated Erickson, Charles Griffiths plus Gell to post a 3-0 score and needed "only" a draw with Howard to insure at least half share of first place.

With the title up for grabs, Grannis played poorly dropping two pawns in the opening and with that sort of help, Howard won the game with little trouble.

Meanwhile, Leininger was struggling to equal Howard's score in his game with Erickson. Like another David, David Erickson proved "Goliath" Leininger's downfall holding him to a draw.

This left Leininger and Grannis each with 3-1 scores and Grannis took 2nd with  $9\frac{1}{2}$  Solkoff Points to Leininger's 9.

Co-favorites Griffiths and Segins, both suffering early defeats, killed each other's championship hopes with draw game in the third round. Segins finished in a tie for fourth place with Erickson.

State Junior and Speed Champ Charles Griffiths had to settle for 6th spot.

Nearly half of the entrants were juniors of high school age. Grannis (Lincoln) Griffiths (Franklin), Eddy and Schroedel (West Seattle) and Hake.

TOM HAKENS directed and did a nice job of it. He started each round two hours apart. The first round started at nine and the following rounds started at 11, 1 p. m. and 3 p. m. The last game was completed at 6 p. m.

Unlike past Woodpushers, only two out-of-town players entered. Leininger & Knapp.

Place	Player	-1-	-2-	-3-	-4-	Score	Solk.
1.	Fred M. Howard	W-4	W-9	D-3	W-2	$3\frac{1}{2}-\frac{1}{2}$	9.5
2.	Grannis	W-5	W-6	W-9	L-1	3 -1	9.5
3.	Lt. Eugene Loingr.	W-10	W-7	D-1	D-5	3 -1	9.0
* 4.	Viesturs Sogins	L-1	W-10	D-6	W-7	$2\frac{1}{2}-1\frac{1}{2}$	9.0
* 5.	David Erickson	L-2	W-11	W-8	D-3	$2\frac{1}{2}-1\frac{1}{2}$	9.0
6.	Charles Griffiths	W-11	L-2	D-4	W-9	$2\frac{1}{2}-1\frac{1}{2}$	7.5
7.	V. W. Bever	W-12	L-3	W-11	L-4	2 -2	6.5
8.	Buzz Eddy	L-9	W-12	L-5	W-10	2 -2	4.5
9.	John Gell	W-8	L-1	L-2	L-6	1 -3	11.0
10	John Schroedel	L-3	L-4	W-12	L-8	1 -3	7.5
11	Gale Hake	L-6	L-5	L-7	W-12	1 -3	7.0
12	Earl Knapp	L-7	L-8	L-10	L-11	0 -4	6.0

\* Tied for 4th place.

# SIMULTANEOUS      BLINDFOLD DISPLAY

AT SEATTLE CHESS CENTER    718    PINE ST.  
TUESDAY EVENING, NOV. 12, 7:30 P.M.

Players and spectators will be welcomed at exhibition by Olaf Ulvestad in which he will play eight simultaneous chess games "sans voir". No fee or charge will be made for the publicity event.



ULVESTAD

Ulvestad describes blindfold chess as an exercise in vivid imagery. Although not actually physically blindfolded the master sits out of sight of the chess boards, and the moves are called to him by the referee, who then makes his moves for him. The opponents are of course seated before the boards and have eight times as much time to study their positions as Ulvestad has in recalling a position to memory and then making his move.

Blindfold ability is a specialty not held by all masters. The first to popularize the spectacle was the American genius, Henry Pillsbury, in the nineteenth century, and he was followed by Blackburn, an Englishman. Reti, and Alekhine, in the early years of this century, travelled extensively putting on such demonstrations. In later years, Koltanowski, Najdorf, and Ulvestad have shown an aptitude for the difficult art.

Ulvestad is one of the few who have an ability to recall a total picture of a position. He can actually visualize in his mind the different pieces and squares in contrasting colors. Others describe their method as being like a tape recording being played back to rebuild the position of the pieces, and this is more a prodigious feat in detailed memory and concentration than is the picture recall with which Ulvestad is gifted.

Seattle Chess Center has been in operation for over three months, and gives every indication of being here to stay. Its clientele already is approaching sixty regular patrons plus the usual flow of transient players. These people are mostly new to the game, take lessons and progress through beginner to more advanced courses. Supervised tournaments are held in the various grades of study groups. A very popular form of instruction is the 50¢-a-game-versus-Ulvestad special, in which he gives comment, advice, and answers questions on the purpose and effectiveness of the moves that are made.

Readers of Chess Letter are urged to note and save the date, Tuesday, November 12, at 7:30 P.M., for a pleasant and instructive evening.

# OREGON OPEN

## 23 NOV. 24

Fellow chess-players:

The Oregon Open will take place this year on November 23-24. For the first time, this tournament will be 100% U. S. C. F. rated. It is to be a five-round Swiss System tournament with Median tie breaking, and the time limit will be 50 moves in two hours. Trophies will be awarded for 1st, 2nd, and 3rd places and, in addition, there will be special awards for the B and C class players finishing highest in the final standings. The nominal entry fee will be \$3.25, which includes rating charges.

Just as last year, the tournament will be held at the Oregonian Hostess House at 1320 S. W. Broadway, in Portland. The first round will begin promptly at 8:45 a. m. on Saturday, November 23rd. Harkness pairings will be used, at least for the early part of the tournament.

Washington players are especially invited to participate in this tournament which it is hoped will be a big, BIG success, but please bring chess clocks, boards and sets.

Incidentally, the tournament should be over by six o'clock Sunday evening, allowing Washington players ample time to return home. In fact, the scheduling of the rounds has been done with the convenience of Washington players in mind.

Entries and inquiries should be sent to DONALD W. JOHNSON, Tournament Director, 6705 N. Borthwick, Portland 17, Oregon.

You are assured of a hospitable welcome and a good time. Bring cars full of players so that you can share the fun and expenses.

Very truly yours,  
Donald W. Johnson  
Duane Meador

---

Sounds good, doesn't it? Well, last year it was a truly fine tournament with 12 Washington players driving down to share in the fun. In all there were 37 players in last year's Oregon Open and all of the top places were hogged by the visitors.

JIM MCCORMICK won the event with  $5\frac{1}{2}-\frac{1}{2}$ , upsetting OLAF ULVESTAD in the last round while LARRY TARO took second. Other high finishers were ULVESTAD, BOB EDBERG, VIC PUPOLS, TED WARNER and HOWARD WEAVER.

This large 37 player turnout was achieved even when the event was scheduled only one weekend after the annual Inland Empire Open in Spokane which had attracted 40 entries!

It is only about a four hour drive from Seattle to Portland and quite a bit less for our chess friends in Tacoma, Olympia and Yakima. It also gives the hardened Washington player a chance to meet altogether new opposition. We suggest players drive down in groups Friday evening and take in the town the night before opening round of play.

The Editor

# GEORGE KOLTANOWSKI'S

## "CHESS TEST"



Written especially for Chess Letter, by the distinguished editor, author, lecturer, and International Master.

A knowledge of the King's Indian Defense is a necessary bit of equipment for the chess student. There is no better way to learn about it than to play a sample game, as presented here by George Koltanowski, with full discussion of every move and its alternatives. The values of the moves are graded by a point system. You score your points for reference in the table that concludes the game, to determine your chess playing ability. Working out the moves without looking at the next line will improve your play by leaps and bounds.

THE OPENING MOVES ARE: 1. P-Q4, N-KB3; 2. N-KB3, P-KN3; 3. P-B4, B-N2; 4. N-B3, O-O; 5. P-K4, P-Q3; 6. B-Q3, ----- From now on try to work out Black's moves. Cover the score with a sheet of paper or cardboard, and lower it line by line. Whenever you have played a White move, stop and try to guess Black's move, which will be on the next line.

6.           ... B-N5     3 POINTS     -----  
The line adopted is aimed at the following:  
7. O-O, BxN; 8. QxB, N-B3; 9. B-K3, N-Q2; 10.  
N-K2, N/2-K4; and Black wins. If instead you  
played 6. ...N-B3; you can mark down only one  
point. (There will be penalty deductions in some  
of the following positions in case you goof, so  
study each move carefully before deciding.)  
-----
7.   P-KR3  
      ... BxN     1 POINT     If you played the Bishop back you deduct six  
points. Black realizes now that White has some-  
thing new up his sleeve or he would not have  
played 6. B-Q3.  
-----
8.   PxB  
      ... N-KR4   4 POINTS   Threatens BxP. The idea is to make White show  
his hand regarding the formation of the pawns.  
For 8. ..N-B3 you only get one point, as after 9.  
P-Q5, your knight gets chased. Score 4 for..P-K4.  
-----
9.   B-K3  
      ... P-K4     2 POINTS   This is a natural follow-up. You should challenge  
the center at once. For ...P-KB4; nothing, as  
10. PxP, gives White a King's side attack. For  
9. ...N-QB3; score one point.  
-----
10. P-Q5  
      ... N-B5     6 POINTS   Black would like to have White exchange one  
of his Bishops. 11. BxN, PxB; gives him the open  
King's file and the long diagonal for his Bishop.  
For playing 10. ...P-KB4; you get nothing. White  
would continue with 11. PxP, PxP; 12 P-B4. If  
you played 10. ...P-QB4; or 10...N-Q2; score two.  
-----

11.	B-KB1			
	... N-Q2	2 POINTS	The text will show why. For 11. ...P-KR4; no points. For 11 ...P-KB4 or 11 ...P-QB4; two points.	-----
12.	P-KR4			
	... N-B3	2 POINTS	Another natural. If now 13. B-R3, NxB; 14. RxN, N-R4; followed by 15. ...P-KB4. For 12 ...B-B3; or ..P-QR3; or ...B-R3; one point.	-----
13.	Q-Q2			
	... N3-R4	2 POINTS	Continues the idea. For B-R3 one point.	-----
14.	N-K2			
	... NxN	8 POINTS	An important decision. Black does not want to allow White to play N-N3. If you played 14 ...B-B3 (three points) you have good drawing chances after 15. NxN, NxN; 16. BxN, PxB; 17. QxP, BxNP; 18. R-QN1, B-B6ch; 19. K-Q1, P-N3. White has a slight edge in spite of the bishops of different colors.	-----
15.	BxN			
	... P-KB4	6 POINTS	Threatens ...P-B5; winning a piece. If White takes, Black intends to take back with the rook. If 15. ... N-B5; (see above note) you score three points.	-----
16.	B-KN5			
	... Q-Q2	2 POINTS	Also two points for ...Q-B1 or ...B-B3. Take off four points if you played ...N-B3.	-----
17.	P-B4			
	... NxP	6 POINTS	If instead ...P-KR3; (three points) there would follow: 18. BxN, PxB/R4; 19. PxKP, PxB; 20. P-K6, Q-K2; 21. PxNP, PxP; 22. RxP, with a difficult position. If 17. ...BPxP; (no points), then 18. BxN.	-----
18.	BxN			
	... PxB	-----		
19.	O-O-O			
	... PxP	1 POINT	You might as well be two pawns ahead instead of one.	-----
20.	QR-N1			
	... P-B6	5 POINTS	Your intention is to exchange queens, and also to have the pawns advanced far enough to counter-attack fast as possible. Better still would have been 20...Q-B4; (six points) because if then 21. B-N4, Q-K4; 22. P-R5 P-KN4; 23 B-K6ch, K-R1; 24. P-R6, B-B3; 25. R-K1, Q-Q5; 26 QxQ, BxQ; 27. RxP, BxP; etc.	-----
21.	B-Q1			
	... Q-B4	2 POINTS	Follows through.	-----
22.	R-N5			
	... Q-B5	2 POINTS	You get four points for 22...B-R3; because after 23. RxQ, BxQch; 24. KxB, RxR; wins easily.	-----
23.	QxQ			
	... RxQ	1 POINT	Forced.	-----
24.	K-B2			
	... B-B3	4 POINTS	Another pawn goes West. You lose four points if you played ...RxP.	-----

KOLTANOWSKI'S "CHESS TEST" -continued

25. R-N3  
 ... RXP 2 POINTS Also playable but much slower in effect would be ...BXP; for which we will allow one point.  
 -----
26. RxR  
 ... BxR 1 POINT Naturally.  
 -----
27. R-KN4  
 ... BXP 2 POINTS Connected with the next move this should win for Black. Keep that in mind in selecting the next.  
 -----
28. RxKP  
 ... R-KB1 4 POINTS This does it. White is hard pressed.  
 -----
- 29 R-K7  
 ... B-R5 2 POINTS Now if RxBP, P-B7; wins a piece. If 30. R-K4, P-KN4; wins easily too. Therefore White resigned.  
 -----

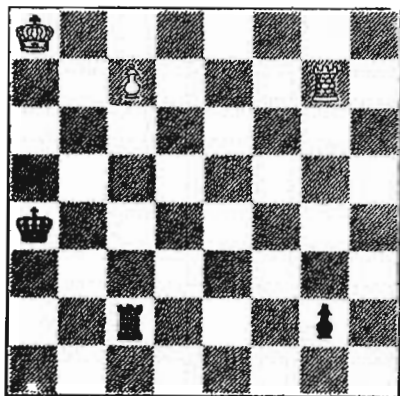
NOW ADD UP YOUR POINTS

66-71	EXPERT
52-65	CLASS A
45-51	CLASS B
36-45	CLASS C

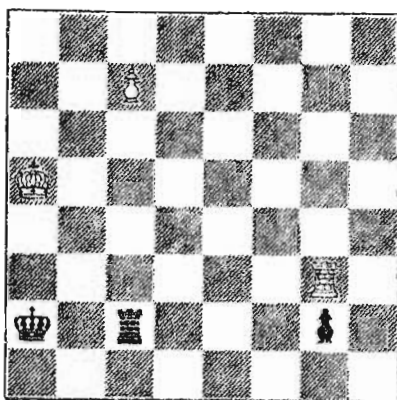
If you have less points, better study up. You have a lot to learn.  
 If you enjoyed this lesson, let us know, will you?

In addition to the "Chess Test" George Koltanowski sent us the following endgame study, one of the few endings Dr. Emanuel Lasker ever composed. Says Koltanowski, "This problem deserves to be engraved on his tomb."

**CLASSICAL STUDY**



White to play and win



NEXT MONTH

Kolty will use a game recently published in Chess Letter for his next "Chess Test", giving it the same thorough analysis as the typical game above. This should be of great interest to the participants, whom we will leave unnamed, and also to the readers who may have played over the game with no comment provided (except one faulty ??). We are secretive only to keep the surprise element as you score your points. Actually the game is a gem, and it deserves better attention than it was given several months ago.

1. K-N7 R-N7ch
2. K-R6 R-QB7
3. R-N4ch K-R6
4. K-N6 R-N7ch
5. K-R5 R-QB7
6. R-N3ch K-R7

7. RxP and wins.  
 (The basic winning idea in Q vs. R endings is to force Black into Zugzwang so he will have to move his Rook away from his King

Refer to next diagram--



# SOLVERS' CONTEST

## THIS MONTH

George Koltanowski, chess editor of the San Francisco Chronicle, has selected two positions for our solvers. Kolty pays our Northwest solvers a great compliment with that first endgame. He must think we are pretty sharp. It would be embarrassing if no one solved it, -so we will give a hint or two. The solution is straightforward, -no tricks or illusions. The pieces that apparently have to move do move, but where? After a half dozen moves White can describe the final sequence rather than detail it.

The second diagram is a standard two-mover. We remind new solvers that it is not enough to make winning moves. If Black can, by fantastic and heroic sacrifice, postpone checkmate an additional move, he is regarded as having won, so you have to take care of the wildest defense.

## LAST MONTH

Letters and postcards poured in, with solutions that were mostly right, and there was a welcome addition of some new solvers: Gifford, Hess, Fakkema, and Joachim. Conducting a contest is a pleasure when it draws a response that indicates it is wanted. We have decided to award subscription extension prizes on a basis of one month for each two entrants, dividing the total into three prizes. It wont be much, actually, but think of the honor! R'ar back and perform a miracle by solving these monsters.

Horton Thompson sent another advance letter with news about his gladiolus winning 22 ribbons and a Horticulture Sweepstakes Rosette at county fairs this season.

"Enjoyed visit to Yakima club" -Dolph

"Wish Wash. Open was week earlier"-Karch

"Enjoy these contests" -Fakkema

"Thoroughly enjoyed my first issue"-Gifford

"Just borrowed a copy, -\$2 inclosed"-Hess

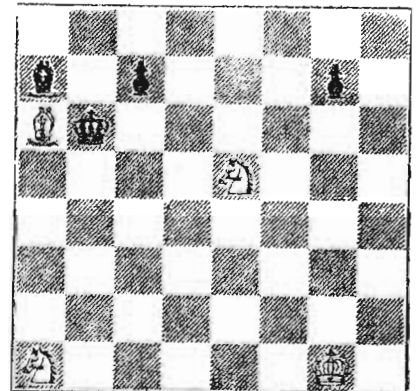
"You threw quite a curve on #2"-Oldham

- | #1. Problem | #2. Oddity      | #3. Ending    |
|-------------|-----------------|---------------|
| 1. R-N5 Any | Obviously it is | 1. QxN PxQ    |
| 2. Mate     | Black's move.   | 2. NxBPch RxN |
|             |                 | 3. R-Q8 mate  |
- (In #3, 1. NxBP was accepted as adequate.)

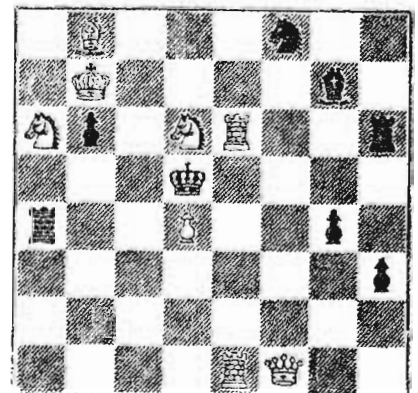
Correct solutions were received from Fass, Thompson, Joachim, Oldham, Jaensch, Ballantine, Bloomquist, Kittredge, Karch, Bader, Haffner, Fakkema, Gifford, Nourse, Dolph, King,

## NEXT MONTH

Koltanowski will again challenge our perspicacity with a couple pea-pickin' positions, and if Frank Fillery, the Vancouver Province chess editor, reads this, we would welcome any of his many world-famous compositions.



White to play and win



White to play and mate in 2

SEND SOLUTIONS TO F.H..WEAVER, 501 OLYMPIC PLACE, SEATTLE 99, BY NOV. 20th.

# TRI-CITY

The Tri-City Chess Club team visited Walla Walla Pen on Sunday, October 20 for a match with the inmates. Last spring a  $9\frac{1}{2}$  to  $4\frac{1}{2}$  loss was given the visitors. The score this time was little different, the prison team winning by a 11 to 7 score.

TRI-CITY CLUB	7	WALLA WALLA PEN.	11
K. Wm. Hess	$1\frac{1}{2}$	Ray	$\frac{1}{2}$ *
C. Groot	2	Jacobs	0
R. G. Spencer	1	Erb	1
B. Arbogast	0	Broham	2
F. J. Cooper	$\frac{1}{2}$	Johnson	$1\frac{1}{2}$ *
E. Hovermale	1	Davies	1
R. Turner	0	Young	2
H. Tedro	1	Bivens	1
J. Bond	0	Raine	2

\* Two games were not completed in the time available so draws were agreed on.

Club President FRANK COOPER is really trying to get the club moving. In a week he made around fifty calls to players who might join the club.

## CLUB LADDER ON OCTOBER 22

R.G. Spencer	1334	L. Brown	954
K. Wm. Hess	1332	L. C. Cole	948
J. R. McHenry	1198	R. Turner	914
B. Arbogast	1178	P. Palmer	900
F.J. Cooper	1130	G. Kopner	900
E. Hovermale	990	P. Prichard	826
I. Hogan	960	Reynolds	820
B. Moore	958	F. Grubb	808
		D. Warren	734

HESS has challenged SPENCER to a two game match for first place on the ladder.

A player's first night performance in the club is not counted. If he returns to the club, he is started on the ladder with 1000 points.

## CHESS GOSSIP

KEN MULFORD, former W.C.F. President, Chess Letter Publisher, is now married. We have no details. BOB EDBERG is now working for Seattle City Transit and has been missing from chess for some time. JIM MCCORMICK'S present address is New York City.

STAN SAWYER is now going to school in California. DON EILMES sold out his share of SEATTLE CHESS CENTER and is going to school in Everett. Tournament Director TOM MAKENS auctioned a large number of chess books, sold his chess equipment cheap, moved out of the Knickerbocker Hotel and presumably, out of Washington Chess. Looks like we need a new Tournament Director! The Editor, DAN WADE, will be much too busy to continue on as the Seattle Chess Club's appointed Tournament Director. This means some other player will have to handle club's team in the Puget Sound League. WADE will be going to work on Sundays too early to be able to play on the team.

WASHINGTON OPEN, JANUARY 18 - 19

(Details to be supplied by Tournament Director.)

## WHERE TO PLAY CHESS !

SEATTLE CHESS CLUB is open daily 1 p.m. to midnight. Located in room 604 Central YMCA at 4th and Madison.

SPOKANE CHESS CLUB MEETS ON Thursday evenings at the Desert Hotel.

SEATTLE CHESS CENTER is located on the street level at 718 Pine Street. Open daily from 2:30 p.m. to 12:30 a.m.

TACOMA CHESS CLUB meets on Friday evenings at the downtown public library.

YAKIMA CHESS CLUB meets at the Yakima YMCA on Mondays at 7 p.m.

TRI-CITY CHESS CLUB meets on Tuesdays at 7 p.m. in the Richland Community Hall located on George Washington Way.

WALLA WALLA VALLEY CHESS CLUB meets on Fridays at 7:30 p.m. in the Walla Walla YMCA.

OLYMPIA CHESS CLUB meets Mondays 7:30 p.m. in the Community Center. Plays Puget Sound League matches at Olympian Hotel.

WEST SEATTLE CHESS CLUB meets on second and fourth Friday evenings in the High Point Recreation Center.

Wade

# PUGET SOUND LEAGUE

by Wade

The 1957-58 Puget Sound League race got underway Sunday, October 27th. West Seattle shocked Seattle Chess Club 6 to 4, Seattle Chess Center trounced Boeings  $7\frac{1}{2}$  to  $2\frac{1}{2}$ , Kitsap overwhelmed McNeil  $8\frac{1}{2}$  to  $1\frac{1}{2}$  and the Tacoma vs. Olympia result is still unreported.

At the Seattle Chess Club, Wade won a quick game from Zwcers, Soglin's downed Vukonich twice and Erickson and Morris drew a game each with their respective opponents, Howard and Mage. This gave Seattle a 4 - 1 advantage. After that, Wade lost to Zwcers, Moormann lost twice to Weisscher, and both Erickson and Morris lost their second games to give West Seattle the match.

Zwcers is West Seattle's first board man but wished to play at a slower rate as 40 moves per hour was too fast for him. So Wade agreed to play him without clocks on second board. Result: They were finished with their games at least two hours sooner than the third, fourth and fifth board men playing with clocks at 40 moves per hour!

At the Seattle Chess Center, Ulvestad downed Bader twice, Griffiths handed Fass a double loss and ditto Vellias over Dorn. On fourth board, Boeings salvaged a draw with Eilmes winning  $1\frac{1}{2}$  to  $\frac{1}{2}$  over Boeing's Bjornson. Gillette scored two points for Boeings on fifth board beating Bransom.

Jack Nourse, writing about Kitsap's  $8\frac{1}{2}$  to  $1\frac{1}{2}$  win over McNeil, says the result will no doubt make Kitsap overconfident for the next match. McNeil's only win was Travis's win over Nourse in their first game. Travis played very well, planning well ahead & won it by playing good, sound chess.

Time was up before Leininger and Unger could complete their second game on the top board. Kitsap is willing to call it drawn and since it is no fault of a visiting team that games cannot be completed, we suppose it should be a draw and so it is reported.

The Forsyth position with Unger having White and Black to move was: 1K6, 1P4P1, 2P4P, P4Q2, 7p, rr3b2, 1kN2p2, 3R4

Unless we have the position wrong, it appears as though White has the advantage.

If the final position of the Unger-Leininger game is as we have it at the bottom of the opposite column, we must consider it a win for Unger. For the present we will treat it as a draw.

## ANOTHER RULE!

Accidentally left out last month was an important Puget Sound League rule.

10. No player may play on more than one team during a season. An exception can be made if a team drops from the league.

<u>SEATTLE CHESS CENTER</u> $7\frac{1}{2}$		<u>BOEINGS</u> $2\frac{1}{2}$	
Olaf Ulvestad	2	Max Bader	0
Charles Griffiths	2	Martin Fass	0
Russell Vellias	2	Ruppert Dorn	0
Don Eilmes	$1\frac{1}{2}$	Dale Bjornson	$1\frac{1}{2}$
Robert Bransom	0	Wm. Gillette	2

<u>WEST SEATTLE</u> 6		<u>SEATTLE CLUB</u> 4	
Eugene Vukonich	0	Vlosturs Seglin	2
Gerrit Zwcers	1	Dan Wade	1
Fred Howard	$1\frac{1}{2}$	David Erickson	$1\frac{1}{2}$
Max Mage	$1\frac{1}{2}$	Oliver Morris	$1\frac{1}{2}$
Ben Weisscher	2	Phil Moormann	0

<u>KITSAP COUNTY</u> $8\frac{1}{2}$		<u>MCNEIL ISLAND</u> $1\frac{1}{2}$	
Eugene Leininger	$1\frac{1}{2}$	Rod Unger	$1\frac{1}{2}$
Jack Nourse	1	Tod Travis	1
Dr. Almond	2	C. Sweezey	0
George Rehberg	2	J. Park	0
Chas. Magerkurth	2	Julian Galardo	0

Just arriving in the nick of time as we go to "press" is the result of Tacoma's match at Olympia.

<u>OLYMPIA CLUB</u> $7\frac{1}{2}$		<u>TACOMA CLUB</u> $2\frac{1}{2}$	
Walt Conner	$1\frac{1}{2}$	D. Samsen	$1\frac{1}{2}$
Chas. Joachim	2	Carl Carlson	0
Ellis Ayer	$1\frac{1}{2}$	H. Kuhlman	$1\frac{1}{2}$
R. Pawley	$1\frac{1}{2}$	S. Lockhart	$1\frac{1}{2}$
Ted Davis	2	Ludwig Frank	0

## TEAM STANDINGS

	W	L		W	L
West Seattle	1	0	Seattle Club	0	1
Olympia Club	1	0	Tacoma Club	0	1
Seattle center	1	0	Boeings Club	0	1
Kitsap County	1	0	McNeil Island	0	1

Second round is Sunday, Nov. 10th.

# SEATTLE CLUB

Last month we gave you the Seattle Club rating ladder, numbering 48 players. On the club social ladder are an additional twenty-six names placing the Seattle Chess Club's membership at 74.

Anderson, Arnold, Max Bador, Charles Bick - ford, Fredrickson, Maurice Honion, J. Jackson, S. Jacy, Johnson, R. Kennedy, N. Knud - sen, E. Lohmeyer, Allan McGregor, L. McIsaac O. Moler, Ed Nichols, G.S.G. Patterson, W.H. Raleigh, Rice, Dr. Scoring, Henry Schain, J. L. Sheets, W. Shenaria, Dr. Shephard, Howard Weaver and Walkow.

E. LOHMEYER deserves equal credit along with WILLIAM GILLETTE for work done on the chess club's tables.

## JUNIOR CHESS

JOHN SCHROEDEL will write up the monthly junior chess column for the Letter. There was little to report this month.

There were no answers to the proposed High School Chess League. BOB KUVARA has renewed efforts to get this league underway & has sent invitations to several high schools that reportedly have teams. They are Kent, Centralia, Lincoln of Tacoma, Auburn, Yakima and Wenatchee Jr. If there is no response, there will be no league.

The West Seattle High School club has started the year with a strong push towards better chess promotion. The club has embarked on a campaign to increase its membership, has elected officers, plans a championship tournament, and a club publicity program.

This year's West Seattle Club officers: BUZ EDDY, President; AL BENDER, Vice-President; JUDY SPENCER, Secretary; PHIL MOORMAN, Publicity Director and JOHN SCHROEDEL, Tournament Director.

The club program for the year calls for a strong school entry into all major tournaments and participation "en masse" in West Seattle school chess tournaments.

JOHN SCHROEDEL and PHIL MOORMAN are engaged in a 500 game marathon match. Oct. 15 score was MOORMAN 71, SCHROEDEL 57.

# SPOKANE

The Spokane Chess Club visited Walla Walla Pen and defeated the inmates 11½ to 6½ in a match. BOB KITTREDGE won a very unusual game in this match.

### RAY (White)

1. P-K4 P-K4
2. P-KB4 P-Q3
3. N-KB3 B-N5
4. B-B4 N-KB3
5. PxP PxP
6. BxPch. KxB

### KITTREDGE (Black)

7. NxPch. K-N1
8. NxB NxF
9. O-O B-B4ch.
- 10 K-R1 P-KR4
- 11 Q-B3 PxN
- 12 Q-B7ch. K-R2

13 Q-B5ch. K-N1. After Black's 13th move White said, "I guess this is my only move", and moved 14 QxN. Black was quick to agree as he answered, 14---- RxP ch. and White resigned as Q-R5 Mate can not be avoided.

## TACOMA

The Tacoma Chess Club voted to play in the Puget Sound League as usual. LUDWIG FRANK was appointed team captain for the season. His address is 6162 Community Place, Tacoma 99. Phone JU 8-0971.

## WALLA WALLA

TOM TURNER writes in giving the Walla Walla Chess Club Ladder. Postmarked October 19th.

Ken Hartwig	1618	Bob Oliverti	1016
Lew Hartwig	1352	John Nash	1004
Ed Nightengale	1220	Peter King	998
Keith Lalloston	1200	Neal King	996
Tom Turner	1190	Ken Hartwig Jr,	960
Neil Hunter	1186	Chet Bowerman	838
Bill Krapfel	1128	Britt Bentley	816
John Anderson	1066	J. B. Bentley	768
		Fred Orr	656

## KITSAP

TOURNAMENT STANDINGS		KITSAP CLUB LADDER	
George Rehberg	4-2	Loiningor.....	1832
John Nourse	3-3	Nourse.....	1814
Dr. Almond	3-3	Dr. Almond....	1781
Lt. Loiningor	2-4	Rehberg.....	1764

Send junior chess news and inquiries Schroedel, 6343 50th S.W., Seattle 16, Wn.

# CHESS AROUND THE WORLD

## LOS ANGELES

The Women's Chess Championship of the United States is being played on the Pacific Coast this year for the first time in the history of the event. An invited field of 12 will contest in a round robin.

## VIENNA

A Russian team of grandmasters captured the team championship of Europe in a final round robin with West Germany, Czechoslovakia, and Yugoslavia. The latter gave the Russians their only defeat with a score of 6-4 in the last round, the same score by which the Russians had defeated them in their first round.

## DALLAS

The Dallas International Chess Tournament is definitely set for a double round robin, Nov. 30 to Dec. 16, between eight of the world's leading players. Acceptances have been received from Svetozar Gligoric of Yugoslavia, Bent Larsson of Denmark, Fredrik Olafsson of Iceland, Samuel Reshevsky of the U.S., Gideon Stahlberg of Sweden, Laszlo Szabo of Hungary, and Miguel Najdorf of Argentina. The tournament will be directed by Isaac Kashdan. Prizes are expected to total \$15,000.

## NEW YORK

August E. Rankis of New York City won nine straight games to win the New York State Championship, at Binghamton, N.Y. Second place went to F. Compomanes of the Philippines. Lieutenant R. Cardoso, Philippine junior champion, tied with Dr. Bruno Schmidt for third.

## ANTELOPE VALLEY, CALIF.

The Lancaster Elementary School District, following last year's experiment at the Sage School of Palmdale, will introduce chess instruction as an elective subject in all the sixth, seventh and eighth grades.

## PLYMOUTH, ENGLAND

Dr. Stephen Fazekas of London won the championship of the British Chess Federation, scoring 8-3, ahead of Clark, Penrose, R. Wade, Barden, Cafferty, Alexander.

## SAN FRANCISCO

As a result of an organizational drive, Chess Friends of N. California now has 500 members. Social activities that include wives are playing a large part in gaining popularity for chess.

Sunday brunch at Sheraton-Palace Hotel was attended by 60 of the 116 who played in a two day event divided in A, B, and C Divisions. An additional feature was the Saturday Special, and a Sunday Special for players who could only play one day. The "A" trophy was won by Rob't Brieger of San Diego. Plans are now being made for a dinner-dance affair as part of a big Winter Tournament.



# GAMES

by *Eilmes & Wade*

GAMES FROM THE HOOD:USHERS

HOWARD

1. P-Q4
2. N-KB3
3. P-K3
4. B-Q3
5. O-O
6. P-B3
7. QN-Q2
8. N-K5
9. P-KB4
- 10 N-N4
- 11 NxN ch
- 12 BxB
- 13 N-B3
- 14 N-K5
- 15 P-QR3
- 16 R-B2
- 17 N-N4
- 18 R/2-B2
- 19 R-R2
- 20 P-N4
- 21 BPxNP
- 22 PxB
- 23 RxR
- 24 R-B8 ch !!
- 25 N-R6 ch !

SEGLINS

- N-KB3
- P-K3
- P-N3
- B-N2
- P-QB4
- B-K2
- P-Q4
- O-O
- Q-B2
- B-R3??
- BxN
- NxB
- P-QN4
- QR-N1
- R-N2
- N-N1
- B-K2
- KR-QB1
- P-QR4
- BPxNP?
- Q-Q1
- RxR
- QxRP??
- B-B1?
- Resign

GELL

1. P-K4
2. P-Q4
3. PxB
4. P-QB4
5. P-KB3
6. PxB
7. B-QB4
8. N-K2
9. O-O
- 10 BxN
- 11 B-B4
- 12 Q-N3
- 13 N-Q2
- 14 QR-B1
- 15 Q-B3
- 16 N-QN3
- 17 Q-Q3
- 18 QxN
- 19 RxR
- 20 N-B5
- 21 Q-QB2 ? \*
- 22 K-R1
- 23 P-QN4 ?
- 24 R-Q1
- 25 QxQ
- 26 QxR
- 27 P-KR4
- 28 K-N1
- 29 Resigns

HOWARD

- P-K3
- P-Q4
- PxB
- N-KB3
- B-K2
- NxB
- P-B3
- O-O
- P-QN4
- PxB
- B-N2
- P-QR3
- B-KB3
- N-B3
- R-QB1
- NxB !!
- NxN ch
- R-B5
- QPxB
- R-K1
- B-Q5 ch
- BxN
- BxB
- QxR ch
- R-K8 ch !!
- BxQ
- P-B6
- B-Q7

A short, short from the opening round of Puget Sound League Play.

GERRIT ZWILLERS

1. P-Q4
2. P-QB4
3. N-QB3
4. B-N5
5. P-K3
6. Q-B2
7. N-B3
8. BxB
9. B-Q3
- 10 Q-K2
- 11 PxB
- 12 R-Q1
- 13 N-QR4
- 14 O-O

DAN WADE

- P-Q4
- P-K3
- N-KB3
- B-K2
- QN-Q2
- P-QR3
- PxB
- P-N4
- P-B4
- PxB
- B-N2
- P-N5
- O-O
- Q-R4

\* N-K4 --- , would have held out longer.

Mr. Gell was under time pressure as he went out for breakfast and was a 1/2 hour late. He had to make 40 moves in 1/2 hour.

- 15 P-QN3?? BxN
- 16 Resigns.

Best was 15 BxN, BxB; 16 P-QN3 and Black cannot risk 16----, BxB; because of 17 BxB., KxB; 18 RxB & White has a good game.

This game was strictly filler material.

Mr. Zwecers didn't have to wait long for his revenge.

DAN WADE

GERRIT ZWEERS

- |                   |         |
|-------------------|---------|
| 1. P-K4           | P-K4    |
| 2. N-KB3          | N-QB3   |
| 3. B-N5           | P-QR3   |
| 4. BxN            | NPxB    |
| QPxB is superior. |         |
| 5. P-Q4           | PxP     |
| 6. QxP            | N-B3    |
| 7. P-B4?          | -----   |
| P-K5 looks good.  |         |
| 7. -----          | P-Q4    |
| 8. B-N5           | B-N5ch. |
| 9. QN-Q2          | PxKP    |
| 10 QxQch.         | KxQ     |
| 11 N-K5           | BxNch.  |
| 12 KxB            | B-K3    |
| 13 BxNch.?        | -----   |

In view of the ending, this could be classified as a big mistake. White needed this bishop to hold his endgame together. Incidentally, what ever become of the middle game?

- |             |        |
|-------------|--------|
| 13 -----    | PxB    |
| 14 NxQBPch. | K-Q2   |
| 15 N-R5     | KR-KN1 |
| 16 P-KN3    | R-N4   |
| 17 P-QN4    | P-QB4  |

Throughout the ending, Black finds the best moves.

- |           |          |
|-----------|----------|
| 18 P-QR3  | K-B2     |
| 19 K-K3   | R-QN1    |
| 20 QR-QN1 | R-B4     |
| 21 P-B4   | PxP c.p. |
| 22 P-N4   | R-KN4    |
| 23 P-R3   | P-R4     |
| 24 KxP    | PxPch.   |
| 25 PxP    | BxPch.   |
| 26 K-B4?  | -----    |

K-B2 was the move.

- |           |       |
|-----------|-------|
| 26 -----  | B-K3  |
| 27 PxP??? | ----- |

KR-QB1 would hold out. The text lost immediately.

- |             |     |
|-------------|-----|
| 27 -----    | RxR |
| 28 RxR      | RxP |
| 29 Resigns. |     |

THURSTON COUNTY CHAMPIONSHIP TOURNEY.

CHARLES JOACHIM

WALT CONNER

(Notes by Joachim)

- |            |       |
|------------|-------|
| 1. P-Q4    | P-K3  |
| 2. N-KB3   | P-KB4 |
| 3. P-Q5    | P-Q3  |
| 4. N-N5    | P-K4  |
| 5. P-K4    | N-KB3 |
| 6. B-N5ch. | P-B3  |

- |             |      |
|-------------|------|
| 7. PxQBP    | PxBP |
| 8. B-QB4    | P-Q4 |
| 9. PxP      | PxP  |
| 10 B-QN5ch. | B-Q2 |
| 11 N-K6     | Q-N3 |

Forced. Not 11-----, Q-R4ch.; 12 B-Q2, and if Black played QxB? his Queen would be lost after 13 N-B7ch.

- |           |      |
|-----------|------|
| 12 BxBch. | QNxP |
| 13 NxB    | NxB  |

After Black's 13th, White's premature attack has given Black a very strong center. Also, Black is ahead in development. White intended destruction of Black's center but instead has strengthened it!

- |          |       |
|----------|-------|
| 14 Q-KB3 | P-KB5 |
| 15 N-B3  | R-Q1  |
| 16 O-O   | N-N3  |
| 17 R-Q1  | P-K5  |
| 18 Q-K2  | O-O   |
| 19 Q-N5  | Q-K3  |
| 20 K-R1  | P-B6  |
| 21 PxP   | PxP   |
| 22 B-N5  | Q-R6  |
| 23 Q-B1  | N-N5  |

If 24 QxQ?, NxPch; 25 K-N1, HxQ ch.; 26 K-B1, NxB.

- |            |        |
|------------|--------|
| 24 Q-N1    | QR-K1  |
| 25 R-Q4    | N/3-K4 |
| 26 NxB     | R-B4   |
| 27 N-K7ch. | RxN    |
| 28 BxR     | R-R4   |
| 29 RxN     | NxR    |
| 30 B-Q6    | R-Q4   |
| 31 B-N3    | R-Q7   |
| 32 R-QB1   | Q-R3   |

Black threatens 33-----, RxKBP; 34 BxR, NxBch.; 35 QxN, QxRch.

- |            |        |
|------------|--------|
| 33 Q-K1    | R-K7   |
| 34 Q-Q1    | NxPch. |
| 35 BxN     | RxB    |
| 36 Q-Q8ch. | K-B2   |
| 37 Q-B7ch. | K-B3   |
| 38 Q-B6ch. | K-B2   |
| 39 Q-N7ch. | -----  |

QxQ would lead to a difficult and doubtful endgame.

- |            |       |
|------------|-------|
| 39 -----   | K-B1  |
| 40 Q-N8ch. | K-B2  |
| 41 QxPch.  | K-B1  |
| 42 Q-N8ch. | K-B2  |
| 43 Q-B7ch. | K-B1  |
| 44 R-Q1    | R-Q7  |
| 45 Q-N8ch. | K-B2  |
| 46 Q-N7ch. | K-N1  |
| 47 Q-N3ch. | K-B1  |
| 48 QxPch.  | ----- |

Q-N4ch wins rook immediately but it can be picked up at White's leisure. K-N1; 49 Q-N3ch., K-B1; 50 Q-N4ch wins.

# PUGET SOUND LEAGUE AND TOURNAMENT SCHEDULES

The tournament and Puget Sound League schedules are a little late but better late than never!

1957 WASHINGTON WOODPUSHERS Sunday, OCTOBER 13th. At Seattle Chess Club, room is 604. Starts at 9 a.m. Four round Swiss. 40 moves per hour. Masters and experts in current N. W. Rating List (this issue) are excluded. Class A, B, etc. welcome. Bring clocks if possible.

SUNDAY, OCTOBER 27th is the opening day of the Puget Sound League competition.

Tacoma at Olympia, Kitsap at McNeil, Boeings at Seattle Chess Center, and W. Seattle Chess Club at Seattle Chess Club.

SUNDAY, NOVEMBER 10th. Olympia vs. Boeing Club at Seattle Chess Club, Seattle Chess Club at Kitsap, Seattle Chess Center goes to Tacoma, West Seattle at McNeil.

SATURDAY and SUNDAY NOVEMBER 23-24. OREGON OPEN in Portland. Details in this issue.

SUNDAY, DECEMBER 1st. Boeings vs. Seattle Chess Club at the Seattle Club, West Seattle at Seattle Chess Center, Tacoma at Kitsap, and Olympia at McNeil.

SUNDAY, DECEMBER 15th. Kitsap vs. W. Seattle at Seattle Chess Club, Seattle Chess Club at McNeil, Seattle Chess Center at Olympia, and Boeings at Tacoma.

SUNDAY, JANUARY 5th. Seattle Chess Center at McNeil, Tacoma at Seattle Chess Club, West Seattle at Olympia, and Boeings Club visits Kitsap.

WASHINGTON OPEN, JANUARY 18th and 19th. Details will appear in November and December issues of this magazine.

FEBRUARY 2nd (Sunday) Olympia at Kitsap, Tacoma at McNeil, Boeings vs. West Seattle at Seattle Chess Club, and Seattle Club at Seattle Chess Center.

SATURDAY and SUNDAY, FEBRUARY 8th and 9th, WASHINGTON STATE CHAMPIONSHIP INVITATIONAL ROUND-ROBIN. (Details will be released at a later date.)

SUNDAY, FEBRUARY 23rd. West Seattle at Tacoma, Boeings at McNeil, Seattle Club at Olympia, and Kitsap at Seattle Chess Center.

SATURDAY and SUNDAY, MARCH 22nd and 23. PUGET SOUND OPEN. Details will appear later.

SATURDAY and SUNDAY, APRIL 19th and 20. WASHINGTON STATE JUNIOR for players under 21 years of age. Details later.

## PUGET SOUND LEAGUE RULES

1. Five players constitute a team but a substitute may play the second game on fifth board.

2. Each player will play his opponent 2 games, once with each color.

3. The highest ranking player will play first board, the second ranking player second board, etc.

4. Fifth board will be forfeited if a team is one player short. If short two players, fourth and fifth boards are to be forfeited, etc.

5. Match results and not the margin of victory will decide each team's place. A  $5\frac{1}{2}-4\frac{1}{2}$  win will count as much as a 10 to 0 win.

6. In case of a tie for first at the end of the season, a playoff match will be held SUNDAY, MARCH 9th. The site will be the opposite of the site of the regular season match between the teams.

7. Time control is 40 moves per hour.

8. All matches, except those at McNeil, will start at one p. m.

9. All players on a team will play with their team mates at the same time & location. No lone wolf encounters before or after the match can count in the final match result. An entire team can advance or postpone the date of a match, but not for more than one week.

Seattle Club, Boeings & West Seattle are in home matches at the clubroom 604 in Y MCA. Seattle Chess Center is at 718 Pine St. Tacoma is at home in Oakland Park fieldhouse. Olympia hosts at Community Center in that city. Write C. JOACHIM at Olympian Hotel. Kitsap is at Bremerton Y. Catch boat to McNeil at 11 a.m.



# A TRANSLATION FROM THE RUSSIAN BY ROBERT A. KARCH

As part of his military training program, SFC Robert Karch is studying the Russian language, and has found a practical use for it by reading chess magazines and translating such theoretical studies as the following which was written by L. Shamkovich in the May, 1957, issue of "Chess in the USSR".

## RUY LOPEZ - Marshall Attack

In a sharp variation of the Ruy Lopez, after the moves: 1. P-K4, P-K4; 2. N-KB3, N-QB3; 3. B-N5, P-QR3; 4. B-R4, N-B3; 5. O-O, B-K2; 6. R-K, P-QN4; 7. B-N3, O-O; 8. P-B3, P-Q4 (Black sacs a Pawn for the initiative) 9. PxP, NxP; 10. NxP, NxN; 11. RxN, ---a position arises in which Black may choose between two continuations: the classical 11...N-B3, or the more contemporary 11...P-QB3.

The first of these is considered almost refuted, but the variations confirming this belief seem to be taken out of one opening book or another. In this article we will examine new continuations, with several variations connected with the move 11...N-B3. Black is threatening violent offensive action by means of ...B-Q3, ...N-N5, and ...Q-R5. See the diagram.

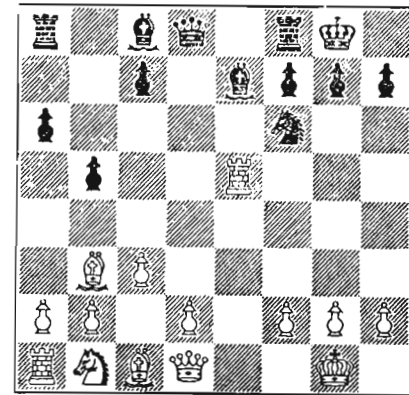
White has several possibilities:

(1) 12. P-KR3

Capablanca played this in a well-known game with Marshall in 1918. The game continued 12...B-Q3; 13. R-K, N-N5! Capablanca avoided 14. PxN assuming that Q-R5; 15. Q-B3, Q-R7ch; 16. K-B, BxP; 17. QxB, Q-R8ch; 18. K-K2, QR-Kch would win.

This analysis was accepted on faith by the entire chess world, and it was not until 1954 that there was doubt on his accuracy. The Leningrad chessplayer, E. Palkin, had an improvement: 19. B-K6! after which White wins. As a result of this, Palkin came to the conclusion that 13...N-N5 was incorrect.

However, in the play of the IV USSR Correspondence Semi-finals, the game Fink-Cantorovich, Black played 15 ...B-R7ch instead of 15...Q-R7ch, and after 16. K-B, BxP; 17. Q-K4, K-R; 18. P-Q4, Q-R4; 19. B-Q5, P-KB4; 20. Q-Q3, B-B5 and won with



AFTER 11...N-B3 (SEE TEXT)

direct attack. But, instead of 19. B-Q5, White should have continued: 19. N-Q2. For example, if .... 19. ...P-KB4; 20. Q-B6, B-B5; 21. N-B3, Q-R8ch; 22. K-K2, QR-Kch; 23. B-K6, and White maintains material advantage.

Of greater importance, though, Black gets an apparently irresistible attack with 17...B-B5. If 18. P-N3, Q-R7 threatens ...B-R6ch and ..QR-K. How is White to continue? If 19. BxPch, then KxB;; 20. QxBch, K-N; and White is forced to lose a piece. An alternative 19. R-K3, is met by ...QR-K; 20. Q-Q5, BxP; 21. RxB (if 21. QxPch, K-R;), B-K7ch; 22. K-K, B-B6 disc. ch., and mate follows shortly. To the same end leads 21. PxB, B-R6ch; 22. K-K, Q-N8ch.

Thus is drawn the same conclusion, that Capablanca correctly declined the sacrifice of the Knight.

\*\*\*\*\*

Part II, dealing with 12. P-Q4, is in process of being translated by Karch. It seems that the Russians like to drag out even such venerable and hallowed traditions as the Ruy Lopez for another skeptical look-see. Does anybody want some more?

POSTAL CHESS GAMES ANNOTATED

by  
OLAF ULVESTAD

These games annotated by Olaf Ulvestad are really lessons in chess and if carefully studied, should be a help in improving your game. We intend to make this a regular feature of the Washington Chess Letter. Any comments about Ulvestad's analysis will be welcomed and questions will be answered in these columns. In fact we want comments, as a lack of them will indicate a lack of interest in this feature and lead to its discontinuance.

The names of players will not be shown, just the postal chess section number, as our purpose is only to give such information as will aid everyone to improve his game.

Section 56B-11B

1. P-Q4 P-Q4
  2. P-QB4 P-QB3
  3. N-KB3 N-KB3
  4. N-B3 PxP
  5. P-QR4 B-N5
- B-B4 or P-K3 is correct here for Black
6. N-K5 B-K3
- Awkward post for this B B-R4 is better
7. P-K4 QN-Q2
  8. NxE7 BxN
- White here has the option of N or BxBP. He played properly as 9.BxB is stronger than NxB.
9. BxB P-K4
- Black's move gives white's forces too much scope. Better would be P-K3
10. O-O B-N5
  11. B-N5 PxP
  12. QxP BxN
  13. PxB Q-K2
  14. BxN PxB
- White's move is a strong capture, but P-K5 would have won a piece, E.G.
14. POK5, P-QB4, 15Q-B4, N-R4, 16. Q-R4, P-B3, 17. QxNP ch, 18 QxN ch and the piece is won.
  15. P-KB4 P-QB4
- Q-B4, trading Q's offered good fighting chances.
16. Q-Q3 O-O-O
  17. Q-B3 N-N3
  18. B-Q5 NxB
  19. PxN Q-Q2
- Black, P-B5 would have given Black some play.
20. P-QB4 Q-B4
  21. P-QR5 Q-B7

- Black's better move (21) and one that is absolutely necessary is P-QR3. Blacks following P capture loses further valuable time.
22. P-QR6 QxP
  23. PxNP ch KxP
  24. P-Q6 ch K-B1
- White finishes neatly and quickly
25. Q-B6 resign.

Section 57B-4A

1. P-K4 P-QB4
  2. N-KB3 N-QB3
  3. P-QB4 P-K4
- White is playing for the well known "Maroczy Bind" Black's move is strong enough. Botvinnik has continued 3. --P-KN3
4. P-Q4 PxP
  5. NxP, B-N2. The bind on Black's center is thus allowed; but it has lost most of its terror in recent years.
  4. P-Q3 P-Q3
- The flank development of Black's KB is good. Also strong here is P-KB4, a natural "Treezing" move.
5. N-QB3 P-KN3
  6. N-Q5 P-KR3
- Directed against White's B-KN5 which could disorganize the general Black formation.
7. P-KR3 B-N2
  8. B-Q2 KN-K2
  9. P-QN4 P-QR3
- A fine positional thrust by White to open the Q's wing. Black's move is a slight positional weakening.

10. P-QR4 NxN
- White misses out on his follow-through. Correct here is PxP followed by R-QN1
11. P(K4)xN P-K5
- This permits the unmasking attack by White on the long diagonal.
12. P(Q3)xP NxNP
- Black must play accurately E.G. 12.--BxR
13. QxB, N-K4, 14. NxN PxN, 15 QxP ch followed by PxP would have given white a decisive advantage.
  13. P-K5 PxP
  14. B-B3 O-O
  15. B-Q3 NxB
  16. QxN P-K5
- Here we go again, this time with a P fork backed by a pin added.
17. Q-B2 BxB
- Sharper here is 17.--PxN
18. BxB, R-K1 ch. Black wins a piece either way.
  18. QxB PxN
  19. QxP R-K1 ch
  20. K-B1 Q-K2
- Somewhat more incisive is
21. ---B-B4 threatening B-K5.
  21. P-N3 Q-K5
  22. QxQ RxQ
  23. R-K1 RxP
  24. R-K8 K-N2
  25. K-N2 BxRP ch
- Ouch! This crushing unmasking winds things up fast.
26. KxB RxR
  27. R-Q1 R-Q5
  28. Resign.

# POSTAL CHESS



R. MERK  
Points

				Points				Points					
9/28	57B-1A	Bowerman	1	Gordon	0	56	10/5	57A-2B	Mage	1	Bever	0	54
	57B-1B	Bowerman	1	Gordon	0	56	10/7	57B-2B	Scripps	1	Mills	0	70
	57B-1A	Bennett	1	Gordon	0	65	10/10	57B-3A	Smith	1	VanNatta	0	92
		Spatz	1	Gordon	0	20	10/17	56A-2A	Weever	1	Dickson	0	34
		Bemis	1	Gordon	0	70	10/18	57B-4A	Eilmes	1	Finlay	0	54
	57B-1B	Bennett	1	Gordon	0	65		54B-4A	Roberts, D.	1	Raleigh	0	27
		Spatz	1	Gordon	0	20		56B-10A	Merk	1	Lyberger	0	32
		Bemis	1	Gordon	0	70	10/21	55CH-B	Wade	$\frac{1}{2}$	Mage	$\frac{1}{2}$	14
9/30	57B-6A	Kuvara	1	Frenett	0	50	10/23	57A-3A	Phillips	1	Bever	0	56
	57B-6B	Kuvara	1	Frenett	0	50		57A-3B	Phillips	1	Carter	0	48
	57B-6A	Mills	1	Frenett	0	14	10/26	55CH-A	Weisscher	1	Mage	0	34
		Hall	1	Frenett	0	55		Weischer	1	Skarsten	0	25	
		Gemar	1	Frenett	0	34	10/27	56A-6B	Cairncross	1	Howard	0	66
	57B-6B	Mills	1	Frenett	0	14	10/28	57A-3A	Carter	1	Husby	0	64
		Hall	1	Frenett	0	55		57A-1A	Carter	1	Edberg	0	64
		Gemar	1	Frenett	0	34		57A-1B	Carter	1	Edberg	0	64
10/3	57A-3B	Weaver	1	Bever	0	40	10/30	56A-6B	Woodward	1	Howard	0	26
10/5	56A-4B	Weaver	1	Kaiffenberger	0	34	10/31	56B-10B	Lyberger	1	Laine	0	78
	57A-2A	Mage	1	Bever	0	54		56B-5A	Tresidder	1	Gordon	0	58

## Sections Completed

	54B-4A	54B-4B	Pts		56B-5A	56B-5B	Points
Roberts, D.	x 0 1 1 1	x 1 1 1 1	7	Phillips	x 0 0 1 1	x 1 1 1 1	6 273
Youngman	1 x 1 0 1	0 x 1 0 1	5	Van Natta	1 x $\frac{1}{2}$ 1 1	0 x $\frac{1}{2}$ 1 1	6 304
Raleigh	0 0 x 1 1	0 0 x 1 1	4	Gordon	1 $\frac{1}{2}$ x 0 1	0 $\frac{1}{2}$ x 1 1	5
Falk	0 1 0 x 1	0 1 0 x 1	4	Tresidder	0 0 1 x 1	0 0 0 x 1	3
Dauidsen	0 0 0 0 x	0 0 0 0 x	0	Smith	0 0 0 0 x	0 0 0 0 x	0

In section 54B-4A Don Roberts wins top honors and with them goes a six month extension to his membership in the Washington Chess Federation.

In section 56B-5A there is a tie for first place on the number of games won. In order to break the tie we award first place on the basis of points won on our rating ladder in these games and the honors go Van Natta on this basis.

	57B-2A	57B-2B	Points	
Mills	x 1 0 1 1	x 1 0 1 1	6 220	In this section there is a three way tie for first place on the basis of games won and in order to break it the points won on our postal rating ladder in these games is used. This gives the honors to Scripps.
Laine	0 x 1 1 1	0 x 1 1 1	6 166	
Scripps	1 0 x 1 1	1 0 x 1 1	6 310	
Miller	0 0 0 x 1	0 0 0 x 1	2	
James	0 0 0 0 x	0 0 0 0 x	0	

Our last issue reported Laine 1 Scripps 0 in section 57B-2B in error. Actually the game was not completed until Oct. 23.

The rating ladder last month gave Coubrough top billing with 1814 points. This was in error. His points should have been shown as 1755. Mage listed with 1453 points should have been 1513.

Again we want to remind you to send in the record of your games when reporting a win. We cannot promise to use all of the games submitted but will endeavor to pick out the best ones for annotation by Olaf Ulvestad.

As reported in our August 1957 issue, Ulvestad and Edberg have opened a Chess center at 718 Pine Street in Seattle and anyone wanting lessons in chess by a Chess Master can get them at this Seattle Chess Center.

POSTAL CHESS RATINGS

**A good way to improve your chess skill - is to PLAY BY MAIL**

**YOU HAVE AMPLE TIME TO REFER TO BOOKS ON THE OPENINGS, TO REFER TO SIMILAR SITUATIONS IN PUBLISHED GAMES, AND TO TRY VARIOUS MOVES ON THE BOARD. THE RESULT IS ADDED FINESSE THAT IS IMPRESSED IN YOUR MEMORY.**

**The entry fee is 50¢. Rules are sent, and PRIZES!**

SEND ENTRY TO R.R.MERK 1026 E. 71, SEATTLE 15,

"A" Division

Weisscher	1852
Weaver	1816
Parsons	1783
Coubrough	1755
Wade	1755
Woodward	1636
Mage	1601
Kaffenberger	1558
Spatz	1549
Edberg, R.	1534
Carter	1516
Phillips	1503
Skersten	1503
Dickson	1491
Knepp	1473
Luters	1472
Husby	1456
Merk	1428
Van Natta	1410
Bever	1395
Laine	1386
Mills	1359
Howard	1340
Cairncross	1334

"B" Division

Roberts, Don	1338
Gemar	1284
Scripps	1280
Lyberger	1262
Benson	1258
McDonald	1252
Bowerman	1239
Haynes	1238
Edberg, A.	1220
Rogers	1210
Hamilton	1205
Smith	1169
Bennett	1166
Tresidder	1162
Eilmes	1154
Youngman	1152
Kuvara	1150
Nicnols	1149
Lee	1140
Spencer	1133
Bemis	1127
Hell	1110
Finlay	1088
Watson	1060
Releigh	1059
Abrahamson	1050
Benoit	1050
Cooper	1050
Devenere	1050
Fredstrom	1050
Guevara	1050
Litka	1050
Fifley	1050
Schroedel	1050
Sawyer	1050
Pierce	1039
Waldron	1022
Aldridge	1010
Bluss	1000
Skoglund	981
Roberts, H.H.	961
Miller	946
Gordon	823
Adamson	781
Franett	744

Return postage guaranteed  
Form 3547 requested.

WASHINGTON CHESS LETTER  
1026 E. 71st ST. SEATTLE, 15, WASH.

B. B. Strachan  
5103 N.E. 15 Ave  
Portland 11, Ore.  
4/58

SEATTLE

WASH. (112)

