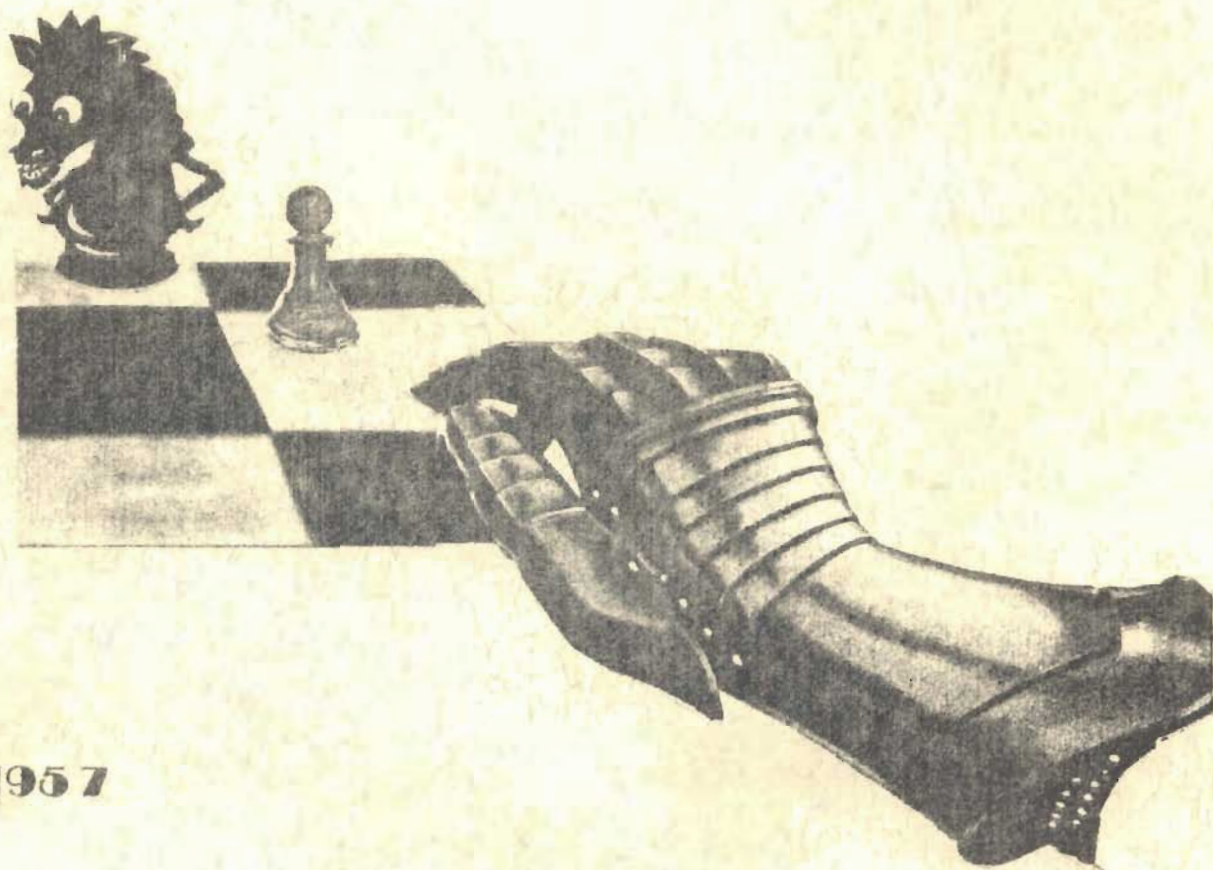


WASHINGTON

# CHESS

LETTER



JUNE 1957

**CHESS LETTER**  
 OFFICIAL PUBLICATION OF THE  
**WASHINGTON CHESS FEDERATION**

115th ISSUE

Editor D. E. Wade  
 11023 25th N. E. Seattle, Wash.

Circulation R. R. Merk  
 1026 E. 71st. Seattle, Wash.

Publisher F. H. Weaver  
 501 Olympic Place Seattle, Wash.

June contributors - George Bishop, Don Eilmes, Dr. Griffith Parker, Vic Pupols

OTHER W. C. F. OFFICERS

President Dr. Griffith H. Parker  
 416 Hyde Bldg. Spokane, Wash.

Vice-President Max Mage  
 2437 55th S. W. Seattle, Wash.

Secretary Peder Husby  
 Route One E. Stanwood, Wash.

Treasurer W. H. Raleigh  
 4312 Woodland Park Ave. Seattle, Wash.

Publicity Director Don Eilmes  
 1303 44th Ave. S. W. Seattle, Wash.

Tournament Director Robert Edberg  
 Route One Tieton, Wash.

Tournament Director Tom Makens  
 Knickerbocker Hotel Seattle, Wash.

AFFILIATED W. C. F. CHESS CLUBS

Seattle, Spokane, Tacoma, West Seattle, McNeil, Kitsap, Tri-Cities, Boeings, and Olympia.

BOOK REVIEW

PICTURE GUIDE TO BEGINNER'S CHESS-put it on your book shelf. \$2.95. HARVEYHOUSE Irvington-on-Hudson, New York. This book by Al Horowitz makes learning how to be a chess player easy. Photographs make everything crystal clear, leaving absolutely no question unanswered in a learner's mind.

We attempted to get the Letter out earlier than usual this month and complications set in! SGT. KARCH wishes to tone down his letter on page 8. He says since the USCF intends to put out quarterly supplements on their ratings, much of his criticism may soon be obsolete.

OLAF ULVESTAD, unknown to the editor, annotated the Pupols-Patterson & the Eilmes-Hoge games from the Inland Empire Open. Since we have used the Pupols-Patterson game in this issue, we have a dilemma on our hands. We will use the Hoge-Eilmes game next issue plus others.

SGT. KARCH writes that HUGH NOLAND'S rating was based on the Puget Sound Open in Feb. 1956 in which he earned 1976 but it dropped a lot in the Seattle Club Championship Tournament played last year. USCF ratings show Noland way up there, but after this year's Puget Sound Open it will tumble a bit and the WCF and US ratings on Noland will be a little closer.

VIKTORS PUPOLS is writing a series, "How To Draw A Game". Lack of space kept it out of this issue. We will start it next month.

The annual SEATTLE SEAFAIR OPEN tournament will be played on Saturday and Sunday, August 3rd and 4th. Details on page 12 of this issue. Also the date of annual British Columbia - Washington Match should be available by next issue. The site this time will be on the border at the Arch of Peace. The last time we played up there they gave us a bad trouncing. We have to have 45 players for this event or we forfeit the difference between the number we do have and 45. If we can't make the minimum of 45, we may have to lower our standards for future Internationals - a distinct step backward.

BRUCE OLIDHAM sent in the following item: Reed College defeated the Portland C.C. 2½ to 1½ in a match. Reed College's number one player is IVARS DALBERGS, who won a recent Puget Sound Open.

REED COLLEGE	2½	PORTLAND CLUB	1½
Ivars Dalberg	1	E. G. Short	0
O'Neill	1	Burnham	0
Walker	½	Meador	½
Tomlinson	0	MacKenzie	1

# PUPOLS WINS INLAND EMPIRE

## DON EILMES ALSO SCORES 5-1, TO PLACE SECOND

By Dr. Griffith Parker

VICTORS PUPOLS came from behind to win his last round game with JIM MCCORMICK and successfully defend his title as Inland Empire Open champion with a 5-1 score winning four and drawing two. Pupols won over G.S. G. PATTERSON, BELDON PEARSON, OLAF ULVESTAD and MCCORMICK. He drew with CHARLES GRIFFITHS and OLIVER SCOTT MORRIS. All of these opponents, with the exception of Beldon, are strong Seattleites so Vic received no help through the pairings.

DON EILMES surprised everyone, most of all himself, by also chalking up a 5-1 total and placed second on Median points. As is always possible in a large Swiss tournament, Don came up the back way meeting only ROBERT EDBERG of the top rated eight in the tourney. His loss to Edberg was his only setback.

While the 32 entries failed to come up to the record 40 of last year and the hoped for 50, they did establish a new tops for an Inland Empire Open as far as the strength of the contestants was concerned. Old standbys were agreed that this undoubtedly was the most power-laden competition ever held in these parts.

In addition to the usual strong players such as PUPOLS, WADE, MCCORMICK ( Long Island, New York Champ ), EDBERG ( Washington State and two time Montana winner ) DR. BAUMWELL, CORNELIUS, MAKENS, GRIFFITHS and others, we had OLAF ULVESTAD and G.S.G. PATTERSON competing. Olaf, of course, played on the U. S. team against Russia scoring a win and a loss against DAVID BRONSTEIN and Patterson has always been considered one of the strongest players on the West coast.

Seattle did itself proud by sending 12 entries to the meet (including Pupols whose home is in Tacoma but he is presently going to the U. of Washington and is a very active member of the Seattle Chess Club) while Spokane hung its head in shame when it only could muster the same number. We will try to do better next year.

The Coons System of pairings was used.

This system divided the players into four groups of comparable strength. The players in the same group were paired for the first round thus pitting the toppers against each other.

The second round paired players in the first group with those in the second, the third with the fourth. The next, 3rd round found the first against the third & the second against the fourth. Groupings were ignored after all groups had met.

That epic first round found Pupols, a winner over Patterson and Baumwell defeating Edberg. McCormick drew with Wade. Ulvestad had a rook advantage over Cornelius but his extra piece was out of play and Gordon had a vicious attack. Ulvestad finally weathered the storm and got a rook back into action for an ultimate win.

Surprises in the second round found Dr. Baumwell falling before TERRY NELSON and Ulvestad drawing TOM MAKENS.

Some of the top boys still had a lot of trouble in the third round with Pupols having to settle for a draw with CHARLES GRIFFITHS and Cornelius could do no better against DON DANIELS.

The fourth session found some of the top scores battling. Pupols won a hard fought game from Ulvestad, McCormick pushed over Griffiths and Wade had no trouble with PAUL BEZEMER. Patterson toyed with ROBERT HIGGINSON while Baumwell dumped T. Makens.

At this stage TERRY NELSON took over the lead with a win from ROBERT KITTRIDGE and a perfect 4-0 score.

The draw paired Nelson with McCormick for the fifth round and Jim took the lead with a  $4\frac{1}{2}-\frac{1}{2}$  score when Pupols had to settle for a draw with OLIVER MORRIS. Also both Wade and Dr. Baumwell hold each other back by drawing their game. Eilmes quietly moved up to a 4-1 score with his win over WILLIAM HOGE.

The last session found McCormick playing Pupols with Jim needing only a draw to take it all. Viktor's doubled rooks on the queen file finally gave him the edge and he went on to win. Eilmes won a hard-fought, interesting game from Nelson to reach up to the heights. Wade and Patterson drew keeping both a half point behind the leaders.

DR. MAX BAUMWELL took the Eastern Washington title with his  $4\frac{1}{2}$  total as no other Eastern player had better than 4.

Special mention should be made of MIKE CONWAY, a Spokane 14 year old, who made a 2-3 score in the recent junior tourney but was able to take home  $3\frac{1}{2}$  points in a talent loaded field. Since he was the youngest one in the tourney and had played all of his games (even though blossoming with measles on Sunday) he was given a \$5 prize donated by genial GEORGE BISHOP, the State Open winner. This award was kept secret until after the tourney at Bishop's request.

Prize winners in the second division were GORDON CORNELIUS, HORTON THOMPSON (the

old reliable and permanent fixture of this tournament), ROBERT EDBERG, JOHN GELL and WILLIAM BAILEY.

Aside from KENNETH WARREN'S defalcation after the first round, there was only one forfeited game. HERBERT ANDERSON had to catch a bus to Missoula and forfeited his last game to TOM MAKENS.

The tournament director wishes to apologize for the lateness of play Saturday night. Originally, two rounds were scheduled for the afternoon and one for the evening. With a little late start, and the top players meeting each other, it was decided to have only one game in the afternoon and two in the evening.

A schedule set up by the hotel for a banquet seemed to allow plenty of time for eating, the entertainment and two rounds of games. Unfortunately, the hotel wasn't able to keep the schedule and the banquet was a good half hour late and as a consequence play went on into the wee hours of the morning.

PLACE	PLAYER'S NAME	RESIDENCE	-1-	-2-	-3-	-4-	-5-	-6-	W L D	SCORE	MED.	SOL.
1.	Viktors Pupols	Seattle	W5	W15	D9	W7	D13	W3	4-0-2	5 -1	16.5	
2.	Donald Eilmes	Seattle	W16	W20	L19	W27	W26	W8	5-1-0	5 -1	10.0	
3.	Jim McCormick	Seattle	D4	W25	W10	W9	W8	L1	4-1-1	$4\frac{1}{2}$ - $1\frac{1}{2}$	16.5	
4.	Daniel E. Wade	Seattle	D3	W26	W18	W28	D6	D5	3-0-3	$4\frac{1}{2}$ - $1\frac{1}{2}$	14.0	
5.	G.S.G. Patterson	Seattle	L1	W22	W21	W25	W12	D4	4-1-1	$4\frac{1}{2}$ - $1\frac{1}{2}$	13.0	
6.	Dr. Max Baumwell	W. Walla	W19	L8	W24	W12	D4	W17	4-1-1	$4\frac{1}{2}$ - $1\frac{1}{2}$	12.5	
7.	Olaf Ulvestad	Seattle	W17	D12	W13	L1	W20	W19	4-1-1	$4\frac{1}{2}$ - $1\frac{1}{2}$	12.0	
8.	Terry Nelson	Yakima	W22	W6	W29	W11	L3	L2	4-2-0	4 -2	16.0	
9.	Charles Griffiths	Seattle	W18	W14	D1	L3	D19	W13	4-2-0	4 -2	14.0	
10.	Dr. Griffith Parker	Spokane	W21	L27	L3	W29	W23	W16	4-2-0	4 -2	9.5	15.0
11.	Robert Kittredge	Spokane	L15	W19	W30	L8	W24	W20	4-2-0	4 -2	9.5	14.0
12.	Tom Makens	Seattle	W25	D7	W27	L6	L5	W22F	3-2-1	$3\frac{1}{2}$ - $2\frac{1}{2}$	14.0	
13.	Oliver Morris	Seattle	W24	W31	L7	W15	D1	L9	3-2-1	$3\frac{1}{2}$ - $2\frac{1}{2}$	13.5	
14.	Mike Conway	Spokane	D23	L9	L15	W30	W28	W29	3-2-1	$3\frac{1}{2}$ - $2\frac{1}{2}$	8.0	
15.	Beldon Pearson	Dayton	W11	L1	W14	L13	L16	W31	3-3-0	3 -3	14.0	
16.	Donald Daniels	Spokane	L2	W29	D17	D21	W15	L10	2-2-2	3 -3	12.5	
17.	Gordon Cornelius	Spokane	L7	W28	D16	D24	W21	L6	2-2-2	3 -3	12.0	
18.	Horton Thompson	Kendrick	L9	W23	L4	L26	W32F	W25	3-3-0	3 -3	11.0	
19.	Robert Edberg	Tieton	L6	L11	W2	W31	D9	L7	2-3-1	$2\frac{1}{2}$ - $3\frac{1}{2}$	17.0	
20.	John Gell	Seattle	W29	L2	W26	D22	L7	L11	2-3-1	$2\frac{1}{2}$ - $3\frac{1}{2}$	13.5	
21.	William Bailey	Spokane	L10	W30	L5	D16	L17	W26	2-3-1	$2\frac{1}{2}$ - $3\frac{1}{2}$	12.0	
22.	Herbert Anderson	Missoula	L8	L5	W23	D20	W27	L12F	2-3-1	$2\frac{1}{2}$ - $3\frac{1}{2}$	11.5	18.0
23.	Jack Kelly	Spokane	D14	L18	L22	W32F	L10	W27	2-3-1	$2\frac{1}{2}$ - $3\frac{1}{2}$	11.5	17.5
24.	Ralph Hanson	Missoula	L13	W32F	L6	D17	L11	D28	1-3-2	2 -4	13.0	
25.	Robert Higginson	Spokane	L12	L3	W32F	L5	W31	L18	2-4-0	2 -4	12.5	
26.	William Hoge	Yakima	W28	L4	L20	W18	L2	L21	2-4-0	2 -4	12.0	18.5
27.	John Hartman	Spokane	W30	W10	L12	L2	L22	L23	2-4-0	2 -4	12.0	17.5
28.	Paul Bezomer	Metaling	L26	L17	W31	L4	L14	D24	1-4-1	$1\frac{1}{2}$ - $4\frac{1}{2}$	10.5	
29.	John Schroedel	Seattle	L20	L16	L8	L10	W30	L14	1-5-0	1 -5	13.0	
30.	Vito Devenere	Spokane	L27	L21	L11	L14	L29	W32F	1-5-0	1 -5	10.5	
31.	Heinz Schneider	Spokane	W32	L13	L28	L19	L25	L15	1-5-0	1 -5	9.5	
32.	Kenneth Warren	Spokane	L31	L24F	L25F	L23F	L18F	L30F	0-6-0	0 -6	7.5	



CANDID COMMENTS BY WADE

Pupols played splendid chess, but it was only through luck of the draw that he was able to keep the I.E.O. title. Only a Pupol's jinx could have stopped McCormick in the last round as Jim needed only a draw to pick up all the marbles (including \$25!). Eligible to play McCormick in the final round were G.S.G. Patterson and Eilmes. Strangely enough the only bad game Vik Pupols played was his handling of the endgame in his struggle with Ulvestad. Pupols had a cinch win but he blew it. Ulvestad needed only one more check to draw, failed to get it, and Pupols won. Who would have thought Saturday night, (technically it was Sunday morning) it would be Pupols as the eventual winner.

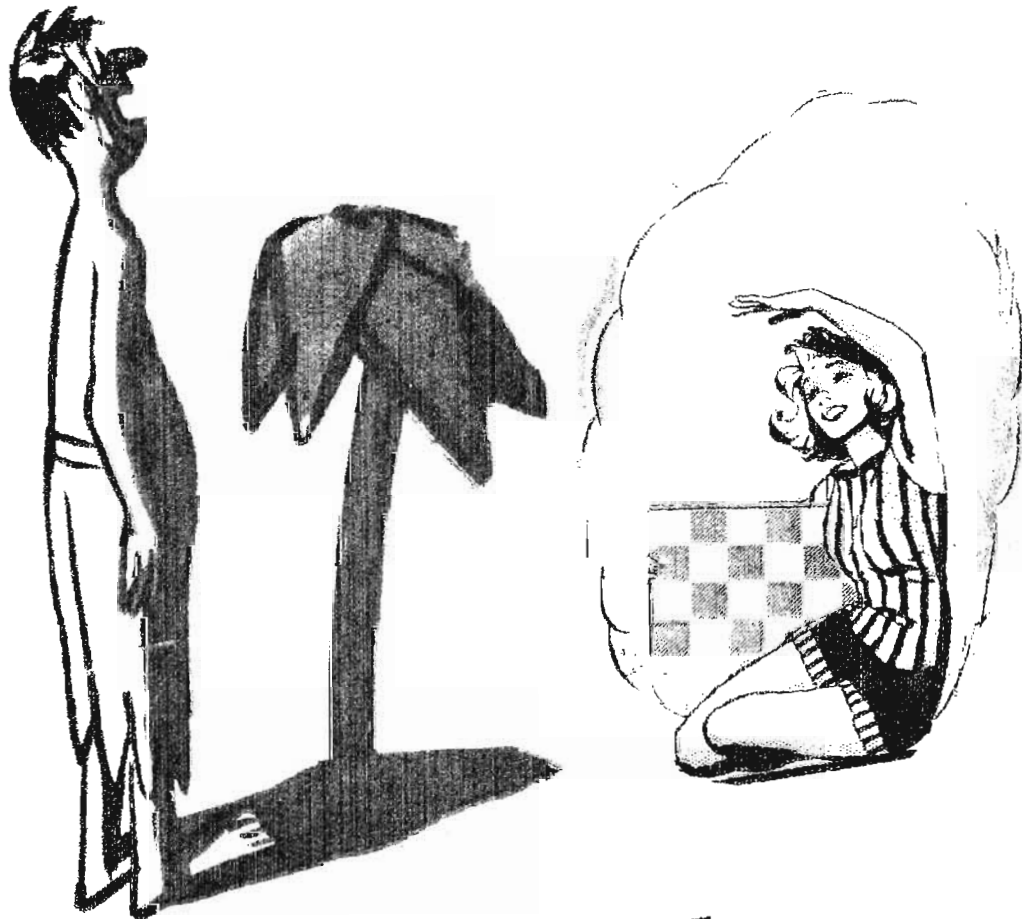
Most brilliant ending in the tournament was Dr. Parker's book-like sacrifice of a queen to Bailey. The most brilliant overall game could either be Pupol's win over McCormick, or his win over Patterson, or possibly it was

the Kittredge onslaught against Edberg. Was a win somewhere in that one for you, Edberg? Dr. Baumwell's smashing attack against Edberg was also well played.

Don Eilmes thought his win over Nelson was his best, only to discover later that the rook sacrifice that won was unsound and Nelson could have taken the rook for a drawn game! After he placed quite low in last year's I.E.O. Don Eilmes was chided by the writer, that now that he was a Seattleite instead of a Spokane player, he should play like a Seattleite and place higher in the standings. It looks like he took the advice seriously!

We took a dim view of second-half prize money being greater than some of the top prize money. It is un-American for 17th place to receive more than 4th. And shame on Cornelius and Edberg! The second-half money is for poor duffers who aren't rated a chance to win.

Pupols and Wade were the only play-

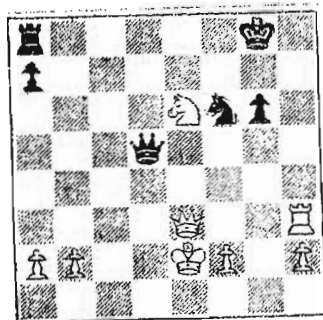


**"MY WISH CAME TRUE! --  
A CHESS PLAYER!"**

# 5-MINUTE TEST

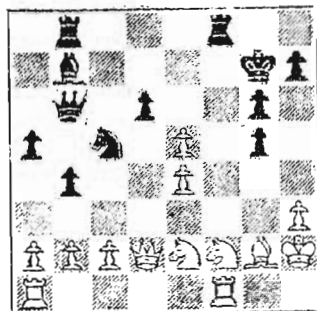
ALLOW YOURSELF 5 MINUTES TO GET AS FAR AS YOU CAN

It might not require an expert to solve the "expert" positions, but it surely will take one to get to them. Select one best move, for each, in sequence



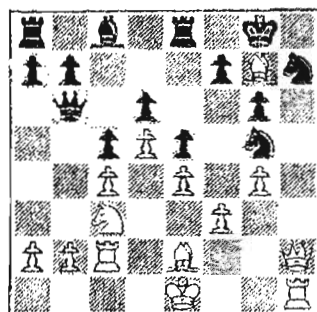
WHITE TO MOVE

CLASS B



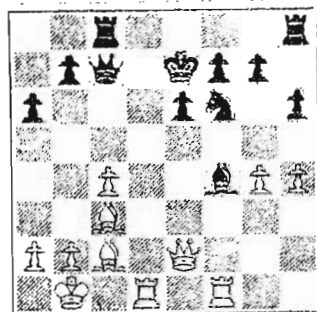
BLACK TO MOVE

CLASS A



WHITE TO MOVE

EXPERT, Jr.



WHITE TO MOVE

EXPERT, Sr.

Solutions on p.

16

ors who escaped a beating but Eilmes can ask, who else won five games?

Adjournments and the Coons System played holy hob with the pairings. The Swiss System must have good pairings if the final standing of the players is to have meaning. Even when they are paired against each other could not kill off the Seattle contenders as their taking the top five places will testify.

Adjudication is very unpopular but seems to be a necessary evil. Who was supposed to adjudicate the Pupols-Ulvestad game? Neither player had his peer at the tournament!

Robert Higginson, through a combination of the Coon's System and adjourned games, had to play some awfully strong players for a man with a minus score. Makens, McCormick & Patterson were not only too strong for the Spokane champ but too strong for most of the other players as well.

John Hartman's upset win over Dr. Parker was too much for the lad. He lost his remaining four games.

Bob Edberg is certainly a good loser. He was his usual smiling self throughout and he hasn't had much experience at losing either.

Although Kittredge played a fine game in his tussle with Edberg, he came apart at the seams against Beldon Pearson after starting a passed rook pawn ahead and looking like a winner. On the other hand, Pearson was soundly trounced in his wild match with Oliver Morris.

Dr. Baumwell looked like he might go all the way but something was wrong with his glasses making it difficult for him to play. He never complained but the writer noticed he was under quite a strain.

Although Bill Hoge cuts a wider swath in Yakima chess circles, he had to take a back seat to Terry Nelson in this tournament. Poor Hoge really had a rough tournament, losing 4 games.

The high spot of the tournament was the banquet. The show put on by Dr. Parker really was tops although the bathing beauties parading before all the "chess brains" may, or may not have taken minds off such trifles as wooden queens. Don Daniels did another fine job as Master of Ceremonies. Four "chess widows" were present at the banquet including Mrs. Parker and Mrs. Baumwell.

# PUPOLS WINS SEATTLE CLUB TITLE

VIKTORS PUPOLS, fresh from his big triumph at Spokane, won another title 2 days later defeating DAN WADE in an important fifth round encounter to cinch the Seattle Chess Club Championship. A week later, with the Montana crown in his pocket, Vic defeated RUSSELL VELLIAS and posted a perfect 6-0 score. This was his third championship in one week and with a total of 14 wins, 3 draws and NO losses in the 3 events, Pupols looks like a certain winner in the coming Scafair and the class of the state's active players.

In his drive to the title, Pupols doused the aspirations of TOM MAKENS, DAVID HARRISON, VIESTURS SEGLINS, CLARENCE CLARK, DAN WADE and RUSSELL VELLIAS.

DAN WADE took 2nd place with a  $4\frac{1}{2}-1\frac{1}{2}$  score, beating MAKENS, CHARLES GRIFFITHS, SEGLINS and DAVID ERICKSON. His draw in the first round with HARRISON and his defeat by PUPOLS were the only blemishes on his record.

DAVID HARRISON, a promising junior, lost only to PUPOLS and drew with WADE and VELLIAS before winning his last 3 in a row to score 4-2 and take third place.

Also with 4-2 was CLARENCE CLARK, a newcomer to the club. He last was active 20 years ago playing with WADE in

high school. CLARK was the surprise of the tournament and took fourth place.

VELLIAS and ERICKSON each scored  $3\frac{1}{2}-2\frac{1}{2}$  and took 5th and 6th respectively.

A new Latvian player, VIESTURS SEGLINS, was touted as the man to beat because of his very impressive showing at the club just before the tourney. However, in the 3rd round SEGLINS misunderstood the time limit thinking it was 20 moves per hour instead of 30. He had a winning position against PUPOLS but lost on time.

Later, SEGLINS was soundly battered by WADE and then blundered to CLARK, leaving SEGLINS with only a 3-3 score.

State Junior Champion CHARLES GRIFFITHS did not play up to expectations and had to win his last two games to break even and take 8th place.

OLIVER SCOTT MORRIS is another recent returnee to Washington chess. His upset win over GRIFFITHS gave him a good start but he lost his last two games to fall down to 9th place with a 3-3 score.

One round was played per week for 6 weeks starting March 29th and ending May 14th.

PLACE	PLAYER'S NAME	-1-	-2-	-3-	-4-	-5-	-6-	W L D	SCORE	MEDIAN
1.	Viktors Pupols	W14	W3	W7	W4	W2	W5	6-0-0	6 -0	14.0
2.	Daniel E. Wade	D3	W14	W8	W7	L1	W6	4-1-1	$4\frac{1}{2}-1\frac{1}{2}$	13.5
3.	David Harrison	D2	L1	D5	W8	W11	W9	3-1-2	4 -2	13.5
4.	Clarence Clark	W15	W10	W9	L1	L5	W7	4-2-0	4 -2	11.0
5.	Russell Vellias	L7	W16F	D3	W12	W4	L1	3-2-1	$3\frac{1}{2}-2\frac{1}{2}$	13.5
6.	David Erickson	L8	W13	D10	W11	W14	L2	3-2-1	$3\frac{1}{2}-2\frac{1}{2}$	9.5
7.	Viesturs Seglins	W5	W11	L1	L2	W9	L4	3-3-0	3 -3	14.5
8.	Charles Griffiths	W6	L9	L2	L3	W10	W12	3-3-0	3 -3	13.0
9.	Oliver Morris	W12	W8	L4	W10	L7	L3	3-3-0	3 -3	12.5
10.	Stan Sawyer	W13	L4	D6	L9	L8	W16F	2-3-1	$2\frac{1}{2}-3\frac{1}{2}$	12.0
11.	Fred M. Howard	W16	L7	D12	L6	L3	W15	2-3-1	$2\frac{1}{2}-3\frac{1}{2}$	11.5
12.	Donald Eilms	L9	W15	D11	L5	W13	L8	2-3-1	$2\frac{1}{2}-3\frac{1}{2}$	10.5
13.	William Gillette	L10	L6	D15	W16F	L12	W14	2-3-1	$2\frac{1}{2}-3\frac{1}{2}$	8.5
14.	Tom Makens	L1	L2	W16F	W15	L6	L13	2-4-0	2 -4	12.5
15.	John Gell	L4	L12	D13	L14	W16F	L11	1-4-1	$1\frac{1}{2}-4\frac{1}{2}$	9.5
16.	Kenneth Barclay	L11	L5F	L14F	L13F	L15F	L10F	0-6-0	0 -6	8.0

TOM MAKENS, who was good enough to draw with ULVESTAD at Spokane, played far below par as the standings show. This was the first completed Seattle Club Tournament in the memory of the writer and this was because it was a Swiss instead of the usual round-robin. Only Barclay's 5 forfeits kept it from being a perfect tourney.

# PUPOLS WINS IN MONTANA

IN MONTANA IT'S PEASANT VIC—by Pupols

For the past two years, BOB EDBERG of Tieton, Washington had barely squeaked by DR. ADAM SMITH of Butte to win the Montana State Championship Tournament. He failed on his third try, but saved the glory of Washington chess by bringing the eventual winner along in his car.

This year, the Montana tournament was held May 4th and 5th in Butte and attracted about 50 players, among them 2 Washingtonians and 8 from Idaho. The entrants divided according to strength into a championship and a class "B" tournament. These were both five round Swiss events. Also, there was a round-robin for juniors.

The championship tournament was won by VIKTORS PUPOLS, Edberg's passenger and fellow Washingtonian, with the score of  $4\frac{1}{2}$  -  $\frac{1}{2}$ . Pupols clung to his usual poor positions and harmless endgames with peasant stubbornness, and one after the other, the opponents stumbled.

Second and third, respectively, were GERALD MOORE of Billings, Montana, local threat, who lost only to PUPOLS in a very close endgame, and C. H. STEWART, a 79-year old Boise, Idaho man, who seemed to have weathered the long car trip up much better than his juniors. STEWART lost no games, but drew with EDBERG and JOHN BARTO. Both MOORE and STEWART scored 4-1.

BOB EDBERG, in fourth place with  $3\frac{1}{2}$  -  $1\frac{1}{2}$ , showed signs of overcoming the slump he has been in recently, but a miscalculation cost him the game against MOORE, and the subsequent draw with STEWART put him out of serious contention.

A five-way tie resulted at 3-2 among DR. DAVID GROENIG of Caldwell, Idaho; JOHN BARTO of Great Falls, Montana; BRYANT HANSON of Idaho; HAROLD HUGHART of Idaho and THEODORE STELMACH of Butte, Montana.

GROENIG was the only player to draw PUPOLS, who thereby completed the remarkable feat of winning three tournaments in

nine days. BARTO, who played in the Washington Open at Spokane last fall, was the third undefeated player in the tournament, winning one and drawing four.

## Other Scores:

RALPH HANSON, Missoula, Mont.	$2\frac{1}{2}$ - $2\frac{1}{2}$
LORENDES MAURY, Butte, Montana	$2\frac{1}{2}$ - $2\frac{1}{2}$
EUGENE COYAN, Idaho	2 - 3
DICK VANDENBURG, Idaho	2 - 3
HERSCHEL PETERSON, Billings	$1\frac{1}{2}$ - $3\frac{1}{2}$
R. K. HART, Idaho	$1\frac{1}{2}$ - $3\frac{1}{2}$
PAUL SHANLEY, Deer Lodge, Mont.	1 - 4

There were also four withdrawals.

The Class "B" winner was HERBERT A. WENDEL of Butte,  $4\frac{1}{2}$  -  $\frac{1}{2}$  with HELMER LUNDBERG, Missoula, 4-1, second.

ROBERT HOLLIBAUGH of Missoula captured the junior round-robin with a score of  $6\frac{1}{2}$  -  $\frac{1}{2}$ . STAN COLENSO and GARY A. WENDEL of Butte tied for second place.

First and second place winners in all classes received trophies. GERALD MOORE as highest ranking Montana player was declared Montana Champion and received possession of a plaque for the year. The tournament was under the direction of the Butte Chess Club. DR. ADAM SMITH was president, HERBERT A. WENDEL was association secretary for the contest.

Since the rounds of the different "A", "B" and Junior tournaments constantly overlapped, DR. ADAM SMITH devoted himself to directing the tournament. He was responsible for bringing the tournament to the picturesque city of Butte and the organizational arrangements, such as a banquet Saturday night, the Sunday lunch supplied by wives of the club members, and the handsome trophies.

It is to be hoped that DR. SMITH will return to the players' arena next year.

At the annual dinner meeting in the Finlen Western Hotel Saturday eve, Great Falls was selected as the site for 1958.



# Demonstration of Veri-Typer Composing Machine

(See story on page 1)

## Letters To Ye Ed

ARTHUR DAKE congratulated us on the style of the article about him and U'-VESTAD. "Let us say Dake is not in retirement, but in hibernation, as I do enjoy playing chess. However, sending a daughter to college puts a strain on a person's chance to travel and play in chess tournaments. Margie plans to attend the University of Mexico in her junior year. So, to give a long range picture, Arthur Dake, in two years, hopes to participate in all the big chess tournaments in the United States.

CLIFF DOLPH described a meeting with Dake. "While lunching with Dake, I was surprised to discover a small peg-board chess set under my left arm. This led to a contest between the salad and desert, with yours truly on the white side of a Ruy Lopez. After a dozen mild enough moves and a second cup of coffee, *White* was at ease. *Black* was about to start on his blueberry pie when he remarked in a kindly and instructive tone that the tendency of most players is to look only for brilliancies. From this *White* sensed at once that *Black* had doubts about his position and commenced a savage attack on his dish of vanilla ice cream. *Black* retaliated with an adroit fork thrust deeply into luscious pastry. *White* reinforced his center, with telling dips from his vanilla reserves forcing *Black* to ease his cramped position with sip after sip of coffee. It seemed to *White* that all he had to do was light a cigarette and all would be over, when the ancestors of all earthquakes and tornados met in the right hand squares of the chess board causing *White* to suddenly recall an overdue appointment.

SGT. ROBERT KARCH, Washington Chess Federation Rating Statistician, writes from Presidio of Monterey, California.

"I am working right along on the Northwest Rating List for the July issue but it is to be expected that the USCF

1957 National Rating List (coming out in next issue of *Chess Life*) will take the spotlight for awhile. However, many WCF members probably do not have such a national rating. These individuals who cannot take the time off or do not have the opportunity to compete in "big" tournaments, will have their performance in league matches and club tournaments fully recognized by the Washington State Chess Federation Rating System."

"Some WCF members may compare their national with their regional rating and find no small difference. This will be easy to understand if we remember that the USCF rates only tournaments and matches on which it receives a complete report (on a special form provided for the purpose) plus rating fees. What is not reported or not paid for is ignored by the USCF as "no contest" so it logically follows that most state league matches and city and club tournaments are not figured in so that the national list is, actually, incomplete." (EDITOR'S NOTE: Even some of our biggest tournaments were not sent in for rating during the past.)

The Washington Chess Federation now rates every single match or tournament game (except speed events) that is reported to the WCF. No special form is required if forfeits are shown and full names given. There is no charge for this rating service. This procedure of taking all rating information out of an organization's official publication is, in my opinion, far superior to the USCF collect-as-catch-can method of dealing with individuals."

I will gladly answer all questions about the ratings or the system used through open letters in the Washington Chess Letter.

We have a tremendously active club down here. Last Monday night ROSSOLIMO played a 33 game simultaneous allowing only 3 draws. Also we had radio match."

# GAMES by Wade

We pass along some of the better games played at the recent Inland Empire Open.

## V. PUPOLS

## O. ULVESTAD

1. P-K4	P-K4	33 K-Q2	R-R8
2. N-KB3	N-QB3	34 R-R5	P-R5
3. B-N5	N-B3	35 P-QN4	P-N4
4. O-O	NxP	36 P-N5	K-Q2
5. P-Q4	N-Q3	37 K-B3	K-B2
6. BxN	QPxB	38 P-K6	K-N3
7. PxP	N-B4	39 P-K7	R-K8
8. QxQch.	KxQ	40 RxB	RxB
9. N-B3	P-KR3	41 K-N4	R-K7
10 P-QN3	P-QN4	42 R-R6ch.	K-N2
11 B-N2	P-QR4	43 P-B4	RxB
12 N-K4	P-R5	44 R-KN6	R-N6
13 KR-Q1ch.	K-K1	45 R-N7ch. ?----	
14 P-KR3	B-K3	If 45 K-B5, RxB; 46 R	
15 N-Q4	B-Q4?	-N7ch., K-N1; 47 K-N6, K	
16 NxNP	PxN	-B1; 48 P-B5, R-Q6; 49 P	
17 RxB	P-QB3	-B6, P-R6; 50 RxB, P-R7;	
18 R-Q3	P-R6	51 R-R5, R-Q7; 52 R-R8ch	
19 B-Q4	NxB	R-Q1; 53 RxB better.	
20 RxN	P-R4	45 ----	K-B1
21 QR-Q1	R-KR3	46 P-N6	RxB
22 N-Q6ch.	BxN	47 RxB	K-N2
23 RxB	RxB	48 P-B5	R-R8
24 RxB	R-B1	49 R-N7ch.	K-B3
25 K-B1	K-K2	50 R-B6ch.	K-Q4
26 K-K2	P-B3	51 R-Q7ch.	K-B3
27 P-B4	PxB	52 R-Q6ch.	K-N2
28 PxB	P-B4	53 R-R6, P-R6; 54 K-N	
29 K-K3	R-B1	5, R-N8ch.; 55 K-B4, R-B8	
30 R-QB6	R-B8	ch.; 56 K-Q5, R-Q8ch.; 57	
31 RxB	R-QR8	K-K4, R-B8; 58 K-Q5, R-Q8	
32 RxB	RxB	ch.; 59 K-K4, R-QB6 ?? 60	
		R-R7ch., Black resigns.	

The ending is poorly played

## R. EDBERG

## DR. BAUMWELL

1. P-K4	P-K4	17 K-N1	Q-Q2
2. N-QB3	N-KB3	18 B-B1	R/1-K1
3. P-KB4	P-Q4	19 KR-B1	N-B5
4. P-Q4	B-QN5	20 R-B2	R/1-K3
5. P-QR3	BxNch.	21 Q-B5	P-KN3
6. PxB	NxB	22 Q-B3	P-KB4
7. N-B3	PxBP	23 R-N1	Q-N4ch.
8. BxB	O-O	24 Resigns.	
9. B-Q2	B-N5	After 24 K-R2, R-R3;	
10 B-K2	BxN	25 R-Q1 (or anything!),	
11 BxB	Q-R5ch.	RxBch.; 26 BxB, Q-R5 and	
12 P-N3	Q-R6	mate in two moves.	
13 BxN	R-K1		
14 Q-B3	RxBch.	So East triumphed a	
15 B-K3	N-Q2	couple of times in this	
16 O-O-O	N-N3	tournament over West.	

## G. S. G. PATTERSON

## V. PUPOLS

1. N-KB3	N-KB3	16 B-N2	KR-Q1
2. P-B4	P-KN3	17 Q-B1	P-K5
3. N-B3	B-N2	18 BxB	PxN
4. P-Q4	O-O	19 Q-R6	P-B3
5. P-K4	P-Q3	20 BxQP	N-N5
6. B-K2	P-K4	21 BxBP	NxB
7. P-Q5	P-B4	22 BxB	RxB
8. PxB e.p.	PxB	23 Q-K3	N-B5
9. O-O	Q-B2	24 QR-B1	Q-B2
10 N-K1	N-R3	25 KR-K1	NxB
11 N-Q3	B-K3	26 Q-N5	R-KB1
12 P-QN3	P-Q4	27 R-B1	N-B5
13 BPxB	PxB	28 Resigns	
14 NxQP	NxN	Because after 28 Q	
15 PxB	BxB	-N4, P-KR4 wins.	

A SHORT, SHORT !

## J. MCCORMICK

## R. HIGGINSON

1. P-Q4	P-Q4	11 B-Q2	NxKP??
2. P-QB4	P-QB4	12 B-N5ch!	K-Q1
3. BPxB	QxB	13 NxPch.	K-B2
4. N-KB3	N-QB3?	14 NxN!	QxB
5. N-B3	Q-Q1	15 R-N1!	Q-Q6
6. P-Q5	N-N5?	16 B-B4ch.	Resigns.
7. P-QR3	N-R3	Or if 15---Q-K1; 16	
8. P-K4	Q-N3?	B-B4ch., K-Q2; 17 Q-R4ch	
9. N-K5!	N-KB3	does the deed.	
10 B-N5?!	QxBP		

## R. KITTREDGE

## R. EDBERG

1. P-K4	P-QB4	21 K-N1	Q-N1
2. N-KB3	N-QB3	22 Q-Q3	BxB
3. P-Q4	PxB	23 QxB	Q-N6
4. NxP	N-B3	24 PxB	P-B3
5. N-QB3	P-Q3	25 P-B5	Q-R7ch.
6. P-B3	P-KN2	26 K-B1	B-N6
7. B-K3	B-Q2	27 RxBch.	K-R1
8. Q-Q2	P-QR3	28 R/Q-N1	R/R-B1ch.
9. B-K2	B-N2	29 K-Q2	R-B7ch.
10 O-O-O	P-QN4	30 K-K3	RxB
11 P-KN4	O-O	31 R-N2	QxB
12 P-KR4	P-N5	32 K-B4	P-Q4
13 N-Q5	P-QR4	33 P-N6	K-N2
14 NxNch.	BxN	34 R/2-R2	R-KR1
15 P-N5	B-N2	35 P-K5	RxB
16 P-KB4	P-R5	36 PxBch.	PxB
17 P-R5	P-N6	37 RxB	Q-Q3ch.
18 P-R3	PxB	38 K-N4	Q-B2
19 KxB	NxNch.	39 R/R-K1	Q-B5
20 BxN	B-K3	40 R-K7ch.	Resigns.

A fine win for Kittredge over the present Washington State Champion. Reputations are made and wrecked in these tournaments! This was one of the all too few wins by an Easterner over a Westerner, if Yakima is West.

In the final round of the Inland Open there was a mistake in the pairings which pitted Edberg with 2½ against Ulvestad who had 3½ at the time. At the same time, it was noted there were players with 3-2 who were playing each other! Someone observed there was something wrong when Edberg gave up his queen for a knight early in this 34 move game. We will show you why!

O. ULVESTAD

R. EDBERG

1. P-Q4	P-QB3	If he had attempted
2. P-K4	P-KN3	ed to keep his Q,
3. N-QB3	B-N2	8----Q-N3; had to
4. B-QB4	P-Q3	be played. If Q-R4;
5. N-B3	QN-Q2?	9. QB-Q2 kills!
6. N-KN5!	N-R3	8. ---- Q-N3
If P-K3; 7. BxP!		9. NxBch. K-B1
7. BxPch. NxB		10 N-K6ch. K-N1
K-B1 loses the Q.		11 B-Q2 P-QR4
8. N-K6	N-B3	We're trying to not
Edberg was unjustly		lose the Q!
criticized for giving		12 White has an over
up his queen but		whelming position,
he held out until he		Black has his Q. It
was mated on the 34th		is unlikely that he
move.		can last long.

Still, after looking over the game at this point, White could go wrong and Black could wriggle away.

DR. PARKER

W. BAILEY

1. P-Q4	N-KB3	24 R-KN3	K-R2
2. P-QB4	P-K3	25 R-R3	B-Q2
3. N-QB3	P-QN3	26 P-N4	K-N1
4. P-K4	B-N2	27 P-N5?	PxP
5. B-Q3	P-Q4	28 PxP	N-N3??
6. BPxP	PxP	( See diagram )	
7. P-K5	N-K5	Black must play 28	
8. N-B3	B-K2	----P-N3 and White	
9. O-O	O-O	has no advantage.	
10 Q-B2	NxN	29 Q-R5! N-B5	
11 PxN	P-KR3	If Black plays N-R	
12 B-K3	P-QB4	the result is same	
13 Q-K2	P-B5	as in text.	
14 B-B2	Q-Q2	30 Q-R8ch. KxQ	
15 N-Q2	N-B3	31 N-N6ch. K-N1	
16 P-B4	P-B4?	32 R-R8 mate.	

Gives White a strong passed pawn.

17 N-B3	Q-K3
18 B-B2	R-B2
19 B-KR4	R/1-KB1
20 BxB	NxB
21 N-R4	P-QN4
22 QR-N1	P-R3
23 R-B3	B-B3

Dr. Parker gets a nice start in this first round contest in the Inland Empire Open Tourney.

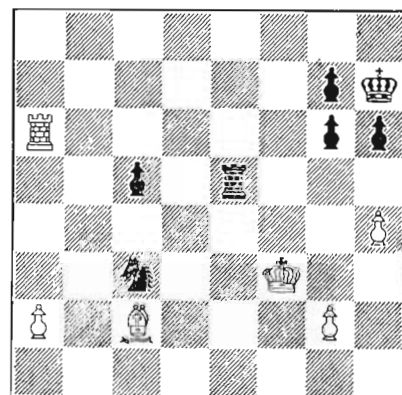
Possibly the game is most brilliant.

In the third round, played until the wee, small hours of the night, Wade had a bad game against Horton Thompson and had to rely on a swindle to win.

Wade played 32 P-KR4. Thompson seeing a chance to win a pawn, fell for the trap completely playing 32 ----N-K5ch. 33 K-B3, NxP?? 34 B-B2 killed him! Diagram.

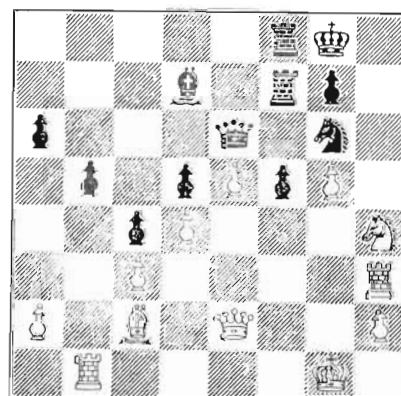
Horton had to give up his rook for a bishop or be mated.

THOMPSON



WADE ( after 34. B-B2 )

BAILEY



PARKER ( just before 29. Q-R5! )

D. WADE

J. MCCORMICK

TWO GAMES FROM THE SEATTLE CHESS CLUB TOURNAMENT

1. P-K4	P-Q3	22 QxRP	R-R1
2. P-Q4	N-KB3	23 Q-N6	QR-N1
3. B-Q3	P-KN3	24 Q-R7	R-R1
4. N-K2	B-N2	25 Q-Q7	BxNch.
5. O-O	O-O	26 PxB	QxPch.
6. P-KB4	P-K4	27 B-K3	Q-Q4
7. P-B3	QN-Q2	28 P-R3	QR-Q1
8. N-Q2	R-K1	29 Q-N4	P-B4
9. Q-B2	N-B1	30 Q-Q4	QxQ
10 N-B3	PxBP	31 BxQ	N-B3
11 BxP	B-N5	32 BxN	RxB
12 P-KR3	BxN	33 P-KN4	R/1-KB1
13 RxB	N-R4	34 PxP	PxP
14 QR-KB1	N-K3	If 34----RxP; 35 R	
15 B-B1	R-KB1	xR, RxR? 36 RxR, Px	
16 Q-N3	Q-K2	R; 37 P-R4 wins.	
If 16---P-QN3; 17			
RxP, RxR; 18 QxN, N			
-B3; 19 B-QB4, Q-K;			
20 QxBch., QxQ; 21			
BxQch., KxQ; 22 P -			
K5 wins a knight.			
Or 16----P-QN3; 17			
RxP, RxR; 18 QxN, Q			
-K1; 19 B-B4, QxQ ;			
20 BxQ, R-KB1; 21 P			
-KN4, N-B3; 22 B-N5			
NxKP; 23 B-K7, N-Q7			
24 R-B4, B-R3; 25 P			
-N5 wins.			
17 QxP	QR-N1	42 ----	R-QN1
18 Q-R6	P-QB4	43 R/3-QN3	K-Q3
19 B-QB4	PxP	44 R-N6ch.	R-B3
20 BxN	QxB	45 P-QR4	RxR
21 NxP	QxKP	46 RxRch.,K-B2; 47	
		R-KR6,KxP; 48 RxPch	
		K-N3; 49 R-KB7,R-QR	
		1; 50 RxP	Drawn.

Although he lost two pawns in the opening, John Gell was able to win quickly in his third round game with William Hoge.

J. GELL

W. HOGE

1. P-K4	P-K3	13 B-K3	B-K2
2. P-Q4	P-Q4	14 N/3-Q4	B-R3
3. P-K5	P-QB4	15 P-QN4	BxN
4. N-KB3	N-QB3	16 QxB	Q-B2
5. B-QN5	B-Q2	17 QR-B1	QxP
6. P-QB3	Q-N3	18 N-N5	B-Q3??
7. B-R4	PxP	19 P-B4	Q-B3
8. BxN	BxB	20 NxBch.	K-Q2
9. O-O	PxP	21 Q-N5ch.	KxN
10 NxP	B-N5	22 B-B5ch.	K-B2
11 N-K2	B-N4	23 B-K7ch.	Resigns.
12 P-QR3	Q-R4	Gell wins again!	

C. GRIFFITHS

D. ERICKSON

1. P-Q4	P-Q4	31 PxB	BxP
2. P-QB4	P-QB3	32 R-N6	N-B1
3. N-KB3	N-B3	33 R-N2	Q-K2
4. N-B3	P-K3	34 B-N5	QxQ
5. B-N5	B-K2	35 RxQ	N-K2
6. P-K3	QN-Q2	36 R/2-B2	R-Q3
7. PxB	KPxP	37 K-B2	R-B1
8. B-Q3	N-R4	38 K-K3	K-N2
9. P-KR4	P-KN3	39 R/2-B3	K-B1
10 O-O	N-N2	40 K-Q2	K-K1
11 R-B1	N-B3	41 K-B2	R-K3
12 N-K5	N-Q2	42 K-N3	P-R4
13 BxB	QxB	43 K-N4	K-Q1
14 N-B3	O-O	44 BxB	PxB
15 P-QR3	P-KB4	45 R-R5	R-N1ch.
16 Q-B2	N-B3	46 K-B5	K-B1
17 P-KN3	N-K5	47 R/B-R3	R-B3
18 N-K2	N-R4	48 R-R8	K-B2?
19 P-QN4	P-QR3	49 R/3-R7ch.?	
20 N-K5	B-K3	White should have	
21 N-B4	NxN	played 49 RxR,KxR; 50	
22 KPxN	QR-K1	N-Q7ch. winning rook.	
23 R-N1	Q-N2	49 ----	R-N2
24 K-N2	B-Q2	50 RxRch.	KxR
25 KR-B1	N-Q3	51 R-K8	N-B1
26 P-R4	R-B1	52 R-N8	N-K2
27 P-B3	P-R3	53 R-N7	R-K3
28 Q-B5	R-B3	54 N-Q7	K-B1
29 P-N5	RPxP	55 N-B8,R-K6; 56 K	
30 PxB	R-QB2	-Q6,K-Q1; 57 N-K6ch.,	
		and White won.	

F. M. HOWARD

V. SEGLINS

1. P-Q4	P-K3	18 P-KB4	B-KB3
2. N-KB3	P-KB4	19 BxB	RxB
3. P-K3	N-KB3	20 B-B3	R-K3
4. B-Q3	P-QB4	21 Q-Q2	Q-Q3
5. QN-Q2	P-Q4	22 QR-B1	QR-Q1
6. P-QB4	N-B3	23 KR-Q1	Q-K2
7. O-O	B-K2	24 R-K1	P-KR3
8. P-QN3	O-O	25 P-KN3	K-R1
9. B-N2	N-QN5	26 K-B2	P-Q5
10 B-K2	P-QN3	27 PxB	RxQP
11 N-K5	B-N2	28 Q-B3	BxB
12 P-QR3	N-B3	29 KxB	Q-N2ch.
13 N/2-B3	N-Q2	30 K-B2	R/3-Q3
14 QPxP	NxN	31 QxP?	R-Q7ch.;32
15 NxN	NxN	R-K2,RxRch.; 33 KxR ,	
16 BxN	PxP	Q-N7ch.; 34 K-K3,Q-Q7	
17 PxB	PxP	ch.; White resigns.	

MORE GAMES FROM THE INLAND EMPIRE OPEN NEXT MONTH PLUS SEATTLE TMT. GAMES

FOLLOW WADE MOVE AFTER MOVE IN HIS AMAZING WINS OVER SEGLINS & GRIFFITHS!

# BOEINGS, $9\frac{1}{2}$ TO $4\frac{1}{2}$

MAX BADER led his team into its 9th match of the season when Boeings downed McNeil Island  $9\frac{1}{2}$  to  $4\frac{1}{2}$  in a match played May 12th. This left Boeings with a four won and five lost record, 2-4 in League play and 2-1 in non-league action.

Bader on first board and MARTIN FASS on last board each played two different boards because McNeil had seven players and Boeings only five. Bader scored  $3\frac{1}{2}$  -  $\frac{1}{2}$  on the top two boards and Fass scored 4-0 on the last two boards. In between boards found JOHN GELL winning his first game and losing his second to TRAVIS and JOHN BACKER did the same against SWEETZY. On the remaining board, CARL HANSON lost twice to DORAME.

BOEINGS CLUB	$9\frac{1}{2}$	MCNEIL ISLAND	$4\frac{1}{2}$
Max Bader	$1\frac{1}{2}$	Unger	$\frac{1}{2}$
Max Bader	2	Baehm	0
John Gell	1	Travis	1
John Backer	1	Sweetzy	1
Carl Hanson	0	Dorame	2
Martin Fass	2	Berry	0
Martin Fass	2	Ege	0

We understand the Tacoma Club played matches with McNeil and Olympia. The results have not been sent in to the editor. We hope to have them for the next issue of the Chess Letter.

## WHERE TO PLAY CHESS!

SEATTLE CHESS CLUB Room 604 YMCA. Open daily afternoons and evenings.

SPOKANE CHESS CLUB Meets Thursday evenings at the Desert Hotel.

TACOMA CHESS CLUB Meets Friday evenings at the downtown library.

YAKIMA CHESS CLUB Meets at the Yakima YMCA on Mondays at 7 p. m.

TRI-CITY CHESS CLUB (Richland, Kennewick and Pasco) meets Thursdays at 7 p. m. at the Richland Community Hall on George Washington Way.

WALLA WALLA VALLEY CHESS CLUB meets Fridays at 7:30 p. m. in the YMCA.

OLYMPIA CHESS CLUB Meets on Monday evenings at 7:30 in the Community Center.

# SEAFAIR OPEN AUG. 3-4

TOM MAKENS, WCF Tournament Director, wishes to announce that the 1957 Seattle Seafair Open will be held Saturday & Sunday August 3rd and 4th. The location is yet to be decided and will be announced, in ample time, in our next issue. The Prevention of Cruelty To Dumb Chess Players Committee has decided to limit the Swiss Tournament to five rounds. Proper pairings will insure a proper winner.

First round - 9 a. m., second round 1 p. m., third round 6 p. m. Saturday.

Fourth round will start at 8 a.m. on Sunday and the fifth and final round will start at 1 p. m. Sunday.

This will be a five round Swiss with the Median tie-breaking system being used.

There will be a guaranteed \$25 first prize. Other prizes to be announced.

The time control will be 50 moves in two hours for each contestant.

The entry fee will be \$3.30 and this tournament will be USCF rated.

All players are invited to help make this the largest and best event ever held by participating.

ROBERT EDBERG is the defending Seafair Open Champion. VIKTORS PUPOLS will be the logical "Man To Beat" this year.

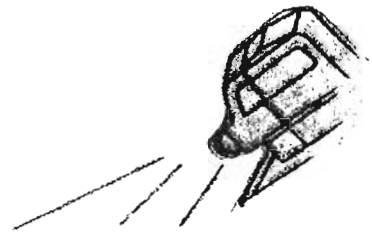
Last year we had 17 players from out side of Seattle in the Seafair Tournament and only 7 Seattleites. However, now the city chess pot is really boiling and perhaps 20 Seattleites will turn out. If the out-of-town response is as good as it was last year, this will be a record-breaker.

WEST SEATTLE CHESS CLUB Meets on the second and fourth Friday evenings at the High Point Recreation Center.

BELLEVUE CHESS CLUB Meets in the homes of its various members. For information regarding this club, phone Mr. V. W. BEVER, Gibson 3636.

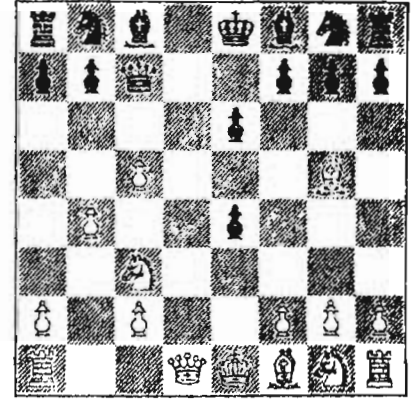
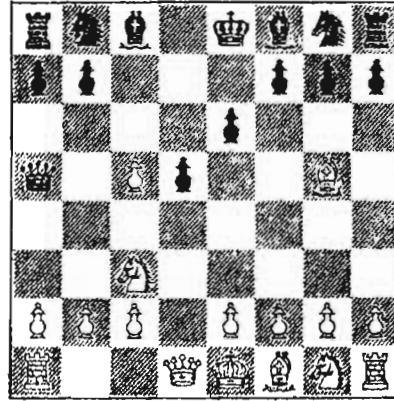
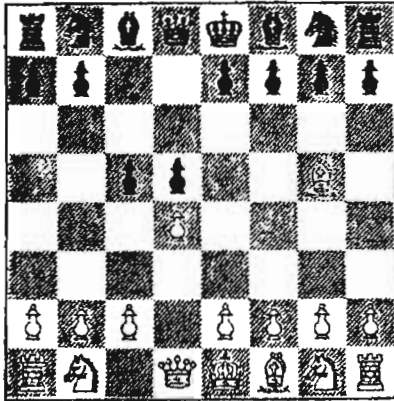


To initiate our new font of chess character type we wanted a short, sharp game. The one below came from the notebook of Elmars Zengalis, published for the first time in Chess Letter. It illustrates how a master chess player takes advantage of weak moves by an average player.



## MAGIC LANTERN MINIATURE

1. P-Q4 P-Q4
2. B-KN5 a P-QB4



**1**

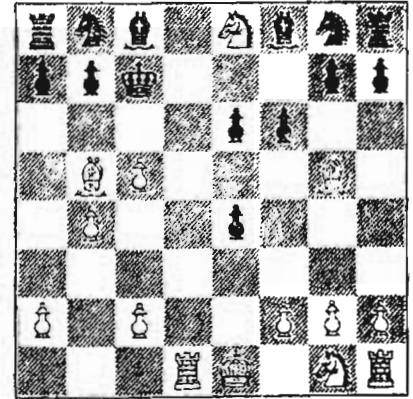
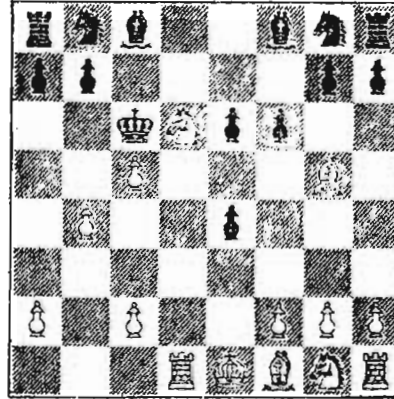
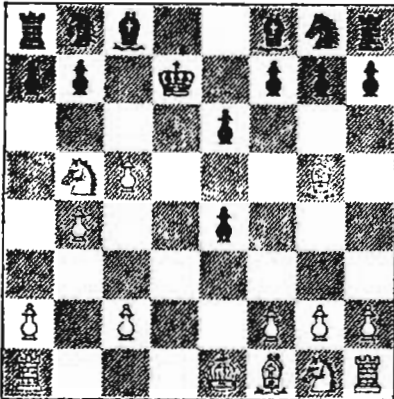
3. PxP Q-R4ch b
4. N-QB3 P-K3

**2**

5. P-K4! PxP
6. P-QN4! Q-QB2 c

**3**

7. N-QN5 Q-Q2
8. QxQch KxQ d



**4**

9. R-Q1ch K-QB3
10. N-Q6! P-KB3

**5**

11. B-QN5ch K-QB2
12. N-K8 checkmate

- a. An experiment to avoid known variations. Not a sound move.
- b. A common move by average players. It compromises Black's game
- c. The mysterious bishop came into action, with a mating threat.
- d. Otherwise 9. N-QB7 checkmate!

# *CHESS around the WORLD*

BY DON EILMES

## NEW WORLD CHAMPION

A new chess champion of the world was crowned in Moscow, when Vassily Smyslov drew the 21st and 22nd games of his match with Mikhail Botvinnik. The final score was 12½ - 9½ in favor of Smyslov.

The expected gallant last stand by a fighting champion was just not to be. Botvinnik it is presumed was just too exhausted by the strain of the long encounter to offer any real resistance. He did the same as admit defeat by offering a draw in the last two games, which were just through the opening stages with 13 and 11 moves.

Smyslov, 36, who is ten years younger than the retiring champion was warmly applauded as Botvinnik stood up, shook hands and walked off the stage of the Tschaikowsky Music Hall, yielding the title he had held since 1948 and had defended successfully in the previous matches, with David Bronstein in 1951 and Smyslov in 1954.

Of the 22 games contested in the match just ended, Smyslov won six outright, lost three and drew thirteen. The two remaining games on the schedule were canceled as they could not effect the outcome.

Mikhail Botvinnik was born in what was then St. Petersburg, later Petrograd and eventually Leningrad. He learned to play chess at the age of 15, and at once showed remarkable talent for the game. A year later on Nov. 20, 1925, his first milestone of his chess-playing career occurred. He was one of thirty opponents pitted against the World Champion, Jose R. Capablanca. Botvinnik was one of the four winners at the exhibition, and when it was over, Capablanca made the remark, "He plays with the self confidence of a master."

No matter what development Botvinnik's career may take, one thing is certain, his numerous fine games have given much enjoyment to millions of people and will continue to do so.

Smyslov was born in Moscow March 23, 1921. He played his first game at the age of six, taught by his father. At the age of 14 he entered his first tournament with poor results. But he advanced rapidly by playing at every opportunity and reading every chess book he could find. In 1942 Smyslov won his first major success, the Championship of Moscow, which he repeated in 1944. In 1948 he was the runner-up to Botvinnik in the World Championship Tournament held to determine the successor to Alekhine. Last year he won the challengers tournament in Amsterdam the prelude to his 2nd and successful try for the world title.

## NORTH-SOUTH TEAM MATCH

The annual North-South Team Match is on again, the 24th in the series is scheduled to start 10AM June 2 at the Hotel California in Fresno, California.

## GLIGORIC WINS IN ENGLAND

Svetozar Gligoric, chess champion of Yugoslavia, won the International Chess Tournament at the Stevenson Memorial Chess Congress, held at Bognor Regis in England. His score was 8-2 after drawing in the last round against F.H. Clarke of England. Andersen of Denmark finished in a tie with Wade of New Zealand, for second place.

# THE PRESIDENT'S PAGE

Dr. G.H. Parker

In spite of my sincere efforts to have someone from the west side nominated and elected as president for the coming year your directors refused to follow my suggestion and in effect "railroaded" me into another term.

My report of the year's activities stated that I felt my work consisted mostly of sitting back and watching the others do their jobs and that I felt someone closer to the seat of action would be of more value to the organization.

Dan Wade was kind enough to say that any promotional work done in Spokane was, in itself, work for the state as a whole.

My report commended him for his success as editor of the Letter, which reached an all time high in literary quality and in general interest. Dan really did himself out this year.

My praise also went to Weaver for his untiring work as publisher. It is evident that I was not alone in appreciation of his efforts for your directors awarded him the Oscar for outstanding aid to the Federation.

Few of you know how many hours Don Eilmes put in telephoning and writing in his highly successful efforts to increase your membership. The all time high of over 200 members is ample proof that he did an outstanding job as Publicity Director.

Our old standbys, Raleigh, Merk, and Husby have been doing their work so well for so long we are inclined to take them for granted. How about dropping them one of your postal cards and telling them how you feel? Get in your two cents worth as it were.

The annual meeting went off smoothly and with dispatch. It was the first one of the three which I have attended in which there was no haggling, griping or carping. It was a pleasure to preside over it.

I still think my idea of a "resident's Page" each month is a good one even though I was remiss in my efforts last year. When things are running on an even keel possible subject matter is limited. I'll see what I can do to find things which will interest you in the next twelve months.

# THE USCF PLAYERS' RATING LIST

NORTHWEST PLAYERS GRADED ON A NATIONAL BASIS  
BY 'CHESS LIFE' RATING STATISTICIAN KENNETH HARKNESS

United States Chess Federation has just released a list of 3,350 chess players, rated in sponsored tournaments during 1956. The following are the Northwest players included. A supplemental list is promised soon, to cover performance from Jan. 1, through March 31, 1957. The ratings are, as usual, controversial, and anguished cries of the wounded will soon rise. -FHW

Aikman, P., Spokane	1862			Taro, L., Calif.	1950	
Alberts, D., Spokane	1425			Teltoff, M., Seattle	1400	
Alexander, R., Spokane	1621			Thompson, A., Kansas	1650	
Amdahl, K., Spokane	1400	1	Noland	2063	Thompson, H., Idaho	1752
Bailey, L., Spokane	1684	2	McCormick	2049	Thunberg, Spokane	1703
Ball, L., Liberty Lake	1700	3	Cornelius	2041	Vellias, Seattle	1906
Baumwell, M., Walla W.	1912	4	Warner	2027	Voget, W., Spokane	1774
Bills, W., Texas	2059	5	Edberg	2015	Wade, D., Seattle	1996
Bishop, G., Calif.	1941	6	Pupols	2007	Warner, Richland	2027
Breakey, J., Spokane	1463	7	Wade	1996	La Freniere, Seattle	1729
Brieger, R., Calif.	2139	8	Hoge	1922	Lienenweber, Spokane	1500
Calkins, J., Spokane	1650	9	Murray	1917	Livermore, Spokane	1600
Cornelius, G., Spokane	2041	10	Baumwell	1912	Lulham, Spokane	1674
Crawford, D., Spokane	1742				Lunde, A. Spokane	1750
Daniels, D., Spokane	1822				McBride, P., Kelso	1600
DeWitt, J., Ohio	1819				McCormick, Seattle	2049
DeYarmon, D., Longview	1690				Makens, T., Seattle	1835
Duggan, W., Spokane	1600				Malcolm, H. Spokane	1730
Edberg, R., Tieton	2015				Meade, T., Spokane	1450
Edberg, A., Tieton	1600				Mehaffey, Spokane	1700
Eilmes, D., Seattle	1760				Minea, G., Seattle	1680
Eilmes, M., Seattle	1600				Moore, D. Portland	1808
Falkenhagen, Edmonds	1650				Morgan, R. Spokane	1650
Farrelly, J., Spokane	1655				Munger, L. Seattle	1500
Frederic, J., Spokane	1482				Murphy, R., Spokane	1780
Gemar, J., Kelso	1550				Murray, A., Raymond	1917
Gleeson, F., Spokane	1522				Nelson, T., Yakima	1866
Glenn, G., Spokane	1650				Neuman, P., Spokane	1769
Gray, C., Spokane	1620				Noland, H., Seattle	2063
Griffiths, C., Seattle	1734				Parker, G., Spokane	1740
Hamilton, D., Tacoma	1740				Parsons, Centralia	1885
Hartman, J., Spokane	1662				Peterson, Spokane	1650
Hay, E., Spokane	1600				Popham, Oregon	1735
Higginson, R., Spokane	1836				Potter, F., Pullman	1600
Hoge, W., Yakima	1922				Pupols, V., Tacoma	2007
Johnson, F., Spokane	1500				Rice, R., Spokane	1640
Karch, R., Calif.	1900				Rood, P., Moses Lake	1790
Kiperts, A., Spokane	1670				Sawyer, S., Seattle	1720
Kiszely, K., Spokane	1619				Schain, G., Calif.	2101
Kittredge, R. Spokane	1820				Schmitt, J., Calif.	2167
Kronquist, WallaWalla	1800				Watson, Longview	1880
Skarsten, M., Oregon	1750				Weaver, F., Seattle	1738
Smith, K., Pt. Towns.	1500				Wilson, D., Spokane	1450
Spatz, S., Oregon	1600				York, D., Oregon	1770
Stenerson, Spokane	1400					
U.S. JUNIOR CHAMPIONSHIP						
JULY 8-14, SAN FRANCISCO						
		TOP TEN				
		IN WASHINGTON				
		TOP-RANKING				
		ACTIVE U.S. MASTERS				
		Masters	2200	SOLUTIONS TO 5-MINUTE TEST		
		Experts	2000	R-R8+	RxN B-B6 RxB	
		Class A	1800			
		Class B	1600			
		Class C	Below			

## Plan to compete in the Summer events

Some of the most enjoyable chess events of the year will take place during the next few months. It is not too early to plan vacations and weekends to coincide with them.

### San Francisco

U.S. Junior, July 8-14, will provide free milk and ice cream.

### Seattle Seafair

There are exciting things to see and do during Seafair. Bring your family to watch it while you meet players from many states (early in August).

### British Columbia

The International Match has alternated the trophy for many years. Let's make an extra effort this year (late August) when we meet at the border.

### MARYHILL

An exhibition of priceless chess sets, being consigned from countries all over the world, is being planned. The tentative date is the last week in August. Arthur Dake, Portland chess master, has been engaged for free lectures, by the art museum (on the Washington side of the Columbia River).

Still in the planning stage is the innovation of a new kind of tournament, "The Washington Amateur Championship", in which trophies will be awarded instead of cash. The nationally rated experts and masters will not be invited. However, now that the Northwest has such an impressive list of high ranking players, an effort will be made to re-establish the "Masters and Experts Tournament", to be held simultaneously, for the viewing pleasure of the non-professionals, during their leisure time. The amateur title could be made a subject of challenge any time ten or more players sign up.

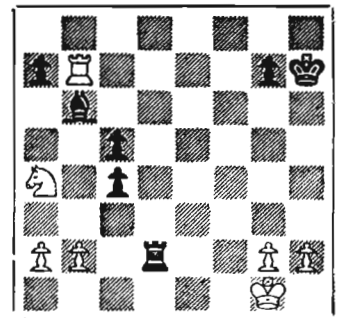
## SOLVERS' CONTEST TIED

### BRAINBUSTER NOW CONFRONTS THE LEADING ASPIRANTS

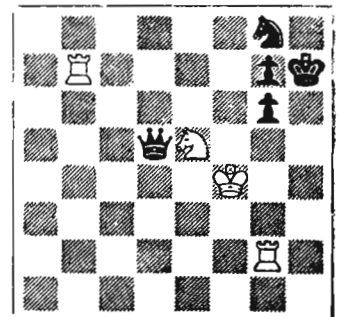
THE CHAMPIONSHIP, AND THE PRIZE AWARDS WILL BE DECIDED BY THE ENDGAME BELOW.

Spencer, Dolph, Ballantine, and Oldham were 100% correct for all positions to date, and are requested to send in solutions to the tie-breaker below.

Others are invited to send a solution for "honorable mention".



The proposition is "Black to play" and we will grade on basis of showing best moves for both sides. Just send the main line.



#### SOLUTION

- |   |           |      |
|---|-----------|------|
| 1 | R-R2ch    | N-R3 |
| 2 | RxNch     | KxR  |
| 3 | N-N4ch    | K-R4 |
| 4 | N-B6ch    | PxN  |
| 5 | R-R7 mate |      |

ADDRESS SOLUTIONS TO F.H. WEAVER,  
501 OLYMPIC PLACE, SEATTLE 99,  
BEFORE JUNE 20.



"A" Division

# POSTAL CHESS



R.R. MERK

Parsons	1765
Weisscher	1755
Bever	1697
Kaffenberger	1682
Weaver	1656
Wade	1653
Coubrough	1644
Mage	1611
Edberg, R.	1576
Parker	1507
Dickson	1507
Skarsten	1504
Luters	1472
Woodward	1442
Carter	1441
Brookshire	1429
Husby	1422
Knapp	1403
Phillips	1327
Howard	1280
Cairncross	1255

Bob Merk's overnight visit to the hospital was extended week by week until by last report he had been there a month, and was getting pretty tired of the whole routine. However there is every indication that by the time this issue hits your mailbox he will be home again and eagerly awaiting your postcard reports and letters.

Al Benson reports that he was credited by mistake with a win over Brookshire last month. So the ratings of each have been re-adjusted to correct this error of 90 points, which must have been quite a shock to Brooksire, the innocent victim.

"B" Division

VanNatta	1458
Laine	1404
Merk	1396
Spatz	1361
Lyberger	1258
Mills	1257
McDonald	1252
Haynes	1238
Edberg, A.	1220
Rogers	1210
Youngman	1206
Hamilton	1205
Gordon	1191
Spencer	1185
Nichols	1149
Lee	1140
Raleigh	1134
Gemar	1121
Smith	1121
Tresidder	1108
Watson	1070
Ball	1050
Bennett	1050
Bowerman	1050
James	1050
Miller	1050
Scripps	1050
Pifley	1050
Benson	1031
Skoglund	1023
Aldridge	1010
Pierce	1009
Skinner	964
Notter	920
Waldron	790
Adamson	781
Jacobson	710

4/26	56B11A & B	Ball	withdrawal	decision	pending		
4/27	56B11B	Spatz	1	Pierce	0	18	
	56B9A	Brookshire	1	Waldron	0	none	
4/29	56B8B	Mills	1	Hamilton	0	56	
	56A2A	Dickson	1	Mage	0	75	
5/6	56A6A	Woodward	1	Howard	0	42	
5/9	57B3B	Smith	1	Gordon	0	71	

We are indebted to George Bishop for discovering, adapting, and forwarding the following table of facts and figures:

SOME VITAL STATISTICS  
TO SHOW WHAT'S WRONG!

Population of the United States	.....	165,000,000
People of retirement age	.....	<u>63,000,000</u>
Balance left to do the work	.....	102,000,000
Children, youths, students	.....	<u>55,000,000</u>
Left to do the work	.....	47,000,000
Working for the government	.....	<u>22,000,000</u>
Left to do the work	.....	25,000,000
People in State and local government	.	<u>18,800,000</u>
Left to do the work	.....	6,200,000
People in hospitals, asylums, prisons		<u>5,680,000</u>
Left to do the work	.....	520,000
Bums who won't work	.....	<u>518,000</u>
Left to do the work	.....	2,000
Chess masters	.....	<u>92</u>
Left to do the work	.....	1,908
Chess players who think they're masters		<u>1,906</u>

This just leaves you and me.  
Why don't you get on the ball?

# PLAY CHESS BY MAIL!

One of the best ways to improve your chess skill—and to have a fine time doing it—is to play chess by mail. If you have not yet taken part in our Postal Tournaments you are missing a lot of fun and valuable experience.

ENTRY IS 50¢. A 6-MONTH SUBSCRIPTION EXTENSION IS THE PRIZE IN EACH 3-MAN SECTION. RULES ARE SENT  
**POSTAL CHESS EDITOR**  
1026 E. 71, SEATTLE 15, WASH.

WASHINGTON CHESS LETTER  
1026 E. 71st ST. SEATTLE, 15, WASH.

Return postage guaranteed  
Form 3547 requested.

B. B. Strachan  
5103 N.E. 15 Ave.  
Portland 11, Ore

4/58

