

WASHINGTON

CHESS

LETTER

LATE FLASH!

SPOKANE,---

--- INLAND EMPIRE

RESULTS: PUPOLS &

DON EILMES SCORE

5-1 TO TOP 32

DETAILS, PIC'S, NEXT ISSUE

MAY, 1957



SUBSCRIPTION PRICE OF TWO DOLLARS A YEAR INCLUDES MEMBERSHIP IN THE W.C.F.

CHESSE LETTER

OFFICIAL PUBLICATION OF THE
WASHINGTON CHESS FEDERATION

Editor D. E. Wade
11023 25th N. E. Seattle, Wash.

Circulation R. R. Merk
1026 E. 71st. Seattle, Wash.

Publisher F. H. Weaver
501 Olympic Place Seattle, Wash.

May contributors - George Bishop, Don Eilmes, Dennis Hamilton, Dick Vandenberg, Charles Joachim

OTHER W. C. F. OFFICERS

President Dr. Griffith H. Parker
416 Hyde Bldg. Spokane, Wash.

Vice-President Max Mage
2437 55th S. W. Seattle, Wash.

Secretary Peder Husby
Route One E. Stanwood, Wash.

Treasurer W. H. Raleigh
4312 Woodland Park Ave. Seattle, Wash.

Publicity Director Don Eilmes
1303 44th Ave. S. W. Seattle, Wash.

Tournament Director Robert Edberg
Route One Tieton, Wash.

Tournament Director Tom Makens
Knickerbocker Hotel Seattle, Wash.

AFFILIATED W. C. F. CHESS CLUBS

Seattle, Spokane, Tacoma, West Seattle, McNeil, Kitsap, Tri-Cities, Boeings, and Olympia.

BOOK REVIEW

THE GOLDEN TREASURY OF CHESS by the editors of Chess Review. Profusely illustrated. Over 300 pages. Over 250 diagrams and a complete library of chess in one volume. HARVEY HOUSE, Irvington-on-Hudson, New York. Price \$3.95.

You may not have been aware, and probably wouldn't care, but after the usual 9 months waiting period Mr. and Mrs. Wade had a boy. Mrs. Wade feels that there was insufficient coverage in the local papers of the big event. "Mrs. Daniel E. Wade, 11023 25th N. E., boy." It seems like you must have a 20 pounder or triplets in the back seat of a taxicab to get any attention. She has asked me to use my influence as editor to give her a little more publicity.

On the morning of April 16th a 6 pound 11 oz. handsome baby boy was born to Mr. and Mrs. Daniel E. Wade. The boy will be named Christopher.

ANNUAL MEETING APRIL 14th

The Annual WCF Business Meeting on Sunday, April 14th in room 237 of the Seattle YMCA was quite successful. With but one exception, all officers were reelected. TOM MAKENS replaced JIM MCCORMICK as West Washington Tournament Director. Two committees were formed. One to go over the rules for the annual International Match with British Columbia and the other to detail the section of the WCF Constitution dealing on the duties of the officers.

A large, new chess club joined the WCF in the Olympia Club. The WCF also remained affiliated with the USCF. The Oscar Award for outstanding achievement went to Mr. HOWARD WEAVER, W.C.L. Publisher.

Especially praised for their efforts, were HOWARD WEAVER, DAN WADE and BOB MERK.

The Treasurer's Report noted a large gain in membership and a substantial amount in the treasury.

Present were DR. G.H. PARKER, MIKE CONWAY and JOHN HARTMAN of Spokane; MAX MAGE, Vice-President and representing West Seattle PEDER HUSBY, Secretary; W.H. RALEIGH, Treasurer; DAN WADE, Editor; HOWARD WEAVER, Publisher; DON EILMES, Publicity Director; Max Bader, representing Boeings Club; CHARLES JOACHIM and ED TVEDEN, representing Olympia; TOM MAKENS who was elected Tournament Director and WILLIAM GILLETTE, representing the Seattle Chess Club; VIKTORS PUPOLS, representing the Tacoma Chess Club; and MRS. DON EILMES, ALLAN MCGREGOR and CHARLES GRIFFITHS were present as onlookers.



Jim McCormick knew the answer.
"Which way do the pawns go?"

GRIFFITHS CAPTURES 'JUNIOR'



THE NEW CHAMPION
CHARLES GRIFFITHS

SWINDLE SINKS MCCORMICK

CHARLES GRIFFITHS stole the Washington State Junior Championship from defending champion JAMES MCCORMICK in the 1957 Junior held April 13th in a room at the Seattle Y. Both scored 3-0 before meeting in the fourth round. The defending champion played brilliantly and after 47 moves had Griffiths busted. (See Games) JOHN SCHROEDEL, one of the contestants, came upon the scene at that time and confused by the position of the white and black pawns asked, "Which way do the pawns go?" McCormick knew the answer. "They go this way!" quoth he as he savagely pushed 48 P-K5. The quick answer was 48----R-R8ch. forcing a stalemate. Although both front-runners won their final, fifth round encounters to finish deadlocked with $4\frac{1}{2}$ - $\frac{1}{2}$, Griffiths won the title with 9 Median points to McCormick's 8.

Since McCormick will shortly be 21, this is his last State Junior while the new champion is only 15 and thus has several opportunities to repeat.

STAN SAWYER, RON LOUGHEED, JOHN HARTMAN and JERRY BALL followed the two

leaders in the order named. They all finished with 3-2 scores. Griffiths and McCormick, since they had equal scores, split first and second prize money. Sawyer, Lougheed and Hartman won book prizes donated by GEORGE BISHOP and DON FILMES.

MIKE CONWAY of Spokane headed the second half of the standings with 2-3. Others with 2-3 were DALE BJORNSON and MUNRO. Bringing up the rear, all with 1-4, were PAT HICKEY, JERRY HANSON and JOHN SCHROEDEL. Hickey and Hanson tied for 10th place and Schroedel took 12th.

There were a few forfeits among the also-rans in the last two rounds. Hickey forfeited to Conway and Schroedel. Hanson forfeited games to Bjornson and Munro.

John Hartman and Mike Conway traveled all of the way from Spokane for the tourney and Ron Lougheed is President of the Tacoma Chess Club. Hartman won the last Spokane Woodpushers tourney over a year ago. All other players in this State Junior were from Seattle.

(Story by D. Wade)

Place	Contestants	-1-	-2-	-3-	-4-	-5-	W	L	D	Score	Median
1.	CHARLES GRIFFITHS	W-3	W-7	W-5	D-2	W-4	4	0	1	$4\frac{1}{2}$ - $\frac{1}{2}$	9.00
2.	JAMES MCCORMICK	W-4	W-10	W-7	D-1	W-3	4	0	1	$4\frac{1}{2}$ - $\frac{1}{2}$	8.00
3.	STAN SAWYER	L-1	W-11	W-8	W-5	L-2	3	2	0	3 - 2	9.50
4.	RON LOUGHEED	L-2	W-12	W-9	W-6	L-1	3	2	0	3 - 2	9.00
5.	JOHN HARTMAN	W-11	W-6	L-1	L-3	W-8	3	2	0	3 - 2	8.00
6.	JERRY BALL	W-8	L-5	W-10	L-4	W-7	3	2	0	3 - 2	6.50
7.	MIKE CONWAY	W-12	L-1	L-2	W-10*	L-6	2	3	0	2 - 3	9.50
8.	DALE BJORNSON	L-6	W-9	L-3	W-11*	L-5	2	3	0	2 - 3	8.00
9.	JIM MUNRO	L-10	L-8	L-4	W-12	W-11*	2	3	0	2 - 3	5.50
10.	PAT HICKEY	W-9	L-2	L-6	L-7*	L-12*	1	4	0	1 - 4	6.00
11.	JERRY HANSON	L-5	L-3	W-12	L-8*	L-9*	1	4	0	1 - 4	6.00
12.	JOHN SCHROEDEL	L-7	L-4	L-11	L-9	W-10*	1	4	0	1 - 4	5.50

(* Forfeited games.) In last year's Oregon Open, DICK PARSONS of Centralia was giving McCormick a bad beating when McCormick pulled a similar swindle to gain a draw and go on to win that tournament. Things tend to even out given time. -2-

Hewitt tops Pierce opener

C. R. HEWITT, third man on the Tacoma club lineup stormed through the challengers' section of the Pierce County Championship which was held on six Friday evenings at the Tacoma Chess Club from February through March.

The conditions of the tournament were that the top four placers or the first two brackets would be chosen to play in the Pierce County Closed Tmt. against defending champion Vernon Holmes. As it turned out, both systems get four players into the closed.

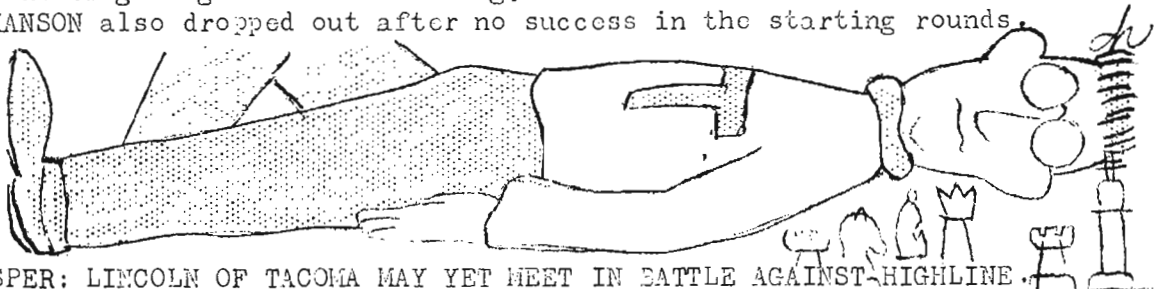
Name	Round						Score	Solk.	Median
	1	2	3	4	5	6			
1. C. R. Hewitt	W10	W12*	W5	W6	W2	W7	6 - 0	16.0	
2. D. Somsen	L6	W10	W3	W7	L1	W8	4 - 2	21.0	
3. C. Carlson	L12	W11	L2	W8	W4	W5	4 - 2	16.0	
4. G. Seymour	W11	L6	W13*	W5	L3	Bye	4 - 2	14.0	
5. R. B. Leach	W13	W7	L1	L4	W6	L3	3 - 3	20.0	14.0
6. R. W. Loughheed	W2	W4	W12*	L1	L5	L9	3 - 3	20.0	13.0
7. D. E. Hamilton	W8	L5	W9	L2	W11*	L1	3 - 3	20.0	13.0
8. D. W. Stimson	L7	W13	W10	L3	Bye	L2	3 - 3	15.0	
9. L. Coubrough	F	Bye	L7	W11	W10	W6	3 - 3	12.0	
10. A. Cook	L1	L2	L8	W13*	L9	W11*	2 - 4	20.0	
11. G. Wolover	L4	L3	Bye	L9	L7*	L10*	1 - 5	14.0	
12. V. Pupols	W3	L1*	L6*	F	F	F	1 - 5	4.0	
13. J. Hanson	L5	L3	L4*	L10*	F	F	0 - 6	6.0	

Second only to Hewitt's unbeatable 6-0 score, DICK SOMSEN, a new club player reached the top four as anticipated but not without first round interference by a tournament dark horse, Ron Loughheed. Somsen was followed very closely by veteran C. CARLSON who also sneaked into the winners' bracket.

Newcomer G. SEYMOUR also toppled into the big four, a fact which makes the tournament director blush every time he thinks of Seymour's sixth round bye! Believe it or not, Seymour was in the bottom bracket of yet un-byed players at the beginning of the sixth round due to an unfinished fourth round game.

Three inseparable school chums shared the glory of the "I-almost-made-it-to-the-finals" group. R. B. LEACH, the teacher, and RON LOUGHEED plus D. E. HAMILTON, two students, managed to blunder into the three-three group. D. W. STIMSON and L. COUBROUGH also vied for the mode position with Coubrough making a fine showing after starting a round late.

A. COOK and G. WOLOVER both high school students were shielded from last place by the shock of the tournament, VIKTORS PUPOLS---tournament favorite---who, after giving Carlson a lashing, was unable to finish the tournament. J. HANSON also dropped out after no success in the starting rounds.



WHISPER: LINCOLN OF TACOMA MAY YET MEET IN BATTLE AGAINST HIGHLINE.

JOACHIM OLYMPIA CHAMP

CHARLES JOACHIM won the First Olympia Chess Championship with a perfect 6-0 score in the 19 player, six round Swiss held recently. Charles is a former Washington State and Seattle City champion. He also won the first Washington Open, a 37 player event held back in 1951. Joachim's State government job forced him to live five days a week in Olympia and spend his weekends in his Seattle home. A former Washington Chess Federation Tournament Director, Charles finally decided to try and organize a chess club in Olympia. His efforts were very successful as a 19 player tourney in an area which usually was hard pressed to raise a half dozen players would indicate.

In his successful parade to the title, Joachim met and defeated HARTLY KRUEGER, HARRY PARMELEE, ELLIS AYER, WALT CONNER, CHESTER HARMESON and PHIL STYMANS. Of all of the players in the tourney, only Harmeson and Ayer are of the old guard, all others being new to organized chess in this state.

CHESTER HARMESON finished second with 5-1, losing only to the champ. He won brilliantly from Conner in the last round. WALT CONNER took third with 4-2. Also with 4-2 and finishing third to sixth were ELLIS AYER, PHIL STYMANS and ED TVE-EN.

There were some forfeits and also because of late entries, the rounds of a few games were mixed up as can be seen in the tournament summary given below.

Position	Name of Player	-1-	-2-	-3-	-4-	-5-	-6-	Score	S-B Pts. (Solkoff)
1.	CHARLES JOACHIM	W9	W7	W4	W3	W2	W5	6 - 0	24.0
2.	CHESTER HARMESON	W13	W17	W11	W7	L1	W3	5 - 1	20.0
3.	WALT CONNER	W8	W5	W15	L1	W4	L2	4 - 2	24.0
4.	ELLIS AYER	W17	W6	L1	W11	L3	W7	4 - 2	21.5
5.	PHIL STYMANS	W16	L3	W8	W10	W11	L1	4 - 2	20.5
6.	ED TVE-EN	L7	L4	W12	W16	W8	W10	4 - 2	17.5
7.	HARRY PARMELEE	W6	L1	W12	L2	WF	L4	3 - 3	23.5
8.	DAVE HANON	L3	W16	L5	W19	L6	W18	3 - 3	17.5
9.	HARTLEY KRUEGER	L1	L11	L18	W13	W19F	W15F	3 - 3	16.5
10.	JOHN MACKENZIE	L15	W14	W19	L5	W12	L6	3 - 3	15.5
11.	FRED DUNSTEN	D12	W9	L2	L4	L5	W18	2 $\frac{1}{2}$ - 3 $\frac{1}{2}$	20.5
12.	DON MCCUISTON	D11	L6	L7	W18	L10	W14	2 $\frac{1}{2}$ - 3 $\frac{1}{2}$	18.0
13.	PHIL DOLAN	L2	WByc	LF	L9	D17	W19F	2 $\frac{1}{2}$ - 3 $\frac{1}{2}$	13.0
14.	ART BECK *	L19	L10	W16	D17	L18	L12	1 $\frac{1}{2}$ - 4 $\frac{1}{2}$	14.0
15.	JOHN GILCHRIST	W10	W19	L3	LF	L7F	L9F	2 - 4	18.5
16.	MONROE BURNETT	L5	L8	L14	L6	W18	W17	2 - 4	16.5
17.	L. C. DURWALD	L4	L2	WByc	D14	D13	L16	2 - 4	15.0
18.	DALE WELLS	L8	L16	W9	L12	W14	L11	2 - 4	12.5
19.	JAMES N. SCHADER	W14	L15	L10	L8	L9	L13F	1 - 5	14.0

* Mr. Beck seems to have been misplaced. According to the available figures, he would place 18th, moving Gilchrist, Burnett, Durwald and Wells each up one notch.

GILCHRIST (White) vs. CONNER (Black) 7. 0-0! ? N-B3 11 N-N7ch., K-B1; 12 Px
 1. P-K4 P-K4 4. N-B3 NxN 8. P-B4 B-B4ch. Pch., KxN; 13 BxP, NXP;
 2. N-KB3 N-KB3 5. QPxN P-KB3 9. K-R1 P-B4 14 B-KB4, R-K1; 15 Q-Q2,
 3. B-B4 NXP 6. N-R4 P-KN3 10 NXP! ? P-Q4 B-B4; 16 QR-K1, Q-Q3! 17
 B-R6ch., K-R1; 18 Q-N5,
 N-N5! 19 White resigns.

A third round game from the Olympian Tournament.

THE PUGET SOUND LEAGUE

BOEINGS ESCAPES CELLAR, DOANS W. S. 6½-3½

Aided somewhat by Jim McCormick's refusal to arrange a date with Jim Trembois, thus giving two points to Boeings on first board, Boeings won its second match of the season beating West Seattle 6½ to 3½. Max Mage's offer to substitute Garrit Zwcers as a substitute for McCormick was not accepted as a week had gone by before he was even notified of the trouble. In defense of McCormick, he was absolutely unable to meet Trembois in the chess club because of circumstances beyond his control.

BOEINGS CLUB	6½	WEST SEATTLE	3½
Jim Trembois	2-Forfeit	McCormick	0
Max Bader	2	Max Mage	0
Don Eilmes	1½	Ben Weisscher	½
John Gell	0	Eugene Vukonich	2
Martin Fass	1	F. M. Howard	1

FINAL 1956-1957 STANDINGS

	Won	Lost	Pts.	For	Agst.
Seattle Chess Club	5	- 1	36	24	
Tacoma Chess Club	4	- 2	36	24	
Boeings Chess Club	2	- 4	28	32	
West Seattle Club	1	- 5	20	40	

OLYMPIA EDGES PAST WEST SEATTLE, 5½ to 4½

In March 31st games played at Seattle Chess Club, Olympia beat West Seattle in a non-league match 5½ to 4½. West produced Garrit Zwcers, a strong newcomer from Denver, but he had time clock trouble losing 1½ - ½ to Charles Joachim. William Conner who had beaten Bader in the match against Boeings, proved that was no flash in the pan by downing Max Mage 2-0. Best for the losers were Jim Munro and Ben Weisscher.

The Olympia cause was aided considerably by Allan McGregor borrowed from the champion Seattle team.

OLYMPIA CLUB	5½	WEST SEATTLE CLUB	4½
Charles Joachim	1½	Garrit Zwcers	½
William Conner	2	Max Mage	0
Harry Parmelee	½	Ben Weisscher	1½
Allan McGregor	1½	F. M. Howard	½
Phil Stymans	0	Jim Munro	2

BOEINGS CHESS TEAM VISITS MCNEIL MAY 12 TH

On Sunday, May 12th, the Boeings C.C. plans a trip to McNeil for a chess match.

HIGHLINE HIGH SCHOOL STUNS BOEINGS 7-3 !

The Boeings Chess Club team, confident of an easy victory, was completely and thoroughly routed 7 to 3 by the Highline High School Chess Club team.

Highline was aided by the non-appearance of Trembois but the real, decisive crusher was applied by Bjornson. He upset Eilmes twice. The match, held at the Seattle Chess Club March 31, was the first for Highline this year.

HIGHLINE H. S. CLUB	7	BOEINGS CLUB	3
Stan Sawyer	2 (Forf.)	Trembois	0
Chris Calligan	0	Max Bader	2
Dale Bjornson	2	Don Eilmes	0
Gale Hake	1	John Gell	1
Chris Napjus	2	Carl Hanson	0

FINAL PUGET SOUND LEAGUE INDIVIDUAL SCORES

Place	Player	Team	Board	W	L	D	Pts.
1.	Charles Griffiths	(S)	4	9	-2	-1	9½
2.	Ron Loughood	(T)	5	8	-2	-2	9
3.	Max Bader	(B)	2	7	-4	-1	7½
4.	Dan Wade	(S)	2	5	-3	-4	7
5.	Tom Makens	(S)	3	5	-3	-4	7
6.	Viktors Pupols	(T)	1	3	-1	-6	6
7.	Charles Hewitt	(T)	3	6	-6	-0	6
8.	Eugene Vukonich	(W)	4	5	-4	-1	5½
9.	Don Eilmes	(B)	3	4	-5	-3	5½
10.	Jim Trembois	(B)	1	4	-4	-2	5
11.	Vernon Holmes	(T)	2	4	-1	-1	4½
12.	Dennis Hamilton	(T)	5	4	-1	-1	4½
13.	Robert Edberg	(S)	1	3	-3	-2	4
14.	John Gell	(B)	5	3	-5	-2	4
15.	F. H. Weaver	(S)	4	3	-0	-1	3½
16.	James McCormick	(W)	1	3	-2	-1	3½
17.	F. M. Howard	(W)	5	2	-7	-3	3½
18.	David Erickson	(S)	5	2	-2	-2	3
19.	Max Mage	(W)	3	3	-9	-0	3
20.	Martin Fass	(B)	5	2	-3	-1	2½
21.	Stuart Woodward	(W)	5	2	-3	-1	2½
22.	Allan McGregor	(S)	5	2	-2	-0	2
23.	Royal Leach	(T)	5	2	-2	-0	2
24.	Ben Weisscher	(W)	2	1	-5	-2	2
25.	Frank Uriyu	(B)	4	1	-2	-1	1½
26.	Les Coubrough	(T)	4	1	-3	-0	1
27.	C. Carlson	(T)	4	1	-3	-0	1
28.	Pat Hickey	(S)	5	0	-1	-0	0
29.	David Stimson	(S)	5	0	-1	-0	0
30.	Dick Parsons	(W)	1	0	-2	-0	0
31.	Carl Hanson	(B)	5	0	-4	-0	0

Also Parsons forfeited 2-0 to Holmes and McCormick forfeited 2-0 to Trembois.

SEASON RECORDS OF THE CHESS TEAMS APRIL 21 ST.

	WLD	WLD
Seattle Chess Club	611	Olympia Chess Club 121
Tacoma Chess Club	420	Highline H.S. Club 100
Boeings Chess Club	350	McNeil Island Club 120
West Seattle Club	260	

PUGET SOUND LEAGUE ALL STARS

Board One	<u>Viktors Pupols</u> of the Tacoma Club.
Board Two	<u>Max Bader</u> of the Boeings Club.
Board Three	<u>Tom Makens</u> of the Seattle Club.
Board Four	<u>Charles Griffiths</u> of Seattle Club.
Board Five	<u>Ron Loughood</u> of Tacoma Club.

PUGET SOUND LEAGUE CHAMPIONS

1956-1957	Seattle Chess Club	Won 5	Lost 1.
1955-1956	Seattle Chess Club	Won 5	Lost 1.
1954-1955	University of Washington, unbeaten		
1953-1954	Seattle YMCA, Kitsap and Tacoma.		
1952-1953	Tacoma Chess Club - undefeated.		
1951-1952	University of Washington, 1 loss.		
1950-1951	Seattle Chess Club, 1 drawn match		
1949-1950	The Seattle Chess Club		
1948-1949	The Tacoma Chess Club		
1947-1948	The Tacoma Chess Club		
1946-1947	The Tacoma Chess Club		

SEATTLE CHESS CLUB TOURNEY AT HALFWAY MARK.

Sixteen of the Seattle Chess Club's best players have entered the six-round Swiss for the 1957 championship. At the half-way mark CLARENCE CLARK and VIKTORS PUPOLS are on top each with 3-0. Only a half point behind with $2\frac{1}{2}-\frac{1}{2}$ is DAN WADE, the defending champ. Tied with 2-1 are VIESTURS SEGLINS, a strong newcomer from Latvia, and OLIVER MORRIS. There's a traffic jam for the next spot in the standings. All with $1\frac{1}{2}-1\frac{1}{2}$ after 3 rounds are STAN SAWYER, RUSSELL VELLIAS, DON EILMES, FRED H. HOWARD, and DAVID ERICKSON. CHARLES GRIFFITH DAVID HARRISON and TOM MAKENS are tied at 1-2. With $\frac{1}{2}-2\frac{1}{2}$ are JOHN GELL and WILLIAM GILLETTE while KEN BARCLAY is in the caboose with 0-3.

All games have been played at the rate of one round a week except two games forfeited by Barclay, one to Vellias and the other to Makens.

Fourth round encounters find Pupols vs. Clark, Wade vs. Seglins, Morris vs. Sawyer, Vellias vs. Eilmes, Howard lost to Erickson, Griffiths vs. Harrison, Gell vs. Makens, and Barclay vs. Gillette with the first named having the white pieces.

By the time you read this, the tourney is about finished. Full story next month.

GRIFFITHS LEADS W. S. INVITATIONAL

State Speed and Junior Champion Charles Griffiths has won over Makens and Wade to take the first rung on the championship ladder in the West Seattle Invitational being played at Don Eilme's home and at the Seattle Chess Club. Charles has scored 2-0 with four left. Dan Wade has lost to Griffiths, drawn a game with Makens and won $1\frac{1}{2}$ to $\frac{1}{2}$ over Eilmes to post a 2-2 score. In third is Don Eilmes with $1\frac{1}{2}-1\frac{1}{2}$. He won a game from Makens before drawing and losing games against Wade.

Tom Makens is temporarily in the cellar in this tournament with losses to Eilmes and Griffiths and a draw with Wade totaling up to a $\frac{1}{2}-2\frac{1}{2}$ score.

WHERE TO PLAY CHESS :

SEATTLE CHESS CLUB Room 604 YMCA. Open daily afternoons & evenings.

SPOKANE CHESS CLUB Meets Thursday evenings at the Desert Hotel.

TACOMA CHESS CLUB Meets on Friday evenings at downtown library.

YAKIMA CHESS CLUB Meets at Yakima YMCA Mondays at 7 p.m.

TRI-CITY CHESS CLUB (Richland, Kennewick and Pasco) meets Thursday evenings 7 p.m. to 9:30 p.m. at the Richland Community Hall on George Washington Way.

WALLA WALLA VALLEY CHESS CLUB is in session Fridays at 7:30 p.m. in the Walla Walla YMCA.

OLYMPIA CHESS CLUB Meets on Monday evenings at 7:30 in the Community Center.

WEST SEATTLE CHESS CLUB Meets on the second and fourth Friday evenings at the High Point Recreation Center.

BELLEVUE CHESS CLUB Meets in the homes of the various members. For information, phone Mr. V.W. Bover, Gibson 3636.

AROUND THE CHESS WORLD BY DON EILMES

WORLD CHAMPIONSHIP MATCH

Vassily Smyslov is once again two games ahead in the present match for the world championship being contested in Moscow. After 17 of the 24 rounds the score is $9\frac{1}{2}-7\frac{1}{2}$, with the present champion Mikhail Botvinnik on the short end.

In the 17th game Smyslov triumphed by exceptionally fine play in a close ending. At adjournment time, after five hours of play, Botvinnik suggested a draw, the forces having been reduced to minor pieces and six pawns each. Smyslov had a passed pawn on the QB file which he felt offered some chance of winning, so he elected to continue.

Overnight analysis vindicated Smyslov's judgement. The dangerous pawn had to be blocked by a knight, and this left an opening on the king side that allowed Smyslov to break through for a victory in 69 moves.

LOMBARDY WAS FIFTH

Young William Lombardy, 18, only American contestant in the International Tournament at Mar del Plata, finished fifth among the field of world famous masters. Paul Keres finished first, Miguel Najdorf second, and Lotov and Panno tied for third and fourth. Argentina's leading player, Najdorf, lost the final round game to his countryman, young Oscar Panno.

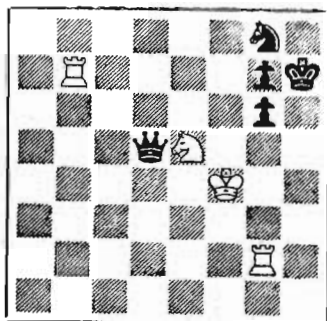
CHESS IN THE PHILIPPINES

Chess is now reported to be almost as popular in the Philippine Islands as it is in Holland, since the Philippines sent a team to the International Team Tournament played in Moscow last year. The United States was unable to raise funds to send a team to that event.

Three Filipinos played in the Melbourne Olympic Tournament, which was completed recently. F. Campomanes finished fourth, R. Cardose was tied for fifth, and the Philippine champion, Joe Pascual, finished in 18th place. R. Cardose, 19, was the youngest player in the tournament.



SOLVERS' CONTEST



WHITE TO PLAY

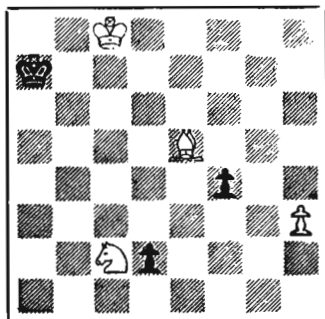
This is the final position in the series. It is an expert grade endgame. It could almost be called a problem, by asking for mate in 5, but not quite, because Black could prolong the agony with hopeless sacrifices. Being more difficult than previous positions, we will rate it at 8 points for accurate solutions giving the best moves by both sides. Less points will be awarded for slightly imperfect answers.

We have printed a tie-breaker endgame below, and regard it as master grade. It is not necessary to solve it before the deadline, but you can start looking at it so that if we notify you by mail or in the next issue of Chess Letter that you are in a tie for one of the prizes, you can then send in your concept of how fantastic chess can get. Make White's BEST moves. Don't leave any loose ends. Your opponent is a master, too.

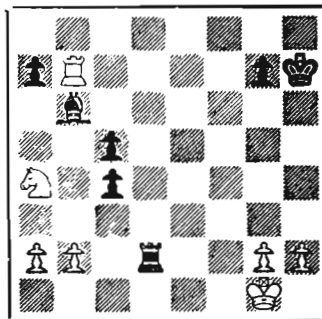
Correct solutions to the April position were received from the following: C.J. Sween, J.G. Scripps, R.G. Spencer, Bruce Oldham, C. Dolph, C. Ballantine, thus continuing the tie for first for four of them. Sween and Scripps both missed sending a solution to the February endgame, at least we failed to receive one, so they and Horton Thompson are slightly off the pace.

Wrote H. Thompson, from the "Roaring Potlatch River" near Kendrick, Idaho. "This month's hellish concoction took a big chunk out of the Southwest corner of my brain. When I first looked at it I'd started mixing pancakes and left some lard to melt on the stove. When I glanced up again the skillet was full of fire, but I was calm and courageous. The skillet was too hot for the dog to lick, so I had to wash it out and start over. Decided the first move was NOT to put lard on the stove. Finally got a batch of pancakes on, and barely glanced at the problem, then looked around and the cakes were black. I've had lots of trouble with this problem."

Like many others, Horton missed, but was going good for awhile.



SOLUTION: 1 N-N4, P-C:8/Q;
2 B-Q4†, K-R1; 3 N-Q5 (or
R6), QXB; 4 N-B7†, K-R2; etc.



TIE BREAKER
BLACK TO PLAY. (See text)

GAMES

By D. E. Wade

MORE GAMES FROM THE PUGET SOUND OPEN TOURNEY

TOM WAKENS

JIM MCCORMICK

- | | |
|----------|----------|
| 1. P-K4 | P-QB4 |
| 2. N-KB3 | P-Q3 |
| 3. P-Q4 | PxP |
| 4. NxB | N-KB3 |
| 5. N-QB3 | P-QR3 |
| 6. P-B4 | P-K4 |
| 7. N-KB3 | Q-B2 |
| 8. B-Q3 | P-QN4 |
| 9. P-QR3 | B-K2 |
| 10 O-O | O-O |
| 11 K-R1 | B-K3 |
| 12 PxP | PxP |
| 13 B-KN5 | QN-Q2 |
| 14 Q-K1 | QR-Q1 |
| 15 QR-Q1 | KR-K1 |
| 16 N-Q5 | BxN |
| 17 PxB | P-K5 |
| 18 BxKP | NxB |
| 19 BxB | Resigns. |

DR. A. A. MURRAY

F. H. WEAVER

- | | |
|------------|----------|
| 1. P-Q4 | P-KB4 |
| 2. P-KN3 | N-B3 |
| 3. B-N2 | P-QB3 |
| 4. KN-B3 | P-KN3 |
| 5. P-QB4 | B-N2 |
| 6. O-O | O-O |
| 7. N-B3 | N-R3 |
| 8. N-K5 | P-K3 |
| 9. P-KR3 | P-Q4 |
| 10 B-N5 | Q-K1 |
| 11 Q-Q2 | N-Q2 |
| 12 B-R6 | NxN |
| 13 PxN | PxP |
| 14 BxB | KxB |
| 15 QR-Q1 | N-B2 |
| 16 P-K4 | R-B2 |
| 17 P-B4 | R-Q2 |
| 18 Q-K2 | RxR |
| 19 RxR | PxKP |
| 20 NxP | N-Q4 |
| 21 N-Q6 | Q-K2 |
| 22 QxP | N-K6 |
| 23 Q-B5 | N-Q4 |
| 24 BxN | BPxB |
| 25 N-B5ch. | Resigns. |

LT. E. LEININGER

DON EILMES

- | | |
|----------|------|
| 1. N-KB3 | P-Q4 |
| 2. P-B4 | P-K3 |

- | | |
|------------|----------|
| 3. P-KN3 | N-KB3 |
| 4. B-N2 | QN-Q2 |
| 5. P-QN3 | P-KN3 |
| 6. B-N2 | B-N2 |
| 7. O-O | P-B3 |
| 8. N-B3 | O-O |
| 9. R-B1 | R-K1 |
| 10 Q-B2 | N-N3 |
| 11 P-B5 | QN-Q2 |
| 12 P-N4 | P-K4 |
| 13 P-Q3 | N-B1 |
| 14 P-K4 | P-Q5 |
| 15 N-K2 | B-N5 |
| 16 P-QR3 | N/1-Q2 |
| 17 R-N1 | Q-K2 |
| 18 B-B1 | R-KB1 |
| 19 N-R4 | N-K1 |
| 20 P-B3 | B-K3 |
| 21 P-B4 | P-B4 |
| 22 PxBP | BxB |
| 23 PxP | QxP |
| 24 NxB | RxN |
| 25 Q-B4ch. | K-R1 |
| 26 N-B4 | N-B2 |
| 27 B-R3 | P-QN4 |
| 28 Q-R2 | QR-KB1 |
| 29 BxR | RxB |
| 30 Q-KN2 | N-B3 |
| 31 B-Q2 | N/3-Q4 |
| 32 NxN | RxRch. |
| 33 RxR | NxN |
| 34 R-K1 | N-K6 |
| 35 QxP | P-KR4 |
| 36 QxKNP | Resigns. |

HUGH NOLAND

DAN WADE

- | | |
|----------|-------|
| 1. N-KB3 | P-QB4 |
| 2. P-K4 | N-QB3 |
| 3. P-Q4 | PxP |
| 4. NxB | N-B3 |
| 5. N-QB3 | P-Q3 |
| 6. B-KN5 | P-K3 |
| 7. B-N5 | B-Q2 |
| 8. O-O | B-K2 |
| 9. Q-Q2 | P-QR3 |
| 10 BxQN | PxB |
| 11 KR-K1 | O-O |
| 12 N-N3 | P-Q4 |
| 13 P-K5 | N-K1 |
| 14 BxB | QxB |
| 15 Q-Q4 | N-B2 |
| 16 N-R4 | N-N4 |
| 17 Q-B5 | Q-Q1 |
| 18 QR-Q1 | R-N1 |
| 19 P-QB4 | N-B2 |
| 20 N-R5 | Q-K1 |
| 21 Q-Q6 | N-R1 |
| 22 P-QN3 | Q-B1 |
| 23 N-B5 | B-K1 |

Up to this point Noland plays like a Master. However, his 24th eases things a little for Wade and his 25th gives a new lease on life to the Wade forces.

24 PxP? BPxP
 25 NxRP?? R-N3
 Where did that rook come from?
 26 Q-K7 QxN
 27 P-QN4 B-R5
 28 R-Q4 R-K1
 29 Q-N5 -----

In spite of the loss of the knight, White threatens first to mount a Kingside attack and second has two passed Queen-side pawns to use in an effort to win on that side of the board.

29 ----- B-B7
 30 R-N4 B-N3
 31 P-KR4 P-R3
 32 Q-B4 Q-Q6
 33 R-N3 Q-B4
 34 Q-Q4 R-QB1
 35 R-QB3 -----

The Kingside effort halted, White tries the Queenside.

35 ----- RxR
 36 QxR/B3 Q-N5
 Black goes on the offensive at last.
 37 Q-B8ch. K-R2
 38 QxN B-K5
 39 RxB QxR
 40 N-B6 -----

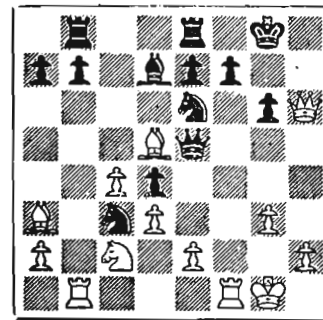
Not good but White is lost anyway.

40 ----- P-Q5
 41 P-N5 RxP

Black won in a few more moves.

<u>LT. E. LEININGER</u>	<u>DR. A. A. MURRAY</u>
1. N-KB3	P-Q4
2. P-B4	P-Q5
3. P-Q3	P-QB4
4. P-KN3	P-KN3
5. B-N2	B-N2
6. O-O	N-KB3
7. N-R3	O-O
8. N-B2	R-K1
9. P-N4	KN-Q2
10 PxP	NxP
11 B-QR3	QN-R3
12 R-N1	R-N1
13 N-N5	B-B4
14 P-B4	P-R3
15 N-B3	N-R5
16 Q-Q2	N/R3-B4
17 N-R4	B-Q2
18 N-B3	N-K3
19 N-K5	BxN
20 PxB	Q-B2
21 QxP	QxKP
22 B-Q5	N-B6?

MURRAY



LEININGER

23 QR-K1?? -----

White missed a win here with 23 RxBP, KxR; (forced) 24 Q-R7ch., K-B3; (forced since after 24-----Q-N2; 25 R-B1 Mate!) 25 R-B1ch. If Black plays 25-----K-N4; 26 Q-R4 Mate. If 25-----N-B5; 26 Q-B7ch., K-N4; 27 PxNch. winning easily. If 25-----Q-B4; 26 RxQch. and Black's position is hopeless.

23 ----- NxR
 24 PxN QxQP
 25 P-K4 PxP e.p.
 26 RxBP?? -----

A few moves too late and not sound. If 26-----KxR; 27 Q-R7ch., N-N2; 28 R-B1ch., B-B4; 29 P-N4, (??) and Black wins with R-KR1

26 ----- Q-KR4??

So Black passes up opportunity.

27 QxQ PxQ
 28 RxP/K7 RxR
 29 BxR R-K1
 30 B-R3 N-N4
 31 RxP R-QB1
 32 N-K1 B-B3
 33 R-K5 N-R6ch.
 34 K-B1 R-B2
 35 RxP R-B2ch.
 36 K-K2 R-B7ch.
 37 K-K3 RxKRP
 38 B-B5 P-R3
 39 N-B3 BxN
 40 KxB N-N8ch.
 41 K-N4 RxR
 42 KxR N-B6
 43 P-Q4 N-Q7
 44 K-N4 N-B5
 45 P-Q5 P-N3
 46 B-K7? -----
 B-Q4 looks best.
 46 ----- N-K6ch.
 47 K-B3 NxP
 48 B-Q8 K-B2

Drawn.

WASHINGTON STATE JUNIOR CHAMPIONSHIP GAME.

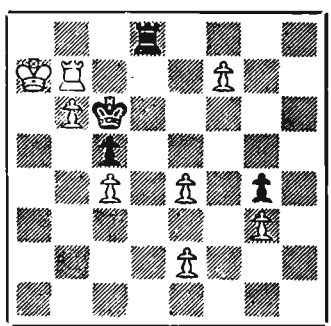
<u>JAMES MCCORMICK</u>	<u>CHARLES GRIFFITHS</u>
1. P-Q4	P-K3
2. P-QB4	B-N5ch.

3. N-B3	P-KB4
4. N-B3	N-KB3
5. Q-N3	P-B4
6. P-QR3	BxNch.
7. QxB	N-K5
8. Q-B2	P-QN3
9. P-KN3	B-N2
10 B-N2	Q-B2
11 O-O	O-O
12 R-Q1	P-Q3
13 P-Q5	P-K4
14 N-R4	Q-B2
15 P-QN4	P-N3
16 B-R6	R-K1
17 BxN	PxB
18 QxP	N-Q2
19 N-B3	N-B3
20 Q-R4	B-B1
21 N-N5	Q-K2
22 P-N5	N-N5
23 P-R4	NxB
24 QxN	Q-N2
25 QxQch.	KxQ
26 P-R5	B-B4
27 N-K6ch.!	----

Forces a won rook and pawn end game for White.

27 ----	BxN
28 PxB	QR-Q1
29 PxP	PxP
30 R-R7ch.	K-B3
31 R-Q7	R-QN1
32 R/lxP	P-R4
33 R-B7ch.	K-N4
34 K-N2	P-R5
35 K-B3	R-KB1
36 K-K4	RxR
37 PxR	R-KB1
38 R-Q7	PxP
39 RPxP	K-B3
40 K-Q5	P-N4
41 K-B6	K-K3
42 R-N7	P-K5
43 KxP	K-Q3
44 K-R7	P-N5
45 P-N6	P-K6
46 PxP	K-B3
47 P-K4	R-Q1

GRIFFITHS



McCORMICK

48 P-K5??? R-Rch.!
49 KxR is now forced and Black's king has no place to go. A stalemate draw.

Another game from the State Junior.

CHARLES GRIFFITHS

JOHN HARTMAN

1. P-K4	P-K3
2. P-Q4	P-Q4
3. N-QB3	N-KB3
4. B-KN5	B-K2
5. P-K5	KN-Q2
6. P-KR4	P-QN3
7. BxB	QxB
8. Q-N4	O-O
9. B-Q3	P-KB3
10 N-B3	P-KB4
11 Q-N5	QxQ
12 NxQ	N-QB3?
12----R-K1 was necessary.	
13 NxKP	R-B2
14 NxBP	R-N1
15 P-K6	R-B1
15----R-K2 "best".	
16 PxN	BxP
17 KNxQP	NxQP
18 O-O-O	B-B3
19 N-K7ch.	K-R1
20 B-B4	BxNP
21 R-R2	B-B6
22 P-R5	BxR
23 N-N6ch.	PxN
24 PxPch.	B-R4
25 RxB Mate.	

A game from the current Seattle Chess Club Tournament. (Second Round)

DAN WADE

TOM MAKENS

1. P-KN3	P-KN3
2. P-K4	P-Q4
3. B-N2	PxP
4. BxP	N-KB3
5. B-N2	P-B4
6. N-K2	QN-Q2
7. O-O	B-N2
8. P-Q4	PxP
9. NxP	O-O
10 N-QB3	P-QR3
11 R-K1	N-B4
12 B-K3	N-N5
13 N-N3	NxN
14 RPxN	NxB
15 RxN	P-K3?
16 R-Q3	Q-B2
17 R-R4	R-N1
18 R-QB4	Q-N3
19 R-Q6	Q-R2

20 R-Q8 B-B3
 21 RxRch. KxR
 22 Q-Q6ch. K-N2
 23 N-K4 P-QN4
 24 R-B7 Q-Q5
 25 NxN BxN

If instead 25----QxQ; 26 N-K8ch., K-B1; 27 MxQ, and Black must lose his bishop leaving only a lone rook against a rook, knight and a bishop.

26 R-R7 B-N2
 27 QxR BxB
 28 KxB Resigns.

When a 1484 rating smashes a so-called 2070 "hotshot" in a game like the following postal encounter, brother it's news! Smith plays like he has Zengalis at elbow. This was a free-lance affair so no points were lost.

KENNETH SMITH

DAN WADE

1. P-K4	N-KB3
2. P-K5	N-Q4
3. P-QB4	N-N3
4. P-Q4	P-Q3
5. P-B4	PxP
6. BPxP	P-K3
7. N-QB3	B-N5?
8. Q-N4	N-B3!?
9. N-B3	P-N3
10 B-KR6	Q-K2
11 P-QR3	BxNch.
12 PxB	N-Q2
13 B-K2	P-B4
14 PxP e.p.	NxBP
15 Q-KR4	N-KR4
16 B-KN5	Q-Q2
17 O-O	O-O
18 P-Q5	PxP
19 PxP	N-Q1
20 N-K5	RxRch.
21 RxR	Q-K1
22 B-K7	B-B4
23 RxB	PxR
24 BxN/R4	Resigns.

Black has only 24----Q-N4 or lose the queen after which follows 25 Q-N5ch., K-R1; 26 B-B6 Mate.

Another Gerald Moore Bird's Opening.

GERALD MOORE

G. A. CULLINS

1. P-KB4	P-Q4
2. N-KB3	N-KB3
3. P-QN3	P-K3
4. P-K3	B-K2
5. B-N2	N-Q2

Black prepares to answer B-Q3 with--

----N-B4 which is like exposing your king in bridge.

6. P-B4	O-O
7. N-B3	P-B4
A self-blocking move.	
8. B-Q3	PxP
9. PxP	P-QN3
10 Q-B2	B-N2
11 O-O-O	P-KR3
12 QR-B1	P-R3
13 P-N4	NxP
14 KR-N1	P-B4
15 P-K4	P-K4
16 P-KR3	KN-B3
17 PxKP	PxP
18 PxN	PxB
19 RxPch.	Resigns.

For if ----K-R1 there might follow 20 QxP, NxP; 21 Q-N6---

WALLA WALLA PEN. BOPS TRI-CITY 9½ -- 4½

On March 24th, a seven man group from Tri-City visited the Walla Walla Pen. and found the inmates must have been practicing. Anyway, the visitors came out on the short end of a 9½ -- 4½ score.

Tri-City made its best showing on board one where Hess won 1½-½. The 2nd game was called a draw because of lack of time. Tri-City usually has Warner play first board but he was away on a trip to Seattle.

TRI-CITY

WALLA WALLA PEN

K. William Hess	1½	R. W. Roy	½
H. F. Jensen	0	M. Jacobs	2
R. G. Spencer	1	D. A. Parker	1
B. Arbogast	1	Rod Erb	1
F. Cooper	1	T. Bousfield	1
R. Turner	0	Bill Astley	2
D. Warren	0	S. Anderson	2
	4½		9½

The fellows really enjoyed playing the games and are anxious to go back for revenge.

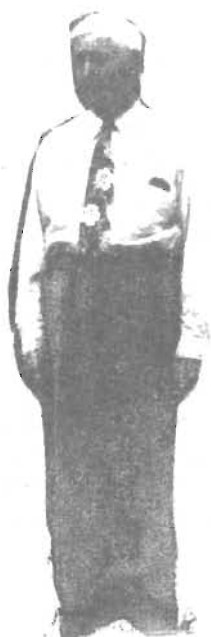
(Story by R. Spencer)

Filler Material : (From State Junior.)

CHARLES GRIFFITHS (White) vs. STAN SAY-YER (Black) 1. P-K4, N-KB3; 2. P-K5, N-Q4; 3. P-QB4, N-N3; 4. P-B5, N-Q4; 5. B-B4, P-K3; 6. N-QB3, NxN; 7. QPxN, BxP; 8. Q-N4, R-N1?; 9. B-Q3, P-KN3; 10 P-QN4 (Trying for a swindle), B-N3?? 11 B-KN5 and Black soon gives up!

INTRODUCTORY NOTES

The pictures on this page didn't turn out too well but those who are familiar with the Washington chess scene may detect a resemblance to some chess players in the Tacoma area. If they do, they are quite correct as we have pictured below from left to right DENNIS HAMILTON, LESLIE COUBROUGH, CHARLES HEWITT, C. CARLSON & VERNON HOLMES. Tacoma Chess Club has participated in every Puget Sound League campaign since the beginning eleven campaigns ago. Holmes, Hewitt and Coubrough have been three reasons for four titles and a one-third share in another. Missing out of the throne room only six times in eleven attempts isn't bad at all!



Dennis Hamilton is one of the juniors active in the club. There are not very many juniors in this club and the club's future one day will depend upon fellows like Hamilton. Dennis occasionally writes for the Wash. Chess Letter & the pages of the Letter have often been brightened by his cartoons.

Vernon Holmes is considered one of the best players in the northwest and has won the Tacoma City and Pierce County championships many times. In P. S. L. play it is a rare occasion, indeed, when an opponent of Holmes gets the better of it.

Charles Hewitt is a tough nut to crack chess-wise and has been so over all of the years he has participated. This year he had a bad start losing some very hard games early in the season but coming back strong in the last matches.

When you think of the Tacoma Chess Club it seems like you also think of Leslie Coubrough. For years Leslie could be found firmly entrenched on either second or third board on the Tacoma team ready, willing and able to give all comers competition of the finest caliber. Lately, Mr. Coubrough has played only sparingly in League play, confining much of his chess activity to postal chess. Leslie has in past years helped Washington in International matches and is a former Vice-President of the Washington Chess Federation.

It is unfortunate that such players as Holmes, Hewitt, Coubrough and Carlson have not participated in our big state tournaments. A suggestion - why not hold a Puget Sound Open in Tacoma sometime? If someone there rented a room and made the arrangements the next Puget Sound Open could be held there. The first Puget Sound Open way back years and years ago was held in Tacoma.

chess in idaho by vandenburger

The Idaho Chess Quarterly, the official publication of the Idaho Chess Association, has now expanded to 9 pages including annotated games. The Editor and Treasurer is DICK VANDENBURG, 913 N. 22nd St., Boise, Idaho. Their Games Editor is EUGENE L. COWAN, Box 431, Driggs, Idaho. He did a good job his first time out in this, the April issue. (One of the biggest shortages in the Washington Chess Letter is a games editor. The editor just does not have time to handle the job properly and get the rest of the job done too.)

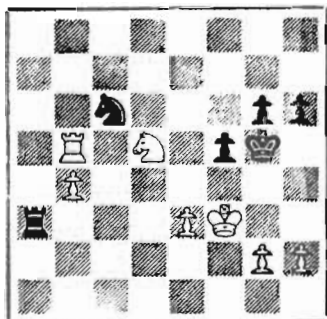
COMING EVENTS

Montana State Tournament. May 4th & 5th in Butte.

Utah - Idaho Match. June 1st and 2nd in Pocatello.

IDAHO STATE TOURNAMENT CUT UPS

The whole YICA almost collapsed when players took a look at the position in the HORTON THOMPSON vs. BOB CAMPBELL game, given below. Black to play and ?



Campbell was playing black so he played 37----, N-Q5ch. (what else?) Horton Thompson played 38 K-N3, so Campbell "put the game on ice?" with 38----, NxR? Then came the fantastic finish: 39 P-R4 ch., K-R4; 40 N-B6 mate! There must be a moral somewhere. Most of the prostrate "post-mortemers" decided the best move was 38----, P-B5ch. which does win.

BOISE 8. POCATELLO 6.

The two finalists in the State Team Tournament, Pocatello and Boise, played a very interesting and enjoyable match at Rupert. The Rupert Club played host to the event and really did a bang up job. Boise won the match, 8-6, but the issue was in doubt up to the very end when two key games turned for the victors. Boise now has custody of the traveling trophy and it will be up to all clubs to try and take it away next fall.

BOISE CHESS CLUB	8	POCATELLO CLUB	6
John Cosho	1*	Bryant Hansen	1*
Dick Vandenburg	1½	Mel Schubert	½
C. H. Stewart	2	R. K. Hart	0
Jim Bergen	1½	Paul Healy	½
Nick Skirmants	1	John Anderson	1
George Rasor	0	Charles Barnstein	2
Norman Lee	1	Guonter Koeler	1

* two draws.

BOISE CLUB NEWS

JOHN COSHO was elected President to succeed C. H. STEWART. GEORGE RASOR was elected Secretary-Treasurer to succeed DICK VANDENBURG.

A round-robin Boise City Tournament was held during the winter months. The Class A section ended in a three-way tie among JOHN COSHO, C. H. STEWART and DICK VANDENBURG, all scoring 7-2. The three entered a single round-robin playoff and it also ended in a tie! Another attempt has been started to break the deadlock.

The B section ended with JIM BERGEN winning with 5½-3½. Others were NICK SKIRMANTS 5-4, LOUIS COSHO 4½-4½, GEORGE RASOR 3½-5½ and NORMAN LEE 3-6.

RUPERT CLUB NEWS

DARRELL FREEMAN won the Rupert Club round-robin with a 9-1 score. Others were CHARLES FALK, 8½-1½; BOB CAMPBELL, 6-4; LARRY WALTON, 6-4; I. B. PATTIE, 5-5; CHARLES STEVENS, 5-5 and SAM OSGOOD, 5-5. Names of the other four players with their scores were not given.

Letters To Ye Ed

CLIFF DOLPH, curator of the Maryhill Museum of Fine Arts writes, "It seems to me WCL is improving right along, at any rate the March issue was greatly enjoyed. Liked several sections: Letters to Ye Ed, Nourse's reports, the Don Eilme's page, and curiously enough, since I do not get out to participate in the events, I follow with much interest the various tournaments so ably and breezily reported.

In a recent Chess Letter a mention of William Bills included a quip about Texas' oversized chess boards and the use there of bottles of bourbon for pawns. It gave me an idea for another rare, unusual and exotic chess set for our coming exhibition. This "Texas" set, as you may have doubtless surmised, will be an oversized board with a full complement of assorted fancy bottles (some such as are put out around Christmas), with light colored liquors on one side and dark on the other, an example being White Horse brand, etc. I plan contacting some Texas Chamber of Commerce for the makings - hoping too that if they send 'em the seals will be unbroken - it is just possible some one down there might go for the idea. It has occurred to me, too, that special rules of the game very likely prevail in Texas, that, for instance, all captured men must be immediately imbibed, regardless of the player's preference of brand, castling would require the aid of a corkscrew, etc. If there is such a thing as a Texan too shy to rise to this occasion, I may have to call on WCF members to save up appropriate "men." With luck, if we don't have to use empties, the closing night of the show will have an opening that should be a dilly."

JACK NOURSE writes, "It is very gratifying to hear the membership is growing, though it should when one considers quality of the Letter. Your new pictures, problems and such are wonderful. We are now in England. I tried once more to find a club in Paris but with no luck. The other day in London there was a match between teenagers and oldsters. Over 3000 participated with the oldsters winning.

On April 11th I leave for New York & probably will be in Seattle by late May. I will be pleased if you say "Hello" for me to all of my friends in Washington.

DICK PARSONS, AF 29017638, Box 1411, 6966 Sturon USAFSS, San Antonio, Texas - "I see in the April WCL where I missed Mr. Reshevsky's visit to the N. W. The club down here tried to raise \$100 to get him but were unable to. Seeing how the players up there took such good care of him, as far as winning goes, I'm sure he is ashamed to show his face!! The club down here has about 50 players which includes 2 or 3 experts but no masters. I visited them on their last meeting Thursday night and am going to go down again Sunday for the last time before leaving for Syracuse, N. Y. I hope to be able to stop at 1 or more of the large clubs in N. Y. while on my way to Syracuse. I won't have much in the way of time though, as I have to report in 8½ days after I leave San Antonio.

I am learning the rudiments of Russian and hope to be able to read my Russian chess books within a few months. In checking through my MCO 8th, I found a line on page 159 note (b) that ends, 13 N-B4, Q-N4! It looks to me like 14 N-Q6ch. will win for White. What do you think? Also, when looking at the Howard-Edberg postal game in the Jan. '57 WCL, I seem to find what looks like an oversight. On move 20, instead of P-QN3, wouldn't it have been better for White if he had played P-KN4? There must be some simple move I have overlooked, as both Bob & Fred wouldn't have missed such an obvious move.

20. P-KN4	P-N4 (c)(d)	21. (a) -	N-N2
21. QxPch.	K-R1 (a)	22. N-B6ch.	K-R1(b)
22. Q-Q2 wins.		23. Q-R6 wins.	
22. (b) -	K-B2	20. (e) -	PxP
23. NxP dis.ch.	wins.	21. BxP has little	bearing on the position.
20. (a) -	Q-N3	21. (e)	NxP
21. PxN	RxP (c)	22. P-N3 wins.	
22. QxP wins.			

(Looks like somebody goofed! Ed.)

I will drop you another line from N.Y. when I get there and try to tell you something about the clubs there if I get an opportunity to visit them.

If you get a card off, maybe you can tell me what happened to McCormick as far as his relations with the Seattle Club go.

Washington Chess Letter also received a letter from ROBERT KITTREDGE of Spokane. We wish to thank him for his efforts in getting new members.

DW



Science Editor



Little Ynch

LITTLE KNOWN DISCOVERIES IN SCIENCE

Fishing season is here again. You can be sure that Chess Letter's very own science editor will arouse hisself to even greater triumphs in the study of marine phenomena such as the Little Ynch, (which have a caudal peduncle resembling the pedestal base of a Staunton design chess knight).

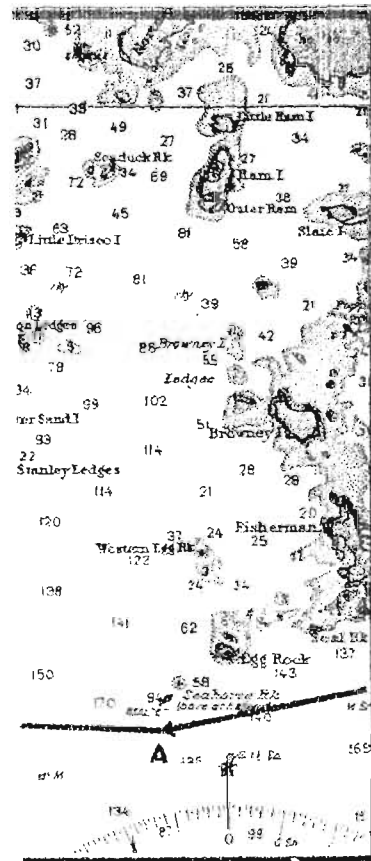
The scene of this year's study is shown at the right. It is West Sou'west of Egg Rock, where peculiar eddies have been reported by a Canadian. These here eddies are no doubt caused by millions of the descendents of the first Little Ynch which we captured that time when a chess player threw his queen knight overboard in disgust, and we caught the Ynch by mistake, in a Tom Collins glass tied to the end of a pole. We played it in the next game long enough for it to learn the move. Now they're all moving like chess knights, and causing eddies.

You can believe Canadians. Why, you know the highway that runs up and down the coast? We call it 99 here in Washington, and that is just about what it is. Down in California they call it 199, 299, and even 399, the way they exaggerate. Up in Canada they call it 7. Very conservative. We will investigate their rumor about Little Ynch, WSW of Egg Rk.

A little known facet of the character of a Little Ynch, is that although he is extremely voracious and will attack and swallow anything, he is afraid of his own shadow. This may not seem very important to a human, who figures that the Little Ynch is a marine type creature and sheltered from the sun, but we defy you to find even one Little Ynch in the waters of the tropical seas, over coral or white sand bottoms that would reflect a shadow.

That is why Puget Sound is his habitat, over igneous rock, magma, and glacial drift, yes Sir! That is why he will not swallow a halibut, say, on a sunny day, because even though he would then be stretched so thin he would be transparent, the halibut would throw a shadow and scare the Little Ynch into throwing up the halibut. On a sunny day a Little Ynch will always swim inside of a halibut, turn inside out, (so his digestive juices can work outwards). Who ever heard of a shadow inside of an inside out Ynch inside of a halibut?

The four subscribers who failed to renew their subscriptions to Chess Letter, last month, will never know what happened at Egg Rk.



CHESS TEST

What is thought to be the shortest game the mighty Alekhine ever lost in serious play, was played at Margate, 1937, against the then young and untried Paul Keres, who later became USSR champion.

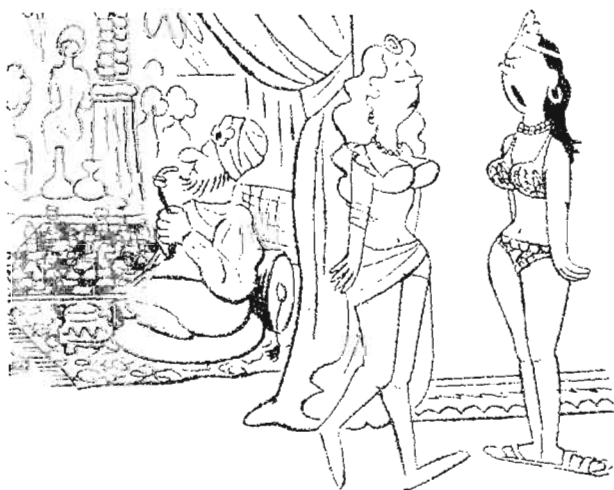
RUY LOPEZ - The opening moves: 1 P-K4, P-K4; 2 N-KB3, N-QB3; 3 B-N5, P-QR3; 4 B-R4, P-Q3; 5 P-B4,

COVER THE GAME SCORE, AND EXPOSE LINE BY LINE AS YOU SCORE YOUR POINTS--

5	...B-Q2	
6 N-B3	...P-KN3	3 POINTS
7 P-Q4	...B-N2	3 POINTS
8 B-K3	...N-B3	3 POINTS
9 PxP	...PxP	Correct is 8...PxP; 9 NxP, KN-K2 to castle. 4 POINTS
10 B-B5	...N-KR4	4 POINTS
11 N-Q5	...N-B5	3 POINTS
12 NxN	...PxN	3 POINTS
13 P-K5	...P-KN4	3 POINTS Not best. Score 4 for 13 O-O, Black could have gained equality with ...NxP
14 Q-Q5	...B-KB1	4 POINTS
15 BxB	...RxB	4 POINTS
16 O-O-O	...Q-K2	4 POINTS
17 BxN	...BxB	4 POINTS A precision move. If NxP, O-O-O! and Black threatens ...QxN or ..NxP or even 18 ...B-N5!
18 Q-Q3	...B-Q2	3 POINTS
19 NxP	...O-O-O	Black desperately needs to castle 4 POINTS
20 N-B3	...P-KB3	3 POINTS
21 PxP	...RxP	4 POINTS
22 KR-K1	...Q-N5	4 POINTS
23 QxBch	Resigns	4 POINTS

NOW ADD UP YOUR SCORE AND REFER TO THE RATING SCHEDULE:

50-65	MASTER
38-50	EXPERT
28-38	CLASS A
18-28	CLUB PLAYER





POSTAL CHESS

R.R. MERK 
POSTAL CHESS EDITOR
1026 E 71 SEATTLE 15

Postal chess readers are requested to be patient during a necessary delay in crediting or replying to cards and letters. Bob Merk will be at least two weeks recuperating from some bone surgery scheduled for April 24. The formation of new sections, adjudication, and all his correspondence is therefore halted temporarily until he can get back to his files.

A few more entries are needed to fill up new sections in both A and B Divisions, so please send in entries and reports as usual for later attention. The following games have been reported, in order, up to April 23.

F.M. Howard reports duplication that gave him 75 unearned points.

L.B. Ball withdrew from 56B--11A and B, after only 4 or 5 moves, to take a travelling job. The decision to replace him or award points will be for Bob Merk to make, as will decision regarding Mills-Hamilton in 56B8B.

56B1A	A. Edberg	1	Squire	0	25
56B9A	Gemar	1	Walsron	0	21
56A5B	Bever	1	Parker	0	39
56E10B	VanNatta	1	Lyberger	0	38
56B9A	Benson	1	Brooksnire	0	90
56B6A	Rogers	1	Skinner	0 (f)	32
56B3A	Lee	1	Squire	0	?
56B3B	Squire	1	Lee	0	?
56B1A	Edberg	½	Skoglund	½	25
56B8A	Spatz	1	Mills	0	47
55B A	Youngman	1	Roberts	0	67
56A4A	Weisscher	1	Weaver	0	50
56B11A	Spatz	1	Pierce	0	23

"B" Division

VanNatta	1458
Laine	1404
Merk	1396
Spatz	1343
Gordon	1262
Hamilton	1261
Lyberger	1258
McDonald	1252
Haynes	1238
Edberg, A.	1220
Rogers	1210
Youngman	1206
Mills	1201
Spencer	1185
Nichols	1149
Lee	1140
Raleigh	1134
Gemar	1121
Benson	1121
Tresidder	1108
Watson	1070
Ball	1050
Bennett	1050
Bowerman	1050
James	1050
Miller	1050
Scripps	1050
Pifley	1050
Pierce	1027
Skoglund	1023
Aldridge	1010
Skinner	964
Notter	920
Waldron	790
Adamson	781
Jacobson	710

"A" Division

Parsons	1765
Weisscher	1755
Bever	1697
Mage	1686
Kaffenberger	1682
Weaver	1656
Wade	1653
Coubrough	1644
Edberg, R.	1576
Parker	1507
Skarsten	1504
Luters	1472
Carter	1441
Dickson	1432
Husby	1422
Knapp	1403
Woodward	1400
Brookshire	1339
Phillips	1327
Howard	1322
Cairncross	1255

POSTAL CHESS

POSTAL CHESS IS A GOOD WAY TO IMPROVE YOUR GAME. You can take enough time to thoroughly study each move. You can enter against any strength of competition and game results will soon give your rating its proper value.

AN ADVANTAGE OF PLAYING NORTHWEST PLAYERS is that the games proceed smoothly with overnight mail delivery. Ratings are adjusted and published each month.

EACH PLAYER IN A FIVE-MAN SECTION PLAYS TWO GAMES WITH EACH OF THE OTHERS.

THE ENTRY IS 50¢. A 6-MONTH SUBSCRIPTION EXTENSION IS THE PRIZE.

COMPLETE RULES ARE SENT.

SEND ENTRY TO POSTAL EDITOR

Return postage guaranteed
Form 3547 requested.

WASHINGTON CHESS LETTER

1026 E. 7th St. SEATTLE, WASH.

SEATTLE, WASH. (174)

SEATTLE, WASH.



B.F. Strachan

5103 N.E. 15 Ave.

Portland 11, Ore

4/58