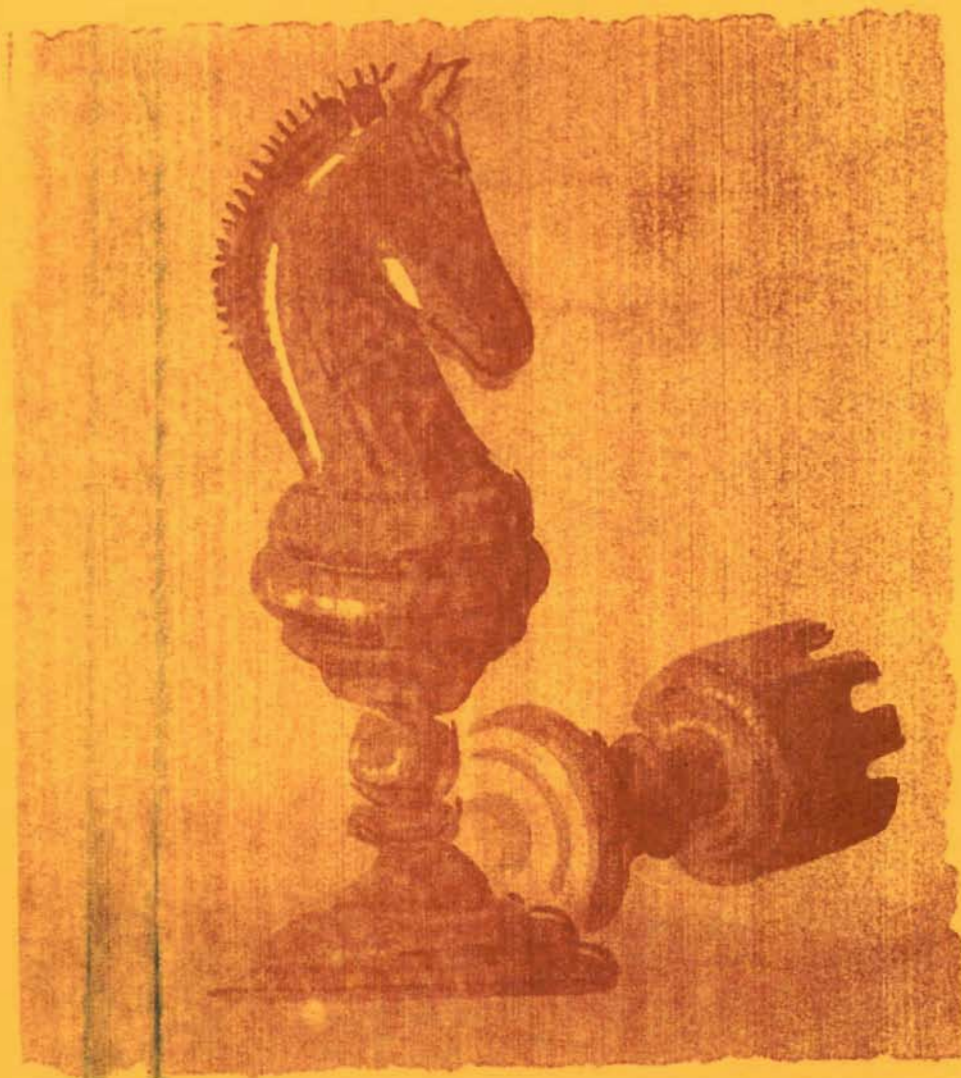


WASHINGTON

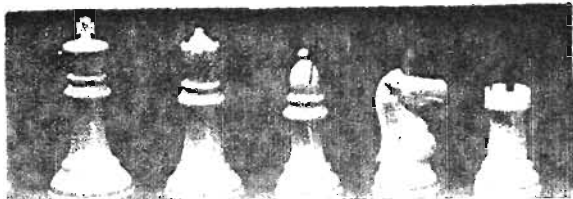
CHESS

LETTER

MARCH
1957



SUBSCRIPTION PRICE OF TWO DOLLARS A YEAR INCLUDES MEMBERSHIP IN THE W.C.F.



CHESS LETTER

OFFICIAL PUBLICATION OF THE
WASHINGTON CHESS FEDERATION
112th Issue

Editor D. E. Wade
11023 25th N. E. Seattle, Wash.

Circulation R. R. Merk
1026 E. 71st. Seattle, Wash.

Publisher F. H. Weaver
501 Olympic Place Seattle, Wash.

March Contributors: George Bishop, Don Eilmes, Gerald Moore, Dick Vandenburg, Dr. Griffith Parker.

OTHER W. C. F. OFFICERS

President Dr. Griffith H. Parker
416 Hyde Bldg. Spokane, Wash.

Vice-President Max Mage
2437 55th S. W. Seattle, Wash.

Secretary Peder Husby
Route One E. Stanwood, Wash.

Treasurer W. H. Raleigh
4312 Woodland Park Ave. Seattle, Wash.

Publicity Director Don Eilmes
1303 44th Ave. S. W. Seattle, Wash.

Tournament Director Robert Edberg
Route One Tieton, Wash.

Tournament Director James McCormick
11035 Beacon Ave. Seattle, Wash.

AFFILIATED W. C. F. CHESS CLUBS

Seattle, Spokane, Tacoma, West Seattle, McNeil, Kitsap, Tri-Cities and Boring.

ONE YEAR (12 ISSUES) AND MEMBERSHIP IN WASHINGTON CHESS FEDERATION IS \$2
SEND MONEY TO W.H. RALEIGH, 4312 WOODLAND PARK AVENUE, SEATTLE 3, WASH.

Well, we kept most of our promises for a "sizzly - juicy" issue but since we must rely on others to keep some of the promises, the North West Rating has to be delayed. Hope to have them next issue, but no promises! We do have the stories on the Puget Sound Open, Puget Sound League, Spokane Tourney and the Idaho Open. Plenty of games too, plus Don Eilme's Chess Around the World and Weaver's Solver's Contest. Also letters.

The object of the W. C. F. is only to promote the game of chess, no more. The Chess Letter, tournaments and matches are to promote chess. Unselfish men spend many hours of their time to make the "Letter", tournaments, etc. possible. No rewards are sought, but if a tournament, a match or an issue of the Chess Letter should do more harm to the game than good, then the labors of the workers for chess are in vain. So, it's up to the chess promoter and the chess player to see that they do nothing that would harm the game. Certainly, it is true the part-time amateurish work of our workers is open to criticism. Constructive criticism is welcomed but not heckling and sabotage. Our great need is for more members to offer service in aid to the chess community. They will gain as much as they give.

Let us be sportsmen and prove that it is false all really good players are so and so's. Let us not ape idols with clay feet we read about. It is much more important to be respected as a man than as a great chess player.

N. W. WASHINGTON NAMES

Names of some of the players left out last issue because of lack of space who hang out at the "Eagle's Roost Cafe" at Ferndale each Wednesday evening are as follows: JIM STEWART (Victoria), BOB BECK (Ferndale), H. CASE (Bellingham), F. A. BUTLER (Bellingham), DANNY CHIN (Bellingham), L. SHORTY CURRIT (Ferndale) and WALTER STARK (Ferndale). Also BOB NEALE (Bellingham) and DICK WAINRIGHT (Langley)

If the players of Northwest Washington have any news, send it in.

SEATTLE KEEPS P.S.L. TITLE

On Sunday, February 3rd Seattle defeated West Seattle $7\frac{1}{2}$ to $2\frac{1}{2}$ for its 4th P.S.L. match victory in as many attempts and only one week later on the 10th, the Seattle Chess Club won the championship with a $5\frac{1}{2}$ to $4\frac{1}{2}$ decision over Boeings.

In another February 10th match, the West Seattle team visited McNeil Island and defeated the islanders $8\frac{1}{2}$ to $1\frac{1}{2}$ in a non-league match.

PUGET SOUND LEAGUE STANDINGS

W L		W L	
Seattle C. C.	5-0	West Seattle C. C.	1-3
Tacoma C. C.	2-2	Boeings C. C.	1-4

March 3rd. Tacoma vs. West Seattle at the Seattle Chess Club. Seattle Chess Club at McNeil Island.

March 17th. Boeings versus West Seattle. Seattle C. C. at Tacoma.

March 31st. Tacoma at McNeil and Olympia vs. West Seattle at the Seattle Club.

In Seattle's win over West Seattle, JIM MCCORMICK, West Seattle's ace, did himself proud and scored 80% of his WS team's points in defeating State Champion ROBERT EDBERG 2-0. The only other score made by West Seattle was a draw on 5th board scored by F. M. HOWARD against DAVID ERICKSON in their second game. Howard was a bishop ahead in the end game - but found it impossible to queen a pawn and you can't win with just a bishop you know! TOM MAKENS and CHARLIE (dago)GRIFFITHS each scored 2-0 over their opponents to go along with a win scored in the first Erickson-Howard melee. DAN WADE & BEN WEISSCHER played their games on the following two Mondays with Wade winning a couple of tough ones raising the score to $7\frac{1}{2}$ to $2\frac{1}{2}$.

<u>SEATTLE C. C.</u>	<u>7$\frac{1}{2}$</u>	<u>WEST SEATTLE C.C.</u>	<u>2$\frac{1}{2}$</u>
Robert Edberg	0	Jim McCormick	2
Dan Wade	2	Ben Weisscher	0
Tom Makens	2	Max Mage	0
Charles Griffiths	2	Eugene Vukonich	0
David Erickson	1 $\frac{1}{2}$	Fred M. Howard	1 $\frac{1}{2}$

In the first half of the schedule, Seattle was at full strength and only won by $5\frac{1}{2}$ - $4\frac{1}{2}$ over Boeings. So with EDBERG in California for a tourney and ERICKSON unable to play, the Seattle chances of a repeat win over Boeings looked very slim.

However, CHARLES GRIFFITHS won two, HOWARD WEAVER won a game, TREMBOIS downed WADE, MAKENS and BADER drew and MARTIN FASS (spelled Faff by mistake last month) downed ALLAN MCGREGOR making the score $3\frac{1}{2}$ to $2\frac{1}{2}$ in Seattle's favor. Bader won for Boeings but McGregor matched that with a win for Seattle. Seattle had $4\frac{1}{2}$ points & Wade was two pieces and a passed RP up on Trembois. Gell didn't have time for another game with Weaver and wanted to know if it was all right to call their game a draw without play. If it was not satisfactory, Gell would have to forfeit. The Seattle captain, Wade, was agreeable but Bader, Boeing team captain, was not consulted although in the room at the time

The score was 5-4 in Seattle's favor and Wade, instead of advancing his passed pawn to an easy win, tried to mate Trembois's king with his two extra pieces and in the process lost a piece and his passed pawn and although still a piece ahead at the end, had to settle for a draw! The draw did win the match, however discomfiting it was to Wade.

<u>SEATTLE C. C.</u>	<u>5$\frac{1}{2}$</u>	<u>BOEINGS C. C.</u>	<u>4$\frac{1}{2}$</u>
Dan Wade	1 $\frac{1}{2}$	Jim Trembois	1 $\frac{1}{2}$
Tom Makens	1 $\frac{1}{2}$	Max Bader	1 $\frac{1}{2}$
Charles Griffiths	2	Don Eilmes	0
F. H. Weaver	1 $\frac{1}{2}$	John Gell	1 $\frac{1}{2}$
Allan McGregor	1	Martin Fass	1

Led by JIM MCCORMICK, West Seattle's team won by a wide margin, $8\frac{1}{2}$ - $1\frac{1}{2}$ over the McNeil Island team. UNGER scored all of McNeil's points while MCCORMICK, MAGE, VUKONICH and HOWARD gave their opponents a steady diet of goose eggs.

<u>WEST SEATTLE C. C.</u>	<u>8$\frac{1}{2}$</u>	<u>MCNEIL ISLAND</u>	<u>1$\frac{1}{2}$</u>
Jim McCormick	2	Dorame	0
Ben Weisscher	1 $\frac{1}{2}$	Unger	1 $\frac{1}{2}$
Max Mage	2	Sweezy	0
Eugene Vukonich	2	Ege	0
Fred M. Howard	1	Travis	0
Fred M. Howard	1	Pepper	0

DALBERGS WINS P. S. O.

SCORES 7-0

DAN WADE 2ND, WEAVER, MURRAY, NEXT

IVARS DALBERGS of Portland, Oregon is the new Puget Sound Open chess champ. Dalbergs won all seven of his games in the strong seventeen-player, seven-round Swiss held at the Seattle YMCA the weekend of Feb. 22-24. This is the second year in a row a Portland player has won this tournament, JIM SCHMITT, now of San Francisco, winning last year.

DAN WADE of Seattle took 2nd with 5-2 (4 wins, 1 loss and 2 drawn) and HOWARD WEAVER of Seattle and DR. A. MURRAY of Raymond took 3rd and 4th respectively each with $4\frac{1}{2}$ - $2\frac{1}{2}$. Weaver made 20.5 Median tie-breaking points to Murray's 17.

VIKTORSPUPOLS, HUGH NOLAND, JAMES MCCORMICK and JOHN GELL were the 5th, 6th, 7th and 8th place finishers all with 4-3.

DALBERGS, still young in years, has matured rapidly in his chess ability and in his string of victories kayoed some of Washington State's best in WADE, WEAVER, MAKENS, PUPOLS, LEININGER and NOLAND. The champ warmed up for the epic encounters to come by brushing away young DEL HUDSON in round one in only ten moves.

After five consecutive workmanlike, methodical wins, there was little doubt as to the outcome of the tourney as far as first place was concerned. After six rounds, it was all over but a champion likes to be convincing so a seventh win was chalked up.

Tournament features, round by round are as follows: Round One - NOLAND took MCCORMICK in the feature while two other strong contenders, DR. MURRAY and LEININGER, battled to a draw. WADE topped State Speed Demon CHARLES GRIFFITHS, PUPOLS downed BJORNSON, DALBERGS crushed HUDSON, WEAVER over HAKE, MORRIS drew EILMES and MAKENS took EDWARDS. GELL trampled bye. Round Two. LEININGER defeated HUDSON, MURRAY took EILMES in one of the best games, MCCORMICK took GRIFFITHS, WADE was defeated by DALBERGS, PUPOLS took MORRIS, WEAVER whipped GELL, HAKE downed BJORNSON, NOLAND, although the exchange ahead, had to settle for a

draw with MAKENS and EDWARDS got a bye.

Round Three on Saturday morning. PUPOLS won his third straight defeating DR. MURRAY, DALBERGS won his third, handing WEAVER his first loss, EILMES took HUDSON, WADE was in bad shape against NOLAND but suddenly turned the tables to win, MCCORMICK took GELL, EDWARDS downed HAKE, MAKENS topped LEININGER, GRIFFITHS won by forfeit from MORRIS and BJORNSON had the bye.

Round Four. Makens fell to Dalbergs, Eilmes drew Bjornson, Weaver played a beautiful game in defeating Pupols, Wade blitzed Edwards, Morris beat Hake, Murray drew with Noland, Leininger and McCormick played a draw, Griffiths beat Gell and Hudson had the bye.

Round Five. Morris could have mated Noland but missed it and lost, Leininger smothered Eilmes, Makens pulled a nice trap to sink McCormick in only 16 moves, Griffiths and Murray drew, Bjornson topped Edwards, Wade and Weaver drew a wild one where Wade was a piece ahead but Weaver had a swarm of pawns, Pupols lost to Dalbergs practically icing the tourney for Dalbergs, Gell beat Hudson, Hake getting the bye.

Main interest centered around the torrid struggle for second place after PUPOLS fell before DALBERGS in the fifth round. Going into the sixth round on the morning of the final day, WEAVER, MAKENS and WADE were deadlocked with $3\frac{1}{2}$ - $1\frac{1}{2}$ scores. Behind them were such worthies as PUPOLS, LEININGER and NOLAND with 3-2. In the next group with $2\frac{1}{2}$ - $2\frac{1}{2}$ were MCCORMICK, GRIFFITHS, BJORNSON and DR. MURRAY. The remaining six were EILMES, EDWARDS, GELL and HAKE with 2-3 and MORRIS $1\frac{1}{2}$ - $3\frac{1}{2}$ with HUDSON trailing with 1-4.

Actually for pairing purposes Pupols had $3\frac{1}{2}$ - $1\frac{1}{2}$ as his sure loss to Weaver had not been resigned. It was impossible to adjudicate because there was no mention of adjudication in the rules. A legal loophole that held up the tournament for an hour before starting round 6.

When the sixth round finally got underway Sunday morning - and you can be certain the next tournament will have a rule for any emergency! - DALBERGS played LEININGER as he had already defeated all three $3\frac{1}{2}$ - $1\frac{1}{2}$ players. WEAVER won over MAKENS in a hard one, WADE had a miserable opening against PUPOLS but had improved his position when the game was adjourned and called a draw for pairing in the final round. NOLAND boosted his way up to 4-2 and the right to face DALBERGS in the final round by quickly defeating GRIFFITHS.

In other games, MCCORMICK won over EILMES, DR. MURRAY beat BJORNSON, MORRIS won over EDWARDS and GELL was taken from his Sunday "morning" sleep to quickly defeat HAKE. HUDSON had dropped out.

Going into the last round, DALBERGS had 6-0 followed by WEAVER $4\frac{1}{2}$ - $1\frac{1}{2}$, WADE 4-2 (his game with PUPOLS being called drawn for pairing purposes), NOLAND also with 4-2, followed by DR. MURRAY, PUPOLS, MAKENS and MCCORMICK all with $3\frac{1}{2}$ - $2\frac{1}{2}$. All others had 3-3 or less and were out of contention for second place.

DR. MURRAY, getting better as the tourney progressed, played his best game in brilliantly downing WEAVER. This left both with $4\frac{1}{2}$ - $2\frac{1}{2}$ scores. PUPOLS and MCCORMICK played to a draw leaving them each with 4-3. MAKENS blundered and lost to WADE leaving MAKENS with $3\frac{1}{2}$ - $3\frac{1}{2}$ and WADE with 5-2 but with the unfinished game

with PUPOLS still to be played. DALBERGS downed NOLAND to keep his slate clean and push NOLAND down into the 4-3 class. GELL surprised all by upsetting LT. LEININGER, Washington Woodpusher Tourney Champion. This win was the third in a row for GELL and brought him up from a 1-3 score to a final 4-3 score up with the experts. Poor LEININGER, a strong contender throughout, slipped into the nether regions with a final 3-4 score. GRIFFITHS won his final game to break even. He had a miserable start, losing his opening two games. Other games found MORRIS drawing BJORNSON & EILMES downing EDWARDS.

All that was left was the PUPOLS vs. WADE adjourned game. After a terrific uphill battle, WADE finally gained a draw and took over a clear second place with a 5-2 score.

DALBERGS received the guaranteed \$25 first prize, WADE received a \$10 second prize and \$12 went for room rent. As 55 games were actually played, taking away Morris's forfeit to Griffiths, all five byes and Hudson's forfeiting his final two games, \$5.50 goes to the USCF at 10 cents per game for rating purposes. \$53.50 was collected in entry fees. The difference between the money collected and money disbursed is \$1, pocketed by Jim McCormick, who made the pairings.

GRIFFITHS, as the leading junior (18 and under) gets a \$5 prize awarded by a supporter of chess who doesn't wish to be named. Other juniors were BJORNSON, HAKE and HUDSON.

P. S. O. SUMMARY, SEATTLE FEB. 22-23-24.

Pos.	Name	-1-	-2-	-3-	-4-	-5-	-6-	-7-	Score	W	L	D	Median
1.	Ivars Dalbergs	W17	W2	W3	W9	W5	W11	W6	7 - 0	7	0	0	19.00
2.	Dan Wade	W10	L1	W6	W15	D3	D5	W9	5 - 2	4	1	2	19.00
3.	Howard Weaver	W16	W8	L1	W5	D2	W9	L4	$4\frac{1}{2}$ - $2\frac{1}{2}$	4	2	1	20.50
4.	Dr. A. A. Murray	D11	W12	L5	D6	D10	W14	W3	$4\frac{1}{2}$ - $2\frac{1}{2}$	3	1	3	17.00
5.	Viktors Pupols	W14	W13	W4	L3	L1	D2	D7	4 - 3	3	2	2	21.50
6.	Hugh Noland	W7	D9	L2	D4	W13	W10	L1	4 - 3	3	2	2	20.50
7.	James McCormick	L6	W10	W8	D11	L9	W12	D5	4 - 3	3	2	2	17.00
8.	John Gell	Bye	L3	L7	L10	W17	W16	W11	4 - 3	4	3	0	13.00
9.	Tom Makens	W15	D6	W11	L1	W7	L3	L2	$3\frac{1}{2}$ - $3\frac{1}{2}$	3	3	1	20.50
10.	Charles Griffiths	L2	L7	W13*	W8	D4	L6	W16	$3\frac{1}{2}$ - $3\frac{1}{2}$	3	3	1	19.50
11.	Lt. Eugene Leininger	D4	W17	L9	D7	W12	L1	L8	3 - 4	2	3	2	18.50
12.	Don Eilmes	D13	L4	W17	D14	L11	L7	W15	3 - 4	2	3	2	14.50
13.	Oliver S. Morris	D12	L5	L10*	W16	L6	W15	D14	3 - 4	2	3	2	14.00
14.	Dale Bjornson	L5	L16	Bye	D12	W15	L4	D13	3 - 4	2	3	2	13.50
15.	Dwight Edwards	L9	Bye	W16	L2	L14	L13	L12	2 - 5	2	5	0	14.00
16.	Gale Hake	L3	W14	L15	L13	Bye	L8	L10	2 - 5	2	5	0	14.00
17.	Del Hudson	L1	L11	L12	Bye	L8	FF	FF	1 - 6	1	6	0	9.50

* and FF denotes forfeited games.

TIE AT SPOKANE

by Dr. Parker

For the second time in its seven year history the Spokane City Chess tournament ended in a tie when ROBERT HIGGINSON and WILLIAM VOGET topped all of the rest with 5-1 scores. Following the custom established in the previous deadlock two years ago between SVENSSON and CORNELIUS, points ordinarily used for tie-breaking purposes will not be used to award the title. A two game match will be played between the two for the title in the near future.

While the twenty-six entries did not come near equaling the record of forty-two in 1955, they provided the most surprises and upsets of any tournament held in Spokane. At the start, CORNELIUS, the defending champion, was rated the favorite. KITTREDGE was rated the probable runner-up and HIGGINSON, VOGET, KROMER, BAILEY, DANIELS and PARKER were given outside chances to finish on top.

With the exception of Cornelius vs. Kittredge, the luck of the draw failed to pair any of the favorites in the first two rounds. Kittredge provided a mild upset, holding the champ to a draw. The other 6 favorites came through the opening pair of rounds untouched and found themselves paired in the third round.

The third round tilted the dope bucket but the fourth spilled the dope all over the floor of the tournament room.

MANSON, an unknown who had been defeated by Cornelius in first round, dumped Kittredge in the third and knocked over Dr. Parker in the fourth. Unfortunately, Manson failed to show up for the last pair of rounds as he would have finished near the top.

Kromer and Parker fought to a draw in the third before Kromer moved on to hand Cornelius a stunning defeat in the fourth. This loss left the ex-champion with only a slim hope of a possible tie for first.

HIGGINSON kept his string intact by beating BAILEY and VOGET and as the fifth round opened, led the field with a perfect 4-0 score.

Daniels saw his title chances dissipate with a third round loss to VOGET and a fourth round loss to THUNBERG.

Behind HIGGINSON after four rounds of play were KROMER $3\frac{1}{2}-\frac{1}{2}$, and VOGET, MANSON, BAILEY and MORGAN tied each with 3-1.

The fifth round paired life-long rivals HIGGINSON and KROMER. KROMER took the lead with $4\frac{1}{2}-\frac{1}{2}$, coming through in brilliant style over HIGGINSON. VOGET took care of BAILEY and MORGAN moved up the easy way as MANSON failed to appear. THUNBERG'S loss to KITTREDGE dropped him out of contention.

The final round found KROMER and VOGET paired with the former needing only a draw to be assured of at least a share of first place. However, VOGET was at his best and pulled off a surprise mate in 27 moves. HIGGINSON had no trouble with MORGAN and stepped into the final tie at 5-1 with VOGET.

CORNELIUS finished with a rush to tie KROMER at $4\frac{1}{2}-1\frac{1}{2}$ with late wins over PARKER and HARTMAN.

This tourney did more to stimulate interest in chess and in chess competition in Spokane than any other tourney held in that city. It definitely showed that the competition is becoming keener as the lesser players improve and that no one has a monopoly on the position as head man in Spokane chess.

CALKINS and AMDAHL deserve a vote of thanks and a pat on the back for a sporting gesture on their part. GEORGE PRIEBE was stricken by a hemorrhage during time between the fourth and last rounds. Priebe called Kittredge, the tournament director, and asked if it could be arranged so that he could play his last two games at home. Kittredge had no objections if Priebe's opponents were willing. CALKINS agreed to go to his house the night before the fifth round since the fifth round pairings were already known. When the pairings for the last round were announced at 9 o'clock, AMDAHL drove out and played his match. Both men could have claimed a forfeit but didn't.

SPOKANE CITY CHESS CHAMPIONSHIP

Place	Contestant	-1-	-2-	-3-	-4-	-5-	-6-	Score	W L D	Med.	Sol.	Coons
1.	Robert Higginson	W16	W10	W6	W2	L3	W8	5 - 1	5-1-0	15.5	23.5	
2.	William Voget	W13	W23	W7	L1	W6	W3	5 - 1	5-1-0	15.5	21.5	
3.	Ray Kromer	W19	W18	D11	W4	W1	L2	4½ - 1½	4-1-1	15.0	----	
4.	Gordon Cornelius	W12	D5	W18	L3	W11	W15	4½ - 1½	4-1-1	13.0	----	
5.	Robert Kittredge	W23	D4	L12	W13	W10	D9	4 - 2	3-1-2	12.5	----	
6.	William L. Bailey	W21	W20	L1	W19	L2	W10	4 - 2	4-2-0	12.0	----	
7.	Donald Daniels	W14	W22	L2	L10	W20	W13	4 - 2	4-2-0	11.0	18.0	
8.	Robert Morgan	L10	W25	W14	W20	W12*	L1	4 - 2	4-2-0	11.0	16.0	
9.	Heinz Schneider	W26	L11	L19	W18	W21	D5	3½ - 2½	3-2-1	9.5	----	
10.	Eric Thunberg	W8	L1	W22	W7	L5	L6	3 - 3	3-3-0	16.0	----	
11.	Dr. Griffith Parker	W15	W9	D3	L12	L4	D18	3 - 3	2-2-2	14.0	21.0	
12.	Henry Manson	L4	W17	W5	W11	L8*	FF	3 - 3	3-3-0	14.0	18.5	
13.	John Hill	L2	W24	W23	L5	W14	L7	3 - 3	3-3-0	12.0	18.0	2.6
14.	Jack Vhay	L7	W16	L8	W22	L13	W21	3 - 3	3-3-0	12.0	18.0	2.2
15.	John Hartman	L11	L21	W25	W17	W19	L4	3 - 3	3-3-0	10.0	----	
16.	George Priebe	L1	L14	W24	L21	W22	W20	3 - 3	3-3-0	9.0	----	
17.	Steve Stenersen	L18	L12	W26*	L15	W24*	W19	3 - 3	3-3-0	8.5	----	
18.	Gerald Lulham	W17	L3	L4	L9	W23	D11	2½ - 3½	2-3-1	14.0	----	
19.	Mike Conway	L3	W26*	W9	L6	L15	L17	2 - 4	2-4-0	13.5	----	
20.	Karl Amdahl	W25	L6	W21	L8	L7	L16	2 - 4	2-4-0	13.0	----	
21.	Jack Kelly	L6	W15	L20	W16	L9	L14	2 - 4	2-4-0	12.5	----	
22.	James Calkins	W24	L7	L10	L14	L16	W23	2 - 4	2-4-0	10.0	----	
23.	Mike Lulham	L5	L2	L13	W25	L18	L22	1 - 5	1-5-0	11.5	----	
24.	Robert Ullrich	L22	L13	L16	W26*	FF	FF	1 - 5	1-5-0	9.0	----	
25.	Donald Rose	L20	L8	L15	L23	FF	FF	0 - 6	0-6-0	----	----	
26.	Edgar Swank	L9	L19*	L17*	L24*	FF	FF	0 - 6	0-6-0	----	----	

* or FF denotes a forfeit.

INDIVIDUAL PUGET SOUND LEAGUE SCORES 2/26

Player	Board	W L D	Points	Left
C. Griffiths(S)	4	9-1-0	9	2
T. Makens (S)	3	5-1-4	7	2
R. Lougheed (T)	5	6-1-1	6½	4
D. Wade (S)	2	5-3-2	6	2
M. Bader (B)	2	5-4-1	5½	2
J. Trembois (B)	1	4-4-2	5	2
R. Edberg (S)	1	3-3-2	4	2
J. Gell (B)	5	3-3-2	4	2
D. Bilmes (B)	3	3-5-2	4	2
V. Pupols (T)	1	2-1-3	3½	4
J. McCormick(W)	1	3-1-0	3	4
V. Holmes (T)	2	3-1-0	3	4
D. Erickson (S)	5	2-2-2	3	2
M. Mage (W)	3	3-5-0	3	4
F. Howard (W)	5	1-4-3	2½	4
A. McGregor (S)	5	2-2-0	2	2
D. Hamilton (T)	5	2-1-1	2½	4
E. Vukonich (W)	4	2-4-0	2	4
C. Hewitt (T)	3	2-6-0	2	4
F. Weaver (S)	4	1-0-1	1½	2
F. Uriyu (B)	4	1-2-1	1½	2
I. Fass (B)	5	1-2-1	1½	2
S. Woodward (W)	5	1-2-1	1½	4
B. Weisscher (W)	2	1-4-1	1½	4

PUGET SOUND LEAGUE SCHEDULE AND RESULTS.

Seattle 7 West Seattle 3 At Seattle.
 Tacoma 7½ Boeings 2½ At Tacoma.
 Seattle 4 Olympia 4 * At Seattle.
 Tacoma 7½ West Seattle 2½ At Tacoma.
 Seattle 5½ Boeings 4½ At Seattle.
 Seattle 7 Tacoma 3 At Seattle.
 West Seattle 5½ Boeings 4½ At Seattle.
 Boeings 5½ Tacoma 4½ At Seattle.
 Seattle 7½ West Seattle 2½ At Seattle.
 Seattle 5½ Boeings 4½ At Seattle.
 West Seattle 8½ McNeil 1½ * At McNeil.
 Olympia-Tacoma postponed * At Tacoma.
 McNeil 9 Olympia 3 * At McNeil.
 (* non-league)
 March 3 - Tacoma vs. West Seattle at the
 Seattle C.C., Seattle at McNeil, Olympia
 vs. Boeings at the Seattle C.C.
 March 17 - Boeings vs. West Seattle at
 Seattle and Seattle at Tacoma.
 March 31 - Tacoma at McNeil and Olympia
 versus West Seattle at Seattle.

OTHERS: Coubrough 1-1, Leach 1-1, Carlson 1-3,
 D. Parsons 0-2, C. Hanson 0-4.

Compiled by D.W.

Letters To Ye Ed

From BENJAMIN KATZ, 45 Akiba Street in Haifa, Israel: Dear Mr. Wade, From the Official Blue Book and Encyclopedias of Chess by KENNETH HARKNESS I learned about the magazine WASHINGTON CHESS LETTER edited by you and I shall be very grateful to you for a sample copy of the January 1957 issue.

ROBERT KITTREDGE of E9618 Maringo Road in Spokane writes: Every once in a while in connection with my work as postal clerk, I come across copies of Chess Review and Chess Life going through the mail. Naturally, I notice to whom they are addressed. Don't know whether or not these names will be of use to you as possible future WCF members or not, but nevertheless, I'm passing them on to you. (Ten names were enclosed and we thank Bob for his help. Ed.)

Did MR. PARKER mention to you that he was reelected President of the Spokane Chess Club? DON DANIELS is Secretary and yours truly, ROBERT F. KITTREDGE, is Treasurer. (Did you say treasurer? Just the man we want to meet! Ye Ed.)

Our old buddy, GEORGE BISHOP, who hit his last chess jackpot in the Washington Open at Spokane recently, passes along some information: "A number of years ago when I visited San Francisco, the Mechanics Institute Chess Club was the only "full time" chess club in the area other than the Oakland Club. The Mechanics Club hovered around a 100 membership.

A short time ago they prevailed on Mr. ARTHUR B. STAMER to take charge.

Should you visit the club today at any time there will be an opponent for you. Come again on tournament nights and notice the quietness, lack of loud talk and buffoonery. Their membership is now crowding FOUR HUNDRED!

It seems to me that management is everything and I believe that this, more than anything else, is boosting the WCF and the "Letter".

DENNIS HAMILTON, 5429 So. Sheridan, Tacoma says: "Well, you guessed it, there wasn't any junior column copy for the February issue. Highline did get in touch with us though and negotiations are in the process of being made.

Centralia has gone deaf, dumb and blind as far as that supposedly pre-arranged match is concerned. Haven't heard from them since the first of the year.

LOUGHEED is in touch with JOACHIM and the Tacoma Club will probably meet Olympia in late March. LOUGHEED wants to play McNeil but the last we heard no high school students are allowed to participate against them. (Some have. Ed.)

Thirteen have entered the Pierce County Qualifying Tourney. The standings after the third of six rounds are as follows: HEWITT 3-0, LOUGHEED 3-0, HAMILTON 2-1, SOMSEN 2-1, STIMSON 2-1, SEYMOUR 2-1, LEACH 2-1, WOLOVER 1(byc)-2 PUPOLS 1-2 (2 forfeits), CARLSON 1-2, COUBROUGH 1(byc)-2, COOK 0-3, HANSON 0-3 (Coubrough and Hanson have each forfeited once.)

A 4-2 or even a $3\frac{1}{2}$ - $2\frac{1}{2}$ play probably will make the finals.

Just to confuse people who already have USCF, Northwest, Wade-Batting Average and Correspondence ratings to foul them up, here are the Tacoma Club standings to further 'integrate'. PUPOLS 933, HOLMES 918, HEWITT 822, COUBROUGH 733, SOMSEN 704, COLLINS 704, CARLSON 692, LOUGHEED 675, DOLLE 666, KIRCH 633, HAMILTON 615, LEACH 597, JAYNES 595, HANSON 561, SEYMOUR 541, COOK 502, ROHRER 446, J. M. WHEELER 441, WOLOVER 422 and J. L. WHEELER 411. Relatively inactive players and players just starting are not listed.

HORTON F. THOMPSON of Kendrick, Idaho, Queen City of the Seven Ridges says,

"Dear Dan, Had the pleasure of attending the recent Idaho Open. The upper classmen were rough on this freshman. KEN JONES of Reno, Nevada was high man with 5 wins and 1 loss. GLEN BUCKENDORFF was second at $4\frac{1}{2}$ - $1\frac{1}{2}$ and FRED BYRON third.

JONES beat BYRON and BYRON won over BUCKENDORFF. BUCKENDORFF beat JONES. Am enclosing moves of these three games. I thought you might like to see how these boys shove them around in Idaho. Best regards to all the girls in the editorial rooms. P. S. (I won two games)

Editor's Note: Girls? What girls?

DICK VANLEBURG of Idaho says: "I was happy to get your card. However regret that I cannot invite Washington men to Idaho tourney at this time. I will enter a motion at meeting to open tourney.

Chess In Idaho — Vandenburg

IDAHO OPEN SUMMARY, BOISE FEB. 15-17

1. K. R. Jones, Reno, Nevada	5 -1
2. Glen Buckendorf, Buhl, Idaho	4 $\frac{1}{2}$ -1 $\frac{1}{2}$
3. Fred Byron, Portland, Oregon	4 -2
4. C. H. Stewart, Boise, Idaho	4 -2
5. Dr. David Grocning, Caldwell, Idaho	4 -2
6. Dick Vandenburg, Boise, Idaho	4 -2
7. Lloyd Kimpton, Twin Falls, Idaho	3 $\frac{1}{2}$ -2 $\frac{1}{2}$
8. William F. Tabor, Reno, Nevada	3 -3
9. Bob Campbell, Rupert, Idaho	3 -3
10 R. A. Smith, Reno, Nevada	3 -3
11 Horton F. Thompson, Kendrick, Idaho	2 -4
12 Dean Blair, Buhl, Idaho	2 -4
13 John Cosho, Boise, Idaho	2 -4
14 Albert Harle, Boise, Idaho	2 -4
15 George Razor, Boise, Idaho	1 -5
16 Dorn Flowers, Rupert, Idaho	1 -5

Jones is "Open" champion while Buckendorf repeats as State Champion. Jones recently won the Utah State Tournament with W. Tabor second. Jones now has only the Nevada to win to annex the "triple crown" of the intermountain region - Utah, Nevada, Idaho.

Dick Vandenburg writes: "I haven't been a chess player too long and figure I did all right. I beat Bill Tabor with a prolonged attack after I had opened into a lost position. I lost only to Jones and Buckendorf & had a good game with Buckendorf, almost winning. When I get practiced up a little more I might consider coming up to Washington to get beat!

We decided to have two tournaments next year - an open and a closed. The closed is to be open only to Idaho players and will be a five round Saturday and Sunday affair with A and B classes. The open will be opened up to players from Washington, Oregon, Montana Wyoming, Nevada and Utah. Also to any California players receiving a special invitation. Also the open will be rated for the 1st time in history so that good players have an added incentive to come. Next year's open will probably be held in Boise in early part of March and it is hoped some of you Washington players will plan to come down for the tournament.

Bob Campbell of Rupert was elected the President of the Idaho State Chess Association for 1957. I was elected Editor of the Idaho Chess Quarterly and Committeemen elected were R. K. Hart of Pocatello, Roy Parker of Nampa and Sterling Vaughn of Twin Falls.

The next Quarterly will be out April.

HOW THEY PLAY CHESS IN IDAHO

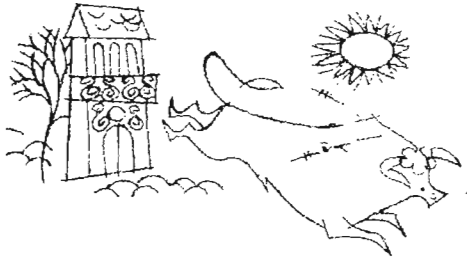
By H.F. Thompson

KEN R. JONES

GLEN BUCKENDORF

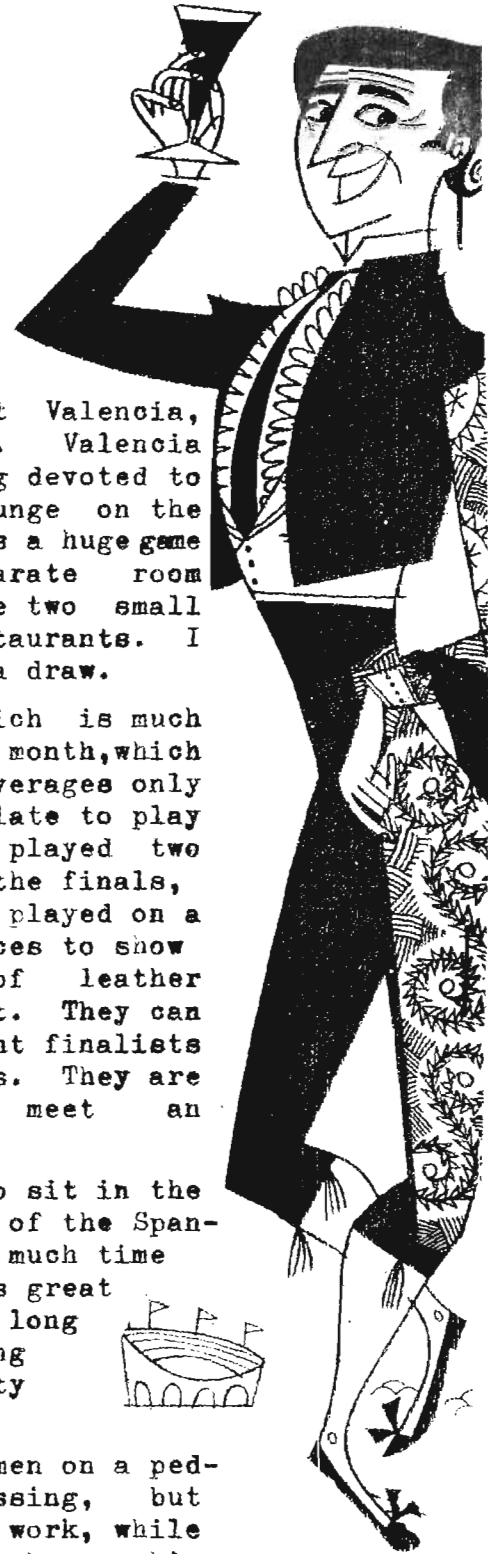
1. P-K4	P-QB4
2. N-KB3	N-QB3
3. P-Q4	PxP
4. NxP	N-KB3
5. N-QB3	P-KN3
6. B-K2	B-N2
7. B-K3	O-O
8. O-O	P-NR3
9. K-R1	P-Q4
10 N-N	PxN
11 PxP	PxP
12 P-KB4	P-K3
13 B-KB3	Q-B2
14 N-QR4	R-N1
15 P-QB3	B-Q2
16 R-QN1	B-N4
17 B-K2	N-K5
18 B-Q3	Q-B3
19 BxN	BxR
20 B-QB2	BxPch.
21 KxB	P-Q5dis.ch.
22 Q-B3	QxQch.
23 KxQ	PxB
24 KxP	KR-Q1
25 R-Q1	RxR
26 BxR	B-R3
27 K-K4	R-Q1
28 B-K2	P-R4
29 P-B4	P-B4ch.
30 K-B3	B-B1
31 P-QR3	R-Q5
32 N-B3	B-Q3
33 N-N5	RxPch.
34 K-K3	R-K5ch.
35 K-Q3	BxRP
36 P-B5	R-K4
37 P-N4	B-B5
38 B-B1	PxP
39 PxP	R-K8
40 B-N2	P-K4
41 B-Q5ch.	K-B1
42 P-B6	P-K5ch.
43 K-B2	K-K2
44 N-B3	K-K3
45 P-N5	R-B8ch.
46 K-N3	RxNch.
47 KxR	KxB
48 Resigns.	

Mr. Thompson may be remembered as a fixture at all three Inland Empire Opens in Spokane.



DON JOHN

IN SUNNY SPAIN



Dear Friends;

We took off for Malaga last Tuesday, stopping at Valencia, a few days in Granada, Alicante, and finally to Malaga. Valencia has a terrific club room. They have an entire building devoted to games and activities of all kinds. There is a vast lounge on the main floor where drinks are served. The next floor has a huge game room for dominoes, canasta, billiards, and a large separate room for chess. The club has 8,000 members. They even have two small theaters, and of course there are bars, baths, and restaurants. I played an ex champion who was slightly rusty, and got a draw.

In Malaga I have joined the Circulo Mercantil, which is much like the Valencia club, but older. The dues are 25¢ a month, which is in line with the fact that board and room for two averages only \$6 a day in class B hotels. I arrived a week too late to play in their tournament, which is just as well, as I played two games last night with a man who failed to qualify for the finals, and I couldn't do anything with him. The finals are played on a dais. Each table has a blackboard with cardboard pieces to show the progress of the game. Facing the dais are rows of leather davenportes where fans sit, smoke and drink, in comfort. They can see all four games without leaving their seats. The eight finalists are all young, half of them in their early twenties. They are all very pleasant and friendly, and very glad to meet an American.

The tourists here are apparently quite content to sit in the sun. One was expounding to me the great accomplishment of the Spanish in inventing the siesta. Unquestionably they have much time to sit and meditate. The Chinese have been regarded as great thinkers because they are able to sit in one place for long periods. This is facetiously described as contemplating one's navel. I like action, and if there is no activity I can usually stir some up.



Spaniards do not keep their women on a pedestal. They are great for hand kissing, but they let their women stay home and work, while they enjoy a man's world. If one takes his wife out it is usually to a cafe, where the sexes separate, and the men play cards, chess, or snoot dice. Believe me, Spanish men have it good. With an American wife I must admit that tact has to be used to find time to play chess or to go to football games.

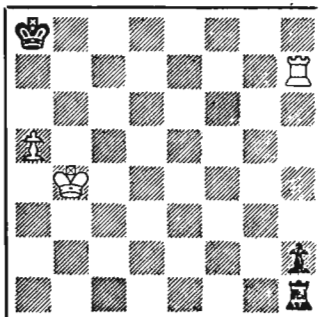
Give my regards to all,

JACK NOURSE

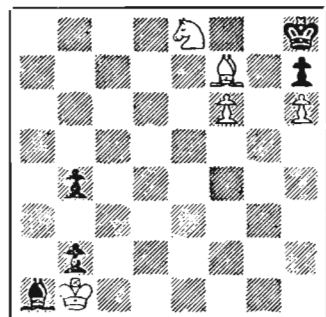


"If their circulation keeps going up, Homer, I swear I just can't go on."

SOLVERS' CONTEST



WHITE TO PLAY AND DRAW



WHITE MATES IN 5

Only one contestant recognized last month's endgame as being a famous brilliancy by Carlos Torre, in his game against Emanuel Lasker, Moscow, 1925. The actual game continuation is shown below. Other first moves such as QxP might only win the pawn, as there is no clear forcing continuation. However, we gave partial credit for good analysis along that line.

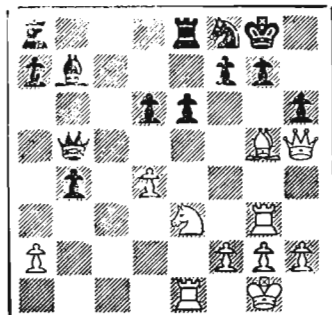
Two positions are shown this month, as selected by George Bishop who is now travelling throughout Southwestern states in his job with RCA. He still finds time to send interesting chess positions.

Three points each will be the point award for correct solutions.

The 5 leading solvers now are: Ballantine, Dolph, Spencer, Oldham, and Thompson.

Cliff Dolph, curator of the museum at Maryhill, Washington, is planning a chess exhibition next Fall that will display 30 unusual, rare, and exotic chess sets, some of which were pictured recently on the front cover of Life magazine.

Readers of Chess Letter should make an effort, while touring this Summer, to visit the Fine Arts Museum, located where Highway 97 crosses the Columbia River. Make yourself known to Mr. Dolph, who is an excellent chess player, and enjoys meeting other players.



SOLUTION: 1. B-B6!, QxO,
2 RXP, K-R; 3 RXP, K-N;
etc. to 7 R-N5, K-R2; 8 RXO,
K-N3; 9 R-R4, KXB; 10 RXP+

SEND SOLUTIONS TO F.H.WEAVER, 501 OLYMPIC PL. SEATTLE 99, BEFORE APRIL 1,

GAMES

By Wade

The 6th game of the McCormick versus Griffiths Match was Griffith's best.

C. GRIFFITHS

1. P-K4
2. N-KB3
3. P-Q4
4. B-QB4
5. O-O
6. N-B3
7. R-K1
8. P-QR4!
9. Q-K2
10. NxP
11. B-N3
12. P-KR3
13. P-B4
14. K-R1
15. B-Q2
16. Q-B4
17. NxB
18. P-K5!

If 18 P-B5? N-K4.

18. ----
19. Q-B1!
20. PxN
21. B-KB4
22. BxQ
23. RxR
24. B-KB4
25. B-N5
26. NxN
27. B-KB4
28. B-N3
29. B-B2

Black's blunder makes a hard win an easy one for White. Griffiths has come a long way since the Seafair last summer.

In the following contest, MAX BADER adds to CHARLES HEWITT'S overflowing cup of woe in the Puget Sound League match between Boeings and Tacoma.

M. BADER

1. P-Q4
2. N-KB3
3. P-QB4
4. N-QB3
5. P-K3
6. PxP

J. MCCORMICK

- P-K4
- P-Q3
- N-Q2
- P-QB3
- B-K2
- KN-B3
- O-O
- Q-B2
- PxP
- N-K4
- N-N3
- R-K1
- B-B1
- B-Q2
- P-QR3
- B-K3
- RxN
-

- P-Q4
- NxP/K4
- RxP
- RxR
- RxQch.
- R-K1
- B-B4
- N-K5
- RxN
- P-B3
- R-K6?
- Resigns.

7. B-Q3
8. P-QR3
9. P-R3
10. O-O
11. P-QN4
12. N-QR4!
13. N-B5
14. B-N2
15. R-B1
16. N-K5
17. P-B4
18. P-N4!
19. P-B5
20. PxP
21. R-QB2
22. R-N2
23. QxB
24. N/K5-Q7!
25. NxR
26. PxP
27. R-B4
28. NxN
29. RxR
30. Q-B4
31. Q-B5
32. NPxQ
33. P-Q5
34. BxN
35. P-B6
36. PxP
37. R-QB2

- N-B3
- B-N5
- B-Q2
- P-QR3
- R-QB1
- O-O
- Q-B2
- N-R2
- Q-N3
- B-B3
- P-K3
- R-B2
- KPxP
- R-K2
- B-N4
- BxB
- N-K5
- Q-Q3
- KxN
- PxP
- P-B4
- RxN
- QPxR
- N-B3
- QxQ
- K-B2
- N-K4
- BxB
- PxP
- K-B3
-

R-Q2 would have been better blocking the Black king away from the passed pawn.

37. ----
38. K-B2
39. R-B5
40. P-QR4
41. PxP
42. R-KR5
43. K-N2
44. KxP
45. K-N4
46. R-QN5

This game shows the effectiveness of well placed knights.

JIM TREMBOIS falls into a trap in a P.S.L. scuffle with BOB EDBERG.

J. TREMBOIS

1. P-K4
2. P-QB3
3. P-Q4
4. N-B3
5. P-K5
6. PxP
7. B-QN5
8. B-R4
9. O-O

R. EDBERG

- P-QB4
- N-QB3
- P-K3
- P-Q4
- PxP
- P-B3
- P-QR3
- B-Q2
- P-QN4

10 B-N3	Q-B2
11 R-K1	PxP
12 NxP	N-B3
13 B-N5	B-K2
14 BxN	BxB
15 Q-R5ch.	P-N3
16 NxP	PxN
17 QxPch.	K-K2
18 P-N3	NxP
19 BxP	B-B3
20 N-B3	N-B6ch.
21 BxN	BxB
22 R-K3	Q-B3
23 R/1-K1??	RxP!
24 Resigns.	

An obvious but none-the-less interesting sacrifice to which there is no reply.

DR. FRANK URIYU of Boeings wins an interesting game from ROYAL LEACH in the first Tacoma-Boeings P. S. L. Match.

F. URIYU

R. LEACH

1. P-K4	P-K4
2. N-QB3	N-QB3
3. N-B3	N-B3
4. B-N5	P-QR3
5. BxN	NPxB
6. NxP	Q-K2
7. P-Q4	NxP
8. NxN	P-Q3
9. O-O	PxN
10 R-K1	P-KB4
11 B-N5	Q-B2
12 N-B3	P-K5
13 P-KB3	Q-R4
14 B-B4	B-Q3
15 BxB	PxB
16 P-Q5	O-O
17 PxBP	R-B3
18 N-Q5	R-R3
19 P-KR3	PxBP
20 N-K7ch.	K-R1
21 QxBP	QxQ
22 PxQ	RxP
23 QR-Q1	RxP??

Black should play R-R3.

24 RxP Black loses.

Black's bishop cannot escape and the rook must go to stop the advanced QBP. If Black had played 23---R-R3; 24 NxB,RxN;25 P-B7, K-N1; 26 R-K7, R-B3; 27 R-Q7, P-R3 ; 28 R-Q8ch., R-B1; 29 R-Q7, R-B3!; 30 R-Q3, K-R2; 31 R-N3, R-K3; 32 R-B3; R-B3; 33 R-Q8, (Black loses) or 32---R/3-K1; 33 RxP and Black loses. The position is one that gives White a choice of several attacking moves and if one choice fails he loses nothing and tries another method until victory rewards his attempts. Black has nothing.

From a simultaneous exhibition.

G. MOLTANOWSKI

W. BILLS

1. P-Q4	N-KB3
2. N-KB3	P-K3
3. P-K3	P-QN3
4. QN-Q2	B-N2
5. B-Q3	P-B4
6. P-B3	Q-B2
7. O-O	B-K2
8. P-K4	P-Q3
9. Q-K2	QN-Q2
10 P-QR3	O-O
11 P-QN4	KR-K1
12 B-N2	N-B1
13 KR-K1	N-N3
14 P-N3	P-QR3
15 P-B4	P-K4
16 P-Q5	QB-B1
17 N-B1	R-B1
18 N-K3	N-N5
19 N-B5	N-R1
20 P-R3	N-B3
21 K-R2	N-K1
22 QR-Q1	P-B3
23 N/3-R4	N-B2
24 P-B4	K-R1
25 Q-R5	K-N1
26 QB-B1	N-R1
27 NxBch.	QxN
28 P-B5	Q-KB2
29 QxQch.	RxQ
30 B-K3	R-N2
31 R-QN1	R/1-N1
32 R-K2	N-B2
33 N-B3	B-Q2
34 R/2-QN2	N-Q1
35 P-N4	K-B2
36 P-KR4	N-B2
37 K-N3	K-N1
38 P-KN5	N-K1
39 P-R5	PxQNP
40 RPxP	P-R4
41 P-N5	R-B2
42 R-N2	PxP
43 NxNP	N-KB3
44 R-KR1	R/2-N2
45 K-B2	B-K1
46 P-R6	K-R1
47 N-K6	N-R4
48 NxP	NxN
49 R/1-KN1	R-KB2
50 RxN	R-KB1
51 B-N5	B-N3
52 K-K3	Resigns.

Played by our once-upon-a-time Washington State Champion who now resides back in Texas where they use oversized boards with bottles of bourbon for pawns.

Gerald Moore of Billings, Montana cut quite a swath in correspondence chess not so many years ago. Much of his success is due to the discovery that in the Bird's Opening the defense 1---P-Q4 gives Black a somewhat inferior game, providing White's skill is great enough to handle the treacherous positions involved. (MCO should not be trusted in this opening.)

We have a few games from Mr. Moore on this opening, the first of which we present here. All notes are by Gerald Moore.

GERALD MOORE

CARL WEBBERG

- | | |
|----------|-------|
| 1. P-KB4 | P-Q4 |
| 2. N-KB3 | N-KB3 |
| 3. P-B4 | P-K3 |
| 4. P-K3 | B-K2 |
| 5. P-QN3 | P-QN3 |
| 6. B-N2 | B-N2 |
| 7. N-B3 | QN-Q2 |
| 8. PxP? | ---- |

P-Q4 is better. This crosses up the strategy on which White's opening play is based.

- | | |
|----------|-------|
| 8. ---- | PxP |
| 9. B-K2 | O-O |
| 10 O-O | P-B4 |
| 11 Q-B2 | R-B1 |
| 12 N-Q1 | N-K5 |
| 13 N-B2 | QN-B3 |
| 14 P-Q3? | NxN |
| 15 N-K5 | P-Q5 |
| 16 RxN | PxP |
| 17 KR-B1 | N-Q4 |

White has flubbed away a pawn and the attack. Worse, his own weak pawns forbid a determined mid-game effort to recoup the pawn. So White seems bound to bide his own time even until the transitional stage betwixt mid-game and ending---BUT--- Black guards his sharp but weak advanced pawn--- which cedes to White the initiative--which is compensation for the pawn!

- | | |
|------------|--------|
| 18 P-QK3 | P-B3? |
| 19 N-B3 | NxP |
| 20 Q-B4ch. | N-Q4 |
| 21 N-R4 | P-QR3? |

Sound asleep. He could yet disgorge & live by 21---P-B4; 22 NxP, B-KB3; 23 BxP, QxB; 24 QR-K1, Q-K3; 25 B-N4 and White recovers his pawn.

- | | |
|---------|------|
| 22 B-N4 | R-B3 |
|---------|------|

The threat was 23 B-K6ch., K-R1; 24 N-N6ch., PxN; 25 Q-KR4 mate.

- | | |
|---------|------|
| 23 Q-K4 | B-B1 |
| 24 BxB | RxB |
| 25 R-B5 | N-B2 |
| 26 R-R5 | P-R3 |

- | | |
|--|----------|
| 27 Q-KN4 | K-R2 |
| White announced mate in five, the pattern being: | |
| 28 Q-N6ch. | K-R1 |
| 29 N-B5 | N-K3 |
| 30 NxRP | say Q-K1 |
| 31 N-B7 dbl.ch. | K-N1 |
| 32 R-R8 mate. | |

OLYMPIA CLUB LOSES MATCH TO MCNEIL 9 to 3.

Charles Joachim led his mates into a lion's den at McNeil and lost to the inmate "lions" by a 9 to 3 knockout count. Joachim waxed his opponent, Unger, twice but his men fared not so well, picking up only one win in the other ten games played.

<u>OLYMPIA C. C.</u>	<u>3.</u>	<u>MCNEIL ISLAND C. C.</u>	<u>9.</u>
Charles Joachim	2	Unger	0
Harry Parmalee	0	Sweezy	2
John MacKinsey	0	Dorame	2
Tveolen	0	Baehn	2
Phil Styman	1	Pepper	1
D. Hanon	0	Berry	2

Styman managed to break the win drought when he cooled off Pepper in their 2nd game.

WHERE TO PLAY CHESS !

SEATTLE CHESS CLUB In the Central YMCA room 604 at 4th & Madison. Open daily afternoons, evenings.

SPokane CHESS CLUB Meets Thursday evenings at the Desert Hotel.

TACOMA CHESS CLUB Meets on Friday evenings at the downtown library.

YAKIMA CHESS CLUB Meets at the Yakima YMCA on Mondays at 7 p. m.

TRI-CITY CHESS CLUB (Richland, Kennebec & Pasco) meets every Thursday 7 p.m. to 9:30, at the Richland Community Hall on Geo. Washington Way.

WALLA WALLA VALLEY CHESS CLUB Meets Friday evenings at 7:30 in the Walla Walla YMCA.

OLYMPIA CHESS CLUB Meets every Monday evening at 7:30 in the Community Center.

WEST SEATTLE CHESS CLUB Meets on the second and fourth Friday evenings at the High Point Recreation Center.

BELLEVUE C. C. Contact Mr. Bever, Gib. 3636

BOEING TOURNAMENT

In the recent tournament held in the Boeing Engineering Department, Jim Trembois emerged victorious. There were 16 contestants, and play was conducted during the rest periods. Due to time limitations this tournament was unsuited for the Swiss system, therefore, it was an elimination tournament, with eight players going on to the finals. Only two contestants went into the finals with an unbeaten record, Robert Walker, and Paul Lorenz. Walker lost his first game in the finals to Walt McDonald, which was an upset, while Paul Lorenz lost his finals game to Don Eilmes. Charles Ralston, who defeated Trembois in the preliminaries, finished third, after losing a very close game to Eilmes in the next to last round. Ralston had lost to Walker in the preliminaries. Eilmes, who finished second, lost his preliminary game to Trembois, then went undefeated to the finals, where he also lost only to Trembois. Fourth place went to Lorenz. Other finalists were Walt McDonald, Coe Westcott, Walker, and Flanagan.

INTRODUCTORY NOTES

Sgt. Robert Karch considers Tacoma as his home town, but it is seldom during the course of his military career that he gets to visit there. Karch is an indefatigable promoter of chess wherever he goes. He is chess champion of Fort Benning, Ga., among other honors. During his brief stay in Seattle recently, he did research, and made notes from which to compile a Northwest Rating List, which will be published in Chess Letter every few months to reflect the changes in standings between publication of the USCF annual list.

Alan Baron has dominated postal chess in the Northwest for several years. Recently, the demands of his postgraduate work in psychology at the University of Oregon has forced him to withdraw.

Ken Brookshire, Baron's roommate at Eugene, is also engaged in pursuit of a Master's degree. He has progressed rapidly from Class B in the standings to a high position in Class A.




Sgt. Karch



Alan Baron



Ken Brookshire

CHESSE AROUND THE WORLD
BY DON  EILMES

THIRD NORTH CENTRAL OPEN

Albert Sandrin, of Chicago, won the Third North Central Open, barely ahead of John Tums, both scoring 6-1. Sandrin lost to John Penquite, who also defeated Tums. There were 106 players entered.

HERMAN STEINER MEMORIAL MASTER TOURNAMENT

Dr. Peter Lapiken defended his lead by defeating Robert Moore in the 5th round. He has recorded 4 wins and a draw for a $4\frac{1}{2}$ - $\frac{1}{2}$ score. Dr. Lapiken earned his master rating for his good showing in the 1955 United States Open, at Long Beach.

Saul Yarmak is in 2nd place with $3\frac{1}{2}$ - $1\frac{1}{2}$. He drew in the 3rd round with Robert Brieger, formerly of Seattle.

Close behind are Irving Rivise and Sven Almgren, who are tied at 3-1, having adjourned their game.

THE ANNUAL HOLLAND TOURNAMENT

Beverwijk, Holland, like Hastings in England, has been the scene of an annual chess tournament for many years. In the Dutch event, this year's winner was the Yugoslav, Alexander Matanovich who led Stahlberg, of Sweden, by $\frac{1}{2}$ point. Next came Donner, with $5\frac{1}{2}$ - $4\frac{1}{2}$. The champion of Belgium, Alberic O'Kelley de Galway, and the Spanish amateur, Roman Toran, followed with $4\frac{1}{2}$ - $5\frac{1}{2}$.

BELL POSTAL CHESSE

Bell Telephone Company has been sponsoring inter company postal chess events since the early 1940's. The sections are organized into several different classes. The last two championship tournaments have been won by a woman, Mrs. Morrissey, who has just suffered her first loss to E. Lauve, who shared first prize in the latest tournament.

SPANISH TOURNAMENT

The Spanish Championship was held in Barcelona, and appropriately the title was won by one of the Catalan representatives, Jaime Llado, with a score of $10\frac{1}{2}$ - $3\frac{1}{2}$. Arturo Pomar, who also scored 10 - $3\frac{1}{2}$, finished 2nd. The 1955 champion, Diez del Corral, finished 3rd with 10 - 4 .

STUDENT TEAM

A strong United States student team is being organized for the World Students Team Championship, which will be held at Reykjavik, Iceland, beginning July 15. The following masters, their ratings adjusted to the list that will be published this Spring, have already been selected for the team, Robert Cross, 2310, Arthur Feuerstein, 2276, William Lombardy, 2407, Edmar Mednis, 2387, Anthony Saily, 2363. A sixth place position is still unfilled, and will be filled from applications by qualified students not over 30, who may apply to William Lombardy, team coordinator, 961 Faile St., Bronx 59, New York.

WASHINGTON

STATE

JUNIOR

5

ROUNDS
OF
SWISS

SATURDAY, APRIL

13TH AT 9 A.M.

IN THE SEATTLE CHESS
CLUB

ENTRY FEE \$2. MONETARY & BOOK PRIZES

THE AGE LIMIT- UNDER 21

AFTER A TOTAL ELAPSED TIME OF $2\frac{1}{2}$ HOURS, ALL

GAMES WILL BE ADJUDICATED

THE MEDIAN TIE-BREAKING SYSTEM WILL

BE USED

SEATTLE CHESS CLUB QUARTERS ARE IN ROOM 604 OF THE Y. M. C. A.

AS PARTNER YOU HAVE
 SZABO AGAINST BOOK
 (PRONOUNCED "BOURKE")

TEST

COVER THE GAME SCORE
 EXPOSE LINE BY LINE
 AS YOU SCORE POINTS

CATALAN SYSTEM The opening moves: 1 N-KB3, P-Q4; 2 P-KN3, N-KB3; 3 B-N2, P-K3; 4 O-O, B-K2;

This is actually a King's Indian, with the colors reversed. White tried to withhold P-QB4, or P-Q4, or both until Black had committed himself to a formation permitting White to transpose into a variant of the Queen's Gambit, an Indian Defence, the English Opening, the Dutch, or even an "Inverted" or "Reversed" Indian, that is White playing an Indian Defence with a move in hand. For White to choose the Catalan, Black's "consent" by ... P-K3; was essential. Now start scoring your points.

- 5 P-B4 4 POINTS
O-O
- 6 P-Q4 3 POINTS
P-B3
- 7 N-B3 3 POINTS
P-QN3
- 8 N-K5 5 POINTS
B-R3
- 9 PxP 3 POINTS
BPxP
- 10 B-B4 4 POINTS
KN-Q2
- 11 R-B1 5 POINTS
NxN
- 12 BxN 3 POINTS
P-QN4
- 13 P-K4 7 POINTS
- 14 N-K2 3 POINTS
Q-R4
- 15 PxP 5 POINTS
PxP
- 16 N-B4 7 POINTS
BxR
- 17 Q-N4 8 POINTS
P-N3
- 18 BxP 5 POINTS
B-Q6
- 19 BxR 5 POINTS
B-KB4
- 20 Q-K2 4 POINTS
B-N4
- 21 P-KR4 5 POINTS
BxN
- 22 BxB 3 POINTS
N-Q2
- 23 B-B3 4 POINTS
B-K3
- 24 B-Q6 6 POINTS

MASTER	67-92
EXPERT	47-67
CLASS A	32-47
CLASS B	20-32

Decisively opening up the lines of attack.

The point of the combination, a la Alekhine!
 The only defense. After 17 ...P-B3; 18 BxPch, K-R1 19 N-N6ch leads to mate.

Black must drop the Rook (QR1) because he has to avoid the mate (KR1)

Black resigns, because after 24...R-K1, 25 P-Q5 wins a piece.

NOW COUNT UP YOUR SCORE AND REFER TO THE TABLE ABOVE TO SEE HOW GOOD YOU ARE



POSTAL CHESS

R.R. MERK
POSTAL CHESS EDITOR
1026 E 71 SEATTLE 15

				POINTS	
2/4	56B-3B	Lee	1	Youngman	0 52
2/5	56A4B	Weaver	1	Coubrough	0 62
2/6	56B8B	Spatz	1	Watson	0 28
	56A3B	Parsons	1	Bever	0 54
2/7	56B8B	Mills	1	Spatz	0 74
2/10	56A2A	Weaver	½	Mage	½ 6
2/11	56B1B	Squire	1	Skoglund	0 52
2/12	56A3A	Bever	1	Husby	0 10
	56A5A	Husby	1	Bever	0 90
	56B8A	Mills	1	Hamilton	0 64
2/14	56A3B	Husby	1	Cairncross	0 52
	56B9A	Gemar	1	Benson	0 50
2/15	55ch2B	Weisscher	1	Baron	0 54
	56A1A	Edberg, R.	1	Baron	0 70
	56A1A	Wade	1	Baron	0 53
	56A1B	Howard	1	Baron	0 75
	56A1B	Edberg, R.	1	Baron	0 70
	56A2A	Mage	1	Skarston	0 48
	56A2B	Mage	1	Skarston	0 48
2/18	56A4B	Coubrough	½	Weisscher	½ 10
2/23	56A2B	Coubrough	1	Dickson	0 34
2/25	56B9A	Benson	1	Waldron	0 36
2/28	56A2B	Weaver	½	Mage	½ 14

Unfortunately, Baron has found it necessary to resign all of his unfinished games due to pressure of his work, at the University of Oregon, resulting in his toppling to the bottom of the list. We all know that if he had finished these games the result would have been very different. We regret that he found it necessary to drop out and hope that it is only temporary and that he will be back in our postal chess sections again to regain his former position in the lead. We wish him the best of success in his work at the university.

There are a lot of changes in the A division resulting in Mage being the leader with Parsons a close second.

The B division also has a new leader in Laine, closely followed 1 point behind by Spatz. Merk, Hamilton and McDonald are hoping to overtake them. The newcomer Mills is giving them all a close race.

Occasionally we receive notice of a game completion without reference to the complete section number. Usually we can determine what section it is but it does make extra work to try to figure it out, and sometimes it is not possible if both games in a section for the particular pair of players have not been completed. So please report complete section numbers when advising us of completion of a game.

We are glad to have word that Lyberger is now able to resume his games after a trip to the hospital for surgery, from which he is recovering nicely.

Parsons writes from Texas that his basic training will be completed the 10th of March, after which he will have a new assignment.

Your postal director thanks all who sent cards during his recent illness.

The telephone chess tournaments are going in great style. Several new players have started since the notice of last month. For full information telephone to Mr. V.W. Bever, at Gibson 3636. Results of the first round will appear next month.

POSTAL CHESS

POSTAL CHESS IS A GOOD WAY TO IMPROVE YOUR GAME. You can take enough time to thoroughly study each move. You can enter against any strength of competition and game results will soon give your rating its proper value.

AN ADVANTAGE OF PLAYING NORTHWEST PLAYERS is that the games proceed smoothly with overnight mail delivery. Ratings are adjusted and published each month.

EACH PLAYER IN A FIVE-MAN SECTION PLAYS TWO GAMES WITH EACH OF THE OTHERS.

THE ENTRY IS 50¢. A 6-MONTH SUBSCRIPTION EXTENSION IS THE PRIZE.

COMPLETE RULES ARE SENT.

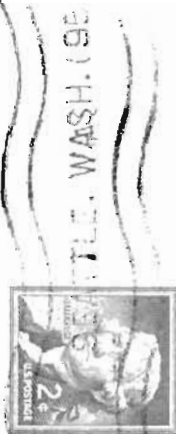
SEND ENTRY TO POSTAL EDITOR

Return postage guaranteed
Form 3547 requested.

WASHINGTON CHESS LETTER
1026 E. 7th St. SEATTLE 5, WASH.

B. L. Strachan
5103 N.E. 15 Ave
Portland 11, Ore

eh/57



POSTAL CHESS RATINGS

"A" Division

Mage	1686
Parsons	1661
Wade	1653
Weisscher	1635
Coubrough	1595
Edberg, R.	1576
Kaffenberger	1570
Weaver	1567
Bever	1522
Brookshire	1509
Skarsten	1486
Luters	1472
Howard	1455
Sween	1429
Knapp	1403
Phillips	1403
Woodward	1400
Carter	1383
Dickson	1370
Husby	1332
Baron	1308
Cairncross	1255

"B" Division

Laine	1274
Spatz	1273
Merk	1263
Hamilton	1261
McDonald	1252
Mills	1248
Haynes	1238
Edberg, A.Y.	1220
Van Natta	1212
Spencer	1185
Rogers	1178
Tresidder	1152
Nichols	1149
Gordon	1142
Lee	1140
Lyberger	1136
Raleigh	1134
Gemar	1100
Squire	1078
Watson	1070
Bell	1050
Bennett	1050
Bowerman	1050
James	1050
Miller	1050
Pierce	1050
Parker	1050
Scripps	1050
Pifley	1050
Youngman	1047
Benson	1031
Aldridge	1010
Skoglund	998
Skinner	996
Notter	920
Waldron	811
Adamson	781
Jacobson	710