

WASHINGTON

CHESS

LETTER

FEBRUARY
1957



PUGET SOUND OPEN
FEB. 22-24

SUBSCRIPTION PRICE OF TWO DOLLARS A YEAR INCLUDES MEMBERSHIP IN THE W.C.F.

CHess LETTER

OFFICIAL PUBLICATION OF THE
WASHINGTON CHess FEDERATION

111th Issue

Editor D. E. Wade
11023 25th N. E. Seattle, Wash.

Circulation R. R. Mork
1026 E. 71st. Seattle, Wash.

Publisher F. H. Weaver
501 Olympic Place Seattle, Wash.

February Contributors: Geo. Bishop, Don Eilmes, Dennis Hamilton & D. Vandenburg.

OTHER W. C. F. OFFICERS

President Dr. Griffith H. Parker
416 Hyde Bldg. Spokane, Wash.

Vice-President Max Mago
2437 55th S. W. Seattle, Wash.

Secretary Peder Husby
Route One E. Stanwood, Wash.

Treasurer W. H. Raleigh
4312 Woodland Park Ave. Seattle, Wash.

Publicity Director Don Eilmes
1303 44th Ave. S. W. Seattle, Wash.

Tournament Director Robert Edberg
Route One Ticon, Wash.

Tournament Director James McCormick
11035 Beacon Ave. Seattle, Wash.

AFFILIATED W. C. F. CHess CLUBS

Seattle, Spokane, Tacoma, West Seattle, McNeil Island, Kitsap County, Tri-Cities and Seattle Bocings Chess Clubs.

DON'T MISS NEXT MONTH'S CHess LETTER! It will have the stories on the Puget Sound Open, Spokane City Championship, P. S. L. results and the NORTHWEST RATING LIST. A "sizzley - juicy" issue!

PROGRESS REPORT ON THE N. W. RATING LIST

1. Reference point: National USCF Rating List, published May 20th, 1956, but effective as of December 31st, 1955.

2. All statistical data based on official reports in the WASHINGTON CHess LETTER, beginning January, 1956.

3. All individual games rated, if actually played. Forfeits not rated.

4. Following 1956 events will be covered by the Northwest Rating List:

Puget Sound League Matches, Spokane City Tournament, Puget Sound Open, Washington State Junior, Seattle Chess Club Championship, Inland Empire Open, Oregon Open, West Seattle Chess Club Championship, Inland Empire League Matches (if reported in the W. C. L.), Seattle Open, Tacoma C. C. Championship, Seattle Closed, Seattle Seafair Open, Walla Walla Valley Championship, Washington State Open, Woodpushers' Tournament and Wash. State Closed.

ROBERT A. KARCH, WCF Ratings Statistician, says we can safely announce a publication of the Northwest Rating List in the MARCH ISSUE of the W. C. L. The List will appear quarterly thereafter.

INFORMATION ON N. W. WASHINGTON

L. SHORTY CURRIT, Box 404 Ferndale, writes - "Part of your northwest enigma is now solved. The hub of the wheel, at least chesswise, is a radio program, originating live from the "Eagles Roost Cafe" at Ferndale. Each Wednesday evening for the next eleven weeks (letter dated Jan. 11th) from 8 to 9 p. m. is the Ferndale Hour over K. V. O. S. Radio, 790 on your dial. During this program and for about an hour after, we play chess.

Last Wed. was a bad night weather wise with slippery roads but we had good turnout. After the games the usual gathering of friendly braggers and liars, although here we've never known a player to tell a fib." (Some names next issue.)

PUGET SOUND OPEN FRIDAY, FEBRUARY 22

Last call for those planning to enter the PUGET SOUND OPEN starting at 1:30 p. m. in the SEATTLE YMCA, 4th AVE. AND MADISON, on Washington's Birthday, FRIDAY, FEBRUARY 22nd. Play will be in a second floor room. The room number will be posted on the Y bulletin board in the lobby and also posted in the Seattle C. C. in room 604. REGISTERING TIME starts at 1 p.m. Play should get underway one-half hour later. ROUND TWO will be Friday evening starting at 6:30.

Round three of this seven-round Swiss starts Saturday morning at 9 o'clock. Fourth and fifth rounds are also on Saturday, starting at 1 p. m. and 6 p. m.

The sixth round starts at 9 a. m. Sunday, Feb. 24th and the final round begins at 1 p. m. A minimum of \$25 is GUARANTEED by the W.C.F. for first prize & it is almost certain there will be several other good prizes.

The tournament will be USCF rated. The Median tie-breaking system will be used.

Entry fee is \$3.50 for Seniors and only \$2.00 for Juniors. Juniors are 18 years old and under.

For some reason, this tournament usually turns out to be the biggest, strongest and over all, best, west-side tournament of the year. If each reader of these lines would please take this article as a personal invitation and try to attend, it would be the greatest event ever held.

Some Former Puget Sound Open Champions.

Year	Champion	W	L	D
1956	James Schmitt	4	0	2
1955	Elmars Zengalis	6	0	1
1954	Viktors Pupols	5	0	1
1953	James Schmitt	4	0	2
1952	Dan Wade	5	0	1
1951	Alex Suchobeck	6	0	0

A favorite to win the coming P.S.O. would be difficult to name. MCCORMICK has been mentioned but has had trouble against PUPOLS. PUPOLS could be named a favorite but must overcome his jinx against State Champion EDBERG. The 3 named can all be labeled favorites. DALBERGS of Portland, DR. MURRAY of Raymond and one or two others could kick over the dope bucket if they should decide to compete. Of course if such top men as ZENGALIS, ULVESTAD or SHEETS got in, there will be no lack of competition!

Then there are WARTER, VELLAS, & (we whisper) even WADE with aspirations!



SEATTLE ON TOP IN P. S. L.

BOPS TACOMA 7-3 WEST SEATTLE WINS

On Sunday, Jan. 6th, Seattle Chess Club and Tacoma Chess Club met in a battle of the unbeaten. The lineup for the visitors from Tacoma had the 3 best players from that city in PUPOLS, HOLMES and HEWITT. If there was an edge at all, it appeared to favor Tacoma. However, when the games were finished, the Seattle team had pocketed a surprisingly one sided 7 to 3 victory.

On board two HOLMES sacrificed and forced WADE'S reluctant king to the middle of the board. The doomed king being out there with rooks, queen and several assorted other enemy pieces still on the board! So Tacoma took a 1 to 0 lead.

GRIFFITHS soon gave Seattle the win that equalized the score. ERICKSON put Seattle ahead 2-1. On first board, VIC PUPOLS and BOB EDBERG were playing chop sticks with the pieces in a mad race against the clocks. They both beat out a flag falling and fought to a draw. On board 3, HEWITT wasn't so fortunate and with a winning game, lost on time to TOM MAKENS who had almost no time left too.

The irrepressible GRIFFITHS was already on the second lap of the match and bagged his second win shooting the score up to $4\frac{1}{2}$ to $1\frac{1}{2}$ in Seattle's favor. WADE then tasted sweet revenge against HOLMES giving Seattle the necessary $5\frac{1}{2}$ to cinch the match. In that game, WADE "spent" a queen rook pawn and two rooks for a rook and a knight leaving each player with a king and two king-side pawns. The joker was - HOLME'S king was about a mile from the coming action so he had to resign.

ERICKSON, worried about getting car transportation home, lost a quickie to RON LOUGHEED. This was Tacoma's second and final win of the afternoon. The two first board players, EDBERG and PUPOLS, again battled to a draw and once again a red flag fell on Mr. HEWITT! This despite the fact the number of moves each hour had been amended from 40 to 36 by agreement before the match.

Seattle has now won three in a row, beating West Seattle and Tacoma by 7 - 3 scores and edging past Boeings $5\frac{1}{2}$ - $4\frac{1}{2}$.

One week later on Jan. 13th, West Seattle and Boeings met in a battle to take third place. Both teams were seeking their first match victory. The West Siders won a hard fought $5\frac{1}{2}$ - $4\frac{1}{2}$ decision.

The week before, MAGE and EILMES had split their games with EILMES taking the first and West Seattle's MAGE taking the second.

On first board, MCCORMICK replaced the departed PARSONS for West Seattle. MCCORMICK downed TREMBOIS in their 1st encounter but TREMBOIS was not impressed and bounced back to win the second.

BADER and WEISCHER split with the West Seattle man taking the second. On 4th board, GELL and VUKONICH split with the West Seattle man taking the second. F. M. HOWARD was the hero of the win by virtue of his $1\frac{1}{2}$ - $\frac{1}{2}$ decisioning of URIYU.

It was West Seattle's ability to keep coming back after losing that finally enabled them to win the match. The score was Boeings $4\frac{1}{2}$, West Seattle $3\frac{1}{2}$, then WEISCHER won to knot the score and VUKONICH completed the rally by downing GELL. In that final and deciding game, GELL had to make over ten moves in less than a minute! In his mad haste, GELL was soon short a rook and the flag fell on Gell with many, many moves left.

SEATTLE CLUB	7	TACOMA CLUB	3
Robert Edberg	1*	Victors Pupols	1*
Dan Wade	1	Vernon Holmes	1
Tom Makens	2	Charles Hewitt	0
Charles Griffiths	2	C. Carlson	0
David Erickson	1	Ron Lougheed	1

* Two drawn games.

WEST SEATTLE	$5\frac{1}{2}$	BOEINGS CLUB	$4\frac{1}{2}$
Jim McCornick	1	Jim Trembois	1
Ben Weischer	1	Max Bader	1
Max Mage	1	Don Eilmes	1
Eugene Vukonich	1	John Gell	1
F. M. Howard	$1\frac{1}{2}$	Dr. Uriyu	$\frac{1}{2}$

P. S. LEAGUE STANDINGS

	W	L		W	L
SEATTLE C. C.	3	0	WEST SEATTLE	1	2
TACOMA C. C.	2	1	BOEINGS C. C.	0	3

NOW IT'S OFFICIAL! Unless Dick Parsons can travel all of the way from Texas to play his unplayed first board games against Vernon Holmes, Holmes rates 2 forfeit wins boosting the score of the 2nd round West Seattle at Tacoma match from $5\frac{1}{2}$ to $2\frac{1}{2}$ to $7\frac{1}{2}$ to $2\frac{1}{2}$ in Tacoma's favor.

On Sun., Jan. 27th, Docings broke the ice and finally won its first match of the season getting revenge on Tacoma $5\frac{1}{2}$ to $4\frac{1}{2}$. TREMBOIS, BADER, EILMES & GELL all won opening games to take a 4-1 advantage. Only Bader was able to win a second game for Docings but a new man, MARTIN FAFF managed to get a draw which gave Docings the necessary $5\frac{1}{2}$ to win.

SEATTLE BOEINGS	$5\frac{1}{2}$	TACOMA C. C.	$4\frac{1}{2}$
Jim Trembois	1	Vic Pupols	1
Max Bader	2	Chas. Hewitt	0
Don Eilmes	1	Carlson	1
Martin Faff	$\frac{1}{2}$	Ron Loughood	$1\frac{1}{2}$
John Gell	1	Dennis Hamilton	1

WHERE TO PLAY CHESS

SEATTLE CHESS CLUB In the Central YMCA room 604 at 4th Ave. & Madison St. Open 7 days per week afternoons and evenings.

WEST SEATTLE CHESS CLUB Meets on the 2nd and 4th Friday evenings at the Hi-Point Recreation Center.

SPOKANE CHESS CLUB Meets Thursday evenings at the Desert Hotel.

TACOMA CHESS CLUB Meets on Friday evenings at the downtown library.

YAKIMA CHESS CLUB Meets at the Yakima Y MCA on Mondays at 7 p. m.

TRI-CITY CHESS CLUB (Richland, Kennewick and Pasco) meets every Thursday 7 p.m. to 9:30 p.m. at the Richland Community Hall on George Washington Way.

WALLA WALLA VALLEY CHESS CLUB Meets Friday evenings at 7:30 at the Walla Walla Y MCA.

OLYMPIA CHESS CLUB Meets every Monday at 7:30 p. m. in the Community Center.

BELLEVUE CHESS CLUB Meets on alternating Monday evenings at 7:30. Play is in the various homes of the members. For information, contact V. W. BEVER, Gibson 3636.

PLEASE SEND IN ALL CLUB NEWS TO THE EDITOR

PUGET SOUND LEAGUE SCHEDULE AND RESULTS

* Non-League Matches.

Seattle 7 West Seattle 3 at Seattle C.C.
Tacoma $7\frac{1}{2}$ Docings $2\frac{1}{2}$ at the Tacoma C.C.

*Seattle 4 Olympia 4 at Seattle C. C.

Tacoma $7\frac{1}{2}$ West Seattle $2\frac{1}{2}$ at Tacoma C.C.
Seattle $5\frac{1}{2}$ Docings $4\frac{1}{2}$ at Seattle C. C.

Seattle 7 Tacoma 3 at the Seattle C. C.
West Seattle $5\frac{1}{2}$ Docings $4\frac{1}{2}$ at Seattle .

Sunday, Jan. 27th. at the Seattle C. C.
Docings $5\frac{1}{2}$ Tacoma $4\frac{1}{2}$

Sunday, Feb. 3rd. at the Seattle C. C.
Seattle C. C. vs. West Seattle.

Sunday, Feb. 10th Matches.
Docings vs. Seattle at Seattle C. C.
*Olympia vs. Tacoma at Tacoma C. C.
*West Seattle at McNeil Island.

Sunday, March 3rd Matches.
Tacoma vs. West Seattle at Seattle .
*Seattle C. C. at McNeil Island.

Sunday, March 17th Matches.
Docings vs. West Seattle at Seattle.
Seattle C. C. at Tacoma C. C.
*Olympia C. C. at McNeil Island.

Sunday, March 31st Matches.
*Tacoma C. C. at McNeil Island.
*Olympia vs. West Seattle at Seattle.

If Docings wishes to play non-league matches with McNeil and Olympia, February 17th, March 10th and March 24th are open.

Matches are scheduled for 1 p.m. & are to be played at the rate of 40 moves an hour unless both teams agree to another rate. For matches against McNeil, take the 11:10 a.m. boat at the Steilacoom dock. Perhaps team captains should also write GEORGE B. WOOD, Librarian, lock box 500, Steilacoom, Wash. before visiting McNeil Island.

STATE JUNIOR AND INLAND EMPIRE OPEN IN APRIL !

The annual Washington State Junior Tourney should be played in April during spring vacation. Also the Spokane Club stages the I.E.O. during April.

GRIFFITHS WINS STATE SPEED

CHARLES GRIFFITHS of Seattle won the 1957 Washington State Speed Championship on Sunday, January 20th at the Seattle Chess Club. Griffiths scored $11\frac{1}{2}$ - $2\frac{1}{2}$ in the eight-player, double round-robin. This was about the strongest speed event ever held with nearly all of the best speed players entered. The most remarkable thing about the tourney was the new champion's score against a power-packed field including such well known stars at the blitz game as JIM MCCORMICK, RUSSELL VELLIAS, and VIKTORS PUPOLS. Griffiths lost twice to McCormick but defeated Vellias $1\frac{1}{2}$ - $\frac{1}{2}$ and Pupols and all other contestants 2-0. This included double wins over DAN WADE, 1956 speed king and the strong TOM MAKENS.

Griffiths has been playing chess for about two years and is only 15 years old! He is a student at Seattle's Franklin High School. Thus the new blitz king is younger and has less playing experience than any of his highly regarded opposition.

In chess at ten seconds per move, past tournaments have been full of forfeit decisions where players have been unable to move in time or have moved too soon. All players in this tournament were very familiar with the speed game and there were no forfeits.

JIM MCCORMICK placed second two full points behind the new champion with a $9\frac{1}{2}$ - $4\frac{1}{2}$ score. McCormick was able to defeat Griffiths twice but fell before VELLIAS $\frac{1}{2}$ to $1\frac{1}{2}$ and lost single games to PUPOLS, WADE and MAKENS.

RUSSELL VELLIAS was strong enough to win the Washington Speed two years ago with a 10-0 "pickot fence" against such chess heavy-weights as ULVESTAD, PUPOLS and others about as good. In this event, Russell was downed by Griffiths $1\frac{1}{2}$ - $\frac{1}{2}$, defeated McCormick $1\frac{1}{2}$ - $\frac{1}{2}$ and earned even breaks against Pupols, Wade and Makens. His 9-5 score was good for third place.

VIKTORS PUPOLS finished fourth with $8\frac{1}{2}$ - $5\frac{1}{2}$. He lost twice to Griffiths, broke even with McCormick, Vellias and Wade, downed Makens $1\frac{1}{2}$ - $\frac{1}{2}$ and won twice over DAVID ERICKSON and DON EILMES who finished 7th and 8th in this strong tourney.

A poor fifth with $6\frac{1}{2}$ - $7\frac{1}{2}$ was DAN WADE, defending speed champion. He split his games with everyone, high and low, except Griffiths who was too good and Tom Makens whom he edged $1\frac{1}{2}$ - $\frac{1}{2}$. "Last year's tourney was nothing like this!" Unquote!

TOM MAKENS, new at blitz style chess, was the drawing master of the tournament. He drew three times. He was downed by both Pupols and Wade $1\frac{1}{2}$ - $\frac{1}{2}$, beat Don Eilmes $1\frac{1}{2}$ - $\frac{1}{2}$, was blanked by Griffiths and split with all others.

DAVID ERICKSON took seventh with 3-11. He broke even in his first six games, but then lost eight straight. Erickson won single games from Wade, Makens, Eilmes.

DON EILMES finished last with $2\frac{1}{2}$ - $11\frac{1}{2}$. He won games from Wade and Erickson and drew a game with Makens. He lost several games he should have won.

	1.	2.	3.	4.	5.	6.	7.	8.	W	L	D	SCORE
1. Charles Griffiths	XX	0-0	$1\frac{1}{2}$	1-1	1-1	1-1	1-1	1-1	11	2	1	$11\frac{1}{2}$ - $2\frac{1}{2}$
2. Jim McCormick	1-1	XX	$\frac{1}{2}$ -0	0-1	0-1	1-0	1-1	1-1	9	4	1	$9\frac{1}{2}$ - $4\frac{1}{2}$
3. Russell Vellias	$0\frac{1}{2}$	$\frac{1}{2}$ -1	XX	0-1	1-0	0-1	1-1	1-1	8	4	2	9-5
4. Viktors Pupols	0-0	1-0	1-0	XX	1-0	$\frac{1}{2}$ -1	1-1	1-1	8	5	1	$8\frac{1}{2}$ - $5\frac{1}{2}$
5. Dan Wade	0-0	1-0	0-1	0-1	XX	$1\frac{1}{2}$	0-1	1-0	6	7	1	$6\frac{1}{2}$ - $7\frac{1}{2}$
6. Tom Makens	0-0	0-1	1-0	$\frac{1}{2}$ -0	$0\frac{1}{2}$	XX	1-0	$\frac{1}{2}$ -1	4	7	3	$5\frac{1}{2}$ - $8\frac{1}{2}$
7. David Erickson	0-0	0-0	0-0	0-0	1-0	0-1	XX	1-0	3	11	0	3-11
8. Don Eilmes	0-0	0-0	0-0	0-0	0-1	$\frac{1}{2}$ -0	0-1	XX	2	11	1	$2\frac{1}{2}$ - $11\frac{1}{2}$

SEATTLE CHESS

CLUB ELECTION

The annual Seattle Chess Club business meeting was postponed from the 4th until the 18th of Jan. The club constitution called for the meeting to be held on the third Friday of January.

JOHN RING was elected president, MAURICE HENION is the new vice-president and DON EILMES is secretary-treasurer. V. W. BEVER and WILLIAM GILLETTE were elected directors. We do not have a list of those present but are informed HUGH NOLAND, LEONARD SHEETS, TED DAVIDSEN, DAVID ERICKSON and F. M. HOWARD attended. Mr. HENION spends much more time at the club than most players are able to so he had been lined up for the important secretary-treasurer job. However, some member nominated him for the hitherto unimportant vice-president post and he was elected.

CLUB SPEED TOURNEY

A strong speed tournament was won by CHARLES GRIFFITHS, 15 year old student, Fri., Jan. 4th. Griffiths won all seven games before his last round clash with VIC PUPOLS. He swindled Vic out of a win to gain a draw and finish with $7\frac{1}{2}-\frac{1}{2}$, a half point ahead of Pupols. Pupols suffered a draw with F. M. HOWARD in the opening round, won six in a row and then drew Griffiths to finish second with 7-1.

DAN WADE, 1956 State Speed Champ, lost his first two games to Griffiths and Pupols before getting hot and taking six wins in a row to end third with 6-2.

JIM MCCORMICK, who had won two and tied Griffiths for first in another in 3 previous speed events, was a marked man in this tourney. MAURICE HENION dumped him in the first round and later he lost to Wade, Griffiths and Pupols. McCormick finished in a three-way tie for 4th with Henion and DAVID ERICKSON. All had 4-4 scores. Others were JOHN GELL with 2-6, F. M. HOWARD with $1\frac{1}{2}-6\frac{1}{2}$, and BILL SHEMARIA with 0-8. Howard and Shemaria left the tourney before it was completed forfeiting some of their games.

SKITTLES TOURNEY

In a skittles tourney on Sat., Jan. 5th, VIC PUPOLS finished first with a $13\frac{1}{2}-4\frac{1}{2}$ score. Games were played at 30 seconds (approximately) per move. Pupols was followed by ROBERT EDBERG with 10-8, JIM MCCORMICK with $8\frac{1}{2}-9\frac{1}{2}$ and CHARLES (the blitz king) GRIFFITHS with 4-14.

Even in overwhelming triumph, Pupols was unable to shake the Edberg jinx losing to Edberg $2\frac{1}{2}-3\frac{1}{2}$. Pupols did continue his domination of Jim McCormick. Pupols beat McCormick 5-1 and also beat Griffiths 6-0. Edberg lost 2-4 to Jim McCormick and defeated Griffiths $4\frac{1}{2}-1\frac{1}{2}$. McCormick downed Griffiths $3\frac{1}{2}-2\frac{1}{2}$.

MCCORMICK 5 GRIFFITHS 2

Jim McCormick defeated Charles (the blitz king) Griffiths 5 games to 2 in a match. Griffiths stunned McCormick by winning the opening game. It should be a cinch draw but McCormick ruined it by overlooking a knight-fork which did it. After that, Griffiths smelled victory 1 time only while taking lumps in 5.

VIC PUPOLS 7 MCCORMICK 3

Viktors Pupols proved too much for Jim McCormick in their recently finished clock match. The first game was won by Pupols before McCormick went to New York City and won the Long Island Open. When McCormick returned to Seattle, Vic continued where he left off. He won 6, lost only 2 and there were 2 draws. At one stage, McCormick narrowed the score to 5-3, but then was thoroughly trounced in the final two games.

WEST SEATTLE INVITATIONAL

In games played at the home of Mr. and Mrs. DON EILMES on Sat. eve, Jan. 5, TOM MAKENS and DAN WADE battled to beat each other mightily but finished drawn. Mrs. Eilmes, a comparative beginner, saw a way for Wade to win the game and demonstrated how Wade could have won much to his chagrin. Eilmes then beat Makens. More games will be played later.

CHESS AROUND THE WORLD

BY DON



EILMES

HERMAN STEINER MEMORIAL TOURNAMENT

Ten of Southland's leading chess stars completed two rounds in the masters' section of the Herman Steiner Memorial Tournament. Two wins and three draws were the result of somewhat cautious play in the first round. Sven Almgren defeated Robert Brieger, formerly of Seattle, on the white side of Brieger's defense. Peter Lapikan was successful against Sam Geller. Draws were; Robert Jacobs and Irving Revise, Bob Lorber and Robert Cross, and Saul Yarmak vs. Morris Gordon.

The tournament is a round robin, with games scheduled once a week. The tournament is being held at the Herman Steiner Chess Club in L.A.

BOBBY FISCHER

Young Bobby Fischer, 13, holds his own with New York's best in rapid play as well as in serious tournament play. In a recent speed tournament at the Manhattan Chess Club, he was undefeated and finished ahead of United States Champion Arthur Bisguier.

Hans Kmoch, director of the Rosenwald tournament gives as the "Game of the Century" Fischer's win over Donald Byrne, who previously had won handsomely from Sam Reshevsky. Kmoch points out that Fischer's win at 13, is superior to Morphy's win at 13, Reshevsky's win at 11, from Janowski, Pomar's win at 12 over Samisch, or his draw with Alekhine at 13, or even Capablanca's win from Corzo at 12, because of "Its stupendous originality and depth and brilliancy of play".

CALIFORNIA

The annual Inglewood tournament was won by Gerald Schain, with a perfect 8-0 score. LeRoy Johnson had 6½-1½.

HASTINGS INTERNATIONAL TOURNAMENT

*
*
*

Svetozar Gligoric of Yugoslavia and Bent Larsen of Denmark finished in a tie for first place in the International Tournament at Hastings, England, according to a report from the New York Times. Both had scores of 6½-2½. In the final round, Gligoric, the only one of the 10 competitors who did not lose a game, defeated Fredrik Olafsson of Iceland for the latter's first loss. Gligoric had four victories and 5 draws. Following is the final standing of the Masters:

* S. Gligoric	6½	L. Szabo	4½
* B. Larsen	6½	R. Loran	3½
* A.O. Kelly	6	D. Horseman	3
* F. Olafsson	6	J. Penrose	2½
* P. Clarke	4½	H. Alexander	2

*
*

HOLLAND

* The Dutch Open Championship was held at Kampen in a seven-round tournament run on the Swiss System with twelve players. * The German player, Diemer, was first with 5 points, followed by van Scheltinga 5 and Goris 4½.

*
*

INDONESIA

* The Soviet grandmaster Averbach made a tour in late 1956 here and after several simultaneous displays played and won a match against the Indonesian Champion, Hungalong by 3½-1½.

*
*

U. S. S. R.

* This year's Moscow Championship ended in a tie between Petrosian and Simagin. In a play-off for the title Petrosian won by 4½-1½.

* The Women's World Championship was held in Moscow also between the holder, Bikova, the ex-holder, Rudenko, and Rubtsova. The final scores being; Rubtsova 10, Bikova 9½.

S P O K A N E

The Spokane Chess Club has established somewhat of a dictatorship by electing Dr. Griffith H. Parker permanent club director with the power to appoint the other officers. Dr. Parker has served as club president since the organization in 1950.

He appointed Don Daniels as secretary and assistant director with Robert Kittredge as treasurer.

The board of directors set the dues at \$5.00 a year with \$2.00 of this to go as a subscription to the Washington Chess Letter. Henceforth all the club members will be Letter readers.

The Spokane City Championship Tourney, tentatively scheduled to begin January 24, was postponed for one week because of the weather. It will be the usual six round Swiss with two games played each Thursday night for three weeks. Gordan Cornelius is, as usual, the favorite to retain his title. A couple of the club members have gotten draws with him lately and are hoping to oust him from the throne.

Kinman Business University has a chess club and some of its members have been coming to the Spokane club meetings. Since most of the Kinman players are beginners there has been no talk of a club match.

The Spokane club has scheduled Sammy Reshevsky for an exhibition match March 5th. The site has not been definitely picked.

Last year Gordon Cornelius won the city title by finishing with $5\frac{1}{2}-1\frac{1}{2}$ to outdistance a field of 36 players. Ray Kromer placed second with $4\frac{1}{2}-1\frac{1}{2}$ and William Voget followed with $4\frac{1}{2}-1\frac{1}{2}$.

AN INTERESTING GAME FROM THE U.S.OPEN round 12

White Robert Brieger Black J. Camarena
notes by Brieger --- The Mad Texan.

1.	P - K4	N - QB3
2.	N - KB3	P - Q3
3.	P - Q4	B - N5
4.	P - Q5	N - K4
5.	N x N (a)	B x Q
6.	B - N5 ch	P - B3
7.	P x P	Q - R4 ch
8.	N - QB3	Castles QR !,!!
9.	N - B4 !	Q - N5 (b)
10.	B - K3 !? (c)	B x P !? (d)
11.	P - QR3	Q x B ? (e)
12.	N x Q	P x P
13.	N x RP ch	K - Q2
14.	N - N6 ch	K - B2
15.	N x P !	K x N
16.	R - QB	N - B3
17.	R x B ch	K - N2
18.	P - B3	P - K3
19.	K - B2	N - Q2
20.	N x N	R x N
21.	KR - QB	B - K2
22.	R - B3	R - QN
23.	R - B6	P - Q4 ????
24.	R - N6 ch	K - R
25.	R - R6 ch	K - N2
26.	R - R7 mate	

(a) Patterned after a famous game:

1 P-K4;P-Q4 2 PxP,QxP 3 N-QB3,Q-Q
4 P-Q4,N-QB3 5 N-B3;B-N5 6 P-Q5,N-K4
7 NxN,BxQ 8 B-N5 ch,P-B3 9 PxP:

(b) If 9--Q-B2 10 N-Q5,Q-N 11 P-B7, and White wins.

(c) 10 P-QR3,Q-B4 11 B-K3,Q-R4 12 PxP ch,
K-N 13 RxB,P-K3 14 N-R5,N-K2 15 P-KN4
QxNP 16 B-R6,Q-N7 17 N-N5!,QxKP
18 K-Q2,Q-Q4ch 19 K-B and wins.
Analysis by DiCamillo.

(d) Best was 10 PxP!

(e) After 11....:Q-N6 12 PxPch,K-N 13 B-R6
R-Q2 14 N-R5,QxP(7) 15 N-B6ch,K-B2
N-N5ch,KxN and now the unbelievable
17 P-N8(N) mate!!! Exquisite

Letters To Ye Editor

HUGH NOLAND, 4738 Brooklyn, Seattle, 5, Wash. writes: "Dear sir: It is always a source of great irritation to myself, as, I am sure, it is also to other subscribers, when a game, such as Eilmos-Wade game in the January issue, is printed without a word of comment about an enormous and obvious blunder.

In the game referred to, White's 30th move, viz., 30 PxP???, is such a blunder. Instead, 30 Q-Q7 wins immediately. (Or, if not immediately, puts White at least two pieces up.)"

Editor's note: Reader Noland is so right! How we missed it, we can't say. Perhaps a mental block making us unwilling to admit the game was saved not because of our cleverness but because of an opponent's blunder! White plays 30 Q-Q7, answered by PxP; 31 PxP, IF R-B2; 32 P-K7 ch. wins, IF 31---K-N1; 32 Q-B7ch., K-R; 33 P-K7 wins. OR if 30 Q-Q7 is answered by R-B2; 31 P-K7ch., K-N2; 32 P-K8(N) ch. also wins with ease. Ouch!

DICK PARSONS, AF 29017638, Flt. 14, Box 1509, L. A. F. B., San Antonio, Texas, has this to say: "Thought I would drop a line letting you know how the old boy is getting along. As you can see by my address, I'm where you can stand up to your knees in mud and still have the sand blow in your face.

My qualifications were high enough to give me my choice of four fields and I chose the field that would allow me to study Russian. I'll probably go to Syracuse, N. Y. for a year of training & then overseas. I will take advantage of all the playing I can get in down here and at New York before I go overseas. I'll keep you informed on my playing as I travel.

I would like to close wishing you a very wet and miserable time of it.

Editor's note: Wash. State has certainly lost a lot of good players recently! BISHOP, SCHAIN and BRIEGER left us for California, SVENNSON of Spokane went back to Sweden, BILLS is in Texas and now PARSONS is in Texas.

RODGER G. SPENCER, Box 51, Benton - City, Wash., Secretary of the Tri-City C. C. of Richland has this to say:

"I have been intending to write and extend my congratulations to you and your associates for the fine work done in the Chess Letter. It gets better each issue.

Our Tri-City Chess Club is on road to recovery. We might shape up into decent club yet. We have acquired several new members recently and they seem to be interested. The Walla Walla Pen. sent us a notice they are ready to play again and we are going to schedule a match with the Pen. sometime in February. Possibly our club can become more active again in the Inland Empire League. Of course; Walla Walla Valley Chess Club has taught us in our last two matches some manners (I believe the writer should go to 6th board on a 5-board team), but I think the matches stimulate interest in a club.

Unfortunately for the club, TED WARNER is on alternating shift work and can only make it to the meetings about every third week. From a point rating standpoint, this is good for the writer but we all learn something by playing Ted.

My main purpose in writing is to get some sample copies of the C. L. sent our members listed below. I mentioned this at our last meeting and some seemed quite interested. They felt local news is better than national news.

Harry F. Jensen	R. L. Turner	Roy Burch
500 Blue	2415 Swift Blvd.	1414 Alder
Richland, Wash.	Richland, Wash.	Richland

John Boderick	Paul Conrad	B. Arbogast
121 N. Yost	1106 Elm Ave.	Mt. Rt. #2
Kennewick, Wash.	Richland, Wn.	Court St.
		Pasco, Wash.

K. Wm. Hess	Paul Prichard	Frank Cooper
1722 C Jadwin	504 Douglas	1308 Haupt
Richland, Wash.	Ave.	Richland, Wn.
	Richland, Wn.	

E. E. Hovermale
Gen. Delivery
West Richland, Wn.

May I extend my best wishes to DICK PARSONS for a successful career in the Air Force. I recently played Dick a couple of postal games and while he stomped on me a couple of times, I didn't wish him that far away---he was a definite asset in our Washington chess world.

JACK NOURSE'S QUEST FOR CHESS

IN LANDS ACROSS THE SEA

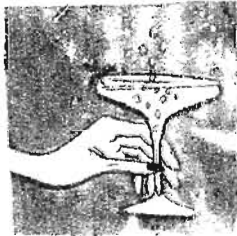
Jack Nourse, mainstay of Kitsap County chess, (without whom they cease to function?) left early in September for an extended visit to foreign lands. In past months he has recounted chess experiences of his travels through England, France, and Spain. The letter below is postmarked Palma, Mallorca, Spain. He is moving, around the 21st of January, and any of his friends wishing to write to him, can address letters to Señor John Nourse, c/o Viajes Bakumar, Avenida de General Franco, Malaga, Spain.

Hi Friends:

Just a note to let you know I am still alive. I represented the WCF moderately well in the Mallorca Chess Tournament. Tied for 5th place in a field of 18.

I lost some won games but suspect I was a little lucky in some of my wins, -a typical Nourse record. They have a wonderful club here and there are usually about 20 players at the club each day. Even the weaker players play a bright game. Win or lose, these

people enjoy themselves. In this tournament they used clocks, but in the middle of the play, when things were really hot, some friend might arrive, and they would sit back and talk animatedly for several minutes, paying no attention to the clocks. They really enjoy themselves. I have watched their football games and was impressed by the same thing, the applause and interest is shown for clever artistry and not for winning the game, solely. They show the best sportsmanship of any people I have known. I can recommend Palma as a place to live. Very reasonable, too. We had 8 servings of a liqueur, and I bought 2 quarts to take out, for a total of \$2.



Later, I had a dent taken out of a fender (-what a spot for a note by the editor-) grease job, and a wash job, and all 4 fenders re-touched with paint, and the bill came to a grand total of \$2.50. Not bad, eh? I have not received any Chess Letters, although they are supposed to be forwarded from Blakely. I suppose they will be showing up soon. It takes 30 days for ordinary mail to get here and up to 10 days for airmail.

The weather is gorgeous, and warm enough to lie around in a bathing suit, although I am not doing it.

Thanks for the help on the Muzio. (note: We airmailed a page from PCO when Jack complained he was getting beat with this opening). But not any more, now that I have learned the Salvio.

Doc Almond wrote to say that he offered to furnish transportation if someone would do some organizing, -but no takers. The trouble with Kitsap is distance. It is 30 miles round-trip, maybe more, from Winslow or Bremerton to Paulsbo, and it makes it hard to keep up contact.

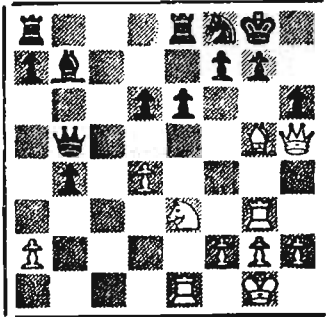
I expect to be back in June or sooner.

Regards,

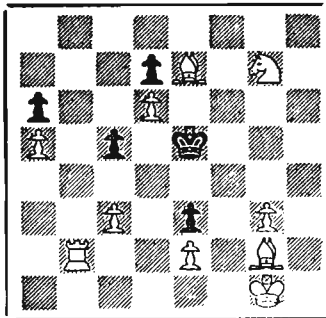
JACK

SOLVERS' CONTEST

It's a good thing this page is read by solvers, who can figure out what we intend. Last month's solutions read ...N/B3 instead of B4, and 2. K-B6 for 2. K-B5, plus interchange of nomenclature "endgame" for "problem", which the class A editor, ol' Honest George Bishop has warned the class B editor about many many times

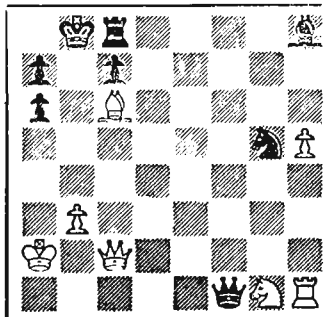


White to play and win



SOLUTION:

- 1 B-R8 P-B5
- 2 R-N7 K moves
- 3 R moves, mate



SOLUTION:

- 1 N-B3 QxR
- 2 N-K5 QxB
- 3 NxQ with mate in 8

The position at the top is your target for February and will test your knowledge of a tried and true weapon. Black is two pawns ahead and has a Bishop almost trapped but it is now White's move and he'll murder the bum, for 5 points.

Correct solutions to the endgame last month were received from:

- | | |
|---------------|---------------------------|
| H.F. Thompson | One of the wrong |
| R.G. Spencer | solutions blows up |
| Cliff Dolph | as follows: |
| C. Ballantine | 1 N-R3 Q-B3 |
| Hugh Noland | 2 Q-KN2 NxN |
| Bruce Oldham | if 3 B-R8 Black has Q-N7+ |
| C.J. Sween | |

The late starter problem was solved by the following: One of the misses went like this:

H.F. Thompson	1 P-B4	K-Q5
C. Ballantine	2 B-Q5	but K-K4
Hugh Noland		forces a 4th move.
Paul Bezemer		
C.J. Sween		

Don't forget that second prize is more valuable than first prize, so rate your efforts toward winning fame or fortune. There is also a third prize and a door prize.

Again we urge readers who enjoy problems even if they don't care to enter, to send in at least one card so we will know if this page is worth the effort..

Coming around the first turn, the leaders are: Ballantine, Oldham, Spencer, and Dolph, with others within easy distance any time they want to make their move.

Geo. Bishop's address for the next 30 days is Box 4038, Albuquerque, N.M. and he likes to get mail.

SEND SOLUTIONS TO F.H. WEAVER, 501 OLYMPIC PL., Seattle, before March 1

WELCOME NEW MEMBERS

Since publication of the membership list in the December issue of Chess Letter, more chess players have discovered the pleasure of associating themselves with our growing chess community, as shown by the following list. Included are several real life, professional printers, and a publisher, so we better try for better results from our little jim-dandy \$27.36 "Excelsior" (Boys, make big money!) printing press. With all this prosperity maybe we could trade it in on a 2B outfit, with genuine plastic rollers, additional.

Lt. Geo. L. Fay
APO San Francisco

Helen J. Cole
Wichita, Kansas

Arthur B. Stamer
San Francisco

M.D. Clark
4234 Interlake, Seattle

Guenther Koenkow
13202 8th Ave. S., Seattle

Paul Leiser
9344 30th N.W., Seattle

Robert A. Karch
1502 N. 57th, Seattle

Robert Shimer
3761 154th S.E., Bellevue

Leif Berger
3415 W. 71st, Seattle

Dwight Edwards
7556 21st S.W., Seattle

Ben Weatherby
316 11th Ave., Lewiston, Idaho

Charles Joachim
4721 34th N.E., Seattle

Prof. M.G. Arsove
U of W, Seattle

Prof. E.A. Michael
U of W, Seattle

Glen Wilsey
Ellensburg

Robert Bennett
Holden

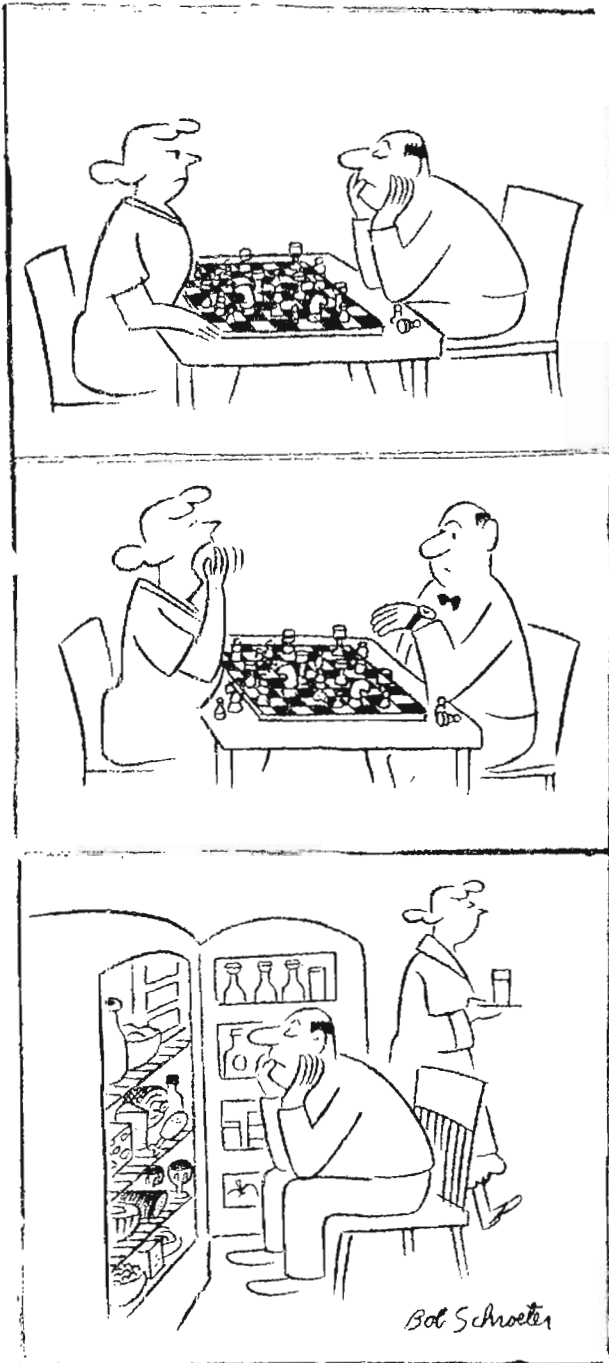
L.A. Walker
6029 Airport Way, Seattle

J.T. Scripps
Seattle

Skagit Chess Club
Mount Vernon

Herschel R. Peterson
Billings, Montana

Larry Porter
Billings, Montana



Bob Schroeter

MORE INTRODUCTORY NOTES



Introducing from left to right F. H. (HOWARD) WEAVER, W. H. "DOC" RALEIGH and DAVID ERICKSON. Weaver is the WCF's publisher and printer - prefers to be remembered as the inventor of the Little Yneh, a character in a couple of his fish and chess tales run a few years back. Weaver's participation in chess tournaments and matches has been sparing during the past year as he has preferred the promotion of the game to the playing of it. He is playing postal chess and at one time he cut quite a swath in over-the-board play. He placed high in the first Washington Open back in 1951 with a 4-2 score in that 37-player event. In the 12-player round-robin Washington State Closed, he again surprised by finishing near the top with a 7-4 score. Since that time, Weaver has usually exerted himself against only the top players and since a high finish means work in nearly every game, has failed to do as well in tournaments as he showed promise of doing back in 1951. He has contributed greatly to Washington chess with his work on the Chess Letter. Since taking over the publishing job, circulation has rocketed to a new high. Mr. Weaver's job alone may not account for the increase, but it has certainly helped it!

W. H. RALEIGH has been treasurer of the W. C. F. since near the beginning of the federation. As we now have more money and more equipment and more members and a better magazine than we ever had before, the record would appear to indicate Mr. Raleigh has not been a failure at his job. Raleigh got the "doc" nickname from a wholesale drug business he once was in. In the early days of the W. C. F. and the Puget Sound League, Raleigh organized a Quoon Anne club with headquarters at his store in that district. He, Bever, H. H. Roberts and Bob Noale along with others, played matches in the League and although they lost more matches than they won, a good time was had by all.

DAVID ERICKSON is long-time member of the Seattle C. C. as are also Weaver & Raleigh. During 1956, Erickson was the club secretary-treasurer. He did a major share in the moving of the club last summer insuring a new prosperity for the club which it had been unaccustomed to in previous years. Erickson plays a hard, stubborn brand of chess difficult to defeat. It is doubtful if he has ever looked at any chess book but without benefit of book learning he finished second in the last Seattle Chess Club Championship Tournament.

IDAHO STATE TOURNAMENT, Boise on Fri., Sat., and Sun., Feb. 15, 16 and 17th. 6 rds.

NORTHWEST RATING LIST Sgt. Karch has now progressed up to April 28th, 1956 or just prior to the Oregon Open. Here are the top men at that date: Zengalis 2231, Ulvestad 2218, Schmitt 2162, Pupols 2083, Cornelius 2068, Bills 2038, Wade 2034, McCormick 2029, Edberg 2008, Warner 2004 and Dr. Baumwell 1986. Up-to-date list coming!

GAMES

By Wade

The following game from the recent State Closed is below par for both contestants. It is presented only because of the game's importance.

V. PUFOLS

R. EDBERG

- | | |
|-------------|-------------------|
| 1. P-QB4 | N-KB3 |
| 2. N-QB3 | P-QB4 |
| 3. P-KN3 | N-B3 |
| 4. B-N2 | P-KN3 |
| 5. N-B3 | B-N2 |
| 6. P-Q4 | PxP |
| 7. NxP | O-O |
| 8. O-O | P-QR3 |
| 9. P-KR3 | Q-B2 |
| 10 B-K3 | Q-K4? |
| 11 N-R4 | N-KR4 |
| 12 N-KB3 | Q-K3 |
| 13 N-N6 | R-N1 |
| 14 Q-Q2 | N-B3 |
| 15 N-N5 | Q-Q3 |
| 16 QxQ | PxQ |
| 17 QR-Q1 | P-KR3 |
| 18 N-B3 | N-K5 |
| 19 N-Q4 | R-K1 |
| 20 P-QR3? | Nx ^N P |
| 21 NxN | QPxN |
| 22 KR-K1 | N-B4 |
| 23 B-QB1 | B-Q5 |
| 24 P-K4 | BxN |
| 25 PxN | RxRch. |
| 26 RxR | BxP |
| 27 BxKRP | B-K3 |
| 28 B-KB1 | R-K1 |
| 29 B-KB4 | P-Q4 |
| 30 PxP | PxP |
| 31 B-N2 | R-QB1 |
| 32 R-Q1 | R-B7 |
| 33 BxP?? | RxBP |
| 34 B-B7 | R-Q7 dis.ch. |
| 35 Resigns. | |

Too many novices like "Return of the Mole Man"? Pupols must have been in bad time trouble.

In the following encounter from the State Closed, Wade opens with a rush but Edberg fights back to gain equality.

D. WADE

R. EDBERG

- | | |
|----------|-------|
| 1. P-K4 | P-QB4 |
| 2. N-KB3 | N-QB3 |

- | | |
|-----------|--------|
| 3. P-Q4 | PxP |
| 4. NxP | N-B3 |
| 5. N-QB3 | P-Q3 |
| 6. B-B4 | P-KN3? |
| 7. NxN | PxN |
| 8. P-K5! | N-Q2 |
| 9. P-K6 | PxP |
| 10 BxP | N-B3 |
| 11 BxB | RxB |
| 12 B-K3 | R-B2 |
| 13 Q-Q2 | B-N2 |
| 14 B-R6 | O-O |
| 15 BxB | KxB |
| 16 O-O | P-K4 |
| 17 QR-K1 | R-K2 |
| 18 N-K4 | NxN |
| 19 RxN | P-Q4 |
| 20 R-K2 | Q-Q3 |
| 21 R/1-K1 | R/1-K1 |
| 22 Q-B3 | K-N1 |
| 23 P-KR4 | P-B4 |
| 24 Q-KN3 | Q-KB3 |
| 25 R-Q2 | Q-K3 |
| 26 P-R5 | K-N2 |
| 27 PxP | PxP |

Drawn.

Wade cannot break through and Edberg will not try to break through. Edberg needed only $\frac{1}{2}$ point to win tourney.

In the following PSL game, Holmes practically pulls Wado's king out into the middle of the board.

V. HOLMES

D. WADE

- | | |
|-------------------|----------------------------|
| 1. P-K4 | P-Q4 |
| 2. PxP | N-KB3 |
| 3. P-QB4 | P-QB3 |
| 4. N-QB3 | PxP |
| 5. PxP | NxP |
| 6. N-B3 | N-KB3 |
| 7. P-Q4 | P-KN3 |
| 8. B-QB4 | B-N2 |
| 9. Q-N3 | O-O |
| 10 N-K5 | P-K3 |
| 11 B-K3 | QN-Q2? |
| 12 NxBP! | KxN |
| 13 BxPch. | K-K2 |
| 14 P-Q5 | Q-R4 |
| 15 O-O | N-B4 |
| 16 BxNch. | QxB |
| 17 BxB | QRxB |
| 18 P-Q6ch. | KxP |
| 19 N-N5ch. | K-K4 |
| 20 QR-K1ch. | K-B4 |
| 21 Q-K6ch. | K-B5 |
| 22 P-N3ch., K-N4; | 23 R-K5ch., K-R3; |
| 24 RxQ, RxR; | 25 Q-K3ch., Black resigns. |

Rummaging through our "files" with a shovel the other day we accidentally, and fortunately, came up with some nice games sent us last August by JOHN DE WITT, former Chess Letter editor. Some one from east of the mountains sent us a batch of games some time back. Perhaps we will publish them if we can locate them.

In April of '56 DeWitt played in the Capital City Open in Columbus, Ohio finishing 8th out of 36. He scored $3\frac{1}{2}$ - $1\frac{1}{2}$. Following is his most interesting game from the tourney. John wrote "Nothing great, but just a little unusual."

J. DEWITT (White) vs. RALPH HAMEL of Salina, Kansas. (Notes by DeWitt)

<u>J. DEWITT</u>	<u>R. HAMEL</u>
1. P-Q4	P-Q4
2. N-KB3	N-KB3
3. P-QB4	B-N5

This move does not seem good as it gives White too much latitude in the center. White could continue, for instance with: 4. N-K5, B-B4; 5. PxP, NxP; 6. P-B3 followed by P-K4 with a powerful center. Also good is the simple 4. QN-Q2, followed by a quiet build-up. The move chosen is a little sharper than these, as it puts immediate pressure on the center and contemplates an early opening of the lines.

4. N-B3	BxN
5. NPxB	P-K3
6. B-N5	B-K2
7. P-K4	----

The variations resulting from this move were not calculated. It looked as though White would fare a little better as he would end up with two bishops versus two knights in an open position.

7. ----	PxKP
8. PxP	NxP

Picking up the gauntlet.

9. BxB	NxN
10. BxQ	NxQ
11. BxP	NxNP
12. R-QN1	N-R5
13. B-N2	P-QR3

13----N-B3 looks much better. (Editor's note - 13----N-B3; 14 RxP, NxP; 15 B-K5 and Black still has very hard time)

14. RxP	N-Q2.
15. B-B6	O-O

Difficult to suggest anything better.

16 BxN/5 and White wins easily.

The following game demonstrates in a drastic way the results of relying on the books. The first 15 moves may be found in any standard treatise, White's 16th move cannot. DeWitt's opponent is unbeaten until this, the last round.

LARRY MANIS of Elwood, Indiana.

<u>J. DEWITT</u>	<u>L. MANIS</u>
1. P-Q4	P-Q4
2. P-QB4	P-K3
3. N-QB3	N-KB3
4. B-N5	B-K2
5. N-B3	QN-Q2
6. P-K3	O-O
7. R-B1	P-B3
8. B-Q3	PxP
9. BxP	N-Q4
10. BxB	QxB
11. O-O	NxN
12. RxN	P-K4
13. PxP	NxP
14. NxN	QxN
15. P-B4	----

The Rubinstein Attack - well worth knowing.

15. ----	Q-K5
16. B-N3	----

The sacrificial B-Q3 or Euwe's Q-K2 are usually played here.

16. ----	B-K3
----------	------

16----B-B4 looks better here so if 17 B-B2, Q-K3 or if 17 P-N4, B-K3; 18 B-B2, Q-Q4 and Black should find compensation in White's dislocated pawns & exposed king. Here Black should strive to prevent White's P-B5 or make him pay for it.

17. B-B2	Q-Q4
18. Q-N1	P-KR3

Not 18----QxQRP; 19 QxQ, BxQ; 20 P-QN3 and the bishop is trapped. Now the Black game deteriorates.

19. P-B5	B-Q2?
----------	-------

This loses a piece outright. The rest is just nopping up. The only possible move would have been B-B1, but then Black would have been so far behind in development that it is doubtful if recovery was possible.

20. R-Q1	Q-R4
21. RxB	Q-N3
22. R-N3	Q-B4
23. R/7xNP	KR-K1

White won.

DeWitt played in the Trans-Mississippi scoring $2\frac{1}{2}$ - $3\frac{1}{2}$. That was at Davenport, Iowa.

From the 10th Annual Golden Knights Tmt.

E. E. HANSEN
Coos Bay, Ore.
Ninzo-Indian Def.

BEN WEISSCHER
Seattle, Wash.

- | | |
|----------|--------|
| 1. P-Q4 | N-KB3 |
| 2. P-QB4 | P-K3 |
| 3. N-QB3 | B-N5 |
| 4. Q-B2 | P-Q4 |
| 5. P-QR3 | BxNch. |
| 6. QxB | N-K5 |
| 7. Q-B2 | O-O |
| 8. P-K3 | P-QB3 |
| 9. N-B3 | N-Q2 |
| 10 B-Q3 | P-KB4 |
| 11 O-O | P-QN3 |

Black's move is not the best as the continuation shows (Weisscher)

- | | |
|------------------------------------|-------|
| 12 PxP | ----- |
| The start of the fireworks (B. W.) | |
| 12 ---- | BPxP |
| 13 Q-B6 | ----- |

Ouch! Black faces the loss of the rook or two important center pawns. (B. W.)

- | | |
|---------|-----------|
| 13 ---- | N/Q2-QB4! |
|---------|-----------|

Protects the pawns, attacks the unprotected bishop. The pawn cannot capture the knight because of 14 PxN, B-Q2; 15 Q-N7, NxQBP and White's queen is lost. (B.W.) (Best move of the game - Ed.)

- | | |
|---------|------|
| 14 QxR | NxB |
| 15 QxRP | B-Q2 |

Black is down the exchange and pawn but more than makes up for the loss with his position. (B. W.)

- | | |
|---------|-------|
| 16 N-K5 | NxN |
| 17 PxN | B-QN4 |

Attacks the rook and threatens 18--R-B2 winning White's queen. (B. W.)

- | | |
|----------|-------|
| 18 P-QR4 | BxR |
| 19 KxB | N-B4? |

19----Q-R5 looks good too but Black would rather stick to his original plan of making life miserable for White queen. (B. W.) ((Editor's note - Black missed a chance to win in "the grand manner" here. Black has a forced mate in a few moves. 19----Q-R5! 20 K-K1 (good as any! If 20 P-N3, QxRP and the setup is the same) QxP ch.; 21 K-Q1, R-B1! (killer); 22 Q-R6 (no other move!) Q-N8ch.; 23 K-K2, R-B7ch.; 24 K-Q3 or K-B3 and Black mates in one.)) This would have put White out of his misery. The text has White hacked to bits.

- | | |
|--|-------|
| 20 P-R5 | ----- |
| 20 P-QN4 is better. After the exchanges, Black would have the queen for a rook, bishop and pawn. (Weisscher) | |
| 20 ---- | N-N6 |
| 21 R-R3 | ----- |

Not good, but the rook did not have a good square to go to. White had plans for one last-gasp effort to win. If 21--NxB; 22 R-B3 and Black loses his strong knight for White's weak bishop. A White attack starting with R-B7 could soon develop. (Weisscher)

- | | |
|---------|------|
| 21 ---- | Q-B1 |
|---------|------|

Now White is indeed in a bad spot. He cannot take the knight because bishop and rook would both fall in a series of checks by the enemy queen.

- | | |
|---------|--------|
| 22 B-Q2 | NxBch. |
| 23 K-K2 | N-N8 |

Attacks the rook and threatens mate in 3 that can only be stopped by 24 R-B3 after which follows NxRch.; 25 PxN leaving Black a rook ahead in the end game.

- | | |
|-------------|---------|
| 24 QxP | Q-B7ch. |
| 25 Resigns. | |

Black announced mate in two moves.

Game From the McCormick-Griffiths Match.

CHAS. GRIFFITHS

JIM MCCORMICK

- | | |
|-----------------------------------|---------|
| 1. P-Q4 | P-KB4 |
| 2. P-KN3 | N-KB3 |
| 3. B-N2 | P-KN3 |
| 4. P-QB4 | B-N2 |
| 5. P-N3 | P-B4 |
| 6. B-N2 | PxP |
| 7. N-KB3 | Q-R4ch. |
| 8. Q-Q2 | QxQch. |
| 9. QNxQ | N-B3 |
| 10 NxP | O-O |
| 11 O-O-O | N-KN5! |
| 12 NxN | BxBch. |
| 13 KxB | QPxN |
| 14 QR-KB1 | B-K3 |
| 15 P-KR3 | N-B3 |
| 16 P-K4 | QR-Q1 |
| 17 K-B3 | R-Q2 |
| 18 PxP | BxP |
| 19 P-KN4 | R-Q6ch. |
| 20 K-B2 | R/1-Q1 |
| 21 PxB | RxNch. |
| 22 K-B1 | RxRP |
| 23 PxP | PxP |
| 24 R-Q1 | RxRch. |
| 25 RxR | RxP |
| 26 B-R1 | K-B2 |
| 27 R-N1 | K-K3 |
| 28 White is helpless, so resigns. | |

This was the 5th game of a match in which McCormick won 5 games to 2.

Jim McCormick has agreed to annotate games for the Wash. Chess Letter.

D. Wade

IDAHO CHESS

THE IDAHO CHESS QUARTERLY, official publication of the Idaho Chess Association and edited by the President of this association, DICK VANDENBURG, 913 N. 22nd St., Boise gives the following news.

IDAHO CLUBS

BOISE. Meets at 8 p.m. Wednesdays at Y.A.C.A.

NAMPA. Meets at 8 p.m. Thursdays at Lakeview Parkhouse.

RUPERT. Meets at 8 p.m. Wednesdays at Chamber of Commerce Office.

TWIN FALLS. Meets 8 p.m. Thursdays at Rogerson Hotel.

POCATELLO. Generally meets Wednesday nights. Contact R.K. HART for information.

ASSOCIATION LEADERS

President and Editor - DICK VANDENBURG.

Secretary-Treasurer - JERRY E. STANKE, at 612 17th Ave. S., Nampa, Idaho.

Committeeman - JOHN KURDEKA, at Box 412, Twin Falls, Idaho.

Committeeman - BOB CAMPBELL, 708 11th St. Rupert, Idaho.

ASSOCIATION MATCHES

Nampa at Boise resulted in a $2\frac{1}{2}$ - $2\frac{1}{2}$ drawn match.

Boise at Nampa two weeks later resulted in a $4\frac{1}{2}$ - $2\frac{1}{2}$ win for Boise putting Boise into the finals & eliminating the Nampa team.

On Nov. 4th, Twin Falls and Rupert met at Twin Falls and the match ended a 5-5 draw.

On Nov. 18th, the teams met in Rupert and Twin Falls won $6\frac{1}{2}$ - $3\frac{1}{2}$.

On Dec. 30th, an almost unheralded Pocatello team surprised Twin Falls $6\frac{1}{2}$ - $3\frac{1}{2}$ in their match played at Rupert. This result gave Pocatello the right to play the Boise Club in the finals of the first Idaho State Team Tournament.

Boise and Pocatello are scheduled to play their finals match at Rupert on Sunday, January 27th.

BOISE CLUB NEWS

GEORGE KOLTANOWSKI, world's blindfold champion paid another visit to Idaho. He first played and won a pair of blindfolded games winning both. His opponents were J. KURDEKA and BOB CAMPBELL. KOLTANOWSKI defeated 14 players in twenty games 20 to 0 without a blindfold in a simultaneous. 7 Boise, 3 Nampa, 3 Twin Falls and 1 Rupert player took part in the exhibition.

C. H. STEWART, DICK VANDENBURG and DR. C. B. SMITHSON are the leaders on the club ladder in the Boise Club. Boise's 1957 City Tournament started Jan. 16th. It is a single round-robin with prizes to be on a Class A and Class B basis.

NAMPA CLUB NEWS

The annual Nampa winter tournament is underway with DR. DAVID GROENIG and A. B. ELLIS leading. They each have $7\frac{1}{2}$ - $\frac{1}{2}$ scores drawing with each other. JERRY STANKE 5-3 is third. Others are ROY PARKER 4-4, R. BATTIE 3-3 and with at least 2 wins apiece are E. H. HORSTMAN, FRANK O'BRIEN and JOHN WILLIAMSON.

1956 club officers are C.E. HARRIS, President, JERRY E. STANKE, T.D., ROY PARKER, Sec.-Treas. and CARL SOLTS, Vice-Pres.

RUPERT CLUB NEWS

Rupert's 1957 elections on Jan. 9 resulted in LARRY ALTON of Burley being re-elected President. BOB CAMPBELL was re-elected Sec.-Treasurer and I.E. PATTIE was elected Vice-President.

Rupert started its round-robin City Tournament on Jan. 16th. The club maintains a ladder tourney. Current leaders - BOB CAMPBELL, CHARLES FALK and LARRY ALTON.

POCATELLO CLUB NEWS

The Pocatello Club has had several get together this fall. A round-robin is in progress with R. KAY HART $8\frac{1}{2}$ - $1\frac{1}{2}$, MEL SCHUBERT $4\frac{1}{2}$ - $\frac{1}{2}$ and BRYANT HANSEN 4-0 leading.

IDAHO STATE TOURNAMENT. BOISE ON FRI. FEB. 15, SAT., FEB. 16 AND SUN. FEB. 17. 6 rounds

BRITISH CHAMPTON BARDEN
 RATES A GAME BETWEEN THE
 YUGOSLAV AND BULGAR ACES

T E S T

COVER THE GAME SCORE &
 EXPOSE LINE BY LINE AS
 YOU SCORE YOUR POINTS.

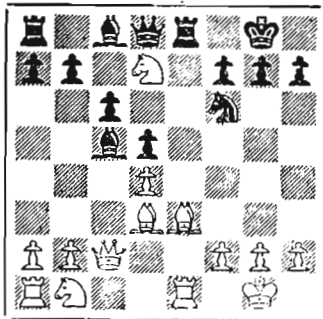
YOU ARE BLACK IN THIS WILD CENTER COUNTER GAMBIT Padevski vs Karaklaic.
 OPENING MOVES: 1 P-K4, P-Q4; 2 PxP, N-KB3; 3 P-Q4, NxP; 4 P-QB4, N-N3; 5 N-QB3,

- | | | | |
|----|------------|-----------|--|
| 5 | ...P-K4 | 5 POINTS | This deep sacrifice is your partner's specialty. |
| 6 | PxP | | 3 points also for ..P-KN3, 2 for ..N-QB3, or-B-B4 |
| | ...QxQch | 2 POINTS | Other moves give less compensation for the pawn. |
| 7 | NxQ | | |
| | ...N-QB3 | 2 POINTS | Or 2 points for ..B-K3. |
| 8 | P-B4 | | |
| | ...B-K3 | 3 POINTS | Gaining time. |
| 9 | P-QN3 | | |
| | ...O-O-O | 3 POINTS | Or 3 points for ..N-N5 forcing 10 N-K3. |
| 10 | N-KB3 | | |
| | ...N-N5 | 3 POINTS | Breaking in on the Queen file. |
| 11 | N-K3 | | |
| | ...B-QB4 | 3 POINTS | Black is not yet ready to control the Q file. |
| 12 | P-QR3 | | |
| | ...N-Q6ch | 3 POINTS | The rooks can be doubled if White captures. |
| 13 | K-K2 | | |
| | ...NxPch | 1 POINT | |
| 14 | K-B2 | | |
| | ...N-Q6ch | 2 POINTS | 1 point for ..R-Q2 |
| 15 | BxN | | |
| | ...RxB | 1 POINT | |
| 16 | R-QN1 | | |
| | ...R-K1 | 4 POINTS | Threatens ..B-KN5. 2 points for ..KR-Q1, which allows White to contest the Q file. |
| 17 | K-K2 | | |
| | ...R/Q6-Q1 | 3 POINTS | 1 point for ..R-Q2. This square may be needed. |
| 18 | B-N2 | | |
| | ...P-QR4 | 3 POINTS | Fixes White's Q side pawns with threat of .P-R5 |
| 19 | P-QR4 | | |
| | ...BxN | 3 POINTS | Black wins a pawn. 3 points if you selected this as your previous move. |
| 20 | KxB | | |
| | ...B-B4 | 2 POINTS | Now if 21 QR-Q1, RxR; 22 RxR, B-B7. |
| 21 | QR-QB1 | | |
| | ...R-Q6ch | 2 POINTS | |
| 22 | K-B4 | | |
| | ...RxNP | 4 POINTS | Now if 23 KxB, RxB. |
| 23 | B-B3 | | |
| | ...NxRP | 3 POINTS | The same idea |
| 24 | BxP | | |
| | ...B-K3 | 3 POINTS | Or 2 points for ..B-N3 which also wins. |
| 25 | N-Q4 | | |
| | ...R-Q6 | 2 POINTS | 2 points for ..R-N7; but nothing for ..R-QR6. |
| 26 | N-N5 | | |
| | ...N-B4 | 4 POINTS | The beginning of a sharp final attack. Only 2 points for ..P-QN3. |
| 27 | NxP | | |
| | ...P-N4ch | 6 POINTS | Nothing for anything else. |
| 28 | KxP | | |
| | ...R-N1ch | 3 POINTS | Now if 29 K-B6, N-K5ch; 30 K-K7, R-Q2 mate. |
| 29 | K-R6 | | |
| | ...R-N3ch | 3 POINTS | |
| 30 | KxP | | |
| | ...B-B4 | 4 POINTS | Threatens mate in 2. |
| 31 | P-R4 | | |
| | ...R/Q6-N6 | 4 POINTS. | White resigns to threat of ..R-N1 d ch |

68-81	Master
58-67	EXPERT
49-57	CLASS A
30-48	CLUB PLAYER

SEATTLE VERSUS AMSTERDAM

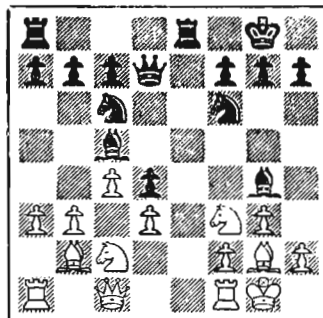
PRESENT POSITIONS IN SEATTLE PLAYERS' WHITE GAMES



B.A. Weisscher v. K. Vogel
after 14 N/K5xN,



F.H. Weaver v. H. van Kalken
after 15 N/B3-Q1,



V.W. Bever v. J. Roos
after 14 P-QR3,

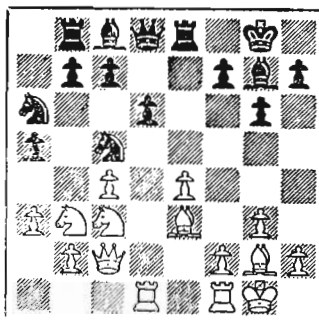
The postal chess match between a Seattle team and Amsterdam which began last July is proceeding at the rate of two moves a month. The December issue of Chess Letter depicted the games in which Seattle players had the Black pieces, with fairly even games.

Chess Letter will picture the positions from time to time.

If you were delegated to adjudicate the games, how would you decide?



Dan Wade v. G. Fikke
after 13. PxN,



Max Bader v. J. Muller
after 14 N/Q4-B3,



POSTAL CHESS

R.R. MERK 
POSTAL CHESS EDITOR
1026 E 71 SEATTLE 15

1/6	56B-4A	Haynes	1	Squire	0	48
	56B-4B	Haynes	1	Squire	0	48
1/9	56B5A	Phillips	1	Tresidder	0	33
	56B1A	Skoglund	1	Squire	0	54
1/12	56B8A	Mills	1	Miltmore	0	30
	56B8B	Mills	1	Miltmore	0	30
1/14	56B8A	Watson	1	Miltmore	0	24
	56B8B	Watson	1	Miltmore	0	24
1/15	56A2B	Weaver	1	Dickson	0	53
1/21	56B4A	Squire	1	Miltmore	0	28
	56B4B	Squire	1	Miltmore	0	28
1/22	56B9B	Benson	1	Waldron	0	33
1/23	56B9B	Phillips	1	Benson	0	18
1/29	56B7A	Spatz	1	Van Natta	0	64
	56B7B	Spatz	1	Van Natta	0	64

My Queen was strong,
I thought it wrong
To keep her in her corner.
So I got smart,
Gave her a start,
And now, too late,
I mourn her.

W.D. Nicnols
Fort Rock,
Oregon

Phillips moves up to the A Division.

We have word from Mrs. Allen that Mr. William P. Allen, of Bremerton, Wash. broke his hip last November in a fall and has been confined to his home since. Bill is an old time member, who first joined with us in January 1951. He will be glad to get a card from old friends. His address is Rt. 4, Box 2458, Bremerton. Mrs Allen says he is progressing now, but slowly.

Mrs. Opal Aldridge has been in the Marine Hospital in Seattle for several weeks, and expects to be back in her home shortly. She wants to continue her games, and if her opponents will be patient and wait a while for her next move, it will be greatly appreciated and give her much pleasure.

Mr. V.W.Bever, of Bellevue, Wash., has come up with a new way of playing chess. He has organized six local players into a telephone chess tournament. Each player plays one game with each of the others with a minimum of one move a day. Any players in the Seattle telephone area who may be interested in joining in a new section of this telephone chess, can contact Mr. Bever at Gibson 3636. He has volunteered to promote these tournaments for any number of local players who might wish to participate. The six now playing are Bever, Roberts, Raleigh, Jenner, Davidson and Merk. These six are all retired, and the telephones are kept very busy. Results of this first telephone chess tournament should be available for next month's issue. Other localities might organize a similar group for such a chess tournament. If so we would like to hear about it and publish results.

PUBLISHER'S NOTE: The small picture at the top was expected to resemble Bob Merk. It is printed with a rubbery type of stencil that twisted one way and another during the run of copies, so it is a matter of chance whether the copy you get shows him smiling, leering, or frowning. Flipping through several hundred copies is like a moom pitcher, so if you save your copies for the next couple of years you can have fun too.

POSTAL CHESS RATINGS

"A" Division

Bever	1656
Baron	1630
Coubrough	1613
Mage	1610
Parsons	1607
Wade	1600
Weisscher	1591
Skarsten	1582
Kaffenberger	1570
Brookshire	1509
Weaver	1485
Luters	1472
Edberg, R.	1436
Sween	1429
Dickson	1404
Knapp	1403
Phillips	1403
Woodward	1400
Carter	1383
Howard	1380
Cairncross	1307
Husby	1200

"B" Division

Hamilton	1325
Spatz	1319
Laine	1274
Merk	1263
McDonald	1252
Haynes	1238
Edberg, A.Y.	1220
Van Natta	1212
Spencer	1185
Rogers	1178
Tresidder	1152
Nichols	1149
Gordon	1142
Lyberger	1136
Raleigh	1134
Mills	1110
Youngman	1099
Watson	1098
Lee	1088
Bell	1050
Bennett	1050
Bowerman	1050
Gemar	1050
Pierce	1050
Parker	1050
Scripps	1050
Pifley	1050
Benson	1045
Skoglund	1040
Squire	1026
Aldridge.	1010
Skinner	996
Notter	920
Waldron	847
Adamson	781
Jacobson	710
Miltmore	686

POSTAL CHESS

POSTAL CHESS IS A GOOD WAY TO IMPROVE YOUR GAME. You can take enough time to thoroughly study each move. You can enter against any strength of competition and game results will soon give your rating its proper value.

AN ADVANTAGE OF PLAYING NORTHWEST PLAYERS is that the games proceed smoothly with overnight mail delivery. Ratings are adjusted and published each month.

EACH PLAYER IN A FIVE-MAN SECTION PLAYS TWO GAMES WITH EACH OF THE OTHERS.

THE ENTRY IS 50¢. A 6-MONTH SUBSCRIPTION EXTENSION IS THE PRIZE.

COMPLETE RULES ARE SENT.

SEND ENTRY TO POSTAL EDITOR

WASHINGTON CHESS LETTER

1086 E. 71st ST. SEATTLE, 15, WASH.

Return postage guaranteed
Form 3547 requested.

B. D. Strachan
5103 N.E. 15 AVE
Portland 11, Ore

ea/57

