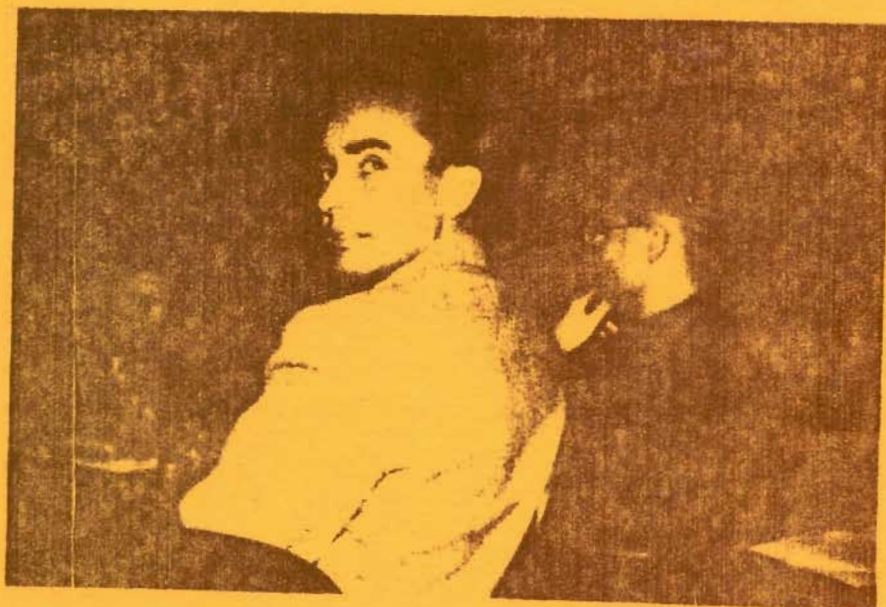


WASHINGTON

CHESS

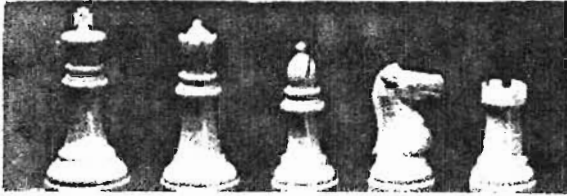
LETTER

JANUARY 1957



STATE CHAMPION

SUBSCRIPTION PRICE OF TWO DOLLARS A YEAR INCLUDES MEMBERSHIP IN THE W.C.F.



CHESS LETTER

Editor D. E. Wado
11023 25th N. E. Seattle, Wash.

Circulation R. R. Merk
1026 E. 71st. Seattle, Wash.

Publisher F. H. Weaver
501 Olympic Place Seattle, Wash.

January Contributors: George Bishop, Don Eilmos and Dennis Hamilton.

OTHER W. C. F. OFFICERS

President Dr. Griffith H. Parkor
416 Hyde Bldg. Spokane, Wash.

Vice-President Max Mage
2437 55th S. W. Seattle, Wash.

Secretary Peder Husby
Route One E. Stanwood, Wash.

Treasurer W. H. Raleigh
4312 Woodland Park Ave. Seattle, Wash.

Publicity Director Don Eilmos
1303 44th Ave. S. W. Seattle, Wash.

Tournament Director Robert Edberg
Route One Tieton, Wash.

Tournament Director James McCormick
11035 Beacon Ave. Seattle, Wash.

AFFILIATED W. C. F. CHESS CLUBS

Seattle, Spokane, Tacoma, West Seattle, McNeil Island, Kitsap County, Tri-Cities and Seattle Boeings Chess Clubs.

Room for Walla Walla, Yakima, Olympia, Longview-Kelso and other chess clubs.

Participate in coming events - The P.S.O. State Speed and State Junior tournaments.

NORTHWEST AREA CHESS ENIGMA

WCF Secretary Peder Husby recently received a card from that unknown, unmapped, mysterious area (chesswise) of Washington State. We refer to the area between Everett and the Canadian border. At the last International, a large number of players from this area appeared. Nothing is known of activities in the Northwestern corner so we would appreciate it immensely if some player with journalistic leaning would take pen in hand and enlighten us. The card to Husby was printed. It read as follows - Regular Meeting of Skagit County Chess Club Thursday, Dec. 20th 1956 at Mount Vernon YMCA. If you are entered in the tournament, don't fail to be there! An absence is a forfeit! There will be discussion on possibility of having Samuel Reshevsky or Al Horowitz with us sometime next year.

Results of election of officers held at Dec. 6 meeting: Robert McNary president; Jerry Fader, vice-president and Robert Fader, secretary-treasurer. The card was mailed from Anacortes.

JOHN DEWITT WAS HERE

On Tuesday night, Dec. 4th, the snow started falling in Seattle. On the heels of the storm came John DeWitt, former Chess Letter editor and strong Washington tournament player. He was in the northwest only briefly on business and then back again to a Dayton, Ohio home. John may again be a resident of Seattle after he is released from the service next May.

SEATTLE CLUB ACTIVE

The most active spot in Washington chessdom was the Seattle C.C. during the past month. This refers to a period Nov. 18th to Dec. 16th. Puget Sound League matches, the Woodpushers and the State Tourney kept activity in the club room every weekend. Also on Friday, Dec. 22nd there was a 10 second per move speed tourney and another one the following Wednesday night. There were coffee and doughnuts Friday, Dec. 28th. On Friday, Jan. 4th, will be the annual club election.

ONE YEAR (12 ISSUES) AND MEMBERSHIP IN WASHINGTON CHESS FEDERATION IS \$2
SEND MONEY TO W.H. RALEIGH, 4312 WOODLAND PARK AVENUE, SEATTLE 3, WASH.

1957 PUGET SOUND OPEN

FEB. 22-24

The coming PUGET SOUND OPEN will be something special this year. It will start at 1:30 p. m. on Washington's birthday, February 22nd. Play will continue through Saturday and Sunday. There will be seven rounds instead of the usual six. The late starting time on Friday should make it nice for out side of the city players who can leave for the tournament at a reasonable time instead of the crack of dawn. All are invited. It is hoped a contingent out of Portland will be on hand to avenge the Oregon Open when the top eight spots in that 37 player affair were confiscated by Washingtonians! Perhaps the Kelso-Vancouver players can make it again headed by Mr. MITSON, who handled MCCORMICK so well last time he visited Seattle during the Seafair.

We would like to see players from the newly reorganized Olympia Club here headed by CHARLES JOACHIM seeking to prove once an expert, always an expert. A nearly sure bet is the participation of the Tacoma juniors, HAMILTON and LOUGHEED, we hope. Seattle should be represented by MCCORMICK, WADE, MAKENS, and possibly the up-and-coming GRIFFITHS and several others. Skipping back to the City of Destiny, don't overlook VIC PUPOLS! He has NEVER lost a tourney or a match game to MCCORMICK, WARNER or WADE. Another quick look at the Southwest, and we are hoping for the strong DICK PARSONS and DR. MURRAY to put in an appearance.

Perhaps a forlorn hope, but we are hoping for players from Kitsap, north west Washington and British Columbia to enter. Outside of our Woodpusher king, IT. LEININGER, we haven't had representatives from those areas in years in our tournaments.

Moving eastward, let us hope to see once again such sterling contenders - HOGE, FALK and NELSON - once again from Yakima along with our State Champ, BOB EDBERG and his wife ARLENE.

In the "far east" we have many players such as TED WARNER, GORDON CORNELIUS, RAY KRONQUIST, DR. MAX BAUMWELL and DR. GRIFFITH PARKER who would make it a better event by playing.

We did not even try to get all of the names of those who might enter. Too many players in Washington and Oregon for that. Names of some who are almost probables are RUSSELL VELLAS, DON EILMES, HOWARD WEAVER and MAL SKARSTEN.

ENTRY FEE \$3.50 Seniors, \$2.00 Juniors.
(Juniors are 18 and under.)

REGISTRATION ONE P. M. FRIDAY, FEB. 22.

TIME CONTROL 35 moves in $1\frac{1}{2}$ hours.

ROUND ONE - 1:30 ROUND TWO - 6:30 Fri.

ROUND THREE - 9 A. M. Saturday, Feb. 23

ROUND FOUR - 1 P. M. ROUND FIVE - 6 P.M.

ROUND SIX - 9 A. M. Sunday, February 24.

ROUND SEVEN - 1 P. M. GUARANTEED \$25 FIRST PRIZE. MEDIAN TIE-BREAKING SYSTEM.



ROBERT EDBERG WINS STATE CHAMPIONSHIP WADE AND PUPOLS TIE FOR SECOND PLACE IN FINALS

ROBERT EDBERG of Ticton, Washington is the 1957 Washington State Chess Champion. In games played December 8th and 9th 1956, Edberg won three and drew two to compile a 4-1 score to take the state's blue ribbon special. The new champion needed every point to win as VIKTORS PUPOLS of Tacoma and DAN WADE of Seattle tied for second place each with $3\frac{1}{2}$ - $1\frac{1}{2}$, only $\frac{1}{2}$ point behind the winner.

EDBERG is a worthy successor to OLAF ULVESTAD of Seattle, 1956 champion. Last year, Edberg met Ulvestad in the last round needing a win to take the title and at one point in that game had a winning advantage but blundered it away and allowed Ulvestad to escape with a draw which was enough to win the title for him. In last year's tourney, Ulvestad scored $3\frac{1}{2}$ - $1\frac{1}{2}$ followed by Edberg and Pupols each with 3-2. Others in last year's tourney were TED WARNER, BILL BILLS and VELLIAS.

This year, Edberg was in the driver's seat in the last round. He had won three and drawn DON EILMES in his first game while his last round opponent, Dan Wade, had won two and drawn with Eilmes and Pupols. So it was up to Wade to win if he was to take the title. Although Wade scored an early advantage against Edberg's Sicilian Defense, it soon dissipated into a position impossible to win. This situation was an exact copy of the Seattle Seafair Tournament last summer when Wade had to win his final game with Edberg to take the Seafair crown. Then too, Edberg played Wade to a draw to take the crown. In both the Seafair and in the State Closed, the difference was Edberg's ability to defeat Pupols while Wade played draws with Pupols in both events. Pupols could have won both the Seafair and the State by merely drawing with Edberg in both events.

Edberg has twice taken the Montana crown, won the Seattle Seafair, won the Yakima County title and is now Washington State Chess Champion.

Edberg and Pupols, along with Spokane's GORDON CORNELIUS, scored three wins three draws and no losses each to tally $4\frac{1}{2}$ - $1\frac{1}{2}$ behind GEORGE BISHOP with 5-1 (four wins, no losses and two draws) in the WASHINGTON OPEN held in Spokane. It was a forlorn hope that this quartet along with EILMERS ZENGALIS and OLAF ULVESTAD would form a fearsome six to battle for the 1957 State Championship. However, it was not to be. Bishop moved to California. Ulvestad has dropped from chess since an Oregon Open held many months back. Zengalis has been unable to compete lately. Cornelius was unable to make the trip to Seattle. This left Edberg and Pupols of the preferred six ready and willing to play. Digging a bit lower into the Washington Open alternates, TOM MAKENS (6th with 4-2) and DON EILMES (9th with $3\frac{1}{2}$ - $2\frac{1}{2}$) accepted invitations to compete. Players below 9th in the 24 player Open weren't considered. A last minute search for more chess muscle failed for various reasons to obtain RUSSELL VELLIAS, 1955 Open Champ, TED WARNER, 1954 Open Champ or J. L. SHEEPS, many times Washington State Champ. Only as a last desperate resort, D. Wade and F. H. WEAVER of the Washington Chess Letter were invited and accepted so the others in the tourney would have someone else to play with.

Wade and Pupols tied for second. Pupols defeated Makens, Weaver and Eilmes drew with Wade and lost to Edberg. Wade drew with Pupols, Eilmes and Edberg and won over Makens and Weaver. Tom Makens placed fourth with 2-3 while Eilmes and Weaver ended in a last place tie each with 1-4. Makens lost three tough games to the three leaders and won two easy games from the tail-enders. Eilmes drew with Edberg and Wade on Saturday and lost all three Sunday.

Summary of 1957. STATE CHAMPIONSHIP at Seattle Chess Club

CONTESTANTS	HOME TOWN	-1-	-2-	-3-	-4-	-5-	W	L	D	SCORE	PLACE
1. Robert Edberg	Tieton	W-5	D-6	W-3	W-4	D-2	3	0	2	4 - 1	First
2. Dan Wade *	Seattle	D-6	D-3	W-4	W-5	D-1	2	0	3	3 $\frac{1}{2}$ -1 $\frac{1}{2}$	2 - 3
3. Viktors Pupols *	Tacoma	W-4	D-2	L-1	W-6	W-5	3	1	1	3 $\frac{3}{4}$ -1 $\frac{1}{4}$	2 - 3
4. Tom Makens	Seattle	L-3	W-5	L-2	L-1	W-6	2	3	0	2 - 3	Fourth
5. F. H. Weaver *	Seattle	L-1	L-4	W-6	L-2	L-3	1	4	0	1 - 4	5 - 6
6. Don Eilmes *	Seattle	D-2	D-1	L-5	L-3	L-4	0	3	2	1 - 4	5 - 6

* Unbreakable ties for second and fifth places.

Edberg and Eilmes played their second round game Saturday afternoon and ditto Wade versus Pupols and Weaver versus Makens. Makens and Pupols played their first round game Saturday morning while first round games between Edberg-Weaver and Eilmes-Wade were played Saturday night.

Robert Edberg has compiled a terrific record during 1956. He started in poor fashion with a 2 $\frac{1}{2}$ -3 $\frac{1}{2}$ score in the last Puget Sound Open. Since, he has lost only twice in tournament play while winning 27 and drawing 17 - only two losses in 46 tourney and match games before finally losing a third game to J. TREMBOIS of the Boeings Club. Since losing to JIM MCCORMICK in the Ore. Open, Edberg has played 28 tournament and match games in a row before losing.

TOURNAMENT	WON	LOST	DRAWN	RANK	ENTRANTS	EDITOR'S NOTE:
Puget Sound Open	2	3	1	15	20	At Edberg's wish,
Nevada State Open	2	1	4	9	27	his fabulous perform-
Inland Empire Open	3	0	3	5	40	ance in the Yakima
Oregon State Open	4	1	1	6	37	tourney is not in-
Montana State Champ.	4	0	1	1	32	cluded in his record.
Seattle Seafair Open	4	0	2	1	24	It was a minor event.
International Match	1	0	0	Board #3	45 Boards	
Wash. State Open	3	0	3	3	24	
Seattle vs. West Seattle	2	0	0	Board #1	5 Boards	
Wash. State Champ.	3	0	2	L	6	
Seattle vs. Boeings	1	1	0	Board #1	5 Boards	
	29	6	17	PERCENTAGE	.720	

The Champ's leading competition also had very good records during 1956.

VIKTORS PUPOLS	W	L	D	RANK	ENTRANTS	DAN WADE	W	L	D	R. E.
Inland Empire Open	4	0	2	1	40	1956 Puget Sound League	5	0	5	2- 5
Oregon State Open	3	0	3	5	37	Puget Sound Open	2	1	3	7-20
Seattle City Open	4	1	1	1	9	Seattle Club Champ.	6	1	0	1- 8
Seattle City Closed	4	0	0	1	5	Inland Empire Open	5	1	0	3-40
Seattle Seafair Op.	4	1	1	2	24	Seattle City Closed	1	2	1	4- 5
Wash. State Open	3	0	3	4	24	Seattle Seafair Open	3	0	3	2-24
Tacoma vs. Boeings	1	0	1	Board 1	5 Bds.	International Match	1	0	0	5-45
Wash. State Champ.	3	1	1	2	6	Seattle vs. W. Seattle	1	0	1	2- 5
	26	3	12	PERCENTAGE	.780	Seattle vs. Olympia	1	1	0	1- 4
						Wash. State Champ.	2	0	3	2- 6
						Seattle vs. Boeings	1	1	0	2- 5
Only 3 losses, 1 to Bishop and 2 to Edberg and winner of 3 out of 7 tournaments.						PERCENTAGE	.706			28-7-16

TOM MAKENS scored well in the Inland Empire Open with 4-2 including draws with Warner and McCormick, and only one loss. Next he finished 7th in the big 37-player Oregon Open with 4 $\frac{1}{2}$ -1 $\frac{1}{2}$. Then Makens scored 4-2 in the Wash. Open and lost only once (to Edberg) and drew both Pupols and Cornelius. In P.S.L. Play he has won 3, lost 0 and drawn 3 (includes non-league Olympia match). He scored 2-2 in the Woodpushers and 2-3 in the State Closed. .636 Average. W 17, L 8, D 8.

MCCORMICK WINS LONG ISLAND TITLE

Because of the WCL publication dates, this news is a trifle belated but what has time got to do with chess? Anyway, let those who have no other communication with the chess world other than the pages of the WASHINGTON CHESS LETTER be informed that the LONG ISLAND, NEW YORK AMATEUR CHESS CHAMPIONSHIP TOURNAMENT, held at Brooklyn's Central YMCA Nov. 22nd to 25th, was won by JAMES H. MCCORMICK JR. our Washington State Junior Chess Champ for 1956. Jim scored $5\frac{1}{2}$ points in the first six rounds to lead his closest pursuers by one point as reported in last month's C. L. Alas, Jim lost his last round game to EUGENE STEINBERGER of Elmhurst, N.Y. and both Steinberger and McCormick ended on top with $5\frac{1}{2}$ - $1\frac{1}{2}$. But good fortune !! The tie was broken under the rules of the U. S. Chess Federation in favor of Jim McCormick while Steinberger was awarded second.

Although the last round was finished at 11 p.m. on the 25th, the winning of the title was not decided until 12:30 a.m. when adjudicator MAX PAVEY, a Senior Master of the U.S.C.F. and a famous internationalist, declared drawn the game between JACK SOUDAKOFF and JOHN T. WESTBROCK of Brooklyn. Soudakoff had winning chances and if the game had been declared in his favor he also would have had a $5\frac{1}{2}$ - $1\frac{1}{2}$ score and would have won the tourney under the tie-breaking system. Soudakoff finished third and Westbrook fourth each with a 5-2 score.

A total of 31 contestants took part in the tourney which was eligible only to players below the Master class. Tourney Director was KENNETH HARKNESS.

McCormick defeated WILLIAM RATCLIFFE JR. of N.Y., N.Y.; VICTOR KOSA of Brooklyn; FRANCIS E. CONDON of Bogota, N. J.; drew his game with JACK SOUDAKOFF; won over FRED ENGELMAN of Brooklyn and EDWARD VANO of New York before losing.

James McCormick	$5\frac{1}{2}$	11 Rhys Hays	4	22 Edward Westing	$2\frac{1}{2}$	HE IS BACK! POINT FOR JIM IN P.S. OPEN !!
Eugene Steinberger	$5\frac{1}{2}$	12 Florencio Flores	4	23 Thomas Felle	$2\frac{1}{2}$	
Jack Soudakoff	5	13 Gustav Krauhs	4	24 Harold Winston	$2\frac{1}{2}$	
John Westbrook	5	14 Wm. Steinklein	4	25 Seymour Mann	$2\frac{1}{2}$	
Fred Engelman	5	15 Wm. Ratcliffe Jr.	4	26 Robert Seaman	2	
Carmino Nigro	5	16 Sydney Wooldridge	4	27 Wayne Farnham	2	
Sanford Greene	$4\frac{1}{2}$	17 Joseph Tamargo	$3\frac{1}{2}$	28 Felix Lubliner	2	
Edward Vano	4	18 Joseph Gennuso	$3\frac{1}{2}$	29 Monroe Fisch	1	
Harry Kleeger	4	19 K. Ouchi	$3\frac{1}{2}$	30 Victor Kosa	1	
William Saffern	4	20 Francis E. Condon	3	31 Vito Russo	1	
		21 Richard C. Moran	3			

The McCormick chess record for 1956 is a good one. BATTING AVERAGE .753.

Tournament	Won	Lost	Drawn	Rank	Entrants
Puget Sound Open	3	1	2	5	20
Puget Sound League	6	2	2	Board 1	5 Boards
Wash. Junior Champ.	5	0	1	1	11
Inland Empire Open	4	1	1	4	40
Oregon Open	5	0	1	1	37
Seattle Open	4	2	0	3	9
Seattle Closed	2	1	1	2	5
San Francisco Prelims.	6	0	0	1	7
Colorado Open	4	1	1	3	24
Seattle Seafair Open	2	1	3	7	24
International Match	1	0	0	Board 4	45 Boards
McCormick vs. Dr. Murray	3	2	0		
Long Island, N. Y. Amateur	5	1	1	1	31



LETTERS TO YE ED

MR. GEORGE E. WOOD, Librarian at McNeil Island Pen. writes: It appears that I have messed up on our participation in your Puget Sound League tournament. I was surprised to note when the December issue of the WCL arrived on Dec. 7 that the matches had commenced. A few days later I located the October and November issues with one of the chess club boys and read that you had invited inquiries. In case our club is still welcome in League circles and some of the teams wish to play us in addition to their scheduled tournament matches, I am sure our boys would be delighted to have an opportunity to entertain them. Matches could be held Saturday or Sunday afternoons; sailing hours at the Steilacoom Dock (departure to and return from McNeil Island) are 11:10 a.m. and 4:50 p.m. Write Mr. George E. Wood, Librarian, Lock Box 500, Steilacoom, Washington.

CHARLES JOACHIM sends us a clipping from the Daily Olympian: Officers were elected for the coming year at the last meeting of the Olympia Chess Club. ELLIS AYERS and CHESTER HARRISON were elected honorary co-chairmen for their work in previous years and their interest in making chess another fine community activity. Other officers are CHARLES JOACHIM, president; PHIL STYMANS, captain; HARRY PARMELEE, federation representative, and JOHN MACKENZIE, secretary. Club meetings are on Monday evenings at 8 o'clock in the Community Center. All persons, beginner, social or expert level, are invited to attend.

W. H. RALEIGH, Treasurer, writes: It seems fitting, at this time of year when Good News and Best Wishes are the order of the day, to bring you this report, which shows that your labors have not been in vain. This report, dated Dec. 15, covers business since the last annual meeting. Receipts total \$394.20. Subscriptions - \$262.00, Tournaments and League - \$68.00 and Postal Chess - \$64.20. Expenses are \$244.46 leaving an operating profit of \$149.74. Equipment bought was \$86.99 leaving a balance of \$62.75. Add to this cash on hand at the first of the year \$68.08 and our total cash on hand and in the bank today totals \$130.83. Subscriptions in the number of 186 are the highest ever. Special credit must be given BOB MERK for so ably handling the Postal Chess Division, HOWARD WEAVER, whose publishing efforts have enhanced the value of the Letter, and to DAN WADE on his selection of CL material.

DENNIS HAMILTON sez: I suppose the P. S. Open and the State Junior are coming tournaments. I'll have to play in the P. S. Open if I want to get in shape to win the Junior. Good old R. A. KARCH has returned to Tacoma to bother our top players and thus far the box score is - Karch 1 Hamilton 1 and Karch (CENSORED) Loughood - 1½. Not for publication - also Loughood will skin me. Why haven't our recent WCF tournaments been rated? (See Tournament Director - Ed.)

BOB KITTREDGE writes: Just want to congratulate you and your co-workers on an excellent job being done on the C. L. I'm looking forward to your publishing more names in the Federation Directory as appear in the Dec. issue. A magazine reads better when it contains names and events of which we have a first hand knowledge. My congratulations to ARLENE EDBERG who has apparently taken over Bob's rating in the "A" Division of the Postal Chess Ratings. Add my name to those who have received books and lists from A. CURTIS in England. Any Spokane player wishing to see the lists - see me. Better watch out for DICK PARSONS of Centralia. Saw a chess book for him going through the mail, so everyone be careful. Well, I am going to practice up on my chess and see if I can improve my rating this coming year. I know it dropped over 100 points, but hope not too many more, I hope. I will try my luck in the Spokane City Championship and see if there will be a different result than we've had the last three years. I'm going to try anyway! P.S. Also wish everyone a Merry Christmas and a Happy New Year.

PUGET SOUND LEAGUE

On Sunday, Dec. 9th, Tacoma downed West Seattle in a mixed up affair $5\frac{1}{2}$ to $2\frac{1}{2}$ with first board games between Parsons and Holmes left to be played. Hamilton says the Tacoma - West Seattle match was all fouled up, with the first board players not playing at all. Parsons failed to deliver for West Seattle because of the notice in the Chess Letter (which, of course, was printed up before the team captains decided to carry through come high water and that other thing). I sent him a card a week before the match but wasn't definite enough in saying we were playing on the original date. Holmes seemed willing enough to play Parsons some other time (as we already have enough points to win the match) but I haven't heard from either of them as to whether they have played yet. (quote, unquote, Hamilton.)

The change in dates also lost the services of Weischer to the West Seattle outfit. Members of both teams were at the Woodpushers the week before the match so it should have been no secret. The sudden decision to play on the original date however, apparently was a secret to somebody.

TACOMA CHESS CLUB	$5\frac{1}{2}$	WEST SEATTLE CLUB	$2\frac{1}{2}$
Vernon Holmes		Dick Parsons	
Charles Howitt	1	Max Mage	1
Leslie Coubrough	1	Eugene Vukonich	1
Ron Loughheed	2	F. M. Howard	0
Dennis Hamilton	$1\frac{1}{2}$	Stuart Woodward	$\frac{1}{2}$

Loughheed's blanking of Howard seemed to be a grudge fight resulting from the Woodpushers, Loughheed, of course, is the one with the grudge. Both of their games swiveled around blunders on both sides and the pressure on the 2nd game was greater due

to the fact that it was the only unplayed game left, bringing all eyes (and comment) to that board. This proved too much for both players, Loughheed blundering away the game, but Howard moved too soon and blew a clear win. (By Hamilton)

On Sunday, Dec. 16th at the Seattle Chess Club, the host team bounced away to a safe $5\frac{1}{2}$ to $1\frac{1}{2}$ lead over the Bocings Club. If the Seattle Club team looked good up to then, it looked like two bits afterward as Bocings swept the remaining three games. Final tally, Seattle Chess Club $5\frac{1}{2}$ Bocings Chess Club $4\frac{1}{2}$. Only two wins by Griffiths saved the favorites from an upset. John Gell scored $1\frac{1}{2}$ over Erickson for Bocings best showing while Trembois, out foxed by Edberg in their oponor, came back to thoroughly trounce the State Champ in their second game. Bader was ground down in a 70 plus mover by Wado and then came back to get even with an 80 move win. Eilmes, who had lost quickly to Makens the week before in the State Championship, played two draws with Makens in this match. Makens should have lost one of these games. Erickson was extremely lucky to get his draw. As an after thought, Seattle was very lucky to win the match at all and will have to play much better if it is going to keep the championship. Since this match Makens has defeated Griffiths in a ten game match 6 to 4 (4 wins, 2 losses and 4 draws) so will be the regular 3rd board player on the team while Griffiths probably will be moved up to 4th board.

SEATTLE CHESS CLUB	$5\frac{1}{2}$	BOEINGS CHESS CLUB	$4\frac{1}{2}$
Robert Edberg	1	Jim Trembois	1
Dan Wado	1	Max Bader	1
Tom Makens	1*	Don Eilmes	1*
David Erickson	$\frac{1}{2}$	John Gell	$1\frac{1}{2}$
Charles Griffiths	2	Carl Hanson	0

NEXT ON THE PSL MENU!

Jan. 6 at 1 p.m. Tacoma at Seattle
Jan. 13 1 p.m. West Seattle and
Bocings meet at the Seattle club.

Jan. 27 at 1 p.m. Tacoma-Bocings,
at the Seattle Chess Club.
Feb. 3rd W. Seattle vs. Seattle.

PLAY IN THE WASH. STATE SPEED CHAMPIONSHIP! SUNDAY, JANUARY 20th AT 11 A. M.

LAST CHANCE TO ENTER THE SOLVERS' CONTEST

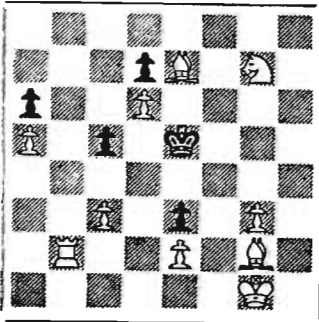
For the second month of the contest, we have a single position to challenge the analytical ability of our contestants. We offer 1 point for sending in any solution, plus 5 more if it is the correct one. It is White to play and win, and your analysis need only project the position to a book win. Don't be fooled by the too obvious.

In the absence of George Bishop, who is in California on business, your Class B editor is hard pressed to explain some of the reasons for the solutions we have for last month's problems, and may even have to appeal for help if we get any objections, although the positions are taken from unimpeachable sources, and the solutions have withstood the test of having been printed and discussed in international chess literature. Correct solutions have been received from the following astute players for #1:

Bruce Oldham	Bob Merk
Einar Bloomquist	Horton Thompson
John Laine	R.G. Spencer
Mal Skarsten	Cliff Dolph
Peder Husby	Alfred Carter
Max Mage	C. Ballantine

LATE STARTERS!

HERE IS YOUR LAST CHANCE TO WIN FAME & FORTUNE. SOLVE THIS ONE AND START NOW. (5 pts.)



WHITE MATES IN 3

Contestants who did not win 5 points in last month's effort are invited to join the late starters.

This clever endgame was composed by one of our readers, Phil Dolph. The first move is a dilly and completely escaped your editor, who had to peek at the solution. Here is a hint: Any block-head can do it.

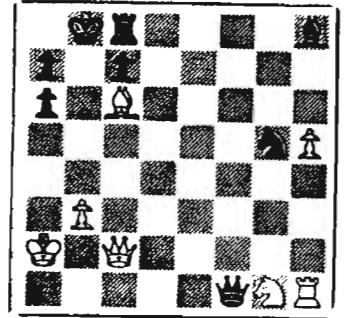
SEND SOLUTIONS TO F.H.WEAVER, 501 OLYMPIC PL. SEATTLE 99, BEFORE FEBRUARY 1,

An additional, bonus point is awarded Husby, Ballantine, Thompson. They stated that the Knight at B3 moves first. This was designated in the official solution, (possibly to clear the way for QxBP if Black should play ...N-N5). After the sequence 1. ...N/B3-Q6; 2. PxN, NxP; the Queen has nowhere to go. Now if 3. N-N5, PxN; 4. Q-B3, QxQ; 5. PxQ, NxP; would cost White the exchange, and/or more pawns, so he wisely resigns before the debacle.

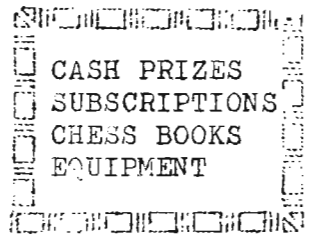
The second problem is an exercise in zugswang rather than in opposition. The idea is to lure Black onto his K3, so that in case of a pawn race White will queen with check. The position was by the famous Reti. Some of the solvers figured Black had to get to his QR1 after any exchange of passed pawns, but the Black K to QB1 is sufficient for a draw by forcing White to blockade his own RP.

Correct solutions were received from Oldham, Husby, Merk, Spencer, C. Dolph, and C. Ballantine, for #2.

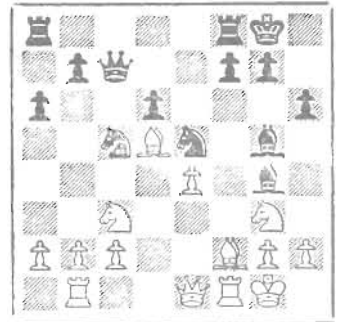
At the end of the first round Husby, Ballantine 8, and Oldham, Merk Spencer and Dolph each have 7 points.



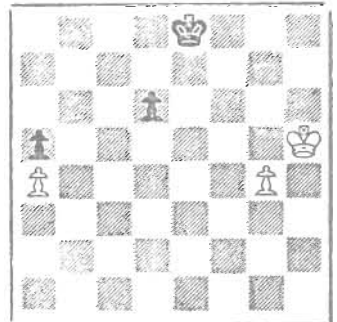
Black threatens mate in 1 but White wins. HOW?



LAST MONTH'S SOLUTIONS



1. ...N/B3-Q6;



1. K-N5 K-B2
 2. K-B6 K-K2
 3. K-N6 K-K3
 4. P-N5 wins
- (If 3...P-Q4; 4 K-B5)

CHESS WORLD

by Don Eilmes

RESHEVSKY-BRONSTEIN MATCH OFF

The match between Samuel Reshevsky and David Bronstein, which was to have begun in Moscow in December, has been canceled or postponed due to international complications. Cable reports from England also tell of the cancellation of the Annual Hastings Congress, or possibly only the premier event, in which foreign masters are invited to play.

HERMAN STEINER MEMORIAL TOURNAMENT

The Herman Steiner Chess Club of 108 N. Formosa Ave. announced the first annual Herman Steiner Memorial Tournament with events for all classes of players, which will get under way early in Jan.

The Masters section will be filled by invitation only from the strongest players in the city (Los Angeles) The entrance fee is \$10. The closing date for entries was Dec. 28 and the first round will start Jan. 6.

The Experts section will start Jan. 11 with entries closing Jan. 1. For Class A and B, entrance fee is \$5, and closing entry date Jan. 8. The first round Jan. 17. Entries and fee's are to be sent to George Goehler 1056 S. Ogden Drive, Los Angeles 19, Calif.

NOVEL INTERNATIONAL MATCH

The chess players in New York and London offices of the Guarantee Trust Co. are playing a cable match one move at a time. The previous match 7 years ago was won by London.

CALIFORNIA WOMEN'S CHAMPIONSHIP

Mrs. Sonia Graf Stevenson of Palm Springs, winning six games and drawing one with Mrs. Lona Grumetto of Los Angeles, finished with $6\frac{1}{2}-1\frac{1}{2}$ to take the title of California Women's Chess Champion.

WASHINGTON STALLS OPEN

This event played in Washington D.C. over Thanksgiving, was won by H. Berliner, local expert with 6-1. Next came A. W. Feuerstein, Bobby Fischer, W. Lombardy, and N. Rossolimo each with $5\frac{1}{2}-1\frac{1}{2}$. First prize was worth \$250 and those who tied for second, each received \$125.

DON'T FORGET THE PUGET SOUND OPEN-FEB. 22-23-24

BRITISH CHAMPION BARDEN, IN CHESS
 RATES THIS GAME BETWEEN CHAMPIONS
 RABAR-GLIGORIC, YUGOSLAVIA, 1955

TEST

COVER THE GAME SCORE.
 EXPOSE LINE BY LINE AS
 YOU SCORE YOUR POINTS.

KING'S INDIAN DEFENSE

OPENING MOVES: 1. P-Q4, N-KB3; 2 P-QB4, P-KN3; 3 N-QB3, B-N2; 4 P-K4, P-Q3; 5 B-K2
 O-O; 6 B-N5, P-B4; 7 P-Q5, P-K3; 8 N-B3, PxP; 9 BPxP, B-N5; GUESS WHITE'S NEXT----

10 N-Q2	3 POINTS	In K-Indian formations, Black combines --P-QB4 with the advance of Q side pawns, assisted by his KB on KN2. White tries to break through with P-KB4 and P-K5. White can restrain Black's Q side by posting his KN on QB4.
BxB		
11 QxB	1 POINT	NxB is mediocre.
QN-Q2		
12 O-O	2 POINTS	2 also for 12 P-B4. Nothing for N-N5 or N-B4.
R-K1		
13 P-B4	4 POINTS	Only 1 for N-B4, but 4 points for QR-K1.
P-QR3		
14 Q-B3	5 POINTS	White foresees that P-K5 will open the KB file, prepares a masked attack. 3 points for P-QR4 or 5 points for the transposition QR-K1.
Q-B2		
15 QR-K1	3 POINTS	2 for P-QR4. 4 for the more accurate N-B4.
P-B5		
16 K-R1	5 POINTS	A necessary preparatory move to avoid ...Q-N3ch.
QR-B1		
17 P-QR4	3 POINTS	He has to stop Black's Q side. Black should have played ...P-QN4 on his last move.
P-R3		
18 B-R4	1 POINT	
Q-N3		
19 BxN	7 POINTS	Now that Black has removed a guard from K5 the breakthru is possible. This exchange is preliminary.
NxB		
20 P-K5	1 POINT	
N-R2		
21 N/Q2-K4	6 POINTS	Other moves slow down the attack too much.
PxP		
22 P-Q6	4 POINTS	2 points for 22 PxP which is less clear than the text.
QR-Q1		
23 PxP	3 POINTS	Now stronger than on previous move. 3 for N-Q5.
R-KB1		
24 N-Q5	2 POINTS	
QxNP		
25 P-K6	7 POINTS	In search of a combination.
PxP		
26 N-K7ch	1 POINT	
K-R1		
27 NxPch	1 POINT	
K-N1		
28 NxR	1 POINT	
RxN		
29 Q-N4	3 POINTS	2 for Q-K5.
Q-K4		
30 P-Q7	4 POINTS	
R-Q1		
31 N-B5	7 POINTS	The N can't be captured because of 32 QxPch, etc.
Q-Q4		
32 NxKP	4 POINTS	
QxP		
33 R-Q1	5 POINTS	
Black resigns.		

68-83	MASTER
58-67	EXPERT
49-57	CLASS A
30-48	CLASS B
LESS	"Shall inherit the earth."

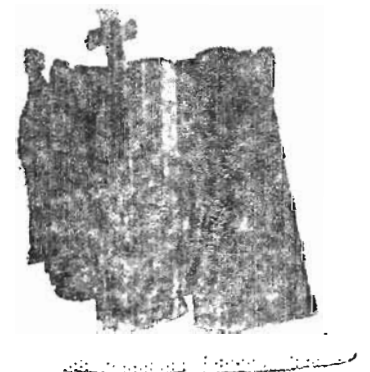
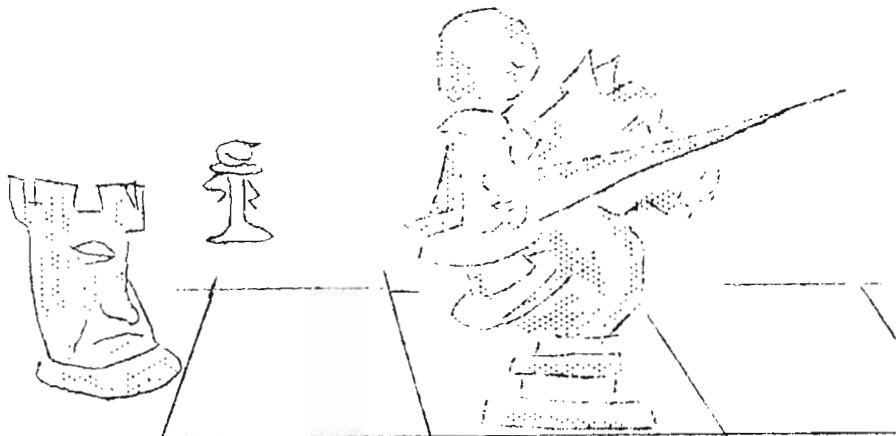
Add up your points and refer to the schedule above.

MORE INTRODUCTORY NOTES — NEXT MONTH



JACK NOURSE

Jack Nourse, Washington State's own Ambassador to the Chess Centers of the World, stayed longer than he had originally planned. He wrote: "I am still having a wonderful time in Spain. Living is cheap, and the country, its people and customs are infinitely interesting. I have entered the Palma (pop. 350,000) Chess Tournament. 18 entries. My score so far is 5-1. My game is still very rocky but so far have done alright. After all, I have to make a good impression for the glorious State of Washington. I was very sorry to see that Kitsap County could not swing a team this year. They have the players but distance is a bad factor. Best wishes, Jack Nourse."



"Sire, our spy reports that the opposing forces are mechanized!
They have TANKS in place of horses."

INTRODUCTORY NOTES

Meet four more players, chess fans. All four are Seattle Chess Club members. V. W. BEVER was chess club president many years ago. In 1953 he took over as the club secretary-treasurer when MR. CLARENCE BUSHNELL died. He now lives in Bellevue and is one of the leaders in chess affairs in that area. He played first board on the Queen Anne Chess Club team in the early days of the Puget Sound League. He has also played for the Seattle Chess Club team. He was long recognized as one of the northwest's leading players. Most of his chess today is postal, both WCF and national. He is a class A player in national and international postal chess. He is a long time member of the WCF. He is 76 years old but looks much younger.

FRANK FORRAY has been a Seattle Chess Club member for many years. He is very difficult to defeat as those who have played him will readily testify. He visits the club nearly every week day afternoon. He has been close to the top on the perpetual tournament board at the club for many years.

FRED STURGES plays afternoons at the club (mostly with Laizure) and keeps the club insured against the danger of fire. In 1939, his daughter was married to JIM HURT who was Washington State Champ at the time and compares about even with J. L. SHEETS in chess ability. At one time he played in an International Match and defeated a strong Canadian player without knowing the man was strong. It was a big thrill to know he had defeated such a strong player when he learned of it after he had won.

FRED RICE took over from Bever as club secretary in 1954. He served one year before being relieved by the writer. He learned the game only a few years ago and so probably loses more often than he wins. However, he seems to enjoy the games, win or lose, more than average.

SEATTLE CHESS CLUB In the Central YMCA, room 604 at 4th Ave. & Madison St. Open 7 days per week afternoons and evenings.

WEST SEATTLE CHESS CLUB Meets on the 2nd and 4th Friday evenings each month at the High Point Recreation Center in W. Seattle.

SPOKANE CHESS CLUB Meets Thursday evenings at the Desert Hotel.

TACOMA C.C. Fri. eve. at downtown library

YAKIMA C. C. Meets Mon. 7 p.m. YMCA.

TRI-CITY C.C. Meets Thurs. 7 p.m. at Richland Community Hall on Geo. Washington Way.

WALLA WALLA C.C. Fri. 7:30 p.m. YMCA

OLYMPIA C.C. Mon. 7:30 p.m. in Community Center.

BELLEVUE C.C. Contact Bever, Gib. 3636



Bever



Forray



Sturges



Rice

GAMES

by Wade

A few games from the State Closed are apropos at this time.

DAN WADE	VIC PUPOLS
1. P-Q4	N-KB3
2. P-KN3	P-KN3
3. B-N2	B-N2
4. P-K4	P-Q3
5. N-K2	O-O
6. O-O	QN-Q2
7. N-R3	P-K4
8. P-QB3	P-B3
9. N-B2	R-K1
10 PxP	PxP
11 B-K3	N-N5
12 Q-B1	NxB
13 QxN	Q-N3
14 QxQ	NxQ
15 QR-Q1	B-K3
16 P-N3	P-QR4
17 P-QB4	P-R5
18 N-B3	KR-Q1
19 RxRch.	RxR
20 R-Q1	RxRch.
21 NxR	N-Q2
22 N-B3	PxP
23 PxP	N-B4

White is in real trouble and walks a tight rope to escape defeat.

24 N-R1	B-R3
25 P-R4	----

White is practically without a move. If 25 K-B1? NxNP wins for Black.

25 ----	B-B8
---------	------

Possibly best was 25----K-B1 followed by K-K1 and K-Q1, etc. All White has is K-R2 followed by B-R3 giving up the Q-side to a possible onslaught by Black's K which might be good enough to win. Play it out and see for yourself!

26 N-Q1	P-QN4
27 P-QN4!	----

Watch Wade, the wiggler, wiggle out of this jam!

27 ----	N-Q6
28 PxP	PxP
29 B-B1	B-QB5
30 N-B2	B-Q7
31 N/1-K3	K-B1
32 NxB	PxN
33 N-R3	NxP
34 BxP	

Only a draw. Well how about it? Opposite colored bishops & pawns all on the K-side. No way to win.

"Hairbreadth Wade" shows in the following game how you can be nearly run off of the board and still gain a draw. Another from the State Tnt.

DON ELLIEMS	DAN WADE
1. P-QB4	P-K4
2. N-QB3	N-KB3
3. N-B3	P-Q3
4. P-Q4	PxP
5. NxP	B-K2
6. P-KN3	O-O
7. B-N2	QN-Q2
8. O-O	N-B4
9. P-K4	R-K1
10 R-K1	B-N5
11 P-B3	B-Q2
12 P-QN4	N-K3
13 P-B4	NxN
14 QxN	P-B4

Not good but Black has no good move.

15 Q-Q2	PxP
16 N-Q5	NxN
17 BPxN	B-KB3
18 B-N2	Q-N3ch.
19 K-R1	BxB
20 QxD	QR-E1
21 QR-N1	R-B5
22 P-K5	PxP
23 PxP	B-B4
24 QR-B1	R/1-QB1
25 RxR	RxR
26 Q-N3	R-B6
27 Q-R4	K-B1
28 R-KB1	P-N3
29 P-K6	----

Look the position over and ask, Did Black draw this?

29 ----	P-KR4
30 PxP	KxP
31 Q-Q7ch.	K-N1
32 Q-K8ch.	K-N2
33 Q-K7ch.	K-R3
34 Q-B8ch.	K-R2

If 34----K-N4?? 35 P-R4ch., K-N5; 36 RxB! wins. As White has perpetual check, the game is drawn.

There was a shortage of really good games in the State Closed. Some games that would have been worth the printing otherwise, were ruined by a bad blunder.

WASHINGTON STATE SPEED TOURNEY HELD AT 11 A. M. ON SUNDAY, JANUARY 20TH! DAN WADE, DEFENDING CHAMP, WILL BE THERE TO DEFEND HIS TITLE! (advertant.)

A big postal upset found F. M. Howard upsetting Bob Edberg. This game was finished shortly before Edberg went on to win the State title.

The picture below is from the Washington Wood pusher Tournament. Lt. Leininger on the left is playing Dennis Hamilton. Mrs. Edberg is in the background. Leininger won the tourney.

F. M. HOWARD

ROBERT EDBERG

- | | |
|---------------|---------|
| 1. P-Q4 | N-KB3 |
| 2. P-QB4 | P-KN3 |
| 3. N-QB3 | B-N2 |
| 4. P-K4 | P-Q3 |
| 5. N-B3 | O-O |
| 6. B-K2 | QN-Q2 |
| 7. O-O | P-B4 |
| 8. P-Q5 | N-N3 |
| 9. P-KR3 | P-K4 |
| 10 B-K3 | B-Q2 |
| 11 Q-Q2 | N-B1 |
| 12 B-R6 | N-K1 |
| 13 BxB | NxB |
| 14 N-R2 | P-B4 |
| 15 PxB | NxP |
| 16 B-Q3 | E/1-K2 |
| 17 N-K4 | B-K1 |
| 18 P-B4 | PxP |
| 19 QxP | P-QN4 |
| 20 P-QN3 | Q-N3 |
| 21 N-N4 | NxP! |
| 22 Q-N5 | N/Q4-K2 |
| 23 N/K4-B6ch. | K-R1 |
| 24 NxB | QRxN |
| 25 QR-K1 | P-Q4 |
| 26 N-K5 | R-Q1 |
| 27 R-Q1 | NPxP |
| 28 PxB | P-Q5 |
| 29 R-B3 | P-KR3 |
| 30 Q-Q2 | K-N2 |
| 31 R/1-KB1 | Q-Q3 |
| 32 N-N4 | P-KR4 |
| 33 N-R2 | N-K6 |
| 34 R/1-B2 | N/2-B4 |
| 35 N-B1 | Q-K4 |
| 36 Q-R5 | R-Q2 |
| 37 N-Q2 | R-KR1 |
| 38 N-K4 | R-QB1 |
| 39 Q-R6 | R/B1-B2 |
| 40 R-B4 | N-Q8 |
| 41 R/2-B3 | N-N7? |
| 42 RxN!! | FxR |
| 43 R-N3ch. | K-B1 |
| 44 Q-R6ch. | R-N2 |
| 45 Q-R8ch. | K-B2 |
| 46 N-Q6ch. | K-K3 |
| 47 BxPch.! | QxB |

If instead KxN; 48 Q-Q8ch., R/B2-Q2; 49 R-N6ch., RxR; 50 QxR Mate.
 48 NxQ R-R2
 49 Q-K8ch. K-B3
 50 Q-N6ch. Rcsigns.



Here is a game from the recent Alekino Memorial Tournament. A game to show even a Master can be beaten in just a few moves (by another Master)

UNKNOWN MASTER

SHYSLOV

- | | |
|-----------|---------|
| 1. P-Q4 | N-KB3 |
| 2. P-QB4 | P-K3 |
| 3. N-KB3 | P-QN3 |
| 4. P-KN3 | B-R3 |
| 5. P-N3 | P-Q4 |
| 6. B-KN2 | B-N5ch. |
| 7. KN-Q2 | P-B4 |
| 8. PxBP | KxBP |
| 9. B-N2 | O-O |
| 10 O-O | N-B3 |
| 11 N-QB3 | R-B1 |
| 12 PxB | PxP |
| 13 N-R4?? | N-Q5 |
| 14 N-QB3 | Q-K2 |
| 15 R-K1 | N-B7! |
| 16 R-KB1 | ---- |

If 16 QxN, BxPch.; 17 KxB (Black also has P-Q5 for later!) N-N5ch.; 18 K-B1 or N1 results in mate immediately. If 18 K-B3, Q-K6ch.; 19 KxN, R-B5ch.; 20 FxR, B-B1ch.; 21 K-R4 or R3, Q-R3 Mate.

- | | |
|-------------|-------|
| 16 ---- | NxR |
| 17 QxN | KR-Q1 |
| 18 B-B3 | B-R6 |
| 19 Rosigns. | |

BOLBY FISCHER is tackled by VICTORS PUPOLS, during the 1955 U. S. Junior Championship. Fischer is the present Junior Champion.

LATVIAN GAMBIT

R. Fischer

V. Pupols

1. P-K4	P-K4	23 BxN	PxB
2. N-KB3	P-KB4	24 QxP	P-B6ch
3. NxP	Q-B3	25 P-N3	B-KB4
4. P-Q4	P-Q3	26 Q-KR4	QR-K1
5. N-B4	PxP	27 QR-K1	B-K4
6. E-B3	Q-N3	28 Q-QN4	Q-R3
7. N-K3	N-KB3	29 P-R4	P-KN4
8. B-B4	P-B3	30 R-KR1	PxRP
9. P-Q5	B-K2	31 K-N1	P-R6
10 P-QR4	QN-Q2	32 PxP	PxP
11 P-R5	N-K4	33 Q-B5	Q-N2
12 B-K2	O-O	34 K-R2	Q-B3
13 O-O	B-Q2	35 QxRP	B-Q5
14 K-R1	K-R1	36 Q-QB7	BxKBP
15 N-B4	KN-N5	37 RxR	RxR
16 Q-K1	R-B2	38 R-KB1	B-Q5
17 P-R3	N-B3	39 RxP	BxN
18 NxN	PxN	40 PxP	R-K7ch
19 B-QB4	KR-B1	41 K-R1	B-K5
20 B-K3	N-R4	42 Q-B8ch	K-N2
21 K-R2	B-Q3	43 Q-N4ch	Q-N3
22 B-QN3	N-B5	44 Q-Q7ch	K-R3

White exceeded the time limit.

* * * * *

JUNIOR CHESS

CENTRALIA is off to a good start in the formation of a strong team if the players participating in the "Woodpushers'" are any indication of future strength. Their team will play a match with Tacoma this month or after the first of the year.

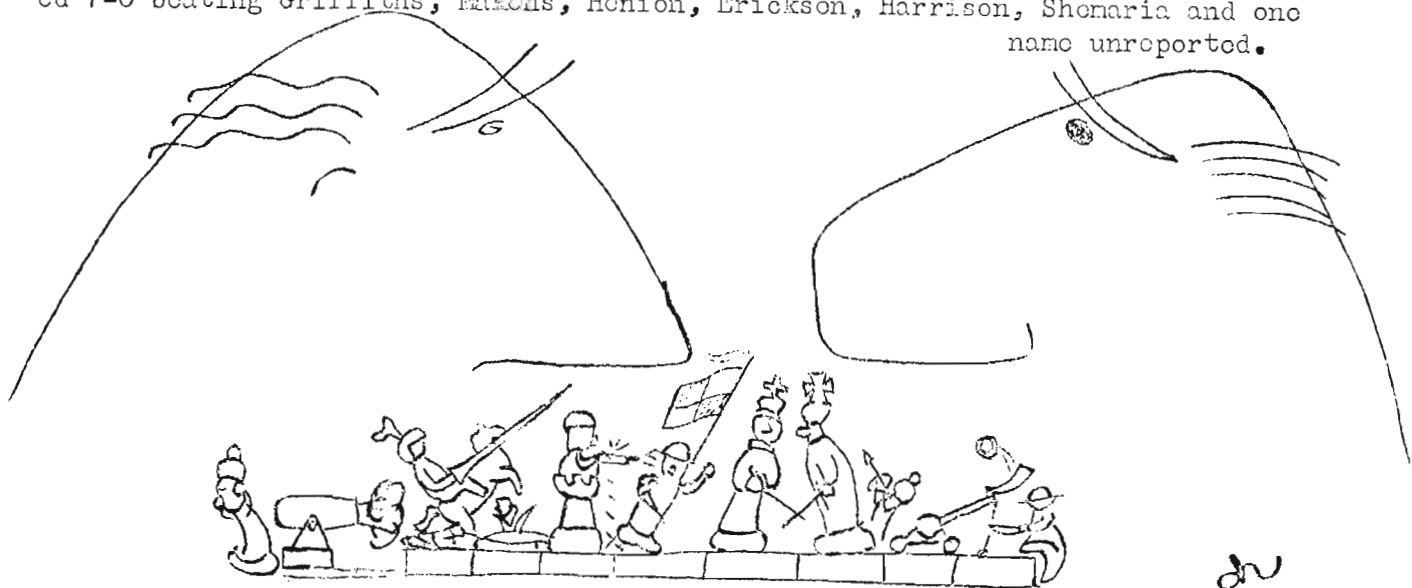
TACOMA, after its drubbing by Highline, (8-2), had been working hard all summer and has gone into high gear now that school is in session. Stress is being made on choice of the lower board players, as this is often where matches are won or lost.

HIGHLINE, after its lively career last year seems to have dropped from the picture. Any word to the contrary will be heartily received, however.

TEAM CAPTAINS interested in making arrangements for high school matches should contact Jim Hiltmore, 1015 W. Chestnut, Centralia; and Mr. R. B. Leach, 7032 East B Street, Tacoma.

CLUB NEWS

In a Santa Claus speed tourney at the Seattle Chess Club, CHARLES GRIFFITHS and JIM MCCORMICK tied for first place each with $14\frac{1}{2}-1\frac{1}{2}$. There was time for no playoff because they had to catch the last bus home. This was a 9 player double round-robin. Griffiths beat McCormick $1\frac{1}{2}-\frac{1}{2}$ but lost a game to DAVID ERICKSON. McCormick beat Erickson twice at the close of the tourney to catch up with Griffiths and share first spot. Other scores were - Erickson $12\frac{1}{2}$, Gell 8, Dr. Small $7\frac{1}{2}$, Gillette $6\frac{1}{2}$, Dr. Scoring $4\frac{1}{2}$, Mage 4, and Howard 0. A couple of days later McCormick scored $5\frac{1}{2}-\frac{1}{2}$ in a speed tourney beating out Griffiths, $3\frac{1}{2}-2\frac{1}{2}$, Wade 2-4 and Makens 1-5. In still another speed event, McCormick scored 7-0 beating Griffiths, Makens, Henion, Erickson, Harrison, Shenaria and one name unreported.



POSTAL CHESS

R.R. MERK 
 POSTAL CHESS EDITOR
 1026 E 71 SEATTLE 15

		POINTS				POINTS						
11/29	56A-2A	Mage	1	Dickson	0	54	56B6B	Notter	1	Jacobson	0	46
	56B-2A	Dickson	½	Sween	½	12	56B7A	Spatz	1	Notter	0	22
	56B-2B	Dickson	½	Sween	½	12	56B8A	Spatz	1	Miltmore	0	26
12/1	56A2A	Skarsten	1	Weaver	0	58	56B8B	Spatz	1	Miltmore	0	26
3	56A3A	Parsons	1	Cairncross	0	30	56B2B	Dickson	½	Parsons	½	10
4	56B4A	Haynes	1	Miltmore	0	32	56B8B	Hamilton	1	Miltmore	0	2
4	56B8B	Hamilton	1	Spatz	0	40	56A3B	Parsons	1	Cairncross		24
5	56B5B	Phillips	1	Gordon	0	36	56B1B	A. Edberg	1	Skoglund	0	34
10	56A7B	Bever	1	Baron	0	66	56B2B	Skarsten	1	Dickson	0	54
11	56A7A	Baron	½	Carter	½	30	56A3A	Bever	1	Howard	0	28
12	56B7A	Brookshire	1	Spatz	0	22	56A2B	Skarsten	1	Coubrough	0	66
12	56B6A	Notter	1	Jacobson	0	46						

	55A-7A	55A-7B	POINTS
Bever	x 0 ½ 1 1	x 1 1 ½ 1	6
Baron	1 x ½ ½ 1	0 x ½ 1 1	5½
Coubrough	½ ½ x 1 0	0 ½ x 1 1	4½
Carter	0 ½ 0 x 1	½ 0 0 x 1	3
Taro	0 0 1 0 x	0 0 0 0 x	1

Taro's low score was due to forfeit, when the pressure of his new job forced him to withdraw. Bever wins a 6-month extension to his membership as a prize.

Brookshire and Sween have been advanced to the "A" Division. Dick Parsons has joined the Air Force, and will be stationed in Texas. He will continue his games and is in contention for first place in the "A" Division. Let us have your new address, Dick, and best wishes for a successful career in the Air Force.

Mr. and Mrs. Robert Edberg, from Tieton, paid us a nice visit, while in Seattle with Bob's folks at Christmas.

In reporting the result of games finished, be sure to put the date of the result. Some recent cards received did not bear a date and post marks are not always legible. When this happens we use the date the card is received, which might be a disadvantage to players in figuring their ratings.

Ours is no bloody battle,
 With woe and horror fraught.
 Our joust is of a gentler kind,
 A measuring of mind with mind,
 A tournament of thought.

W.D. Nichols
 Fort Rock, Ore.

As the result of excellent promotional work by Don and Mary Eilmes, plus the usual steady efforts of Max Bader, and an assist by Charles Ballantine, we have fourteen (14) new members to add to the next addition of the Directory. We are growing in members every month. Keep the names of prospects coming.

New champions have taken over in both the "A" and "B" divisions. Bever jumped from 8th place to first, and Phillips, with a gain of 36 points is top man in his division after the graduation of Brookshire and Sween.

POSTAL CHESS RATINGS

"A" Division

Bever	1656
Baron	1630
Coubrough	1613
Kane	1610
Parsons	1607
Wace	1600
Weischer	1591
Skarsten	1582
Kaffenberger	1570
Brookshire	1509
Luters	1472
Dickson	1457
Edberg, R.	1436
Weaver	1432
Sween	1429
Knapp	1403
Woodward	1400
Carter	1383
Howard	1380
Cairncross	1307
Husby	1200

"B" Division

Phillips	1350
Van Natta	1340
Roberts	1330
Hamilton	1325
Laine	1274
Merk	1263
McDonald	1252
Edberg, A.Y.	1220
Spatz	1191
Tresidder	1185
Spencer	1185
Rogers	1178
Nichols	1149
Gordon	1142
Haynes	1142
Lyberger	1136
Raleigh	1134
Squire	1120
Youngman	1099
Lee	1088
Bell	1050
Gemar	1050
Mills	1050
Pifley	1050
Watson	1050
Benson	1030
Aldridge	1010
Skinner	996
Skoglund	986
Nelson	952
Notter	920
Waynor	906
Waldron	880
Miltmore	850
McBride	818
Adamson	781
Jacobson	710
Smith	633

POSTAL CHESS

POSTAL CHESS IS A GOOD WAY TO IMPROVE YOUR GAME. You can take enough time to thoroughly study each move. You can enter against any strength of competition and game results will soon give your rating its proper value.

AN ADVANTAGE OF PLAYING NORTHWEST PLAYERS is that the games proceed smoothly with overnight mail delivery. Ratings are adjusted and published each month.

EACH PLAYER IN A FIVE-MAN SECTION PLAYS TWO GAMES WITH EACH OF THE OTHERS.

THE ENTRY IS 50¢. A 6-MONTH SUBSCRIPTION EXTENSION IS THE PRIZE.

COMPLETE RULES ARE SENT.

SEND ENTRY TO POSTAL EDITOR

Return postage guaranteed
Form 3547 requested.

WASHINGTON CHESS LETTER
1026 E. 71st ST. SEATTLE, 15, WASH.

B. D. Strachan
5103 N.E. 15 Ave
Portland 11, Ore

cb/57

