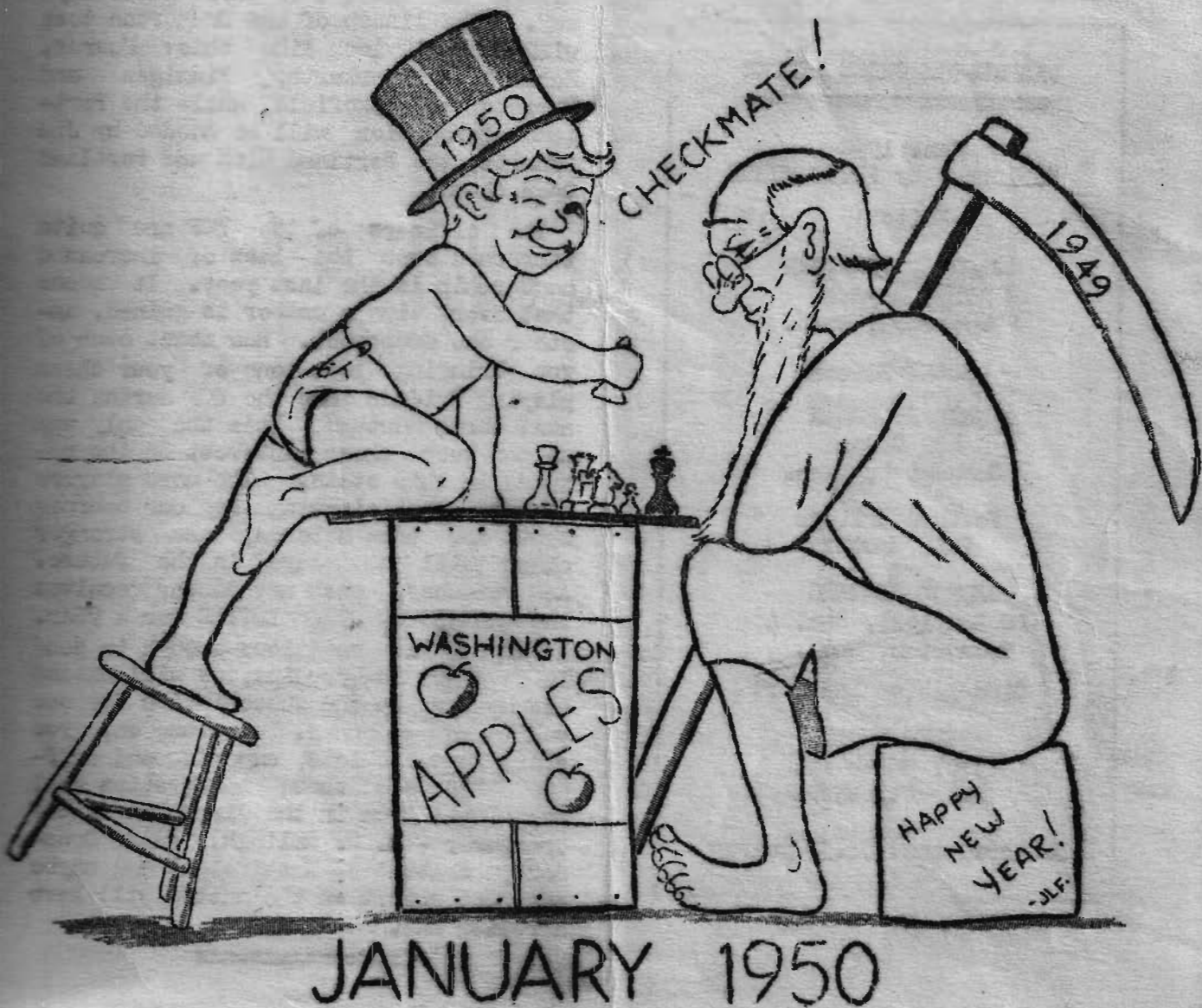


WASHINGTON CHESS LETTER



EDITORIAL

by Jack Finnigan

Well, the Puget Sound League season is heading into the home stretch and it looks like the Seattle Chess Club will take the honors this year after their recent victory over the up till now perennial champions from Tacoma. It seems very unlikely that the seasoned Seattle players will have trouble handling the college boys in their next two matches with Seattle U. and the U. of Washington teams, so we're crawling out on a limb and chalking this one up for Seattle. Don't let us down boys!

It's possible that the WASHINGTON CHESS LETTER will be having a special editor for the Games pages in the next issue. You all know him, and he's an excellent man for the job, but since his acceptance isn't official as yet, we can't divulge his name.

The radio match between Kitsap and Portland ought to be a very interesting event. We expect there might be a few "bugs" to iron out since it is the first match of this type tried by anyone participating in the match. Portland, of course, is the favorite because of the fine array of talent they have down there. But look for

Kitsap to win two or three games anyway. The lineup of the Bremerton team will probably look like this: Nourse, Rehberg, Lagerkurth, Finnigan and Christoy or Blakefield, while the Portland aggregation will be headed by Jim Schmitt, the Portland Club and Portland Open champ.

The officers of the WCF are quite concerned over the lack of increased membership in the last year. It seems that every time a member is gained, another one drops out. How about each of you bringing just one of your chess playing friends into the WCF during the next three months? It's the only way we can keep chess interest on the upgrade in this state. The more players we have participating in our tournaments and team matches, the stronger chess will be played in the future. And remember, each new member receives the WASHINGTON CHESS LETTER for a year. If anyone is ambitious enough to send in four new memberships, we will extend his membership and subscription for one year, as a bonus. So come on, you chess fans, addicts, experts and duffers let's see those memberships roll in, (roll them in the direction of WCF Treasurer - W. H. Ralieg, 4318 Densmore, Seattle 3, Washington) and maybe our next report on the matter will have a rosier hue.

WASHINGTON CHESS LETTER

Jan. 1950

Published by PETER HUSBY

Editor:

JACK L. FINNIGAN
2497 Snyder
Bremerton, Wash.

Postal Editor:

NEIL F. POWER
429 Cedar
Snohomish, Wash.

Feature Writers
This Month:

GEORGE REHBERG
PO Box 1623, Sta. A
Bremerton, Wash.

Circulation Manager:

PETER HUSBY
3707 Smith St.
Everett, Wash.

Subscription: \$1.50 yearly

.....
PUGET SOUND CHESS LEAGUE NEWS

STANDINGS

	Won	Lost	Tied	P.F.	P.A.
Seattle	5	0	0	33 ⁴	15 ⁴
Tacoma	3	1	0	26	14
Olympia	3	1	1	29	21
Kitsap	3	2	1	33	27
YMCA	2	2	2	26	34
U. of W. ...	2	3	0	24	26
Seattle U. .	1	3	0	13 ¹ / ₂	24 ¹ / ₂
Everett	0	3	0	11 ¹ / ₂	18 ¹ / ₂
Bellingham .	0	4	0	9	27

**TACOMA CHESS CLUB FINALLY TOPPLED--
 SEATTLE WINS 5¹/₂-4¹/₂**

The "Notre Dame" of the Puget Sound Chess League has finally tasted defeat after three years of dishing it out!

The honor of handing Tacoma its first shellacking since the PSCL was organized went to the Seattle Chess Club.

However, the match was a close one and was decided on the 3rd and 4th boards, Muller and Lindstrom coming thru with double wins. Results:

SEATTLE (5 ¹ / ₂)	TACOMA (4 ¹ / ₂)
Patterson 1, Holmes 1	
Neale 1/2, Crain 1 1/2	
Muller 2, Hewitt 0	
Lindstrom 2, Collins 0	
Bickford 0, Coubrough 2	

KITSAP DOWNS SEATTLE UNIVERSITY

Winning the decision on four out of five boards, Kitsap took the toll of Seattle University 7¹/₂ to 2¹/₂ Sunday, January 8th.

T. Patrick Corbett kept it from being a complete walkaway by winning both his games from Charley Magerkurth on board three. George Christey narrowly missed defeat when his opponent, Miss Fenton, overlooked a Knight fork on his Queen and King. The score:

KITSAP (7 ¹ / ₂)	SEATTLE UNIV. (2 ¹ / ₂)
Rehberg 1 1/2, Bussey 1/2	
Nourse 2, Vellias 0	
Magerkurth 0, Corbett 2	
Finnigan 2, McGough 0	
Christey 2, Miss Fenton .. 0	

YMCA TOPS EVERETT, 7 TO 3

The YMCA Chess Club traveled to Everett Sunday, Jan. 8th and came home with a 7-3 decision over the Everett team.

As in the Tacoma-Seattle match, this was also decided by the bottom boards with the "Y" winning the six bottom board games.

Game results:

YMCA (7)	EVERETT (3)
Joachim	1, Power
Hebert	0, Taro
Amidon	2, Husby
Allen	2, McCarthy
Warner	2, Tweeddale

OLYMPIA WINS OVER U. OF WASHINGTON

The Olympia Chess Club, led by State Champion Robert Stork, had some trouble before finally vanquishing a stubborn University of Washington team. The individual game results have not yet been reported.

LEADING PLAYERS

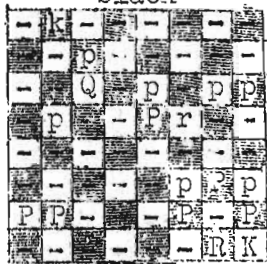
Glenn Muller	Seattle	6 - 0
Ed Lindstrom	Seattle	7 ¹ / ₂ - 1 ¹ / ₂
Caryl Crain	Tacoma	6 ¹ / ₂ - 1 ¹ / ₂
Leslie Coubrough .	Tacoma	6 ¹ / ₂ - 1 ¹ / ₂
Larry Taro	Everett	5 - 1
Vernon Holmes	Tacoma	5 - 1
Jack Finnigan	Kitsap	7 ¹ / ₂ - 3 ¹ / ₂
Bob Neale	Seattle	6 ¹ / ₂ - 3 ¹ / ₂
Joe Cerretelli ...	Olympia	6 - 2
Bob Stork	Olympia	5 ¹ / ₂ - 2 ¹ / ₂
A. Murray	Olympia	5 ¹ / ₂ - 2 ¹ / ₂
George Rehberg ...	Kitsap	7 - 5
Pat Corbett	Seattle U. ..	5 - 3
Dick Allen	YMCA	5 - 3
Gerald Schain	U. of W.	5 - 3
G.S.G.Patterson ..	Seattle	4 - 2
Warner	YMCA	4 - 2
Jim Amidon	YMCA	5 ¹ / ₂ - 4 ¹ / ₂
Father Bussey	Seattle U. ..	4 ¹ / ₂ - 3 ¹ / ₂
Sprague	Bellingham ..	4 - 3
Blatt	U. of W.	3 ¹ / ₂ - 2 ¹ / ₂
Dimoff	U. of W.	3 ¹ / ₂ - 2 ¹ / ₂

(Plus scores, over six games)

KIBITZERS KORNER:

"Ye editor", WCL:

I have twice played over the game Stork-Bollman (page 7, Dec. WCL) and I still can't see any-



WHITE

(Position after 35 Q-B6). ---Charles Dallantine

You didn't go wrong Charles, yup, they both missed it and so did "ye ed".

Dear Jack:

In the Stork-Bollman game in the Dec. issue, how come the annotators missed the mate in 2 (and a Q sacrifice to boot!!) on Black's 35th? It was like something out of the past -- in the State tourney in '36 or '37 I had almost that identical mate against Bourne Smith---

Cordially,
L.A. Walker

Dear Sir:

In the game Bob Stork vs Dean Bollman published in the December issue, both players and the publishers missed a simple looking mate for Black. No doubt many readers saw this Queen sacrifice which was peculiarly missed by all concerned. Yours truly,

Dean H. Bollman

I guess the faces of all concerned are peculiarly red. -- Ed.

Dear Jack:

.....I firmly believe that we should take steps to see that tournament rules are definitely and finally decided upon before any clock is started in any future tournament.

Your friend,
Bob Stork.

REHBERG SAYS:

I think that one reason for the popularity of Chess in Utopia (Russia that is) is the long winters -- you know, nothing to do so they break out the board and men. That obviously can't be the only reason but it certainly has some bearing on it.

We are fond of saying that there is no element of luck in Chess. But how many games have you lost, gentle reader, due to an unfortunate move?

I am developing the suspicious habit of demanding to see the color of the pawn I didn't choose at the start of a game. This since an unprincipled opponent recently held out two concealed black pawns for my 'choice'. A scurvy trick!

In a recent game I was being mauled and chased all over the board (that is my side of the board) following an unsound sacrifice of a very noble Bishop. But at last I saw the winning defensive play four moves hence.

My superior, arrogant and somewhat loquacious opponent continued his triumphant way through my beleaguered squares and men, little suspecting the rude shock awaiting him. My Queen was lying in ambush behind a pawn on her original square.

At last he blundered like an Okapi into the pit and I quickly made the move that would bust him wide open. "Queen takes Knight, check", I said, with a triple attack, mind you (quadruple, if you count pawns) on a Rook, Knight, the lowly Pawn, and his haughty but ill-concealed King. And I wasn't sorry for him for, after all, anybody knows enough to protect his own King, or at least he should.

My opponent started, screamed aloud, and then guffawed loudly.

At first I thought he had, at long last, gone off his "rocker" but then--- I saw the horrid truth! I had mistaken my King for my Queen!!

I resigned, mustering what dignity I had left, and stalked home to bed where I am going now.

The championship deciding game --- White blunders on his 32nd move and Black answers correctly and wins the game and first place.

GIUOCO PIANO

L. Allyn	Bob Stork
White	Black
1 P-K4	P-K4
2 N-KB3	N-QB3
3 B-B4	B-B4
4 P-B3	N-B3
5 P-Q4	PxP
6 PxP	B-N5ch
7 N-B3	NxP
8 Q-B2?	BdNch
9 PxB	P-Q4
10 B-Q3	Q-K2
11 O-O	O-O
12 R-K	P-B4
13 N-Q2	Q-B3
14 NxN	BPxN

If 14 P-B3, NxQP! White cannot play 15 QBPxN because of the threat of a smothered mate: 15.....QxPch; 16 K-R, N-B7ch; 17 K-N N-R6dblch; 18 K-R, Q-N8ch; 19 RxQ, N-B7 mate.

15 B-B	B-B4
16 B-B4	B-N3
17 B-N3	N-K2
18 B-K5	Q-B2
19 Q-N2	N-B3
20 B-N3	P-QN3
21 Q-N5?	N-R4
22 R-K3	QR-B
23 Q-N2	K-R
24 P-B3	KR-K
25 B-R6	N-B5
26 BxN	PxB
27 PxP	BxP
28 R(1)-K	B-Q6
29 B-K5	R-B
30 R-B3	Q-Q4
31 RxR	RxR
32 BxBP?	Q-B2

White resigns.

RETI OPENING

Jack Finnigan	Bob Stork
White	Black
1 N-KB3	P-Q4

GAMES

2 P-QB4	PxP
3 P-K3	B-N5
4 BxP	P-K3
5 Q-R4ch	P-B3
6 B-K2	BdN
7 BxB	N-B3
8 O-O	B-K2
9 N-B3	O-O
10 P-Q4	QN-Q2
11 Q-B2	R-B
12 N-K4	NxN
13 BxN	N-B3
14 B-B3	P-QN3
15 R-Q	Q-B2
16 P-QN3	P-QB4
17 PxP	BxP
18 B-N2	Q-K2
19 QR-QB	P-K4
20 Q-K2?

Missing the winning continuation: 20 P-QN4 wins at least the Bishop, for if: 20.....BxP; 21 QxR, RxQ; 22 RdxRch, N-K; 23 B-B6 wins back the Queen with a Rook ahead for White.

20	P-QR4
21 P-KN3	P-R3
22 R-B2	Q-K3
23 R(1)-B	P-K5
24 BxN??

The fatal blunder.

24	KPxB
----------	------

and Black wins.

SICILIAN DEFENCE

F. Hebert V. Holmes
White Black
An interesting struggle in which White sacrifices a Bishop to open a mating attack; Black must return the Bishop to escape mate. Later White sacrifices a Knight to win a Rook and the game.

1 P-K4	P-QB4
2 N-KB3	N-KB3
3 N-QB3	N-QB3
4 P-Q4	PxP

5 NxP	P-Q3
6 B-QN5	B-Q2
7 B-N5	P-K3
8 O-O	B-K2
9 R-K	O-O
10 NxN	PxN
11 B-Q3	R-QN
12 R-K3	RxP

As later proven this Pawn grabbing was bad for Black

13 P-K5	PxP
14 BxN	BxB
15 BxPch!	KxB
16 Q-R5ch	K-N
17 R-R3	B-R5
18 RxB	P-KB4
19 R-Q	Q-K
20 Q-R7ch	K-B2
21 Q-R5ch	K-B3
22 Q-B3	K-K2
23 N-Q5ch!!	KPxN
24 Q-R3ch	K-K3
25 QxR	Q-K2
26 R-R3	B-B
27 P-KB4	K-B3
28 R-K	Q-B4ch
29 K-R	R-K
30 RxP	RxR
31 QxRch	K-B2
32 R-N3	P-N3
33 R-R3	Resigns

TWO KNIGHT'S DEFENCE

R. Vellias	Dr. Shephard
White	Black
1 P-K4	P-K4
2 N-KB3	N-QB3
3 B-B4	N-B3
4 O-O	P-Q4
5 PxP	NxP
6 P-Q4	PxP
7 NxP	N(3)-K2
8 B-KN5	Q-Q3
9 R-K	B-K3
10 B-N5ch	P-B3
11 B-QB4	P-KR3
12 B-R4	O-O-O
13 B-KN3	Q-B4
14 NxB	PxN
15 Q-K2	P-QN4
16 QxPch	K-N2
17 B-N3	N-N5
18 N-Q2?	PxN
19 QR-Q	RxR

(continued on next page).

Vellias-Shephard continued

20 RxR N(2)-Q4
 21 Q-Q7ch K-R3
 22 Q-B8ch K-N3
 23 P-QB3 N-R3
 24 P-QR4 P-N4
 25 Q-Q8ch

White here announced mate in three but missed the correct mating combination 25 P-R5ch, KxP; 26 R-Rch, K-N3; 27 QxN mate.

25 N(4)-B2
 26 BxNch Nc3
 27 P-R5ch K-N2
 28 P-R6ch NcP
 29 R-Q7ch N-B2
 30 QxNch K-R3
 31 Q-N7ch K-R4
 32 Q-N8 K-R3
 33 Q-B8ch K-R4
 34 Q-Q6ch K-R3
 35 Q-B8ch K-R4
 36 Q-N8 K-R3
 37 Q-B8ch K-R4
 38 R-Q P-N5
 39 R-Rch Resigns

Mate next move.

Technically, Black could have claimed a draw by repetition of moves after White's 37th. It was the third time the pieces had been in the same position.

=====

The shortest game of the tournament:

SICILIAN DEFENCE

Glenn Muller	Don Sciter
White	Black
1 P-K4	P-QB4
2 P-KB4	N-KB3
3 N-QB3	P-K3
4 N-B3	P-Q4
5 B-N5ch	il-B3
6 P-K5	il-Q2
7 O-O	P-QR3
8 B-K2	B-K2
9 P-Q4	PcP
10 NcP	hd!
11 QxN	B-B4
12 Resigns.	

White overlooks a Queen pin. =====

TWO KNIGHT'S DEFENCE

Vernon Holmes	Bob Neale
White	Black
1 P-K4	P-K4
2 N-KB3	N-QB3
3 B-B4	N-KB3
4 P-Q4	NcKP
5 PxP	Q-K2
6 Q-Q5	P-B4
7 O-O	N-N5
8 Q-Q	P-QN3
9 N-QB3	B-N2
10 NcN	PxN
11 N-N5	Q-B4
12 Q-R5ch!	P-N3
13 B-B7ch	K-Q1
14 BcP	K-B
15 NcKP	BcN
16 BcB	N-B3
17 B-K3	Q-K2
18 P-KB4	B-N2
19 Q-N4	K-N2
20 P-QN4	QcNP?
21 BcNch	PcB
22 QcB	QR-KN
23 Q-Q7	Q-K5
24 Q-Q2	R-N5
25 R-B2	R(1)-KN
26 R-QN?	P-KR4
27 R-N4?	Q-B4
28 Q-Q3	Q-K3
29 Q-B4?	Q-Q2
30 Q-KB	R-R5
31 R-Q4	Q-R6
32 R-B3?	QxRPch
33 K-B2	R(5)-N5
34 K-K2	RcPch
35 R-B2	Q-R6
36 RcR	RcRch
37 B-B2	Q-N5ch
38 K-K3	R-R7?
39 R-Q3	R-R6ch
40 K-K4	Q-N3ch
41 K-Q4	R-R7
42 K-B3	Q-K5
43 B-N3	P-QR4
44 P-QR3	R-R8
45 Q-B3	QcQ
46 RcQ	P-R5
47 B-B2	P-R6
48 B-N3
P-K6! forces	the win im-
mediately.	
49 P-KN8	
49 B-R2	R-QR8
50 K-N2	R-K8

51 RcxP	K-B
52 R-R7	P-B4
53 P-B5	R-B8
54 R-B7	P-N4
55 P-K6	P-N5
56 RcxPch	K-Q
57 RcxP	PcPch
58 KcxP	R-B7
59 B-N3?	R-B6ch
60 K-R4	RcB
61 P-B6	Resigns

=====

TWO KNIGHT'S DEFENCE

Bob Stork	Don Allyn
White	Black
1 P-K4	P-K4
2 N-KB3	N-QB3
3 B-B4	N-B3
4 N-N5	P-Q4
5 PcxP	NcP
6 P-Q4	PcxP
7 Q-B3	Q-K2ch
8 K-Q	P-KR4
9 QcxPch?

9 QcN wins a clear piece.

9 QcQ	
10 NcQ	KcN
11 BcNch	B-K3
12 BcBch	KxB
13 R-Kch	K-Q2
14 N-Q2	R-Q
15 N-B3	K-B
16 B-N5	B-N5
17 R-K4	QR-K
18 RcxRch	RcR
19 P-QR3	B-R4?

The Bishop goes into voluntary exile.

20 P-QN4	B-N3
21 K-Q2	P-Q6
Too wild!	N-K4 seems to
be better.	
22 PcxP	BcP
23 R-QB	N-Q5
24 NcN	BcN
25 R-B4	B-N3
26 P-QR4	B-N8
27 B-B4	R-K2
28 P-KR4	P-QR3
29 P-R5	P-B3
30 P-N3	B-R2
31 P-Q4	B-N
32 BcB	KcB

(continued on next page)

Stork-Don Allyn continued.

33 R-B5 R-Q2
34 K-Q3 R-Q4?

This loses; P-KN3 should have kept the draw.

35 K-K4! Resigns
Black cannot save his King-side Pawns.

=====

Seattle City League game:

QUEEN'S GAMBIT DECLINED

Clyde Schmoeyer J.L. Sheets

White Black:

1 P-Q4	P-Q4
2 P-QB4	P-QB3
3 P-K3	N-B3
4 N-KB	P-K3
5 N-B3	QN-Q2
6 PXP	KPxP
7 B-Q3	B-Q3
8 Q-B2	O-O
9 N-K2	R-K
10 N-N3	N-B
11 B-Q2	Q-B2
12 N-B5	BxN
13 BxB	N-K5
14 B-B3	Q-K2
15 O-O	Q-B3
16 BxN	RxB
17 N-Q2	R-R5
18 P-B4	R-K
19 N-B3	R-R4
20 QR-K	Q-Q
21 Q-B2	P-KB4
22 N-K5	N-Q2
23 Q-B3	N-B3
24 R-B	R-R3
25 P-KR3	N-K5
26 B-K	Q-N3
27 P-QN3

Better was P-QN4, for if:
27.....BxP; 28 R-QN, P-R4;
29 P-R3.

27	P-N5
28 R-QB2	ExB
29 RxB	Q-N5
30 N-Q3	Q-R4
31 Q-Q	R(3)-K3
32 Q-QB	R-N3
33 N-B2	N-N6
34 N-R	N-R4
35 R(1)-K2

K-B2 was needed here.

35	R(3)-K3
36 K-B2	Q-Q
37 P-N3	R-N3
38 R-K	R(1)-K3
39 R-N	R-K5
40 Q-Q	R-R3
41 Q-B3	N-B3
42 K-B	Q-K
43 R-K2	R-K2
44 P-KN4?

A miscalculation. To preserve drawing chances it was necessary to play N-B2.

44	PxP
45 PXP	N-K5
46 N-B2	N-B6
47 P-N5	NxR
48 PxR	NxR
49 KxN	RxP
50 Q-N4	Q-N3
51 K-B	QxQ
52 NxQ	R-B6ch

(The games' first check).

53 K-N2	RxP
54 K-N3	RxP

White resigns.

=====

POSTAL GAME

F. Blakefield E. Tweeddale

White Black

1 P-K4	N-KB3
2 N-QB3	P-Q4
3 P-K5	N(3)-Q2
4 NxP	NxP
5 N-K3	P-QB4
6 P-KB4	N(4)-B3
7 B-B4	P-K3
8 N-B3	B-Q3
9 N-N5	Q-K2
10 Q-N4	P-KR4
11 Q-R4	N-Q5
12 O-O	P-N4
13 B-Q3	B-N2
14 P-B4	P-N5
15 P-QN3	N-Q2
16 B-N2	Q-B3
17 QR-N	P-KN3
18 Q-B2	B-B2
19 B-R	O-O
20 QR-K	Q-N2
21 B-K4	BxB
22 Nx3	P-B4
23 N-N5	QR-K
24 N-B3	BxP

25 NxN	PxN
26 QxB	P-K4
27 Q-B3	PxN
28 RxP	R-B2
29 Q-Q5	K-R2
30 P-Q4	R(2)-K2
31 PXP	Q-R3
32 R(1)-K	P-B5
33 R-K2	N-B
34 B-N2	N-K3
35 Q-N5	R-Q
36 QxP	Q-N4
37 Q-B3?

37 B-B might have saved White a lot of trouble.

37	N-Q5
38 R-K4	P-B6
39 P-N3	Q-B4
40 RxN	P-B7ch
41 K-N2	RxR
42 R-KB	R-Q6
43 Q-B	Q-B6ch
44 K-R3	R-K6
45 Q-Q2	R-K5
46 Q-N5	R-KB2
47 P-K6	Q-K7

White resigns.

=====



GIUOCO'S
PIANO

KEN MULFORD WINS U.W. CHESS CROWN

Winner in the Univ. of Washington fall quarter chess tourney was Ken Mulford, with Jerry Schain finishing a close second.

Gerald Pitzer won first place in the Class B tourney.

=====

OLAF ULVESTAD PLANS EXTENSIVE TOUR

Washington's chess master, Olaf Ulvestad, is starting on a simultaneous exhibition tour this month that will take him from the Pacific Coast to the Atlantic. His general itinerary is as follows:

- Jan. 16-22 -- San Francisco Bay Area
- Jan. 26-Feb. 10 -- Illinois, Michigan and Ohio.
- Feb. 12-22 -- New York State.

Recently Olaf gave an exhibition at the Hollywood Chess Group. He won 12 and lost 3 (to H. Gordon, I. Revise and A. Weiss).

=====

SEATTLE CITY LEAGUE NEWS

The next meeting of the City League is scheduled for Friday, January 13th, 8 PM at the Assembly Hotel, 9th and Madison.

New entries in the league are Duwamish Chess Club and the Postal Clarks, Local 28. The Boeing Chess Club is expected to join soon.

Results of the latest rounds:

- Seattle 10, Elks 0 (forfeit)
- YMCA $5\frac{1}{2}$, Seattle University $4\frac{1}{2}$
- U. of Washington 7, Madrona 3
- Postal Clarks $5\frac{1}{2}$, Duwamish $4\frac{1}{2}$

Standings

	<u>Won</u>	<u>Lost</u>
West Seattle	2	0
Postal Clarks	1	0
U. of Washington ..	$2\frac{1}{2}$	$\frac{1}{2}$
Seattle Univ.	2	$1\frac{1}{2}$
Seattle C. C.	$1\frac{1}{2}$	$1\frac{1}{2}$
Ladies Team	1	1
YMCA	1	2
Elks Club	1	2
Duwamish	0	1
Madrona	0	3

=====

PUGET SOUND LEAGUE NEWS

Charles Joachim, league tournament director announces that dates for Bellingham's remaining matches have been set. The schedule is as follows:

- Jan. 22, 10:30AM: Bellingham vs. Univ. of Washington at Everett; 2:30 PM: Bellingham vs. Everett at Everett.
- Feb. 26, 10:30AM: Bellingham vs. Tacoma at Tacoma; 2:30 PM: Bellingham vs. Olympia at Tacoma.

The next round of the regular schedule will see the following matches: January 29th - Everett at Tacoma (may meet in Seattle if mutually agreed); Kitsap at Olympia; U. of W. at YMCA; Seattle Univ. at Seattle Chess Club.

=====

REHBERG-NOURSE STILL TIED UP IN KITSAP TITLE MATCH

George Rehberg and Jack Nourse, who finished the Kitsap County Championship in a first place tie, are still all knotted up in their playoff match.

The score is now 3-3 so the winner of the next game will be the "champ".

=====

SEATTLE CLUB CHAMPIONSHIP TO BEGIN NEXT SUNDAY

Glenn Muller, Seattle C. C. Tournament Director, announces that the 1950 Club Championship will get underway on January 22nd. Theodor Davidsen is the present club champ. The tourney will be a round robin affair.

=====

BREMERTON - PORTLAND TO STAGE RADIO CHESS MATCH

Sunday, January 22, will see the Portland Chess Club and the Kitsap County Chess Club competing in what is believed to be the first radio chess match ever held in this area.

Kitsap's transmitter will be set up at the Bremerton YMCA. Those interested in viewing the unique contest can come on down Sunday afternoon.

=====

WASHINGTON CHESS FEDERATION MEETING
HELD DECEMBER 11th

A meeting of four WCF officers was held Sunday, Dec. 11th. The officers present were Jack Nourse (President), Dick Allen (Vice President), Jack Finnigan (Secretary), and W. H. Ralieggh (Treasurer).

Federation officers agreed that a membership drive be instigated and that a list of WCF members and WCL subscribers be published in the near future.

The meeting agreed that at least half of the entry fees in future State Championships and Puget Sound Open Tournaments will be used for prizes or prize money for 1st and 2nd places.

It was also recommended by the Board of Directors that an extra round be included in Swiss tournaments run by the WCF in order to determine 2nd place and break ties.

The treasurer, W. H. Ralieggh, reports that a few of the teams have yet to remit their league entry fees for the 1949-1950 season. The fee is \$5.00. Also, the club membership in the WCF is \$5.00.

=====

MACHINISTS VIE FOR SHOP CHESS TITLE

Fifteen chess players are engaged in a hotly contested tournament for the Machine Shop Chess Championship at the Bremerton Navy Yard. A summary of the standings as of Jan 11th follows:

	Won	Lost	Drawn
Jack Nourse	3	0	0
Jack Finnigan ...	12	1	2
Roger Velas	3	1	0
Dwight Bacon	8	3	1
Dave Miner	9	4	0
George Christoy..	9	7	1
U. S. Armstrong..	6	5	0
Carl Henkle	2	2	0
Edmison	3	7	0
Geo. Brockerman..	3	8	0
George Langdon ..	1	7	0
C. Hafford	2	7	0
Bertholf	0	2	0
Chas. Morrissey..	0	2	0
James Galbraith..	0	4	0

=====

WHAT HAPPENED IN 1949:

January:

J. A. Naas wins 3rd annual NW Washington tournament with a 5-0 score.

February:

Neil Power and Larry Taro finish in first place tie in Everett Club tournament.

March:

T. Davidsen wins Seattle Club Championship.

Glenn Muller cops State Speed Chess crown.

April:

Arthur Dake racks up perfect score in Pacific NW Masters-Experts Tournament in Tacoma.

May:

Tacoma wins league team tournament.

Jim Amidon wins Puget Sound Open.

June:

Gerald Schain is U. W. chess champ.

July:

Washington defeats British Columbia and gains possession of Peace Arch trophy.

Jim Schmitt and Alex Suchobeck tie in Portland Open. Schmitt wins the Portland Club Championship.

September:

Antone Walloch takes over Seattle City Championship.

October:

League play begins for '49-'50 season.

December:

Bob Stork wins State Championship over 20 entrants.

=====

TACOMA CHESS CLUB ELECTS OFFICERS

Election of officers for 1950 was held by the members of the Tacoma Chess Club January 6th. Those voted into office:

President - Vernon Holmes
Secretary - Leslie Coubrough
Treasurer - R. Avann
Tournament Director - R. Collins
Asst. Tour. Dir. - L. Dambacker
Publicity - Caryl Crain

=====