

WASHINGTON OPEN OCT. 20-21-SPOKANE

Chess players wishing to play in a big tournament and have a good time will not wish to miss the 1957 WASHINGTON STATE OPEN TOURNAMENT. This time the event will be held in Spokane at the Desert Hotel, site of the annual Inland Empire Open tournaments.

The dates to remember are Saturday and Sunday, October 20th and 21st. Registration will begin at 8:30 Saturday morning. It is hoped to get play started by 9.

Play will be at the rate of 40 moves in two hours with unfinished games to be completed on the player's own time.

Three games will be played Saturday and three more on Sunday by each player. The Harkness system of pairings will be used. The tourney will be USCF rated.

First prize will be at least \$25 and probably more. There will be prizes in cash for several of the top finishers and even some cash prizes for the top players in the second half of the standings. Entry fee will be \$3.

A banquet will be held Saturday night for all contestants and their wives or friends. The Spokane club will furnish light refreshments during play.

Tournament director will be Robert Edberg. Edberg is going to appoint players from different towns in the state to a committee which will aid him in handling the tournament. All pairings will be supervised and verified by this committee.

Qualifiers for the Washington Closed will be listed in order of finish and then alternates will be named in order. In case any of the qualifiers cannot be in the Closed, their places will be taken by the alternates.

Everything possible is going to be done to make this the best and smoothest tournament ever held in the state. It is hoped there will be a huge turnout for this big event from chess enthusiasts of Washington and neighboring Idaho, Montana, B. C. and Oregon chess players.

Last year, after a successful tournament, Vellias, Warner, Edberg and McCormick placed high enough in the Open to qualify for the Closed. Seeded men were then State Champion Bills, and Masters Zengalis and Ulvestad. Zengalis was unable to compete and McCormick had to miss the event too and was replaced by Pupols.

Olaf Ulvestad barely beat off the challenge of Edberg and Pupols to win the 1956 State Championship. Vellias, the 1956 Washington Open Champion, finished last in the Closed.

The Washington State Chess Champion, besides winning the cash first prize, gets custody for one year of the beautiful trophy emblematic of the state's highest chess title. This trophy was donated to the WCF by Robert Edberg for the 1st time last year. The first player to win this trophy three times gets permanent possession.

D. W.

BISHOP CAPTURES STATE 'OPEN'

CORNELIUS, EDBERG, & PUPOLS NEXT HIGH AT SPOKANE

By Dr. Griffith Parker and Dan Wade

"Genial GEORGE BISHOP finally came into his own at Spokane when he won the 1957 Washington Open with a 5-1 score. His was a popular victory as everyone likes George and he has been knocking at the gates of a title for a long time.

Tied with GORDON CORNELIUS, VIKTORS PUPOLS, ROBERT EDBERG and BELDON PEARSON at the end of five rounds with a 4-1 score, Bishop faced Pearson in the final round and scored a quick sacrificial mate. Meanwhile, Edberg played Pupols to a draw and Cornelius drew his game with TOM MAKINS.

GEORGE BISHOP has made his home in many places in his sixty-plus years. He has made Seattle his home during the past few years. He has spent this time gradually getting rid of his chess "rustiness" caused by a long layoff from the game. In the early 1930's George was quite active in Washington, D. C. tournament activities. Among other successes, he likes to recall his win over the U. S. Open Champion SAM FACTOR in a radio match game. We hope to give you it in our next issue. Since living in Seattle, George has helped right along with a lot of ideas and work with our Washington Chess Letter, even taking a whirl at being editor of the magazine.

BISHOP won four and drew two games in winning the Washington Open. Draws were with CORNELIUS (his best played game) and PUPOLS. George felt he had Pupols beaten but let that slippery fellow escape. George came close to a licking only once in his six games. DON EILMES nearly upset the champ's apple cart while playing some of the best chess he has played in his short career.

GORDON CORNELIUS of Spokane, who is the Spokane and Eastern Washington title holder, placed second on Median Points with ROBERT EDBERG of Tieton, current Seafair Open and Montana State champion third and VIKTORS PUPOLS presently Inland Empire Open and Seattle (Open and Closed) City champ fourth. All three of the runner-ups finished undefeated with three wins and three draws to score $4\frac{1}{2}$ - $1\frac{1}{2}$.

BELDON PEARSON of Dayton, Washington deserves special mention. This was his first tournament and he played good chess throughout. If he has a chance to compete in future events, he will be heard from in no uncertain terms.

A total of twenty-four players competed and represented three different states. Besides the Washington players, JOHN BARTO of Great Falls, Montana and HORTON THOMPSON of Kendrick, Idaho put in appearances.

Profiting by his experiences in tournaments in several states, but especially in the Nevada tournament, ROBERT EDBERG did a wonderful job of directing. Pairings were made by the Harkness System in the first round and by scores after that based on the ratings which were adjusted after each playing session.

Prizes in the second half of the standings went to LEMUEL BALL and RALPH RICE of Spokane. Both are newcomers to tournament chess. Junior prize money was split between MARY (Mrs. Don) EILMES of Seattle and JOHN HARTMAN of Spokane. Mary was the only entrant on the distaff side and held her entry in abeyance to fill in if there were an uneven number of entries.

The usual banquet Saturday night saw eighteen at the tables. Speeches

were dispensed with and everybody filled in the time with the ever present banter and chess talk.

The top four players automatically qualified for the Washington Closed Tournament. The following 4-2 scoring players were named as alternates in their order of finish: BELDON PEARSON of Dayton, TOM MAKINS of Seattle, ROBERT HIGGINSON of Spokane and DONALD DANIELS of Spokane. In case any of the qualifiers cannot play in the Closed, alternates are invited in the order listed.

While the tournament was fair-sized, and thanks to the entries from the Westside, of good strength, it was a disappointment to the host Spokane Club. The local group invited the tournament to Spokane with the idea and purpose of giving the players in the eastern part of the State a chance to play in their own State championship by holding it east of the mountains. It was expected that the other chess groups east of the mountains outside of Spokane would welcome the opportunity to compete if the tourney was held in Spokane. Only 3, instead of an estimated 15, entered the tourney from eastern towns outside the City of Spokane. They were PEARSON of Dayton, EDBERG of Tieton and the Reverend ALFRED CARTER of Ritzville. A good reason for this possibly is the starting time early Saturday morning instead of noon. Many Spokane players did not compete because they work on Saturday morning and distances are so great in the eastern part of the State between towns that the early start meant many players would have to leave their homes Friday night in order to play Saturday morning.

It was not obvious to the observer that the calibre of play was any better under the 40 moves in two hours rule than under the total $2\frac{1}{2}$ hour time limit in the last Inland Empire Open event. The latter makes for a much snappier event and makes it possible to start at noon on Saturday and finish early Sunday. The final tabulations were completed at 11 o'clock Sunday night in this affair.

SNAPSHOTS OF THE TOURNEY

The newly decorated Nile Room at the Desert Hotel made a wonderful site for play. Thanks go to the hotel for its excellent cooperation in service as well as room rental.

Edberg taking charge of everything. He introduced new and original pairing cards with "everything" on them.

Bill Bailey (Rear Admiral U. S. N. Ret.) playing in his first tournament and forgetting to stop his clock when Pupols was in time pressure. He says he had a lot of fun. He is from Rhode Island and only temporarily in Spokane.

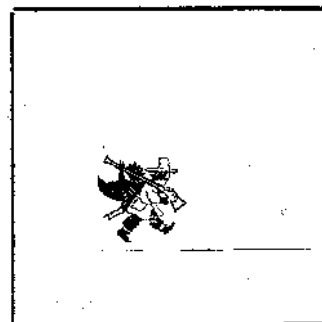
Ralph Rice borrowing no-doze tabs on Sunday after playing all day Saturday and working all that night.

George Bishop, when asked to what he credited his success to, answered, "No doze tabs!"

Mary Eilmos getting a thrill over her last round win from Parker. (She threatened to never speak to me again if I beat her so I had to let her win, besides that she outplayed me.)

Parker blaming his weak showing in the last I.E.O. on his duties as director but now admitting he is playing punk chess.

Mrs. Lyberger, her grand daughter and Mrs. Parker lending beauty to the banquet dinner as well as charm.



In spite of a disappointing $2\frac{1}{2}$ - $3\frac{1}{2}$ score, there was never a gripe or complaint from Dick Parsons. Others could well profit by emulating his behavior. He is a real sportsman and competitor. Dick was the Lyberger's guest for weekend. He and Al became acquainted through Washington postal chess.

Don Eilmos was overly gentlemanly in allowing one of his opponents to take back an illegal knight move and make a move with another piece. This just isn't done in tournament chess.

Edberg and Pupols playing "horsey" in their last game. Queens and bishops were off the board, the rooks were on the back rank and the four knights pranced back and forth getting nowhere.

Very much like the last I. E. O. when he offered a draw to Pupols in the 6th and final round, Cornelius offered a draw to Makins in the last round even with a pawn advantage. He felt he couldn't hold it.

Daniels happy with a 4-2 finish after a bad start. He lost his first round game to Kiperts when he gleefully grabbed a pawn with a rook only to lose it to a bishop sleeping in an unnoticed corner!

Pearson drives to Walla Walla to play with that club on Friday nights. When Dr. Baumwoll couldn't go to Spokane for the team match, Beldon was placed on board one and lost two tough games to Cornelius. In fact, he had a win in their second game but missed it.

Don Eilmos remarking before his game with Higginson, "I wonder if his jinx over me is going to still hold." It did.

Kittredge and Thompson played for 116 moves before Kittredge was finally mated. The game was adjourned twice. Horton Thompson, in his seventies, is now a fixture at Spokane tourneys. He has played in all three Inland Empire Opens, and now the Washington Open. He raises prize gladiola bulbs as a hobby. He can not beat the hot-shots but does well against the others.

Three chess sets were left behind in the playing room. Dr. Parker has them and is waiting for the owners to claim them. SUMMARY ON PAGE 16.

SPOKANE	$5\frac{1}{2}$	WALLA WALLA	$4\frac{1}{2}$
Gordon Cornelius	2	Beldon Pearson	0
Robert Kittredge	0	Ken Hartwig	2
Ray Kromer	1	Ray Kronquist	1
Dr. G. H. Parker	1	Ed Nightengale	1
Don Daniels	$1\frac{1}{2}$	Byron Bayley	$\frac{1}{2}$

CHARLES HEWITT WINS TACOMA SPEED TOURNAMENT

Charles Hewitt won a 6 player rapid transit tourney held Friday, Sept. 28th. Mrs. Whitis was the only participant attending because of a tourney notice in the Tacoma News Tribune.

C. HEWITT	X	1	$\frac{1}{2}$	1	1	1	$4\frac{1}{2}$	$-\frac{1}{2}$
V. HOLMES	0	X	1	1	1	1	4	-1
D. HAMILTON	$\frac{1}{2}$	0	X	1	1	1	$3\frac{1}{2}$	$-1\frac{1}{2}$
R. LOUGHEED	0	0	0	X	1	1	2	-3
MRS. WHITIS	0	0	0	0	X	1	1	-4
G. WOLOVER	0	0	0	0	0	X	0	-5

In first games, Cornelius, Kromer and Dr. Parker won and Daniels drew to put Spokane ahead $3\frac{1}{2}$ - $1\frac{1}{2}$. Walla Walla won three of the second five games with Hartwig, Kronquist and Nightengale scoring points in the rally. However, Cornelius won his second & Daniels picked up a win to keep Spokane on top by one point $5\frac{1}{2}$ to $4\frac{1}{2}$. Ken Hartwig was the star for the losers with two wins while Cornelius was the chief reason for Spokane's victory with his two wins. Pearson played on first board for Walla Walla in place of Dr. Baumwoll who was unable to travel up to Spokane for the match.

The Editor invites all of our chess friends from Tacoma and Spokane and all other localities to be the guests of the Seattle Chess Club at the annual WASHINGTON WOODPUSHERS

1957 WASHINGTON STATE OPEN
Spokane, October 20-21, 1956

RANK	CONTESTANTS	HOME	-1-	-2-	-3-	-4-	-5-	-6-	W	L	D	SCORE	Med.*
1.	BISHOP, George	Sea.	W-13	W-9	W-22	D-2	D-4	W-5	4-0-2	5-1		14.5	
2.	CORNELIUS, Gordon	Spo.	W-19	W-17	W-5	D-1	D-3	D-6	3-0-3	4-1-1	$\frac{1}{2}$	14.5	
3.	EDBERG, Robert	Tie.	D-16	W-13	W-15	W-6	D-2	D-4	3-0-3	4-1-1	$\frac{1}{2}$	14.0*	
4.	PUPOLS, Viktors	Tac.	W-11	W-24	D-6	W-17	D-1	D-3	3-0-3	4-1-1	$\frac{1}{2}$	14.0*	
5.	PEARSON, Beldon	Day.	W-12	W-10	L-2	W-16	W-8	L-1	4-2-0	4-2		15.0	
6.	MAKINS, Tom	Sea.	W-18	W-16	D-4	L-3	W-15	D-2	3-1-2	4-2		14.5	
7.	HIGGINSON, Bob	Spo.	L-15	W-11	W-9	L-8	W-18	W-12	4-2-0	4-2		11.5	
8.	DANIELS, Don	Spo.	L-17	W-18	W-14	W-7	L-5	W-15	4-2-0	4-2		11.0	
9.	EILMES, Don	Sea.	W-14	L-1	L-7	W-11	W-17	D-10	3-2-1	3-2-1	$\frac{1}{2}$	12.5	
10.	KITTREDGE, Bob	Spo.	W-23	L-5	L-12	W-22	W-20	D-9	3-2-1	3-2-1	$\frac{1}{2}$	10.0	
11.	BAILEY, L. W.	Spo.	L-4	L-7	W-21	L-9	W-24	W-17	3-3-0	3-3		12.5*	
12.	THOMPSON, Horton	Ken.	L-5	W-21	W-10	L-15	W-13	L-7	3-3-0	3-3		12.5*	
13.	BALL, Lemuel	L.L.	L-1	L-3	W-19	W-23	L-12	W-20	3-3-0	3-3		11.0	
14.	RICE, Ralph	Spo.	L-9	W-23	L-8	L-20	W-19	W-16	3-3-0	3-3		10.0	
15.	BARTO, John	G.F.	W-7	D-22	L-3	W-12	L-6	L-8	2-3-1	2-3-1	$\frac{1}{2}$	15.0	
16.	PARSONS, Dick	Gen.	D-3	L-6	W-24	L-5	W-22	L-14	2-3-1	2-3-1	$\frac{1}{2}$	13.5	
17.	KIPERTS, Arvids	Spo.	W-8	L-2	W-20	L-4	L-9	L-11	2-4-0	2-4		14.5	
18.	CONWAY, Mike	Spo.	L-6	L-8	W-23	W-24	L-7	L-19	2-4-0	2-4		12.5	
19.	HARTMAN, John	Spo.	L-2	L-20	L-13	W-21	L-14	W-18	2-4-0	2-4		9.0	
20.	MORGAN, Bob	Spo.	L-22	W-19	L-17	W-14	L-10	L-13	2-4-0	2-4		8.5*	
21.	EILMES, Mary	Sea.	L-24	L-12	L-11	L-19	W-23	W-22	2-4-0	2-4		8.5*	
22.	PARKER, Dr. G.H.	Spo.	W-20	D-15	L-1	L-10	L-16	L-21	1-4-1	1-4-1	$\frac{1}{2}$	11.0	
23.	ALBERTS, Dave	Spo.	L-10	L-14	L-18	L-13	L-21	W-24	1-5-0	1-5		10.0	
24.	CARTER, Rev. A.	Rit.	W-21	L-4	L-16	L-18	L-11	L-23	1-5-0	1-5		9.0	

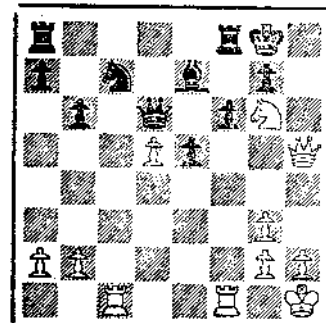
All forfeited games, won or lost, are underlined. There are no unbreakable ties. Edberg-Pupols remained tied under the Solkoff 21 to 21 but under S-B. Edberg came out ahead 15 to 14.25. With the Solkoff, Bailey edged Thompson 19 to 18.5. & Bob Morgan had 13.5 Solkoff points to Mary Eilme's 12.

Sea. - Seattle Ken. - Kendrick, Idaho Spo. - Spokane L.L. - Liberty Lake, Wash.
 Tac. - Tacoma G.F. - Great Falls, Mont. Tie. - Tieton Gen. - Centralia
 Day. - Dayton Rit. - Ritzville

The Financial Report

\$67.50 in Entry fees.
 \$36.00 in Banquet fees.
 \$103.50 Total Receipts.

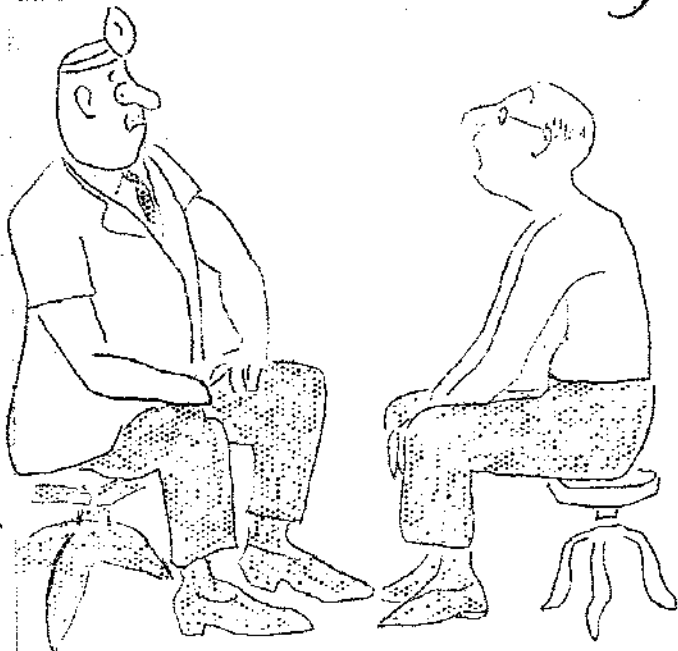
\$103.50 Receipts
 \$103.03 Disbursements
 \$.47 Confiscated by Tournament Director for wear and tear incurred!!!



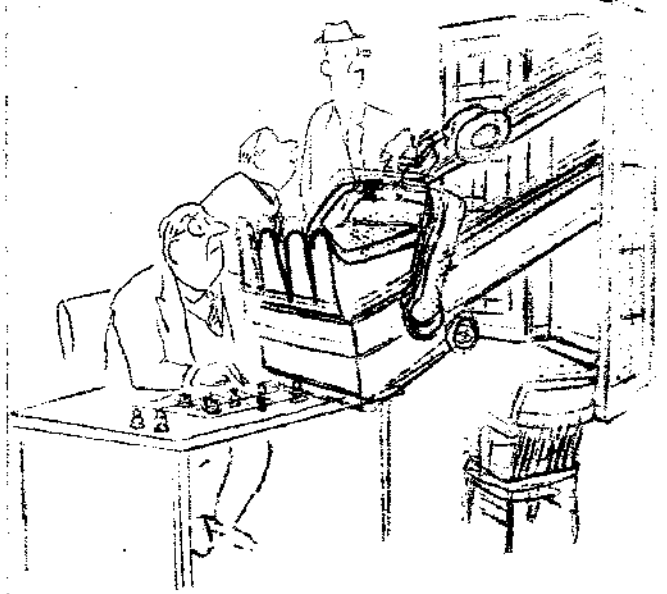
WHITE TO PLAY
 Reshevsky v. Grigorieff, 1954

The first four finalists have officially and definitely qualified for the State Closed Tournament. Next highest ranking players will fill any vacancies. (EDBERG)

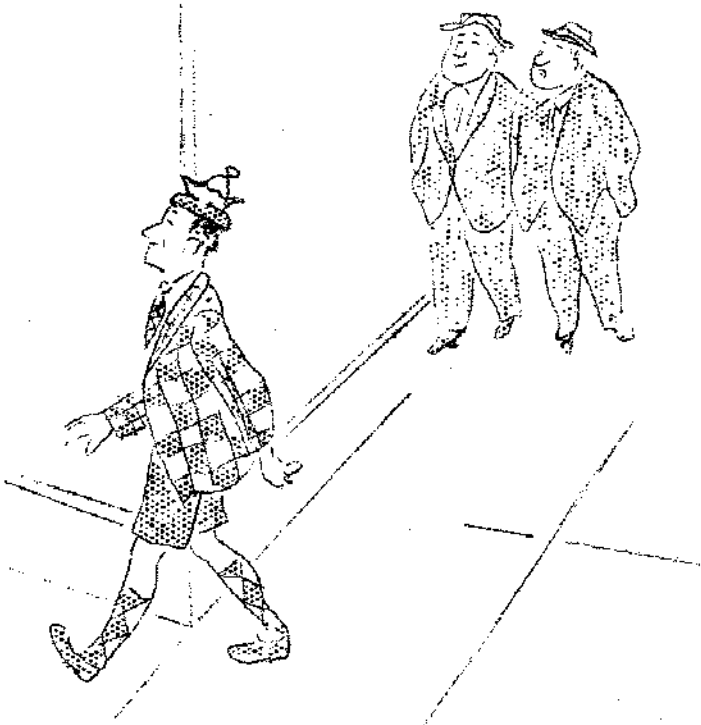
in a lighter vein



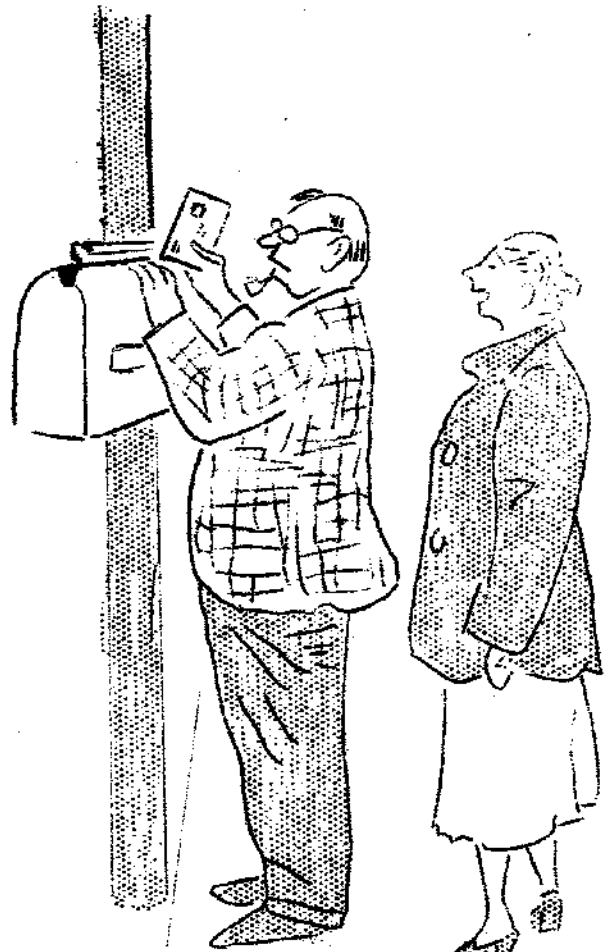
"Doc, I'm getting so weak I can't push a pawn two squares in one move. What kind of an opening is 1. P-K3?"



"That shovel operator is pretty good. He's a pawn ahead already."



"Wouldn't you say that Filbert is carrying his interest in chess a little too far?"



"You've been standing there with that chess move for a half-hour. Let loose. Live dangerously!"